

# **BACKGROUND INFORMATION DOCUMENT (BID)**

**ENVIRONMENTAL AND SOCIAL IMPACT ASSESSMENT (ESIA) FOR  
THE PROPOSED EXPLORATION ACTIVITIES OF BASE AND RARE  
METALS, INDUSTRIAL MINERALS, NUCLEAR FUEL MINERALS AND  
PRECIOUS METALS ON EXCLUSIVE PROSPECTING LICENSE (EPL)  
9689, LOCATED EAST OF NOORDOEWER, //KHARAS REGION**

**Environmental Consultant:**

Excel Dynamic Solutions (Pty) Ltd

**Proponent:**

Intercontinental Mining (Pty) Ltd

**January 2025**

## 1 INTRODUCTION

Excel Dynamic Solutions (Pty) Ltd (the Consultant) has been appointed by Intercontinental Mining (Pty) Ltd (the Proponent) to act on their behalf in obtaining an Environmental Clearance Certificate (ECC) for the proposed mineral exploration activities on Exclusive Prospecting License (EPL) 9689. The target commodities for the proposed exploration activities are Base & Rare Metals, Industrial Minerals, Nuclear Fuel Minerals and Precious Metals. The 28460.4482 ha EPL is located approximately 24 km east of Noordoewer, in the //Kharas Region, as depicted in **Figure 1**. The proposed site is accessible via gravel access roads into the farms, which connect to the B1 road from Keetmanshoop. The EPL lies over Farm Kromrivier No. 359, Farm Sperlingsfontein No. 478, Farm Tsams No. 360, Farm Devillierspunt No. 353 and Farm Witputs No. 258 as depicted in **Figure 2**.

Exploration and all mining-related activities are among the listed activities that may not be undertaken without an ECC under the Environmental Management Act (EMA) (2007) and its 2012 Environmental Impact Assessment (EIA) Regulations. The relevant listed activities as per EIA regulations are:

- *3.1 The construction of facilities for any process or activities which requires a license, right of other forms of authorization, and the renewal of a license, right or other forms of authorization, in terms of the Minerals (Prospecting and Mining Act, 1992).*
- *3.2 other forms of mining or extraction of any natural resources whether regulated by law or not.*
- *3.3 Resource extraction, manipulation, conservation, and related activities.*

The Proponent is, therefore, required to obtain an ECC for the approval of the EPL before the commencement of works on the EPL. To fulfill the legal requirements, the Proponent has appointed Excel Dynamic Solutions (Pty) Ltd (Consultant), to conduct the required Environmental and Social Impact Assessment (ESIA) process and submit the ECC application to the Department of Environmental Affairs and Forestry (DEAF) at the Ministry of Environment, Forestry & Tourism (MEFT).

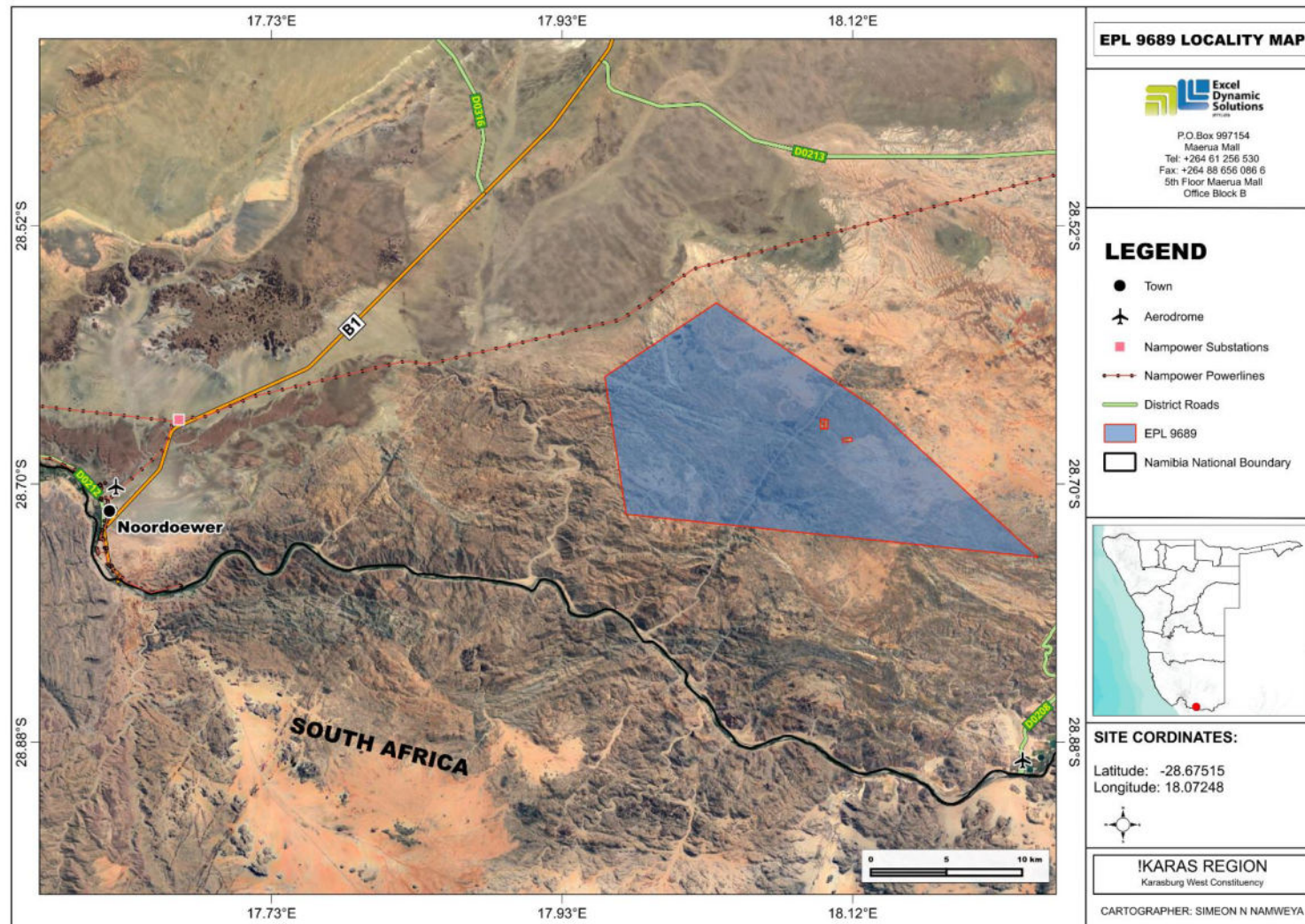


Figure 1: Locality Map - EPL 9689



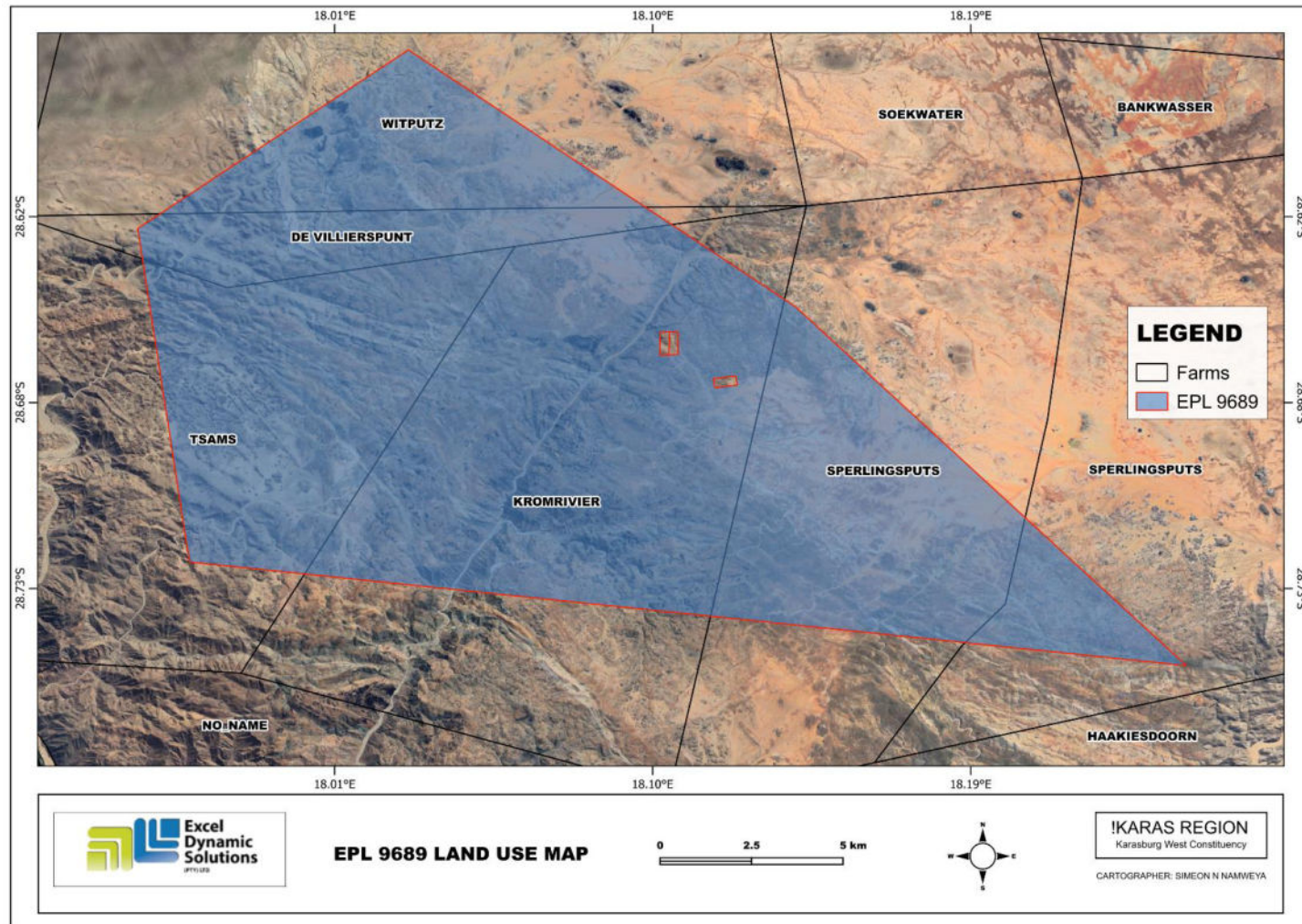


Figure 2: Land Use Map for EPL 9689

## **2 PURPOSE OF THIS DOCUMENT**

This is a non-technical document of the Environmental and Social Impact Assessment (ESIA), which serves the purpose of informing Interested and Affected Parties (I&APs) / stakeholders of the following:

- Project location;
- Proposed activities of the project;
- Environmental and Social Impact Assessment (ESIA) process to be followed;
- How I&APs and/or stakeholders can be involved.

All I&APs and/or stakeholders are hereby encouraged to submit their comments/inputs/concerns on the proposed project activities, which can contribute significantly to the Environmental and Social Impact Assessment Report (ESIAR) and Environmental Management Plan (EMP). The ESIAR and EMP will be submitted to the Ministry of Environment, Forestry and Tourism (MEFT) and Ministry of Mines and Energy (MME) for decision-making. However, the planned exploration activities will only commence once the Proponent has been issued with an ECC and obtained all required permits.

## **3 PROJECT DESCRIPTION**

The proposed activities entail prospecting and detailed exploration activities to delineate the mineral deposits. This is to determine whether the deposit for the target commodities is economically feasible (to advance to the resources development and mining phase).

Prospecting and exploration of minerals are the first components of any potential mining project. This is done to acquire the necessary data required for further decision-making and investment options.

Exploration activities are anticipated to last for about three years or sometimes longer (depending on the various factors such as turnaround between exploration data analysis and availability of funds between project phases, etc.).

### 3.1 Project Plan and Activities

The proposed exploration activities methods are divided into two (2) categories:

- Phase 1: Non-invasive techniques e.g., mapping/geochemical and radiometric surveys.
- Phase 2: Invasive techniques (detailed exploration) e.g., soil sampling, trenching and drilling.

Once the target areas have been selected and verified under the prospecting phase, detailed exploration works will follow.

### 3.2 Human Resources, Services and Infrastructure

The exploration activities will require the following services and infrastructure to progress smoothly:

**Human Resources and Accommodation:** It is anticipated that approximately 5 - 10 people, including skilled and unskilled employees, will be employed during the exploration phase and will be accommodated in tented camps on site.

**Water Supply:** Approximately 2500 litres of water will be required for the exploration activities per month. If required or deemed necessary, or the Proponent finds good groundwater during the exploration activity, the borehole may be used as a water source, with the permission of the land owner, and appropriate abstraction permit obtained from the competent authority.

**Fuel Supply for Machinery and Equipment:** Diesel will be used to power the machinery, equipment and generator when required.

**Accessibility and Transport:** The proposed project site is accessible via gravel access roads into the farms, connecting to the B1 road from Keetmanshoop. Should additional access roads be required for the project, there might be created.

**Sewage:** A mobile ablution facility will be provided on-site and wastewater will be removed and transported to the nearest approved disposal facility.

**Solid Waste:** Sufficient jackal-proof waste bins will be provided across the exploration site and they will be emptied and disposed of at the nearest approved waste facility.

**Hazardous Waste:** Hazardous waste such as fuel/oils will be appropriately stored in a standardized bunded container for disposal at an approved facility.

**Health and Safety:** Adequate and appropriate Personal Protective Equipment (PPE) will be provided to the project personnel, and at least one first aid kit.

**Accidental Fire Outbreaks:** Firefighting equipment, including extinguishers, will be readily available in vehicles as well as at the appropriate sites.

**Equipment, Material, Machinery and Vehicles:** At least one 4x4 vehicle will be required, a drilling supporting truck, excavator/front-end loader, a dozer, air compressor, drilling fluids stored in manufacturers approved containers, and a generator for power supply, among other equipment, will be required for the proposed project.

## 4 ENVIRONMENTAL ASSESSMENT

This ESIA applied for this project takes into account the provisions of the Environmental Management Act, 2007 (Act No. 7 of 2007), and the EIA Regulations, 2012. The overall objective of the ESIA is to identify potential negative impacts associated with the proposed project that shall be assessed and provide potential effective mitigation measures for implementation.

The main objectives of this ESIA are, but are not limited to:

- Identification of potential impacts associated with the proposed project.
- Consultation with the I&APs and relevant authorities and provide them with an opportunity to participate throughout the ESA process.
- Assess the significance of issues and concerns raised.
- Compile the ESIAR addressing all potential identified issues and impacts.
- Draft an EMP that includes impact management and mitigation measures.

### 4.1 Pre-Identified Potential Impacts

The following potential socio-economic and environment impacts are anticipated during exploration activities:

**Positive impact:**

- Social-economic development through employment creation and skills transfer
- Investment opportunities/infrastructure-related development benefits
- Increase in local, regional and national economic development
- Improved support for local businesses through the procurement of locally available goods and services

**Negative impacts:**

- Disturbance of existing commercial grazing areas
- Physical land/soil disturbance and prone to erosion
- Impact on fauna and flora (habitat disturbance and poaching)
- Water resources (over-abstraction of water) and soil pollution
- Air quality issue owing to dust generation
- Occupational and community health and safety risks/hazards
- Vehicular traffic safety and services infrastructure (local roads)
- Vibrations and noise associated with drilling activities
- Environmental pollution from poor waste management
- Archaeological or cultural heritage impact
- Potential social nuisance and land use conflicts

Other potential impacts may be identified as the ESIA process progresses. All impacts and public concerns/comments will be incorporated and addressed in the ESR and EMP.

**4.2 Public Consultation Process**

Public participation is an important part of the ESIA process, which ensures that sufficient information is gathered from and/or shared transparently with all I&APs and stakeholders, including the findings of the reports, during the specified comment periods.

I&APs are hereby invited to comment on environmental, social, and economic issues relating to the proposed project.

To comment or receive further information on the proposed project, please register with Excel Dynamic Solutions (Pty) Ltd as an I&AP at the address below.

**Contact:** Ms Alina Endjala

**Tel:** +264 (0) 61 259 530

**Email:** [public@edsnamibia.com](mailto:public@edsnamibia.com)