



TEL.: (+264-61) 257411 ♦ FAX.: (+264) 88626368
CELL.: (+264-81) 1220082
PO BOX 11073 ♦ WINDHOEK ♦ NAMIBIA
E-MAIL: gpt@thenamib.com

To: **Chief Regional Officer**
P/Bag 2184
Keetmanshoop
Namibia

30 April 2026

Re: **Environmental Management Plan for the existing operations of Noordoewer Guesthouse in Noordoewer, //Kharas Region Namibia**

Dear Sir/Madam

Geo Pollution Technologies (Pty) Ltd was appointed by Noordoewer Guesthouse to compile an environmental management plan (EMP) for their guesthouse operations in Noordoewer //Kharas Region (see location map on page 2). The EMP will be submitted to the Environmental Commissioner, Ministry of Environment, Forestry and Tourism, in support of an ECC.

Project: Environmental Management Plan for the existing operations of Noordoewer Guesthouse in Noordoewer, //Kharas Region Namibia

Proponent: Noordoewer Guesthouse

Environmental Assessment Practitioner: Geo Pollution Technologies (Pty) Ltd

The guesthouse has 14 rooms, with a total occupancy of 32, and operates on a bed and breakfast principle. Infrastructure and amenities include a reception area, inside dining area, outside dining area and bar, swimming pool, and braai areas. Food is prepared in an onsite kitchen. Water for operations is sourced from the Orange River. The guesthouse mainly targets travellers between Namibia and South Africa, requiring a halfway stopover, and for business persons working in Noordoewer and surrounds, where the availability of accommodation is very limited.

Normal activities associated with the operations of a tourism facility continue on a daily basis. It involves, among others, tasks such as booking of guests, ordering food, beverages and cleaning materials, guest reception, preparation of food, cleaning and laundry services, garden and grounds maintenance, and various office related activities. Operational activities are performed by a staff complement that includes skilled, semi-skilled and unskilled labour.

The regional council is invited to provide comment, if any, to the environmental consultant. The regional council will further be provided with an opportunity to provide input that will be considered in the drafting of the management plan. All comments can be sent to:

Fax: 088-62-6368 or **E-Mail:** guesthouse@thenamib.com

Should you require any additional information please contact Geo Pollution Technologies at telephone 061-257411.

Sincerely,
Geo Pollution Technologies

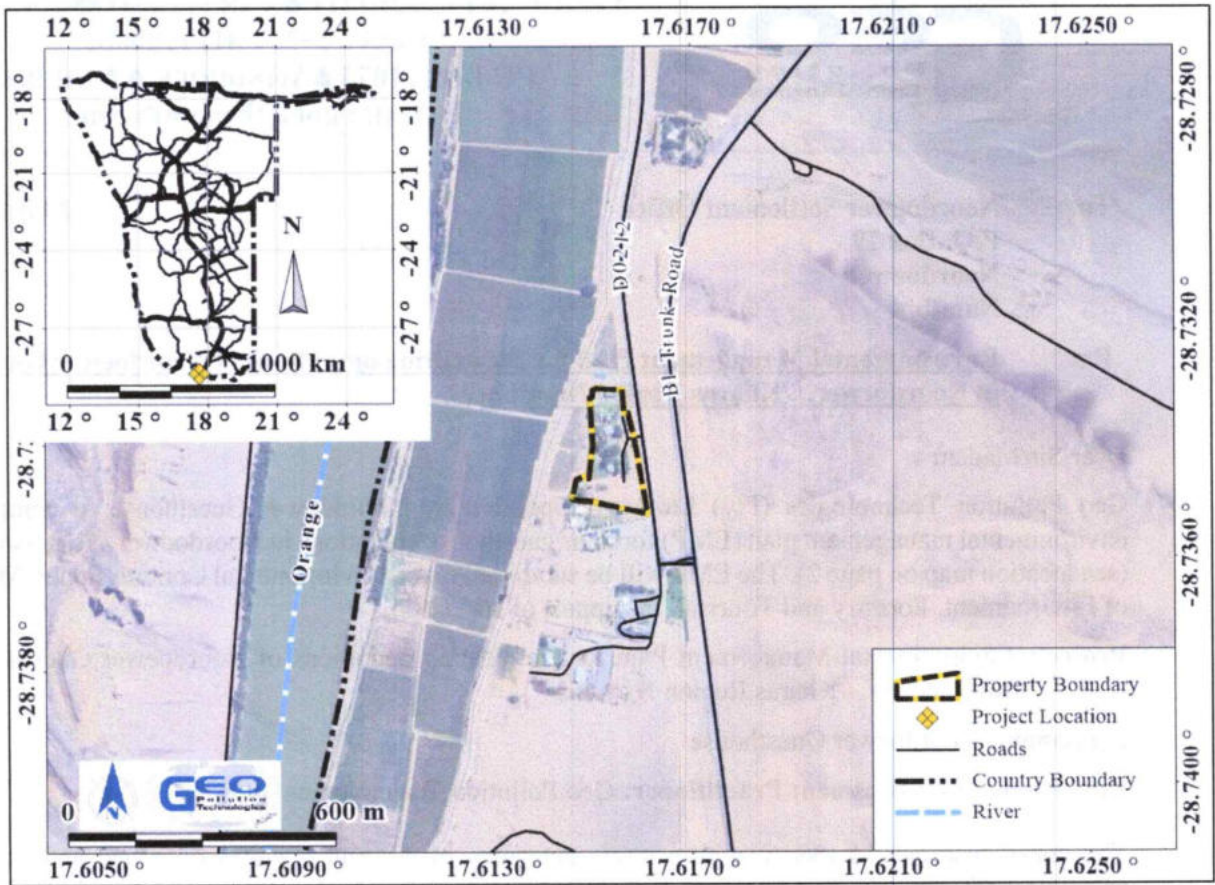
Quzette Bosman
Social and Environmental Assessment Practitioner

Kharas Regional Council
05/05/2026

[Signature]

Directors:

COPY



Project Location

COPY