

**THE ENVIRONMENTAL MANAGEMENT PLAN (EMP) FOR
THE EXISTING PA LOOTS T/A BRANDBERG SERVICE
STATION IN UIS IN THE ERONGO REGION TO SUPPORT THE
APPLICATION FOR ENVIRONMENTAL CLEARANCE
CERTIFICATE (ECC)**

VERSION: DRAFT

ECC APP NO: 007345



Author(s): Ms. Milika Dineinge

Company: Excel Dynamic Solutions (Pty) Ltd

Telephone: +264 (0) 61 259 530

Fax2email: +264 (0) 886 560 836

Email: info@edsnamibia.com

Client: PA Loots T/A Brandberg Service Station

TABLE OF CONTENTS

LIST OF FIGURES	i
1 INTRODUCTION.....	2
1.1 Project Background.....	2
1.2 Purpose of the updated Environmental Management Plan Report.....	4
1.3 Appointed Environmental Assessment Practitioner	5
2 EMP ROLES AND RESPONSIBILITIES	5
2.1 Environmental Management Plan Actions and Audit	5
3 ENVIRONMENTAL AUDIT	5
3.1 Project Activity Summary and Compliance Audit	5
3.2 Management Action Plan: Operation (and Maintenance) Phase	7
3.3 Management Action Plan: Decommissioning Phase	17
4 CONCLUSION AND RECOMMENDATIONS.....	24

LIST OF FIGURES

Figure 1: Location of the fuel retail facility in Uis	3
Figure 2 Some of the fuel retail facility areas.....	30
Figure 3: The general topography of the project area	34
Figure 4: The hydrological map of the project area	35
Figure 5: the soil types found within and on the surrounding of the project area.....	36
Figure 6: the general geology of the project area	37

1 INTRODUCTION

1.1 Project Background

This Environmental Management Plan report is prepared on behalf of the PA Loots T/A Brandberg Service Station, (hereinafter referred to as *the Proponent*). PA Loots T/A Brandberg Service Station supplies fuel and related services to residents, miners, and passing traffic/ travelers. The Proponent plans to continue operating a Fuel Retail Facility (Filling Station hereafter) at Erven 104 in Uis, in the Erongo Region. The Filling Station has existed since 2022. The Filling Station locality map is shown in Figures 1.

The environmental management plan report summarizes the fuel retail facility's environmental performance. The audit report is prepared as per the requirements of the Environmental Impact Assessment (EIA) Regulations No. 30 of 2012 gazetted under the Environmental Management Act (EMA), 2007, (Act No. 7 of 2007).

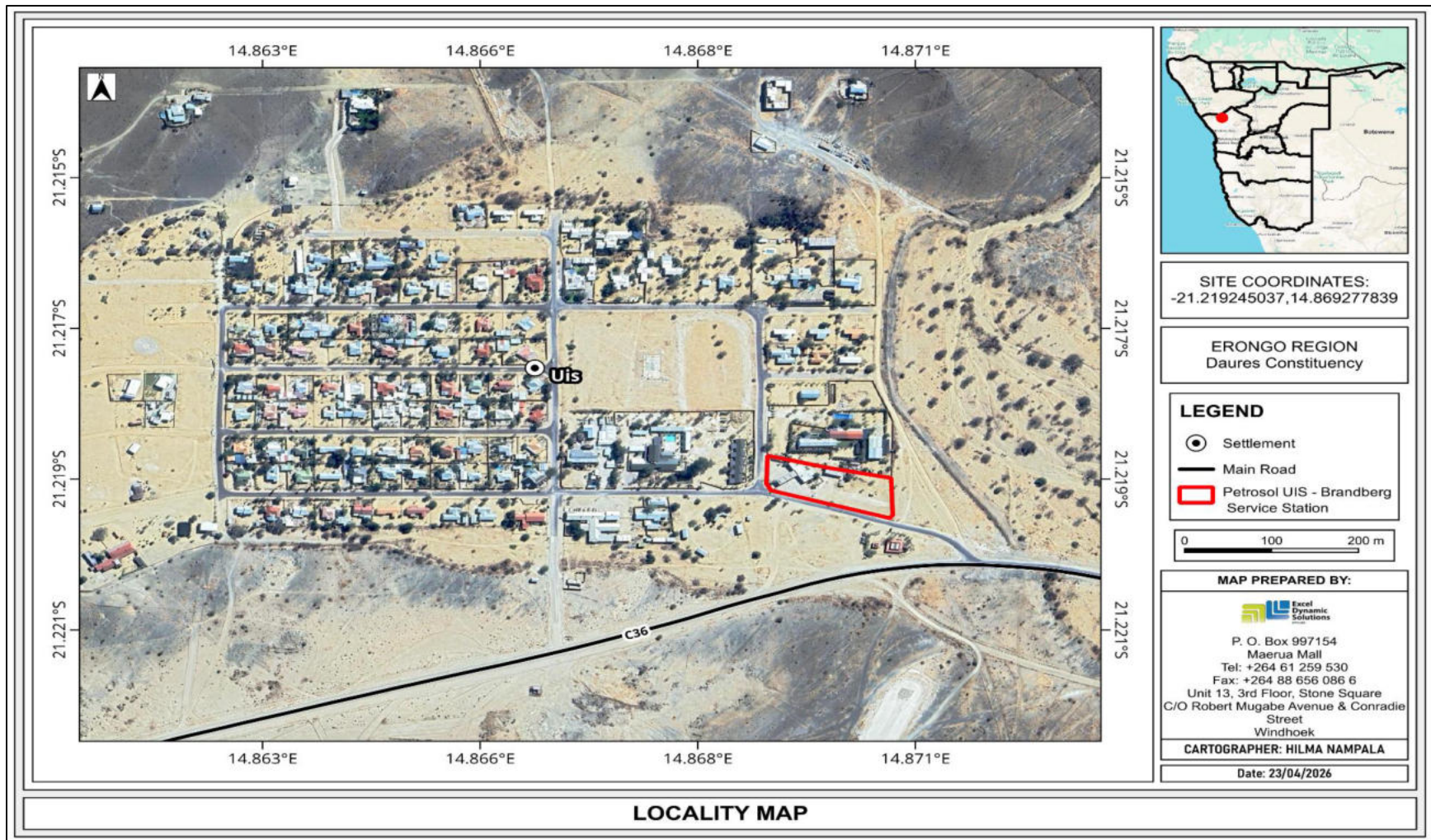


Figure 1: Location of the fuel retail facility in Uis

1.2 Purpose of the updated Environmental Management Plan Report

An Environmental Management Plan Report links the impacts identified in the EIA Process to the required environmental management measures and preparedness responses on the ground during project implementation and operation, as assessed during compliance monitoring.

The compilation of this updated Environmental Management Plan and/or Audit Report is one of the requirements (scope of work) presented to EDS by PA Loots T/A Brandberg Service Station, to ensure environmental compliance with reference to the Environmental Management Plan (EMP), which was prepared as a legal requirement by Section 8 of the Environmental Management Act (EMA), No.7 of 2007 and its 2012 Environmental Impact Assessment (EIA) Regulations.

The Report documents the progress made in environmental compliance for the fuel storage facility's operations. The phases of the project are summarized below:

- **Operation and maintenance** - This is the phase during operation where the Proponent carries out fueling and undertakes related activities on site. It is also the phase during which maintenance of the area, equipment and machinery is expected to be done by the Proponent.
- **Environmental Monitoring Requirements** - In order to support and ensure that the proposed mitigation measures are achieving the desired results, a monitoring plan must be implemented alongside the mitigation plan.
- **Decommissioning and Rehabilitation** – This is the phase during which operations at the fuel retail facility cease. The decommissioning of operations may be considered once the need for the fuel retail facility diminishes. During the operational phase and before decommissioning, the Proponent will need to implement site rehabilitation measures.

It is expected of PA Loots T/A Brandberg Service Station and its employees and/or contractors that they guide operations on site to ensure that impacts on the environment are avoided or, if unavoidably, limited.

1.3 Appointed Environmental Assessment Practitioner

Excel Dynamic Solutions (Pty) Ltd has been appointed as the external Environmental Control Officer (ECO) to ensure EMP compliance with the conditions of authorization for operations at the Fuel Retail Facility, to perform environmental monitoring and auditing, and to produce an updated EMP and environmental compliance report for the proponent. This document was compiled by Ms. Milika Dineinge.

2 EMP ROLES AND RESPONSIBILITIES

As the ECC holder, the Proponent is ultimately responsible for implementing the updated EMP and has delegated responsibility for its effective implementation to Excel Dynamic Solutions (Pty) Ltd for the time period covered by this audit.

2.1 Environmental Management Plan Actions and Audit

The EMP's management actions aim to avoid potential negative impacts wherever possible. Where impacts cannot be avoided, measures are provided to reduce their significance. It is therefore important for the Proponent/Environmental Manager to ensure adherence to the management actions.

Management actions recommended for the potential impacts rated in the EIA carried out for the Fuel Retail Facility were based on the two project phases listed below:

- Phase 1: Operational and maintenance (**Table 1**)
- Phase 2: Decommissioning and Rehabilitation (**Table 2**)

The people responsible at PA Loots T/A Brandberg Service Station should assess these commitments in detail and should acknowledge their commitment to the specific management actions detailed in the EMP. The compliance, thereof, is measured in **Tables 1** and **2**.

3 ENVIRONMENTAL AUDIT

3.1 Project Activity Summary and Compliance Audit

The Fuel Retail Facility has existed since 2022. Therefore, this audit assessment and EMP update cover the entire operational period, as no audits were conducted during the facility's existence.

EDS has performed an Environmental Site Audit, in conformance with the Scope of Work developed in cooperation with the client and the provisions of EMA 7 of 2007. This assessment has found no evidence of Recognized Environmental Conditions (RECs) associated with the facility.

Site observation details are presented in **Appendix A**.

3.2. Management Action Plan: Operation (and Maintenance) Phase

The management actions recommended for this phase are presented in **Table 1** below.

Table 1: Audit on Management Action Plan for the Operation and Maintenance Phase

Environmental Feature	Management Actions	Observations	Compliance comment	Corrective Action/Recommendation
EMP availability	Employees appointed for operation and maintenance on the respective site must ensure that all personnel have access to a copy of the EMP.	Fuel Retail Facility have no ECC, hence no EMP has been drafted yet.	NON-COMPLIANT	Environmental Coordinator/Proponent to ensure a copy of the updated EMP is made available at the Property.
EMP training	Employees appointed to operation and maintenance on the respective site must ensure that all personnel are aware of the health, safety, and environmental considerations applicable to their work.	Personnel on the site have been informed of all the OHS&E issues	NON-COMPLIANT	Environmental Coordinator/Proponent to ensure Property employees and contractors are afforded training opportunities on the updated EMP.
Employment and skills transfer	Provision of employment to residents of Uis	Employment of residents is prioritised	COMPLIANT	N/A

Environmental Feature	Management Actions	Observations	Compliance comment	Corrective Action/Recommendation
Visual Impacts (sense of place)	All the necessary options to improve the aesthetic of the site should be considered and incorporated into the activities of the operation of the facility.	The site is kept tidy and shows consideration of the natural aesthetic of the site, and conforms to the standard industrial set up of the neighborhood.	COMPLIANT	N/A
Ecological Impact	All the necessary options to preserve the natural ecological settings	Due to the nature of the operation, their environment is not in the natural state. No fauna on site, but there is some visible flora close to the site.	COMPLIANT	N/A
Air Quality	All venting systems and procedures have to be designed according to SANS standards	Vapour emissions are minimal and site specific and pose a limited threat to personnel on site.	COMPLIANT	N/A

Environmental Feature	Management Actions	Observations	Compliance comment	Corrective Action/Recommendation
<p>hydrocarbon vapours are released during delivery due to incomplete containment of fuel and venting of tanker's compartments. Vapours can also be released during the filling of road tankers.</p>				
<p>Waste Generation</p>	<p>Contaminated fuel products that can no longer be used in the market must be disposed of in the hazardous waste section of a municipal dump, or, where possible, transferred to waste oil recycling facilities.</p>	<p>Hazardous waste is collected and removed from the site regularly.</p>	<p>COMPLIANT</p>	<p>N/A</p>
	<p>All other domestic waste should be disposed of timeously to maintain visual orderliness, but more importantly, to avoid liquid waste entering the soil substrate</p>		<p>COMPLIANT</p>	<p>N/A</p>

Environmental Feature	Management Actions	Observations	Compliance comment	Corrective Action/Recommendation
	Contaminated soil can be remediated in accordance with accepted procedures at a site dedicated to this purpose.		COMPLIANT	N/A
	Liaise with the Municipality regarding waste management and hazardous waste handling.		COMPLIANT	N/A
	A register of hazardous waste disposal should be kept. This should include the type of waste, volume, as well as the disposal method/facility.		COMPLIANT	N/A
	Any complaints received regarding waste should be taken note off.		COMPLIANT	N/A
Health and Safety	<p>Implementation of a health and safety management system will reduce health and safety related risks.</p> <p>Typical mitigating measures within the health and safety management systems are: -</p> <ul style="list-style-type: none"> • Job hazard analysis • Operational and procedural manuals • NEBOSH (or equivalent) certified Health and Safety training of staff • Regular inspections and maintenance of all safety equipment and structures 	<p>Implemented.</p> <p>A bi-annual report of all incidents reported is compiled, including inspection and maintenance dates of equipment and structures .</p> <p>Health and Safety Training is conducted</p>	PARTIALLY COMPLIANT -	Workers did not receive training on how to use first aid kits or fire extinguishers.

Environmental Feature	Management Actions	Observations	Compliance comment	Corrective Action/Recommendation
	<ul style="list-style-type: none"> • Implement housekeeping rules • Colour coding areas, pipes, equipment and substances • Signage for Personal Protective Equipment (PPE) (e.g. protective clothing like safety boots and hard hats) • Safe work procedures and permits to work • Clearance certificates for confined spaces • Emergency response plans • Regular reviews of Material Safety Data Sheets(MSDS) in training • First aid training of supervisors and volunteering staff and treatment • Medical procedures and emergency services must be available on site or close by • Daily safety moments and/or drills • Protective equipment e.g. handrails on top of rail or road tankers • Implement regulations for handling fuel 			

Environmental Feature	Management Actions	Observations	Compliance comment	Corrective Action/Recommendation
Noise	<p>The World Health Organisation (WHO) Guidelines for Community Noise Levels (1999) must be followed to prevent hearing impairment. Noise levels in industrial areas are limited to an average of 70 dB over a 24-hour period, with maximum noise levels not exceeding 110 dB during the period.</p> <p>All noise complaints and additional data must be included in the health and safety report.</p>	A bi-annual report of all incidents reported is compiled, including inspection and maintenance dates of equipment and structures.	COMPLIANT	N/A
Groundwater Contamination	Spill control structures and procedures must be in place in accordance with SANS 089-1 and SANS 089-3, or better, including impounding around loading areas by bunding with appropriate slopes of 1:100.		COMPLIANT	N/A
	All fuelling should be carried out on surfaces provided for this purpose—E.g. Concrete slabs with regularly maintained seals between slabs.		COMPLIANT	N/A
	The procedures followed to prevent environmental damage during service and maintenance, and compliance with these procedures, including the correct use of sumps and regular reporting of spillages, must		COMPLIANT	N/A

Environmental Feature	Management Actions	Observations	Compliance comment	Corrective Action/Recommendation
	be audited and corrections made where necessary.			
	Proper training of operators must be conducted on a regular basis.		COMPLIANT	N/A
	Any spillage of more than 200 litre must be reported as per the Petroleum Products License. Spill clean-up kit must be available on site as per the relevant Material Safety Data Sheets		COMPLIANT	N/A
	Contingencies for the changes in pressure and temperature between Uis and the destination must be in place when filling tankers in Uis. Avoid overfilling of tanks in Uis Position tankers over bunded areas to prevent soil contamination, especially during rainy season to prevent runoff to nearby drainage systems or infiltration towards the water table.		COMPLIANT	N/A
Fire and Explosion Hazard	<i>Safe Offloading/Loading Procedures must be followed:</i> <ul style="list-style-type: none"> • Coupling of hoses should be tight and old perished materials should be replaced before leaks occur. 		COMPLIANT	N/A

Environmental Feature	Management Actions	Observations	Compliance comment	Corrective Action/Recommendation
	<p>Safe Handling Procedures must be followed:</p> <ul style="list-style-type: none"> • Use non-sparking tools and explosion-proof equipment. Use in well-ventilated area away from all ignition sources. • Keep product away from high-energy ignition sources, heat, sparks, pilot lights, static electricity, and open flames. 		COMPLIANT	N/A
	<p>All liquid hydrocarbon storage containers should be grounded and bonded.</p> <p>Products must be stored where they are not affected by heat.</p>		COMPLIANT	N/A
	<p>Storage and Handling Procedures must be followed:</p> <ul style="list-style-type: none"> • Electrical equipment and fittings must comply with local fire prevention regulations for this class of product. Refer to national or local regulations covering safety at petroleum handling and storage areas for this product 		COMPLIANT	N/A

Environmental Feature	Management Actions	Observations	Compliance comment	Corrective Action/Recommendation
	<ul style="list-style-type: none"> Emergency training and an emergency drill program must be implemented to be given at least every 6 months on Emergency Procedures. 			
	<p><i>Fire Fighting and Fire Prevention:</i></p> <ul style="list-style-type: none"> All fire precautions and fire control at the site must be in accordance with SANS 089-1, or better. Firefighting measures, as per the Material Safety Data Sheets of the product, should be adhered to. All personnel must be sensitised about responsible fire protection measures and good housekeeping such as the removal of flammable materials (e.g. rubbish, dry vegetation, and hydrocarbon-soaked soil) from the vicinity of the installation. Regular inspections should be carried out to check for these materials at the site. All fuel storage and handling facilities in Namibia must comply with strict safety distances as prescribed by SANS. There must be sufficient water available for firefighting purposes, as according to the SANS 089-1 specifications A holistic fire protection and prevention plan, including an emergency response plan, a firefighting plan and a spill recovery plan is needed. 		COMPLIANT	N/A

Environmental Feature	Management Actions	Observations	Compliance comment	Corrective Action/Recommendation
	<ul style="list-style-type: none"> Regular surveys of the fire-fighting equipment and water supply should be conducted. The operations must have an integrated fire prevention plan, which considers the regulations stipulated in sections 47 and 48 of the Petroleum Products and Energy Act, 1990 (Act No. 13 of 1990). 			
Traffic	Uploading of fuel should remain within the working hours as agreed upon in writing for operations of the facility, in order to limit traffic congestion.		COMPLIANT	N/A
	An efficient fuel uploading schedule must be implemented.		COMPLIANT	N/A
Security	Fitness for work certificates for all security officers must be issued monthly. Daily alcohol testing should be conducted by an authorised person at the start and end of each shift.		COMPLIANT	N/A

3.3 Management Action Plan: Decommissioning and Rehabilitation Phase

Table 2: Management action plans for the Decommissioning and Rehabilitation Phase

Environmental Feature	Management Actions/Monitoring Objectives	Observation	Compliance	Recommended Action
<p>Waste production</p>	<p>All re-usable pipelines, pumps, tanks, valves and other equipment must be removed to another site or sold. Those that can be reused must be scrapped properly. Any items that cannot be reused must be scrapped appropriately.</p> <p>Upon demolition of buildings and concrete, the rubble must be removed from the property and taken to an approved dumpsite designated by the Henties Bay Municipality (the closest Municipality to Uis).</p> <p>Rehabilitation, if necessary, is to be done using funds designated for the purpose.</p>	<p>The project has not reached this stage.</p>	<p>COMPLIANT</p>	<p>N/A</p>

Environmental Feature	Management Actions/Monitoring Objectives	Observation	Compliance	Recommended Action
Ecological Impact	Dismantling and removal of any structure should not affect any faunal or floral habitats formed during operation, or any organism that has become dependent on those structures for survival, shelter or breeding.	. The project has not reached this stage.	COMPLIANT	N/A
	The feasibility of relocating fauna or flora must be addressed. Should the species be listed as vulnerable to extinction, the MEFT must be contacted in order to determine the appropriate handling of the situation and determine the proper course of action.		COMPLIANT	N/A
Employment	<p>Have a plan in advance for meeting the Labour Act's requirements, in the case where the Proponent is considering the retrenchment of staff.</p> <p>Where possible, staff can be relocated to another facility or town where business can continue as usual.</p>	The project has not reached this stage	COMPLIANT	N/A

Environmental Feature	Management Actions/Monitoring Objectives	Observation	Compliance	Recommended Action
Dust generation	<p>Regular dust suppression should be included in the Decommissioning Plan for cases of excessive dust.</p> <p>Personnel should be issued dust masks for health and safety.</p> <p>Any rubble that may cause dust must be taken to the dumpsite within a reasonable timeframe.</p>	The project has not reached this stage.	COMPLIANT	N/A
Noise	The World Health Organization (WHO) guideline on maximum noise levels (Guidelines for Community Noise, 1999) to prevent hearing impairment can be followed during the decommissioning phase.	The project has not reached this stage	COMPLIANT	N/A
Visual Impact	<p>Visual impacts could be limited by keeping All decommissioned areas are clean and orderly at all times.</p> <p>Good housekeeping also reduces the risk of injuries</p>	The project has not reached this stage	COMPLIANT	N/A

Environmental Feature	Management Actions/Monitoring Objectives	Observation	Compliance	Recommended Action
	Notice of the commencement of decommissioning should be given to the local authorities, with an invitation to provide feedback at any time on the visual impact.	The project has not reached this stage	COMPLIANT	N/A
	Avoid combining hazardous and non-hazardous waste by providing separate waste containers (bins) for hazardous and domestic/general waste.	The project has not reached this stage	COMPLIANT	N/A
Surface and groundwater contamination	Pollutants in soil and building rubble must be transported away from the site to an approved, appropriately classified waste disposal site. Confirm MSDS information of any remaining fuels, oils or lubricants that must be discarded.	The project has not reached this stage	COMPLIANT	N/A

Environmental Feature	Management Actions/Monitoring Objectives	Observation	Compliance	Recommended Action
	Regulations on sewerage discharge and on the chemicals that may or may not be discharged into the sewerage system must be followed.			
Health, Safety and Security	<p>Adequate health and safety measures must be included in the decommissioning plan to ensure the safety of staff on site, and include:</p> <ul style="list-style-type: none"> • Proper training of operators. • First aid treatment; • Medical assistance; • Emergency treatment; • Prevention of inhalation of fumes (fuel); • Protective clothing, footwear, gloves and belts; safety goggles and masks; • Manuals and training regarding the correct handling of materials should be in place and updated as new or updated material safety data sheets become available; Risks might be lower, but still exist, especially if tanks must be entered for 	The project has not reached this stage	COMPLIANT	N/A

Environmental Feature	Management Actions/Monitoring Objectives	Observation	Compliance	Recommended Action
	<p>inspections. Confined space training will be required.</p> <ul style="list-style-type: none"> • 24-hour security surveillance in case of opportunistic activities. 			
<p>Fire and Explosion Hazard</p>	<p>All relevant regulations and precautions should be in place, as they were during the Operational Phase.</p> <p>All personnel have to be sensitised about responsible fire protection measures and good housekeeping.</p> <p>Regular inspections and tests should continue to be conducted of firefighting equipment and pollution-control materials at the fuel storage facility.</p> <p>All fire precautions and fire control at the fuelstorage facility must comply with SANS or better.</p>	<p>The project has not reached this stage</p>	<p>COMPLIANT</p>	

Environmental Feature	Management Actions/Monitoring Objectives	Observation	Compliance	Recommended Action
	The holistic fire protection and prevention plan should still be utilised.			

SUMMARY OF COMPLIANCE

This environmental audit has identified 28 management actions. After on site observation, two (2) out of the 28 management actions have been identified as **Non-Compliant**. One (1) of the 28 management actions was identified as **partially-Complaint**. Twenty-five (25) of the management actions were observed as **Compliant**. The large proportion of *Compliant* actions recorded for the environmental site audit therefore indicates that the Proponent is generally Compliant with the project's management and monitoring action plans.

PA Loots T/A Brandberg Service Station has, to date, paid attention to the project's environmental aspects and compliance. There were no serious issues of non-compliances identified during this Environmental Audit.

The 2 non-compliances may be treated as a single issue, requiring a single solution/intervention. The identified issue has, to date, had no significant negative effects on fuel retail facility operations, employees, or the environment and is therefore regarded as minor. The issue of Partial Compliance identified is:

1. Absence of the EMP copy on site and training of employees on its content, which needs to be done by a qualified environmental professional.

Although considered minor at this stage, training of employees and readily access to a copy of the EMP will be relevant in the cases of observed irresponsible and/or unsustainable activity in the environment.

4 CONCLUSION AND RECOMMENDATIONS

The minor non-compliances identified in this environmental site audit report require corrective action to ensure the operations of PA Loots T/A Brandberg Service Station 's fuel retail facility achieve a 100% Compliance rate. The assessment has found no evidence of HRECs associated with the facility. Recommendations for corrective action are as follows:

- Provide a copy of the updated EMP and follow up with training of all involved employees and stakeholders on the EMP content.
- Implement a penalty system for EMP Compliance to enforce accountability towards environmental management within the fuel retail facility operations.

The potential positive and negative impacts of the fuel storage activities were identified, assessed, and mitigation measures were implemented. Mitigation measures need to be adhered to at all times. Most importantly, monitoring of the environmental components described in the Environmental Management

Plan should be conducted by the Proponent and an appointed Environmental Officer or any applicable Competent Authority.

The next site inspection will be undertaken once the ECC is granted, and a resultant biannual report will be produced thereafter.

APPENDIX A ENVIRONMENTAL SITE VISIT AUDIT AND INTERVIEW REPORT



Author(s): **Ms. Milika Dineinge**
Reviewer: **Ms. Aili lipinge**
Company: **Excel Dynamic Solutions (Pty) Ltd**
Telephone: **+264 (0) 61 259 530**
Fax2email: **+264 (0) 886 560 836**
Email: **info@edsnamibia.com**

Client: **PA loots T/A Brandberg Service Station**

1 EXECUTIVE SUMMARY

Excel Dynamic Solutions Pty Ltd (EDS) has performed a Phase I Environmental Site Audit (“ESA”) of the Fuel Retail facility in Uis (**PA loots T/A Brandberg Service Station**) in the Erongo Region. EDS was authorized to perform this work in March 2026 by PA loots T/A Brandberg Service Station. The ESA was conducted in accordance with the scope and limitations of the Environmental Management Act No. 7 of 2007 and the EIA Regulations of 2012, the Petroleum Products and Energy Act of 1990 and its regulations, and the South African National Standard (SANS) 10089. An independent, qualified environmental professional has prepared this ESA.

The Fuel retail facility comprises buildings that include a mini shop, storeroom, toilets, and offices. The remainder of the facility area contains underground storage tanks, fire extinguishers, fire hydrants for emergency control, product pipelines, and a control room for monitoring and controlling product movement. The offloading areas have drainage pits connected to the separator pit for wastewater collection. The fuel storage capacity consists of three tanks, each holding 23,000 litres.







Petrosol 

PLEASE NOTE:
It is the vehicle owner's responsibility to:

1. Make 100% sure that the correct fuel/grade is dispensed into his/her vehicle.
2. Vehicle bonnet is closed properly.
3. Fuel and oil caps are put back properly.
4. He/she receives a receipt for fuel supplied to him/her.
5. He/she do not leave vehicle unattended at the pump.
6. Presents his/her fuel/ticket card to the attendant.
7. All refuels must be accompanied by an order stating the clients name, vehicle reg no. and required litres.
8. All drivers are responsible to make sure that correct litre are involved or written correctly in after hours.
9. Make sure that caps of cans, bottles, drums, and any other containers on your vehicle is sealed properly before leaving the premises. Petrol attendants will not be responsible for any spillage after you have left the premises.

We appreciate your co-operation
Management

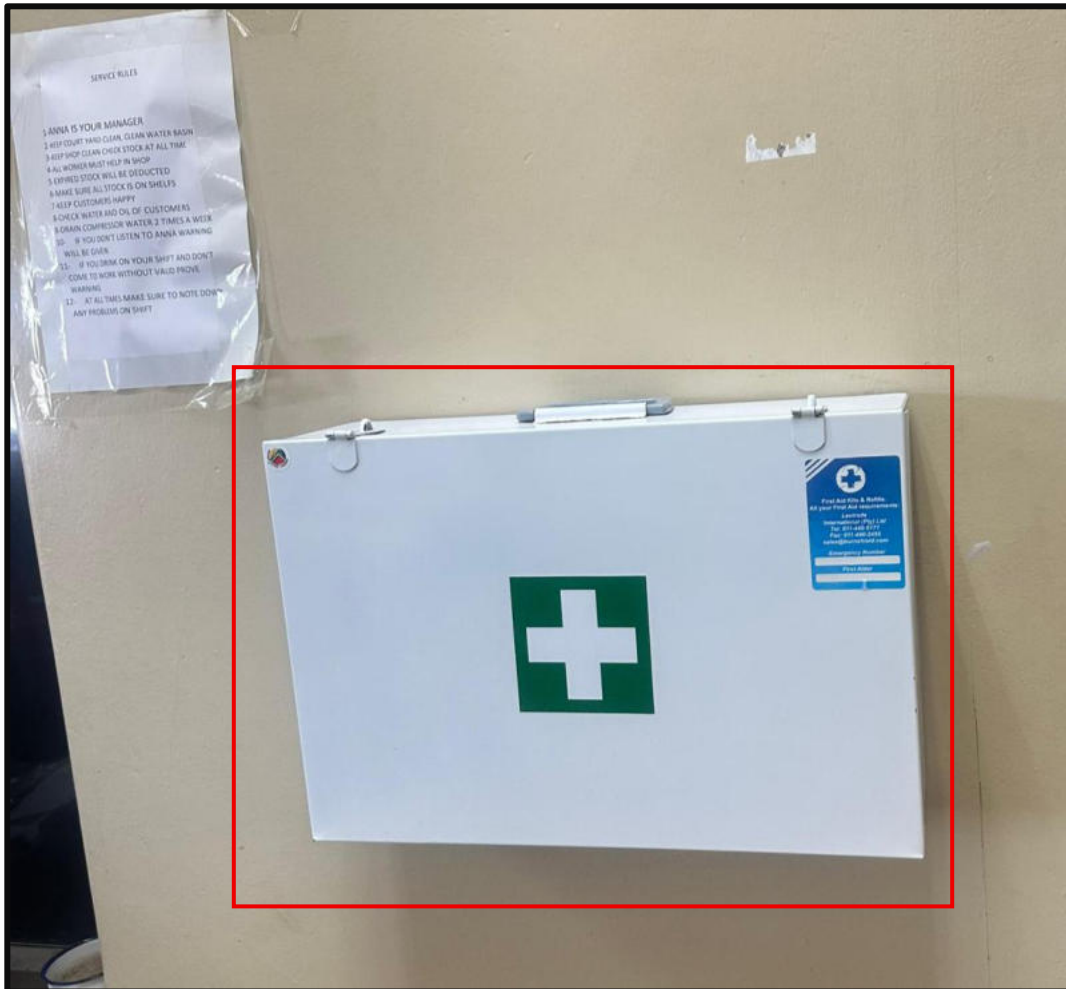


Figure 2 Some of the fuel retail facility areas

1.1 Summary of the findings of the audit of the fuel retail station facility

EDS has performed an Environmental Site Audit, in conformance with the Scope of Work developed in cooperation with the client and the provisions of EMA no. 7 of 2007. This assessment has revealed no evidence of Recognized Environmental Conditions (RECs) in connection with the fuel retail facility.

A harmless condition is a condition that generally does not present a threat to human health or the environment, and that typically would not be the subject of an enforcement action if brought to the attention of appropriate governmental competent bodies.

A historical recognized environmental condition (HREC) refers to an environmental condition which would have been considered a REC in the past, but which is no longer considered a REC based on subsequent assessment and/or remediation of any contaminants to below the most restrictive (generally

residential) cleanup target concentrations or regulatory closure with no formal or implied restricted uses. The assessment has revealed no evidence of HRECs in connection with the fuel retail facility

1.2 Recommendations and Conclusions

Based on the information provided in this report, EDS recommends that no further action be required at the fuel retail facility and that the MEFT grants the Environmental Clearance Certificate (ECC).

2. INTRODUCTION

2.1 Purpose of the Assessment

Excel Dynamic Solutions Pty Ltd (EDS) has performed a Phase I Environmental Site Audit (“ESA”) of the Commercial fuel retail facility in Uis in the Erongo Region. EDS was authorized by PA Loots T/A Brandberg Service Station to perform this work in March 2026.

This ESA has been performed by an independent environmental professional, as required under the Environmental Management Act, No. 7 of 2007. Any exceptions to, or deletions from, this practice are described in Section 1.0 of this report. The location of the Subject fuel retail facility and surrounding properties is shown in Figure 1.

The purpose of the ESA is to identify Recognized Environmental Conditions (RECs), Controlled Recognized Environmental Conditions (CRECs), Historical Recognized Environmental Conditions (HRECs), and to minimize conditions associated with petroleum product facilities, as stipulated in the EMA of 2007.

The term REC is defined as **“the presence or likely presence of any hazardous substances or petroleum products in, on, or at the fuel retail facility:** (1) due to release to the environment; (2) under conditions indicative of a release to the environment; or (3) under conditions that pose a material threat of a future release to the environment.”

The term CREC is defined as “a recognized environmental condition resulting from a past release of hazardous substances or petroleum products that has been addressed to the satisfaction of the applicable regulatory authority (for example, as evidenced by the issuance of a no further action letter or equivalent, or meeting risk-based criteria established by regulatory authority), with hazardous

substances or petroleum products allowed to remain in place subject to the implementation of required controls.”

The term HREC is defined as “a past release of any hazardous substances or petroleum products that has occurred in connection with the fuel retail facility and has been addressed to the satisfaction of the applicable regulatory authority or meeting unrestricted use criteria established by a regulatory authority, without subjecting the fuel retail facility to any required controls.”

The term harmless condition is defined as “a condition that generally does not present a threat to human health or the environment and that generally would not be the subject of an enforcement action if brought to the attention of appropriate governmental agencies. Conditions determined to be harmless are not RECs nor CRECs.”

The term Business Environmental Risk (BER) refers to environmental risk considerations that do not meet the threshold for a REC but that EDS believes should be brought to the Proponent's attention and addressed during this assessment.

Typically, a Phase I ESA does not include sampling or testing of air, soil, groundwater, surface water, or building materials. These activities would be carried out in a Phase II ESA, if required.

2.2 Special Terms and Reliance

It is EDS's understanding that this report is to be used and distributed exclusively for purposes of obtaining the ECC. This report of findings was prepared for the exclusive use of PA loots T/A Brandberg Service Station, its contractors, and competent government bodies, such as the Ministry of Environment, Forestry and Tourism (MEFT) and the Ministry of Industries, Mines and Energy (MIME). The contents of this report may not be copied, provided or otherwise communicated to any party other than those associated with PA loots T/A Brandberg Service Station and without the express written consent of PA loots T/A Brandberg Service Station.

2.3 Significant Assumptions

The following assumptions are made by EDS in this report. EDS relied on information derived from secondary sources, including the project coordinator, governmental agencies, the Client (Coordinator), designated representatives of the Client and personal interviews. Except as set forth in this report, EDS has made no independent investigation into the accuracy and completeness of the information derived from secondary sources, including government agencies, the Client, designated representatives of the

Client, and fuel retail facility personal interviews, and has assumed that such information is accurate and complete. EDS assumes information provided by or obtained from the client is accurate and complete. EDS assumes that the Client Coordinator and Client representatives, including the Site Manager, used good faith in answering questions and obtaining information regarding the subject fuel retail facility. This would also include obtaining the relevant documents from previous consultants. EDS also assumes the Client will designate appropriate and knowledgeable people for performance of the Phase II Environmental Assessment including the Site Managers if required in the future.

3. SITE LOCATION

3.1 Subject fuel retail facility

The fuel retail facility is located in Uis, Daures constituency in the Erongo Region.

4. PHYSICAL SETTING

4.1 General Topographic Setting

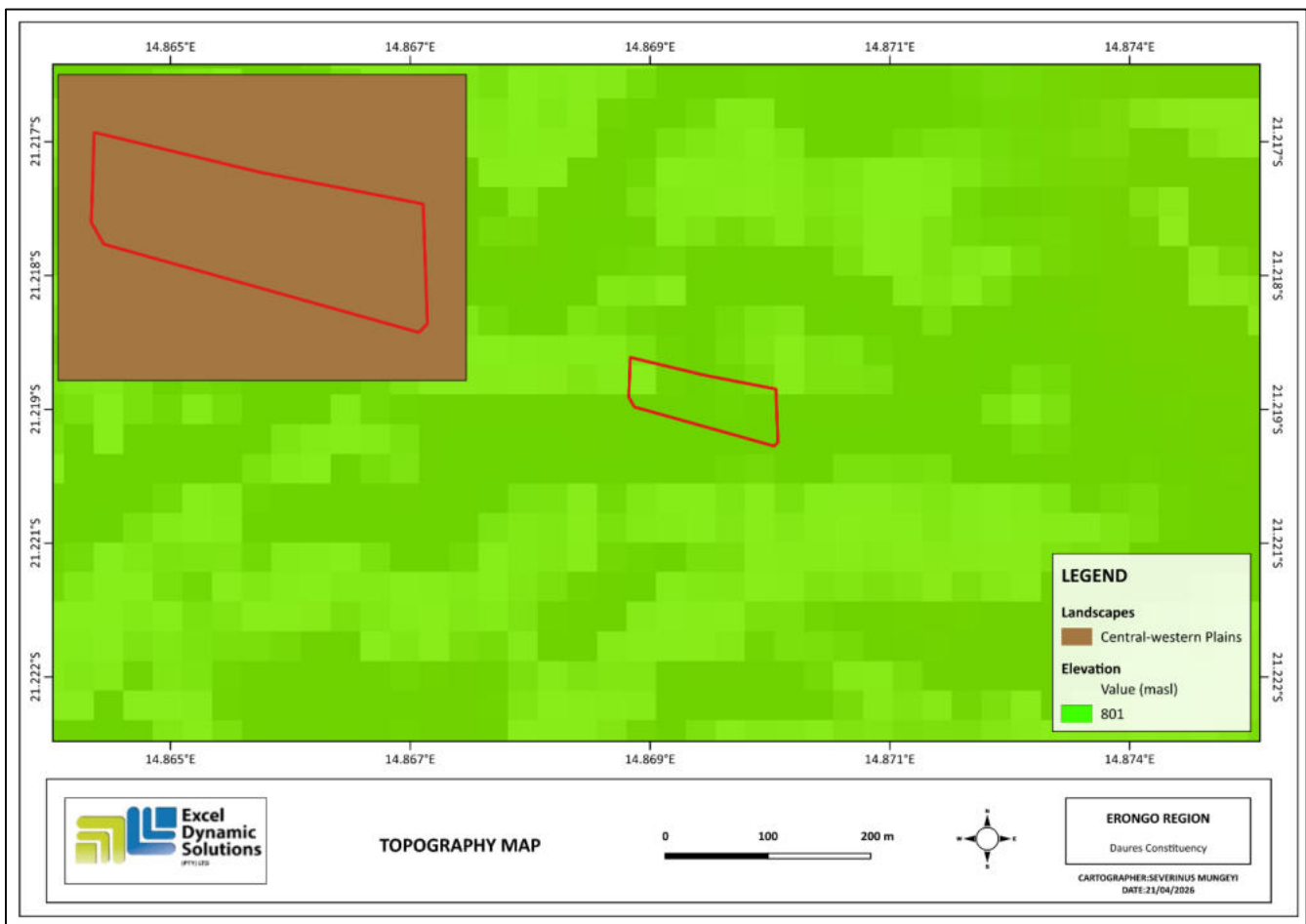


Figure 3: The general topography of the project area

The project area lies at an elevation of approximately 599 metres above sea level and is generally flat. As shown in Figure 3, the fuel service station service is situated within the central-western plains, which are characterized by numerous inselbergs, mainly composed of small granite hills (Mendelsohn et al., 2022).

4.2 Surface Water and Groundwater



Figure 4: The hydrological map of the project area

In terms of groundwater vulnerability, the fuel service station is located in an area of moderate susceptibility, meaning that contaminants could potentially infiltrate the subsurface if not properly managed. Regarding the ground water potential of rock bodies, the site is predominantly composed of rock formations with limited groundwater potential, which is generally considered low (see **figure 4**).

4.3 Soils

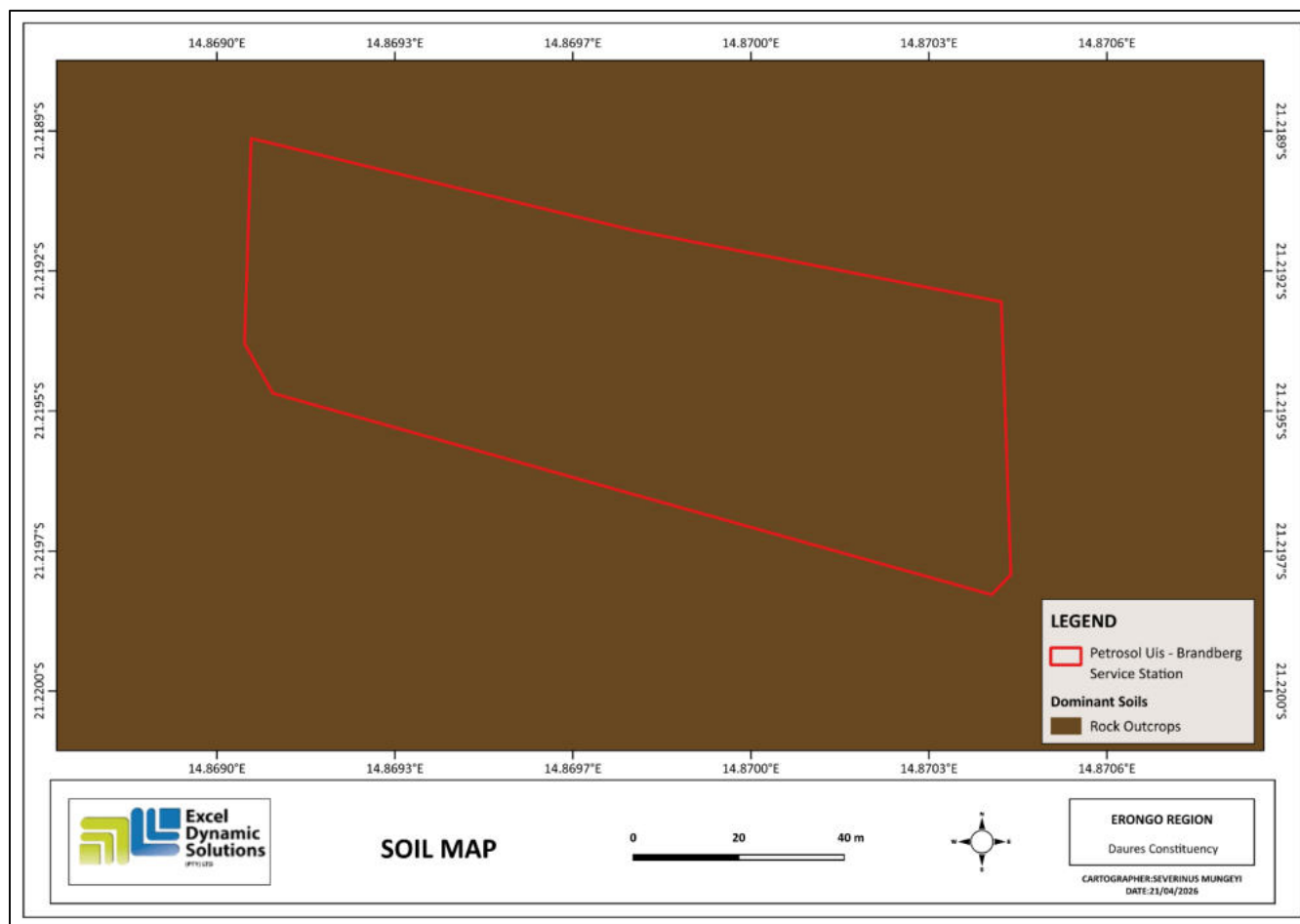


Figure 5: the soil types found within and on the surrounding of the project area

The fuel service station is located in an area characterised by rock outcrops, where soils are generally shallow or absent, typically forming Leptosols and Regosols (Mendelsohn et al., 2022). These conditions are common in hilly and rocky landscapes where erosion exceeds soil formation, resulting in thin, stony soils with low water-holding capacity, which limits support for deep-rooted vegetation and reduces agricultural potential (Mendelsohn et al., 2022).

4.3 Geology

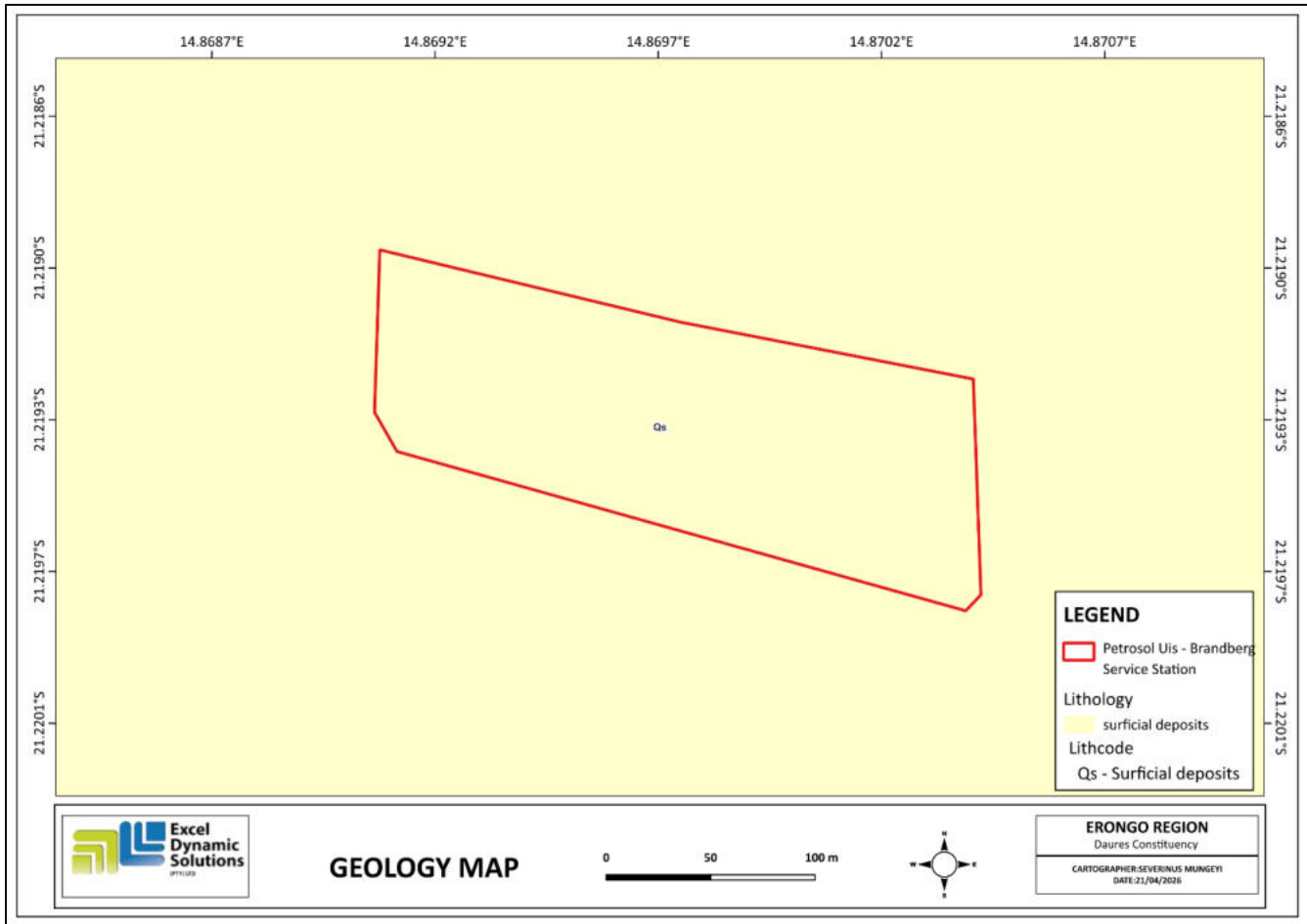


Figure 6: the general geology of the project area

The fuel service station is situated within an area characterized by surficial deposits and is surrounded by them. The Atlas of Namibia describes surficial deposits as young, unconsolidated materials such as sand, gravel, and sediments that overlie the underlying bedrock (Mendelsohn et al., 2022). These deposits are widespread across Namibia, particularly in arid regions, and are often formed through wind and water processes (Mendelsohn et al., 2022). As a result, they typically consist of loose surface materials with varying thickness, influencing soil characteristics and land use potential.

5. RECORD REVIEW

6.1 Environmental Records Review

No Environmental records (environmental audit report) were obtained for EDS by the Project Coordinator (Client).

6.2 Historical Information Review

The following historical information was reviewed:

6.2.1 Historical Topographic Map

EDS reviewed historical topographic maps of the Fuel Retail Facility and surrounding properties using Google Earth and QGIS-generated maps. No special hazards, such as sinkholes, gravel pits, landfills, pipelines, open pits, stockpiled soils or railroad tracks and spurs, were indicated on the Fuel Retail Facility map.

6. DATA GAPS

After reviewing the sources above regarding the Fuel Retail Facility's history, EDS determined that no data gaps would affect the environmental professional's ability to identify RECs for the Fuel Retail Facility, except for the absence of the Environmental Management Plan.

6.1 Specialized Knowledge and Reason for Completing Phase I Audit

Pursuant to EMA 2007, EDS asked a representative of the user of the report, the owner of the fuel retail station facility, if he had any specialized knowledge of environmental conditions associated with the Subject Fuel retail facility.

7. SITE RECONNAISSANCE

EDS conducted a site visit to the fuel retail facility in March 2026 and observed its condition. A depiction of the fuel retail station facility and surrounding area configuration is provided in Figure 1. Weather conditions during the site reconnaissance were bright and cloudless. The visual reconnaissance consisted of observing the fuel station, the fuel pumps and the shop, and systematically traversing the site to provide an overlapping field of view wherever possible. The periphery of the on-site structures was observed along with interior accessible common areas, storage and maintenance areas.

During the fuel retail facility reconnaissance, EDS sought the following items, which could indicate the presence of RECs at the facility.

- ***Hazardous Substances and Petroleum Products in Connection with Identified Uses***

No significant use or generation of hazardous substances is known to occur at the fuel retail facility. No manufacturing, fabrication or assembly operations are conducted on the fuel retail facility.

- ***Odors***

No strong, pungent, or noxious odours were noted or reported that would indicate RECs at the fuel retail station facility were emanating from either area.

- ***Pools of Liquids***

No pools containing liquids likely to be hazardous substances or petroleum products were observed or reported on or adjacent to the fuel retail station facility.

- ***Drums & Hazardous Substance, Petroleum Products and Unidentified Substance Containers***

No drums containing liquids likely to be hazardous substances or petroleum products were observed or reported on or adjacent to the Subject fuel retail station facility.

- ***Heating and Cooling Source***

The office area is heated by electricity supplied by Erongo red and cooled by window-installed air conditioners.

- ***Interior Stains or Corrosion***

No evidence of stains or corrosion on the floors, walls or ceilings at the fuel retail station facility was noted or reported.

- ***Drains and Sumps***

No evidence of sumps was observed.

No significant stained soil or pavement was observed or reported at the fuel retail station facility.

- ***Stressed Vegetation***

No areas of stressed vegetation were observed or reported on or adjacent to the fuel retail station facility.

- ***Solid Waste***

EDS did not observe any areas that appeared to have been filled or graded that would suggest the presence of waste, including, but not limited to, construction debris, demolition debris or other solid waste. No improperly stored solid waste was noted.

- ***Waste Water***

No operations, likely to require a significant wastewater discharge, were noted or reported. Waters entering the sanitary system flow to a neighboring waste collection facilities.

- ***Wells***

No drinking water wells, dry wells, irrigation wells, injection wells, abandoned wells, or other wells were observed or reported.

- ***Septic Systems***

EDS did not observe any on-site septic systems

- ***Copy of EMP***

There is no copy of the EMP or the EMP training manual on site.

8. RECOMMENDATIONS AND CONCLUSIONS

EDS has performed an Environmental Site Audit, in conformance with the Scope of Work developed in cooperation with the client and the provisions of EMA 2007. This assessment has found no evidence of RECs associated with the fuel retail station facility.

A harmless condition is a condition that generally does not present a threat to human health or the environment, and that generally would not be the subject of an enforcement action if brought to the attention of appropriate governmental agencies. This assessment has revealed no evidence of a harmful condition.

An historical recognized environmental condition (HREC) refers to an environmental condition which would have been considered a REC in the past, but which is no longer considered a REC based on subsequent assessment and/or remediation of any contaminants to below the most restrictive (generally residential) cleanup target concentrations or regulatory closure with no formal or implied restricted uses. The assessment has revealed no evidence of HRECs in connection with the fuel retail station facility, except for the following:

No significant data gaps were identified that would affect the environmental professional's ability to identify RECs at the fuel retail station.

Based on the information provided in this report, EDS recommends that No Further Action is required at the fuel retail station facility, and that the MEFT consider granting of the ECC.

9. LIMITATIONS

No environmental assessment or investigation is infallible. Some uncertainty will always exist concerning the presence or absence of potential Recognized Environmental Conditions at a particular fuel retail station facility, irrespective of the rigor of the investigation. Accordingly, EDS does not warrant that Recognized Environmental Conditions, other than those identified in this report, do not exist at the subject fuel retail station facility or may not exist there in the future.

The findings and opinions presented in this report are partially based on information obtained from various sources over which EDS has no control, but believes to be reliable. Nonetheless, EDS does not warrant the authenticity or reliability of the information from these sources.

EDS believes that it has performed the services summarized in this report in a manner consistent with the level of care and skill ordinarily exercised by members of the environmental risk assessment profession practicing at the same time and under similar conditions in the area of the project.

Conclusions regarding the site's condition do not constitute a warranty. If additional information becomes available concerning this site after the date of this report, EDS is under no obligation to revise the conclusions and recommendations of this report.