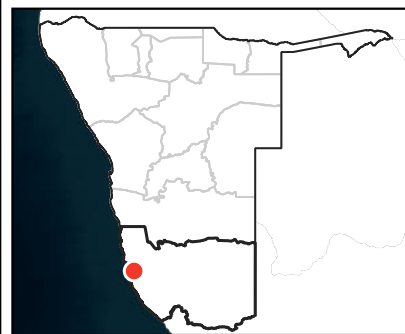




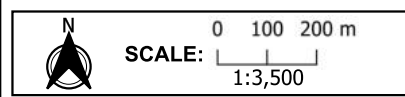
# PROPOSED GRAVEL MINING ACTIVITIES



- LEGEND**
- Water meter
  - Railway
  - Trunk road
  - 22 kV powerline
  - Water pipeline
  - Proposed gravel mining site

Map prepared for:  
**Tortoise Environmental Consultants(TEC)**   
*One Step @ a time*

<b>Date:</b>	June 2025
<b>Site</b>	Lat: -26.700415
<b>Coordinates:</b>	Long: 15.364060
<b>Coordinate System:</b>	GCS WGS 1984 (EPSG 4326) Datum: Wgs 84 Units: Degree

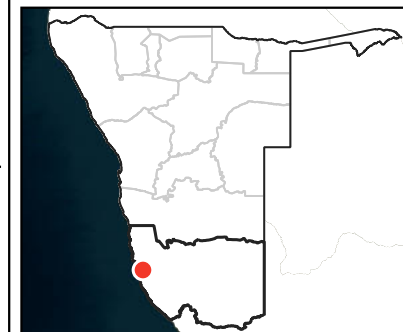


15°21'9"E

15°21'36"E

15°22'3"E

# GRAVEL MINING ACTIVITIES NEAR LÜDERITZ LOCALITY MAP



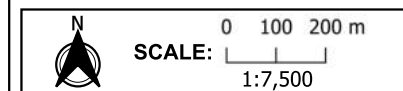
## LEGEND

- Water meter
- Water pipeline
- 11 kV powerline
- 22 kV powerline
- 66 kV powerline
- Trunk road
- Farm boundary
- Town & townlands
- Nampower substation
- State protected area

Map prepared for:

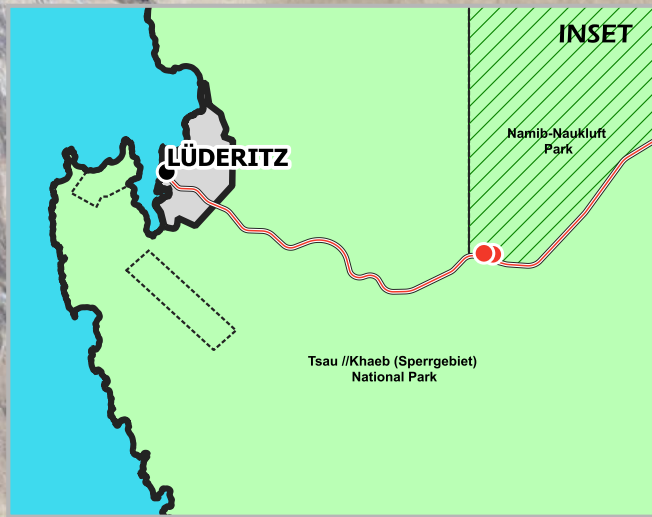
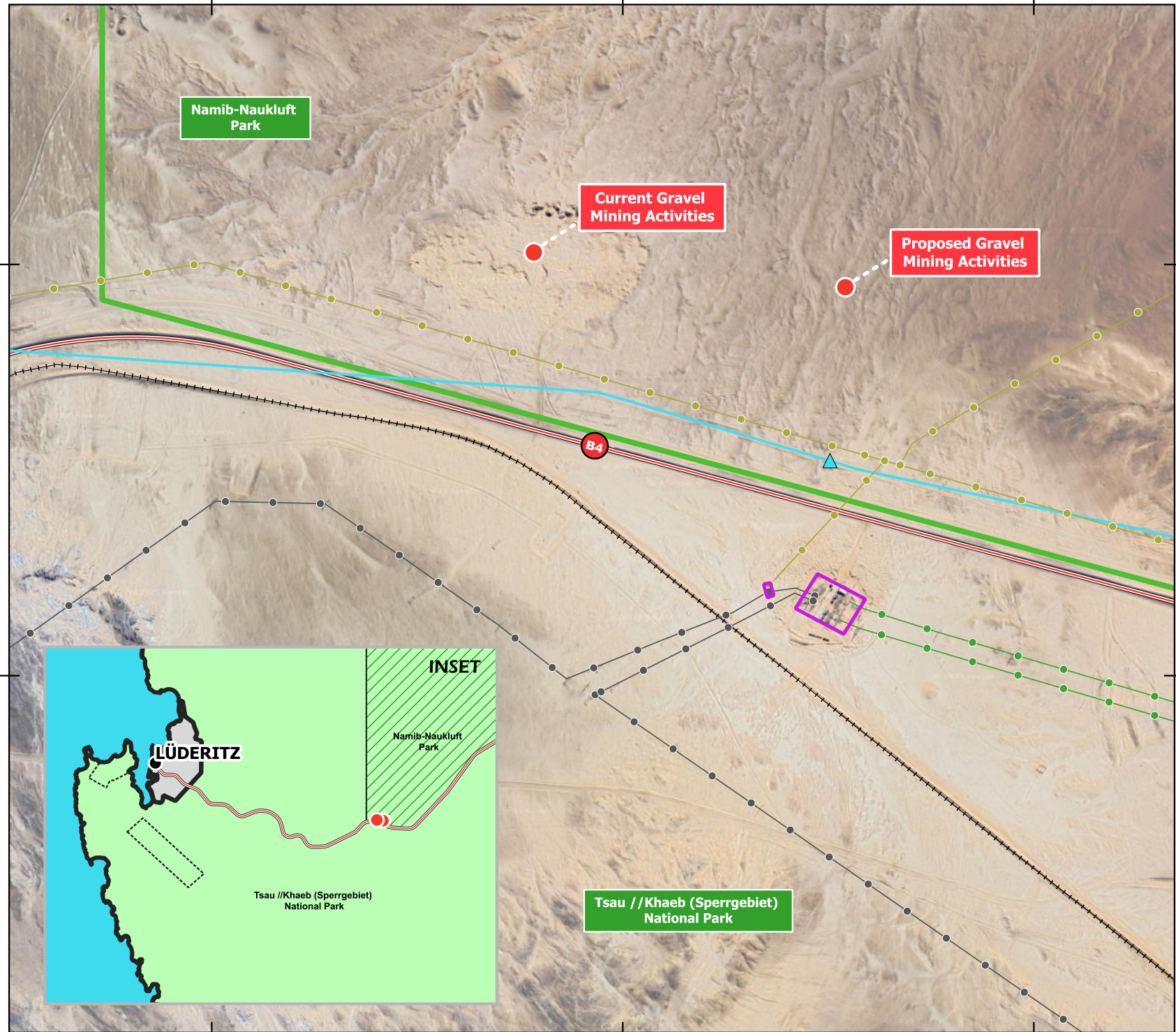


Date:	June 2025
Site	Lat: -26.699780
Coordinates:	Long: 15.358375
Coordinate System:	GCS WGS 1984 (EPSG 4326) Datum: Wgs 84 Units: Degree



26°42'0"S

26°42'27"S



15°21'18"E

15°21'27"E

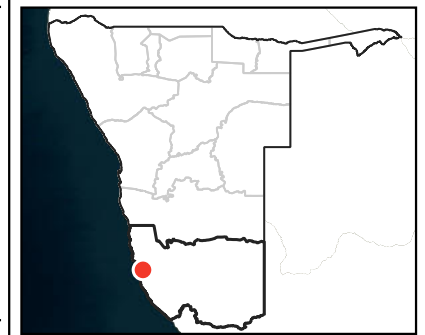
15°21'36"E

15°21'45"E

15°21'54"E

15°22'3"E

# GRAVEL MINING ACTIVITIES



## LEGEND

- ++++ Railway
- == Trunk road
- Water pipeline
- 22 kV powerline
- ▭ Proposed gravel mining activities
- ▭ Current gravel mining site

Map prepared for:



Date:	June 2025
Site	Lat: -26.699780
Coordinates:	Long: 15.358375
Coordinate System:	GCS WGS 1984 (EPSG 4326) Datum: Wgs 84 Units: Degree

N

SCALE: 0 100 200 m

1:4,700



AREA  
20.56 ha

AREA  
15.76 ha

B4