

BACKGROUND INFORMATION DOCUMENT (BID) FOR THE ENVIRONMENTAL ASSESSMENT FOR THE ESTABLISHMENT OF MINING ACTIVITIES ON MINING CLAIMS 69948, 69949, 69950 & 69951 OTUANI VILLAGE, OPUWO DISTRICT, KUNENE REGION, NAMIBIA

PURPOSE OF THIS DOCUMENT

The purpose of this Background Information Document (BID) is to inform all potentially Interested and Affected Parties (I&APs) and stakeholders about the Environmental Impact Assessment (EIA) process being undertaken for the proposed establishment of mining activities for base and rare metals, as well as industrial minerals, on Mining Claims; 69948, 69949, 69950 and 69951, located at Otuanu Village, Opuwo Rural Constituency, Kunene Region, Namibia.

This BID forms part of the public consultation process as required in terms of the Environmental Management Act (No. 7 of 2007) and the Environmental Impact Assessment Regulations (GN 30 of 6 February 2012). The document provides I&APs with an opportunity to:

- Obtain information regarding the proposed project and the EIA process;
- Register as Interested and Affected Parties;
- Submit comments, concerns, or issues for consideration during the Environmental Assessment.

BACKGROUND INFORMATION

The Proponent, Mr. Ivangeruani Virere, intends to undertake the following activity:

- **Environmental Impact Assessment (EIA) for the establishment of mining activities for semi- precious and base and rare metals on Mining Claims; 69948, 69949, 69950 and 69951 located at Otuanu Village, Opuwo Rural District, Kunene Region.**

In terms of the Environmental Management Act (No. 7 of 2007) and the Environmental Impact Assessment Regulations (GN 30 of 2012), the proposed mining activities trigger the listed activities that require the issuance of an Environmental Clearance Certificate (ECC) prior to commencement of any works.

Table 1: List of triggered activities identified in the EA process which apply to the proposed project.

Activity No.	Description of listed activity	Relevance to the proposed project
Activity 3.1 (Mining and Quarrying Activities)	Construction of facilities for activities requiring a licence, right or authorisation under the Minerals (Prospecting and Mining) Act, 1992	Establishment of mining activities for semi-precious stones and base and rare metals.

Activity No.	Description of listed activity	Relevance to the proposed project
Activity 3.2 (Mining and Quarrying Activities)	Other forms of mining or extraction of natural resources, whether regulated or not	The proposed activities include the extraction of semi-precious stones and base and rare metals for commercial purposes
Activity 3.3 (Mining and Quarrying Activities)	Resource extraction, manipulation, conservation and related activities	The proposed activities include mining and handling of mineral resources.

The Proponent has appointed Environclim Consulting Services cc as the independent Environmental Assessment Practitioner (EAP) to undertake the Environmental Assessment and to facilitate the application for an Environmental Clearance Certificate with the Office of the Environmental Commissioner.

In compliance with Regulation 21(2) of the EIA Regulations, this Background Information Document (BID) is distributed to inform potentially Interested and Affected Parties and to invite their participation in the Environmental Assessment process.

DEVELOPMENT DESCRIPTION

Locality

Otwani village is situated about 80 Km south of Opuwo when using the C43 road off the D3705 road from Opuwo to Sesfontein and the Mining Claims; 69948, 69949, 69950 and 69951 are situated about 10 Km west of Otwani settlement, within the Opuwo Rural Constituency, Kunene Region (see **Figure 1, below**). The project area lies entirely in the communal area that is predominated by livestock farming.

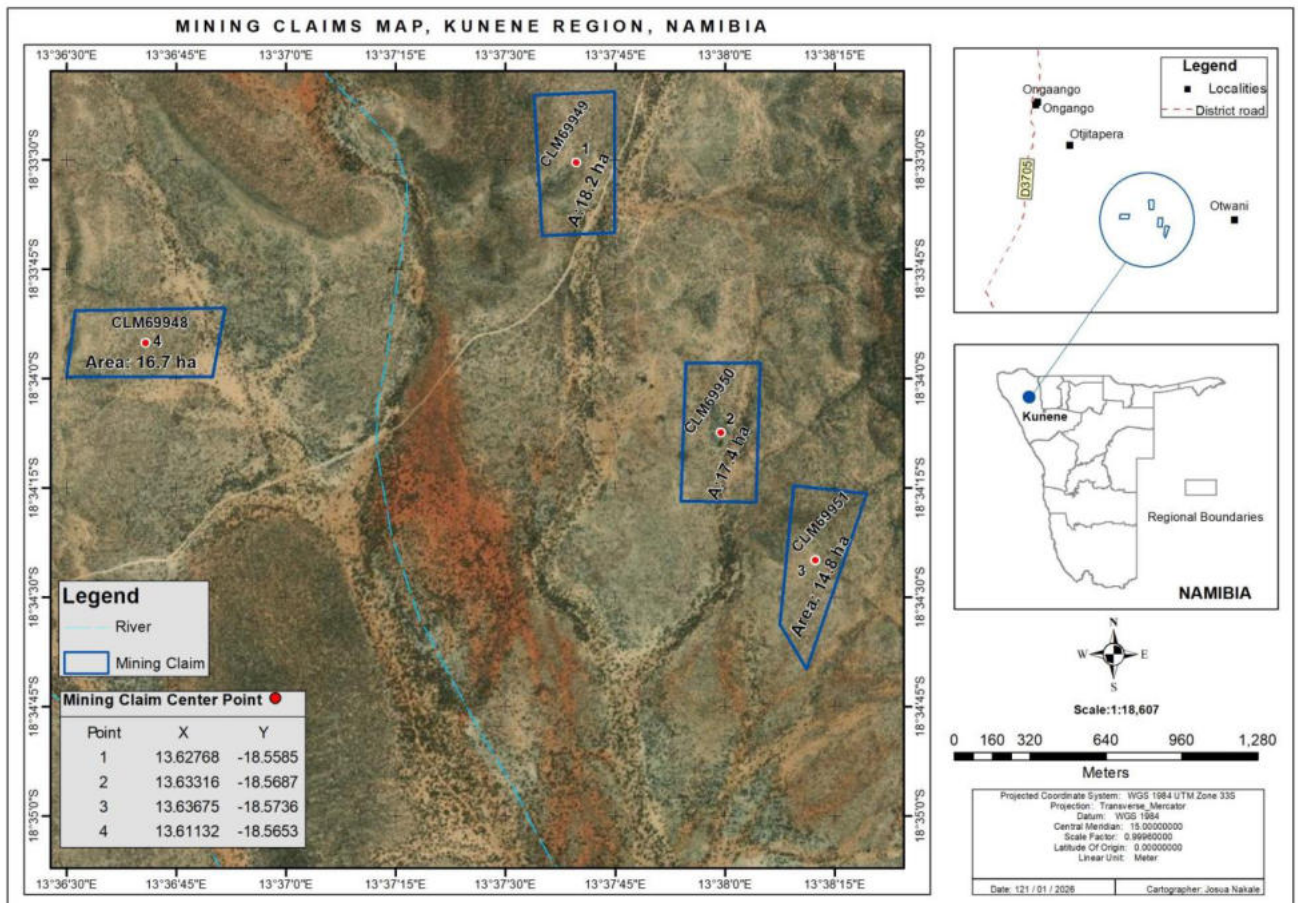


Figure 1: Locality map of Mining Claims; 69948, 69949, 69950 and 69951 at Otvani Village, Opuwo Rural Constituency, Kunene Region.

PROJECT COMPONENTS

The proposed project involves conducting an Environmental Impact Assessment for the establishment of mining activities targeting semi-precious and base and rare metals. Mining operations are expected to utilise conventional mining techniques appropriate for the small-scale mining to extract the copper ore and associated minerals such as silver.

The proposed project may include:

- Mineral extraction and handling;
- Temporary storage of materials;
- Transportation of minerals to off-site processing or sale locations.

The project is anticipated to contribute to local employment opportunities and economic activity within Otvani Village and the broader Opuwo Rural Constituency. The exact scale, operational footprint, and project duration will be assessed and refined during the Environmental Assessment process.

THE NATURAL ENVIRONMENT

The proposed area for the project falls within the mopane savanna with an average temperature of 20-22 degree Celsius and an average rainfall of 300-350 mm (Mendelsohn *et al* 2002). The area is characterized by the trees and shrub savanna, dominated by *Colophospermum mopane*, while *Catophractes alexandri*, *Terminalia prunioides*, *Combretum apiculatum*, *Ximenia americana*, *Dichrostachys cinerea*, *Grewia flavescens*, *Acacia hebeclada*, *Boscia albitrunca*, *Zizphus mucronata*, *Rhigozum brevispinosum*, *Commiphora glaucescens*, *Commiphora glandulosa* and other numerous *Commiphora* species are conspicuous in the general area. The landscape includes ephemeral drainage systems and seasonal watercourses, which are ecologically important despite limited surface water availability. Wildlife species commonly associated with communal rangelands may occur, along with avifauna adapted to arid conditions. Rainfall is low and variable, typically ranging between 200–350 mm per annum, with frequent droughts. Soils are generally shallow and susceptible to erosion if disturbed without appropriate management. A detailed environmental baseline assessment will be undertaken as part of the Environmental Impact Assessment and reported in the Draft Scoping Environmental Report.

Environmental Assessment Process

- Identification of potential environmental, social, and economic risks
- Identification of appropriate mitigation and management measures
- Preparation of a Draft Scoping Environmental Report (DSER) and Environmental Management Plan (EMP)
- Public review of the DSER and EMP
- Finalisation of the DSER and EMP and submission to MEFT
- Review and decision by the Environmental Commissioner
- Communication of the decision to all registered I&APs
- Provision of opportunities to appeal in accordance with the law.

Potential impacts identified at a preliminary level include:

- Impacts on biodiversity (flora and fauna)
- Impacts on biodiversity and habitats;
- Impacts on surface and groundwater resources;

- Soil disturbance, erosion, and land degradation;
- Waste generation and management;
- Traffic and access impacts;
- Visual impacts and changes to sense of place;
- Impacts on heritage and archaeological resources;
- Risks associated with climate variability and change.

Detailed Consultation Process

The Environmental Assessment process includes a structured public consultation programme designed to engage all Interested and Affected Parties (I&APs) and relevant stakeholders who may have an interest in, or may be affected by, the proposed mining activities.

As part of this process, information relating to the proposed project and the Environmental Assessment will be made available to I&APs to support informed and meaningful participation. Comment and response forms will be distributed to registered I&APs to obtain views, concerns, and suggestions regarding the proposed project, as well as its potential environmental, social, and economic impacts.

Participation in the consultation process provides I&APs with the opportunity to:

- Obtain information about the proposed mining project and the Environmental Assessment process;
- Raise environmental, social, economic, or cultural concerns related to the project;
- Contribute to the identification of potential impacts and the development of appropriate mitigation and management measures.

How to Participate

Interested and Affected Parties may become involved in the Environmental Assessment process by:

- Registering as an I&AP in order to be included on the project stakeholder register;
- Submitting comments, questions, or concerns in writing using the circulated comment and response forms;
- Attending and participating in scheduled public consultation meetings.

Public Participation Meeting

A public consultation meeting has been scheduled as follows, and all registered I&APs and interested stakeholders are encouraged to attend:

- **Venue:** Community Meeting Place, Oturangi Village

- **Date:** 27 January 2026
- **Time:** 14h00

All Interested and Affected Parties are encouraged to submit their comments and suggestions regarding the proposed project within the stipulated consultation period on or before 12 February 2025. Additional information and guidance on participation will be provided upon request.

Registration and Comments

Participant Name:	Organization/Affiliations:
Position:	Telephone:
Fax:	E-Mail:

Postal Address:
Comments/Suggestions and Questions:

Please fill in the particulars and return the completed document to be registered as an Interested & Affected Parties (I&AP) to:

EnvironClim Consulting Services

Mobile: **+264 815955643**

E-Mail: environclim@gmail.com

