



CC/2024/07232

BACKGROUND INFORMATION DOCUMENT (BID)

ENVIRONMENTAL AND SOCIAL IMPACT ASSESSMENT

FOR

THE PROPOSED PROSPECTING AND EXPLORATION ACTIVITIES ON EXCLUSIVE PROSPECTING LICENSE (EPL) NO. 10464 LOCATED NORTHWEST OF FRANSPONTEIN IN THE KUNENE REGION

PROPONENT: MELVIN GAWESEB

**PREPARED BY: SAVANNAH ENVIRONMENTAL CONSULTANT SERVICES
(ENVIRONMENTAL ASSESSMENT PRACTITIONER / CONSULTANT)**

December 2025

1 INTRODUCTION

Melvin Gaweseb (hereto referred to as the Proponent in this document) have applied to carry out the prospecting and exploration activities on the Exclusive Prospecting License (EPL) No. 10464. This EPL is located Northwest of Fransfontein in the Kunene region, Namibia. The EPL covers an area of 3 865.0224 hectares as shown in **figure 1**. The proponent is interested in doing prospecting and exploration activities on commodities such as Base & Rare metals, Dimension Stones, Semi-Precious Stones Nuclear Fuel Minerals, Industrial Minerals and Precious Metals. The EPL covers (overlies) farms such as Nantis , farm No. 679, Heuwels farm and Spitskop farm No. 678 .The EPL fully overlies within //Huab conservancy as shown in **Figure 2**

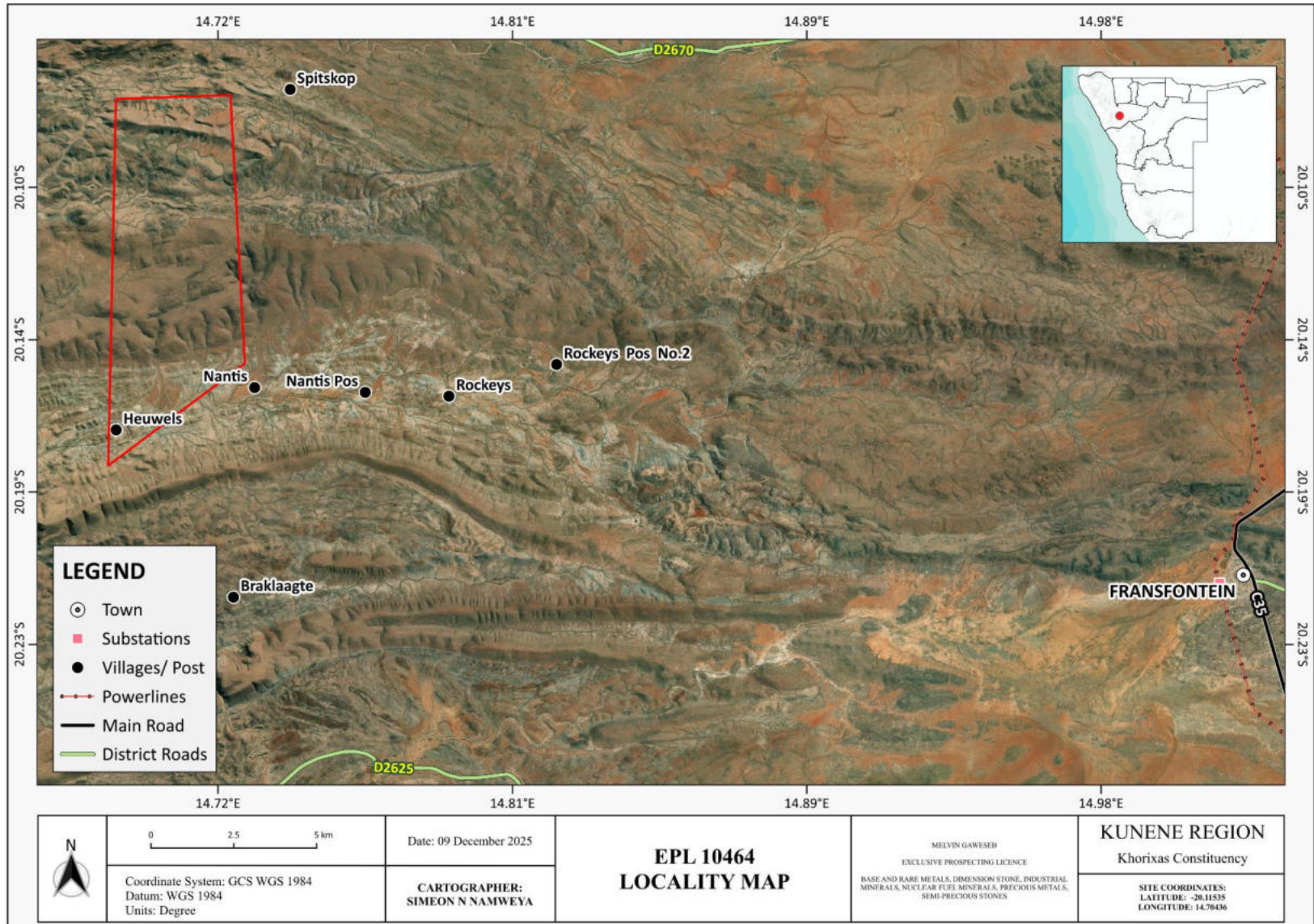


Figure 1 the locality map of the proposed EPL

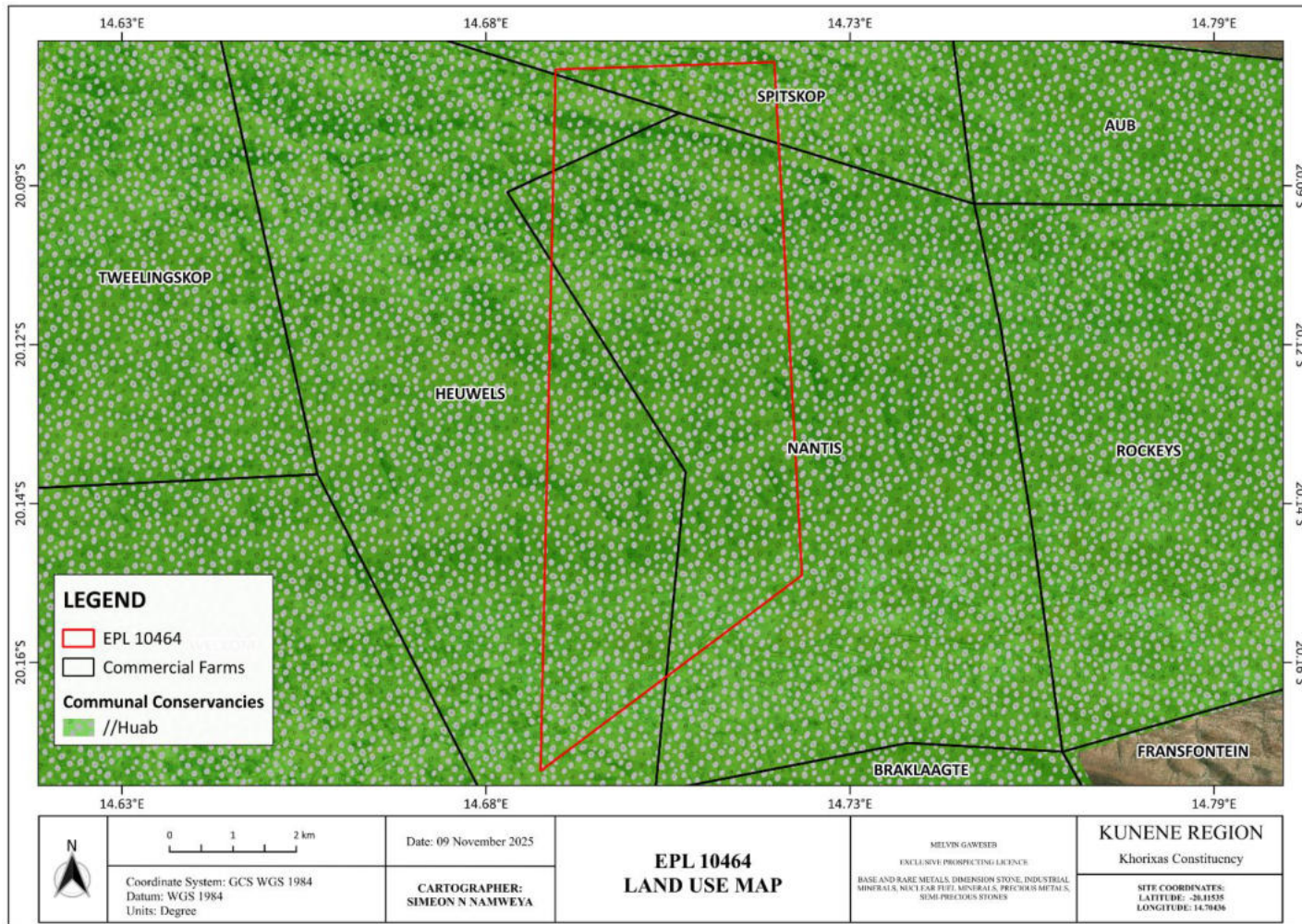


Figure 2 The land use map around the proposed site

2. Need for an Environmental Impact Assessment (EIA) Study

The proposed development and its associated activities are among the listed activities that cannot be implemented without an Environmental Clearance Certificate (ECC) being obtained from the Environmental Commissioner as per the Environmental Management Act (EMA) No. 7 of (2007) and its Environmental Impact Assessment (EIA) Regulations (GG No. 4878 GN No. 30) of 2012, thus, they require an EIA Study to be conducted before commencement.

. The relevant activities listed as per EIA regulations are as follows:

- *3.1 The construction of facilities for any process or activities which requires a license, right of other forms of authorization, and the renewal of a license, right or other form of authorization, in terms of the Minerals (Prospecting and Mining Act, 1992).*
- *3.2 other forms of mining or extraction of any natural resources whether regulated by law or not.*
- *3.3 Resource extraction, manipulation, conservation and related activities.*

Subsequently, to comply with the EMA and its Regulations and ensure environmental management and sustainability, the Proponent appointed Savannah Environmental Consultant Services, an Independent Environmental consultant to apply for the ECC and compile an Environmental Management Plan as well as the Environmental Scoping Report (ESR) for the proposed activities. The ECC application is submitted to and registered with the Ministry of Environment, Forestry and Tourism (MEFT).

Once the ECC is issued by the Environmental Commissioner, the Proponent will plan for the activities and thereafter commence with its operations.

3. The Purpose of this Document

It should be noted that this BID is not an EIA Report, but a non-technical summary of the EIA process, but used to:

- Share first-hand summarized information on the proposed project activities.
- Provide public guidance and a basis for their participation from the beginning of the EIA process register as interested and affected parties and raise issues/concerns.

- Register the ECC application on the EIA Portal

4. PROJECT DESCRIPTION

The proposed prospecting and exploration operation is anticipated to run for approximately three (± 3) years and will involve a combination of non-invasive and invasive prospecting and exploration activities. These activities will be implemented in two primary phases:

4.1 Project Phases

- Phase 1: Non-Invasive Techniques (Prospecting)
 - Geological mapping
 - Geophysical/Geochemical Surveys
 - Review of existing geological data and maps
 - Field evaluation and surface sampling
- Phase 2: Invasive Techniques (detailed exploration)
 - Soil sampling
 - Trenching
 - Drilling

Once the target areas have been selected and verified under the prospecting phase, detailed exploration works will follow.

4.2 Human Resources, Services, and Infrastructure

Workforce

- The project will employ approximately 10–15 workers, consisting of:
 - General laborers
 - Skilled and semi-skilled personnel

- Security staff
- Workers will be accommodated on-site in a temporary camp setup.
- Office facilities will be housed in converted shipping containers.

Water Supply

- Approximately 3,500 litres of water per month will be required, primarily for:
 - Domestic use (drinking, cooking, sanitation)
 - Occasional equipment cleaning
 - During detailed exploration processes.

Power Supply

- No permanent electrical infrastructure is required.
- All power needs will be met through diesel-powered generators.
 - Estimated monthly fuel consumption:
 - 600 litres of diesel
 - 200 litres of petrol

The proponent will be using existing roads to access the site , but given the topography of the area, new tracks are likely to be created to access the site for exploration but minimal.

- **Waste Management and Health and Safety**
 - **Sewage Management:**

Mobile chemical ablution facilities will be provided on-site. Sewage waste will be managed and disposed of in accordance with the manufacturer's instructions to ensure compliance with health and environmental standards.
 - **Solid Waste Management:**

Adequate waste bins and containers will be made available at all exploration sites and campsites. Collected waste will be stored safely and transported for disposal at the nearest approved waste management facility.

- **Hazardous Waste Management:**

Hazardous waste, including used fuel and oils, will be carefully stored in standardized, leak-proof containers. These will be transported to and disposed of at an approved hazardous waste management facility located in the nearest town (Khorixas).

Health and Safety Measures

- All project personnel will be provided with adequate and appropriate Personal Protective Equipment (PPE).
- A minimum of two well-stocked first aid kits will be available on-site at all times.
- Fire extinguishers will be readily available in vehicles, at exploration sites, and at campsites to mitigate risks of accidental fire outbreaks.
 - Equipment's
- The following equipment and vehicles will be utilized:
 - 4x4 vehicles
 - Drilling support truck
 - Excavator/front-end loader
 - Dozer
 - Air compressor
 - Generator for power supply
 - Drilling fluids stored in manufacturer-approved container 2 x bakkies (pickup trucks)

5 POTENTIAL IMPACTS

Impact Category	Description
Positive Impacts	
Employment Creation	Generation of job opportunities for local communities.
Economic Development	Stimulation of local and regional economies.
Investment Opportunities	Attraction of new investments and infrastructure

	development.
Local Business Support	Increased procurement from nearby suppliers and service providers.
Negative Impacts	
Disturbance to Pastoral Systems	Disruption of traditional livestock grazing or farming areas.
Biodiversity Loss	Habitat disturbance affecting of flora and fauna.
Soil and Water Impact	Risk of soil erosion, sedimentation, or contamination of water resources.
Air Quality (Dust)	Dust generation from clearing, transport, or blasting activities.
Occupational Health & Safety	Exposure to exploration hazards and poor safety measures for workers.
Traffic and Infrastructure	Damage to local roads, increased risk of accidents due to heavy vehicle use.
Noise and Vibrations	Nuisance to residents and wildlife from exploration operations.
Waste Management Issues	Potential pollution due to improper disposal of solid or hazardous waste.
Cultural Heritage Impact	Risk of damaging archaeological or culturally sensitive sites.
Social Conflicts	Land use disputes, noise complaints, or community unrest.
Tourism	Disturbance to the land visual and scenic of the area

Further potential impacts will be identified as the ESA process progresses i.e., upon consulting with the public/ stakeholders and locals. All the impacts and concerns/comments will be incorporated and addressed in the ESA Report and mitigated in the Draft EMP.

Interested and affected parties are hereby invited to register in terms of the assessment process to give input, comments, and invited for the public consultation meeting at a later stage. Registration requests and comments should be forwarded to Savannah Environmental Consultants Services CC on or before the 6 February 2026 on the details below ;

Email: info@savannah.com.na
Cell: 0816600322/ 0818128677