

Tjikunda Katjina Kulunga

(BID): MC No. 73444



Physical Address: 3rd Floor, Stone Square, Robert mugabe, Windhoek

Postal Address: PO Box 997154 Maerua Mall, Windhoek

Telephone: +264 (0) 61 259 530

Fax2email: +264 (0) 886 560 836

Email: info@edsnamibia.com

Web: www.edsnamibia.com

BACKGROUND INFORMATION DOCUMENT (BID)

Environmental Scoping Assessment (ESA) for the Proposed Small-Scale Mining Activities on Mining Claims (MC) No. 73444 Located northwest of Okangwati in the Kunene Region, Namibia

Proponent:

Tjikunda Katjina Kulunga

Environmental Consultant:

Excel Dynamic Solutions (Pty) Ltd

1 INTRODUCTION

Tjikunda Katjina Kulunga (herein referred to as The Proponent), has applied to the Ministry of Industries, Mines and Energy (MIME) to be granted rights to conduct the small-scale mining activities on Mining Claims (MCs) No. 73444. However, the approval of the MCs is subject to a granted Environmental Clearance Certificate (ECC). The MC measuring a total area of approximately 16.6843 hectares (ha) is located about 26 km, northwest of Opuwo in the Kunene region as shown in **Figure 1**. The MC (center coordinates: -17.3411, 13.1019) lies within Epupa conservancy as shown in **Figure 2**. The Proponent applied to conduct small-scale mining activities of **Base and Rare metals** as commodities of interest.

All mining-related activities are among the listed activities that may not be undertaken without an ECC under the Environmental Management Act (EMA) (2007) and its 2012 Environmental Impact Assessment (EIA) Regulations. The relevant listed activities as per EIA regulations are:

- *3.1 The construction of facilities for any process or activities which requires a license, right of other forms of authorization, and the renewal of a license, right or other forms of authorization, in terms of the Minerals (Prospecting and Mining Act, 1992).*
- *3.2 other forms of mining or extraction of any natural resources whether regulated by law or not.*
- *3.3 Resource extraction, manipulation, conservation, and related activities.*

To fulfill the legal requirements, the Proponent has appointed Excel Dynamic Solutions (Pty) Ltd (Environmental Consultant), to conduct the required Environmental and Social Impact Assessment (ESIA) process and submit the ECC application to the Department of Environmental Affairs and Forestry (DEAF) at the Ministry of Environment, Forestry & Tourism (MEFT).

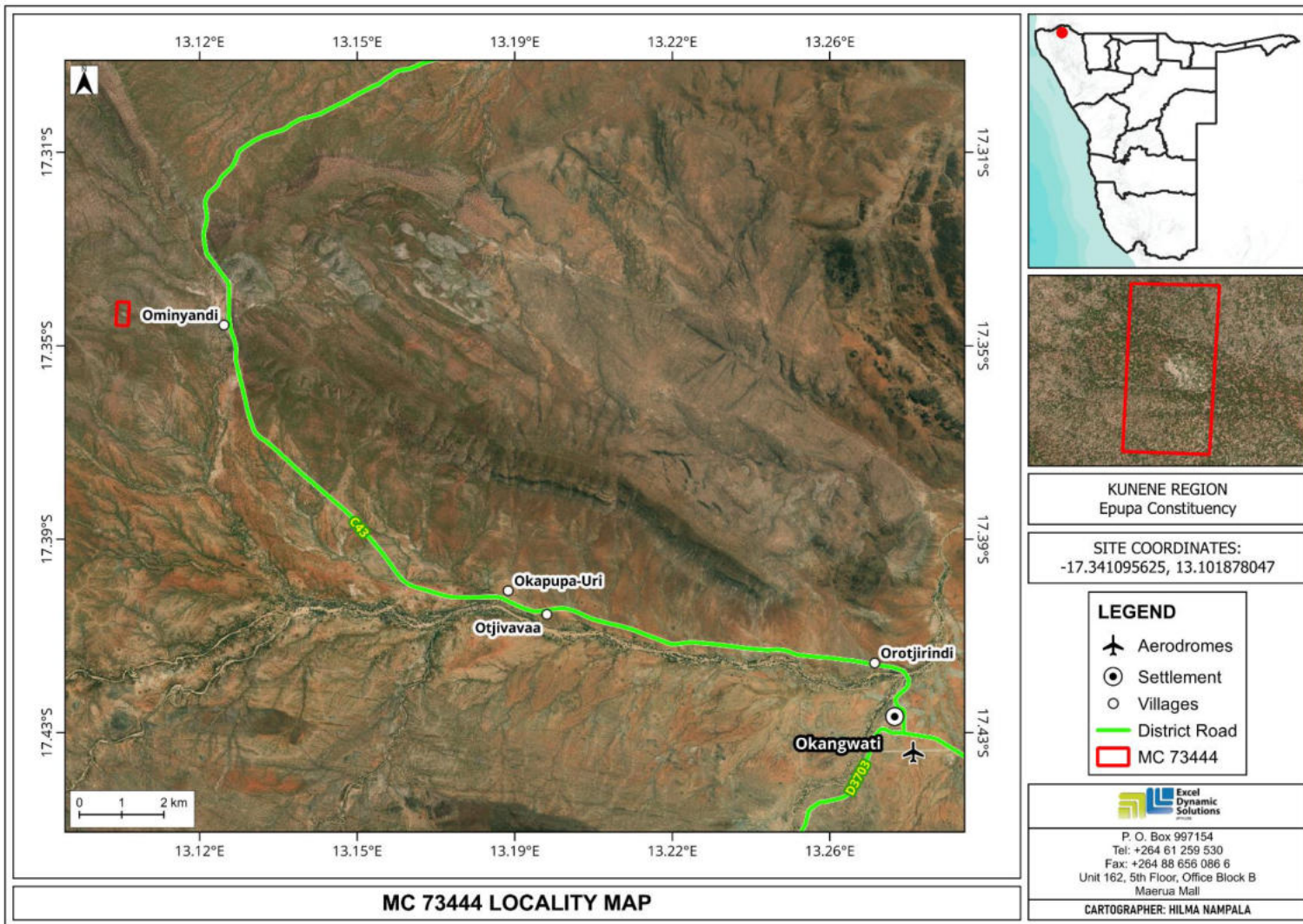


Figure 1: Locality map of MCs No. 73444.

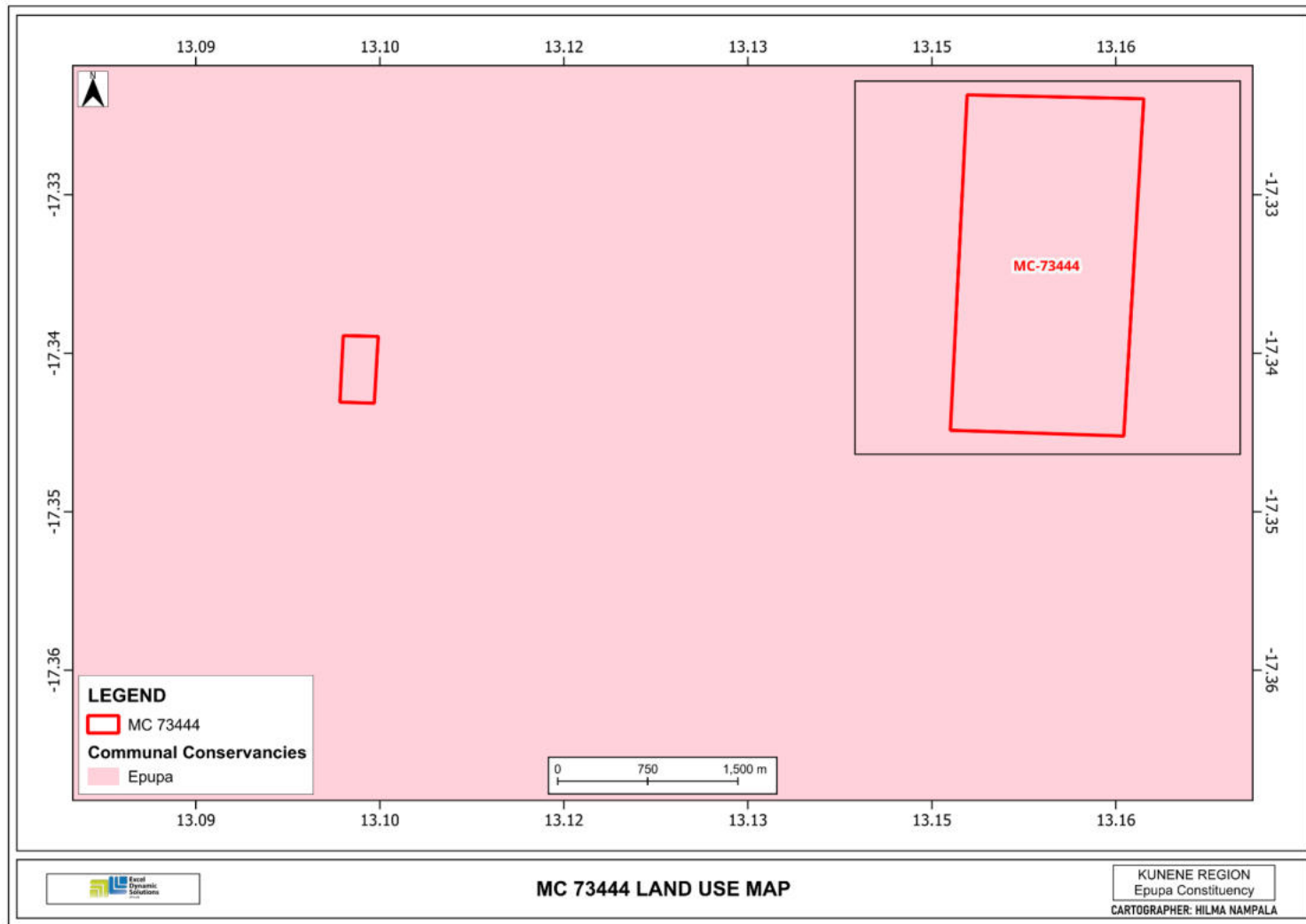


Figure 2: The land use around the project.

2. PURPOSE OF THIS DOCUMENT

It should be noted that the Background Information Document (BID) is a non-technical document of the ESIA (**not an ESIA Report**). The BID aims to briefly introduce the proposed project and related activities to Interested and Affected Parties (I&APs), and provide them with an opportunity to raise issues, and concerns and submit comments about the proposed project.

The planned small-scale mining activities will only commence once the Proponent has been issued with an ECC and obtained all required permits.

3 PROJECT DESCRIPTION

3.1 Project Activities

The proposed mining activities (methods) are divided into the following categories:

Phase 1: Non-invasive techniques – This phase includes Geological mapping, reviewing of existing geological maps, field evaluation and sampling.

Phase 2: Invasive techniques – Trenching and pitting, open pit mining using excavators and jack hammers.

3.2 Human Resources, Services, and infrastructure

The following services and infrastructure as outlined below will be required for the project activities:

Human Resources: Around 5-10 people will be employed for the project, and will be either accommodated in Ominyandi settlement or tented camps on a farm upon reaching agreement with the landowners.

Water Supply: Around 2500 liters of water per month will be required for the activities.

Fuel Supply (machinery and equipment): Diesel will be used for machinery and equipment, and power generator.

Accessibility: The MCs are accessible via informal tracks that divert from the C43 route from Okangwati (**refer to Figure 1**).

3.3. Waste Management

Sewage: Mobile chemical ablution facilities will be provided on-site. Sewage waste will be disposed of appropriately as per instructions of the facility manufacturer.

Solid waste: Sufficient waste bins (containers) will be made available at mining sites and campsites for waste storage and later disposal at the nearest approved waste facility.

Hazardous waste: The waste fuel/oils will be carefully stored in a standardized container for disposal at an approved hazardous waste management facility in the nearest Town (Okangwati).

Health and Safety: Adequate and appropriate Personal Protective Equipment (PPE) will be provided to project personnel. A minimum of two first aid kits will be readily available onsite.

Potential Accidental Fire Outbreaks: Fire extinguishers will be readily available in vehicles, at the sites, and campsites.

Project Equipment, Material, Machinery, and Vehicles: Two (2) bakkies (pickup trucks), generators, an excavator, and a jack hammer are required for these proposed mining claims.

4 ENVIRONMENTAL ASSESSMENT

This EA process is conducted in accordance with the provisions of the EMA (Act No 7 of 2007) and its 2012 EIA Regulations. The primary objective of the EA is to identify potential negative impacts associated with the project and assess them. Practical and effective mitigation measures will be recommended for implementation.

The main objectives of this EA are to:

- Identify potential impacts associated with the proposed Activity.
- Inform I&APs and relevant authorities about the project and provide them with an opportunity to participate during the EA process.
- Assess the significance of issues and concerns raised.
- Compile a report addressing all identified issues and potential impacts.
- Compile a Draft Environmental Management Plan (EMP) which includes impacts management and mitigation measures.

5.1 Pre-Identified Potential Impacts

The following potential impacts have been identified:

5.1.1 Positive:

- Socio-economic development: employment creation and skills transfer.
- Investment opportunities or infrastructure-related development benefits.
- Produce a trained workforce and small businesses in the area.
- Boosting local economic and regional economic development.
- Increased support for local businesses through the procurement of locally available goods and services.

5.1.2 Negative Impacts:

- Disturbance of existing commercial grazing areas,
- Physical land/soil disturbance and prone to erosion
- Impact on fauna and flora (habitat disturbance and poaching).
- Water resources (over-abstraction of water) and soil pollution.
- Air quality issue due to dust generation.
- Occupational and community health and safety risks/hazards
- Vehicular traffic safety and services infrastructure (local roads).
- Vibrations and noise associated with drilling activities.
- Environmental pollution from poor waste management,
- Archaeological or cultural heritage impact
- Potential social nuisance and land use conflicts

Other potential impacts may be identified as the EA process progresses. All impacts and public concerns and comments will be incorporated and addressed in the Environmental Report and a draft EMP.

5.2 Public Consultation Registration

Public consultation is an important part of the EA process. During the consultation process, I&APs are allowed to raise any issues or concerns pertaining to the project activities.

To comment or receive further information on the project, **please register with Excel Dynamic Solutions (Pty) Ltd** (contact details herein) as an Interested and Affected Party (I&AP).

Furthermore, the Consultation Meeting details will be communicated with registered I&APs.

For comments and/or further information requests, please contact EDS Consultant on the details provided below:

Contact: Mr. Wilbard Angula
Environmental Assessment Consultant
Excel Dynamic Solutions (Pty) Ltd
Tel: +264(0)61 259 530 Email: public@edsnamibia.com
wangula@edsnamibia.com