

LOCALITY, GPS, LEGEND for WHITE SANDS LODGE, KAVANGO EAST REGION
APP 251229-006842

<u>WHITE SANDS LODGE</u>	<u>APP 251229-006842</u>
KYARAMACAN ASSOCIATION, BWABWATA NATIONAL PARK MULTIPLE-USE AREA, KAVANGO EAST REGION	

LOCALITY, LAYOUT and GPS CO-ORDINATES

Rovejema Lodge and Camping Group (Pty) LTD t/a as White Sands Lodge at Popa Falls, Kavango East Region, was established (construction phase) in 2018 (Fig. 1). This is a joint venture with the Kyaramacan Association (KA). The KA was issued with a 20-year tourism concession by MEFT in 2018. The lodge and camp officially opened its doors to tourists in the second half of 2019. The lodge and camp are situated on the northern banks of the Kavango River within the Multiple-Use Area of Bwabwata National Park west. The Proponent operates and provides a 3-star hospitality destination to predominantly the European tourist market and, for those who wish to camp, 8 campsites along the Kavango River have been established.

Coordinates for **White Sands Lodge** (gate entrance) and a carbon footprint expressed in ha, are as follows:

NAME	LATITUDE (South)	LONGITUDE (East)	AREA (ha)
White Sands Lodge	18.10833	21.58347	16



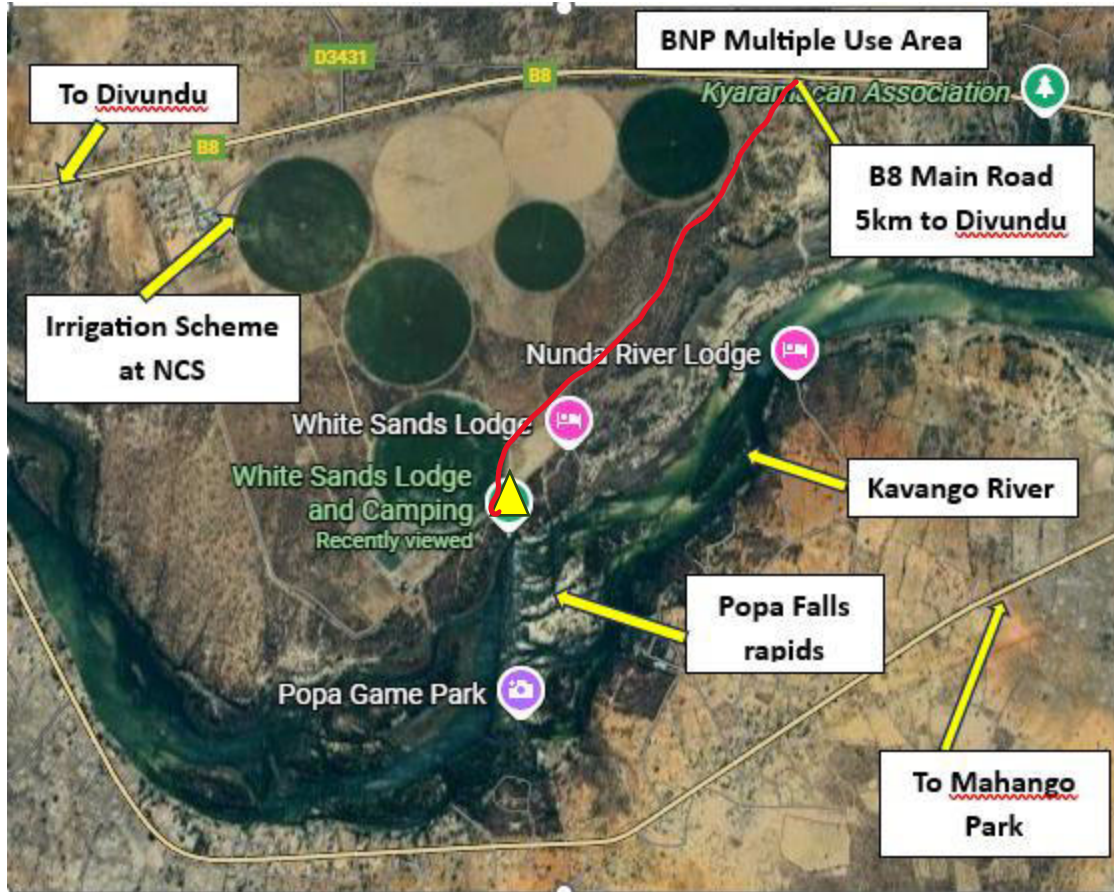


Figure 1: The location of Whites Sands Lodge (▲), north of the Kavango River near Divundu (earth google maps) (red line = road to White Sands Lodge)

BNP = Bwabwata National Park; NCS = Namibia Correctional Services

White Sands Lodge

White Sands Lodge is being referred to as the only lodge with chalets and campsites facing the Popa Falls rapids (Fig. 2) and is located only 2,2km from the B8 tarred road to Divundu/Kongola. Along the northern banks of the Kavango River, crocodile and at times hippo can be seen. The lodge offers 5 chalets, 8 luxury rooms and 8 exclusive campsites with stunning views across the Kavango River.

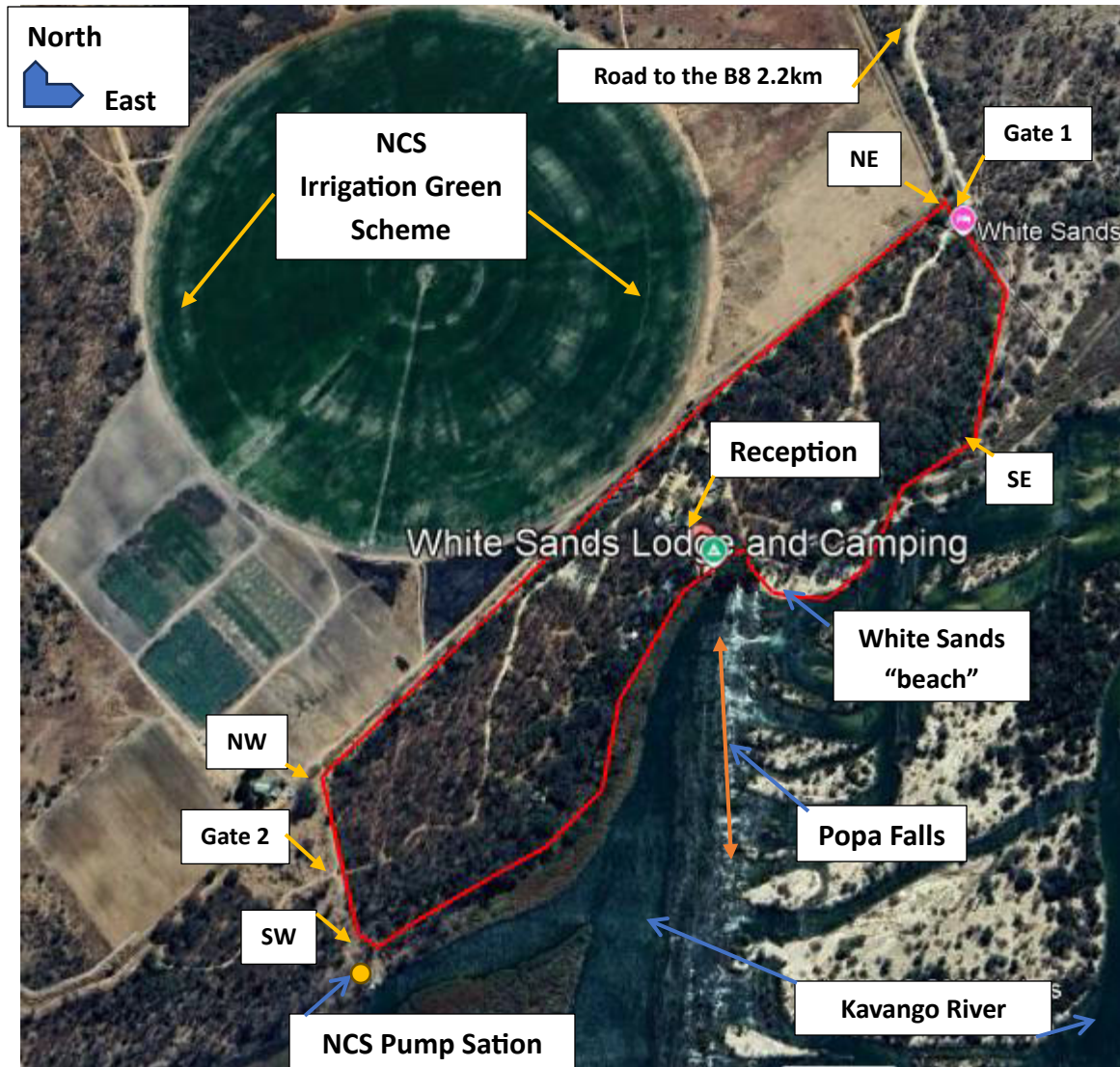


Figure 2: Satellite image indicating the location of White Sands Lodge (red block), on a 16ha raised landscape on the northern banks of the Kavango River (google maps).

White Sands Lodge have substantial infrastructure which blends into the environment and includes: a swimming pool, reception, impressive guard house at gate entrance, spacious workshop, restaurant with a spacious deck overlooking the Popa Falls rapids, bar and kitchen, an office and a reception. A more detailed layout of *White Sands Lodge* is presented in the EMP.

**LOCALITY, GPS, LEGEND for WHITE SANDS LODGE, KAVANGO EAST REGION
APP 251229-006842**

Table 1 indicates the GPS positions of the main infrastructure at WSL, including the 4 perimeter corner posts and Popa Falls rapids.

**Table 1: GPS (in degree decimals) of
White Sands Lodge boundaries and layout along the northern banks of the Kavango River**

No.	POSITION	COORDINATES (GPS)	COORDINATES (in dd)
1	Turn off at B8	S Lat 18° 05' 38" and E Long 21° 35' 41"	S 18.18888 and E 21.69722
2	Gate entrance	S Lat 18° 06' 30" and E Long 21° 35' 05"	S 18.18333 and E 21.59722
3	Reception	S Lat 18° 06' 39" and E Long 21° 34' 55"	S 18.20833 and E 21.71944
3	Restaurant and deck	S Lat 18° 06' 42" and E Long 21° 35' 00"	S 18.21677 and E 21.58333
4	Popa Falls rapids South	S Lat 18° 07' 06" and E Long 21° 34' 58"	S 18.13333 and E 21.72777
5	Popa Falls rapids North	S Lat 18° 06' 44" and E Long 21° 34' 57"	S 18.22222 and E 21.72500
6	White Sands beach	S Lat 18° 06' 45" and E Long 21° 34' 58"	S 18.22500 and E 21.72777
6	North-west boundary (corner)	S Lat 18° 06' 50" and E Long 21° 34' 42"	S 18.23888 and E 21.68333
7	South-west boundary (corner)	S Lat 18° 06' 57" and E Long 21° 34' 44"	S 18.25833 and E 21.68888
8	North-east boundary (corner)	S Lat 18° 06' 29" and E Long 21° 35' 05"	S 18.18055 and E 21.59722
9	South-east boundary (corner)	S Lat 18° 06' 37" and E Long 21° 35' 10"	S 18.20277 and E 21.61111

dd = degree decimal