

LOCALITY, GPS, LEGEND for CAMP KWANDO, ZAMBEZI REGION
APP 251222-006838

LOSANGE LODGES (Pty)LTD t/a BUSH CAMP by CAMP KWANDO
APP 251222-006838

MAYUNI CONSERVANCY, ZAMBEZI REGION

LOCALITY, LAYOUT, INFRASTRUCTURE and GPS CO-ORDINATES

Background: Losange Lodges t/a Camp Kwando, was one of the first lodges in the Zambezi Region to open its doors to tourists in 1993. It is situated on the eastern banks of the Kwando River wetland ecosystem north of Mudumu National Park. The Proponent operates and provides a rustic hospitality destination to predominantly the European tourist market at Camp Kwando on the C49, ca. 35km, south of Kongola.

Following the success of Camp Kwando which operates 14 chalets and 4 tree houses, management decided to close all its campsites at Camp Kwando as of 2019 and to focus only on B&B. After a Joint Venture agreement with the Mayuni Conservancy and the MAFWE TA, a new exclusive campsite was established by Losange Lodges in the Mayuni Conservancy near Kongola in 2019. This campsite is called **Bush Camp** which is owned and managed by Camp Kwando (Losange Lodges Pty Ltd). Prior to this “JV agreement” this run down campsite was referred to as **Mazambala Camp**.

Location

- Bush Camp is located about 7km west of Kongola (**Fig. 1**) under a canopy of palms, riverine forest and woodland trees. Bush Camp is situated on a side channel of the Kwando River as it meanders south into the Linyanti River.

NAME	LATITUDE (South)	LONGITUDE (East)	AREA (ha)
BUSH CAMP	17.85000	23.46111	Use 6ha of 43.3ha allocated

The area allocated to Losange Lodges (Pty) LTD is 43.3ha of which Bush Camp currently only makes use of 6ha (**Table 1 and Fig. 2**). Google earth map of 2026 was used to delineate the 43.3 ha and the 6ha currently utilized. Further expansions are envisaged, however, not in the mediate.



Figure 1: The location of Bush Camp (▲), east of the banks of the Kwando River (google maps).
BNP = Bwabwata National Park

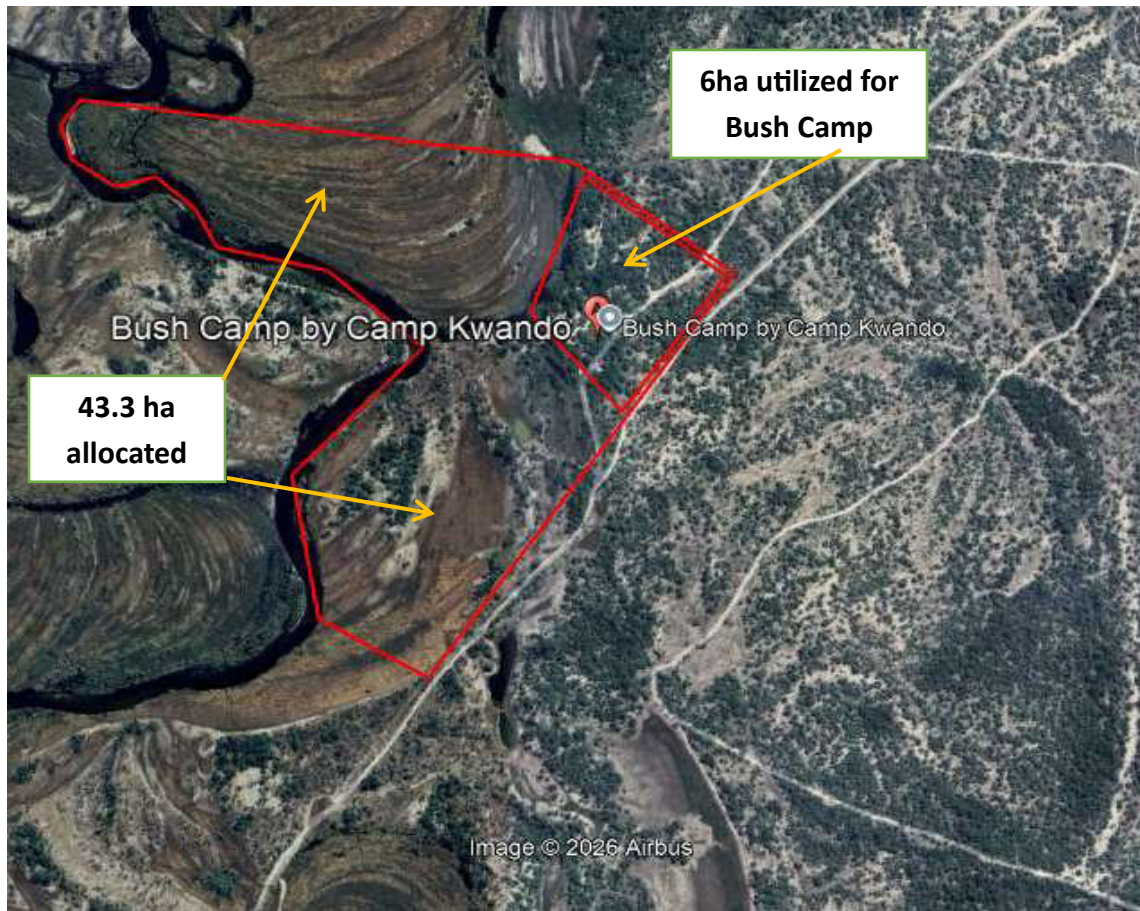


Figure 2: Satellite image of land allocated on lease agreement to Losange Lodges (Pty) LTD (in RED), for Bush Camp.

Layout and infrastructure (Fig. 3)

In summary, Bush Camp includes:

- 4 x exclusive campsites
- Reception
- “Mad Max Bar” with a splash pool and deck
- Staff and security quarters
- Store facilities
- Workshop/carport
- Borehole

Bush Camp offers only 4 exclusive private campsites. Each campsite has its own braai facility under a thatched roof. Included at each campsite is an ablution block (separate toilet and shower) with braai facilities and electricity under a thatched roof.

Bush Camp

- The 4 campsites (**Fig. 3**) are positioned on elevated vegetated land (967m above sea-level), populated with palm trees, jackal-berry, mangosteen, combretum and terminalia trees, and surrounded by sedges and reeds along the riverbanks. Bush Camp can be reached by vehicle on the B8 west from Kongola and it is well signed to guide guests to their destination.
-



Figure 3: Satellite image indicating the location of Bush Camp (red block), with 4 exclusive campsites on a ca. 6ha raised vegetated landscape east of the Kwando River (google maps).

▲ = Campsite No. 1 to 4

LOCALITY, GPS, LEGEND for CAMP KWANDO, ZAMBEZI REGION
APP 251222-006838

The **basic infrastructure** in place blends into the environment and includes: 4 campsites, a deck with a swimming pool, reception, staff quarters, borehole with 2 raised tanks, storeroom and carport. For a more detailed layout of ***Bush Camp*** refer to Fig. 2 and for the coordinates to Table 1.

**Table 1: GPS (in degree and decimals) of
 Bush Camp layout of campsites and main infrastructure along the eastern banks
 of the Kwando River**

No.	POSITION	COORDINATES (GPS)	COORDINATES (in dd)
1	Turn-off at B8	S Lat 17° 40' 18" and E Long 23° 21' 53"	S 17.71666 and E 23.49722
2	Entrance	S Lat 17° 48' 28" and E Long 23° 20' 54"	S 17.85000 and E 23.48333
3	Reception	S Lat 17° 48' 34" and E Long 23° 20' 46"	S 17.89444 and E 23.46111
3	Mad Max deck with pool	S Lat 17° 48' 34" and E Long 23° 20' 42"	S 17.89444 and E 23.45000
4	Staff quarters	S Lat 17° 48' 36" and E Long 23° 20' 46"	S 17.90000 and E 23.46111
5	Borehole with holding tanks	S Lat 17° 48' 32" and E Long 23° 20' 46"	S 17.88888 and E 23.46111
6	Workshop	S Lat 17° 48' 31" and E Long 23° 20' 47"	S 17.88611 and E 23.46388
6	Campsite 1	S Lat 17° 48' 33" and E Long 23° 20' 44"	S 17.88888 and E 23.45555
7	Campsite 2	S Lat 17° 48' 32" and E Long 23° 20' 44"	S 17.25833 and E 23.45555
8	Campsite 3	S Lat 17° 48' 30" and E Long 23° 20' 46"	S 17.88333 and E 23.46111
9	Campsite 4	S Lat 17° 48' 28" and E Long 23° 20' 47"	S 17.87777 and E 23.46388