

PROPOSED EXPLORATION AND MINERAL PROSPECTING ACTIVITIES ON EPL 10848, 10849, 10850 IN OKAHANDJA & OMARURU DISTRICTS, OTJOZONDJUPA & ERONGO REGION

PROPOSER: CANCUN ENERGY CC

ENVIRONMENTAL IMPACT ASSESSMENT-NOV 2025

INTRODUCTION

Cancun Energy cc intends to carry out **Dimension Stone, Base and Rare Metals, Industrial Minerals, Precious Stones, Precious Metals and Nuclear Fuel Minerals** prospecting and exploration activities in an area covered by EPL 10848, 10849 and 10850 in Okahandja and Omaruru Districts, Otjozondjupa and Erongo Region. **EPL 10848** stretches in the following farms: **Farm Ovihakondua No. 32, Farm Otjombundya No. 33, Farm Otjiseмба No. 24, Farm Okanatjikuma No. 25 and Farm Felseneck No. 26**. The EPL covers a surface area of 24 246. 5608 hectares. **EPL 10849** stretches in the following farms: **Farm Otjikoto Sud No. 61 and Farm Otjimakuru No. 62**. With total surface area of 4928.9037. **EPL 10850** stretches in the following farm: **Farm Okatete No.68** with surface area of 9887. 6534 hectares. Prospecting, exploration and all mining-related activities are among the listed activities that may not be undertaken without an ECC under the Environmental Management Act (EMA) (2007) and its 2012 Environmental Impact Assessment (EIA) Regulations. The relevant listed activities as per EIA regulations are:

•**3.1** The construction of facilities for any process or activities which requires a license, right of other forms of authorization, and the renewal of a license, right or other forms of authorization, in terms of the Minerals (Prospecting and Mining Act, 1992). •**3.2** other forms of mining or extraction of any natural resources whether regulated by law or not. •**3.3** Resource extraction, manipulation, conservation, and related activities. The Proponent is, therefore, required to obtain an Environmental Clearance Certificate (ECC) before the commencement of exploration works on the EPL. To fulfill the legal requirements, the Proponent has appointed Junior Baiano Industrial Consultant (Environmental Consultants), to conduct the required Environmental Scoping Assessment (ESA) process and submit the ECC application to the Department of Environmental Affairs and Forestry (DEAF) at the Ministry of Environment, Forestry & Tourism (MEFT).

THE PUBLIC PARTICIPATION PROCESS

The Public Participation Process (PPP) is an integral part of the EIA process whereby it allows the public to obtain information about the proposed project, to view documentation, to provide input and voice any concerns concerning the project. The Public Participation Processes that will be undertaken will include consultation with the local authority, line ministries, government extension offices, owners of neighboring properties and other I&AP is living around the proposed area. During the meeting participants will be availed an opportunity to comment, ask questions and raise any concerns be it environmental or social regarding the proposed project. Comments will be recorded and considered in the Environmental Assessment report that will be submitted to the Ministry of Environment for review

AIMS & OBJECTIVES OF THIS EIA PROCESS

The aims of this EIA:

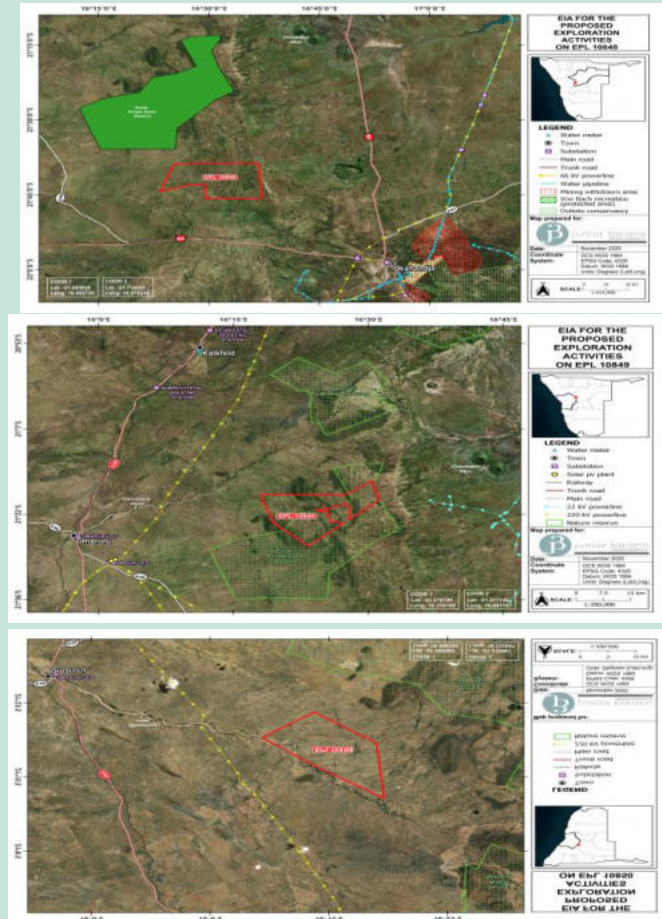
- To comply with Namibia's Environmental Assessment Policy, Environmental Management Act (No. 7 of 2007) with its 2012 EIA Regulations and;
- Consult all interested and affected parties such as local residents, town council and regional council to ensure that their inputs are taken into account;
- To assess the significance of issues and concerns raised;
- Review the legal and policy framework and its relevance to this project;
- Describe general and socio-economic environment of the project to determine impacts and suitability to the project site.
- Identify and assess impacts related to the continued operations.
- Compile an Assessment Report and Management Plan (EMP), which includes recommendations and methods to minimize the identified negative environmental impacts of the proposed project.
- To identify existing environmental conditions and associated environmental sensitivities within and adjacent to the project area that may potentially be affected, i.e. Environmental sensitivity and monitoring procedures.

PROJECT DESCRIPTION

The proposed activities entail prospecting and detailed exploration activities to delineate the mineral deposits. This is to determine whether the deposit for the target commodities is economically feasible (to advance to the resources development and mining phase).

Prospecting and exploration of minerals are the first components of any potential mining project. This is done to acquire the necessary data required for further decision-making and investment options.

Exploration activities are anticipated to last for about three years or sometimes longer (depending on the various factors such as turnaround between exploration data analysis and availability of funds between project phases, etc.).



ANTICIPATED PROJECT IMPACTS

Potential Impacts	Assessment to be Undertaken
Negative Impacts	
Land use Change (Aesthetic value)	baseline assessment
Impacts on fauna and Flora	JBIC EIA Team If there is need for specialist Assessment, the consultation process will Inform.
Impacts on surface and groundwater resources	JBIC EIA Team baseline assessment
Health and Safety hazards	JBIC EIA Team baseline assessment
Cumulative impacts of the project Operation	JBIC EIA Team baseline assessment
Positive Impacts	
Revenue generation	JBIC EIA Team baseline assessment
Mine development	JBIC EIA Team baseline assessment
Employment creation	JBIC EIA Team baseline assessment

HOW TO PARTICIPATE?

This Public Consultation process forms an important component of the Environmental Assessment process. It is defined in the EIA Regulations (2012), as a “process in which potential interested and affected parties are given an opportunity to comment on, or raise issues relevant to, specific matters” (S1).

Public Participation Process:

- **A continuous consultative engagement with the nearby farms period 17 Nov – 17 Dec 2025.**
- **Public meeting Details**
Venue: Omaruru Community Hall
Date: Friday, 28 Nov 2025
Time: 14h00pm

OUR CONTACT DETAILS.....

You can send all your comments and enquiries to the following:

Mr. Nghiyolwa, Fredrich
Tel: +264 (0) 81 147 2029
Email: JuniorB200581@gmail.com



Registration and Comments Form

**PROPOSED EXPLORATION AND MINERAL PROSPECTING ACTIVITIES ON EPL 10848,
10849 & 10850 OKAHANDJA & OMARURU DISTRICT, OTJOZONDJUPA & ERONGO
REGION, NAMIBIA**

KINDLY COMPLETE THIS FORM IN DETAIL AND RETURN TO:

Junior Baiano Industrial Consultants cc
PO Box 23537
Windhoek
Tel: 061 219 773
Cell: 0811472029
Email Address: JuniorB200581@gmail.com

Personal Details

Name & Surname.....
Postal Address..... Email
Town.....

What is your main area of interest regarding the proposed development?

.....
.....
.....
.....
.....

Do you have any points of concern or support regarding the proposed project? If "yes", please briefly list these in point format:

YES / NO

.....
.....
.....
.....

Should this project go ahead? If no please specify reasons below:

YES / NO

.....
.....
.....
.....