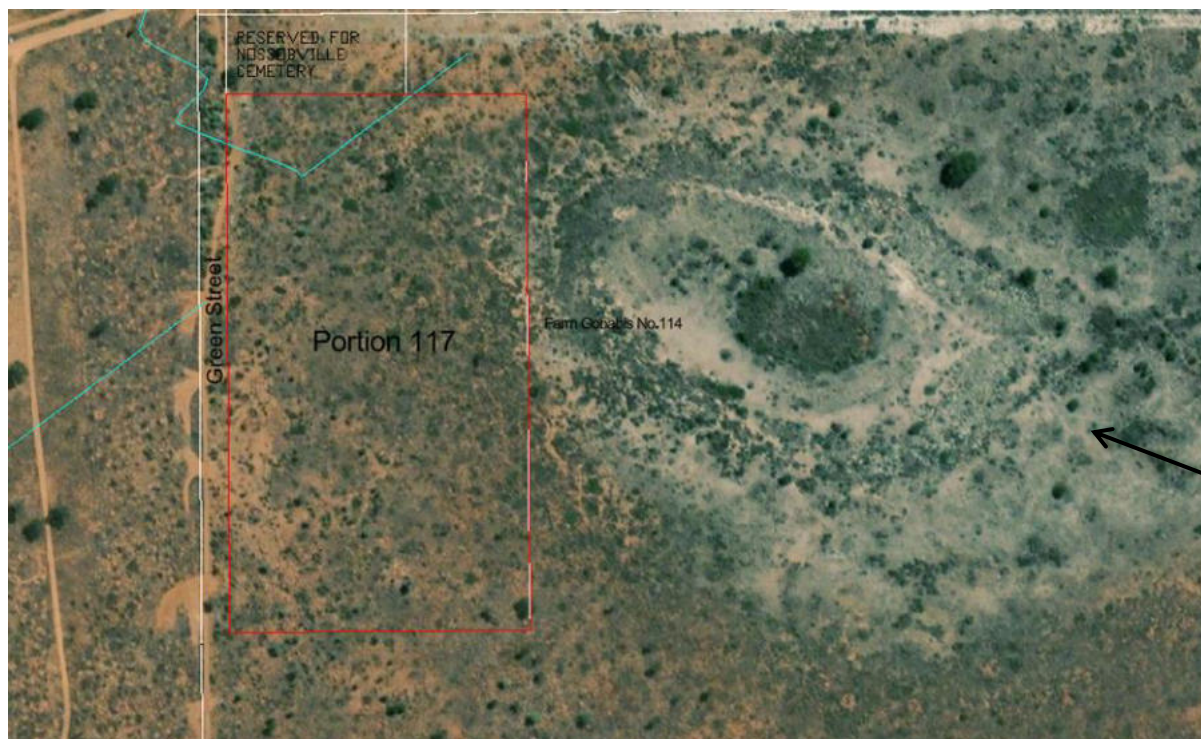


**SUBDIVISION OF THE REMAINDER OF FARM GOBABIS TOWNLANDS NO. 114 INTO PORTION 181 AND THE
REMAINDER AND THE ENVIRONMENTAL IMPACT ASSESSMENT FOR THE REZONING AND CONSTRUCTION OF A**



Coordinates:

X -22.43472 S, 19.00111 E

Y -22.43472 S, 19.00306 E

