



Project Name:	<i>BACKGROUND INFORMATION DOCUMENT FOR THE ENVIRONMENTAL IMPACT ASSESSMENT FOR THE CONTINUOUS OPERATIONS OF THE BULK LIQUID FUEL STORAGE AND HANDLING FACILITY ON ERF 1213, ONDANGWA, EXTENSION NO. 3, OSHANA REGION</i>
The Proponent:	 <p>Bachmus Oil & Fuel Supplies (Pty) Ltd PO Box 2788 Walvis Bay</p>
Prepared by:	 <p>1st floor Bridgeview Offices & Apartments, No. 4 Dr Kwame Nkrumah Avenue, Klein Windhoek, Namibia PO Box 6871, Ausspannplatz, Windhoek</p>
Release Date:	October 2025
Consultant:	<p>C. Du Toit C. Van Der Walt Cell: 081 127 3145 Email: charlie@greenearthnamibia.com</p>

Table of Contents

1.	INTRODUCTION.....	3
2.	BACKGROUND INFORMATION ON PROJECT	3
2.1.	THE PROPONENT.....	3
2.2.	PROPOSED PROJECT	3
2.3.	INFRASTRUCTURE TO BE CONSTRUCTED AND OPERATIONS ON SITE	7
3.	SUPPORTING BULK SERVICES AND INFRASTRUCTURE PROVISION.....	8
3.1.	ACCESS.....	8
3.2.	WATER SUPPLY / REQUIREMENTS.....	8
3.3.	ELECTRICITY	8
3.4.	SEWAGE DISPOSAL.....	8
3.5.	STORM WATER AND DRAINAGE	8
3.6.	SOLID WASTE	8
3.7.	FIRE PROTECTION.....	9
4.	LISTED ACTIVITIES TRIGGERED BY THE PROPOSED PROJECT	9
5.	APPROACH TO THE ENVIRONMENTAL ASSESSMENT.....	9
5.1.	AIMS OF THE ASSESSMENT PROCESS.....	9
5.2.	METHODOLOGY	10
6.	EXPECTED IMPACTS ON RECEIVING ENVIRONMENT	10
7.	PUBLIC INVOLVEMENT PROGRAM	11

List of Figures

<i>Figure 1: Locality of Ondangwa Town</i>	<i>4</i>
<i>Figure 2: Locality Map of the Project Site</i>	<i>5</i>
<i>Figure 3: Erf 1213, Ondangwa Locality Map</i>	<i>6</i>
<i>Figure 4: Tanks present on site</i>	<i>7</i>
<i>Figure 5: Truck being filled with fuel and truck being used on site</i>	<i>8</i>

THE FOLLOWING IS A BACKGROUND INFORMATION DOCUMENT FOR THE ENVIRONMENTAL IMPACT ASSESSMENT AND ENVIRONMENTAL MANAGEMENT PLAN TO OBTAIN AN ENVIRONMENTAL CLEARANCE FOR THE CONTINUOUS OPERATIONS OF THE BULK LIQUID FUEL STORAGE AND HANDLING FACILITY ON ERF 1213, ONDANGWA, EXTENSION NO. 3, OSHANA REGION

1. INTRODUCTION

Green Earth Environmental Consultants have been appointed by Bachmus Oil & Fuel Supplies (Pty) Ltd, the Proponent, to attend to and complete an Environmental Impact Assessment and Environmental Management Plan (EMP) to obtain an Environmental Clearance Certificate as per the requirements of the Environmental Management Act (No. 7 of 2007) and the Environmental Impact Assessment Regulations (GN 30 in GG 4878 of 6 February 2012) for the continuous operations of the bulk liquid fuel storage and handling facility on Erf 1213, Ondangwa, Extension No. 3, Oshana Region.

The Background Information Document (BID) serves to convey information regarding the proposed project to Interested and Affected Parties (I&APs) to allow them the opportunity to comment on the proposed project.

This document contains the following information:

- A brief background on the proposed project.
- The approach to the environmental assessment process.
- Environmental and planning issues identified.
- How to become involved.

2. BACKGROUND INFORMATION ON PROJECT

2.1. The Proponent

The Proponent is a Namibian Owned Company specialising in the supply of various lubricants, oils and hydraulics for a number of applications in the industrial, mining, marine, agriculture, automotive, manufacturing, energy and construction industries. They have a network of commercial outlets located all over Namibia where they offer a unique combo-solution-driven product and service offering. This includes the supply, storage, tracking of dispensing and monitoring of fuels and oils.

2.2. Proposed Project

The Proponent operates a bulk liquid fuel storage and handling facility supplying wholesale customers with diesel, illuminated paraffin and lubricants on Erf 1213, Ondangwa. This facility was taken over from Engin Namibia some time ago and is an ongoing operation. Unfortunately the ECC issued to Engin Namibia was never transferred to the Proponent and could also not be obtained from the MEFT. The facility is located on the corner of King Nangolo Amutenya Road and Ondjondjo Street in Ondangwa. The current storage facilities are 2 X 23m³ self-bunded above ground tanks for diesel storage and a 23m³ tank with a concrete bund wall for

the storage of Illuminated Paraffin. Erf 1213, Ondangwa is zoned “business” and is located directly northeast of the Ondangwa Town Council’s Offices. The Erf is 2344 m² in extent. The site is surrounded by commercial properties. It is the intention of the Proponent to continue with the operations of the wholesale fuel site for which Environmental Clearance is required.

The locality of the site is shown on *maps* below:

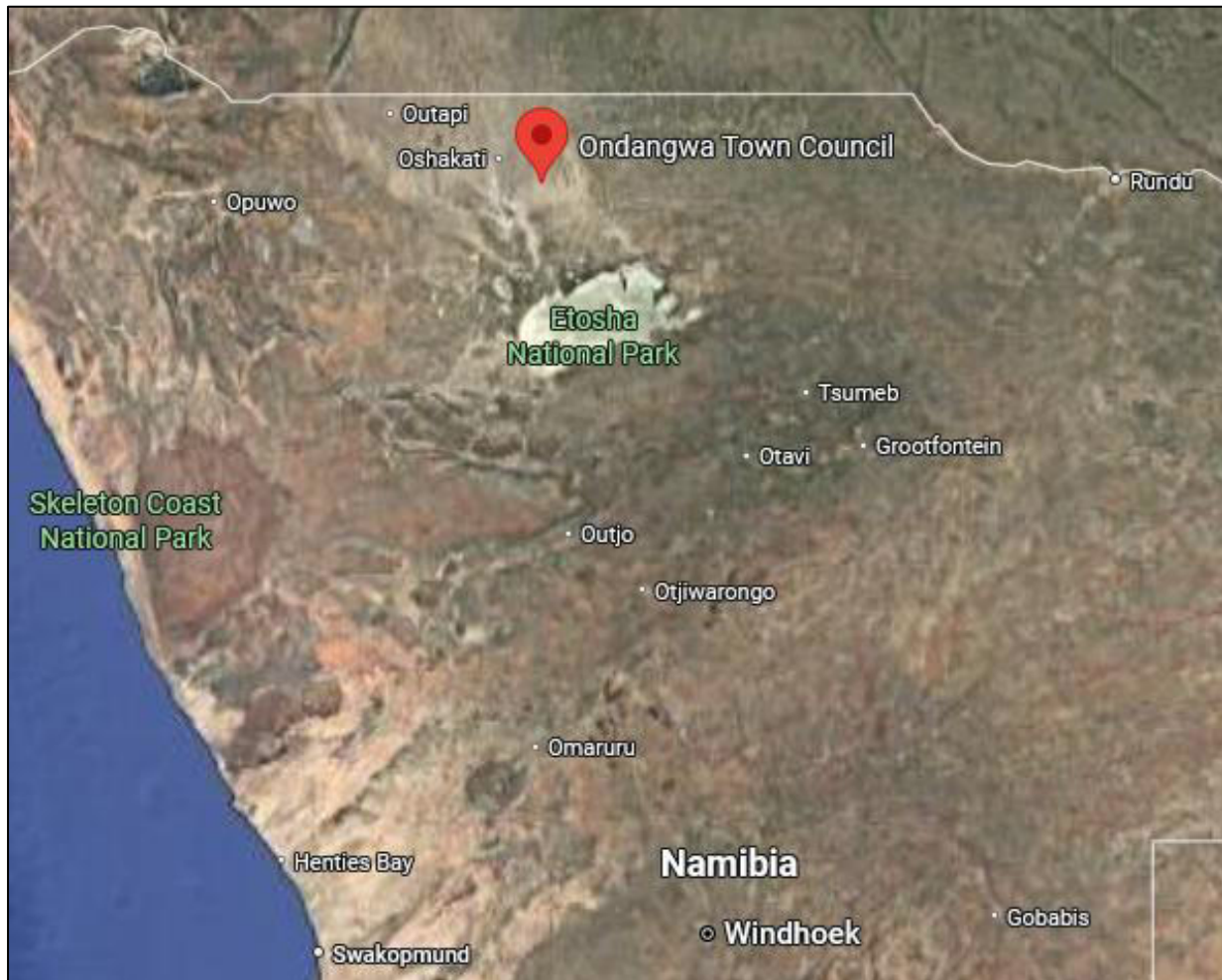


Figure 1: Locality of Ondangwa Town

ERF 1213, ONDANGWA, EXTENSION NO. 3, OSHANA REGION

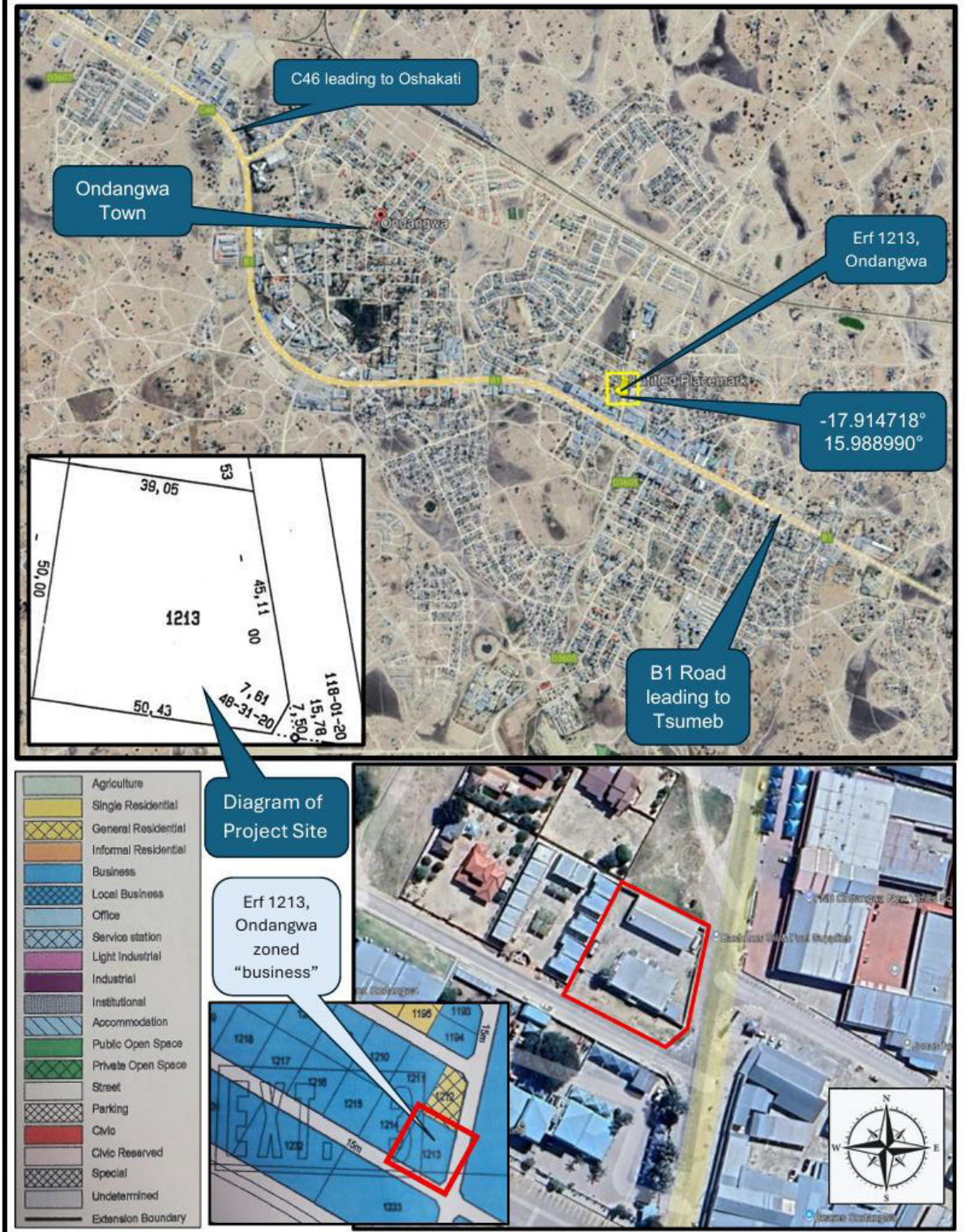


Figure 2: Locality Map of the Project Site

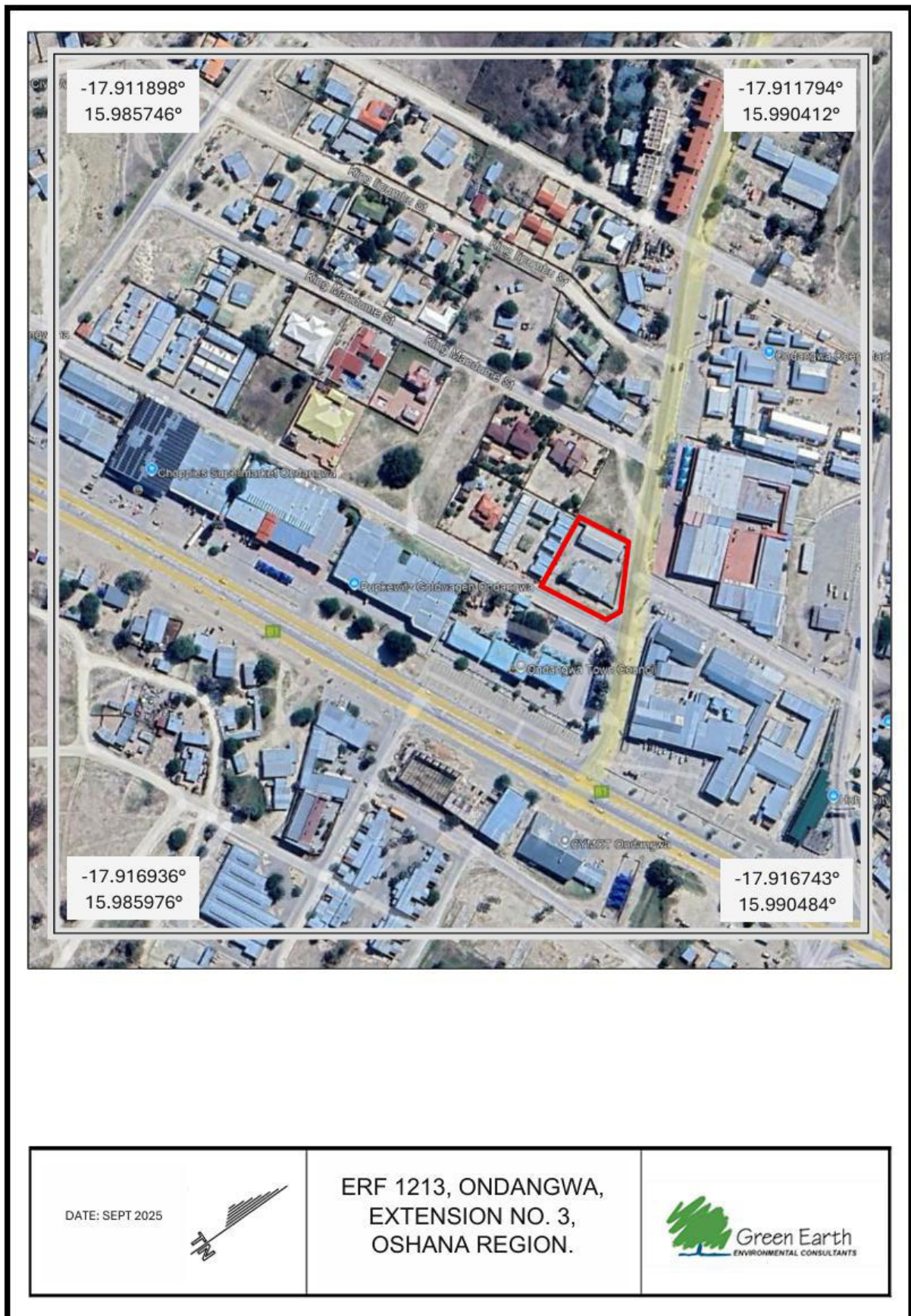


Figure 3: Erf 1213, Ondangwa Locality Map

2.3. Infrastructure to be constructed and operations on site

The following amenities / structures have been constructed on the site:

- Office building
- Ablution facilities
- Motor Control Centre and backup generator room
- Firefighting equipment linked to the municipal water network
- Product pump house for loading and offloading
- Tank concrete ring foundations with secondary containment
- Steel horizontal storage tanks
- Oily water separator and drainage system
- Boundary walls and security perimeter fence
- Area lighting and CCTV
- Warehouse for storing and handling of lubricants

Below is a summary of the typical operational activities to be undertaken on the site:

- Movement of pump attendants attending to customers.
- Filling of commercial vehicles (trucks) and tankers with diesel.
- Filling of drums with Illuminated Paraffin
- Administrative activities related to the facility.



Figure 4: Tanks present on site

The site is equipped with two 23 m³ aboveground storage diesel tanks in a self-bunded containment unit. This is supplied with a dispensing point without spill control surfacing for tank filling and dispensing. Also on site is a 23 m³ paraffin tank, this tank is contained within a bund area, surrounded with soil.



Figure 5: Truck being filled with fuel and truck being used on site

3. SUPPORTING BULK SERVICES AND INFRASTRUCTURE PROVISION

The following bulk services are proposed:

3.1. Access

The site will have a dedicated entrance and dedicated exit. The site obtains access from King Nangolo Amutenya Road and Ondjondjo Street.

3.2. Water supply / requirements

The project site is connected to the water reticulation system of the Town of Ondangwa.

3.3. Electricity

Electricity to the site is supplied by NORED.

3.4. Sewage disposal

The sewer of the site is connected to the sewage reticulation system of the town.

3.5. Storm water and drainage

The natural flow of stormwater has been accommodated in the placement of the storage facilities and buildings and the natural flow is accommodated where possible. Any new structures or developments on the site must be planned to accommodate surface water/stormwater and ensure that it does not endanger neighbouring structures.

3.6. Solid waste

Solid waste is collected from the site by Ondangwa Town Council.

3.7. Fire protection

The Proponent has the necessary fire protection infrastructure / extinguishers as per municipal requirements. A Fire Protection Specialist has introduced a proper fire protection plan with the required infrastructure and is overseeing the annual auditing and maintenance of the infrastructure.

4. LISTED ACTIVITIES TRIGGERED BY THE PROPOSED PROJECT

In terms of the Environmental Management Act (No. 7 of 2007) and the Environmental Impact Assessment Regulations (GN 30 in GG 4878 of 6 February 2012) an Environmental Impact Assessment (EIA) Report and an Environmental Management Plan is required as the following listed activities are involved:

ENERGY GENERATION, TRANSMISSION AND STORAGE ACTIVITIES
<ul style="list-style-type: none">- <i>The construction of facilities for the refining of gas, oil and petroleum products.</i>
HAZARDOUS SUBSTANCE TREATMENT, HANDLING AND STORAGE
<ul style="list-style-type: none">- <i>The storage and handling of dangerous goods, including petrol, diesel, liquid petroleum gas or paraffin, in containers with a combined capacity of more than 30 cubic meters at any one location.</i>- <i>Construction of filling stations or any other facility for the underground and aboveground storage of dangerous goods, including petrol, diesel, liquid, petroleum, gas or paraffin.</i>

The proposed project is thus subject to obtaining an Environmental Clearance.

5. APPROACH TO THE ENVIRONMENTAL ASSESSMENT

The purpose of the Environmental Impact Assessment is to consider social, ecological, legal and institutional issues related to the intended use of the land, guided by the principles and stipulations of the Namibian Environmental Assessment Policy (1995) and Namibia's Environmental Management Act (2007), to determine the desirability of the proposed activities on the suggested area and to develop an Environmental Management Plan (EMP) to mitigate and manage environmental issues identified in the process.

To accomplish the above, the impact study will be undertaken and based on the outcome of the findings; further specialists' investigation might be required to fully assess all impacts.

5.1. Aims of the Assessment Process

- To ascertain existing environmental conditions on the site to determine its environmental sensitivity.
- To inform I&APs and relevant authorities of the details of the proposed activities and to provide them with an opportunity to raise issues and concerns.
- To assess the significance of issues and concerns raised.

- To compile an impact report detailing all identified issues and possible impacts, stipulating the way forward and identify specialist investigations required.
- To outline management guidelines in an Environmental Management Plan (EMP) to minimize and/or mitigate potentially negative impacts.
- To comply with Namibia's Environmental Management Act (2007) and its regulations (2012).

5.2. Methodology

a) Desktop sensitivity assessment

Literature available on the area will be reviewed to determine potential environmental issues and concerns.

b) Site assessment (site visit)

This involves investigating the environmental parameters on site in order to enable further understanding of the potential impacts on site.

c) Involvement of Interested and Affected Parties

Stakeholders will be notified and given the opportunity to comment on the proposed activities and engage in the planning process. The findings of the assessment process will be incorporated in the environmental impact assessment report.

6. EXPECTED IMPACTS ON RECEIVING ENVIRONMENT

From previous experience with developments of this nature and comments received from Affected Parties, the following key impacts on the receiving environment can be expected:

Socio-economic environment:
• Community health issues - transmission of diseases.
• Increase in criminal activities.
• Cultural/heritage impacts.
• Employment creation.
• Improvement of service delivery.
Bio-physical environment:
• Effect on natural and general ambiance of the area and surroundings.
• The use of water during construction and operations.
• The generation of dust during construction.
• Material wastage (packing, building waste) polluting the site and neighbouring environment.
• Health and safety of staff if not attended to satisfactorily.
• Impact on surface and groundwater.
• Noise during operation.
• Surface drainage systems (flow of surface draining systems).

These impacts and others which will be identified during the environmental scoping procedures and the engagement of the interested and affected parties will be evaluated to determine the significance of impact and if and how these impacts can be mitigated.

The above-named aspects will be covered in the Environmental Management Plan to be mitigated.

7. PUBLIC INVOLVEMENT PROGRAM

During the public consultation process, Green Earth Environmental Consultants do the following:

- Identify and inform key stakeholders, authorities, the local authority (municipality), and interested or affected members of the public (I&APs).
- Give notice of the proposed activity as per the requirement of the Regulations through national newspapers, site notices and letters.
- Provide I&APs with additional information on the proposed activity by sending them this Background Information Document (BID).
- Schedule a public meeting if there is enough public interest to which all registered and identified I&APs will be invited, facilitate stakeholder participation and engagement and provide details of issues raised during the public involvement program and scoping exercise.
- Record all comments of I&APs, supported by responses provided by Green Earth, in a report to be included in the EIA.
- Inform the Proponent of comments relevant to the project's planning, implementation and operations and for inclusion in the EMP and consideration.

As an important part of the Environmental Impact Assessment process, you as stakeholder or interested member of the public are invited to find out more about what is being proposed, the implications thereof on the environment and/or to raise any issues or concerns.

Should you have any questions regarding the project, please contact **GREEN EARTH Environmental Consultants** at the contact details (*Charlie du Toit: 081 127 3145 or carien@greenearthnamibia.com*) provided on *Page 1* of this document. **The closing date for any questions, comments, inputs or information is 10 November 2025.**

COMMENTS FROM INTERESTED AND AFFECTED PARTIES

PERSONAL PARTICULARS			
Name and Surname:			
Organization:			
Postal Address:			
Telephone Number:		Email Address:	
Fax Number:		Cellphone Number.:	
INTEREST IN PROJECT			
COMMENTS ON PROJECT			
Signature:		Date:	

Kindly take note that comments should reach our office by 10 November 2025.