

PROPOSED DEVELOPMENT AND OPERATION OF A TRUCKPORT, FUEL RETAIL FACILITY AND SHOPPING COMPLEX IN AMINUIS CONSITUENCY, OMAHEKE REGION-NAMIBIA

PROPONENT: MARVELOUS DEVELOPMENT AND INVESTMENTS CC

ENVIRONMENTAL IMPACT ASSESSMENT-SEPTEMBER 2025

INTRODUCTION

Marvelous Development and Investment cc has identified the dire need for improved fuel supply services in Omaheke region. In this respect, the proponent has taken on a venture to develop a new Truckport with a truck parking bay and construction of a shopping complex. In addition, due to the high volume of trucks using the Aranos road from the south to join the Trans Kalahari highway the proponent has seen it as an opportunity to provide for improved fuel supply, resting facilities and shopping needs for commuters and truck drivers.

In this respect **Junior Baiano Industrial Consultants (JBIC) cc** has been appointed to carry out an Environmental Assessment study to obtain an environmental clearance certificate as per the requirements of the Ministry of Mines and Energy and the Ministry of Environment and Tourism in terms of new fuel retail facilities.

The study will incorporate biophysical, ecological and socio-economic baseline investigations relating to the proposed project. In terms of the Namibian environmental Impact Assessment Regulations of 2012, an Environmental Clearance Certificate is to be obtained before the project can proceed.

This is because Section 9.4 of the regulations states that the storage and handling of dangerous goods, including petrol, diesel, liquid petroleum gas or paraffin, in containers with a combined capacity of more than 30 cubic meters at any one location, would require an EIA.

AIMS & OBJECTIVES OF THIS EIA PROCESS

The aims of this EIA:

- To comply with Namibia's Environmental Assessment Policy, Environmental Management Act (No. 7 of 2007) with its 2012 EIA Regulations and the;
- Consult all interested and affected parties such as local residents and conservancy officers to ensure that their inputs are taken into account;
- To assess the significance of issues and concerns raised;
- Review the legal and policy framework and its relevance to this project;
- Describe general and socio-economic environment of the project to determine impacts and suitability to the project site.
- Identify and assess impacts related to the continued operations.
- Compile an Assessment Report and Management Plan (EMP), which includes recommendations and methods to minimize the identified negative environmental impacts of the proposed project.
- To identify existing environmental conditions and associated environmental sensitivities within and adjacent to the project area that may potentially be affected, i.e. Environmental sensitivity and monitoring procedures.

THE PUBLIC PARTICIPATION PROCESS

The Public Participation Process (PPP) is an integral part of the EIA process whereby it allows the public to obtain information about the proposed project, to view documentation, to provide input and voice any concerns concerning the project. The Public Participation Processes that will be undertaken will include consultation with the local authority, line ministries, government extension offices, owners of neighboring properties and other I&AP's living around the proposed area.

During the meeting participants will be availed an opportunity to comment, ask questions and raise any concerns be it environmental or social regarding the proposed solar farm. Comments will be recorded and considered in the Environmental Assessment report that will be submitted to the Ministry of Environment for review

PROJECT DESCRIPTION

The applicant intends to develop on a 10 ha. Piece of land situated in Aminuis Constituency the following:

-Truck Port: The truck port will have the capacity to park up to 72 trucks and will include a shower, ablution facility, a mess and a 22-room bed and breakfast facility for the truck drivers. Within the truck port, we will provide 3 phase power and parking for cold storage trucks. This would enable them to rest overnight and still keep the cargo at the required temperature without running the engine

-Fuel Retail facility: The Service Station would be a 6-pump canopy supported by three tanks each of 46 000 litre. Two holding diesel and one fuel. There would also be a convenience store. The fuel station would be Namcor branded.

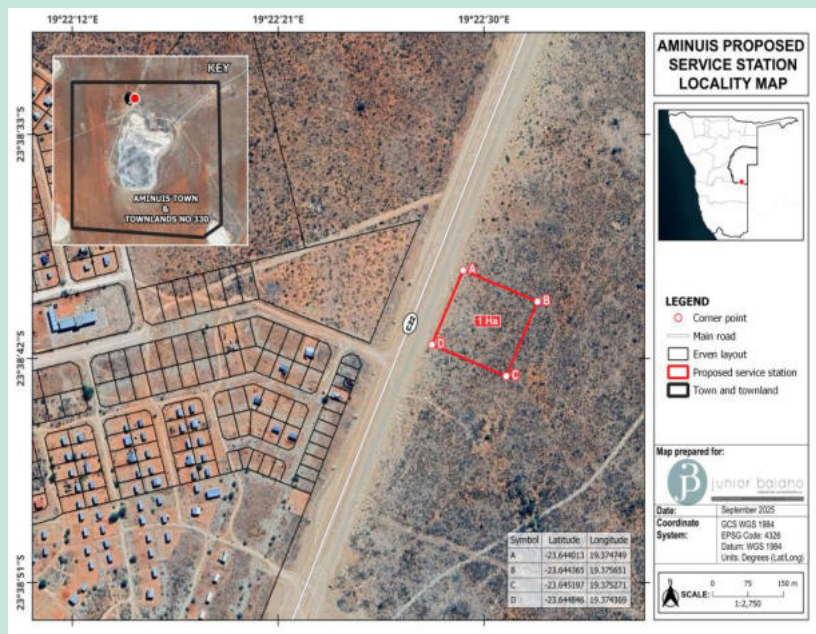
-Fuel Depot: This will be a 1.2 million-litre depot consisting of an equal split between diesel and petrol. To give us a competitive advantage.

-Shopping Complex: Consisting of wide array of shops for convenience of one stop destination for shopping and fuel supply, inclusive of food outlets and entertainment. _

PROJECT LOCATION

The proposed project will be established in Aminuis Constituency, which is 171 km from Gobabis and 81km from Aranos. The exact project site is depicted below:

Figure1: Site Locality Map



ANTICIPATED PROJECT IMPACTS

Potential Impacts	Assessment to be Undertaken
Negative Impacts	
Land use Change (Aesthetic value)	baseline assessment
Impacts on fauna and Flora	JBIC EIA Team Vertebrate fauna (wildlife) and flora (vegetation) specialist assessment If there is need for specialist Assessment, the consultation process will Inform.
Impacts on surface and groundwater resources	JBIC EIA Team baseline assessment
Health and Safety hazards	JBIC EIA Team baseline assessment
Cumulative impacts of the project Operation	JBIC EIA Team baseline assessment
Positive Impacts	
Revenue generation	JBIC EIA Team baseline assessment
Land rehabilitation	JBIC EIA Team baseline assessment
Employment creation	JBIC EIA Team baseline assessment

HOW TO PARTICIPATE?

This Public Consultation process forms an important component of the Environmental Assessment process. It is defined in the EIA Regulations (2012), as a “process in which potential interested and affected parties are given an opportunity to comment on, or raise issues relevant to, specific matters” (S1).

You can participate through the following:

- Responding to the newspaper adverts for public meeting, availability of scoping report and decision made by MET.
- **PUBLIC MEETING DETAILS:**
Date: 21 September 2025
Venue: Aminuis Settlement Office
Time: 10h00

OUR CONTACT DETAILS.....

You can send all your comments and enquiries to the following:

Mr. Fredrich Nghiyolwa
Tel: +264 81 147 2029 /061-219773
Email: JuniorB200581@gmail.com



ENVIRONMENTAL IMPACT ASSESSMENT PROCESS FOR THE PROPOSED DEVELOPMENT AND OPERATION OF A TRUCKPORT, FUEL RETAIL FACILITY AND SHOPPING COMPLEX IN AMINUIS CONSTITUENCY, OMAHEKE REGION-NAMIBIA

KINDLY COMPLETE THIS FORM IN DETAIL AND RETURN TO:

Fredrich Nghiyolwa

Junior Baiano Industrial Consultants cc
PO Box 23537
Windhoek
Tel: 061 219 773
Cell: 0811472029 /0812095996
Email Address: JuniorB200581@gmail.com

Personal Details

Name & Surname.....
Postal Address..... Email

Town..... Tel:.....

What is your main area of interest regarding the proposed development?

.....
.....
.....
.....
.....
.....

Do you have any points of concern or support regarding the proposed project? If "yes", please briefly list these in point format:

YES / NO

.....
.....
.....
.....
.....

Should the project go ahead? If "no" please state reasons why:

YES / NO

.....
.....
.....
.....
.....