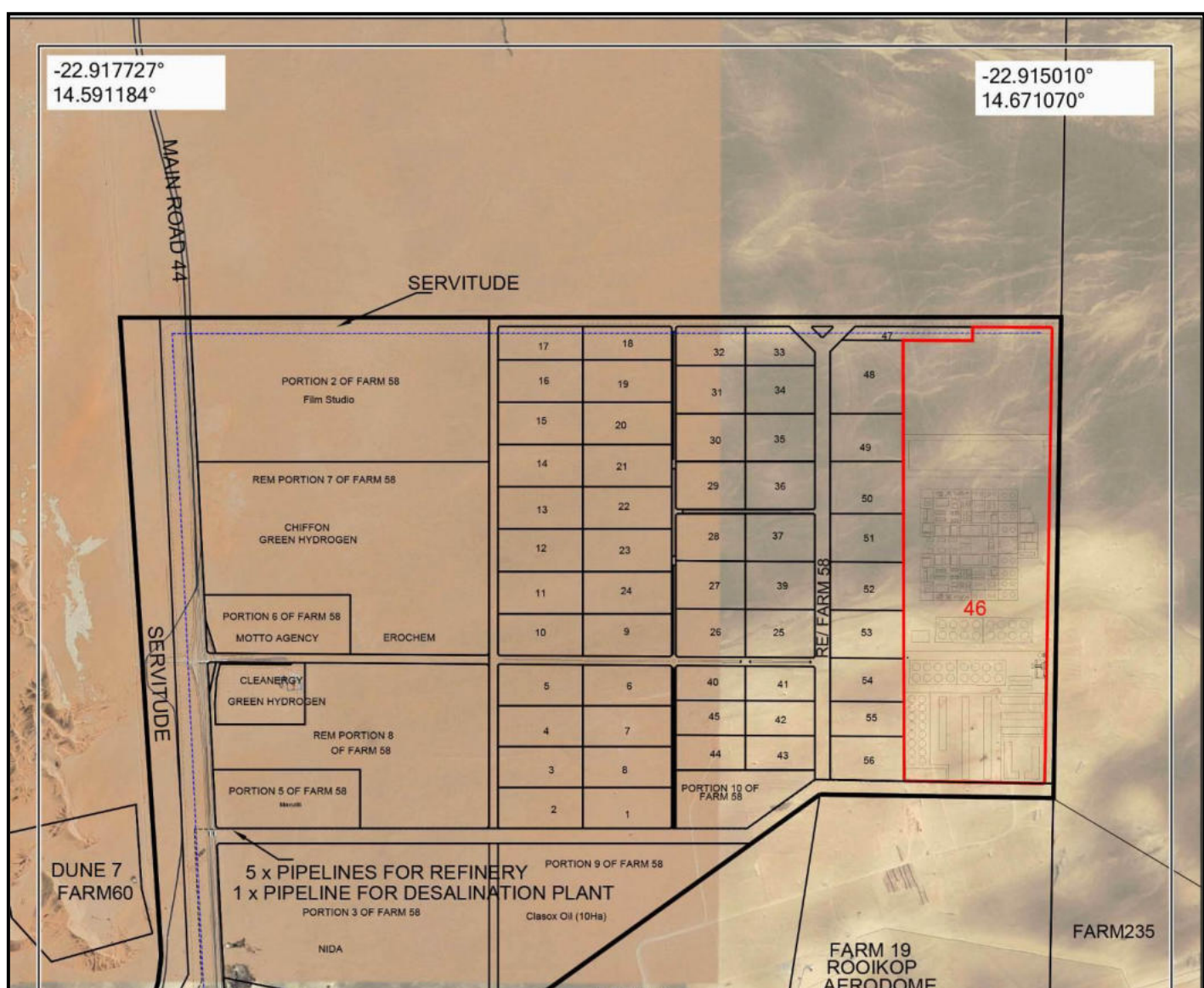


-22.917727°  
14.591184°

-22.915010°  
14.671070°



**ENVIRONMENTAL IMPACT ASSESSMENT  
TO CONSTRUCT AND OPERATE A  
500MW RENEWABLE ENERGY POWER  
PLANT ON PORTION 46 OF THE  
REMAINDER OF FARM 58, WALVIS  
BAY, ERONGO REGION**

**2026**

**App - 250910006390**

Project Name:	<p align="center"><b>ENVIRONMENTAL IMPACT ASSESSMENT TO CONSTRUCT AND OPERATE A 500MW RENEWABLE ENERGY POWER PLANT ON PORTION 46 OF THE REMAINDER OF FARM 58, WALVIS BAY, ERONGO REGION</b></p>
The Proponent:	<div data-bbox="810 568 1197 853" data-label="Image"> </div> <p align="center">ISF Trading Enterprises (Pty) Ltd P O Box 27278 WINDHOEK</p>
Prepared by:	<div data-bbox="555 1111 1445 1350" data-label="Image"> </div> <p align="center">1<sup>st</sup> floor Bridgeview Offices &amp; Apartments, No. 4 Dr Kwame Nkrumah Avenue, Klein Windhoek, Namibia PO Box 6871, Ausspannplatz, Windhoek</p>
Release Date:	<p align="center">May 2026</p>
Consultant:	<p align="center">C. Du Toit C. Van Der Walt Cell: 081 127 3145 Email: charlie@greenearthnamibia.com</p>

## EXECUTIVE SUMMARY

*Green Earth Environmental Consultants* were appointed by the Proponent, ISF Trading Enterprises (Pty) Ltd, to conduct an Environmental Impact Assessment to obtain an Environmental Clearance to construct and operate a 500MW Renewable Energy Power Plant on Portion 46 of the Remainder of Farm 58, Walvis Bay, Erongo Region. The land within the immediate vicinity of the project site is predominately characterized by open land, industrial, business, and institutional activities. In terms of the Regulations of the Environmental Management Act (No 7 of 2007) an Environmental Impact Assessment must be done to address the following 'Listed Activities':

### **ENERGY GENERATION, TRANSMISSION AND STORAGE ACTIVITIES**

*The construction of facilities for:*

*(a) the generation of electricity.*

*(b) the transmission and supply of electricity.*

The key characteristics/environmental impacts of the proposed project are as follows:

<b>Impact on environment:</b>	<b>Nature of impact:</b>
Creation of employment and transfer of skills	Positive as employment will be created during construction and operations which will also result in the transfer of skills which is important in the current economic climate.
Impact on utilization of municipal and other infrastructure and facilities	Negative during construction due to municipal infrastructure which must be relocated to accommodate the facilities but positive due to the better utilization of existing municipal infrastructure.
Fire hazards associated with storage and handling of products	The unlikely event of a fire from operations or products stored onsite will have a serious negative impact on neighbouring properties.
Smoke and odour from the oil refining operations	Negative during operations. The facility to be positioned down wind of the prevailing winds, the latest technology to be used to reduce smoke and odour, facility position on outside of the development to prevent smoke from being a nuisance to neighbouring land users.
Dust	Negative only during construction, once facility is constructed all access roads and parking areas will be paved or tarred to mitigate dust emissions.
Impact on traffic	Limited as the site is outside the town of Walvis Bay.
Noise	Negative during construction but low

	and on par with the noise levels associated with the uses of an industrial area during operation.
Cultural/Heritage	No items of archeologic value or graves were observed during the site visit which means the impact will be low, if however, any such items or graves are found during construction, the impact will be high and irreversible.
Visual impact	Low as the facility will be constructed in an existing industrial area.
Impact on groundwater, surface water and soil	The impact will be negative in case of spilling of petroleum products during handling and storage, the risk should be mitigated through the installation of spilling control infrastructure and equipment.
Health and safety	Low if mitigated during construction and operation.

The environmental impacts during the operational phase of the proposed project:

<b>IMPACTS DURING OPERATIONAL PHASE</b>			
<b>Aspect</b>	<b>Impact Type</b>	<b>Significance of impacts Unmitigated</b>	<b>Significance of impacts Mitigated</b>
Ecology Impacts	-	M	L
Dust and Air Quality	-	M	L
Groundwater Contamination	-	M	L
Waste Generation	-	M	L
Failure of Reticulation Pipeline	-	M	L
Fires and Explosions	-	M	L
Safety and Security	-	M	L

<b>IMPACT EVALUATION CRITERION (DEAT 2006):</b>		
<b>Criteria</b>	<b>Rating (Severity)</b>	
<b>Impact Type</b>	+	Positive
	O	No Impact
	-	Negative
<b>Significance of impacts</b>	L	Low (Little or no impact)
	M	Medium (Manageable impacts)
	H	High (Adverse impact)

The negative impacts associated with the project are the impact on the natural drainage systems, noise and dust during construction and operation, smoke and odour from the oil refining, the danger of residents and visitors being injured during

construction, the transmission of diseases from people or to people involved in construction and the loss of land. However, mitigation measures will be provided that can control the extent, intensity, and frequency of these named impacts in order not to have substantial negative effects or results.

The type of activities that will be carried out on the site will not negatively affect the amenity of the locality and the activities do not adversely affect the environmental quality of the neighbouring erven or areas. None of the potential impacts identified are regarded as having a significant impact to the extent that the proposed project should not be allowed. However, the operational activities further on need to be controlled and monitored by the assigned subcontractors and the proponent.

The Environmental Impact Assessment which follows upon this paragraph was conducted in accordance with the guidelines and stipulations of the Environmental Management Act (No 7 of 2007) meaning that all possible impacts have been considered and the details are presented in the report. Based upon the conclusions and recommendations of the Environmental Impact Assessment Report and Environmental Management Plan following this paragraph, the Environmental Commissioner of the Ministry of Environment, Forestry and Tourism is herewith requested to:

1. Accept the Environmental Impact Assessment;
2. Approve the Environmental Management Plan;
3. Issue an Environmental Clearance to conduct an Environmental Impact Assessment to obtain an Environmental Clearance to construct and operate a 500MW Renewable Energy Power Plant on Portion 46 of the Remainder of Farm 58, Walvis Bay, Erongo Region and for the following "listed activities":

***ENERGY GENERATION, TRANSMISSION AND STORAGE ACTIVITIES***

*The construction of facilities for:*

*(a) the generation of electricity.*

*(b) the transmission and supply of electricity.*

# TABLE OF CONTENTS

LIST OF FIGURES .....	8
LIST OF TABLES.....	8
LIST OF ABBREVIATIONS.....	9
1. INTRODUCTION .....	10
2. TERMS OF REFERENCE.....	10
3. NEED AND DESIRABILITY .....	11
4. BACKGROUND INFORMATION ON PROJECT .....	13
4.1. INTRODUCTION .....	13
4.2. SITE DETAILS .....	14
4.3. THE PROPOSED PROJECT .....	15
5. SITE UTILIZATION .....	18
6. 500MW RENEWABLE ENERGY POWER PLANT.....	19
6.1. OFFICE INFRASTRUCTURE .....	23
7. APPROVALS OBTAINED.....	24
8. BULK SERVICES AND INFRASTRUCTURE.....	25
8.1. ACCESS.....	25
8.2. WATER SUPPLY / REQUIREMENTS .....	26
8.3. ELECTRICITY .....	26
8.4. SEWAGE DISPOSAL .....	26
8.5. STORM WATER AND DRAINAGE.....	26
8.6. SOLID WASTE.....	26
8.7. FIRE PROTECTION .....	26
9. APPROACH TO THE STUDY .....	26
10. ASSUMPTIONS AND LIMITATIONS.....	27
11. LEGAL AND POLICY REQUIREMENTS.....	28
12. AFFECTED RECEIVING ENVIRONMENT .....	37
12.1. BIODIVERSITY AND VEGETATION .....	37
12.2. GEOLOGY AND SOILS .....	37
12.3. WALVIS BAY'S WATER RESOURCES .....	38
12.4. CORROSION .....	38
12.5. SOCIO ECONOMIC ENVIRONMENT .....	39
12.6. CLIMATE.....	40
12.7. CULTURAL HERITAGE.....	41
13. IMPACT ASSESSMENT AND EVALUATION .....	41
13.1. IMPACTS DURING THE CONSTRUCTION ACTIVITY .....	42

13.1.1.	WATER USAGE.....	42
13.1.2.	ECOLOGICAL IMPACTS.....	43
13.1.3.	DUST POLLUTION AND AIR QUALITY.....	43
13.1.4.	NOISE IMPACT.....	43
13.1.5.	HEALTH, SAFETY AND SECURITY .....	44
13.1.6.	CONTAMINATION OF GROUNDWATER .....	45
13.1.7.	SEDIMENTATION AND EROSION.....	45
13.1.8.	GENERATION OF WASTE.....	45
13.1.9.	CONTAMINATION OF SURFACE WATER.....	46
13.1.10.	TRAFFIC AND ROAD SAFETY.....	46
13.1.11.	FIRES AND EXPLOSIONS .....	46
13.1.12.	SENSE OF PLACE .....	47
13.2.	IMPACTS DURING THE OPERATIONAL PHASE.....	47
13.2.1.	ECOLOGICAL IMPACTS.....	47
13.2.2.	DUST POLLUTION AND AIR QUALITY.....	47
13.2.3.	CONTAMINATION OF GROUNDWATER .....	48
13.2.4.	GENERATION OF WASTE.....	48
13.2.5.	FAILURE IN RETICULATION PIPELINES .....	48
13.2.6.	FIRES AND EXPLOSIONS.....	49
13.2.7.	HEALTH, SAFETY AND SECURITY .....	49
13.3.	CUMULATIVE IMPACTS.....	49
14.	ENVIRONMENTAL MANAGEMENT PLAN.....	50
15.	CONCLUSION .....	50
16.	RECOMMENDATION .....	51
	APPENDIX A: NEWSPAPER NOTICES.....	53
	APPENDIX B: LIST OF INTERESTED AND AFFECTED PARTIES .....	60
	APPENDIX C: COMMENTS RECEIVED.....	61
	APPENDIX D: POWER POINT PRESENTATION AT PUBLIC MEETING ..	66
	APPENDIX E: POWER POINT PRESENTATION FROM PROPONENT ....	67
	APPENDIX F: ATTENDANCE REGISTER .....	73
	APPENDIX G: PHOTOS OF PUBLIC MEETING .....	75
	APPENDIX H: CURRICULUM VITAE OF CHARLIE DU TOIT .....	78
	APPENDIX I: CURRICULUM VITAE OF CARIEN VAN DER WALT.....	80
	APPENDIX J: ENVIRONMENTAL MANAGEMENT PLAN.....	81

## LIST OF FIGURES

<i>Figure 1: Locality Plan of Portion 46, Farm 58, Walvis Bay</i> .....	15
<i>Figure 2: Layout Plan of Portion 46, Farm 58, Walvis Bay</i> .....	16
<i>Figure 3: Layout Plan of Portion 46, Farm 58, Walvis Bay with Photo</i> .....	17
<i>Figure 4: Layout Plan of site (obtained from Seal Consulting Engineers)</i> .....	18
<i>Figure 5: 500MW Plant layout</i> .....	18
<i>Figure 6: Electric Genset Process</i> .....	20
<i>Figure 7: Genset container and layout (1)</i> .....	21
<i>Figure 8: Genset container and layout (2)</i> .....	21
<i>Figure 9: Plan showing the proposed access road to the site</i> .....	25
<i>Figure 10: Flowchart of the Impact Process</i> .....	36
<i>Figure 11: Biomes in Namibia (Atlas of Namibia, 2002)</i> .....	37
<i>Figure 12: Geology of Namibia (Atlas of Namibia Project, 2002)</i> .....	38
<i>Figure 13: Financial Projections</i> .....	40
<i>Figure 14: Average annual temperatures in Namibia (Atlas of Namibia, 2002)</i> .....	41

## LIST OF TABLES

<i>Table 1: Climate Data</i> .....	40
<i>Table 2: Impact Evaluation Criterion (DEAT 2006)</i> .....	41

## **LIST OF ABBREVIATIONS**

CAN	Central Area of Namibia
EC	Environmental Clearance
ECO	Environment Control Officer
EIA	Environmental Impact Assessment
EMP	Environmental Management Plan
I&APs	Interested and Affected Parties
MEFT	Ministry of Environment, Forestry and Tourism
SQM	Square Meters

## 1. INTRODUCTION

The Proponent, ISF Trading Enterprises (Pty) Ltd, appointed Green Earth Environmental Consultants to conduct an Environmental Impact Assessment and develop an Environmental Management Plan to obtain an Environmental Clearance to construct and operate a 500MW Renewable Energy Power Plant on Portion 46 of the Remainder of Farm 58, Walvis Bay, Erongo Region.

The Environmental Management Act (No. 7 of 2007) and the Environmental Impact Assessment Regulations (GN 30 in GG 4878 of 6 February 2012) stipulates that an Environmental Impact Assessment (EIA) report and management plan is required as the following 'Listed Activities' are involved:

### **ENERGY GENERATION, TRANSMISSION AND STORAGE ACTIVITIES**

*The construction of facilities for:*

- (a) the generation of electricity.*
- (b) the transmission and supply of electricity.*

The Environmental Impact Assessment below contains information on the proposed project and the surrounding areas, the proposed activities, the applicable legislation to the study conducted, the methodology that was followed, the public consultation that was conducted, and the receiving environment's sensitivity and any potential ecological, environmental, and social impacts.

## 2. TERMS OF REFERENCE

To be able to implement the proposed project, an Environmental Impact Assessment and Environmental Clearance are required. For this environmental impact exercise, Green Earth Environmental Consultants followed the terms of reference as stipulated under the Environmental Management Act.

The aim of the environmental impact assessment was:

- To comply with Namibia's Environmental Management Act (2007) and its regulations (2012).
- To ascertain existing environmental conditions on the site to determine its environmental sensitivity.
- To inform I&APs and relevant authorities of the details of the proposed development and to provide them with an opportunity to raise issues and concerns.
- To assess the significance of issues and concerns raised.
- To compile a report detailing all identified issues and possible impacts, stipulating the way forward and identify specialist investigations required.
- To outline management guidelines in an Environmental Management Plan (EMP) to minimize and/or mitigate potentially negative impacts.

The tasks that were undertaken for the Environmental Impact Assessment included the evaluation of the following: climate, water (hydrology), vegetation, geology, soils,

socio economic impact, cultural heritage, groundwater, sedimentation, erosion, biodiversity, sense of place, socio-economic environment, health, safety and traffic.

The EIA and EMP from the assessment will be submitted to the Environmental Commissioner for consideration. The Environmental Clearance will only be obtained (from the DEA) once the EIA and EMP has been examined and approved for the listed activity.

The public consultation process as per the guidelines of the Act has been followed. The methods that were used to assess the environmental issues and alternatives included the collection of data on the project site and surrounding area, info obtained from the proponent and the Ministry of Environment, Forestry and Tourism and identified and affected stakeholders. Consequences of impacts were determined in five categories: nature of impact, expected duration of impact, geographical extent of the event, probability of occurring and the expected intensity.

All other permits, licenses or certificates that are further on required for the operation of the proposed project still needs to be applied for by the proponent.

### **3. NEED AND DESIRABILITY**

The establishment of the Green Energy Complex in Walvis Bay can be motivated in terms of the need and desirability for such a facility as well as the suitability of the site.

#### **The need**

This project forms part of the National Spatial Development Initiatives (SDI) in Namibia, supporting the United Nations 2030 Agenda for Sustainable Development Goals (SDGs), Namibia Vision 2030, Namibia National Development Plan 5 & 6 (NDP5 & 6) and Namibia National Harambee Prosperity Plan II (HPP2), and has therefore obtained Statutory Government Support. Endorsements from various Key Government Stakeholders in Namibia and the SADC Region.

The government of Namibia, in terms of the second Harambee prosperity plan, has identified Walvis Bay as the growth point for industrialization. Walvis Bay is experiencing significant growth over the past six years, and this is expected to continue. Thus, from an economic development point of view, the establishment of a green energy complex will contribute massively to employment creation and poverty alleviation in Walvis Bay and is supported.

The discovery of oil and gas along the Namibian shores will bring a lot of new activities to Namibia and Walvis Bay in specific for which processing, value addition, storage and handling facilities will be required.

The Goals of the green energy complex for Walvis Bay include amongst others:

- Reducing the huge cost that the Government and people are currently spending on importing refined petroleum products to fulfil the demand of “green” fossil fuels each year
- Providing affordable electricity

- Desalination of seawater
- Releasing port congestion in the Walvis Bay harbour and road
- Generating non-skilled and skilled employment
- Provision of additional storage and handling facilities for petroleum products

From the above, the need for the proposed development is confirmed.

### **Desirability**

The site required for the proposed green energy complex must be ±300ha in extent to accommodate the following onsite activities:

- Enough space for the placement of the Oil Refinery, Renewable Energy Power Plant and related Storage Tank Farms.
- Good access to the harbour as well as the rest of Namibia to allow the safe movement of large, interlinked trucks.
- An access corridor/servitude over neighbouring properties to link the site with the harbour with pipelines, gas lines and other infrastructure both below and above ground.
- Weighbridge for weighing and recording of product coming in or going out of the site.
- Office facilities for the staff working on the site.
- Warehousing/tank storage facilities for the storage and handling of raw materials as well as finished/manufactured products.
- Space for the movement and parking of vehicles.
- Be in an industrial area away from any residential area due to the nature of the processes and products to be undertaken and handled on the site.

Portion 46 of the Remainder of Farm 58, Walvis Bay is large enough to accommodate the proposed activities and has been approved by Walvis Bay Municipality for the intended uses. The site is therefore desirable to accommodate the proposed activities and its operations.

According to the information mentioned above, it is believed that there is a need and desirability for the project. The proposed project is desirable as the study area is suitable for the proposed operations, the activities will have a limited impact on the bio-physical environment, enough water is available for construction and proper accesses can be provided to the proposed operations.

Determining what the impact of the operations would be are broken down into different categories and environmental aspects and dealt with in the Environmental Management Plan (EMP). As per the ISO 14001 definition: *an environmental aspect is an element of an organization's activities, products and/or services that can interact with the environment to cause an environmental impact e.g., land degradation or land deterioration among others, that will cause harm to the environment.*

All concerns and potential impacts raised during the public participation process and consultative meetings were evaluated. Predictions were made with respect to their magnitude and an assessment of their significance was made according to the

following criteria:

The Nature of the activity: The possible impacts that may occur are that water will be used in the construction and operational phases, wastewater will be produced that will be handled either by the Municipality or by the proponent, land will be used for the proposed activities, a sewage system will be constructed, and general construction activities will take place, namely the building of infrastructure.

The Probability of the impacts to occur: The probability of the above-named impacts to occur and have a negative or harmful impact on the environment and the community is small since the Environmental Management Plan will also guide these activities. Water will still be used, and wastewater produced, however guidelines will be set that will ensure the impact is minimum.

The Extent of area that the project will affect: The specific project will most likely only have a small impact on the proposed project site itself and not on the surrounding or neighbouring land except for noise, traffic, roads, electricity and dust and there may be a visual impact because of the size of the proposed development. Therefore, the extent that the project will have a negative impact on is not extensive.

The Duration of the project: The duration of the project is uncertain. Water will still be used, and waste produced on a continuous basis and the structures that were constructed will remain and may be visually unpleasing to surroundings.

The Intensity of the project: The intensity of the project is mostly limited to the site however for the above-named items/processes where the intensity of the project will be felt outside the borders of the project site.

According to the information that was present while conducting the Environmental Impact Assessment for the construction and operation of the project, no high-risk impacts were identified and therefore it is believed that the operations will be feasible in the short and long run. Most of the impacts identified were characterized as being of a low impact on the receiving and surrounding environment and with mitigation measures followed, the impacts will be of minimum significance or avoided.

## **4. BACKGROUND INFORMATION ON PROJECT**

### **4.1. INTRODUCTION**

The Proponent, Ikhaya Somandla Family Trading Enterprises (Pty) Ltd (ISF Trading) is a Namibian Company who intends to explore and implement a series of new modes of business integration and Public-Private Partnerships. The Proponent intends to establish a Green Energy Complex in Walvis Bay. The proposed green energy complex will include a 300,000 barrels per stream day (BPSD) Oil Refinery, 500MW Renewable Energy Power Plant and related Storage Tank Farms on land in the industrial area of Walvis Bay, Erongo Region.

This project forms part of the National Spatial Development Initiatives (SDI) in Namibia, supporting the United Nations 2030 Agenda for Sustainable Development Goals (SDGs), Namibia Vision 2030, Namibia National Development Plan 5 & 6 (NDP5 & 6) and Namibia National Harambee Prosperity Plan II (HPP2), and has

therefore obtained Statutory Government Support Endorsements from various Key Government Stakeholders in Namibia and the SADC Region.

## **4.2.SITE DETAILS**

The Proponent applied for a portion of land located on Farm 58, Walvis Bay. Walvis Bay Town Council conditionally allocated Portion 46 (±305,2795 ha), a Portion to be created from the subdivision of the Remainder of Farm 58, Walvis Bay, Erongo Region to the Proponent for the proposed project. The site will be used for the construction and operation of a green energy complex (including a 300,000 BPSD Oil Refinery, 500MW Renewable Energy Power Plant and related Storage Tank Farms). A separate EIA and EMP will be submitted for each activity.

The final transfer of the portion to the Proponent is subject to obtaining an Environmental Clearance as well as other statutory approvals.

### 4.3. THE PROPOSED PROJECT

See below the site where the proposed construction and operation of the 500MW Renewable Energy Power Plant on Portion 46 of the Remainder of Farm 58, Walvis Bay, Erongo Region will be:

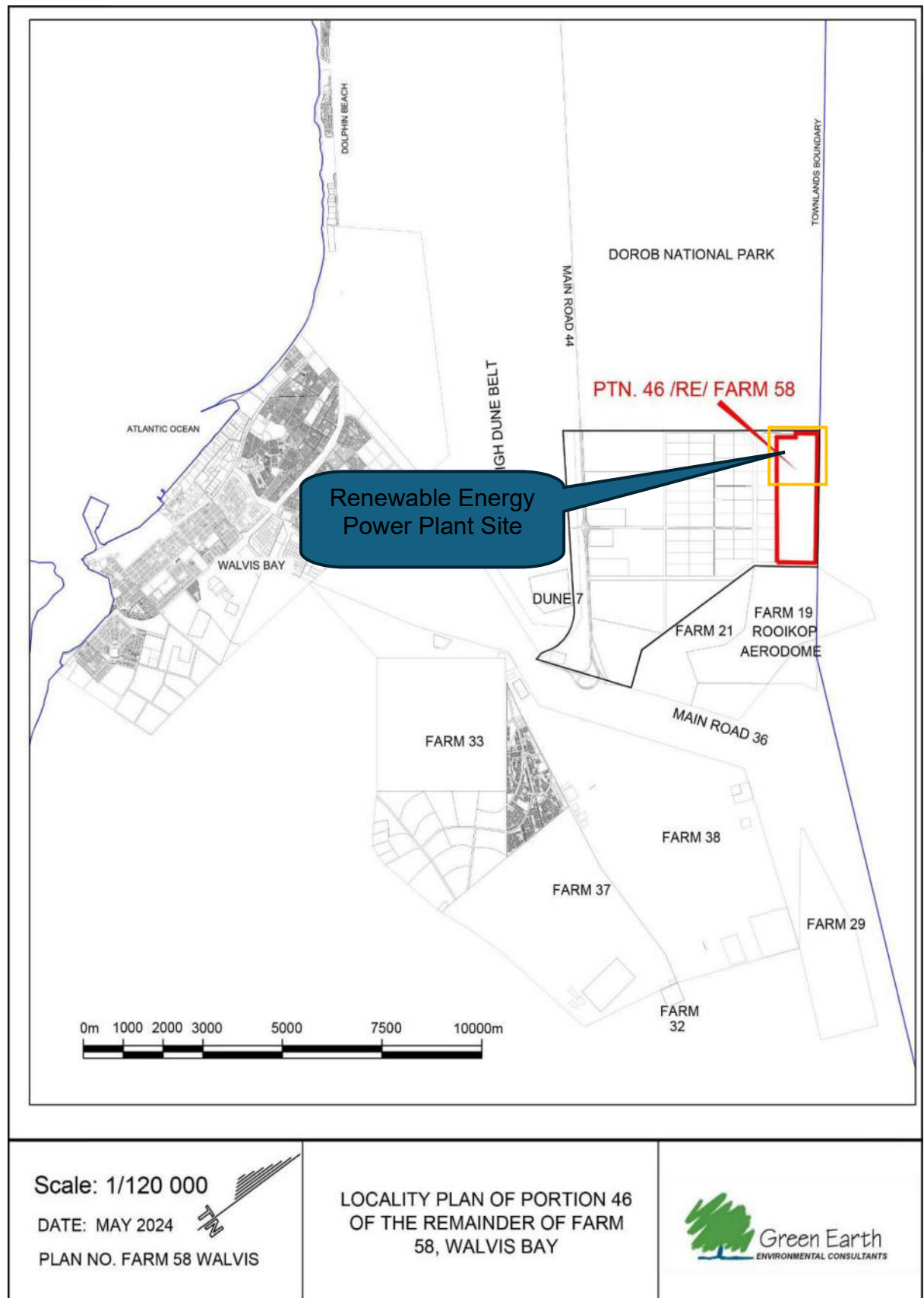


Figure 1: Locality Plan of Portion 46, Farm 58, Walvis Bay

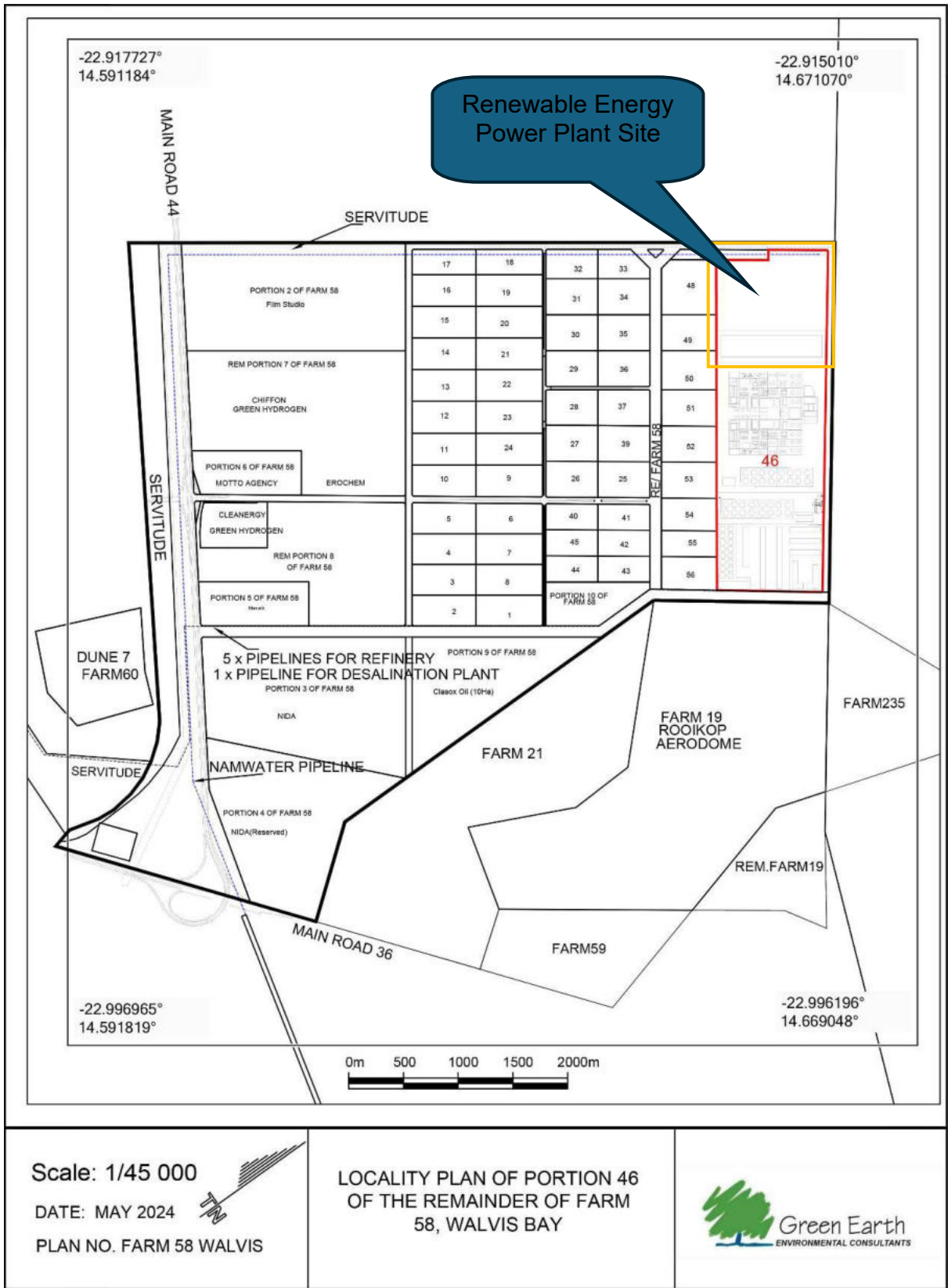


Figure 2: Layout Plan of Portion 46, Farm 58, Walvis Bay

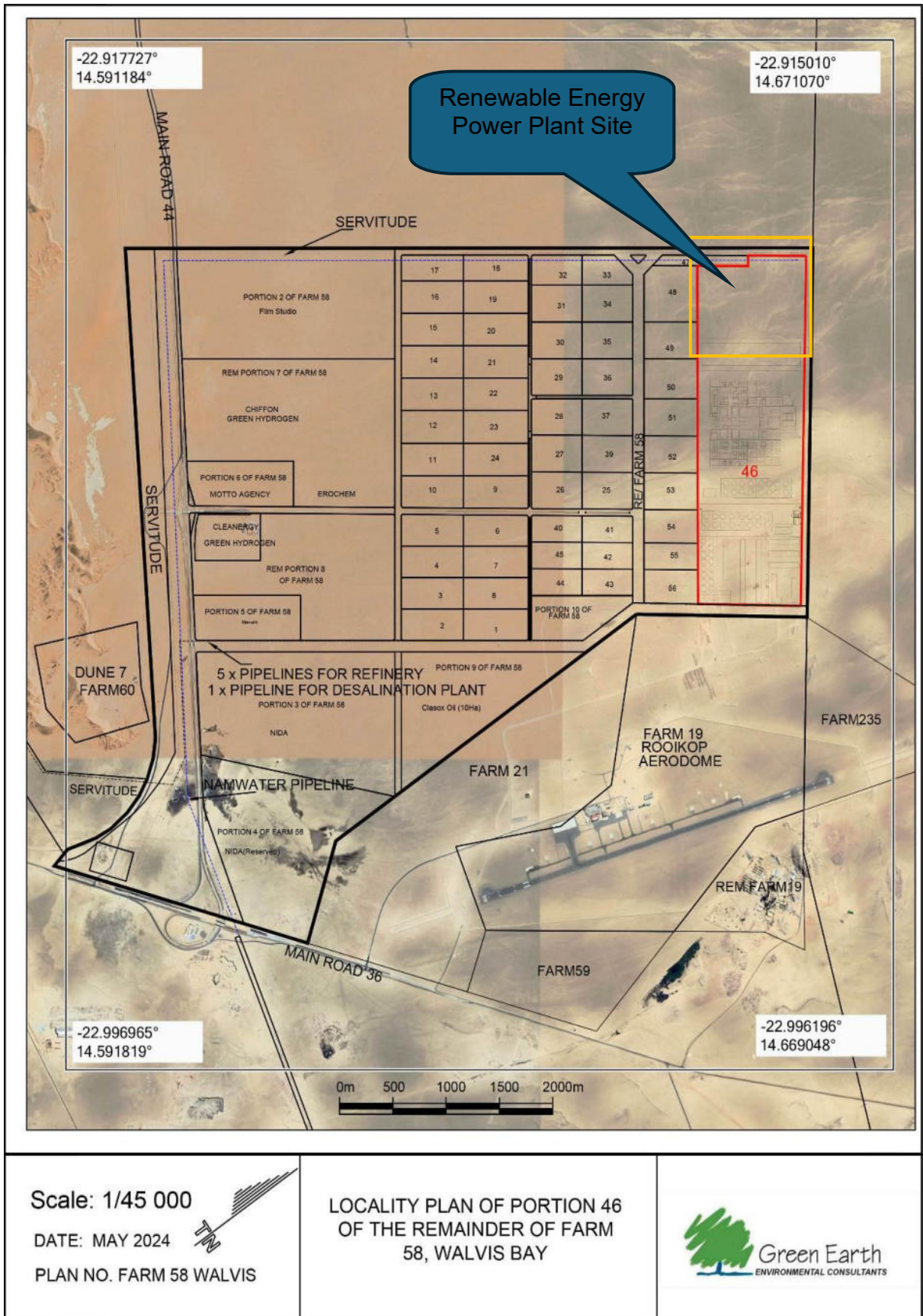


Figure 3: Layout Plan of Portion 46, Farm 58, Walvis Bay with Photo

## 5. SITE UTILIZATION

The site will be shared by the three components of the proposed Green Energy Complex which are made up of a 300,000 BPSD Oil Refinery, 500MW Renewable Energy Power Plant and related Storage Tank Farms. The site plan below shows the proposed placement of the infrastructure. The proposed 500MW Renewable Energy Power Plant requires ± 2ha for the installation of the gensets and supporting infrastructure including storage facilities, offices and parking areas.

See below the site utilization plan showing the placement of the infrastructure:

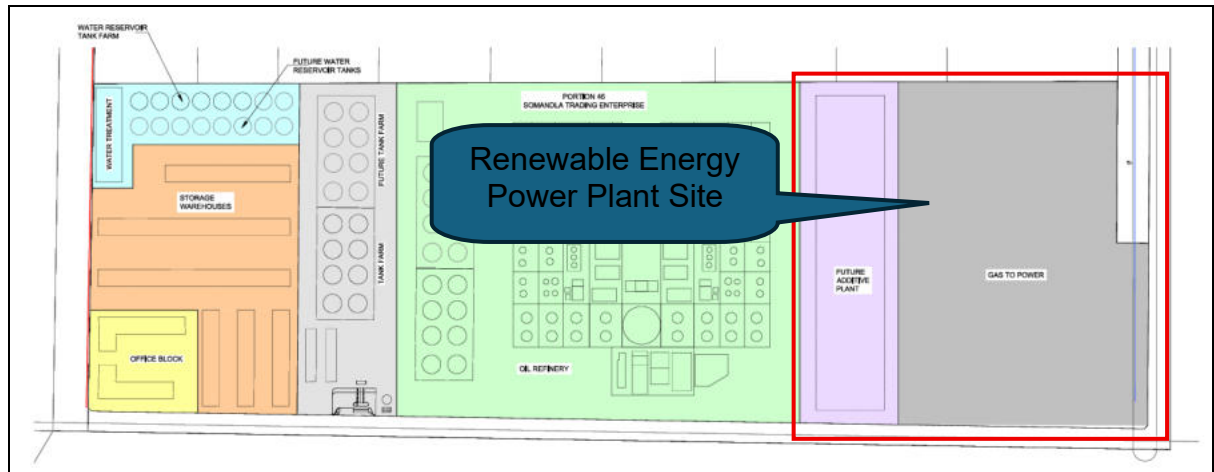


Figure 4: Layout Plan of site (obtained from Seal Consulting Engineers)

See below the proposed 500MW Plant layout:

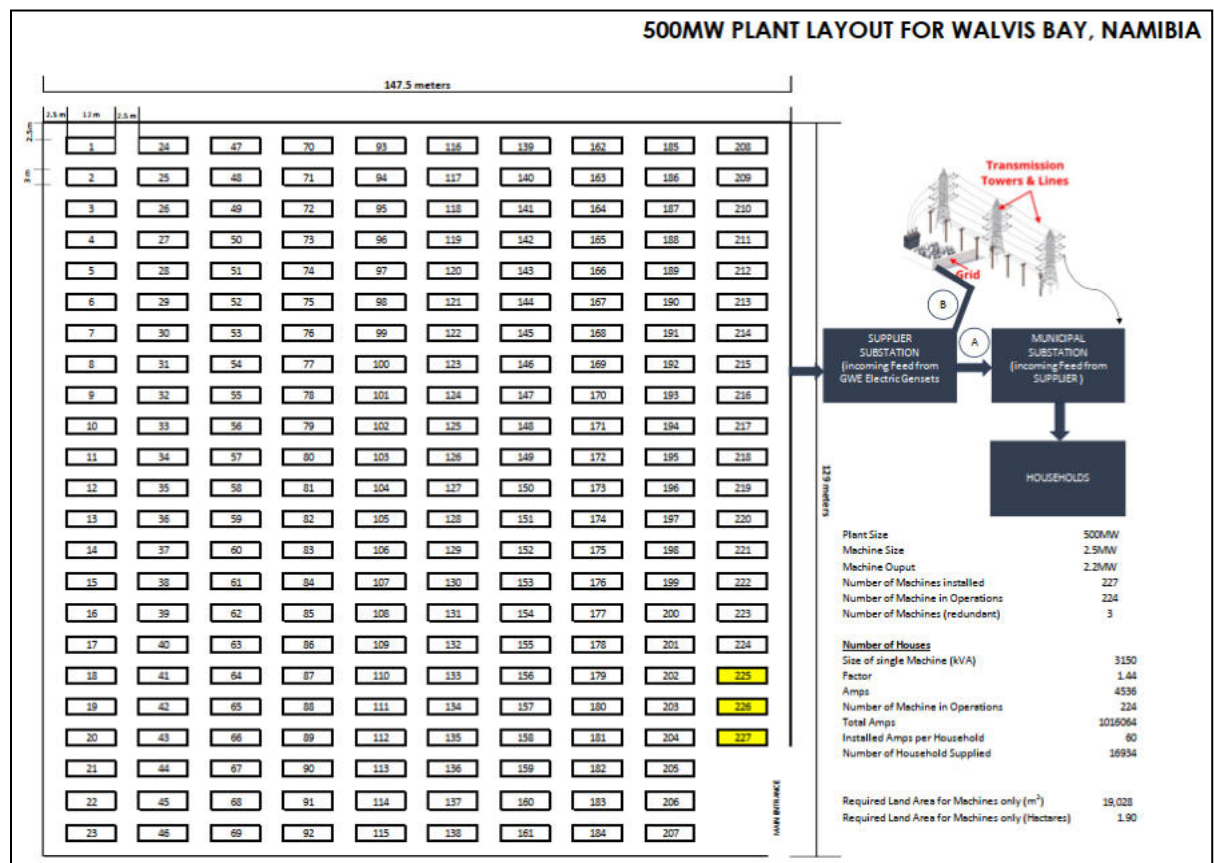


Figure 5: 500MW Plant layout

## **6. 500MW RENEWABLE ENERGY POWER PLANT**

It is the intension to install and operate a battery of GWE's Gensets to generate 500MW as component of the Green Energy Complex. This Genset does not require any fossil fuel or gas as a driver. The GWE's Genset is a new technological breakthrough that operates using a bank of Lithium Titanate Oxide (LTO) supercapacitors to initiate a Geared DC Motor to drive an Alternator which then produces the required electricity. The geared motor is continuously powered by the bank of LTO supercapacitors. The LTO supercapacitors are supported by a specially designed inverter, that converts alternating current (AC) energy from the Alternator to direct current (DC) energy.

GWE Genset Operates as follows: A 350kW DC motor is connected to an In-Line-Gearbox that have planetary gears. The Gearbox is mounted to the motor shaft and, through the internal configuration of mated gears within the housing, decreases the speed of the motor and increases the torque. The In-Line Gearbox creates a powerful rotation on the Alternator drive shaft. The Alternator, in turn, generates a pure sine wave AC electrical current that is received by the distribution panel. The distribution panel sends the AC electrical current to the Clients Substation or Distribution Board and back to the inverter/charger to continue the cycle.

The GWE Genset has the following key components:

- 4 HPS 150 SP Inverters
- HV510 Hubbel Power Packs – 2 Battery Banks made up of 12 Batteries each
- A 350kW DC Motor
- Torque Box
- Transfer Box
- Main Alternator
- Auxiliary Alternator

**The process through which the GWE Genset generates the power and keep the power cycle in operation is as follows:**

- The Inverters supplies power to the 350kW DC Motor, starting the rotation cycle of 3200rpm. Note: the Batteries are used for "Backup" only.
- The 350kW DC Motor is connected to a Torque Box that reduces the speed from 3200 rpm down to 1550 rpm.
- The Torque Box in turn is connected to a Transfer Gearbox – which also increases the torque and at the same time it rotates the Main Alternator and Auxiliary Alternator.
- The Main Alternator delivers about 2.2 MW of power (which feeds into a Substation / Clients Distribution Board for further distribution). 14700 Amps is generated in the process that can supply approximately 245 domestic households with power. A step-up Transformer coupled to the system can increase the number of offtakers.
- The Auxiliary Alternator delivers about 350kW of power that in turn feeds back to the Inverters.

- The Inverters convert the AC power to DC power recharging the batteries and continuing the cycle.

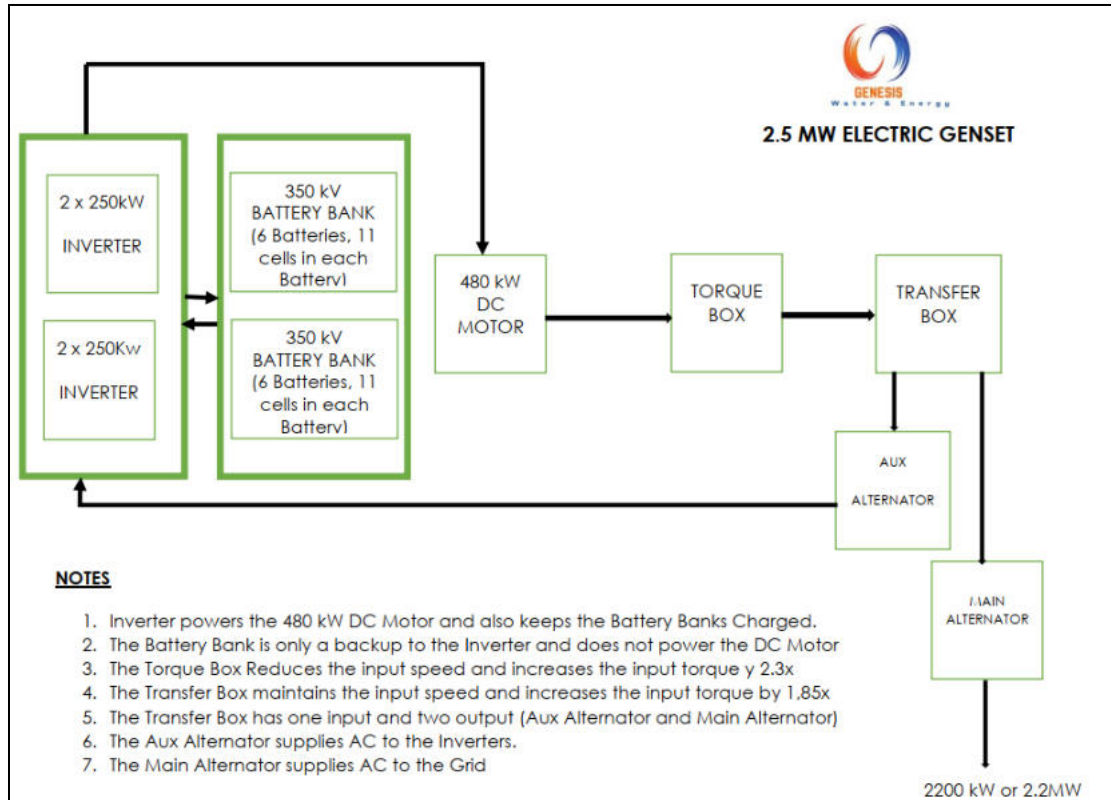


Figure 6: Electric Genset Process

GWE's Gensets are manufactured to generate 2500kva or 2.5MW per genset. To achieve the intended generation of 500MW as component of the Green Energy Complex, a battery of 227 GWE Gensets will be installed. Three (3) of the GWE Gensets will act as back up units in case of a break down or where the service of other units is required to ensure sustained supply of electricity. Each Genset is installed in a container.

See below an example of the genset container and layout:

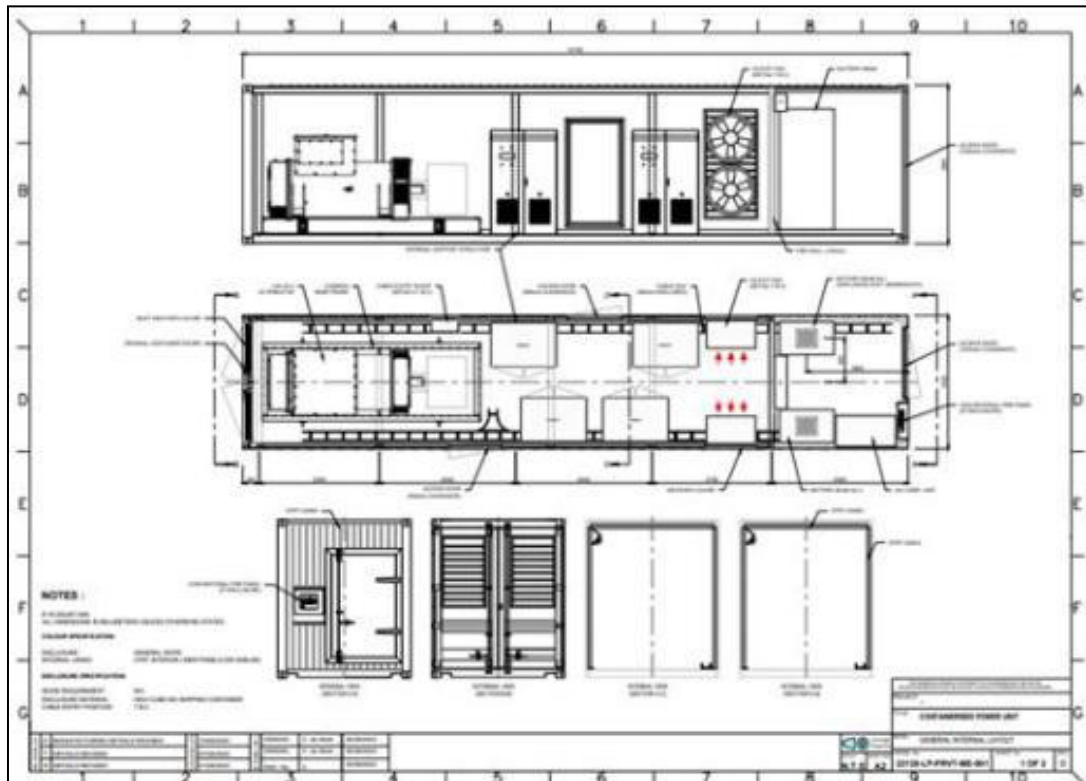


Figure 7: Genset container and layout (1)



Figure 8: Genset container and layout (2)

## The Environmental impact of GWE's Electric Gensets

Renewable energy projects like GWE's Electric Gensets, play a crucial role in transitioning to a sustainable energy future. It offers cleaner alternatives to traditional fossil fuel-based power generation, helping to reduce greenhouse gas emissions and mitigate climate change.

The environmental impacts of the GWE Genset are summarised in the *Table* below:

Impacts	Comment
The GWE's Electric Gensets have socioeconomic benefits	Enhances the reliability, security, and resilience of the nation's power grid. Job creation throughout renewable energy industries. Reduced carbon emissions and air pollution from energy production. Increased energy independence. Eliminates fuel costs which lowers the cost of the electricity produced.
Noise	GWE's Electric Gensets have zero noise pollution and have been tested at one- and seven-meter intervals. At one- and seven-meter intervals, the decibel meter registered 7dB and 2dB respectively. Generally, exposure to sound levels above 85 dB is considered damaging to human hearing. Any noise exceeding 70 dB is considered disturbing. Given the above parameters, GWE's Electric Gensets are well below the acceptable noise levels.
Exhaust gas or fuel gas	GWE's Electric Genset have no exhaust system. It has therefore zero carbon emissions as there are no combustible fossil fuels used.
Synthetic oil lubricating the gearboxes	The synthetic oil in the gearboxes is below the legal required volume of 210 litres. There is a spillage tray built into the structure that will contain double the volume of oil from both gearboxes in the unlikely event of a spillage. Used oil or any spillage within the contained area will be disposed of through a certified waste manager / recycler.
Ethylene glycol used in the Cooling Systems of the genset	The Glyco/water cooling system in GWE's Electric Gensets have a double skinned reservoir and has a spillage tray to prevent liquid spillage in the unlikely event of an incident. Used Glycol will be collected by a certified waste collector and recycler where the glycol will

	undergo a regeneration treatment by filtration. Sixty percent of the fluid is recycled to create new glycol and the rest is then sent to incinerators.
Batteries and Inverter Combinations	Lithium batteries have chemicals within them such as manganese, cobalt, and nickel which are harmful to the environment when not properly handled. When it is exposed to water supply systems and ecosystems in general, they end up contaminating the water and destroying aquatic life. When it reaches the end of their life cycle it must be collected by a specialist waste collector for recycling.



Renewable energy projects like GWE's Electric Gensets, play a crucial role in transitioning to a sustainable energy future. It offers cleaner alternatives to traditional fossil fuel-based power generation, helping to reduce greenhouse gas emissions and mitigate climate change.

## **6.1.OFFICE INFRASTRUCTURE**

An office complex with supporting infrastructure like parking areas, a canteen facility and ablution facilities will be constructed to be used by the staff working on the site.

## 7. APPROVALS OBTAINED

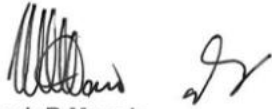
Walvis Bay Municipality approved the allocation of land (Portion 46 of Farm 58, Walvis Bay) for the proposed project. See below the Approval Letter from the Municipality of Walvis Bay:

	<h3>Municipality of Walvis Bay</h3> <p>Civic Centre • Nangolo Mbumba Drive • Private Bag 5017 • Walvis Bay • Namibia Phone +264 (0)64 201 3111 • Fax +264 (0)64 204 528 • www.walvisbaycc.org.na</p>												
<p>Ikhaya Somandla Family Trading Enterprises (Pty) Ltd P.O Box 27278 Windhoek Namibia</p>	<table border="1"><tr><td>Enquiries</td><td>Selma T Satchipia</td></tr><tr><td>Phone</td><td>+264 (0)64 201 3232</td></tr><tr><td>Fax</td><td>+264 (0)64</td></tr><tr><td>Cell</td><td></td></tr><tr><td>E-mail</td><td>ssatchipia@walvisbaycc.org.na</td></tr><tr><td>Date</td><td>13 September 2022</td></tr></table>	Enquiries	Selma T Satchipia	Phone	+264 (0)64 201 3232	Fax	+264 (0)64	Cell		E-mail	ssatchipia@walvisbaycc.org.na	Date	13 September 2022
Enquiries	Selma T Satchipia												
Phone	+264 (0)64 201 3232												
Fax	+264 (0)64												
Cell													
E-mail	ssatchipia@walvisbaycc.org.na												
Date	13 September 2022												
<p>Dear Sir/Madam</p> <p>Email Address: <a href="mailto:jalinks@ikhayasomandlagroup.com">jalinks@ikhayasomandlagroup.com</a></p> <p><b>Subject</b> Application for reservation of industrial land at the heavy industrial area behind Dune 7: Farm 58, for the construction of Green Energy Complex</p> <p>Ref. No. 17/28/2</p> <p>Previous correspondence in the above matter refers.</p> <p>We are pleased to inform you that Council at its Council Meeting which was held on 06 September 2022 resolved under item 11.8, <u>inter alia</u>, as follows:</p> <ol style="list-style-type: none"><li>"(1) That conditional approval be granted that ± 3,404,217 m<sup>2</sup> of Portion 46 of Remainder Farm 58 be reserved for Ikhaya Somandla Trading Enterprise (Pty) Ltd (the applicant) for the envisaged Green Energy Complex.</li><li>(2) That, the applicant attends to subdivision of ± 3,404,217 m<sup>2</sup> of Portion 46 of Remainder Farm 58 at own cost.</li><li>(3) That the applicant at its own risk and on its own cost conduct Environmental Impact Assessment (EIAs), Environmental Management Plans (EMPs), Risk Management Plans (RMPs) and any other statutory assessment, studies and processes, and obtain clearance from the Environmental Commissioner.</li><li>(4) That the applicant submits within twelve (12) months after this conditional approval the following:<ul style="list-style-type: none"><li>• The Environmental Clearance.</li><li>• Feasibility study whether the project is viable; and</li><li>• Financial capability that funds are available to start and complete the project.</li></ul></li><li>(5) That the method of sale/lease and all other conditions including but not limited to price be considered with final submission.</li><li>(6) That the applicant updates Council on the progress of the project every third month.</li></ol>													
	page 1 of 2												
Please address all correspondence to the Chief Executive Officer													

- (7) That once (2) and (4) above has been completed, a further comprehensive report with recommendations be submitted to Council for consideration.
- (8) That in the event the applicant fails to perform in accordance with (2), (3) and (4) above this conditional approval be regarded as null and void and of no further force and effect."

We request that Ikhaya Somandla Family Trading Enterprise (Pty) Ltd acknowledge receipt and accepts the conditions of this letter, within fourteen (14) days from date thereof.

Yours faithfully



**Jack R Manale**  
 Manager: Housing & Properties

## 8. BULK SERVICES AND INFRASTRUCTURE

The site is in the process of being serviced by the Walvis Bay Municipality although not all the required services are currently available. The following bulk services will be required to support the proposed project.

### 8.1.ACCESS

The Project Site will obtain access from Main Road 44 via the newly created intersection and a new road to be constructed which will also provide access to other developments on Farm 58.

The proposed access road is shown on the *Map* below:

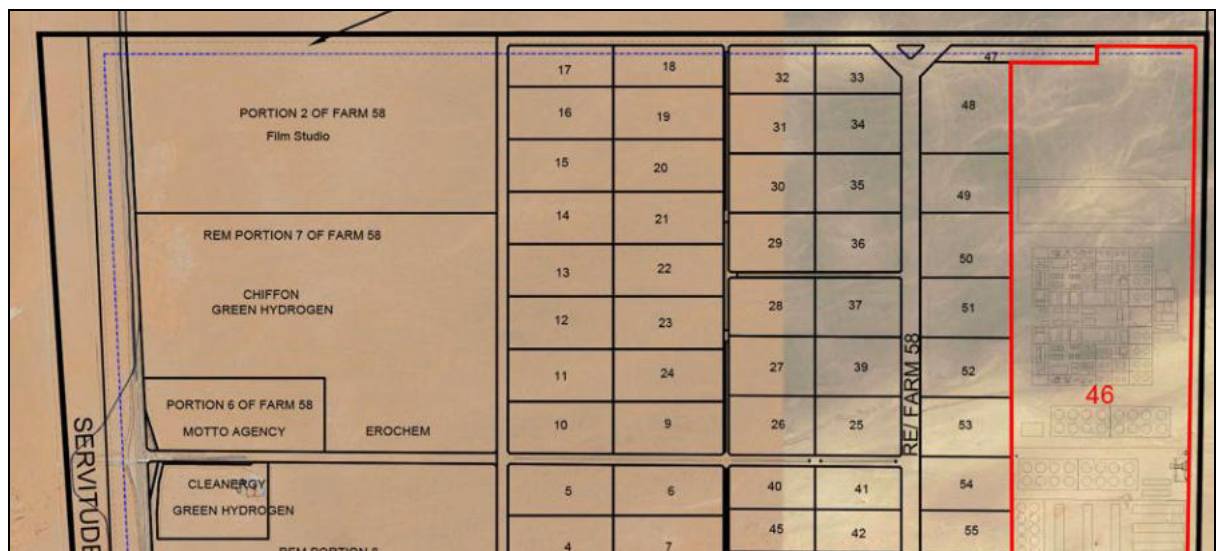


Figure 9: Plan showing the proposed access road to the site

## **8.2. WATER SUPPLY / REQUIREMENTS**

The Proposed new sites to be developed from the subdivision of the Remainder of Farm 58, including Portion 46, will obtain water from the NamWater pipeline and the Municipal water reticulation system to be developed for the development of the Remainder of Farm 58.

## **8.3. ELECTRICITY**

ErongoRED will provide power / electricity for the proposed tank farm to the development until the BESS system is up and running to supply power for the development.

## **8.4. SEWAGE DISPOSAL**

The sewage will be connected to the sewer system of the Walvis Bay Municipality. For the interim phase, conservancy tanks will be constructed to collect the domestic raw sewer, and trucks will pump the tanks and dispose the waste at the Municipal Sewage Works in town until Portion 46 is linked with the Municipal sewer network.

## **8.5. STORM WATER AND DRAINAGE**

A proper stormwater management plan will be developed to ensure that the infrastructure of the site is safeguarded against a 1:50 year flood risk. The stormwater management will be in accordance with Municipal Regulations.

## **8.6. SOLID WASTE**

Solid waste will be sorted on site into the various recyclables, stored in an enclosed area and collected for further sorting, processing and recycling by a professional registered waste management company.

## **8.7. FIRE PROTECTION**

The Proponent will have the necessary fire protection infrastructure / extinguishers as per the requirements. A Fire Protection Specialist will be contracted to introduce a proper fire protection plan with the required infrastructure and to oversee the annual auditing and maintenance of the infrastructure. The site will operate under fire control measures as per the Walvis Bay Fire Regulations.

## **9. APPROACH TO THE STUDY**

The assessment included the following activities:

a) Desktop sensitivity assessment

Literature, legislation, and guidance documents related to the natural environment and land use activities available on the portion and area in general were reviewed to determine potential environmental issues and concerns.

#### b) Site assessment (site visit)

The proposed project site and the immediate neighbourhood and surrounding area were assessed through several site visits to investigate the environmental parameters on site to enable further understanding of the potential impacts on site.

#### c) Public participation

The public was invited to give input, comments and opinions regarding the proposed project. Notices were placed in the Namibian, Namib Times and New Era (see Appendix) on two consecutive weeks (10, 15 and 17 May 2024) inviting public participation and comments on the proposed project. The closing date for any questions, comments, inputs or information was 31 May 2024. No objections were received; however comments were received – see attached the comments received.

A public meeting was held on 24 May 2024 at 10h00 at the Narraville Community Hall.

The closing date for any questions, comments, inputs or information for the Background Information Document was 7 June 2024.

#### d) Scoping

Based on the desk top study, site visit and public participation, the environmental impacts were determined in five categories: nature of project, expected duration of impact, geographical extent of the event, probability of occurring and the expected intensity. The findings of the scoping have been incorporated in the environmental impact assessment report below.

#### e) Environmental Management Plan (EMP)

To minimize the impact on the environment, mitigation measures have been identified to be implemented during planning, construction, and implementation. These measures have been included in the Environmental Management Plan to guide the planning, construction and operation of the development which can also be used by the relevant authorities to ensure that the project is planned, developed, and operated with the minimum impact on the environment.

## **10. ASSUMPTIONS AND LIMITATIONS**

It is assumed that the information provided by the proponent (ISF Trading Enterprises (Pty) Ltd) is accurate. The no-go option was not considered as the proposed project is in line with National Development Policies and Guidelines and as the activities planned on the site is aligned with the Harambee Initiative to support the oil and gas industry, to reduce Namibia's reliance on electricity and fuel imports and to support the industrialisation of the Country. No alternative even / site for the proposed project was examined as this site is the only site that was availed to the Proponent by Walvis Bay Municipality and as it is located in the area identified for the operation of heavy industrial use.

The site was visited several times and any happenings after this are not mentioned in this report. (The assessment was based on the prevailing environmental conditions and not on future happenings on the site.) However, it is assumed that there will be no significant changes to the proposed project, and the environment will not adversely be affected between the compilation of the assessment and the implementation of the proposed activities.

## **11. LEGAL AND POLICY REQUIREMENTS**

To protect the environment and achieve sustainable development, all projects, plans, programs and policies deemed to have adverse impacts on the environment require an EIA according to Namibian legislation. The administrative, legal and policy requirements to be considered during the Environmental Assessment are the following:

- The Namibian Constitution
- The Environmental Management Act (No. 7 of 2007)
- The Walvis Bay Town Planning Scheme
- Other Laws, Acts, Regulations and Policies

### **THE NAMIBIAN CONSTITUTION**

Article 95 of Namibia's constitution provides that:

"The State shall actively promote and maintain the welfare of the people by adopting, inter alia, policies aimed at the following:

Management of ecosystems, essential ecological processes and biological diversity of Namibia and utilization of living natural resources on a sustainable basis for the benefit of all Namibians, both present and future; in particular, the Government shall provide measures against the dumping or recycling of foreign nuclear and toxic waste on Namibian territory." This article recommends that a relatively high level of environmental protection is called for in respect of pollution control and waste management.

Article 144 of the Namibian Constitution deals with environmental law and it states:

"Unless otherwise provided by this Constitution or Act of Parliament, the general rules of public international agreements binding upon Namibia under this Constitution shall form part of the law of Namibia". This article incorporates international law, if it conforms to the Constitution, automatically as "law of the land". These include international agreements, conventions, protocols, covenants, charters, statutes, acts, declarations, concords, exchanges of notes, agreed minutes, memoranda of understanding, and agreements (Ruppel & Ruppel-Schlichting, 2013). It is therefore important that the international agreements and conventions are considered (see section 4.9).

In considering these environmental rights, ISF Trading Enterprises (Pty) Ltd (the Proponent) should consider the following in devising an action plan in response to these articles:

- Implement a “zero-harm” policy at that would guide decisions.
- Ensure that no management practice or decision result in the degradation of future natural resources.
- Take a decision on how this part of the Constitution will be implemented as part of the Proponent’s Environmental Control System (ECS).

## **ENVIRONMENTAL MANAGEMENT ACT (NO. 7 OF 2007)**

The Environmental Impact Assessment Regulations (GN 30 in GG 4878 of 6 February 2012) of the Environmental Management Act (No. 7 of 2007) that came into effect in 2012 requires/recommends that an Environmental Impact Assessment and an Environmental Management Plan (EMP) be conducted for the following listed activities to obtain an Environmental Clearance Certificate:

### **ENERGY GENERATION, TRANSMISSION AND STORAGE ACTIVITIES**

*The construction of facilities for:*

*(a) the generation of electricity.*

*(b) the transmission and supply of electricity.*

Cumulative impacts associated with the development must be included as well as public consultation. The Act further requires all major industries and mines to prepare waste management plans and present these to the local authorities for approval.

The Act, Regulations, Procedures and Guidelines have integrated the following sustainability principles. These need to be given due consideration, particularly to achieve proper waste management and pollution control:

#### **Cradle to Grave Responsibility**

This principle provides that those who handle or manufacture potentially harmful products must be liable for their safe production, use and disposal and that those who initiate potentially polluting activities must be liable for their commissioning, operation and decommissioning.

#### **Precautionary Principle**

It provides that if there is any doubt about the effects of a potentially polluting activity, a cautious approach must be adopted.

#### **The Polluter Pays Principle**

A person who generates waste or causes pollution must, in theory, pay the full costs of its treatment or of the harm, which it causes to the environment.

#### **Public Participation and Access to Information**

In the context of environmental management, citizens must have access to information and the right to participate in decisions making.

## CONCLUSION AND IMPACT

Some of the surrounding erven have been cleared from vegetation and structures have been constructed on the sites or are in the process of being constructed. The proposed activity will thus fit in with the surrounding activities and not have a negative impact on the prevailing environment. It will be ensured that all protected plant species will be retained where possible.

## THE WALVIS BAY TOWN PLANNING SCHEME

Walvis Bay Town Planning Amendment Scheme No. 35 (7 December 2015) applies to the area as indicated on the scheme maps and corresponds with the Townlands Diagram for Walvis Bay Town and Townlands. Portion 46, Walvis Bay falls within the area of the Scheme.

The general purpose of this Scheme is the coordinated and harmonious development of the area of Walvis Bay (including, where necessary, the reconstruction and redevelopment of any part which has already been subdivided whether there are buildings on it or not) in such a way as will most effectively tend to promote health, safety, order, amenity, convenience and general welfare as well as efficiency and economy in the process of development and improvement of communications, and where it is expedient in order to promote proper planning or development, may provide for the suspending the operation of any provision of law or any bylaw or regulation made under such law, in so far as such provision is similar to or inconsistent with any of the provisions so the Scheme.

## CONCLUSION AND IMPACT

The Town Planning Scheme confirms that Portion 46, Walvis Bay may be used for the Green Energy Complex as per the definition of 'industrial' use.

## OTHER LAWS, ACTS, REGULATIONS AND POLICIES

The laws, acts, regulations, and policies listed below have also been considered during the Environmental Assessment.

*Table 1: Laws, Acts, Regulations and Policies*

Laws, Acts, Regulations & Policies consulted:		
<b>Electricity Act (No. 4 of 2007)</b>	In accordance with the Electricity Act (No. 4 of 2007) which provides for the establishment of the Electricity Control Board and provide for its powers and functions; to provide for the requirements and conditions for obtaining licenses for the provision of electricity; to provide for the	The Proponent must abide to the Electricity Act.

	<p>powers and obligations of licenses; and to provide for incidental matters: the necessary permits and licenses will be obtained.</p>	
<p><b>Pollution Control and Waste Management Bill (guideline only)</b></p>	<p>The <b>Pollution Control and Waste Management Bill</b> is currently in preparation and is therefore included as a guideline only. Of reference to the mining, Parts 2, 7 and 8 apply. Part 2 provides that no person shall discharge or cause to be discharged, any pollutant to the air from a process except under and in accordance with the provisions of an air pollution license issued under section 23. Part 2 also further provides for procedures to be followed in license application, fees to be paid and required terms of conditions for air pollution licenses. Part 7 states that any person who sells, stores, transports or uses any hazardous substances or products containing hazardous substances shall notify the competent authority, in accordance with sub-section (2), of the presence and quantity of those substances. The competent authority for the purposes of section 74 shall maintain a register of substances notified in accordance with that section and the register shall be maintained in accordance with the provisions. Part 8 provides for emergency preparedness by the person handling hazardous substances, through emergency response plans.</p>	<p>The Proponent must adhere to the Pollution Control and Waste Management Bill.</p>
<p><b>Water Resources Management Act</b></p>	<p>The <b>Water Resources Management Act (No. 11 of 2013)</b> stipulates conditions that ensure effluent that is produced to be of a certain standard. There should also be controls on the disposal of sewage, the purification of effluent, measures should be taken to ensure the prevention of surface and</p>	<p>The Act must be consulted. Fresh water abstraction and waste-water discharge permits should be obtained when required.</p>

	groundwater pollution and water resources should be used in a sustainable manner.	
<b>Solid and Hazardous Waste Management Regulations: Local Authorities 1992</b>	Provides for management and handling of industrial, business and domestic waste.	The Proponent must abide to the solid waste management provisions.
<b>Hazardous Substances Ordinance (No. 14 of 1974)</b>	The <b>Ordinance</b> applies to the manufacture, sale, use, disposal and dumping of hazardous substances, as well as their import and export and is administered by the Minister of Health and Social Welfare. Its primary purpose is to prevent hazardous substances from causing injury, ill-health or the death of human beings.	The Proponent must abide to the Ordinance's provisions.
<b>Atmospheric Pollution Prevention Ordinance of Namibia (No. 11 of 1976)</b>	Part 2 of the <b>Ordinance</b> governs the control of noxious or offensive gases. The Ordinance prohibits anyone from carrying on a scheduled process without a registration certificate in a controlled area. The registration certificate must be issued if it can be demonstrated that the best practical means are being adopted for preventing or reducing the escape into the atmosphere of noxious or offensive gases produced by the scheduled process.	The proponent should adhere to the stipulations of the Atmospheric Pollution Prevention Ordinance.
<b>Nature Conservation Ordinance</b>	The <b>Nature Conservation Ordinance (No. 4 of 1975)</b> covers game parks and nature reserves, the hunting and protection of wild animals, problem animals, fish and indigenous plant species. The Ministry of Environment, Forestry and Tourism (MEFT) administer it and provides for the establishment of the Nature Conservation Board.	The proposed project implementation is not located in a demarcated conservation area, national park or unique environments.
<b>Forestry Act</b>	The <b>Forestry Act (No. 12 of 2001)</b> specifies that there be a general protection of the receiving and surrounding environment. The protection of natural vegetation is of great importance,	No removal of protected tree species or removal of mature trees should happen. The Ministry of Environment, Forestry and Tourism should be consulted when required.

	the Forestry Act especially stipulates that no living tree, bush, shrub or indigenous plants within 100m from any river, stream or watercourse, may be removed without the necessary license.	
<b>EU Timber Regulation: FSC (2013)</b>	Forest Stewardship Council (FSC) came into effect in March 2013, with the aim of preventing sales of illegal timber and timber products in the EU market. Now, any actor who places timber or timber products on the market for the first time must ensure that the timber used has been legally harvested and, where applicable, exported legally from the country of harvest.	The Proponent is advised to adhere to the regulation.
<b>Labour Act</b>	The <b>Labour Act (No. 11 of 2007)</b> contains regulations relating to the Health, Safety and Welfare of employees at work. These regulations are prescribed for among others safety relating to hazardous substances, exposure limits and physical hazards. Regulations relating to the Health and Safety of Employees at Work are promulgated in terms of the Labour Act 6 of 1992 (GN156, GG1617 of 1 August 1997).	The proponent and contractor should adhere to the Labour Act.
<b>Public and Environmental Health Act</b>	The Public and Environmental Health Act (No. 1 of 2015) provides with respect to matters of public health in Namibia. The objects of this Act are to: (a) promote public health and wellbeing; (b) prevent injuries, diseases and disabilities; (c) protect individuals and communities from public health risks; (d) encourage community participation in order to create a healthy environment; and (e) provide for early detection of diseases and public health risks.	The proponent and contractor should adhere to the Public and Environmental Health Act.
<b>National Heritage Act (No. 27 of 2004)</b>	All protected heritage resources discovered need to be reported immediately to the National Heritage Council (NHC) and require a permit from the NHC before it may be relocated. This should be applied from the NHC.	The National Heritage Council should be consulted when required.

<p><b>National Monuments Act of Namibia (No. 28 of 1969) as amended until 1979</b></p>	<p>No person shall destroy, damage, excavate, alter, remove from its original site or export from Namibia:  (a) any meteorite or fossil; or  (b) any drawing or painting on stone or a petroglyph known or commonly believed to have been executed by any people who inhabited or visited Namibia before the year 1900 AD; or  (c) any implement, ornament or structure known or commonly believed to have been used as a mace, used or erected by people referred to in paragraph; or  (d) the anthropological or archaeological contents of graves, caves, rock shelters, middens, shell mounds or other sites used by such people; or  (e) any other archaeological or palaeontological finds, material or object; except under the authority of and in accordance with a permit issued under this section.</p>	<p>The proposed site for development is not within any known monument site both movable or immovable as specified in the Act, however in such an instance that any material or sites or archeologic importance are identified, it will be the responsibility of the developer to take the required route and notify the relevant commission.</p>
<p><b>Public Health Act (No. 36 of 1919)</b></p>	<p>Under this act, in section 119: “No person shall cause a nuisance or shall suffer to exist on any land or premises owned or occupied by him or of which he is in charge any nuisance or other condition liable to be injurious or dangerous to health.”</p>	<p>The proponent will ensure that all legal requirements of the project in relation to protection of the health of their employees and surrounding residents is protected and will be included in the EMP.  Relevant protective equipment shall be provided for employees in construction. The development shall follow requirements and specifications in relation to water supply and sewerage handling and solid waste management so as not to threaten public health of future residents on this piece of land.</p>
<p><b>Soil Conservation Act (No. 76 of 1969)</b></p>	<p>The objectives of this Act are to:  Make provisions for the combating and prevention of soil erosion;  Promote the conservation, protection and improvement of the soil, vegetation, sources and</p>	<p>Only the area required for the operations should be cleared from vegetation to ensure the minimum impact on the soil through clearance for construction.</p>

	resources of the Republic;	
<b>Air Quality Act (NO. 39 of 2004)</b>	The <b>Air Quality Act (No. 39 of 2004)</b> intends to provide for national norms and standards regulating air quality monitoring, management and control by all spheres of government; for specific air quality measures; and for matters incidental thereto.	The proponent and contractor should adhere to the Air Quality Act.
<b>Vision 2030 and National Development Plans</b>	Namibia's overall development ambitions are articulated in the Nation's Vision 2030. At the operational level, five-yearly national development plans (NDP's) are prepared in extensive consultations led by the National Planning Commission in the Office of the President. Currently the Government has so far launched a 4th NDP which pursues three overarching goals for the Namibian nation: high and sustained economic growth; increased income equality; and employment creation.	The proposed project is an important element in employment creation.

#### **CONCLUSION AND IMPACT**

It is believed the above administrative, legal and policy requirements which specifically guide and governs development will be followed and complied with in the planning, implementation and operations of the activity.

A flowchart indicating the entire EIA process is shown in the *Figure* below.

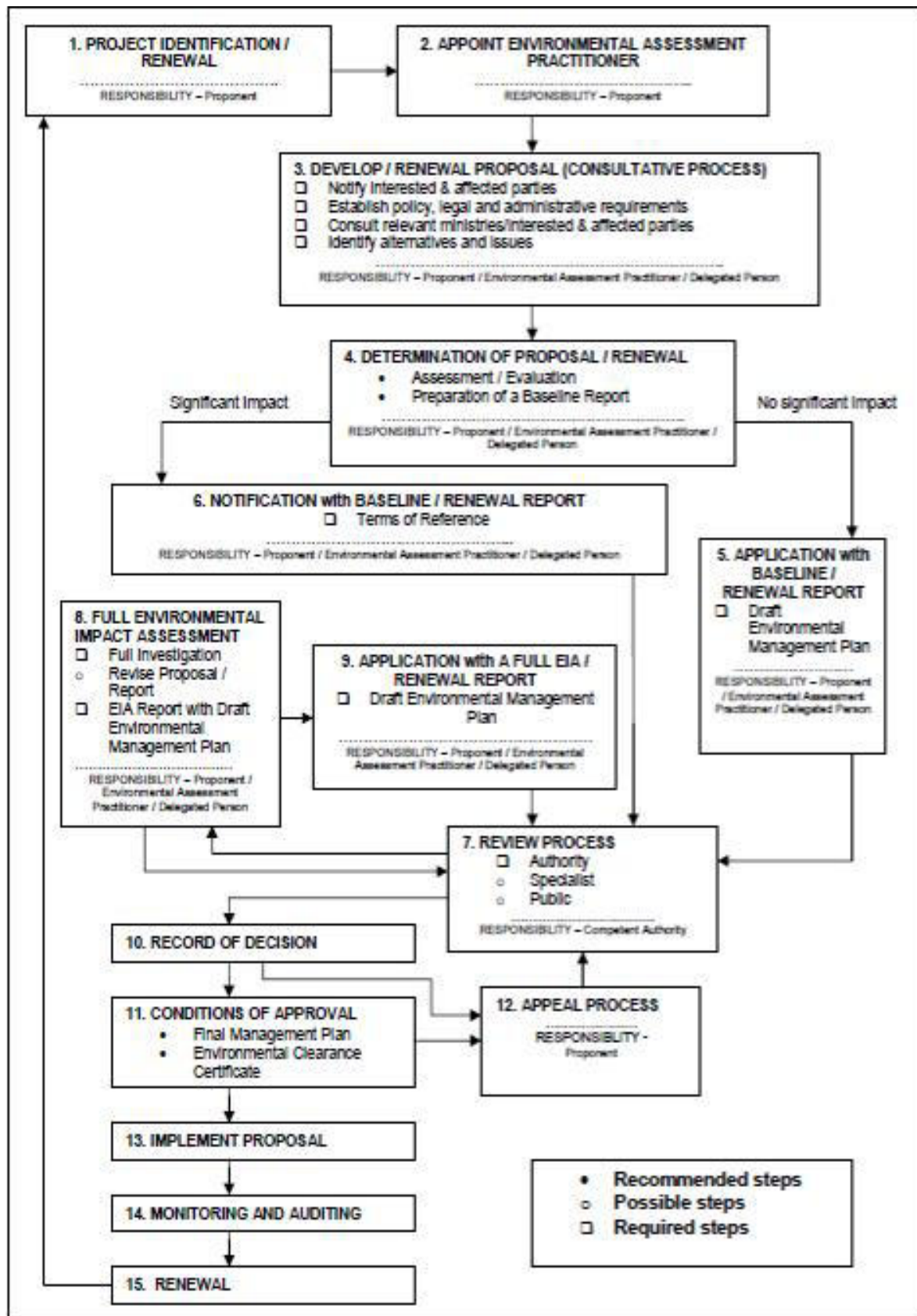


Figure 10: Flowchart of the Impact Process

## 12. AFFECTED RECEIVING ENVIRONMENT

### 12.1. BIODIVERSITY AND VEGETATION

Portion 46, Walvis Bay is located within the already established industrial area. The habitat for fauna is therefore fragmented. There is no noteworthy fauna or flora present at the site.

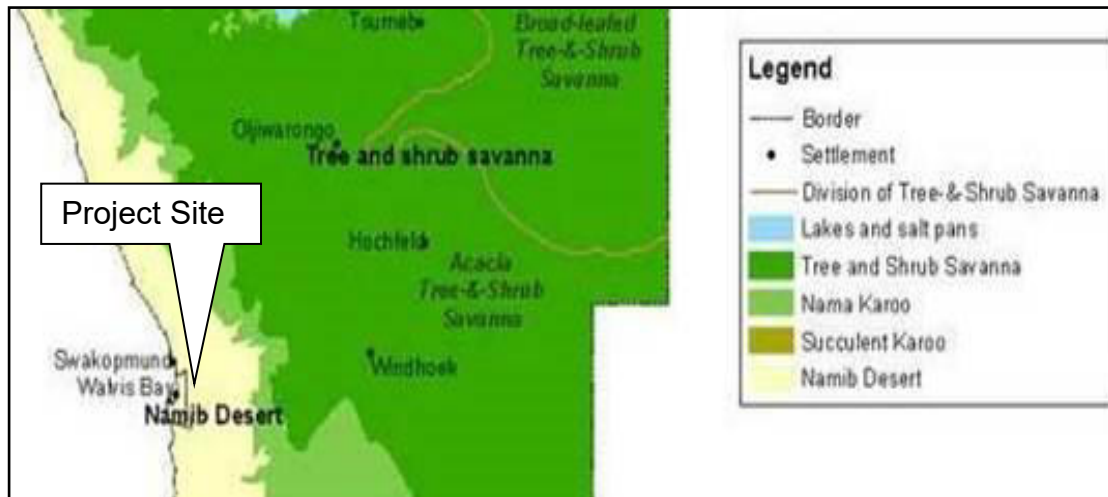


Figure 11: Biomes in Namibia (Atlas of Namibia, 2002)

Only the necessary plants/vegetation will be removed for the construction phase. The natural characteristics of the project site namely the vegetation clearance and the destruction of habitats is expected to further on have a low impact on the environment before the mitigation measures are taken and after the mitigation measures are taken, the impact will be very low.

#### CONCLUSION AND IMPACT

The activities will have a low impact on vegetation, shrubs and trees.

### 12.2. GEOLOGY AND SOILS

Groundwater is not abstracted for human consumption in this area of Walvis Bay. The Municipality of Walvis Bay currently obtains fresh/potable water from NamWater, which source water from the Kuiseb Water Supply Scheme and other sources. See Map below:



## 12.5. SOCIO ECONOMIC ENVIRONMENT

The proposed development falls within the Erongo Region with a population of 150,400 and a density of 2.4 people/km<sup>2</sup> (*National Planning Commission, 2012*). The Erongo Region shows promise in terms of socio-economic factors. It has one of the lowest unemployment rates of all regions in Namibia (22.6%), and only 5.1% of households in the Erongo Region are considered poor. Furthermore, 97% of the population is considered literate and 72%, the highest for any Namibian region, has some form of education at secondary level.

From figures provided by the Municipality, it is projected that the population of Walvis Bay will grow from the current 79 500 (2014) to 180 000 by 2030. The population will thus more than double in 16 years' time. The current growth rate is 4.7%.

The largest part of Walvis Bay's population resides in the Kuisebmond area ( $\pm 33\,790$ ) and secondly in Narraville ( $\pm 6668$ ) (2012 figures). This high growth is anticipated to expected high influx of people due to the expansion of port, establishment of many industries etc.

The National unemployment rate is 34% although the Erongo Region has an unemployment rate of 23%. The fishing industry is the major employer of low skilled workers on a permanent and seasonal basis. The total employment of this sector is estimated at 2.2% of the total Namibian workforce (*Namibia Statistics Agency, 2009/2010*). The major constraints of industrial development are the lack of sufficient water supply, the lack of a large enough local market and the excessive focus on the fishing industry. Most industries that exist at the coast are either secondary or tertiary suppliers to the fishing industry or linked to port-related activities.

Walvis Bay will benefit from more employment opportunities, skills and technology transfer during construction and operations of the development. The spending power of locals is likely to increase because of employment during the construction and operational phase.

### **The project can be considered to be in the Public Interest of Namibia and the SADC Region as it will:**

- Generate significant financial contribution in terms of local infrastructure development and related expenditures (including 12,000 plus employment opportunities during construction) to install the deep-water North-port and energy complex in Walvis Bay.
- Add 2,120MW, and more, of new electric power generation for the refinery and the local grid.
- Provide 3,500 plus long-term permanent employment opportunities as well as continuous skills development and professional industry-specific qualified education, whilst in access of 5,500 indirect employment opportunities will be created, and clean water will be produced.
- Create an economic multiplier effect from new industrial investment and enable cost savings by using locally produced refined energy products instead of expensive imports.
- Based on the modular design, early start-up, lower operating costs, integrated power, fuel storage and additives and desalination plants and a business

model to service, the project will produce adequate financial results to achieve profitable operations within 5 years.

- Revenue will start at the beginning of Year 3 with the electricity, additives, fuel storage, housing development, reefer and Alugas, then increase in Year 4 with the refinery. It is envisaged that there will be a further increase beginning in late Year 5 as expansion gets implemented.

<b>Financial Projections (US\$)</b>					
US\$ (Million)					
	FIRST YEAR OF OPERATION	YEAR 2	YEAR 3	YEAR 4	YEAR 5
REVENUE	1,742	5,225	6,270	8,708	10,450
IRR	0%	-23%	-6%	5%	12%
EQUITY	20,396	20,396	20,396	20,396	20,396
NET INCOME	601	1,685	1,986	2,630	3,132
ROI	3%	8%	10%	13%	15%

NOTE: Above indicated projections for the first 5 years of operations are based on only 2 major components of the Project, (Oil Refinery and Electricity Generation).

Figure 13: Financial Projections

The proposed development will not have a negative impact on the social environment as it is in line with the current uses in this area. It will thus have a positive impact on the social environment. The socio-economic characteristics of the area are continuously changing as more economic activities are established within the area.

#### CONCLUSION AND IMPACT

The activities will have a positive impact on the community since employment will be created.

## 12.6. CLIMATE

A summary of climate conditions is presented below:

Table 1: Climate Data

Classification of climate	Desert
Precipitation	0-50
Variation in annual rainfall (%)	<100
Average annual evaporation (mm/a)	2400-2600
Water deficit (mm/a)	1701-1900
Fog	Approximately 900 hours of fog per year
Temperature	Average maximum: Between 24°C in March/April and 19.3°C in September Average minimum: Between 16.5°C in February and 9°C in August Average annual >16°C

Strong winds in the coastal areas may aggravate dust impacts during the construction phase. The structures to be constructed must meet all prescribed Municipal requirements and therefore should not pose any environmental threat due to Walvis Bay's climatic conditions.

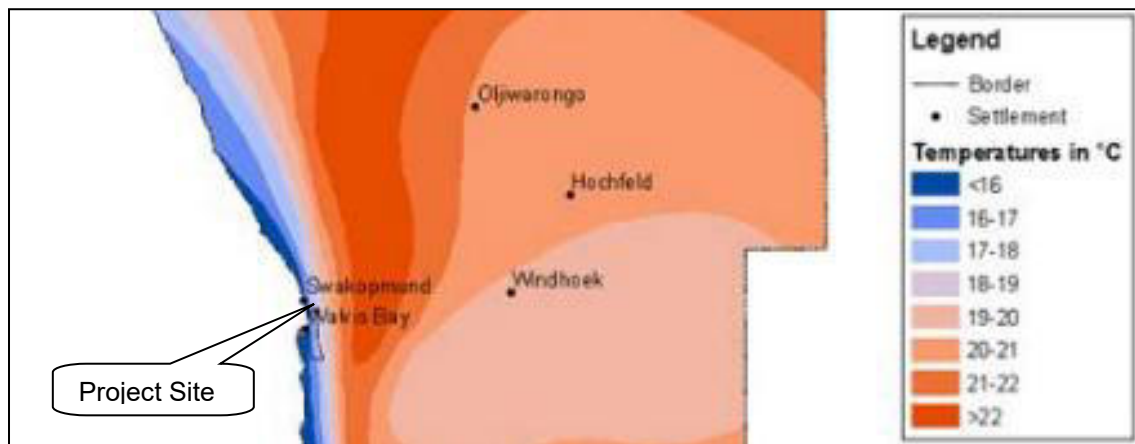


Figure 14: Average annual temperatures in Namibia (Atlas of Namibia, 2002)

#### CONCLUSION AND IMPACT

The activities will not have an impact on the climate.

### 12.7. CULTURAL HERITAGE

The proposed project site is not known to have any historical significance prior to or after Independence in 1990. The specific area does not have any National Monuments and the specific site has no record of any cultural or historical importance or on-site resemblance of any nature. No graveyard or related article was found on the site.

#### CONCLUSION AND IMPACT

The activities will have a low impact on cultural heritage.

### 13. IMPACT ASSESSMENT AND EVALUATION

The Environmental Impact Assessment sets out potential positive and negative environmental impacts associated with the proposed project site. The following assessment methodology will be used to examine each impact identified, see *Table* below:

Table 2: Impact Evaluation Criterion (DEAT 2006)

Criteria	Rating (Severity)	
Impact Type	+	Positive

	<b>O</b>	No Impact
	-	Negative
<b>Significance of impact being either</b>	<b>L</b>	Low (Little or no impact)
	<b>M</b>	Medium (Manageable impacts)
	<b>H</b>	High (Adverse impact)

<b>Probability:</b>	<b>Duration:</b>
5 – Definite/don't know	5 - Permanent
4 – Highly probable	4 – Long-term (impact ceases)
3 – Medium probability	3 – Medium term (5 – 15 years)
2 – Low probability	2 – Short-term (0 – 5 years)
1 – Improbable	1 - Immediate
0 - None	
<b>Scale:</b>	<b>Magnitude:</b>
5 – International	10 – Very high/don't know
4 – National	8 - High
3 – Regional	6 - Moderate
2 – Local	4 - Low
1 – Site only	2 - Minor
	0 - None

The impacts on the receiving environment are discussed in the paragraphs below:

## **13.1. IMPACTS DURING THE CONSTRUCTION ACTIVITY**

Some of the impacts that the project will have on the environment includes water will be used for the construction and operation activities, electricity will be used, a sewer system will be constructed and wastewater will be produced on the site that will have to be handled.

### **13.1.1. WATER USAGE**

Water is a scarce resource in Namibia and therefore water usage should be monitored and limited in order to prevent unnecessary wastage. The proposed project might make use of water in its construction phase and operations.

### Impact Evaluation

Aspect	Impact Type	Scale	Duration	Magnitude	Probability	Significance	
						Unmitigated	Mitigated
Water	-	2	2	4	2	M	L

### 13.1.2. ECOLOGICAL IMPACTS

The proposed infrastructure will be constructed in a semi disturbed natural area which is partly covered with vegetation. Special care should be taken to limit the destruction or damage of the vegetation. However, impacts on fauna and flora are expected to be minimal. Disturbance of areas outside the designated working zone is not allowed.

### Impact Evaluation

Aspect	Impact Type	Scale	Duration	Magnitude	Probability	Significance	
						Unmitigated	Mitigated
Ecology	-	1	2	4	2	M	L

### 13.1.3. DUST POLLUTION AND AIR QUALITY

Dust generated during the transportation of building materials; construction and installation of bulk services, and problems thereof are expected to be low and site specific. Dust is expected to be worse during the winter months when strong winds occur. Release of various particulates from the site during the construction phase and exhaust fumes from vehicles and machinery related to the construction of bulk services are also expected to take place. Dust is regarded as a nuisance as it reduces visibility, affects the human health and retards plant growth. It is recommended that regular dust suppression be included in the construction activities, when dust becomes an issue.

### Impact evaluation

Aspect	Impact Type	Scale	Duration	Magnitude	Probability	Significance	
						Unmitigated	Mitigated
Dust & Air Quality	-	2	2	2	2	M	L

### 13.1.4. NOISE IMPACT

An increase of ambient noise levels at the proposed site is expected due to the construction activities. Noise pollution due to heavy-duty equipment and machinery might be generated. It is not expected that the noise generated during construction

will impact any third parties due to the distance of the neighbouring activities. Ensure all mufflers on vehicles are in full operational order; and any audio equipment should not be played at levels considered intrusive by others. The construction staff should be equipped with ear protection equipment.

#### Impact evaluation

Aspect	Impact Type	Scale	Duration	Magnitude	Probability	Significance	
						Unmitigated	Mitigated
Noise	-	2	1	4	2	M	L

### 13.1.5. HEALTH, SAFETY AND SECURITY

The safety, security and health of the labour force, employees and general public are of great importance. Workers should be orientated with the maintenance of safety and health procedures and they should be provided with PPE (Personal Protective Equipment). A health and safety officer should be employed to manage, coordinate and monitor risk and hazard and report all health and safety related issues in the workplace.

Safety issues could arise from the earthmoving equipment and tools that will be used on site during the construction phase. This increases the possibility of injuries and the contractor must ensure that all staff members are made aware of the potential risks of injuries on site. The presence of equipment lying around on site may also encourage criminal activities (theft).

Sensitize operators of earthmoving equipment and tools to switch off engines of vehicles or machinery not being used. The contractor is advised to ensure that the team is equipped with first aid kits and that these are available on site, at all times. Workers should be equipped with adequate personal protective gear and properly trained in first aid and safety awareness.

No open flames, smoking or any potential sources of ignition should be allowed at the project location. Signs such as 'NO SMOKING' must be prominently displayed in parts where inflammable materials are stored on the premises. Proper barricading and/or fencing around the site especially trenches for pipes and drains should be erected to avoid entrance of animals and/or unauthorized persons. Safety regulatory signs should be placed at strategic locations to ensure awareness. Adequate lighting within and around the construction locations should be erected, when visibility becomes an issue.

#### Impact evaluation

Aspect	Impact Type	Scale	Duration	Magnitude	Probability	Significance	
						Unmitigated	Mitigated
Safety & Security	-	1	2	4	2	M	L

### 13.1.6. CONTAMINATION OF GROUNDWATER

Care must be taken to avoid contamination of soil and groundwater. Use drip trays when doing maintenance on machinery. Maintenance should be done on dedicated areas with linings or concrete flooring. The risk can be lowered further through proper training of staff. All spills must be cleaned up immediately. Excavations should be backfilled and sealed with appropriate material, if it is not to be used further.

#### Impact Evaluation

Aspect	Impact Type	Scale	Duration	Magnitude	Probability	Significance	
						Unmitigated	Mitigated
Groundwater	-	2	2	2	2	M	L

### 13.1.7. SEDIMENTATION AND EROSION

Vegetation is stabilizing the area against wind and water erosion. Vegetation clearance and creation of impermeable surfaces could result in erosion in areas across the proposed area. The clearance of vegetation will further reduce the capacity of the land surface to slow down the flow of surface water, thus decreasing infiltration, and increasing both the quantity and velocity of surface water runoff. The proposed construction activities will increase the number of impermeable surfaces and therefore decrease the amount of groundwater infiltration. As a result, the amount of storm water during rainfall events could increase. If proper storm water management measures are not implemented this will impact negatively on the water courses close to the site.

#### Impact Evaluation

Aspect	Impact Type	Scale	Duration	Magnitude	Probability	Significance	
						Unmitigated	Mitigated
Erosion and Sedimentation	-	1	2	4	2	M	L

### 13.1.8. GENERATION OF WASTE

This can be in a form of rubble, cement bags, pipe and electrical wire cuttings. The waste should be gathered and stored in enclosed containers to prevent it from being blown away by the wind. Contaminated soil due to oil leakages, lubricants and grease from the construction equipment and machinery may also be generated during the construction phase.

The oil leakages, lubricants and grease must be addressed. Contaminated soil must be removed and disposed of at a hazardous waste landfill. The contractor must provide containers on-site, to store any hazardous waste produced. Regular

inspection and housekeeping procedure monitoring should be maintained by the contractor.

#### Impact Evaluation

Aspect	Impact Type	Scale	Duration	Magnitude	Probability	Significance	
						Unmitigated	Mitigated
Waste	-	1	2	4	2	M	L

### 13.1.9. CONTAMINATION OF SURFACE WATER

Contamination of surface water might occur through oil leakages, lubricants and grease from the equipment and machinery during the installation, construction and maintenance of bulk services at the site. Oil spills may form a film on water surfaces in the nearby streams causing physical damage to water-borne organisms.

Machinery should not be serviced at the construction site to avoid spills. All spills should be cleaned up as soon as possible. Hydrocarbon contaminated clothing or equipment should not be washed within 25m of any surface water body.

#### Impact Evaluation

Aspect	Impact Type	Scale	Duration	Magnitude	Probability	Significance	
						Unmitigated	Mitigated
Surface water	-	2	2	4	3	M	L

### 13.1.10. TRAFFIC AND ROAD SAFETY

All drivers of delivery vehicles and construction machinery should have the necessary driver's licenses and documents to operate these machines. Speed limit warning signs must be erected to minimise accidents. Heavy-duty vehicles and machinery must be tagged with reflective signs or tapes to maximize visibility and avoid accidents.

#### Impact Evaluation

Aspect	Impact Type	Scale	Duration	Magnitude	Probability	Significance	
						Unmitigated	Mitigated
Traffic	-	2	2	4	3	M	L

### 13.1.11. FIRES AND EXPLOSIONS

There should be sufficient water available for firefighting purposes. Ensure that all fire-fighting devices are in good working order and they are serviced. All personnel have to be trained about responsible fire protection measures and good

housekeeping such as the removal of flammable materials on site. Regular inspections should be carried out to inspect and test firefighting equipment by the contractor.

#### Impact Evaluation

Aspect	Impact Type	Scale	Duration	Magnitude	Probability	Significance	
						Unmitigated	Mitigated
Fires and Explosions	-	2	2	4	2	M	L

### 13.1.12. SENSE OF PLACE

The placement, design and construction of the proposed infrastructure should be as such as to have the least possible impact on the natural environment. The proposed activities will not have a large/negative impact on the sense of place in the area since it will be constructed in a manner that will not affect the neighbouring erven / portions and it will not be visually unpleasing.

#### Impact Evaluation

Aspect	Impact Type	Scale	Duration	Magnitude	Probability	Significance	
						Unmitigated	Mitigated
Nuisance Pollution	-	1	1	2	2	M	L

## 13.2. IMPACTS DURING THE OPERATIONAL PHASE

### 13.2.1. ECOLOGICAL IMPACTS

Staff and visitors should only make use of walkways and existing roads to minimise the impact on vegetation. Minimise the area of disturbance by restricting movement to the designated working areas during maintenance and drives.

#### Impact Evaluation

Aspect	Impact Type	Scale	Duration	Magnitude	Probability	Significance	
						Unmitigated	Mitigated
Ecology Impacts	-	1	2	4	2	M	L

### 13.2.2. DUST POLLUTION AND AIR QUALITY

Vehicles transporting goods and staff will contribute to the release of hydrocarbon vapours, carbon monoxide and sulphur oxides into the air. Possible release of sewer odour, due to sewer system failure of maintenance might also occur. All

maintenance of bulk services and infrastructure at the project site has to be designed to enable environmental protection.

#### Impact Evaluation

Aspect	Impact Type	Scale	Duration	Magnitude	Probability	Significance	
						Unmitigated	Mitigated
Dust & Air Quality	-	2	2	4	4	M	L

### 13.2.3. CONTAMINATION OF GROUNDWATER

Spillages might also occur during maintenance of the sewer system. This could have impacts on groundwater especially in cases of large sewer spills. Proper containment should be used in cases of sewerage system maintenance to avoid any possible leakages. Oil and chemical spillages may have a health impact on groundwater users. Potential impact on the natural environment from possible polluted groundwater also exists.

#### Impact Evaluation

Aspect	Impact Type	Scale	Duration	Magnitude	Probability	Significance	
						Unmitigated	Mitigated
Groundwater contamination	-	2	2	4	2	M	L

### 13.2.4. GENERATION OF WASTE

Household waste from the activities at the site and from the staff working at the site will be generated. This waste will be collected, sorted to be recycled and stored in on site for transportation and disposal at an approved landfill site.

#### Impact Evaluation

Aspect	Impact Type	Scale	Duration	Magnitude	Probability	Significance	
						Unmitigated	Mitigated
Waste Generation	-	1	2	2	2	M	L

### 13.2.5. FAILURE IN RETICULATION PIPELINES

There may be a potential release of sewage, stormwater or water into the environment due to pipeline/system failure. As a result, the spillage could be released into the environment and could potentially be health hazard to surface and groundwater. Proper reticulation pipelines and drainage systems should be installed. Regular bulk services infrastructure and system inspection should be conducted.

### Impact Evaluation

Aspect	Impact Type	Scale	Duration	Magnitude	Probability	Significance	
						Unmitigated	Mitigated
Failure of Reticulation Pipeline	-	1	1	4	2	M	L

### 13.2.6. FIRES AND EXPLOSIONS

Food will be prepared on gas fired stoves. There should be sufficient water available for firefighting purposes. Ensure that all fire-fighting devices are in good working order and are serviced. All personnel have to be trained about responsible fire protection measures and good housekeeping such as the removal of flammable materials on site. Regular inspections should be carried out to inspect and test firefighting equipment by the contractor.

### Impact Evaluation

Aspect	Impact Type	Scale	Duration	Magnitude	Probability	Significance	
						Unmitigated	Mitigated
Fires and Explosions	-	2	1	4	2	M	L

### 13.2.7. HEALTH, SAFETY AND SECURITY

The safety, security and health of the labour force, employees and neighbours are of great importance, workers should be orientated with the maintenance of safety and health procedures and they should be provided with PPE (Personal Protective Equipment). Workers should be warned not to approach or chase any wild animals occurring on the site. No open flames, smoking or any potential sources of ignition should be allowed at the project location. Signs such as 'NO SMOKING' must be prominently displayed in parts where inflammable materials are stored on the premises.

### Impact Evaluation

Aspect	Impact Type	Scale	Duration	Magnitude	Probability	Significance	
						Unmitigated	Mitigated
Safety & Security	-	1	2	4	2	M	L

### 13.3. CUMULATIVE IMPACTS

These are impacts on the environment, which results from the incremental impacts of the construction and operation of the proposed project when added to other past, present, and reasonably foreseeable future actions regardless of what person undertakes such other actions. Cumulative impacts can result from individually minor

but collectively significant actions taking place over a period of time. In relation to an activity, it means the impact of an activity that in it may not become significant when added to the existing and potential impacts resulting from similar or diverse activities or undertakings in the area.

Possible cumulative impacts associated with the proposed project include sewer damages/maintenance, vegetation and animal disturbance, uncontrolled traffic and destruction of the natural environment. These impacts could become significant especially if it is not properly supervised and controlled. This could collectively impact on the environmental conditions in the area. Cumulative impacts could occur in both the operational and the construction phase.

#### Impact Evaluation

Aspect	Impact Type	Scale	Duration	Magnitude	Probability	Significance	
						Unmitigated	Mitigated
Cumulative Impacts	-	1	3	4	3	M	L

## 14. ENVIRONMENTAL MANAGEMENT PLAN

The Environmental Management Plan (EMP) provides management options to ensure impacts of the proposed construction are minimised. An EMP is an environmental management tool used to ensure that undue or reasonably avoidable adverse impacts of the operations are prevented, and the positive benefits of the projects are enhanced.

The objectives of the EMP are:

- ✓ to include all components of the proposed project.
- ✓ to prescribe the best practicable control methods to lessen the environmental impacts associated with the project.
- ✓ to monitor and audit the performance of the project personnel in applying such controls.
- ✓ to ensure that appropriate environmental training is provided to responsible project personnel.

The EMP acts as a document that can be used during the various phases of the proposed project. The contractor as well as the management and staff should be made aware of the contents of the EMP. See Appendix for EMP.

## 15. CONCLUSION

The EIA has been completed in line with the requirements of the Environmental Management Act, 2007 and Regulations and it is concluded and recommended that the specific site identified namely Portion 46 of the Remainder of Farm 58, Walvis Bay, Erongo Region has the full potential to be used for the proposed activities. The identified environmental and social impacts can be minimized and managed through implementing preventative measures and sound management systems. It is

recommended that the environmental performance be monitored regularly to ensure compliance and that corrective measures be taken if necessary.

In general, the construction and operation of the proposed project would pose limited environmental risks, provided that the EMP for the activity is used properly. The EMP should be used as an onsite tool during the construction and operation of the project. Parties responsible for non-conformances of the EMP should be held responsible for any rehabilitation that has to be undertaken. After assessing all information available on this project, Green Earth Environmental Consultants are of the opinion that the proposed project site is suitable for the proposed activities. The accompanying EMP will focus on mitigation measures that will remediate or eradicate the negative or adverse impacts.

## **16. RECOMMENDATION**

It is therefore recommended that the Ministry of Environment, Forestry and Tourism through the Environmental Commissioner support and approve the Environmental Clearance to construct and operate a 500MW Renewable Energy Power Plant on Portion 46 of the Remainder of Farm 58, Walvis Bay, Erongo Region and to issue an Environmental Clearance for the following 'Listed Activities':

### ***ENERGY GENERATION, TRANSMISSION AND STORAGE ACTIVITIES***

*The construction of facilities for:*

*(a) the generation of electricity.*

*(b) the transmission and supply of electricity.*

## LIST OF REFERENCES

- Atlas of Namibia Project, 2002. *Directorate of Environmental Affairs, Ministry of Environment, Forestry and Tourism*.  
<http://www.unikoeln.de/sfb389/e/e1/download/atlasnamibia/pics/climate/temperature-annual.jpg> [accessed: February 19, 2014].
- Christelis, G.M. & Struckmeier, W. 2001. Groundwater in Namibia, an Explanation of the Hydrogeological Map. *Ministry of Agriculture, Water and Rural Development*. Windhoek. Namibia, pp 128.
- Commencement of the Environmental Management Act, 2012. *Ministry of Environment, Forestry and Tourism*. Windhoek. Namibia, pp. 3 – 22.
- Constitution of the Republic of Namibia*, 1990. National Legislative Bodies. Namibia, pp. 6 – 63.
- DEAT. 2006 Guideline 4: *Public Participation in support of the Environmental Impact Assessment Regulations, 2006. Integrated Environmental Management Guideline Series*, Department of Environmental Affairs and Tourism (DEAT), Pretoria.
- DEAT. 2006 Guideline 5: *Assessment of Alternatives and Impacts in support of the Environmental Impact Assessment Regulations, 2006. Integrated Environmental Management Guideline Series*, Department of Environmental Affairs and Tourism (DEAT), Pretoria.
- Environmental Management Act, 2007. *Ministry of Environment, Forestry and Tourism*. Windhoek. Namibia, pp. 4 - 32.
- Forestry Act, 2001. *Office of the Prime Minister*. Windhoek. Namibia, pp. 9 – 31.
- Grunert, N. 2003. *Namibia Fascination of Geology: A Travel Handbook*. Windhoek. Klaus Hess Publishers. pp. 35 – 38.
- Mannheimer, C. & Curtis, B. 2009. *Le Roux and Muller's Guide to the Trees & Shrubs of Namibia*. Windhoek: Macmillan Education Namibia, pp. 249 – 439.
- Namibian Environmental Assessment Policy, 1995. *Ministry of Environment, Forestry and Tourism*. Windhoek. Namibia, pp. 3 – 7.
- Nature Conservation Ordinance*, 1975. Windhoek. Namibia, pp. 4 – 47.
- Soil Conservation Act, 1969. *Office of the Prime Minister*. Windhoek. Namibia, pp. 1 – 14.
- Water Resource Management Act, 2004. *Office of the Prime Minister*. Windhoek. Namibia, pp. 6 – 67.
- Weather - the Climate in Namibia*, 2012. <http://www.info-namibia.com/en/info/weather> [accessed: June 24, 2013].

# Northern women break bricklaying wall

Victoria Immanuel

Two young women, who ventured into the brickmaking industry, say men-dominance does not exist in the dictionary.

Gloria Munapito and Wilhemine Thomas from the Omusati region recently concluded a two-week training course in bricklaying under the MTC 4Life project.

"Bricklaying has, for a long time, been viewed as a man's world," said Munapito, who is planning to establish her own brick manufacturing plant soon in her community.

The training did not break her back, as she had already been making bricks at home.

Growing up among males shaped her worldview.

"Our communities think there are occupations, including brickmaking, reserved for men. To me, that is daydreaming. Women can do any occupation thought to be male-dominated if they decide to do so," Munapito told this publication.

"Being the only two females on the training course, you get very competitive with all the males. We want ours to be the best," Thomas said with a chuckle.

She has always had a passion for bricklaying.

As such, when the opportunity for training came knocking, she grabbed it with both hands.

"There are not many females in the construction industry, and I know we can excel. So I thought let's give it a try. There are so many women in beauty and other courses, and I am not a typical girly girl," she said.

Like Munapito, Thomas has always had a special relationship with brickmaking, which is "something I have always wanted to do".

## Connection

The two women then expressed gratitude to MTC for granting them the opportunity to change their lives and those of others.

The MTC 4Life is a socio-economic undertaking seeking to tackle poverty by mitigating youth unemployment through empowering Namibians to become self-employed within the SME sector.

The project aims to achieve this by providing training and upscaling young people to gain practical and entrepreneurial skills in animation, barbering, makeup, nail technology, hairdressing, catering, sewing, baking and manufacturing.

According to MTC's spokesperson Erasmus Nekundi, this year, the project focused on the Otjozondjupa, Kunene, Omusati, Kavango East and Kavango West regions.

This year's project empowered 40 young individuals from the five regions.

In contrast, last year's applicants were from all 14 regions of the country.

He added that each candidate will receive a toolkit and a capital of N\$5 000.

This, he said, is to help them start their businesses immediately after training. "The idea is to equip them to become self-employed citizens, who will employ others later when their businesses grow," said Nekundi.

The training was conducted by professionals from the chosen fields.

-vkaapanda@nepc.com.na



Brickmaking... Gloria Munapito and Wilhemine Thomas from the Omusati region concluded a two-week bricklaying course. Photo: Victoria Immanuel

# LPM lashes Swapo over 'tearing' cards

Steven Klukowski

KEETMANSHOOP—The Landless People's Movement (LPM) is dismayed by widely circulated footage in which a member of the ruling party is seen destroying LPM membership cards.

In a strongly-worded statement on Monday, LPM national spokesperson Lifalaza Simataa expressed shock following a video circulating, where Swapo Rehoboth town councillor Mara Beukes is seen campaigning with torn-up LPM membership cards over the weekend.

"We believe these are dangerous, underhanded and primitive tactics that cannot be tolerated, and that cannot be allowed to go unaddressed by the Electoral Commission of Namibia," he said.

According to the LPM spokesman, Beukes not only destroyed the assets of another political party, but also occupies a leadership role, and her actions cannot be taken at face value.

"She is further setting a bad stance that can inspire the public to engage in such destructive acts. This is a bad precedent to set, moving into the registration and election seasons of the country. It is vital that we promote a non-destructive form of campaigning to ensure democracy is experienced to its full extent," Simataa worriedly stated. He reiterated: "This should not be encouraged or tolerated, especially from members of the ruling party, who have a massive but dwindling following".

He then called on Swapo leaders to be exemplary by ensuring a peaceful electoral campaign period as parties move the country's length and breadth, canvassing for support ahead of November's Presidential and National Assembly elections.

Additionally, LPM youth leader Duminga Ndala took to social media to register her consternation.

"If there is anything threatening our peace and stability, it is definitely Swapo, a barbaric act from a leader," the outspoken Ndala said.

In the video, Beukes can be heard informing youth members that Swapo is the only party that can provide opportunities for them to participate on "sports grounds belonging to the government, unlike the Windmill Party".

"LPM will confuse and mislead you, while all that should matter to you must be Swapo," she is heard saying.

Swapo's Hardap regional coordinator Joplin Gontes was not available for comment at the time of going to press yesterday.

Meanwhile, Swapo spokesperson Hilma Nikanor threw the ball back in Gontes' court, as the person "on the ground".

"Be as it may, it is rather tricky to comment on social media posts from participating political parties during these periods of nearing the registration of voters and upcoming elections prior to verifying the authenticity of the ruling party, who have a massive but dwindling following". -sklukowski@nepc.com.na

## CALL FOR PUBLIC PARTICIPATION/COMMENTS

ENVIRONMENTAL IMPACT ASSESSMENT TO OBTAIN AN ENVIRONMENTAL CLEARANCE TO CONSTRUCT AND OPERATE A GREEN ENERGY COMPLEX (INCLUDING A 300,000 BPSD OIL REFINERY, 500MW RENEWABLE ENERGY POWER PLANT AND RELATED STORAGE TANK FARMS) ON PORTION 46 OF THE REMAINDER OF FARM 58 WALVIS BAY, ERONGO REGION

Green Earth Environmental Consultants have been appointed to attend to and complete an Environmental Impact Assessment and Environmental Management Plan (EMP) to obtain an Environmental Clearance Certificate as per the requirements of the Environmental Management Act (No. 7 of 2007) and the Environmental Impact Assessment Regulations (GN 30 in GG 4978 of 6 February 2012) to construct and operate a green energy complex (including a 300,000 BPSD Oil Refinery, 500MW Renewable Energy Power Plant and related Storage Tank Farms) on Portion 46 of the Remainder of Farm 58 Walvis Bay, Erongo Region.

Name of proponent: ISF Trading Enterprises (Pty) Ltd  
Project location and description: It is the intention of the Proponent to develop a Green Energy Complex which will include a 300,000 BPSD Modular Oil Refinery, 500MW Renewable Energy Power Plant including a BESS (Battery Energy Storage System), related Storage Tank Farms, Warehouses and Offices on Portion 46 of the Remainder of Farm 58, Walvis Bay, Erongo Region. Walvis Bay Town Council conditionally allocated Portion 46 (s305,2795) to the Proponent for the proposed project. The final transfer of the portion to the Proponent is subject to obtaining an Environmental Clearance as well as other statutory approvals. A locality plan of the site is displayed at the Walvis Bay Municipal Notice Board or available from the offices of Green Earth Environmental Consultants at Bridgeview Offices, No. 4 Dr. Kwame Nkrumah Avenue, Klein Windhoek. Interested and affected parties are hereby invited to register in terms of the assessment process to give input, comments, and opinions regarding the proposed project. A Background Information Document will be available to the I & AP's who registered.

A public meeting will be held on 24 May 2024 at 10:00 at the Narraville Community Hall.  
The last date for comments and/or registration is 31 May 2024.  
Contact details for registration and further information:

Green Earth Environmental Consultants  
Contact Persons: Charlie Du Toit/Carlen van der Walt  
Tel 0611273145 | E-mail: carlen@greenearthnamibia.com



## PUBLIC NOTICE

TOWN PLANNING AND ENVIRONMENTAL IMPACT ASSESSMENT FOR THE CREATION OF INDUSTRIAL PORTIONS

Take note that Stubenrauch Planning Consultants (SPC), (Town and Regional Planners and Environmental Consultants) on behalf of the Lüderitz Town Council (the proponent), the registered owner of the Remainder of Portion B of the Farm Lüderitz Town and Townlands No. 11 has applied to the Lüderitz Town Council and intends on applying to the Urban and Regional Planning Board and the Environmental Commissioner for the following:

- Subdivision of the Remainder of Portion B of the Farm Lüderitz Town and Townlands No. 11 into Portions A - K and Remainder;
- Rezoning of Portions A - J of Portion B of the Farm Lüderitz Town and Townlands No. 11 from "Undetermined" to "General Industrial";
- Reservation of Portion K of Portion B of the Farm Lüderitz Town and Townlands No. 11 as a "Street";

The area on the Remainder of Portion B of the Farm Lüderitz Town and Townlands No. 11 which is to be subdivided for the creation of Portions A - K is located north of Lüderitz town and is currently zoned for "Undetermined" purposes in terms of the Lüderitz Zoning Scheme, making it suitable for the proposed development.

In terms of the Urban and Regional Planning Act, 2018 (Act No. 5 of 2018) the Environmental Management Act (No. 7 of 2007) and the Environmental Impact Assessment Regulations (GN 30 of 6 February 2012), SPC herewith gives public notification of the above application as submitted to the Lüderitz Town Council.

A copy of the application, maps and its accompanying documents are available for inspection during normal office hours at the Lüderitz Town Council Office and SPC Office, 45 Feld Street, Windhoek.

REGISTRATION OF INTERESTED AND AFFECTED PARTIES (I&AP) AND SUBMISSION OF COMMENTS: All I&APs are hereby invited to register with the applicant to obtain further information. Further take notice that any person having objections and/or comments to the proposed development as depicted above, may lodge such objection/comment in writing with the Chief Executive Officer of the Lüderitz Town Council and with the applicant (SPC) before 07 June 2024 (14 days after the last publication of this notice).

Applicant: Stubenrauch Planning Consultants (SPC)  
PO Box 11869, Windhoek  
Tel: (061) 251189  
Our Ref: W/23054  
Email: brumwyn@spc.com.na





1918 Notices • Legal •

CLEARANCE TO CONSTRUCT AND OPERATE A GREEN ENERGY COMPLEX (INCLUDING A 3000KW BPSD OF REFINERY, SOLAR RENEWABLE ENERGY POWER PLANT AND RELATED STORAGE TANK FARMS) ON PORTION 45 OF THE REMAINDER OF FARM 58 WALUIS BAY, ERONGO REGION Green Earth Environmental Consultants have been appointed to attend to and complete an Environmental Impact Assessment and Environmental Management Plan (EIMP) to obtain an Environmental Clearance Certificate as per the requirements of the Environmental Management Act (No. 7 of 2007) and the Environmental Impact Assessment Regulations (GN 20 in GG 4878 of 6 February 2012) to construct and operate a green energy complex including a 3000KW BPSD OF REFINERY, 5000KW Renewable Energy Power Plant and related Storage Tank Farms on Portion 45 of the Remainder of Farm 58 Waluis Bay, Erongo Region. Name of proponent: SF Trading Enterprises Pty Ltd (Pty) and description: It is intended that the Proprietor to develop a Green Energy Complex which will include a 300,000 BPSD Modular Oil Refinery, 5000KW Renewable Energy Power Plant including a BESS Storage Energy Storage System, related Storage Tank Farms, Warehouses and Offices on Portion 45 of the Remainder of Farm 58 Waluis Bay, Erongo Region. Waluis Bay Town Council conditionally allocated Portion 45 (L035,2795 ha) to the Proprietor for the proposed project. The final transfer of the portion to the Proprietor is subject to obtaining an Environmental Clearance as well as other statutory approvals. A locality plan of the site as displayed at the Waluis Bay Municipal Notice Board is available from the office of Green Earth Environmental Consultants at Erongo Regional Office, No. 4 Dr. Kamea Muzura Avenue, Karibib. Interested and affected parties are hereby invited to register in terms of the assessment process to give input, comments and opinions regarding the proposed project. A Background Information Document will be available to the I.A.P.s who registered. A public meeting will be held on 24 May 2024 at 10:00 at the Namibia Community Hall. The last date for comments and/or registration is 31 May 2024. Contact details for registration and further information: Green Earth Environmental Consultants Contact Person: Charle De Tol/Carole van der Walt Tel: 0812734545 E-mail: carole@geearth-namibia.com

1919 Notices • Name Change •

THE ALIENS ACT, 1937 NOTICE OF INTENTION OF CHANGE OF SURNAME I (I) TARSAS VEZEMBOUJA WILSON residing at OPLUWO ERF NO. 138 and carrying on business as employed as (2) UNEMPLOYED intend applying to the Minister of Home Affairs for authority under section 9 of the Aliens Act, 1937, to assume the surname KUNANWARA. For the reasons that (3) I WANT TO CHANGE TARSAS TO MY FATHER'S SURNAME TO MY MOTHER'S SURNAME KUNANWARA. I previously bore the name (4) VEZEMBOUJA WILSON I intend also applying for authority to change the surname of my wife and minor children (5) To Any person who objects to my assumption of the said surname of KUNANWARA should as soon as may be lodge her/his objection, in writing, with a statement of her/his reasons therefor, with the Magistrate of WINDHOEK, Date: 24 APRIL 2024

CLAO240001566

THE ALIENS ACT, 1937 NOTICE OF INTENTION OF CHANGE OF SURNAME I (I) MOSES MUSHE KAMMI residing at ERF 736 JOHAN STREET, GROFFENTEN and carrying on business as employed as (2) POLICE OFFICER AT TRAMBEU POLICE STATION, OSAN-KOTO REGION, intend applying to the Minister of Home Affairs for authority under section 9 of the Aliens Act, 1937, to assume the surname of the SURNAME OF KAMMI. For the reasons that (3) MUSHE IS THE FATHER'S FIRST NAME AS THUS WOULD LIKE TO CHANGE TO "KAMMI" THE FATHER'S SURNAME AS IT IS WITH ALL THE SIBLINGS. I previously bore the name (4) MUSHE JAHNHO MUSHE. I intend also applying for authority to change the surname of my wife and minor children (5) MUSHE JAHNHO MUSHE TO KAMMI Any person who objects to my assumption of the said surname of KAMMI should as soon as may be lodge her/his objection, in writing, with a statement of her/his reasons therefor, with the Magistrate of WINDHOEK, Date: 24 APRIL 2024

CLAO240001343

THE ALIENS ACT, 1937 NOTICE OF INTENTION OF CHANGE OF SURNAME I (I) NDIYANA KHASHIKHALLU residing at GORINGBAR DAM, KARIBIA STREET, KGS 187 and carrying on business / employed as (2) CASHIER AT THE GROVE SUPERMARKET intend applying to the Minister of Home Affairs for authority under section 9 of the Aliens Act, 1937, to assume the surname of AMBROSIUS for the reasons that (3) IT'S THE

1920 Notices • Name Change •

ONE ON MY SCHOOL CERTIFICATES AND IT'S MY FATHER'S SURNAME. I previously bore the name (4) NDIYANA KHASHIKHALLU. I intend also applying for authority to change the surname of my wife and minor children (5) To Any person who objects to my assumption of the said surname of AMBROSIUS should as soon as may be lodge her/his objection, in writing, with a statement of her/his reasons therefor, with the Magistrate of WINDHOEK, Date: 20/04/2024

CLAO240001425 THE ALIENS ACT, 1937 NOTICE OF INTENTION OF CHANGE OF SURNAME I (I) EDWINA EVEREDNE MENSCH residing at NO 3 EXHE STREET, SUDERHOF WINDHOEK, NAMIBIA and carrying on business / employed as (2) SELF-EMPLOYED AT GELUK PSYCHOLOGICAL SERVICES CC AS CLINICAL PSYCHOLOGIST intend applying to the Minister of Home Affairs for authority under section 9 of the Aliens Act, 1937, to assume the surname for the reasons that (3) I WANT TO CHANGE MY CURRENT SURNAME MENSCH TO MY HUSBAND'S SURNAME AS MENSCH-HUSSELMANN. I previously bore the name (4) EDWINA EVEREDNE MENSCH. I intend also applying for authority to change the surname of my wife and minor children (5) To Any person who objects to my assumption of the said surname of EDWINA EVEREDNE MENSCH-HUSSELMANN should as soon as may be lodge her/his objection, in writing, with a statement of her/his reasons therefor, with the Magistrate of WINDHOEK, Date: 24 APRIL 2024

CLAO240001842

THE ALIENS ACT, 1937 NOTICE OF INTENTION OF CHANGE OF SURNAME I (I) SHAKONGO ANANAS residing at ONDEHALUUA, CHIRIKWIENBERG REGION and carrying on business / employed as (2) UNEMPLOYED intend applying to the Minister of Home Affairs for authority under section 9 of the Aliens Act, 1937, to assume the surname ANANAU ANANAS FANOUR for the reasons that (3) DNA TEST PROVES THAT SHAKONGO IS NOT MY FATHER. I WANT CHANGE TO MY MOTHER'S SURNAME ANANAU. I previously bore the name (4) SHAKONGO ANANAS. I intend also applying for authority to change the surname of my wife and minor children (5) To Any person who objects to my assumption of the said surname of ANANAU ANANAS FANOUR should as soon as may be lodge her/his objection, in writing, with a statement of her/his reasons therefor, with the Magistrate of WINDHOEK, Date: 06.05.2024

CLAO240001459

THE ALIENS ACT, 1937 NOTICE OF INTENTION OF CHANGE OF SURNAME I (I) LUZE-MARIE JACOBS residing at NO 34, KIDVAMBO NULOMA AVENUE, WALUIS BAY and carrying on business / employed as (2) SELF-EMPLOYED intend applying to the Minister of Home Affairs for authority under section 9 of the Aliens Act, 1937, to assume the surname KOTZE for the reasons that (3) BIOLOGICAL FATHER CEDED ALL RIGHTS AND RESPONSIBILITIES, AND LEFT THE COUNTRY. MOTHER WAS SOLE CUSTODIAN OF CONTROL AND ALL DECISIONS OF CHILDREN IS SOLE DISCRETION OF JACOBS PER COURT ORDER THERE IS NO COMMUNICATION WITH BIOLOGICAL FATHER ANYMORE & DIVORCED. I previously bore the name (4) I intend also applying for authority to change the surname of my wife and minor children (5) To Any person who objects to my assumption of the said surname of KOTZE should as soon as may be lodge her/his objection, in writing, with a statement of her/his reasons therefor, with the Magistrate of WINDHOEK, Date: 12 APRIL 2024

CLAO240001506

THE ALIENS ACT, 1937 NOTICE OF INTENTION OF CHANGE OF SURNAME I (I) JOHANNES RUBEN residing at EPENBERG, VILLAGER-ONHANGWA REGION and carrying on business / employed as (2) UNEMPLOYED intend applying to the Minister of Home Affairs for authority under section 9 of the Aliens Act, 1937, to assume the surname SHERKHA for the reasons that (3) BECAUSE I AM USING MY FATHER'S NAME AS A SURNAME AND I WANT TO CHANGE TO HIS SURNAME. I previously bore the name (4) I intend also applying for authority to change the surname of my wife and minor children (5) To Any person who objects to my assumption of the said surname of SHERKHA should as soon as may be lodge her/his objection, in writing, with a statement of her/his reasons therefor, with the Magistrate of WINDHOEK, Date: 17 MAY 2024

CLAO240001513 CASE NO. HC-MO-CM-ACCT-CON-2021/01312. IN THE HIGH COURT OF NAMIBIA in the matter between: STANDARD BANK NAMIBIA LIMITED Plaintiff and: BELINDA MONGWOTO Defendant NOTICE OF SALE IN EXECUTION in execution of a judgment of the above Honourable Court, dated 20TH JULY 2023 in the above action, a sale

1921 Notices • Name Change •

will be held by the Deputy Sheriff, WINDHOEK, at SECTION NO. 7 (see Notice, Rocky Crest, WINDHOEK, on 30 MAY 2024, at 10:00, of the above mentioned property. A unit consisting of: (a) Section No. 7 as shown and more fully described on Sectional Plan No. S32010 in the building or buildings known as VALLE ROCCOSO state at Rocky Crest, in the Municipality of Windhoek, Registration-Deeds "X", Khomas Region of which the floor area, according to the said Sectional Plan is 71 (Seventy One) square metres in extent, and (b) An undivided share in the common property in the land and building or buildings as shown and more fully described on the said sectional plan, apportioned to the said section in accordance with the participation quota of the said section. IMPROVEMENTS: 1 x kitchen, 1 x lounge, 2 x bedrooms, 1 full bathroom, 1 bath/vchab, OUTBUILDINGS: 1 x carport, 1 x Casine BBO. TERMS 10% of the purchase price and the auctioneer's commission must be paid on the date of the sale. The further terms and conditions of the sale will be read prior to the auction and for inspection at the office of the Deputy Sheriff, WINDHOEK and at the office of the execution creditor's attorneys, AUCTIONEERS NOTE: REFUNDABLE REGISTRATION FEE OF N\$5 000.00, DATED at WINDHOEK this 20th day of APRIL 2024. DR. RICZAR KALTA L. HOEVEN, Legal Practitioner for Plaintiff Floor 10th House, Jan Jonker Road WINDHOEK. PUK@puk020292

CLAO240001140

1922 Obituaries

Death & Funeral Notice



DOB 14 August 1994 DOD 12 May 2024 Jeremiah 28-11 Romans 6:18

Memorial: 17 May 2024, 15:00 at ELCRFN Church, Tsumeb (E-road 1) House Address: Erf. 582, Dorcas Kamundjense Str, CDM location Funeral: 18 May 2024 Contact Details: Marichen Hancock: 081-4330973 Immanuel Nuroke: 081-7857606 Heethondell Kahluti: 0812776666

URBAN JAZZ GROOVES 12h00 - 15h00 (SUNDAYS) Desert RADIO THE WILD VOICE Renowned jazz connoisseur, Dr Kagiso Moloi brings you relaxing grooves that will add to your Sunday mood. LIVE STREAM ON DESERT RADIO



UPBEAT ... Phillip Seidler has his sights set on an improved showing at the Paris Olympics.

'Prime' Seidler readies for Paris

• JOHN TUERIJAMA NAMIBIA'S Olympian Phillip Seidler will not relocate abroad to prepare for the Paris Games but plans to make a splash on the global sport's biggest stage. The Swakopmund-born open water swimmer secured his place at the 2024 Olympic Games at a qualifier in Doha, Qatar, earlier this year and has since focused on preparing to improve on his previous best at the competition. Speaking to Desert Radio earlier this week, Seidler, who is trained by his mother, Nadja Seidler, said his training is focused on speed endurance, with the aid of his father Helmut Seidler and a female Russian expert. "We are working super hard to make the upcoming Olympic Games a huge success and represent Namibia proudly," the nation's

top open water swimmer said. The 26-year-old would not be headed to a second Olympic Games had he not been persuaded to come out of retirement after capturing gold in the 2023 African Beach Games 5km open water swim. What made the win more noteworthy was that he went into that competition without a formal training camp and was not aiming for the podium. "My family, including the Namibia National Olympic Committee (NNOC), held a serious meeting and decided to talk to me because they wanted to discuss the possibility of me coming out of retirement to try and qualify for the Olympic Games in Doha," said Seidler, who is philosophical about his journey to Paris. "In life, you won't achieve much unless you are brave enough to

take the chance. So, I was brave enough and took the chance, which resulted in me qualifying for the Olympic Games." Seidler said his objective in Paris is not about swimming a fast time but eyeing an improved finish. "For Namibia, the biggest achievement is not always the medals, but the participation. That, even athletes with limited resources can reach the pinnacle of sport, which is the Olympic Games," said Seidler. "Personally, a lot has changed in order to achieve this goal of mine. At the last Olympic Games, I was just a kid and now I am actually a full-grown man in my prime with a lot of strength, which means my body is at its best," he said. "A lot of adjustment has taken shape when looking at speed and I am already in great shape. Mentally, I am very strong."

Multitalented teen focused on realising dream

• JOHN TUERIJAMA THEY say a jack of all trades is a master of none, but the youngest netball player in the Omaheke region has risen to the occasion to debunk this assertion. Not only is 16-year-old Hitrepi Kahuikée, affectionately known as Golden, a celebrated netball player in school and national circles, she has pulled off similar feats in tennis in which she has been collecting silverware since 2017. Born and bred in Windhoek, but with roots that extend as far as Erindi in "Ukambe in the Otjinene constituency of the Omaheke region, Golden also excels academically as a Grade 10 pupil at Windhoek High School. She plays for Wanderers Club in the national netball first division and shone the limelight on her team, Fine Young Stars netball club, when they clinched the Omaheke Club Top 20 Netball Cup at the Khomasstad Stadium recently. The soft spoken teen also managed to scoop the coveted youngest and promising player of the tournament awards. However, the modest athlete downplays her rise to prominence, preferring to focus on the collective. "It was an exciting team effort. Everyone brought their A-game

which enabled us to overpower the competition. But all in all, I am happy that I played a major part in the victory of my team and even scooped some silverware to show for it." Golden told The Namibian on Wednesday. Her father, Fire Kahuikée, could not contain his joy when he spoke to Desert Radio recently about the rising star. "I am grateful to God and I am going to do everything in my power to ensure that my daughter excels exponentially in whatever decision she takes with regard to her eventual choice of sport. Right now her primary objective is to graduate from high school," he said. "You know education is vital and even though she is multitalented, it is important to shape her educationally to be a productive citizen," he said. Golden walked away with the player of the match prize in the semi-final encounter against arch-rivals Manokile. Fine Young Stars eventually clinched tournament honours after beating Eastern Swallows in the finals. Her starring feat comes fresh after representing Windhoek High School's under-17 and senior teams at the recent schools tournament in Pretoria, South Africa, and the inter-schools competition against Windhoek Gymnasium.

PROUD FATHER Golden attributes her success in sport to the involvement of her father, who was a lethal striker in his heyday when he turned out for Young Hungry Lions, Young Stars of Okahandja and Young Lions. He said the quest to help Golden become a formidable sportswoman has not been without its share of challenges. "Firstly, she started off with tennis, which is a sport code primarily played by kids in the affluent suburbs. As such, there were no facilities in Katutura where she could practise," he said. "The second stumbling block is the issue of sponsorships, which as we know, are very hard to come by in Namibia." Other than being a natural athlete, Golden stands out for her hard work and commitment, said her father. "Recognising our children's talents and making sure that they are nurtured is another way through which we can empower them. Sadly though, this is something that not all parents, particularly those from previously disadvantaged communities like ours, believe in," said the proud father, who hardly misses his daughter's games or practice sessions.

# Katima Rural tired of empty promises

■ Albertina Nakale

**R**ESIDENTS of Katima Mulilo Rural constituency have expressed their displeasure over the delay in the construction of the Bukalo-Muyako-Ibbu-Ngoma road.

The aggrieved community, which last week staged a peaceful demonstration, is concerned that the delayed road development that was promised to them over a decade ago remains a mirage.

On behalf of the community of Muyako and the Katima Mulilo Rural constituency, Induna Michael Kawana of Iseke village addressed the concerns regarding the slow pace of the road.

The community feels that while their constituency is the second largest in terms of population after Katima Mulilo Urban, it remains the least developed compared to all the other constituencies in the Zambezi region.

"In 2020, during election campaigns, the honourable councillor [Warden Simushi] on many occasions and in various places talked about all the developments that were to be seen in the constituency. One of these was the development of the Bukalo-Muyako-Ibbu-Ngoma road, which was upgraded to a tarred road. The tender was released on 3 December 2020, and the process would have been completed by now," Kawana charged.

Attempts to get comment from Simushi have been fruitless since Monday.

The community claims they have not been informed of progress and implementation since the tender process for the design was concluded. United, the community said the lack of progress regarding the road's construction has angered them.

"If we fail to reach a compromise on when the project can be implemented, as a community, we regret the action that our community members may resort to," they threatened. The community has since formed a committee that engaged Katima



Photo Cont  
Snail's pace... The Katima Mulilo Rural residents are unhappy with delays in the construction of the Bukalo-Muyako-Ibbu-Ngoma r

Rural councillor Simushi regarding the road.

That meeting yielded nothing.

After the unfavourable response from the office of the councillor, the committee said they further wrote a letter to the works and transport minister, Deputy Prime Minister John Mutorwa, calling for his intervention.

"The honourable minister's response directed the committee back to the honourable councillor's office to respond to our enquiry and directed the Roads Authority to provide an update to the community regarding the status of the construction project. The community has not received any response from either the councillor's office or the Roads Authority," Kawana said.

They said it is a fact that the constituency is strategic, with the potential to become a great economic hub for the region.

"It is on this road that you find Lake

Lyambezi, which is a great source of fishing activities and rich land for cultivation. This is also where we find large deposits of quality gravel in the whole region. It has a large conservation area with potential for tourism activities," the headman said.

Other benefits of the constituency include that it borders Botswana, with long-term plans to bring another dedicated port of entry between Muyako and Mahundu areas from Satau in Botswana.

It also connects more than seven government schools and clinics.

"Improving the road infrastructure improves accessibility and the livelihood of the inhabitants of Katima Mulilo Rural," he said. Residents likewise bemoaned water scarcity in the constituency.

They said that in 2013, the water ministry said the completion of the N\$35 million Katima Mulilo/Ngoma water pipeline would

bring relief to most of them.

At the time, Mutorwa said the project was to be completed by 2015 across constituencies in the Zambezi region.

According to Kawana, the community suffering.

He said Muyako was earmarked for construction of a desalination borehole make water challenges a thing of the

"This is currently a ghost project, nothing is happening. We are tired of promises and empty words without action. As a community, we demand action will not accept empty promises politicians anymore because they now our votes since elections are approaching. They must act now. We are unhappy want our road to be tarred, and accessible drinking water for the whole constituency the community petitioned.

- anakale@nepc.com.na

CALL FOR PUBLIC PARTICIPATION/COMMENTS

**ENVIRONMENTAL IMPACT ASSESSMENT TO OBTAIN AN ENVIRONMENTAL CLEARANCE TO CONSTRUCT AND OPERATE A GREEN ENERGY COMPLEX (INCLUDING A 300,000 BPSD OIL REFINERY, 500MW RENEWABLE ENERGY POWER PLANT AND RELATED STORAGE TANK FARMS) ON PORTION 46 OF THE REMAINDER OF FARM 58 WALVIS BAY, ERONGO REGION**

Green Earth Environmental Consultants have been appointed to attend to and complete an Environmental Impact Assessment and Environmental Management Plan (EMP) to obtain an Environmental Clearance Certificate as per the requirements of the Environmental Management Act (No. 7 of 2007) and the Environmental Impact Assessment Regulations (GN 30 in GG 4878 of 6 February 2012) to construct and operate a green energy complex (including a 300,000 BPSD Oil Refinery, 500MW Renewable Energy Power Plant and related Storage Tank Farms) on Portion 46 of the Remainder of Farm 58 Walvis Bay, Erongo Region.

**Name of proponent:** ISF Trading Enterprises (Pty) Ltd  
**Project location and description:** It is the intention of the Proponent to develop a Green Energy Complex which will include a 300,000 BPSD Modular Oil Refinery, 500MW Renewable Energy Power Plant including a BESS (Battery Energy Storage System), related Storage Tank Farms, Warehouses and Offices on Portion 46 of the Remainder of Farm 58, Walvis Bay, Erongo Region. Walvis Bay Town Council conditionally allocated Portion 46 (±305,2795 ha) to the Proponent for the proposed project. The final transfer of the portion to the Proponent is subject to obtaining an Environmental Clearance as well as other statutory approvals. A locality plan of the site is displayed at the Walvis Bay Municipal Notice Board or available from the offices of Green Earth Environmental Consultants at Bridgeview Offices, No. 4 Dr. Kwame Nkruma Avenue, Klein Windhoek.

Interested and affected parties are hereby invited to register in terms of the assessment process to give input, comments, and opinions regarding the proposed project. A Background Information Document will be available to the I & AP's who registered. A public meeting will be held on 24 May 2024 at 10h00 at the Narraville Community Hall.

The last date for comments and/or registration is 31 May 2024. Contact details for registration and further information:

**Green Earth Environmental Consultants**  
Contact Persons: Charlie Du Toit/Carion van der Walt  
Tel: 0811273145  
E-mail: carion@greenearthnambibia.com



INVITATION TO BID



NamPower (Pty) Ltd hereby invites qualified, competent, and registered companies to submit their Bids for the under-mentioned:

Bid Number	Bid Description
W/ONB/NPWR-05/2024	Construction of a Perimeter Fence Between the Main Entrance and Tail Race for Ruacana Power Station Phase II
G/ONB/NPWR-10/2024	Replacement of D2D (Disk to Disk) Backup Solution
G/ONB/NPWR-13/2024	Supply, Delivering, Testing and Commissioning of Medium Voltage Distribution Transformers and Oil Filled Shunt Reactors

**Cost per Set of Documents:** Free

**Bid Documents Availability:** Documents for this bid are available on the NamPower website [www.nampower.com.na](http://www.nampower.com.na)

**Site Visits and Closing Date:** Kindly refer to the bidding documents.

**Details of Bid Submission:**

Kindly submit your bid in a sealed envelope, clearly marked with the "BID NUMBER AND DESCRIPTION" as stated above, to be deposited in the Bid box located at the entrance foyer at NamPower Convention Centre, Cnr of Dr Kenneth Kaunda and Goethe Street, Windhoek.

**For Enquiries Contact:**

Tel: +264 61 205 2324  
Email address: [bidclarifications@nampower.com.na](mailto:bidclarifications@nampower.com.na)

**KINDLY NOTE: ALL INVITATIONS ARE SUBJECT TO THE PUBLIC PROCUREMENT ACT 15 OF 2015 AND ITS REGULATIONS AND GUIDELINES.**

# Classifieds

Tel: +264-61-279 632 / 279 646 • Fax: +264-61-22 9206 • email: classifieds@namibian.com.na

DEADLINE: 12H00 - 2 WORKING DAYS PRIOR TO PLACEMENT

## INDEX

1210	Anniversaries
1220	Weddings
1230	Announcements
1240	Birthdays
1250	Reunions
1260	Special Messages
1270	Thank You Messages
1280	Valentine's Messages
1410	Opportunities
1420	Business for Sale
1430	Taxi Licences
1440	Services
1420	House and Garden
1810	General
7440	Communications & Security
7450	Lost & Missing
7460	Transport Wanted & Offered
2610	Education & Training
2710	Wanted
2720	Offered
3210	Food & Beverages
3610	Wanted
3630	For Sale
3760	Auctions
3910	Health & Beauty
4010	Hospitality (See also Travel & Tourism)
4110	Wanted
4210	For Rent
4310	For Sale
4910	Leisure & Entertainment
5610	Livestock & Pets
5910	Auctions
5910	For Sale
5910	Lost & Missing
5910	Wanted
5316	Vehicles Wanted
5320	Vehicles for Hire
5360	Vehicles for Sale
5370	Vehicle Auctions
5380	Vehicle Spares & Accessories
5610	Legal
5620	Public
5630	Tenders
5710	Churches
5920	Name Change
5920	Rezoning
6000	In Memoriam
6010	Tombstone Unveiling
6020	Death & Funeral Notices
6030	Condolences
1270	Thank you messages
7800	Travel & Tourism
2024	Rates and Deadlines

### Business & Finance

**• Opportunities •**

**DO YOU URGENTLY NEED CASH?**  
Get up to 75% of your vehicle's value in 45 min! Just a car! More cash when you need it! Autocash 061 400 676.

CLAO240001194

**DO YOU URGENTLY NEED CASH?**  
GET UP TO 75% OF YOUR VEHICLE'S VALUE IN 45 MINUTES!  
Just a car! More cash when you need it.  
061 400 676  
www.autocash.com

Conveniently situated in the heart of Windhoek, the office suites boasts a prime location with easy access to Government Office/Park, restaurants, and other amenities. Immerse yourself in a thriving business district that fosters collaboration and networking opportunities. Affordable and transparent pricing offers competitive rates with no hidden fees. Contact us now at: [info@autocash.com.na](mailto:info@autocash.com.na) / WhatsApp: 081-7382616 / Monday to Friday: 8.30 - 17.30

CLAO240001426

**AUTO EQUITY LOANS**  
Borrow up to N\$100K on your vehicle  
Park for 3 months (Renewable)  
Once-off interest charged  
Call +26471300592 / 0857759878

**NEED CASH?** Bring your car and we give you 50% of its value. No other documents needed. 25-35% interest over 3 months. Contact: 081293111 / [info@financialsolutions.com](mailto:info@financialsolutions.com)

CLAO240001407

**NEED CASH?**  
BRING YOUR CAR AND WE GIVE YOU 50% OF ITS VALUE.  
NO OTHER DOCUMENTS NEEDED.  
25-35% INTEREST OVER 3 MONTHS.  
061-230 111 / [info@financialsolutions.com](mailto:info@financialsolutions.com)

### Employment

**• Offered •**

**Vacancies for general workers at Supermarket in Windhoek.**  
- Must have grade 12.  
- Police clearance.  
- 25 years and older.  
Please contact: 0812955411 / 0812786384

CLAO240000896

### Employment

**• Offered •**

**Professional Car Repair Shop** is seeking for Senior Mechanics.  
**Requirements:**  
1. NO Level Certification  
2. 10 years working experience or AIB/Bras of Car  
3. Broad understanding of auto electronics  
4. Valid driver's License  
Accepted candidates will undergo a 2-week qualification verification at our facility. Send CV's to: [info@v4kad.com](mailto:info@v4kad.com)

CLAO240001424

### Employment

**• Offered •**

**Wesco Notice Job Description:**  
Food Manufacturing Factory. Wanted Duty Station. Wesco Overall Description: An established food manufacturer is seeking to fill the position of Factory Manager. He will be responsible for all day to day operations of production, production planning against sales requirements, breakdown prevention and will include managements of staff. Applicants who meet the following criteria are encouraged to apply.  
**Minimum Requirements:**  
- Minimum 5 years factory management in food manufacturing.  
- Must be able to demonstrate experience on single extruders equipment namely on the following machines: Maddou/American Extrusion/Egi.  
- Must be able to evidence experience to fill form and seal machines.  
- Must be able to demonstrate previous management of staff and HR related responsibilities.  
- Heat and Exchange control experience would be advantageous.  
- Strong reporting ability/Competent on Microsoft Office.  
- Good general understanding and experience in minor electrical and mechanical repairs. All documents: application letter, Driver's License, qualifications and academic transcripts to be submitted to [recruitment@wesco.com](mailto:recruitment@wesco.com).  
Closing Date: 14 May 2024

CLAO240001426

**NA Construction** is a well-documented company in building industry in Namibia. Due to business expansion we hereby offer the following employment:  
1. Overall site supervisor  
2. Foreman of brick works  
3. Foreman of plumbing works  
4. Supervisor of carpentry  
Candidates should have supervised over 5 big projects with contractual value of N\$400 million. They should also have full capacity to resolve any on site potential technical problems and should have communication ability with Engineers. They should also be willing to teach undergraduates. Excellent speaking ability and 9 years of working experience will receive preferential consideration. Those who meet above requirements are welcome to submit their supporting documents to [naconstruction@gmail.com](mailto:naconstruction@gmail.com)

0814835500

**We're Hiring for UK / Usa / Canada Cooks/ Chefs / Waiters / Bartenders / Cleaners** Call: 0711576564 / 0718917253 (WhatsApp) Web: [www.careerandhelp.com](http://www.careerandhelp.com) Email: [info@careerandhelp.com](mailto:info@careerandhelp.com) Registration Fee: 1500/- Namibia Dollars. Assistants to travel and Accommodations offered

CLAO240001473

**• Offered •**

**F&O Enterprises CC** now hiring individuals with experience in making oriental cuisine. Priority will be given to those with at least 10 years work experience. We are looking for 5 Dim Sum chefs, 1 cooks, 3 managers. Please bring your resume for an interview at 202 Hosa Centre on 13th May 2024, 10h00 am to 12h00 pm.

CLAO240001481

**Wanted Executive Chef for 5 star property in Sossusvlei area**  
- 10 Years' experience in high end kitchen  
- 5 Years' Experience at Executive Chef at a 5 star property  
- Diploma or Degree in Culinary Art  
- Well presented and hard working  
- Driver's License  
- Live in position 6 Weeks on 2 weeks off - send CV to [norman.walker@ardbeyond.com](mailto:norman.walker@ardbeyond.com).  
Deadline: 17 May 2024

CLAO240001484

### Employment

**• Offered •**

**VACANCIES**  
Cashier/Teiler required at Namba Totes Etango Mall Branch in Otshakab submit CV's personally at Namban Totes Etango Mall and Namibian Totes Werner Lot Street behind Sheppia in Windhoek. Applicants must have Grade 12 Certificate and please note that CV's will not be returned.  
CLEANER is also required at Namba Totes Windhoek. Someone with very neat and sober habits submit CV's personally at Namban Totes Werner Lot and note that CV's will not be required

CLAO240001504

**• Offered •**

**Mtshu Physiotherapy in Otshakab** is inviting suitable applicants for a physiotherapist position.  
**Requirements are:**  
- HCNA fully registered Physiotherapist with at least 6 years experience.  
**Responsibilities:**  
- Managing a physiotherapist practice and attend to private hospital patients. Apply to: [mtshu@physio.com](mailto:mtshu@physio.com)

0812455204

CLAO240001494

### Employment

**• Offered •**

**WESCO Group Namibia**

**Position: Financial Manager**  
**Duty Station: Walvis Bay**

**Position Overview:**  
As a Financial Manager, you will play a pivotal role in overseeing the financial health and strategic direction of our organization.

- Main Duties and Responsibilities:**
- Financial Planning and Analysis:** Create and maintain models to aid decision-making, analyze trends, and present reports to management.
  - Budgeting and Forecasting:** Lead the annual budget process, monitor performance, and collaborate for alignment with operational goals.
  - Cash Flow Management:** Forecast cash needs, optimize reserves, and ensure compliance with banking and regulatory requirements.
  - Financial Operations:** Oversee day-to-day finances, establish internal controls, and streamline processes for efficiency.
  - Risk Management:** Identify, assess, and mitigate financial risks, developing strategies to protect the company's interests.

**Minimum requirements:**

- Bachelor's degree in Finance, Accounting, Economics, or related field.
- Professional registration will be an added advantage
- Proven experience in a Financial Manager role, preferably in marine, gas & oil sector.

To apply, please submit your CV and cover letter highlighting your qualifications and relevant experiences by Monday, 17th of May 2024 to [reception@wesco.com.na](mailto:reception@wesco.com.na)

CLAO240001496

### Employment

**• Offered •**

**ONGOMA TRADING ENTERPRISES JOB OPPORTUNITIES (ROAD INFRASTRUCTURE MAINTENANCE, SITE AGENT)**  
**Responsibilities:** Conduct visual assessments of unsealed roads. Handle operational tasks (payment certificates, budget updates). Collaborate with inspectors during road inspections. Measure quantities for payment. Efficiently manage contract works. Oversee biomass surface maintenance and more.  
**Qualifications:** Relevant degree or diploma in civil engineering or related field. Proven experience in road construction and maintenance projects. Strong organizational and communication skills. Ability to work collaboratively with diverse teams. Driver's license is a must.  
**SITE FOREMAN:** Responsibilities: Supervise daily operations. Coordinate closely with the Site Manager. Lead the construction team. Ensure safety and quality.  
**Qualifications and experience:** Experience in biomass surface maintenance, shoulder upkeep, and more. Strong communication skills. Adaptability and technical knowledge. Driver's license (preferably Code C). Contact: 081 771 3587 or send CV to: [santamanyana@ve.com](mailto:santamanyana@ve.com).  
Deadline: 17 May 2024

CLAO240001487

**WESTBEST BREEDERS & GUEST SELLERS PRODUCTION AUCTION**

**THURSDAY, 30 MAY 2024 WINDHOEK**

**18:00**

**ON OFFER:**  
± 20 Boergoat rams  
± 60 Boergoat ewes  
± 10 Meatmaster rams  
± 10 Meatmaster ewes

**BREEDERS:**  
Kaysar Boergoat Stud  
Daub Boerbok Stoot  
Tuundja Kuje Stud  
Sandveld Boerbok Stoot  
Kazahe Boergoat Breeders  
Wolfe Boerbok Stoot

**ENQUIRIES:**  
Paul Klein  
081 128 6731

CLAO240001493

### Goods

**• Auction •**

**BANK REPO & SALVAGE AUCTION**  
Friday 17 May 2024 @ 10:00  
Aucor Ondangwa

Duly instructed by the bank, in terms of credit Agreement Act, Aucor Namibia (Pty) Ltd. will be selling the following Bank Repossessed Vehicles by Online & Physical Auction:

<b># AUTOMOTIVE</b>	<b># AUTOMOTIVE</b>
2022 VW POLO VIVO 1.4	2014 TOYOTA HINO 300
2019 VW POLO VIVO 1.4	2014 VW VVO 1.6
2017 FORD RANGER 2.2 DIC	2014 VW VVO 1.7
2018 NISSAN NP300 2.5 DCL4X4	2014 VW JETTA VI 1.4 TSI
2015 HONDA CRV 2.0	2012 NISSAN NP300 2.4 4X4
2015 ISUZU KB 240 LE 4X4 PAJ	2011 VW GOLF 2.0 GTI
2014 VW PASSAT 2.0 TSI	AND SO MUCH MORE!

Registration & Bidding on: [www.aucornamibia.com](http://www.aucornamibia.com)  
Online Bidding Starts: Monday 13 May 2024 @ 10:00  
Webcast Auction: Friday 17 May 2024 @ 10:00  
Viewing: Ondangwa 13 - 16 May 2024 @ 09:00 - 15:00

**BANK REPO & FLEET AUCTION**  
Thursday 23 May 2024 @ 10:00  
Windhoek Kings of Africa

Duly instructed by the bank, in terms of credit Agreement Act, Aucor Namibia (Pty) Ltd. will be selling the following Bank Repossessed Vehicles by Online & Physical Auction:

<b># AUTOMOTIVE</b>	<b># AUTOMOTIVE</b>
2022 VW T CROSS 1.0 TSI	2020 NISSAN NP 300 DIC 4X4
2022 VW POLO TSI	2020 MITSUBISHI ASK MIVEV
2021 TOYOTA HILUX G06 2.4	2019 VW GOLF VVI 1.4
2020 NISSAN NP 300 DIC 4X4	2019 TOYOTA COROLLA 1.6
2020 MITSUBISHI ASK MIVEV	2015 TOYOTA COROLLA 1.6
2019 VW POLO VVI 1.4	2008 BMW 6
2019 TOYOTA COROLLA 1.6	AND SO MUCH MORE!

Registration & Bidding on: [www.aucornamibia.com](http://www.aucornamibia.com)  
Online Bidding Starts: Monday 20 May 2024 @ 10:00  
Webcast Auction: Thursday 23 May 2024 @ 10:00  
Viewing: Windhoek 20 - 22 May 2024 @ 09:00 - 15:00

**T & C apply Buyer's premium will be charged. Details subject to change without prior notice.**

Contact Us At:  
Windhoek: +264 61 267 8468  
Ondangwa: +264 66 240189  
Email: [info@aucornamibia.com](mailto:info@aucornamibia.com)  
WhatsApp: +264 64 463374

### Hospitality

**• Hospitality •**

Good living Bed and Breakfast.  
Khemadasi Luxury Hill Single bed from N\$380, Double from N\$450 - N\$550.  
Free Wi-Fi, Daily-Arson breakfast, swimming pool, secure parking. 0812972628 / 061302721 / 0812972620

CLAO240001447

### Housing & Property

**• Wanted •**

Tswalala Real Estate. Urgently looking for houses and flats for RENT and for SALE in Windhoek. 0816534437 / [info@tswalalagroup.com](mailto:info@tswalalagroup.com)

CLAO230005889

Tswalala Real Estate: We are urgently looking for FARMERS for SALE and for RENT in Otja. Grootfontein, Oteyango, Hottelid, 0816534437

CLAO240001398

### Housing & Property

**• For Rent •**

Tswalala Real Estate. Urgently looking for houses and flats for RENT and for SALE in Windhoek. 0816534437 / [info@tswalalagroup.com](mailto:info@tswalalagroup.com)

CLAO230005889

Tswalala Real Estate: We are urgently looking for FARMERS for SALE and for RENT in Otja. Grootfontein, Oteyango, Hottelid, 0816534437

CLAO240001398

**2 BED TO LET**  
FROM **N\$ 3350**  
**FIRST MONTH RENT FREE**  
081 664 2669

The rooms to rent in Shardsbulla, Katutura. Contact: 0812252611

CLAO240001461

**CALL FOR PUBLIC PARTICIPATION/COMMUNICATIONS ENVIRONMENTAL IMPACT ASSESSMENT TO OBTAIN AN ENVIRONMENTAL CLEARANCE TO CONSTRUCT AND OPERATE A GREEN ENERGY COMPLEX INCLUDING A 300,000 BPSD OIL REFINERY, 500MW RENEWABLE ENERGY POWER PLANT AND RELATED STORAGE TANK FARMS ON PORTION 46 OF THE REMAINDER OF FARM 58 WALVIS BAY, ERONGO REGION Green Earth Environmental Consultants have been appointed to attend to and complete an Environmental Impact Assessment and Environmental Management Plan (EMP) to obtain an Environmental Clearance Certificate as per the requirements of the Environmental Management Act (No. 7 of 2007) and the Environmental Impact Assessment Regulations (GN 30 in GG 4876 of 6 February 2012) to construct and operate a green energy complex including a 300,000 BPSD Oil Refinery, 500MW Renewable Energy Power Plant and related Storage Tank Farms on Portion 46 of the Remainder of Farm 58 Walvis Bay, Erongo Region. Name of proponent: ISF Trading Enterprises (Pty) Ltd. Project location and description: It is the intention of the Proponent to develop a Green Energy Complex which will include a 300,000 BPSD Modular Oil Refinery, 500MW Renewable Energy Power Plant including a BESS (Battery Energy Storage System), related Storage Tank Farms, Warehouses and Offices on Portion 46 of the Remainder of Farm 58 Walvis Bay, Erongo Region. Walvis Bay Town Council conditionally allocated Portion 46 (GN 5295) to the Proponent for the proposed project. The final transfer of the portion to the Proponent is**

**DISCLAIMER** ALL PRODUCTS AND SERVICES ADVERTISED ARE SOLELY THE RESPONSIBILITY OF THE ADVERTISER. THE NAMIBIAN DOES NOT VALIDATE OR ENDORSE THE CLAIMS MADE BY ANY ADVERTISEMENT. THE ONUS LIES WITH POTENTIAL CUSTOMERS TO EVALUATE THE AUTHENTICITY OF SUCH PRODUCTS OR SERVICES.



# MTC Volleyball National League Launched

Three months after securing an MTC N\$3million sponsorship deal, the Namibian Volley Federation (NVF) has on Saturday 11 May launched the first ever MTC Volleyball National League in Windhoek.

Sitting with the mandate to administer, manage, and coordinate the league, and receiving an injection aid of N\$1 million annually for the next three years, NVF, is entrusted with the responsibility to grow and transform the league into a top tier professional league in the country. Giving an overview of the league, Namibia Volleyball Federation President, Hillary Dux Imbuba enthused that the launch signifies a new era and genesis of growth and development for volleyball as a sport in Namibia.



“The MTC Volleyball National League stands as a pinnacle of excellence in Namibian volleyball, bringing together the finest talents from across the nation to compete in a spirited display of athleticism and sportsmanship. With 8 male and 8 female teams representing various regions, this league promises to showcase the diversity and vibrancy of Namibian volleyball. Importantly, this initiative aligns seamlessly with the strategic vision outlined in the Namibia Volleyball Federation's current strategic plan, reinforcing our commitment to advancing the sport at all levels.”

Imbuba added that “the league will traverse through multiple towns, including Katima Mulilo, Rundu, Ondangwa, Otjiwarongo, Swakopmund, Mariental, and culminating in the capital city, Windhoek. This extensive reach ensures that volleyball enthusiasts from all corners of the country will have the opportunity to witness top-tier competition firsthand, fostering a deeper sense of community and engagement.”

In the remarks delivered on his behalf, MTC's Chief Human Capital, Corporate Affairs and Marketing Officer, Tim Ekanjjo commended the leadership on the MTC Volleyball League for the invaluable work to ensure that the league kicks off in record time of receiving the sponsorship.

“We recognize and commend the work done by the NVF leadership to get us here. Additionally, I want to remind the leadership and the players how this sponsorship came about. It was because of the sheer commitment and passion displayed by the players for the love of Volleyball even when they knew they played for as little as N\$1 500 as prize monies at the end of the season and covering all expenses themselves.

“This is the same passion that we want to see throughout this league even now that MTC is onboard. That fire must continue to burn as this

league commence today with 8 women teams and 8 male teams representing the very best of Namibian volleyball.” Ekanjjo urged NVF and players to play their parts in making the league attractive. “Have a good marketing strategy, stay committed to your craft, remain professional and always protect your brand. The MTC team will be there to assist you every step of the way, but you must bring your part by protecting the integrity of the league through fairness and transparency. We are excited to walk this journey with you, hope-

fully for the next 3 years. We will evaluate the performance of this league on an annual basis and if it does not deliver, we will help you deliver.”

Deputy Director in the Ministry of Sport, JoAnne Manuel congratulated NVF and promised her office's support to the federation. Manuel urged for sound leadership and accountability, and professionalism for the sport while commending MTC for extending a hand for the launch of the MTC Volleyball national League in the country.

## VACANCY: JUNIOR ACCOUNTANT

An equal opportunity client of ours who operates in the fishing industry is in need of a Junior Accountant to join their finance team. The ideal candidate should be a logical thinker, have a sound knowledge of accounting principles and great attention to detail.

- The main responsibilities will include:
- Monthly payroll calculation, administration, and subsequent statutory submissions.
  - Accounting processing (up to Trial Balance level), journals, and intercompany reconciliations.
  - Implementing basic inventory management.
  - Assistance with NamRA correspondence and ITAS submissions.
  - Providing support to the rest of the finance department to ensure optimal functionality. Ad hoc duties which may be expected of the position.

- Main requirements:
- Accounting qualification – either a degree or higher diploma.
  - Should be able to communicate clearly and with the necessary etiquette verbally and in writing in English.
  - Be able to work under pressure at month-end and be a team player.
  - At least 7 years' experience in the accounting field.
  - Highly proficient in Microsoft Excel, Microsoft Word and Microsoft Outlook.
  - Sound SAGE VIP knowledge and PASTEL knowledge.
  - Exceptional attention to detail and logical thinker. Be able to interact professionally and patiently with crew members when any salary inquiries arise.

Should you meet the above requirements, send your Curriculum Vitae to Masadi at [adminwvb@csanam.com](mailto:adminwvb@csanam.com)

Only short-listed candidates will be contacted and references will be followed-up.

The closing date for applications is Wednesday 22 May 2024.



## Green Earth Environmental Consultants CALL FOR PUBLIC PARTICIPATION

**ENVIRONMENTAL IMPACT ASSESSMENT TO OBTAIN AN ENVIRONMENTAL CLEARANCE TO CONSTRUCT AND OPERATE A GREEN ENERGY COMPLEX (INCLUDING A 300,000 BPSD OIL REFINERY, 500MW RENEWABLE ENERGY POWER PLANT AND RELATED STORAGE TANK FARMS) ON PORTION 46 OF THE REMAINDER OF FARM 58 WALVIS BAY, ERONGO REGION**

Green Earth Environmental Consultants have been appointed to attend to and complete an Environmental Impact Assessment and Environmental Management Plan (EMP) to obtain an Environmental Clearance Certificate as per the requirements of the Environmental Management Act (No. 7 of 2007) and the Environmental Impact Assessment Regulations (GN 30 in GG 4878 of 6 February 2012) to construct and operate a green energy complex (including a 300,000 BPSD Oil Refinery, 500MW Renewable Energy Power Plant and related Storage Tank Farms) on Portion 46 of the Remainder of Farm 58 Walvis Bay, Erongo Region.

**Name of proponent:** ISF Trading Enterprises (Pty) Ltd

**Project location and description:** It is the intention of the Proponent to develop a Green Energy Complex which will include a 300,000 BPSD Modular Oil Refinery, 500MW Renewable Energy Power Plant including a BESS (Battery Energy Storage System), related Storage Tank Farms, Warehouses and Offices on Portion 46 of the Remainder of Farm 58, Walvis Bay, Erongo Region. Walvis Bay Town Council conditionally allocated Portion 46 (s305,2795 ha) to the Proponent for the proposed project. The final transfer of the portion to the Proponent is subject to obtaining an Environmental Clearance as well as other statutory approvals. A locality plan of the site is displayed at the Walvis Bay Municipal Notice Board or available from the offices of Green Earth Environmental Consultants at Bndgview Offices, No. 4 Dr. Kwame Nkrumah Avenue, Klein Windhoek.

Interested and affected parties are hereby invited to register in terms of the assessment process to give input, comments, and opinions regarding the proposed project. A Background Information Document will be available to the I & AP's who registered. A public meeting will be held on 24 May 2024 at 10h00 at the Narrawille Community Hall.

The last date for comments and/or registration is 31 May 2024. Contact details for registration and further information:

Green Earth Environmental Consultants  
 Contact Persons: Charlie Du Toit/Carsten van der Walt  
 Tel: 0811273145  
 E-mail: [owners@greenearthnambibia.com](mailto:owners@greenearthnambibia.com)

## NOTICE IN TERMS OF THE URBAN AND REGIONAL PLANNING ACT, 2018

Please take note that Stewart Planning – Town & Regional Planners intends to apply, on behalf of registered owner, to the Municipal Council of Swakopmund and the Urban and Regional Planning Board for permission for the following:

**Rezoning of Erf 4225 Swakopmund Extension 13 from Single Residential with a density of 1 dwelling unit per 600m<sup>2</sup> (1:600m<sup>2</sup>) to General Residential 1 with a density of 1 dwelling unit per 250m<sup>2</sup> (1:250m<sup>2</sup>) with consent to operate a Residential Guest House while the rezoning is in progress.**

The abovementioned application is submitted in terms of the Urban and Regional Planning Act, 2018 (Act No.5 of 2018) and the Swakopmund Zoning Scheme, as amended.

- Please take note that –
- (a) the complete application lies open for inspection at the Town Planning Department of the Municipality of Swakopmund situated on the corner of Rakoloka Street and Daniel Kambo Avenue, or can be downloaded from [www.sp.com.na/projects](http://www.sp.com.na/projects).
  - (b) any person having comments or objections to the application, may in writing lodge such objections and comments, together with the grounds thereof, with the Chief Executive Officer of the Municipality of Swakopmund and with Stewart Planning within 14 days of the last publication of this notice;
  - (c) Registration and written comments or objections must be submitted before or on 17:00 Thursday, 6 June 2024.

<b>Applicant:</b> Stewart Planning Town & Regional Planners PO Box 2095 Walvis Bay <a href="mailto:maria@sp.com.na">maria@sp.com.na</a> 064 280 773	<b>Local Authority:</b> Chief Executive Officer Municipality of Swakopmund P.O. Box 53 Swakopmund Namibia <a href="mailto:jheita@swakmun.com.na">jheita@swakmun.com.na</a>
---	--

## NOTICE IN TERMS OF THE URBAN AND REGIONAL PLANNING ACT, 2018

Please take note that Stewart Planning – Town & Regional Planners intends to apply, on behalf of the registered owner, to the Municipal Council of Walvis Bay for consent for the following application:

**Erf 3151 Walvis Bay: Rezoning from Single Residential (1:300m<sup>2</sup>) to General Residential 2 (1:300m<sup>2</sup>) with consent to operate a Guest House while the rezoning is in progress.**

**The deletion and alteration of the title deed conditions of erf 3151 Walvis Bay**

The intention is to develop a Guest House of a maximum of 10 bedrooms (including the existing single storey dwelling house) partially in the existing single storey dwelling house and partially in new single and double storey buildings to the side and back/rear of the existing single storey dwelling house. On site parking for the 10-bedroom Guest House will be provided on site: on-site parking requirement of 2 parking bays plus 1 parking bay per bedroom = 12 parking bays.

These development proposals require to rezone erf 3151 Walvis Bay to General Residential 2, to apply for consent for a Guest House in the proposed zoning. The deletion and alteration of the title deed conditions of erf 3151 Walvis Bay is also part of this application.

The abovementioned application is submitted in terms of the Urban and Regional Planning Act, 2018 (Act No.5 of 2018) and the Walvis Bay Zoning Scheme, as amended.


- Please take note that –
- (a) the complete application lies open for inspection at the Town Planning Section of the Walvis Bay Municipality, Civic Centre, Nangolo Mbumba Drive. The application is also available to download from [www.sp.com.na/projects](http://www.sp.com.na/projects).
  - (b) any person having comments or objections to the proposed application, may in writing lodge such comments, representations or objections together with the grounds thereof, with the Chief Executive Officer of the Walvis Bay Municipality and with Stewart Planning within fourteen (14) days of the last publication of this notice;
  - (c) Written comments, representations or objections must be submitted before or on 17:00 Friday 7 June 2024 to the addresses provided below.

<b>Local Authority:</b> Chief Executive Officer Municipality of Walvis Bay Private Bag 5017, Walvis Bay <a href="mailto:townplanning@walvisbaycc.org.na">townplanning@walvisbaycc.org.na</a>	<b>Applicant:</b> Stewart Planning Town & Regional Planners P.O. Box 2095, Walvis Bay <a href="mailto:bruce@sp.com.na">bruce@sp.com.na</a>
---	---

## APPENDIX B: LIST OF INTERESTED AND AFFECTED PARTIES

Email addresses:
<a href="mailto:cm@rent-a-drum.com.na">cm@rent-a-drum.com.na</a>
<a href="mailto:admin.projects@rent-a-drum.com.na">admin.projects@rent-a-drum.com.na</a>
<a href="mailto:t.provendier@rent-a-drum.com.na">t.provendier@rent-a-drum.com.na</a>
<a href="mailto:E.Louw@rent-a-drum.com.na">E.Louw@rent-a-drum.com.na</a>
<a href="mailto:Gys@rent-a-drum.com.na">Gys@rent-a-drum.com.na</a>
<a href="mailto:pintojoao221@gmail.com">pintojoao221@gmail.com</a>
<a href="mailto:silvy@kosmos.com.na">silvy@kosmos.com.na</a>
<a href="mailto:sales@effektivnrg.com">sales@effektivnrg.com</a>
<a href="mailto:mike@effektivnrg.com">mike@effektivnrg.com</a>
<a href="mailto:info@ikhayasomandlagroup.com">info@ikhayasomandlagroup.com</a>
<a href="mailto:pr@walvisbaycc.org.na">pr@walvisbaycc.org.na</a>
<a href="mailto:customercare@walvisbaycc.org.na">customercare@walvisbaycc.org.na</a>
<a href="mailto:smuller140@gmail.com">smuller140@gmail.com</a>
<a href="mailto:elbie@concord.com.na">elbie@concord.com.na</a>
<a href="mailto:support@erongored.com.na">support@erongored.com.na</a> ;
<a href="mailto:jlawrence@walvisbaycc.org.na">jlawrence@walvisbaycc.org.na</a> ;
<a href="mailto:enambahu@walvisbaycc.org.na">enambahu@walvisbaycc.org.na</a> ;
<a href="mailto:okakero@walvisbaycc.org.na">okakero@walvisbaycc.org.na</a> ;
<a href="mailto:jmanale@walvisbaycc.org.na">jmanale@walvisbaycc.org.na</a> ;
<a href="mailto:duushona@walvisbaycc.org.na">duushona@walvisbaycc.org.na</a> ;
<a href="mailto:jan@seal.com.na">jan@seal.com.na</a> ;
<a href="mailto:jesterhuizen@walvisbaycc.org.na">jesterhuizen@walvisbaycc.org.na</a> ;
<a href="mailto:info@namcor.com.na">info@namcor.com.na</a> ;
<a href="mailto:customercare@namport.com.na">customercare@namport.com.na</a> ;
<a href="mailto:procurement@namport.com.na">procurement@namport.com.na</a> ;
<a href="mailto:dimari@erongorc.gov.na">dimari@erongorc.gov.na</a> ;
<a href="mailto:shoebes@erongorc.gov.na">shoebes@erongorc.gov.na</a> ;
<a href="mailto:diana@namcor.com.na">diana@namcor.com.na</a> ;
<a href="mailto:jdiergaardt@ikhayasomandlagroup.com">jdiergaardt@ikhayasomandlagroup.com</a> ;
<a href="mailto:scyofina@ikhayasomandlagroup.com">scyofina@ikhayasomandlagroup.com</a> ;
<a href="mailto:marcellino@318accounting.com">marcellino@318accounting.com</a> ;

## APPENDIX C: COMMENTS RECEIVED

Comments Received
<p>From: Elbie Schultz &lt;<a href="mailto:elbie@concord.com.na">elbie@concord.com.na</a>&gt; Sent: Friday, May 17, 2024 8:50 AM To: <a href="mailto:charlie@greenearthnamibia.com">charlie@greenearthnamibia.com</a> Subject: Oil Refinery planed for Walvis Bay.</p> <p>Good day Charlie</p> <p>Hope you are well. My name is Elbie Schultz and I'm working for Concord Plant &amp; Crane Hire Namibia, we are locating in Walvis Bay &amp; Lüderitz but operator all over Namibia and South Africa.</p> <p>A couple of days ago there was a mews report over the radio about a planned Oil refinery planed for Walvis Bay and that Green Earth is busy with the environmental impact study.</p> <p>I just want to follow up, who can I contact to get more information regarding this project?</p> <p>Hope to hear from you soonest.</p> <p>Regards</p> <div style="display: flex; justify-content: space-between; align-items: flex-start;"><div style="text-align: center;"><p><b>CONCORD</b> NAMIBIA <a href="mailto:info@concordcranes.com">info@concordcranes.com</a></p></div><div style="text-align: right;"><p>Elbie Schultz Sales Manager T: +264 64 274 400 M: +264 81 142 3434 E: <a href="mailto:elbie@concord.com.na">elbie@concord.com.na</a></p></div></div> <hr/> <div style="display: flex; justify-content: space-between; align-items: center; background-color: #f0f0f0; padding: 5px;"><span><small>a Bud Group Company</small></span><span><small>Proudly ISO45001 certified.</small></span></div>
<p>From: Jaco Swart &lt;<a href="mailto:cm@rent-a-drum.com.na">cm@rent-a-drum.com.na</a>&gt; Sent: Tuesday, 21 May 2024 9:23 am To: <a href="mailto:carien@greenearthnamibia.com">carien@greenearthnamibia.com</a> Cc: Severine Bower &lt;<a href="mailto:admin.projects@rent-a-drum.com.na">admin.projects@rent-a-drum.com.na</a>&gt;; THIERRY PROVENDIER &lt;<a href="mailto:t.provendien@rent-a-drum.com.na">t.provendien@rent-a-drum.com.na</a>&gt;; Eduan Louw &lt;<a href="mailto:E.Louw@rent-a-drum.com.na">E.Louw@rent-a-drum.com.na</a>&gt;; Gys Louw &lt;<a href="mailto:Gys@rent-a-drum.com.na">Gys@rent-a-drum.com.na</a>&gt; Subject: EIA - Registration - Green Energy complex</p> <p>Good day</p> <p>Can we please register as an interest party in this project</p>

## Green energy complex

REF: ISF Trading Enterprises (Pty) Ltd  
FOR: Public information meeting for IAPs as part of EIA and EMP to obtain an Environmental Clearance Certificate for the construction and operation of a green energy complex (including a 300,000 BPSD modular oil refinery, 500MW renewable energy power plant incl. a Battery Energy Storage System and related storage tank farms, warehouses and offices) on 305,2795ha Portion 46 of the Remainder of Farm #58 / WALVIS BAY, Narraville Community Hall  
AT: Green Earth Environmental Consultants, Windhoek, ph. 081-1273145, [carien@greenearthnamibia.com](mailto:carien@greenearthnamibia.com); Charlie du Toit or Carien van der Walt; M. Walvis Bay (locality plan)  
DUE: 24-May-24 10:00

**Jaco Swart**  
Commercial Manager

+264 81 277 0524    [www.rent-a-drum.com.na](http://www.rent-a-drum.com.na)    [cm@rent-a-drum.com.na](mailto:cm@rent-a-drum.com.na)

Sam Nujoma Drive, next to Tony Rust Race Track - Windhoek P: +264 61 244 097

@RentADrum

From: Joao Pinto <[pintojoao221@gmail.com](mailto:pintojoao221@gmail.com)>  
Sent: Tuesday, 21 May 2024 7:07 am  
To: [carien@greenearthnamibia.com](mailto:carien@greenearthnamibia.com)  
Subject: Interested attendee & affected party registration request.

Dear Carien Van Der Walt.

Please kindly register my attendance as an interested & affected party for this public meeting taking place on 24 May 2024 at Narraville Community Hall, and please email me the background information document (BID) for the event, thank you in advance.

Your prompt response will be highly appreciated.

Yours faithfully  
Mr.Pinto J.V.C  
Email: [pintojoao221@gmail.com](mailto:pintojoao221@gmail.com)  
+264814114151

From: Silvy Diergaardt <[silvy@kosmos.com.na](mailto:silvy@kosmos.com.na)>  
Sent: Wednesday, 15 May 2024 10:17 am  
To: [carien@greenearthnamibia.com](mailto:carien@greenearthnamibia.com)  
Subject: Interested Party Registration

Good day Carien,

I hope you are doing well. Would you please be so kind as to register the Kosmos team as an interested party in the Environmental Impact Assessment to obtain an environmental clearance to construct and operate a Green Energy Complex in

Walvis Bay.

I hope to hear from you soon.

email: [kosmos@nuus.com.na](mailto:kosmos@nuus.com.na)

no: 061 255 985

Kind Regards



From: sales@effektivnrg.com <sales@effektivnrg.com>

Sent: Sunday, 19 May 2024 8:22 am

To: carien@greenearthnamibia.com

Cc: mike@effektivnrg.com; ISF Trading Enterprises  
<info@ikhayasomandlagroup.com>

Subject: ISF Public meeting: GEC & Refinery

Good morning Carien,

I trust this mail finds you well.

I am Llewelyn Majiedt, Namibian Sales and Operational Representative of Effektiv NRG (PTY) Ltd and Genesis Water and Energy (PTY) Ltd. The organization who produces/manufacturers the GWE 2.5MW Genset.

We have been busy with formulation activities with ISF for a number of months now, and we are extremely excited that the GEC + Refinery Project is finally gaining traction.

With this, we would firstly like to confirm our attendance of the public meeting, scheduled for the 24th of May 2024. Furthermore, could you kindly provide us with:

BID documentation for us to prepare ourselves accordingly.

Advise which official parties/entities would also be attending or is scheduled to attend the public meeting?

Trust that we will receive the above information in good order and time.

Regards

Llewelyn Majiedt

+264814768773

From: Sandra Müller <smuller140@gmail.com>

Sent: Saturday, 11 May 2024 11:07 am

To: carien@greenearthnamibia.com

Subject: EIA for oil refinery etc at Walvis Bay

Dear Carien

Could you please send me the BID? I'd like to know more about this project.

Kind regards

S Muller

Swakopmund

From: marcellino@318accounting.com <marcellino@318accounting.com>

Sent: Wednesday, 22 May 2024 10:44 am

To: carien@greenearthnamibia.com

Subject: Register as Interested Party - ISF

Dear Carien

I have been informed to register as an interested party with your organization for the invitation I received from Ikayah Somandla Family Trading Enterprises (Pty) Ltd for the meeting scheduled on the 24th May 2024 in Walvis Bay.

Warm regards

M E Mouton (NIPA)

Professional Accountant Namibia

Practice number: 10204

P O Box 27429

Windhoek

Namibia

Website: [www.318accounting.com](http://www.318accounting.com)

Office: +264 81 804 2264

Cell: +264 81 144 1777



Dear Green Earth Consultants

I hereby request to be registered as an I&AP for the EIA:

-Environmental Impact Assessment to obtain an Environmental Clearance to construct and operate a green energy complex on Portion 46 of the Remainder of Farm 58, Walvis Bay, Erongo Region, as issued in your public notice in the New Era newspaper on the 15th of May 2024

Would you please forward me the BID and the sites coordinates if not stated in the BID

Regards

Ndelimona lipinge

EIA Tracking and Monitoring in Namibia (EIA Tracker)

Namibian Environment and Wildlife Society

Cell:+264814138822

<https://eia-tracker.org.na>

[Like us on Facebook](#)

From: Johann Otto <[otto@sp.com.na](mailto:otto@sp.com.na)>

Sent: Wednesday, 29 May 2024 5:02 pm

To: [carien@greenearthnamibia.com](mailto:carien@greenearthnamibia.com)

Subject: Portion 46 of Rem. Farm 58: Green Energy Complex: Request to register as an I&AP

Hi Carien,

Ek hoop en vertrou dit gaan goed.

Ek stel belang om te registreer as 'n "I&AP" vir die voorgestelde projek op Gedeelte 46 van die restant van Plaas 58, Walvisbaai, Erongo Streek. Stuur vir my asseblief die "BID" aan, baie dankie.

Groete,  
Johann

Johann Otto  
Town Planner



122 Sam Nujoma Avenue | First Floor, 122 On Main | PO Box 2095 Walvis Bay  
Tel: (064) 280 773 | Email: [otto@sp.com](mailto:otto@sp.com).na | Website:  
[www.sp.com.na](http://www.sp.com.na)

From: chamwe kaira <[chamwe@gmail.com](mailto:chamwe@gmail.com)>  
Sent: Monday, 3 June 2024 3:47 pm  
To: [carien@greenearthnamibia.com](mailto:carien@greenearthnamibia.com)  
Subject: Green Energy Complex

Good afternoon,  
Please register me as an interested party.  
Thanks

Chamwe Chowa Kaira  
Mobile: +264810379954  
Email: [chamwe@gmail.com](mailto:chamwe@gmail.com)

From: Nadine Kohlstaedt <[info@sciswk.com](mailto:info@sciswk.com)>  
Sent: Friday, 31 May 2024 8:19 am  
To: [carien@greenearthnamibia.com](mailto:carien@greenearthnamibia.com)  
Subject: EIA registration

Dear Sir/ Madam,  
Please register me as EIAP for the EIA in Walvis Bay.  
Kind regards  
N. Kohlstaedt

# APPENDIX D: POWER POINT PRESENTATION AT PUBLIC MEETING

**ENVIRONMENTAL IMPACT ASSESSMENT TO CONSTRUCT AND OPERATE A GREEN ENERGY COMPLEX (INCLUDING A 300,000 BPSD OIL REFINERY, 300MW RENEWABLE ENERGY POWER PLANT AND RELATED STORAGE TANK FARMS) ON PORTION 46 OF THE REMAINDER OF FARM 58 WALVIS BAY, ERONGO REGION**

**PROGRAM:**

- Rules of Meeting
- Progress of this Meeting
- Background on Project
- Green Energy Complex
- Comments, questions and answers
- Way Forward
- Conclusion / Closing Remarks

**Rules of the meeting:**

- One question/speaker at a time
- Speaker to identify himself/herself and state point of interest
- Play the ball not the man

**Purpose of this Meeting**

- Provide an understanding of the current project and how it will affect the environment
- Role of the Environmental Foundation
- Identify (to the Environmental Foundation) and address Environmental Impact of the proposed project
- Provide an opportunity for the public to voice their views and concerns
- Identify and manage alternatives that may have a more viable and socially acceptable outcome in terms of significant impacts
- Provide an Environmental Management Plan to the project
- Provide an Environmental Management Plan to the project

**Background on Project:**

It is the intention of the Proponent to develop a Green Energy Complex which will include a 300MW BPSD Modular Oil Refinery 300MW Renewable Energy Power Plant including a 3000 (battery energy storage system), related storage tank farms, transmission and cables on Portion 46 of the Remainder of Farm 58, Walvis Bay, Erongo Region. Walvis Bay Town Council conditionally allocated Portion 46 (Farm 58) to the Proponent for the proposed project. The final transfer of the portion to the Proponent is subject to obtaining an Environmental Clearance as well as other statutory approvals.

**The objectives of the green energy complex for Walvis Bay include amongst others:**

- Reducing the cost that the Government and people are currently spending on importing refined products to bulk the demand of 'green' fuel for each year.
- The provision of affordable electricity and potable water.
- Reducing port congestion in the Walvis Bay harbour and enable linking the harbour with Namibia and the rest of Africa.
- The creation of new skilled and unskilled employees.
- The transfer of skills.

**The integrated Green Energy Complex will consist of the following:**

- 300MW Nano-Ton Waste-to-Energy Power Plant.
- 300,000 BPSD Modular Oil Refinery
- Crude & Petroleum Products Tank Farm.
- Office Infrastructure.
- 4,000m<sup>3</sup> / day Sea / Beachside Water Desalination Plant

**Location Plan of the Integrated Green Energy Complex**

The site is located on Portion 46 of the Remainder of Farm 58, Walvis Bay, Erongo Region.

- 300MW Nano-Ton Waste-to-Energy Power Plant
- 300,000 BPSD Modular Oil Refinery
- Crude & Petroleum Products Tank Farm
- Office Infrastructure
- 4,000m<sup>3</sup> / day Sea / Beachside Water Desalination Plant

The proposed development is subject to a number of other statutory approvals and is subject to the approval of the Environmental Clearance Act of 2010 and the Environmental Management Act of 2017.

The following table provides an overview of the statutory approvals required for the proposed development.

Statutory Approval	Responsible Authority	Current Status
Environmental Clearance	Ministry of Environment, Forestry and Fisheries	Application submitted
Water Use License	Ministry of Water and Irrigation	Application submitted
Water Allocation License	Ministry of Water and Irrigation	Application submitted
Water Use License	Ministry of Water and Irrigation	Application submitted
Water Allocation License	Ministry of Water and Irrigation	Application submitted
Water Use License	Ministry of Water and Irrigation	Application submitted
Water Allocation License	Ministry of Water and Irrigation	Application submitted
Water Use License	Ministry of Water and Irrigation	Application submitted
Water Allocation License	Ministry of Water and Irrigation	Application submitted
Water Use License	Ministry of Water and Irrigation	Application submitted
Water Allocation License	Ministry of Water and Irrigation	Application submitted

**Site details:**

The Proponent applied for a portion of land located on Farm 58, Walvis Bay. Walvis Bay Town Council conditionally allocated Portion 46 (Farm 58) to the Proponent for the proposed project. The final transfer of the portion to the Proponent is subject to obtaining an Environmental Clearance as well as other statutory approvals.

See Maps below showing the locality of the site:

**SUPPORTING RULES, SERVICES AND INFRASTRUCTURE PROVISION**

**Water:**

The Project will obtain water from the Sea via a tank trucked to the site of the proposed development. The water will be used for the proposed development.

**Electricity:**

The Project will obtain electricity from the Grid via a tank trucked to the site of the proposed development. The electricity will be used for the proposed development.

**Waste:**

The Project will obtain waste disposal services from the Grid via a tank trucked to the site of the proposed development. The waste will be used for the proposed development.

**Infrastructure:**

The Project will obtain infrastructure services from the Grid via a tank trucked to the site of the proposed development. The infrastructure will be used for the proposed development.

**Water:**

The Project will obtain water from the Sea via a tank trucked to the site of the proposed development. The water will be used for the proposed development.

**Electricity:**

The Project will obtain electricity from the Grid via a tank trucked to the site of the proposed development. The electricity will be used for the proposed development.

**Waste:**

The Project will obtain waste disposal services from the Grid via a tank trucked to the site of the proposed development. The waste will be used for the proposed development.

In terms of the Environmental Management Act (EMA) of 2017 and the Environmental Impact Assessment Regulations (EIA) of 2017, the Proponent is required to submit an Environmental Management Plan (EMP) to the relevant authority for approval.

**ENERGY GENERATION, TRANSMISSION AND STORAGE ACTIVITIES**

- The construction of facilities for
- (a) the generation of electricity
- (b) the transmission and supply of electricity
- (c) refining of gas, oil and petroleum products.

**Methodology:**

- Desktop sensitivity assessment
- Site assessment (site visit)
- Impact Assessment of stakeholders
- Assessment of impacts
- EMP to mitigate impacts

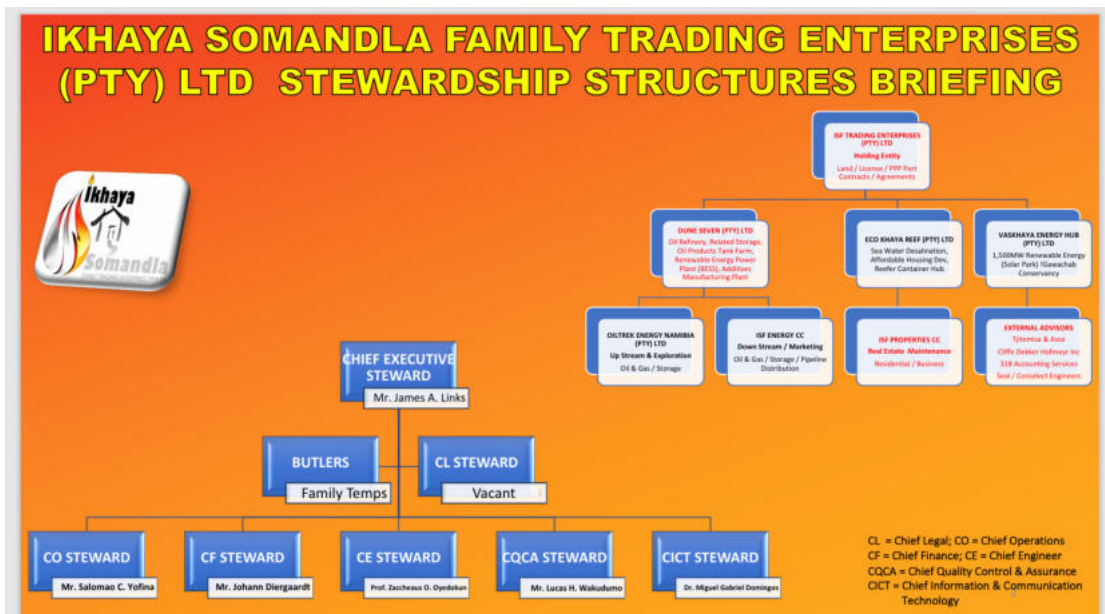
**Comments/Questions/ Discussions**

**The way forward:**

- Completion of assessment of receiving environment
- Drafting of the EIA
- Drafting of the EMP
- Submission of EIA and EMP to Commissioner
- Await Commissioner's resolution
- Time Frame = 3 months

**Conclusion**

# APPENDIX E: POWER POINT PRESENTATION FROM PROPONENT



# WHAT ARE WE BRINGING?: WALVIS BAY MODULAR GREEN ENERGY COMPLEX



- ❖ Oil & Gas Exploration Companies in Namibia, are in the process of doing various exploration projects for oil and gas and we envisage that the development of an oil refinery would be very critical for the long-term oil and gas development of our country, taking into special account the recently crude oil discoveries announced in the Namibian oil & gas fields by ReconAfrica, TotalEnergies, and Shell.
- ❖ Additives / Lubricants Manufacturing Plant.
- ❖ Added 500MW battery energy storage system (BESS) will be established in Erongo Region.
- ❖ To augment the water supply and distribution demands, a 4,000m<sup>3</sup> / day desalination plant is planned. This project will improve the water resilience of Walvis Bay, and allow for further town and industrial developments.
- ❖ To complete the infrastructure, appetite for the Walvis Bay-North port development has been registered with NAMPORT.

## BENEFITS TO THE LOCAL NAMIBIANS – SCR



- Assist financially and technically in the Township development;
- Social Corporate Responsibility to be done within the framework of a registered community trust;
- Ensure employment opportunities get availed to the local community, and skills transfer is imbedded throughout the project development cycle;
- Constant interaction with the Walvis Bay Municipality and the community about ongoing project activities;
- Local content in the form of Services and Supplies will form an integral part of project developments as per Government directives;
- Government projects that will compliment this development, will be supported technically, and financially where possible.

### SOCIO-ECONOMIC IMPACT



### SOCIO-ECONOMIC IMPACT

#### CONSTRUCTION / DEVELOPMENT

#### PERMANENT OPERATIONS

Development / Construction / Implementation Phase					Operations, Maintenance, and Growing Phase				
		Local (mostly surrounding communities)	Foreign Persons	Walvis Bay Refinery Total Estimated Jobs during Construction			Local (mostly surrounding communities)	Foreign Persons	Walvis Bay Refinery Total Estimated Permanent Jobs Created
Project Managers	Skilled	3	5	8	Plant Manager (s)	Skilled	4	6	10
Electric Engineers	Skilled	5	8	13	Maintenance Workers	Skilled	250	700	950
Civil Engineers	Skilled	5	4	9	Engineers (Chemical, Electrical, Civil etc.)	Skilled	20	60	80
Draftsman	Skilled	2	6	8	Artisans	Skilled	55	80	135
Computer Scientists (Control System Engineers)	Skilled	1	2	3	Computer Scientists (Control System Engineers)	Skilled	8	12	20
Governmental Regulators (EPA)	Skilled	4	0	4	Admin Employees	Skilled	155	25	180
Geologist	Skilled	1	1	2	Planning / Scheduling Engineer (s)	Skilled	4	8	12
Head of Safety	Skilled	1	0	1	Technical Sales Engineers	Skilled	12	22	34
Health/Safety/Environmental Engineer	Skilled	4	12	16	General workers	Non-skilled to Semi-skilled	1550	90	1640
Site Manager	Skilled	2	1	3	Draftsman	Semi-Skilled	30	40	70
Foreman	Skilled	3	1	4	Cleaning Workers	Non-skilled	60	0	60
Electrical worker	Non Skilled	300	1200	1500	Security	Non-skilled	265	40	305
Construction Workers	Non Skilled	8600	1800	10400	<b>Total</b>		<b>2413</b>	<b>1083</b>	<b>3496</b>
Machine Operator	Skilled	20	40	60					
<b>Total</b>		<b>8951</b>	<b>3080</b>	<b>12031</b>					

- ✓ +/-2,500 direct personnel (full- and part-time) during construction period (will depend on local availability of skills)
- ✓ Initially About 3,500 indirect jobs when operations commence. Efficient Operating of the business will require permanent 6,500 direct employment.
- ✓ Local enterprises development to feed into the value chain, will be in excess of 4,000 enterprises.



# TECHNICAL DEVELOPMENT OBJECTIVES



- ✓ 300,000BPD Modular Oil Refinery & Tank Farm
- ✓ 500MW Renewable Energy Power Plant
- ✓ 4,000m<sup>3</sup>/day Containerized & Mobile Sea & Brackish Water Desalination Plant
- ✓ 350 Point Reefer Container Hub
- ✓ Bulk Petroleum Products Storage Facilities
- ✓ Additives / Lubricants Manufacturing Plant (Towards CO2 Emissions Compliance)
- ✓ Aviation & Energy Schools of Excellence (Partnering / Establishing)
- ✓ PPP-BOT Walvis Bay-North Port Development



## DEVELOPMENT SITE LAYOUT



## GLOBAL CORPORATE AWARDS



AWARDED  
Most Innovative Construction & Energy Investment Company 2023



AWARDED  
Most Pioneering Shipyard & Port Services Enterprise – Namibia 2023



AWARDED  
Best Oil & Gas Infrastructure Development Enterprise 2024

## LOCAL INDUSTRY EMPOWERING ASSOCIATES

- WBCFC– (Grass Roots Authority)
- WALVIS BAY MUNICIPALITY – (Local Authority)
- ||KHARAS REGIONAL COUNCIL – (Regional Authority)
- NAMCOR; NAMPORT; ECB / NAMPOWER – (Semi-Government Organizations)
- MIN OF MINES; TRADE; WORKS & TRANSPORT; FINANCE; BON – (Central Government)
- VASMA TRADING (PTY) LTD – (Finance Partner - Windhoek)
- LEGAL – Tjitemisa & Asoc (Local); CDH (Foreign)
- ACCOUNTING – 318 Accounting Executives
- Seal Consulting Engineers CC – (Consulting/Civil Engineering - Walvis Bay)
- Conselect Engineering (Pty) Ltd. – (Electric Engineering - Walvis Bay)
- Green Earth Environmental Consultants CC. – (ECC - Windhoek)
- Du Toit Town Planners CC – (Town Planning Services - Windhoek)
- Smart Eko Water LLC – (Sea & Brackish Water Desalination - Europe, Bulgaria)
- BESS (Still evaluating GWE proposal received)
- ANPME – (Bankable Feasibility Studies - Europe, Portugal)
- ENGL MINERALS DMCC – (EPC Contractor - UAE, Dubai)
- VMF Technologies – (Upstream Oil and Gas Industry)



## The Walvis Bay Municipality in Support of FDI – SDI

**Municipality of Walvis Bay**  
 Office: 10000  
 P O Box 27278  
 Windhoek  
 Namibia

Dear Sir/Madam:  
 Email Address: [info@walvisbay.nam](mailto:info@walvisbay.nam)

**Subject:** Application for reservation of industrial land at the heavy industrial area behind Zone 7, Farm 10, for the construction of Green Energy Complex

**Ref. No:** 17080

Please refer to the above matter.

We are pleased to inform you that Council at its Council Meeting which was held on 08 September 2022 resolved under item 11.6 (b) (ii) as follows:

- That conditional approval be granted that a 5,868,217 m<sup>2</sup> of Portion 40 of Farm 10 be reserved for Ikhaya Somandia Trading Enterprise (Pty) Ltd (the applicant) for the envisaged Green Energy Complex.
- That the applicant adhere to tabulation of a 5,868,217 m<sup>2</sup> of Portion 40 of Farm 10 as set out.
- That the applicant at its own risk and on its own cost, submit Environmental Impact Assessment (EIA), Environmental Management Plans (EMPs), Site Management Plans (SMPs) and any other necessary assessments, studies and programs, and obtain approvals from the Environmental Commission.
- That the applicant submit within twelve (12) months after the resolution approved the following:
  - The Environmental Clearance;
  - Feasibility study whether the project is viable; and
  - Financial feasibility that forms are available to fund and complete the project.
- That the method of valuation and all other conditions including but not limited to those considered with this submission.
- That the applicant update Council on the progress of the project every four months.

Please address all correspondence to the Chief Executive Officer.

(7) That item (2) and (4) above has been completed, a further comprehensive report with recommendations be submitted to Council for consideration.

(8) That in the event the applicant fails to perform in accordance with (2), (3) and (4) above the conditional approval be regarded as null and void and all the further steps and others.

We request that Ikhaya Somandia Trading Enterprise (Pty) Ltd acknowledge receipt and accept the conditions of this letter, within fourteen (14) days from date thereof.

Yours faithfully,  
  
**Jack Mwanza**  
 Manager: Planning & Properties

**Municipality of Walvis Bay**  
 Office: 10000  
 P O Box 27278  
 Windhoek  
 Namibia

The Chief Executive Officer  
 Ikhaya Somandia Trading Enterprise  
 P O Box 27278  
 Windhoek  
 Namibia

Yours faithfully,  
  
**Jack Mwanza**  
 Acting General Manager: Community and Economic Development

## APPEAL FOR SUPPORT TO THIS SDI PROJECT



- Promote the project locally, regionally, and nationally.
- Provide updated community databases of existing manpower with qualifications, and required qualifications.
- Organize the community data for future social assistance from the Investor / Developer.
- Educate the community to be ready for training & employment.
- Propose social actions with direct impact to be executed in the community.
- Convene regular community project update meetings, and submit community input related to the project development, to the Investor / Developer.
- Maintain a healthy relationship between the Community and the Project Investor / Developers at all times.

## ESTIMATED DEVELOPMENT TIMELINE

### Phased Roll-Out of Construction / Development Activities:

### Activity Duration:

➤ Feasibility Studies, ECC & Land Purchase	12 Months
➤ Refined Fuel Products Storage Facility	18 Months
➤ Walvis Bay-North	24 Months
➤ Township & Community Health Centre Development	48 Months
➤ Airport Upgrade & School of Excellence	18 Months
➤ Power Plant (Renewable Energy) & Desalination Plant	15 Months
➤ Tank Farm & Additives / Lubricants Plant	22 Months
➤ Oil Refinery	24 Months
➤ Pipeline Network to the Port	18 Months
➤ Total Months	199 Months

*Activities will overlap with each other.*

**Ikhaya Somandla**  
FAMILY TRADING ENTERPRISES (PTY) LTD

**JAMES A. LINKS**  
CHIEF EXECUTIVE STEWARD / GROUP EXECUTIVE CHAIRMAN

PO BOX 27278, WINDHOEK, NAMIBIA  
No.6 Feld Street, Erf 1117, Bonsec Heights, Unit 2, Windhoek, Namibia

+264 (0) 81 955 5666 (Office)  
+264 (0) 81 576 5897 / +264 (0) 81 128 7399

[www.ikhayasomandiagroup.com](http://www.ikhayasomandiagroup.com)

**THANK YOU**

YOUR NEXT FEW MINUTES COULD  
**CHANGE THE WORLD**

**This is Our Story for God's Glory !!!**  
**QUESTIONS...**

**Ikhaya Somandla**  
FAMILY TRADING ENTERPRISES (PTY) LTD

**Jesus said: Take what I have given you and change the world!**

## APPENDIX F: ATTENDANCE REGISTER



Date: 24 May 2024 - 10h00

Attendance Register: ISF Trading Enterprises (Pty) Ltd

Name & Surname:	Nature of Interest/ Impact:	Contact Details (phone number and email address):	Signature:
Carien van der Walt	Project	0813891705 carien@greenearth namibia.com	
Jan Erikson	Project	0811284118 jan@sea.com.na	
João Pinto	Project	0814114151 pntojac22@gmail.com	
Terence Smeda	Project	0817566272 tsmeda@gmail.com	
Hugo Jacinto	VASMA-Trading	0815591317	

1

Name & Surname:	Nature of Interest/ Impact:	Contact Details (phone number and email address):	Signature:
Vasco Manuel Bues	VASMA Trading	0815591315	
Salomao C. YOFINA	ISF TRADING	0812233999	
WISEMAN M OLATZI	CONSELECT CONSULTING ENGINEERS	wisemanolatzi74@gmail.com 0811280260	
JAMES ALVIN LINKS	ISF TRADING	0815765897	
Miguel Gabriel Dourado	AMIKÉ'S	+244927352498	
Lindwyn Mndiro	OFFELTU NRY	+264 814768713	
MARCILINDO C. MOUTEN	318 ACCOUNTING EXECUTIVE	+264 811641777	
Mika Smith	CIWE POWER	+27 742789277	

Name & Surname:	Nature of Interest/ Impact:	Contact Details (phone number and email address):	Signature:
JOTHAN DIRCANKOT	JEF Project	0912276468 chuan1212@gmail.com jdircankot@gmail.com	
LEON BOU	JEF Project	0912300573 leon.a.bou@gmail.com	
Robert Houw	Rest-A-Dream	0512452958 rohan@rota-dream.com	
Edwin Bok	EMB Engineering	0814420284 edwinbok@gmail.com	
LOVISA HAILAULA	MUNICIPALITY OF WALUIS BAY	064-214306	
ADRIANO DE KOE	Quali-Tim Fairway of Singapore	dekoeca@uway.net sthen@dekoeca@gmail.com	
Steven Murphy	Qual-Tim Sionery & Shipwright	dekoeca@uway.net Stevenhenrich@gmail.com	
Theodelus Hofeni	Wk Card youth Empowerment	wecareyouththetheodelus@gmail.com	Theodelus.H
Suzanne Herman	W/ Bay. Resident	Sherman610@gmail.com 0512707948	
Elbie Schultz	Concord Plant and Core Hire - Machine Rental	elbie@concord.com 0811423434	

Name & Surname:	Nature of Interest/ Impact:	Contact Details (phone number and email address):	Signature:
Ms. Rainer Kekoro	Photographer	rkekoro@yahoo.com 0814992078	
CHARISE DU TOIT	GREEN EARTH ENVOI	0811273145 charlie@greenearthnambui.com	
Zac Oyedokun	JEF	0812720556 Zacoyedokun@gmail.com	

## APPENDIX G: PHOTOS OF PUBLIC MEETING







## APPENDIX H: CURRICULUM VITAE OF CHARLIE DU TOIT

1. **Position:** Environmental Practitioner
2. **Name/Surname:** Charl du Toit
3. **Date of Birth:** 29 October 1960
4. **Nationality:** Namibian
  
5. **Education:**

Name of Institution	University of Stellenbosch, South Africa
Degree/Qualification	Hons B (B + A) in Business Administration and Management
Date Obtained	1985-1987
Name of Institution	University of Stellenbosch, South Africa
Degree/Qualification	BSc Agric Hons (Chemistry, Agronomy and Soil Science)
Date Obtained	1979-1982
Name of Institution	Boland Agricultural High School, Paarl, South Africa
Degree/Qualification	Grade 12
Date Obtained	1974-1978
  
6. **Membership of Professional Association:** EAPAN Member (Membership Number: 112)
  
7. **Languages:**

	<u>Speaking</u>	<u>Reading</u>	<u>Writing</u>
English	Good	Good	Good
Afrikaans	Good	Good	Good
  
8. **Employment Record:**

<u>From</u>	<u>To</u>	<u>Employer</u>	<u>Position(s) held</u>
2009	Present	Green Earth Environmental Consultants	Environmental Practitioner
2005	2008	Elmarie Du Toit Town Planning Consultants	Manager
2003	2005	Pupkewitz Megabuild	General Manager
1995	2003	Agra Cooperative Limited Namibia	Manager Trade
1989	1995	Development Corporation	Chief Agricultural Consultant
1985	1988	Ministry of Agriculture	Agricultural Researcher

**Certification:**

I, the undersigned, certify that to the best of my knowledge and belief, this CV correctly describes myself, my qualifications, and my experience. I understand that any wilful misstatement described herein may lead to my disqualification or dismissal, if engaged.



---

**Charl du Toit**

## APPENDIX I: CURRICULUM VITAE OF CARIEN VAN DER WALT

1. **Position:** Environmental Consultant
2. **Name/Surname:** Carien van der Walt
3. **Date of Birth:** 6 August 1990
4. **Nationality:** Namibian

5. **Education:**

Institution	Degree/Diploma	Years
University of Stellenbosch	B.A. (Degree) Environment and Development	2009 to 2011
University of South Africa	B.A. (Honours) Environmental Management	2012 to 2013

6. **Membership of Professional Associations:**

EAPAN Member (Membership Number: 113)

7. **Languages:**

Language	Speaking	Reading	Writing
English	Good	Good	Good
Afrikaans	Good	Good	Good

8. **Employment Record:**

From	To	Employer	Positions Held
07/2013	Present	Green Earth Environmental Consultants	Environmental Consultant
06/2012	03/2013	Enviro Management Consultants Namibia	Environmental Consultant
12/2011	05/2012	Green Earth Environmental Consultants	Environmental Consultant

9. **Detailed Tasks Assigned:**

Conducting the Environmental Impact Assessment, Environmental Management Plan, Public Participation, Environmental Compliance and Environmental Control Officer

**Certification:**

I, the undersigned, certify that to the best of my knowledge and belief, this CV correctly describes myself, my qualifications, and my experience. I understand that any wilful misstatement described herein may lead to my disqualification or dismissal, if engage.

---

Carien van der Walt

## APPENDIX J: ENVIRONMENTAL MANAGEMENT PLAN