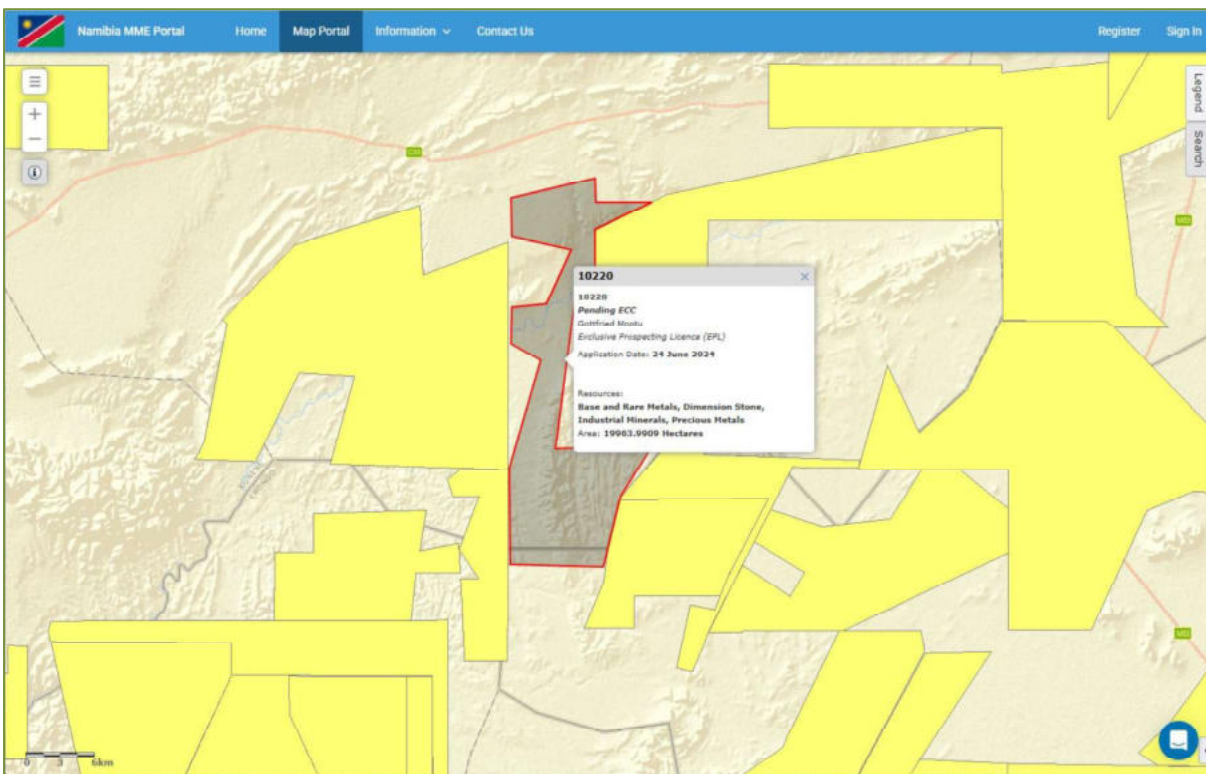




Consequently the EPL area is accessible by 2x4 / 4x4 pick-up vehicle by the existing tracks and otherwise, the sensitive section of the area will only be accessed by foot to ensure minimum impacts on the receiving environment

**Table 3: Prospecting License Centre coordinates of the proposed development site**

Commercial / Resettlement Farms	
Farm 1	Farm Volunteer No. 106
Farm 2	Farm Aasvoelkrans No. 100
Farm 3	Farm Okaua No. 99
Farm 4	Farm Eureka No. 98
Farm 5	Farm Harmonie No. 97
Farm 6	Farm Okay No. 87
Farm 7	Farm Nuremberg No. 88
Farm 8	Farm Madagascar No. 89
Farm 9	Farm Kabussemjama No. 90



**Figure 5: Evidence of the proposed prospecting license on the Ministry of Mine's cadastre (MME, 2025)**

## 2.3. SUPPORTING INFRASTRUCTURE AND SERVICES

### 2.3.1 Current Land Uses

The Khomas Region in Namibia has diverse land uses, including commercial farming, communal land, urban development, and some areas with limited farming or "rural slums". Windhoek, the capital, is a major hub for industry, commerce, and tourism.