

2.4. PROJECT LOCATION

The EPL 9690 is situated about 55 km North-west of Witvlei Settlement, in the Omaheke Region (**Figure 3**, locality map and **Table 3** corner coordinates). The dominant land-use in the area is predominantly consisting of commercial livestock farms (listed in **Table 4**) and a few that were partially converted into game-farm with the aim of accommodating tourism activities. The EPL is directly accessible via the B6 (Trans-Kalahari highway) and then the C29 district gravel road, while other section of the EPL will only be accessed by foot to ensure minimum impacts on the receiving environment. within the Otjozondjupa Region.

The dominant land-use in the area is predominantly consisting of commercial livestock farms and a few that were partially converted into game-farm with the aim of accommodating tourism activities. The EPL is mainly accessible via the D2102 District gravel road and other section of the EPL may only be accessed by existing farm tracks or by foot to ensure minimum impacts on the receiving environment.

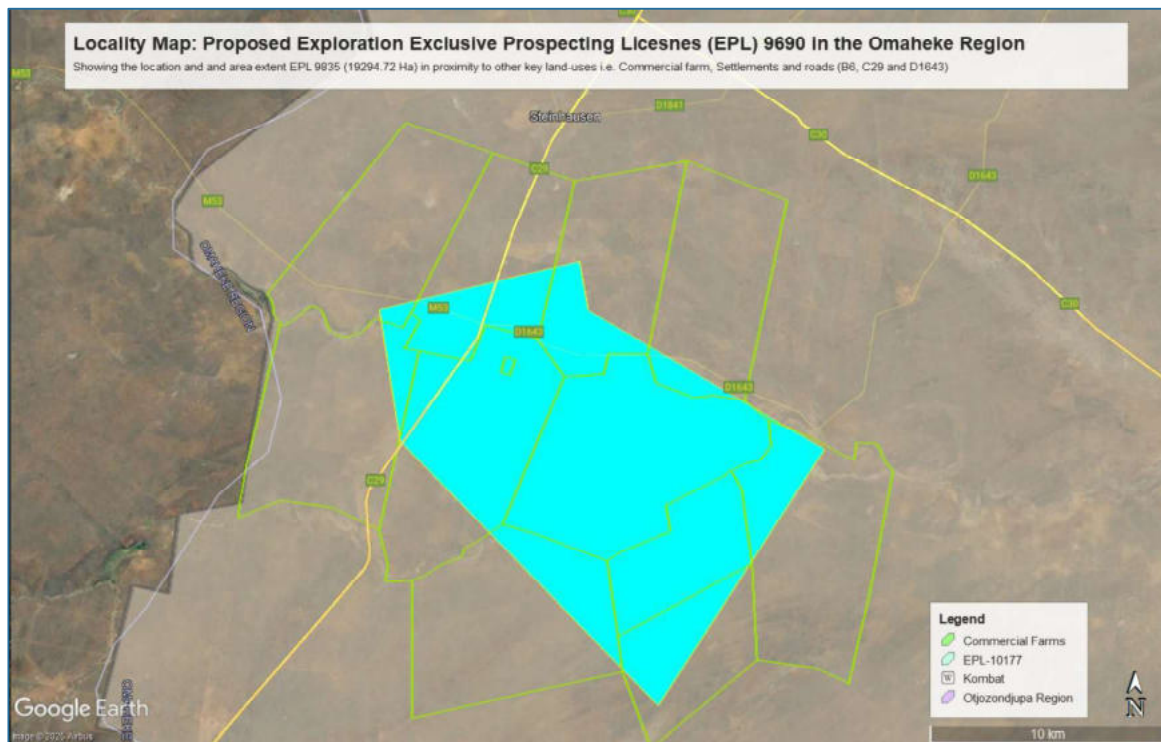


Figure 3: Locality map of the proposed Exclusive Prospecting License (EPL) 9690, Omaheke Region

Table 3: Corner coordinates of the proposed development site

Corner point	Latitude	Longitude
A – EPL 9690 Corner Point 1	-21.906227°	18.155872°
B – EPL 9690 Corner Point 2	-21.955691°	18.165695°
C – EPL 9690 Corner Point 3	-21.886732°	18.240177°
D – EPL 9690 Corner Point 4	-21.902452°	18.244892°
E – EPL 9690 Corner Point 5	-21.955314°	18.343685°
F – EPL 9690 Corner Point 6	-22.055712°	18.272673°

Table 4: Shows a list of commercial farm overlain by the proposed EPL 9690

Commercial / Resettlement Farms	
Farm 1	Farm Iowa No. 133
Farm 2	Farm Vendetta No. 202/Rem
Farm 3	Farm Karamba No. 203
Farm 4	Farm Kamingana No. 204
Farm 5	Farm Damara No. 201
Farm 6	Farm Riverside No. 200
Farm 7	Farm Joyce No. 198
Farm 8	Farm Spinosa No. 138
Farm 9	Farm Magoras No. 137/001
Farm 10	Farm Talana No. 66/Rem
Farm 11	Farm Idaho No. 137/Rem

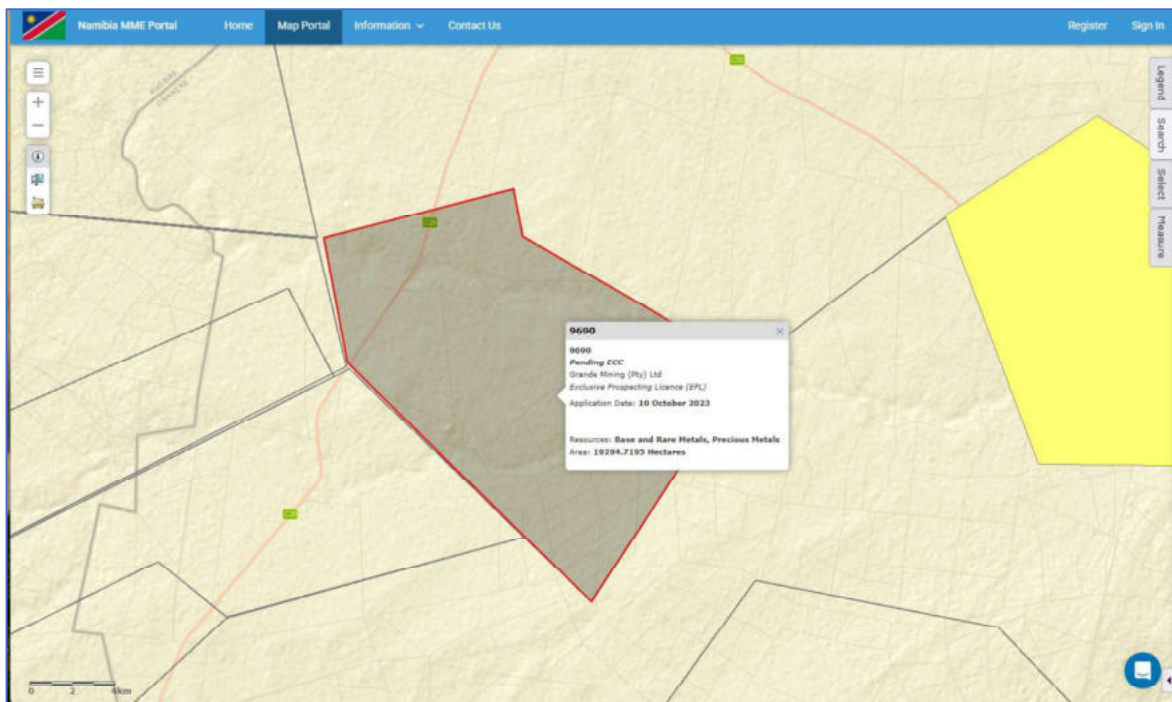


Figure 4: Evidence of the proposed Exclusive Prospecting License (EPL) application on the Ministry of Mine’s cadastre (MME, 2025)

2.4. SUPPORTING INFRASTRUCTURE

2.4.1 Basecamp

Given the location the Exclusive Prospecting License (EPL) in a communal area, a suitable site must be identified in collaboration with all relevant authorities including the Property / Farm Owners to decide on a basecamp location. Where practical and possible, it is strictly recommended that for unskilled labour, local community members are employed and thus accommodated at the base-camp preidentified in collaboration with the property owner and only for the duration during which the exploration programme is being implemented.