

Proposed subdivision land development of Portion 137 of Rundu Townlands No. 1329, Rundu Town, Kavango East Region-Namibia



Legend

- rivers
- - - Proposed_Transmission_line
- Existing_Transmission_Lines
- Portion_137_Rundu

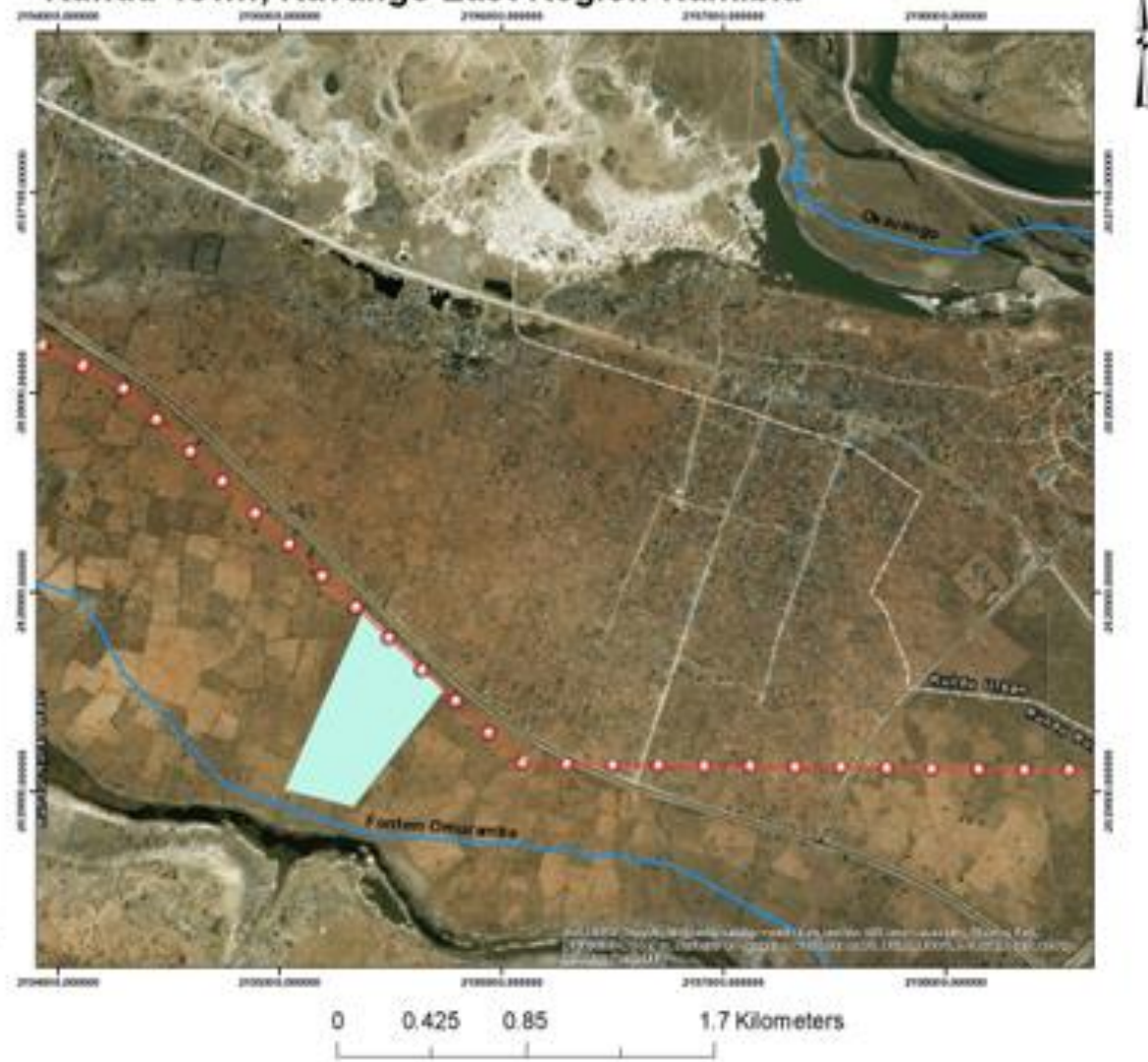


Figure 1: Location of the proposed Portion 137.

The portion 137 is situated approximately 6km from Rundu Town along the Rundu-Nkurenkure road opposite Sauyemwa Township. The exact coordinates of the location are:

A	Lat 17° 55' 35.56"	Long 19° 43' 17.34"
B	Lat 17° 56' 1.25"	Long 19° 43' 5.51"
C	Lat 17° 56' 3.57"	Long 19° 43' 15.82"
D	Lat 17° 55' 47.17"	Long 19° 43' 29.09"