

2025

ENVIRONMENTAL MANAGEMENT PLAN FOR THE OPERATION AND MAINTENANCE OF AN EXISTING GROOT AUB - GROOT AUB ELECTRICAL RETICULATION SYSTEM.



This document is prepared by:

Namibia Power Corporation (Proprietary) Limited

NamPower Center 15 Luther Street, Windhoek

P.O. Box 2864, Windhoek, Namibia

Tel: +264 (61) 205 4111

June 2025



Table of Contents

1	LIST OF TERMS, ACRONYMS AND ABBREVIATIONS	3
2	INTRODUCTION	4
a.	GENERAL AREA DESCRIPTION	5
3	OBJECTIVES AND SCOPE OF THIS ENVIRONMENTAL MANAGEMENT PLAN (EMP).....	8
4	POLICY AND LEGISLATIVE FRAMEWORK	9
5	ROLES AND RESPONSIBILITIES	14
6	DESCRIPTION OF OPERATIONAL ACTIVITIES TO BE UNDERTAKEN AND ASSOCIATED IMPACTS	16
7	MANAGEMENT AND MITIGATION MEASURES	18
8	REPORTING, MONITORING AND AUDITING	29
9	NON-COMPLIANCE AND CONFLICT MANAGEMENT PROCEDURES.....	30
10	RECORD KEEPING	30
11	CONCLUSION	31
12	REFERENCES.....	31
	Annexure 1: Areas of importance and protected species.....	32
	Annexure 2: Protection of Ecology & Vegetation.....	33
	Annexure 3: Landowner permission form	34
	Activities to be undertaken on the property (completed by the contractor):	34
	Specific conditions to be met on the property (as stipulated by the landowner):	35
	Annexure 4: Chance find procedure.....	36

1 LIST OF TERMS, ACRONYMS AND ABBREVIATIONS

APD	Anti-Perching Devices
BFD	Bird Flight Diverters
EAP	Environmental Assessment Practitioner
ECC	Environmental Clearance Certificate
EIA	Environmental Impact Assessment
EMA	Environmental Management Act no 7 of 2007
EMP	Environmental Management Plan
GIS	Geographical Information System
HIV/AIDS syndrome	Human immunodeficiency virus/ acquired immunodeficiency
MEFT	Ministry of Environment, Forest and Tourism
NHC	National Heritage Council
REDs	Regional Electricity Distributors
SAPP	Southern African Power Pool
SHE	Safety, Health and Environment
SHEW	Safety, Health, Environment and Wellness
kV	Kilovolt

2 INTRODUCTION

NamPower's core business is the generation, transmission and energy trading, which takes place within the Southern African Power Pool (SAPP), the largest multilateral energy platform on the African continent. NamPower supplies bulk electricity to Regional Electricity Distributors (REDs), Mines, Farms and Local Authorities (where REDs are not operational) throughout Namibia. To carry out its mandate of transmission and distribution of electricity, NamPower's has a transmission network across all regions countrywide as well as distribution networks in areas where there are no regional electricity distribution companies. The continuous operation of the transmission and distribution networks allow NamPower to provide uninterrupted supply of electricity to regions to improve the living conditions of Namibian citizens and to enable economic development.

The Groot Aub - Groot Aub electrical reticulation route runs eastwards from the Groot Aub Substation, with T-Offs servicing various farms/businesses and households in Groot Aub along the route in Khomas region. The Groot Aub - Groot Aub electrical reticulation system has a total length of 25.7 km and it has towers constructed with wooden pole structures. Figure 1 below shows the locality map for this electrical reticulation system.

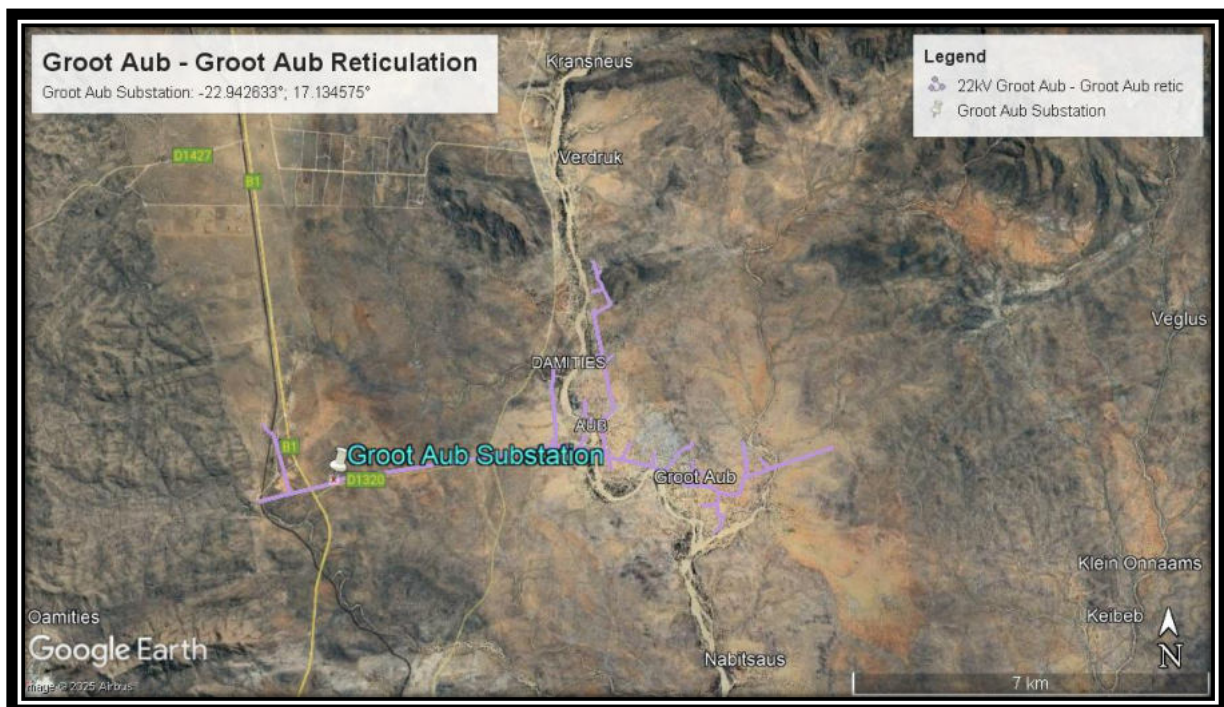


Figure 1: Locality map showing the Groot Aub – Groot Aub reticulation system

a. GENERAL AREA DESCRIPTION

The Groot Aub - Groot Aub line falls within the vegetation type known as the Camelthorn Savannah (Central Kalahari) or Central Kalahari, (Cunningham, 2022). Most of the route is sparsely vegetated and is serviced partially beneath the line and from the tarmac road between the Groot Aub Substation and Groot Aub with *Vachellia mellifera* trees/shrubs being dominant throughout, (Cunningham, 2022). The most important species encountered along the route are viewed as *Vachellia erioloba*, *Ziziphus mucronata*, *Aloe littoralis* and *Boscia albitrunca*, (Cunningham, 2022).

The general Groot Aub - Groot Aub line route is typically associated with certain anthropomorphic influences mainly associated with roads and tracks, freehold farm developments, urban developments and NamWater pipeline. The impact of line inspections and general maintenance activities would be site specific and have a relatively small environmental “footprint” and is not expected to have a major impact on the environment.

The route passes through one “hotspot” areas, one viewed as “high” sensitivity, while the rest of the route is viewed as “low” sensitivity, with ephemeral drainage line being the most important habitat, (Cunningham, 2022). Figure 2 – 9 show the sensitive areas and some of the protected plant species found along and in the vicinity of the line servitude.



Figure 2. *Acacia mellifera* (black thorn) is the dominant tree along this mostly sparsely vegetated route. Groot Aub can be viewed in the background.



Figure 3. At the end of the backbone on the north-eastern side of Groot Aub.



Figure 4. *Boscia albitrunca* (shepherd's tree) trees are common along this line (See arrows). The Groot Aub Substation is visible in the background.



Figure 5. A few large *Ziziphus mucronata* (buffalo thorn) occur along this route.

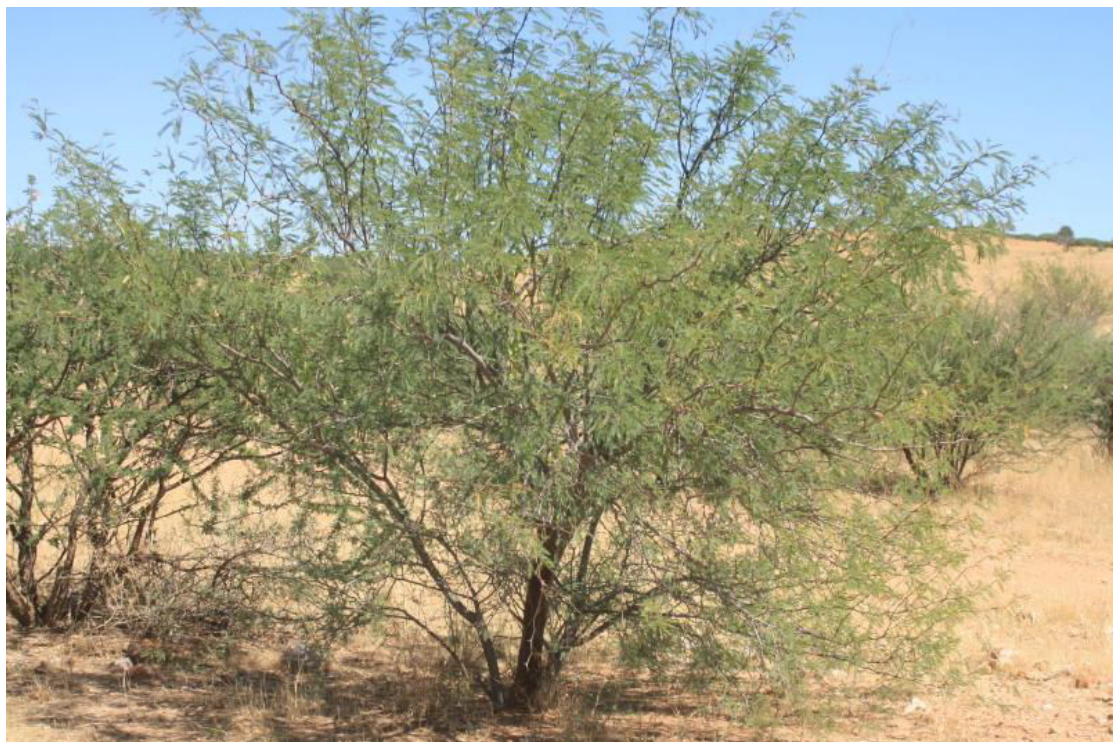


Figure 6. The invasive alien *Prosopis* spp. (mesquite species) occurs in the Groot Aub area.



Figure 7. The large ephemeral drainage line at the entrance to Groot Aub is viewed as “high” sensitivity regarded as high biodiversity areas and thus an important habitat.

3 OBJECTIVES AND SCOPE OF THIS ENVIRONMENTAL MANAGEMENT PLAN (EMP)

The operation of the powerline can have a negative impact on the receiving environment. However, the impacts are limited to the line servitude. It is thus important that good management measures are implemented to ensure that environmental damage is minimized. This Environmental Management Plan (EMP) seeks to manage and keep to a minimum the negative impacts associated with the powerline and at the same time enhances the positive and beneficial impacts.

The scope of this EMP includes all activities associated with the operation of the powerline. It is necessary to highlight that the EMP is a living document that should be periodically reviewed and updated. It should also be noted that the EMP should be read in conjunction with laws and regulations outlined in section 5, Table 1 and all other applicable laws.

The aim of this EMP is to detail the management actions required to implement the mitigation measures identified thereby ensuring that any operational phase activity is carried out in a manner that takes cognizance of environmental protection and is in line with National legislation.

This EMP has the following objectives:

- To outline mitigation measures to be implemented during the operation phase, to manage and minimize the extent of environmental impacts.
- Minimize negative impacts and enhance positive impacts associated with the operations.
- To ensure that the operational activities do not result in undue or reasonably avoidable adverse environmental impacts and ensure that any potential environmental benefits are enhanced.
- To identify key personnel who will be responsible for the implementation of the measures, outline functions and responsibilities.
- To propose mechanisms for monitoring compliance and preventing long term or permanent environmental degradation.
- To ensure that the concerns and complaints of Interested and Affected Parties (I&APs) with regards to the operational activities are addressed effectively and timely.
- Ensure compliance to legislative requirements.

4 POLICY AND LEGISLATIVE FRAMEWORK

The key legislative requirements which are applicable to the operational and maintenance activities include but not limited to the ones listed on table 1 below. The outlined legislations must be read in full for clear understanding in addition to the summary provided in the table.

Table 1 The legislative requirements which are applicable to the operational and maintenance activities

Legislation:	Section (s) applicable:	Implications:
Environmental Management Act no 7 of 2007	Section 3	<ul style="list-style-type: none">• All activities performed should be in line with the following principles:<ul style="list-style-type: none">○ Interested and affected parties should have an opportunity to

	<p>Section 27</p> <p>Section 33 onwards</p> <p>And all other applicable sections.</p>	<p>participate in decision making</p> <ul style="list-style-type: none"> ○ Listed activities should be subject to an EIA ○ Polluter should pay for rehabilitation ○ Pollution should be minimized <ul style="list-style-type: none"> • Environmental assessments should be carried out for listed activities. The proposed activity can be classified under the following range of activities: <ul style="list-style-type: none"> ○ Generation of electricity ○ Transmission of electricity • These sections detail the process to be followed to obtain a clearance certificate. • All existing listed activities must obtain a clearance certificate within one year of the law coming into effect. Therefore, all existing activities which can be considered a listed activity should apply for clearance.
EMA Regulations GN 28-30 (GG 4878) (February 2012)	<ul style="list-style-type: none"> • Listed activity: • 5.1 • 6 – 9; 13; 15; 21 -24 • Any other applicable sections 	<ul style="list-style-type: none"> • This activity can be considered as electricity generation and transmission. • These sections detail the process to be followed in terms of producing an Environmental Assessment and this process should be adhered to during the generation of information for this document.
No. 156 Labour Act, 1992: Regulations relating to the health and safety of employees at work.	All applicable regulations	All regulations applicable to different activities must be complied with.

Labour Act no 11 of 2007	<ul style="list-style-type: none"> • Section 3 • Section 4 • Section 9 • Section 39 – 42 • All other applicable sections 	<ul style="list-style-type: none"> • Children under the age of 16 may not be employed • Forced labour may not be used. • Basic conditions of employment as stipulated by the law must be met. • The employer shall ensure the health and safety of all employees and non-employees on site. Employees must fulfil their duties to ensure their own health and safety and that of other employees and people. Employees may leave the workplace if reasonable measures to protect their health are not taken.
Electricity Act no 4 of 2007	<ul style="list-style-type: none"> • Section 33 	<ul style="list-style-type: none"> • Installations used for the provision of electricity should be operated with due compliance with the requirements of laws relating to health, safety and environmental standards. Therefore – any company involved within the Electricity Supply Industry must adhere to the laws covering the previously stated aspects or stand to lose their licenses to operate.
Public and Environmental Health Act no 1 of 2015	<ul style="list-style-type: none"> • Section 52 • Section 53 • All other sections applicable to different activities. 	<ul style="list-style-type: none"> • A person generating waste must ensure that the waste generated is kept and stored under conditions that causes no harm to human health or damage to the environment. • Waste must only be disposed of at a waste disposal site, including an incinerator approved by the local authority concerned.
Water Resources Management Act no 24 of 2013	<ul style="list-style-type: none"> • Section 89 • All other sections applicable to 	<ul style="list-style-type: none"> • The owner or occupier or other person in control of land where an incident that causes or is likely to cause a water resource to be polluted must take all reasonable measures to

	different activities.	contain and minimize the effects of the incident; and to clean up polluted areas and remedy the effects of the incident.
Hazardous Substances Ordinance 14 of 1974	<ul style="list-style-type: none"> • Section 27 • All other sections applicable to different activities. 	<ul style="list-style-type: none"> • To provide for the control of substances which may cause injury or ill-health to or death of human beings, by reason of their toxic, corrosive, irritant, strongly sensitizing or flammable nature or the generation of pressure thereby in certain circumstances; • To provide for the division of such substances into groups in relation to the degree of danger. • To provide for the prohibition and control of importation, manufacture, sale, use, operation, application, modification, disposal or dumping of such substances; and • To provide for matters connected therewith.
Fertilizers, farm feeds, agricultural remedies and stock remedies Act no 36 of 1947	<ul style="list-style-type: none"> • Definitions • Section 7 • Section 10 • All other sections applicable to different activities. 	<ul style="list-style-type: none"> • Arborocides application is defined as an agricultural remedy under this Act • Only registered pesticides may be used. • May only buy herbicides in a container that complies with the prescribed requirements and is sealed and labelled. • Only allowed to use herbicides in the prescribed manner. • Landowners must be notified about applications, and the following information must be supplied: <ul style="list-style-type: none"> ○ Purpose of administration ○ Registered name and number of the product

		<ul style="list-style-type: none"> • Precautions to be taken before, during and after each administration.
The Nature Conservation Ordinance (1975) as amended through the Nature Conservation Amendment Act of 1996.	<ul style="list-style-type: none"> • Chapter 11: Game Parks, Nature Reserves, Conservancies and Wildlife Councils 	<ul style="list-style-type: none"> • Permits are required to enter the National Park. Permits are also required for the removal of any protected plant or tree. It also stipulates that no damage may be done to any object of geological, ethnological, archaeological, historical or other scientific interest without the appropriate permits.
National Heritage Act No 27 of 2004	<ul style="list-style-type: none"> • Section: 46, 48, 55 • All other sections applicable to different activities. 	<ul style="list-style-type: none"> • All heritage resources are to be identified and either protected or removed/mitigated with a permit from the National Monuments Council, before any development may take place • A chance find procedure should be followed in case of discovery of a heritage resource.
Soil Conservation Act no 76 of 1969	<ul style="list-style-type: none"> • Section 4 • Section 13 • Section 21 • And other applicable sections 	<ul style="list-style-type: none"> • Institutions may be ordered by the relevant Minister to construct soil conservation works when and where necessary. • Fire protection schemes may be implemented to regulate the prohibition of veld burning as well as the prevention, control and extinguishing of veld and forest fires. • It is illegal to damage, destroy / fail to maintain any soil conservation works; fire belts; works constructed in terms of a fire protection scheme.
Forest Act no 12 of 2001	<ul style="list-style-type: none"> • Section 66 • Section 41 • And other applicable sections 	<ul style="list-style-type: none"> • Vegetation may not be removed within 100 m of a river, stream or water course • A person shall be liable for damage caused by any fire which arises because of activities

		carried out on site without having taken reasonable measures to prevent a fire.
--	--	---

5 ROLES AND RESPONSIBILITIES

It is the responsibility of NamPower and/or contractor to ensure that all the environmental management actions are carried out effectively and timeously. It is important to note that the successful implementation of the EMP is, however, dependent on clearly defined roles and responsibilities by several stakeholders. Below are the key employees that are responsible for the management of environmental and social issues during the operational phase:

Table 2: The roles and responsibilities for operational and maintenance activities:

Responsible person	Responsibilities
The Area Superintendent	<ul style="list-style-type: none"> • Is responsible for the enforcement of the EMP • To ensure that environmental requirements are adequately covered in any external service provider contracts. • To ensure that SHE requirements are included in the tender documents sent to the contractors. A copy of this EMP should also form part of the tender documents. • To ensure that corrective actions are implemented for non-compliances. • To ensure that appropriate records and information regarding compliance with environmental requirements are maintained. • To ensure that the line remain in compliance with the requirements of this EMP, through regular communication and monitoring. • To ensure that all incidents, accidents and complaints are

	<p>reported. To also ensure that incidents and accidents are investigated to prevent re-occurrence.</p>
Project Manager	<ul style="list-style-type: none"> • Is responsible for the enforcement of the EMP. • To ensure that SHE requirements are included in the tender documents sent to the contractors. • Must ensure that the contractor/NamPower Team remain in compliance with the requirements of this EMP throughout the project.
NamPower SHEW	<ul style="list-style-type: none"> • To ensure that all requirements with regards to this EMP are fulfilled. • Communicate NamPower SHEW requirement to the contractors and NamPower employees. • Provides SHEW inductions to NamPower and contractor employees. • Implement monitoring, conduct inspections and audits in consultation with the Project Manager/Area Superintendent. • Document and communicate monitoring, audit and inspection findings to project manager and area superintendent. • Communicate the final inspection report to the Project manager on project team compliance to the EMP before the project close-off and final payment is made to the contractor.
Contractor	<ul style="list-style-type: none"> • Is responsible for the implementation of the EMP • To appoint an environmental officer responsible for the implementation of this EMP. • To ensure that all tasks undertaken under the scope of work, are in accordance both with NamPower's SHEW policies and procedures as well as to the requirements of this EMP.

	<ul style="list-style-type: none"> • Ensure that employees are regularly trained and awareness built relating to environmental and social management. • To ensure that all incidents, accidents and complaints are reported to the project manager. The contractor to ensure that incidents and accidents are investigated to prevent re-occurrence. • Ensuring that all employees receive a SHEW induction before the start of the project. • Ensuring that the work being done does not create a nuisance to any being working, residing or living on adjacent properties or within the immediate surroundings of the site.
--	---

6 DESCRIPTION OF OPERATIONAL ACTIVITIES TO BE UNDERTAKEN AND ASSOCIATED IMPACTS

The activities associated with operational, and maintenance (the socio-economic and environmental impacts) include but not limited to the ones listed in table 3 below.

Table 3: Description of the activities related to the operational activities.

Activity	Description	Associated potential impacts
General functioning and presence of the powerline.	<ul style="list-style-type: none"> • Physical presence and functional characteristics of the powerline. 	<ul style="list-style-type: none"> • Animal (including birds) mortalities through collisions and electrocution. • Visual impact. • Community impacts in a form fatalities or injuries caused by electrocution. • Meeting electricity demand (positive impact).
Maintenance of the	<ul style="list-style-type: none"> • The maintenance of the 	<ul style="list-style-type: none"> • Soil and water contamination

line	<p>line entails but not limited to:</p> <ul style="list-style-type: none"> • General line components repairs/replacements. • Construction or repairing of access roads. • Repair or replacement of towers or tower components and others. • Upgrades 	<ul style="list-style-type: none"> • Waste generation leading to filling up of landfill space • Loss of biodiversity • Loss of sensitive habitats, flora and fauna. • Social issues related to the introduction of new workers in the area, e.g. HIV/AIDS spreading • Loss of human life (through electrocution)
Periodic inspections and monitoring	<ul style="list-style-type: none"> • Inspecting the line and substation conditions and assess compliance to procedures and legal requirements. 	<ul style="list-style-type: none"> • Soil and ground water contamination as a result of oil spills • Soil contamination as a result of improper waste handling and disposal. • Loss of biodiversity if existing access roads are not used.
Installation of Optic Fiber networks	<ul style="list-style-type: none"> • Design, Supply, Delivery, Installation and Commissioning of Optic Fiber networks for communication purposes. 	<ul style="list-style-type: none"> • Loss of biodiversity • Soil contamination because of improper waste handling and disposal. • Loss of sensitive plants and habitats.
Vegetation Management	<ul style="list-style-type: none"> • Removal of trees and bushes to maintain access to the line servitude. 	<ul style="list-style-type: none"> • Loss of biodiversity • Conflict with stakeholders • Loss of topsoil

		<ul style="list-style-type: none"> • Soil and water contamination • Loss or damage to heritage and cultural resources.
--	--	--

7 MANAGEMENT AND MITIGATION MEASURES

To ensure that the potential impacts are eliminated and/or minimised, it is necessary to ensure that the various activities related to the operation and maintenance of the power lines are adequately managed and monitored. Table 4 below outline mitigation measures as well as objectives to be achieved. A responsible person (s) has been assigned to each mitigation measure (s).

Table 4: Proposed mitigation measures for the general operational activities

ASPECT	MANAGEMENT AND MITIGATION MEASURES/COMMITMENTS	RESPONSIBLE PERSON
Safety Health and Environmental (SHE) Awareness	<ul style="list-style-type: none"> • All employees should undergo SHE induction before work commences onsite. • All employees are to be made aware of their individual roles and responsibilities in achieving compliance with the EMP. • SHE toolbox talks to be conducted and records to kept onsite. 	<ul style="list-style-type: none"> • Area superintendent • Project manager • SHEW • Contractor
Safety Management	<ul style="list-style-type: none"> • A SHE file must be submitted and reviewed by the SHEW section in case of projects in accordance with NamPower SHE requirements. • NamPower Procedures, policies and legal requirements pertaining to safety must be complied with. 	<ul style="list-style-type: none"> • Area superintendent • Project manager • Contractor • SHEW
Fire Management	<ul style="list-style-type: none"> • Eliminate the presence of potential sources of ignition and provide appropriate equipment to minimize fire risk. • Fire extinguishers to be readily available onsite and in vehicle. • Regular servicing of fire extinguishers. 	<ul style="list-style-type: none"> • Area superintendent • Project manager • Contractor

ASPECT	MANAGEMENT AND MITIGATION MEASURES/COMMITMENTS	RESPONSIBLE PERSON
	<ul style="list-style-type: none"> • Firefighting training to be provided to employees. • Maintain fire breaks. 	
Air Quality	<ul style="list-style-type: none"> • Dust generation from all activities must be minimised. • Excavation, handling and transportation of erodible materials shall be avoided under high wind conditions or when a visible dust plume is present. • Speed limit to be enforced to control dust emissions. • Dust suppression measures shall be implemented when necessary. • Vehicle, machinery and equipment shall be maintained in good working order to minimise exhaust fume emissions. • Vehicle, machinery and equipment must be serviced by competent personnel and records must be filed. 	<ul style="list-style-type: none"> • Area superintendent • Project manager • Contractor
Resources Efficiency	<ul style="list-style-type: none"> • Minimise water wastage and record water usage. • Avoid wasteful use of materials. • Source goods and services locally where possible 	<ul style="list-style-type: none"> • Area superintendent • Project manager • Contractor

ASPECT	MANAGEMENT AND MITIGATION MEASURES/COMMITMENTS	RESPONSIBLE PERSON
Waste Management	<ul style="list-style-type: none"> • Minimise the generation of waste by applying the waste hierarchy. • Line servitude to be kept free of waste. • No burning, burying or dumping of any waste materials shall be permitted onsite. • Labelled waste bins with lids must be provided at campsites (in case of a project) for all waste streams and ensure that waste is disposed at nearest approved waste disposal site. • Ensure that waste segregation is done at source. • Hazardous waste shall be disposed of at a registered hazardous waste disposal site. • Safe disposal certificates for hazardous waste must be kept in the SHE file. • Concrete waste must not be dumped on site. 	<ul style="list-style-type: none"> • Area superintendent • Project manager • Contractor
Wastewater management	<ul style="list-style-type: none"> • Water containing environmental pollutants shall be collected and removed from site. • No wastewater runoff or uncontrolled discharges from the site/working areas 	<ul style="list-style-type: none"> • Project manager • Contractor • Area superintendent

ASPECT	MANAGEMENT AND MITIGATION MEASURES/COMMITMENTS	RESPONSIBLE PERSON
	<p>shall be permitted.</p> <ul style="list-style-type: none"> • Mobile toilets or septic tanks should be used in remote areas. 	
Hazardous Substances	<ul style="list-style-type: none"> • The use, handling, storage and disposal of the hazardous chemical must be in accordance with the MSDS. • Containers must be clearly marked to indicate contents and quantities. • Hazardous substances storage areas must be bunded. A bund should be able to contain 110% of the volume of the largest container stored within it. • Diesel and other liquid fuel, oil and hydraulic fluid must be stored in appropriate storage tanks or in bowzers with secondary containment. • Inspect and maintain hazardous storage areas and bund walls to avoid overflows. • Ensure that drip trays are available, to be use in case of leaking equipment. • Spill kit and absorbents must be available to clean – up a spill. • Hazardous substance storage areas must display safety symbolic signs. • All spills must be reported, cleaned and remediated to in compliance with SHEW requirements. 	<ul style="list-style-type: none"> • Area superintendent • Project manager • Contractor

ASPECT	MANAGEMENT AND MITIGATION MEASURES/COMMITMENTS	RESPONSIBLE PERSON
Social Impact	<ul style="list-style-type: none"> NamPower/ Contractor must sign land permission form and agreement with landowners 14 days prior to commencement of work onsite. Employees should be properly educated about the impact of HIV / AIDS and pregnancies. The use of intoxicating liquor or drugs of any kind by the employees is strictly prohibited. Ensure that all queries and complaints are documented, investigated and dealt with. A register shall be kept of all complaints from stakeholders, this should also the actions taken to rectify the complaints. 	<ul style="list-style-type: none"> Area Superintendent Project Manager All NamPower employees Contractor
Archaeology	<ul style="list-style-type: none"> Should a heritage site or archaeological site be uncovered or discovered during the operation phase, a “change find” procedure in appendix 4 should be applied. Any chance finds must be reported to NamPower environmental section. In an event of discovery of human remains or other artefacts the work shall cease. A professional archaeologist is to be consulted and carry out investigation. 	<ul style="list-style-type: none"> Area superintendent Project Manager SHEW Contractor

ASPECT	MANAGEMENT AND MITIGATION MEASURES/COMMITMENTS	RESPONSIBLE PERSON
Fauna and Flora	<ul style="list-style-type: none"> • Ensure that the site is kept clean and free of rubbish that could potentially attract animals and pests • No harvesting or damaging of plants is allowed. • Poaching or capturing of any animal (wild or domestic) is prohibited. • Bird nests may not be disturbed unless interfering with the normal operation of the line. • Vehicles driving along the lines should engage four-wheel drive to prevent spinning and consequent impacts on soil surface. • Do not destroy, damage, collect any protected flora species that may be encountered unless interfering with the normal operation of the line. • Minimize disturbances in sensitive areas. • Only remove/prune flora directly affecting the powerline. • Identify potential bird collision prone areas (i.e. habitats). • Bird flight diverters (BFD's) must be installed in collision prone areas with recorded high bird mortalities. 	<ul style="list-style-type: none"> • Area superintendent • Project Manager • Contractor

ASPECT	MANAGEMENT AND MITIGATION MEASURES/COMMITMENTS	RESPONSIBLE PERSON
	<ul style="list-style-type: none"> • Monitor all bird mortalities encountered under the powerline. • All wildlife and electrical infrastructure interactions such as (animal/bird deaths) must be reported to the SHEW section. 	
Water Resources	<ul style="list-style-type: none"> • Care must be taken to ensure that pollution of water does not occur. • Naturally occurring water resources may not be used for any personal hygiene. • Water may only be taken from a private or government property based on an agreement between the NamPower, contractor and custodian of the water source. 	<ul style="list-style-type: none"> • Area superintendent • Project Manager • Contractor
Erosion	<ul style="list-style-type: none"> • Implement and maintain erosion control measures where required along the access route. • Rehabilitate eroded areas 	<ul style="list-style-type: none"> • Area superintendent • Project Manager • Contractor
Campsite Establishment	<ul style="list-style-type: none"> • Adequate ablution facilities must be provided onsite in relation to the number of employees in compliance with the applicable legislations. • Septic tanks/ or similar polluted water containment methods must be used in remote are 	<ul style="list-style-type: none"> • Area superintendent • Project Manager • Contractor

ASPECT	MANAGEMENT AND MITIGATION MEASURES/COMMITMENTS	RESPONSIBLE PERSON
	<ul style="list-style-type: none"> • Ablution facilities must not be located within 100m of any river, stream channel, pan, dam or borehole • Fire extinguishers, first aid kits, assembly point, and emergency numbers must be available onsite. • Waste must be managed in accordance with waste management requirements outlined in this EMP. 	
Manual and Mechanical Vegetation Removal	<p>These line servitudes do not necessarily require bush clearing but should the need arise, the following requirements must be complied to:</p> <ul style="list-style-type: none"> • Obtain a permit from the Ministry of Environment, Forestry and Tourism to remove protected trees as per the Forest Act No. 12 of 2001. • Measures must be put in place to avoid erosion especially at rivers, stream channel crossings, and at places where existing erosion scars and dongas are encountered to avoid any further erosion. • No mechanical bush clearing is allowed within these line servitudes. • Measures must be put in place to preserve the topsoil structure • The disturbed soil must be levelled. • Do not remove wood cut on site as this would affect the recycling of nutrients locally as well as lead to a potential industry in firewood targeting the better quality tree species. 	<ul style="list-style-type: none"> • Area superintendent • Project Manager • SHEW • Contractor

ASPECT	MANAGEMENT AND MITIGATION MEASURES/COMMITMENTS	RESPONSIBLE PERSON
	<ul style="list-style-type: none"> Where clearing is done near a river, the contractor/NamPower must ensure that no felled bushes/branches/shrubs are left behind in the riverbed. No burning of bush cleared materials is allowed onsite. Manual and mechanical vegetation removal should be done in accordance with NamPower Procedures. Avoid the cutting down of protected tree species [Forestry Ordinance No. 37 of 1952) not directly affecting the power lines during the line clearing operation. 	
Site Rehabilitation (progressive and post rehabilitation)	<ul style="list-style-type: none"> Progressive rehabilitation when project work is in progress. Post project rehabilitation must also be done. All materials, equipment and waste must be removed from site. An audit prior to the contractor leaving site must be conducted. Non – conformance to be rectified before the contractor/project team leave the site. 	<ul style="list-style-type: none"> Area superintendent Project Manager SHEW Contractor
	<ul style="list-style-type: none"> All possible emergencies must be identified Emergency preparedness and response plans for the identified emergencies must be prepared and communicated to all relevant stakeholders. 	<ul style="list-style-type: none"> Area superintendent All district personnel

ASPECT	MANAGEMENT AND MITIGATION MEASURES/COMMITMENTS	RESPONSIBLE PERSON
	<ul style="list-style-type: none"> District personnel or any other person conducting work on the lines must have emergency numbers such as for fire brigades, ambulance services, hospitals, police, snake and bee catchers. 	<ul style="list-style-type: none"> Project Manager Contractor

8 REPORTING, MONITORING AND AUDITING

The environmental monitoring, inspections and audits must be conducted in line with supporting procedures and requirements of this plan. Monitoring and inspection\audit reports detailing the monitoring and audit results shall be prepared by the SHEW section and communicated to the Area Manager or Superintendent or Project Manager. Records of monitoring and inspection\auditing report shall be kept and will be made available during inspections and audits.

The following general monitoring indicators and guideline are recommended should herbicides be used to do vegetation management along the line:

Table 5: General monitoring indicators and guideline recommended after herbicide application

Monitor trees adjacent the cleared area after herbicide application	A survey in year 1 (i.e. 6 months after application of herbicide) should be conducted along the affected route to determine the effect of the herbicide on non-target areas i.e. adjacent vegetation. Focus on protected tree species along the route
Monitor coppicing and regrowth after herbicide application	<p>A survey in year 2 (i.e. 1 year after application of herbicide) should be conducted along the affected route to determine the effect of the herbicide on bush clearing.</p> <p>This would indicate the success of the herbicide used as well as indicate the necessity of follow-up treatment.</p>
Sample any open surface water after herbicide application	<p>Very few open water sources are located along the route and although it is recommended that herbicides not be used in “high” and “medium” sensitivity areas, monitoring this would be viewed as a good practice.</p> <p>Take water samples from any surface water encountered and have these analysed to determine if herbicide used has entered these sources.</p>

9 NON-COMPLIANCE AND CONFLICT MANAGEMENT PROCEDURES

The Area Superintendent and Contractor shall ensure that the employees and external service providers comply with the requirements outlined in this EMP. In the event of non-compliance, the following recommended process shall be followed:

- Non – compliances will be identified during inspections or audits carried out by the SHEW Section and reported to the Area manager, Superintendent or Project Manager for corrective actions.
- Area Superintendent / Project Manager shall notify the responsible stakeholders about the non-compliance.
- Corrective and preventative actions must be implemented on an agreed timeframe.
- Follow – up inspections/audits shall be conducted to assess whether the corrective and preventative actions were implemented effectively.

The contractor shall notify NamPower of the following:

- Conflicts arising with any landowner / representative.
- Any special conditions requested by a landowner / representative.

NamPower has the right to stop all contractor's activities if it is found that a gross violation of the EMP is taking place.

10 RECORD KEEPING

Record keeping is important for the effective functioning and implementation of an EMP. EMP documentation must be kept in both the hard copy and electronic format for safe keeping. These must include but not limited to:

- Copy of the Environmental Clearance Certificate
- A copy of an EMP
- EMP implementation activities
- Induction records
- Audit and Inspection reports

- Other related documents

In case chemical vegetation management is conducted, the following records should be kept:

- Date of application
- Herbicide applied
- Persons responsible for application
- Supervisor
- Type of herbicide used
- Method of application
- Time of application
- Equipment used
- Concentration of herbicide used

11 CONCLUSION

All management measures and legal requirements outlined in this EMP should be implemented to ensure environmental compliance by all parties undertaking the operational activities. This will ensure that potential negative impacts are identified, avoided or mitigated and positive impacts are enhanced. It is unlikely that the operation and maintenance of the reticulation system will have significant environmental and social repercussions, and it is therefore recommended that the ECC is issued.

12 REFERENCES

Cunningham, P. (2022). VEGETATION ASSESSMENTS WITHIN SERVITUDES OF LOW VOLTAGE LINES [Rapid Vegetation Assessment] – GROOT AUB - GROOT AUB.

Annexure 1: Areas of importance and protected species

Table 6. Areas of importance, with protected species potentially affected, along the Groot Aub - Groot Aub reticulation system.

Hotspot areas	Distance (km)	Area	Important species	Common names	Status	Aliens	Other important features	Importance ranking
1	0 to 5.4	Groot Aub SS	<i>Vachellia erioloba</i> <i>Boscia albitrunca</i> <i>Ziziphus mucronata</i>	Camel thorn Shepherd's tree Buffalo thorn	F, LC F, LC F, LC	<i>Argemone ochroleuca</i> <i>Nicotiana glauca</i> <i>Prosopis</i> spp.	Drainage line	Low
	5.4 to 5.6	Groot Aub	<i>Vachellia erioloba</i>	Camel thorn	F, LC			High
	5.6 to 9.7	Groot Aub	<i>Vachellia erioloba</i>	Camel thorn	F, LC			Low

Distance: Might not be precise as it was measured using car odometer

Importance ranking: High & Low

Status: F: Forest Act No. 12 of 2001

LC: Least Concern (IUCN 2022)

Annexure 2: Protection of Ecology & Vegetation

Activity: Protection of Ecology & Vegetation	Compliance	
	Yes	No
Track discipline		
Evidence of new tracks		
Evidence of off-road driving		
Evidence of turnaround violations		
Evidence of oil spills		
Evidence of waste		
Evidence of litter		
Illegal collection/damage of flora		
Evidence of illegal plant collection		
Evidence of vehicle damage to plants		
Evidence of unauthorised people/vehicles		
Erosion		
Evidence of erosion along route		
Evidence of recovery at rehabilitated sites		
Invasive alien plants		
Evidence of invasive alien plants along route		
Bird mortalities		
Record all dead birds encountered below the line		

Annexure 3: Landowner permission form



Landowner Permission Form



Landowner name:	Contact number:
<hr/>	
Representative name:	
<hr/>	
Farm name:	
<hr/>	
Contractor:	
<hr/>	
Representative name:	Contact number:
<hr/>	

General Notice

This form is to be used prior to a contractor entering a landowner's property to commence any work related to the construction or maintenance of power-line structures and servitudes.

The form must be completed by either the landowner or his / her legal representative on the property.

Section A: Before activities commence

Activities to be undertaken on the property (completed by the contractor):

Use of water resources
Powerline erection
Powerline refurbishment
Trimming of vegetation
Use of other infrastructure
(please specify)

Camping Bush clearing
Herbicide application
Access Road usage
Rehabilitation

Specific conditions to be met on the property (as stipulated by the landowner):

Dates when access is needed:

From: _____

To: _____

Signatures (prior to entry)

Landowner/Representative

Contractor representative

Date

Date

Section B: Upon completion of work and prior to leaving the property

Remarks on compliance or misconduct (upon completion of activities):

Issues still to be resolved upon completion of activities:

Signatures (upon completion)

Landowner/Representative

Contractor representative

Date

Date

Annexure 4: Chance find procedure

Definition: The “chance finds” procedure covers the actions to be taken from the discovery of a heritage site or item to its investigation and assessment by a trained archaeologist or other appropriately qualified person.

Compliance: The “chance finds” procedure is intended to ensure compliance with relevant provisions of the National Heritage Act (27 of 2004), especially Section 55 (4): “a person who discovers any archaeological object must as soon as practicable report the discovery to the Council”. The procedure of reporting set out below must be observed so that heritage remains reported to the NHC are correctly identified in the field.

Procedure:

Action by person identifying archaeological or heritage material

- a) If operating machinery or equipment stop work
- b) Identify the site with flag tape
- c) Determine GPS position if possible
- d) Report findings to foreman

Action by foreman

- a) Report findings, site location and actions taken to superintendent
- b) Cease any works in immediate vicinity

Action by superintendent

- a) Visit site and determine whether work can proceed without damage to findings
- b) Determine and mark exclusion boundary
- c) Site location and details to be added to project GIS for field confirmation by archaeologist

Action by archaeologist

- a) Inspect site and confirm addition to project GIS
- b) Advise NHC and request written permission to remove findings from work area
- c) Recovery, packaging and labelling of findings for transfer to National Museum

In the event of discovering human remains

- a) Actions as above
- b) Field inspection by archaeologist to confirm that remains are human
- c) Advise and liaise with NHC and Police
- d) Recovery of remains and removal to National Museum or National Forensic Laboratory, as directed.