

Date: 18 July 2025

Otavi Town Council

P O Box 59, Otavi

Namibia

**TO WHOM IT MAY CONCERN**

Dear Sir/Madam,

**RE: STAKEHOLDER NOTIFICATION FOR PROPOSED EXPLORATION ACTIVITIES OF DIMENSION STONES, BASE & RARE METALS, INDUSTRIAL MINERALS AND PRECIOUS METALS GROUPS WITHIN THE EXCLUSIVE PROSPECTING LICENSE (EPL) NO. 9996, LOCATED NORTHEAST OF OTAVI, OTJOZONDJUPA REGION.**

Excel Dynamic Solutions (Pty) Ltd (EDS) hereby gives notice on behalf of Codebreak Investments (Pty) Ltd (the Proponent) about the Environmental Impact Assessment (EIA) process for the proposed mineral exploration on Exclusive Prospecting License EPL No. 9996. The EPL is located approximately 13 km northeast of Otavi in the Otjozondjupa Region, and it covers approximately 806.689 (ha). The EPL covers (overlies) Farms such as Rentes No. 783 and Malfoi No. 784 (**Figure 2**). The targeted commodities for the proposed exploration activities are Dimension Stones, Base & Rare Metals, Industrial Minerals, and Precious Metals.

The proposed exploration activities are listed in the Environmental Management Act No. 7 of 2007 and the EIA Regulations 30 of 2012 and cannot be undertaken without an Environmental Clearance Certificate (ECC). As such, an Environmental Scoping and Assessment (ESA) and Environmental Management Plan (EMP) Reports will be submitted to the Ministry of Industry, Mines and Energy (MIME) and the Ministry of Environment, Forestry and Tourism (MEFT) to support the application for decision-making.

The Otavi Town Council has been identified as an Interested and Affected Party (I&AP) and would have the right to participate in the public consultation process and provide input on potential impacts of the proposed exploration activities.

Codebreak Investments (Pty) Ltd intends to conduct exploration activities that entail the following:

- a) Lithology geochemical surveys which include soil and rock sampling shall be collected for trace element analysis to determine the presence of the targeted commodities.
- b) Electromagnetic and geophysical surveys shall be conducted should there be a need, following the designed exploration program.
- c) Detailed exploration drilling shall be conducted if the findings from the desktop study, lithology geochemical, electromagnetic and geophysical surveys are positive. These will entail drilling holes and sample collection for further analysis to determine the depth and spatial extent of the potential mineralization by using both Reverse Circulation (RC) and diamond drilling to about a 200 m depth.

If you have any comments, concerns, or inputs related to the proposed project, **please share them with us at the address below by the 4<sup>th</sup> of August 2025.**

Tel: +264 (0) 61 259 530

Email: [public@edsnamibia.com](mailto:public@edsnamibia.com) / [mleonard@edsnamibia.com](mailto:mleonard@edsnamibia.com) / [vaugustus@edsnamibia.com](mailto:vaugustus@edsnamibia.com)

Please do not hesitate to contact us if you require any further information



**EXCEL DYNAMIC  
SOLUTIONS (PTY) LTD**  
Reg. No: 2019/0817  
P.O. Box 997154, Maerua Mall  
Tel: +264 61 259 530  
Email: [info@edsnamibia.com](mailto:info@edsnamibia.com)

---

**Nerson Tjelos**

**Head of Project**

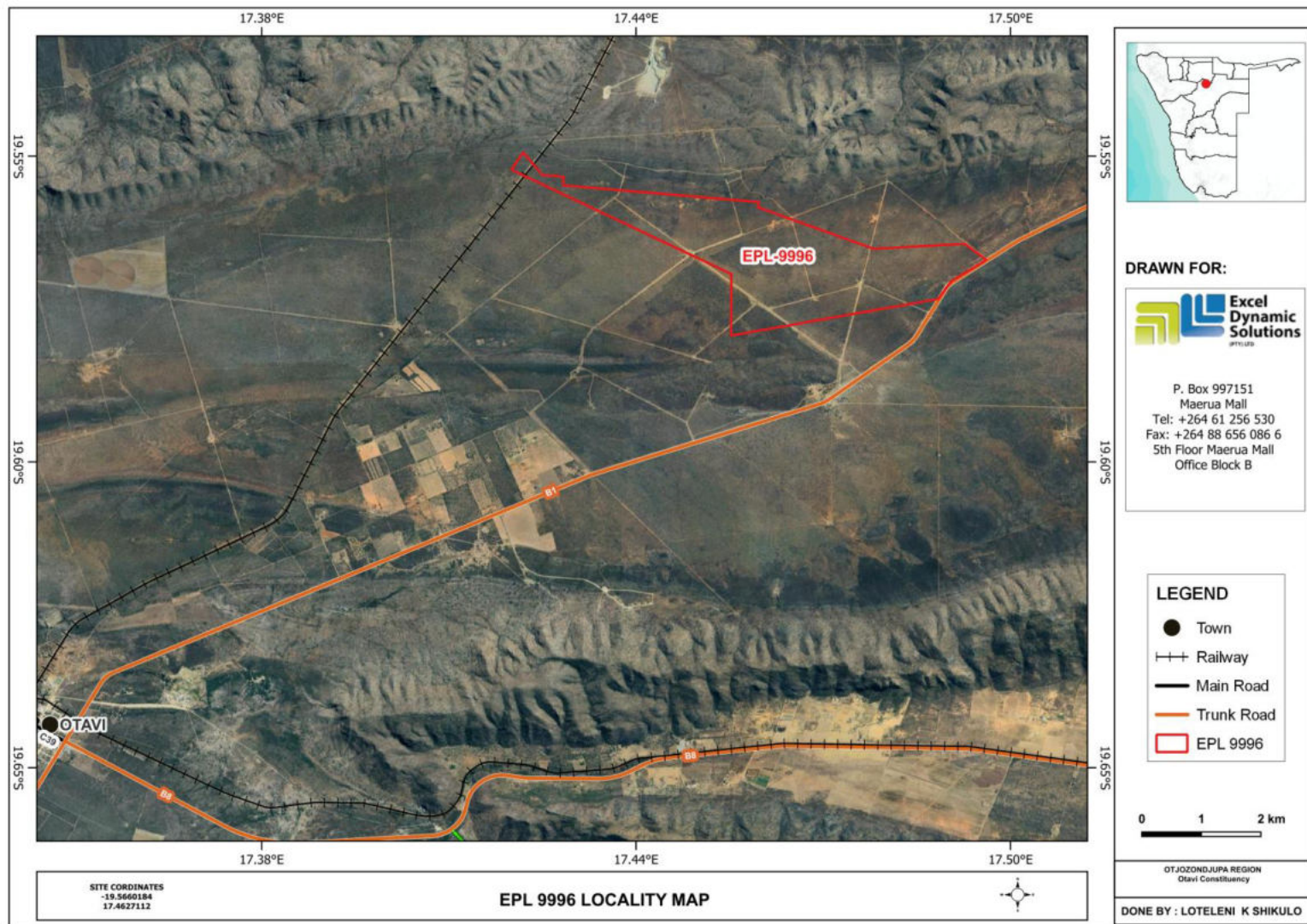


Figure 1: Locality map of EPL 9996.



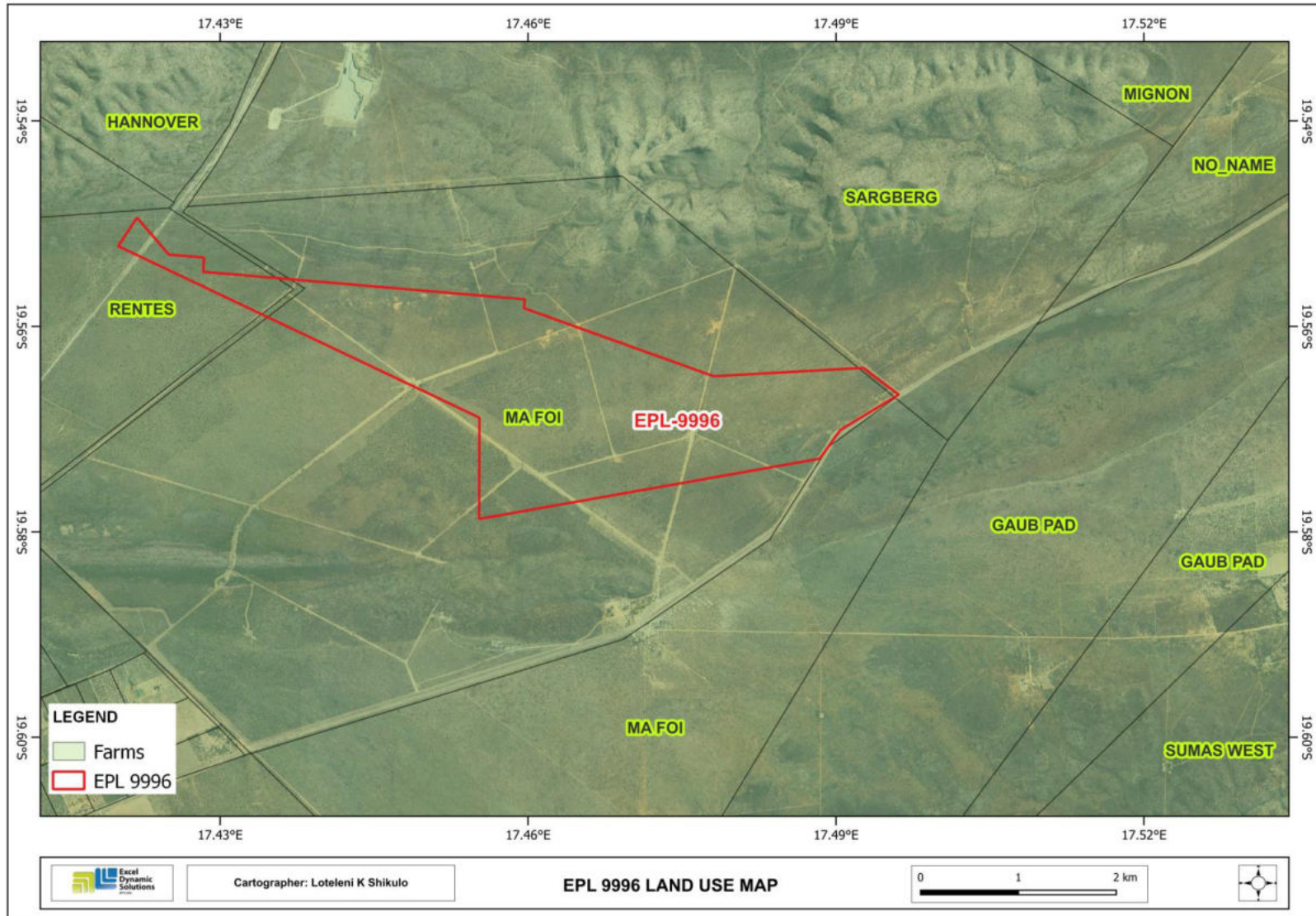


Figure 2: Land use map of EPL 9996.