

Operation and Management of the Adventure Camp & Lodge Development at Kasungwe in Malengalenga, Zambezi Region

Untouched Safaris Namibia has commissioned the Environmental study to comply with the Environmental requirements as outlined in the Environmental Management Act (EMA) (Act No.7 of 2007). This project is led and sponsored by Untouched Safaris Namibia and aims to enhance the livelihoods of the Dzoti people while fostering sustainable tourism and community engagement. Key aspects include:

1. Campsite Development: The adventure camp and lodge will contain 8 to 12 Guest Units and staff village accommodation.
2. Untouched Safaris Namibia will run the facility and the conservancy will get a percentage of the Net Profit.

The proposed new site is located on the Communal land that belongs to the Mayeyi Traditional Authority within the Dzoti Conservancy area at Kasungwe (Latitude – 23.73240 and Longitude – 18.33016) and is 5 km. This area sits on an area of about 3 hectares (Picture 1 below).

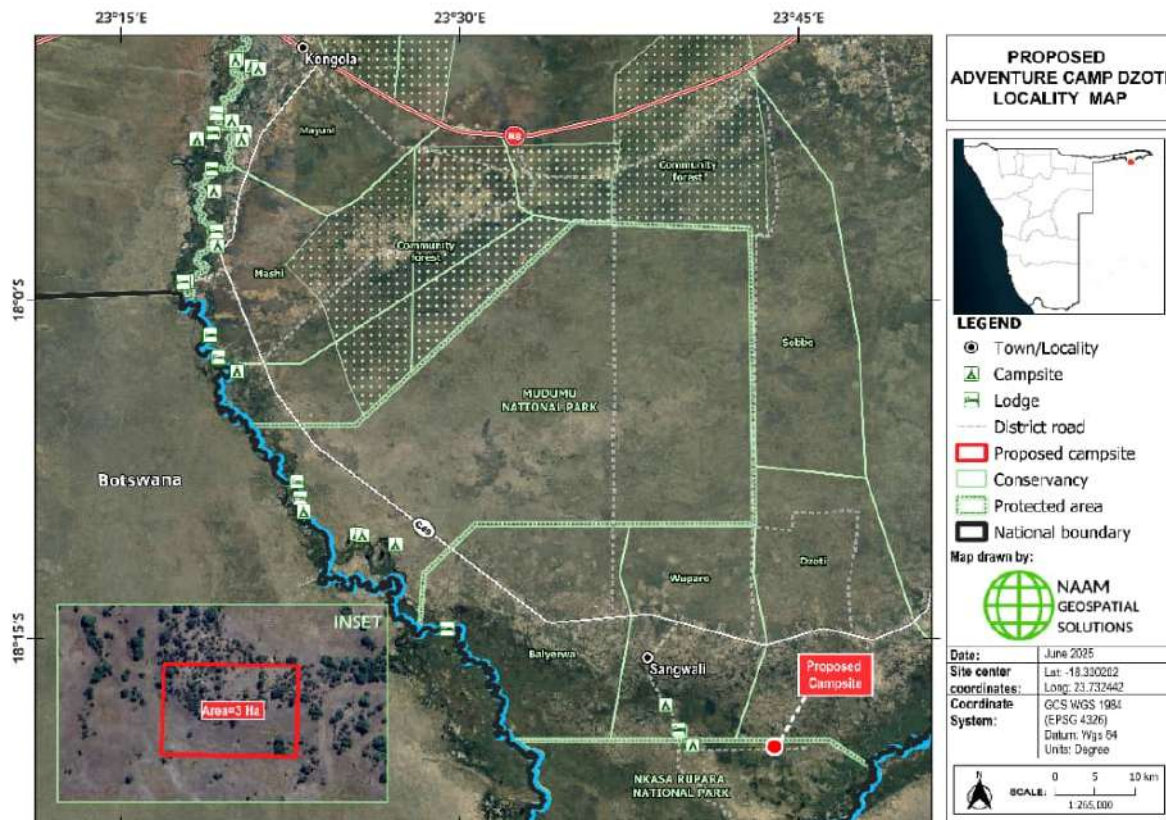


Table 1: Site GPS Coordinate

Proposed Site location		
#	Longitude	Latitude
A	-18.3302020	23.7324420
B	-18.3301670	23.7324920
C	-18.3301600	23.7324000
D	-18.3302170	23.7324870