

2.3. PROJECT LOCATION

The Exclusive Prospecting License is situated in North-east Namibia, with its boundaries extending across the Otjozondjupa Region and approximately 16 km North-east of the Otavi Town.

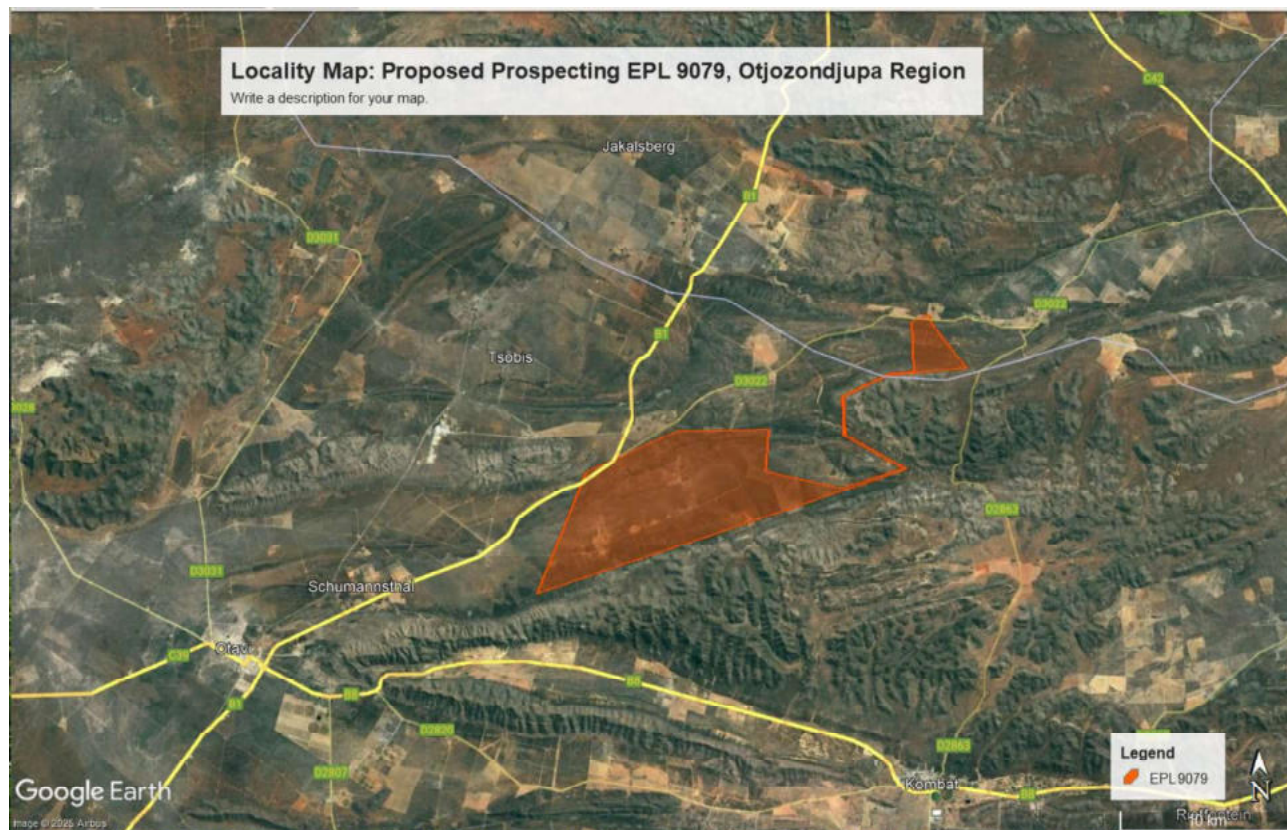


Figure 4: Show the location and area extent (8473 Ha) of the EPL 9079 in the Otjozondjupa Region

Table 3: Mining Claim's Centre coordinates of the proposed development site

Corner point	Latitude	Longitude
A – EPL 9079 Corner Point 1	19°36'37.81"S	17°29'58.73"E
B – EPL 9079 Corner Point 2	19°32'53.45"S	17°31'41.18"E
C – EPL 9079 Corner Point 3	19°31'36.26"S	17°34'41.51"E
D – EPL 9079 Corner Point 4	19°28'27.13"S	17°42'47.08"E
E – EPL 9079 Corner Point 5	19°29'53.35"S	17°44'34.99"E
F – EPL 9079 Corner Point 6	19°33'9.02"S	17°42'26.66"E
Commercial / Resettlement Farms		
Farm 1	Farm Kleinberg No. 743	
Farm 2	Farm Ombanje No. 787	
Farm 3	Farm	
Farm 4	Farm Sumas No. 746	
Farm 5	Farm Sumas No. 752	
Farm 6	Farm Maieberg No. 790	
Farm 7	Farm FMB / 759/REM	
Farm 8	Farm Elandstal No. 1331	
Farm 9	Farm Ghaub No. 590	

The EPL is accessible directly via the B1 Highway connecting Otavi to Tsumeb and then D3022 gravel road. Other section of the EPL will only be accessed by foot to ensure minimum impacts on the receiving environment.

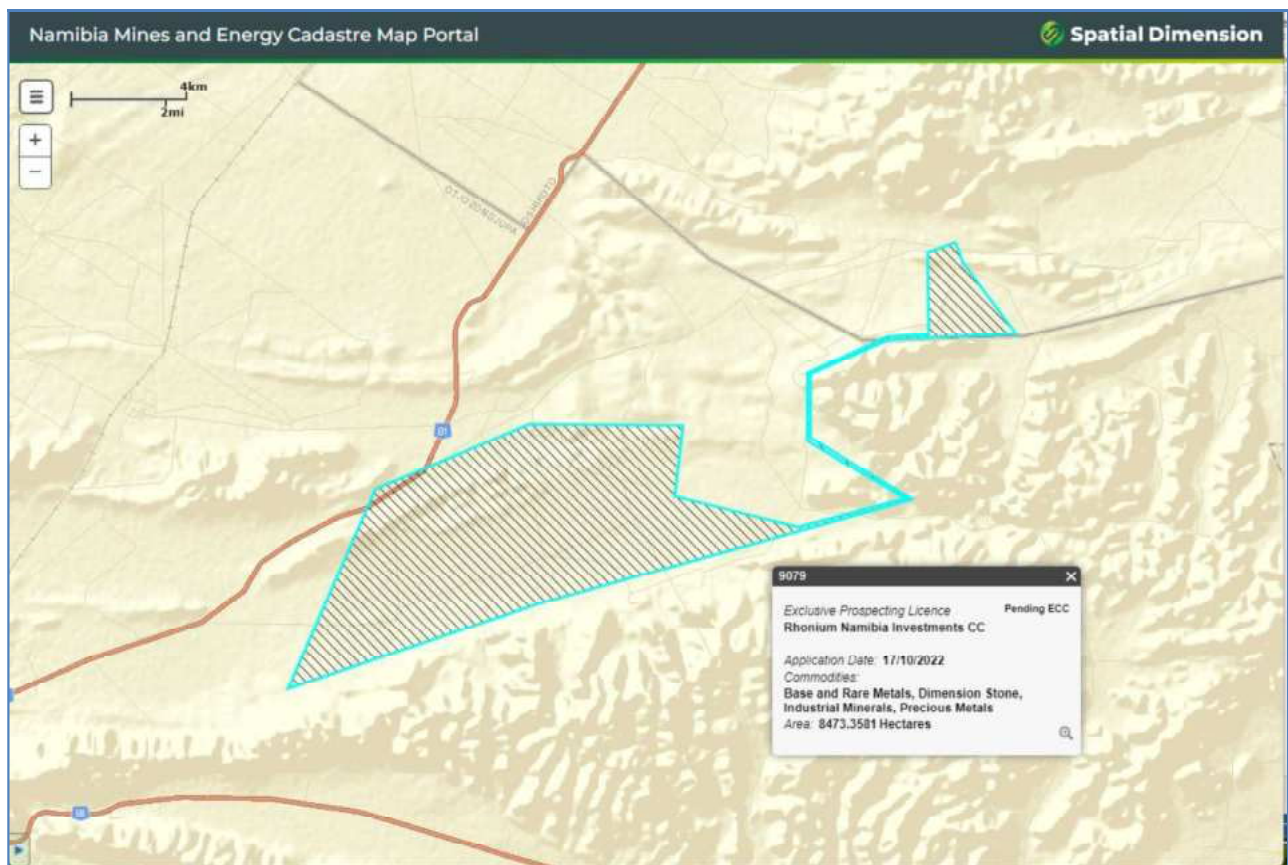


Figure 5: Evidence of the proposed prospecting license on the Ministry of Mine's cadastre (MME, 2025)

2.4. SUPPORTING INFRASTRUCTURE AND SERVICES

2.4.1 Current Land Uses

The area covered by the Exclusive Prospecting License (EPL 9079) is predominantly a small stock-farming area, the stock mostly consisting of animals such as sheep or goats. Game farming and irrigation farming along the Naute Dam and the Orange River have gained significantly in importance.

A number of lodges are found in the general surrounding areas but not necessary within the proposed project boundary, the Exclusive Prospecting License (EPL 9079). The area is not part of the communal conservancy system in Namibia with no protected area bordering the Exclusive Prospecting License area.

There are numerous existing tourism ventures in the area with the tourism potential viewed as relatively high (Mendelsohn et al. 2002). The socioeconomic activities in and around the Town of Otavi or Tsumeb is dependent on mining, farming (small stock and cattle), tourism and trading.

2.4.2 Supporting Infrastructure and Services

The Exclusive Prospecting License (EPL 9079) area is accessible directly via the B1 Highway connecting Otavi to Tsumeb and then D3022 gravel road. Other section of the EPL will only be accessed by foot to ensure minimum impacts on the receiving environment.