

- **Drilling / Bulk Sampling:** Should analyses by an analytical laboratory be positive, holes are drilled and drill samples collected for further analysis. This will determine the depth of the potential mineralization. If necessary new access tracks to the drill sites will be created and drill pads will be cleared in which to set the rig. However, at this stage the proponent does not intent to conduct any sampling activities._

A typical drilling site will consist of a drill-rig, drill core and geological samples store and a drill equipment parking and maintenance yard (including a fuel and lubricants storage facility).

2.2. PROJECT LOCATION

The proponent aim is to take advantage of the opportunity for self-employment and job creation that exist in the small-scale quarrying industry. Ms. Tjituka Investment intents on establishing and operating a quarry on their Exclusive Prospecting License (EPL 10170) site, is situated in Central Namibia, with its boundaries extending across the Otjozondjupa Region and bordering various Commercial Farms and Conservancies.

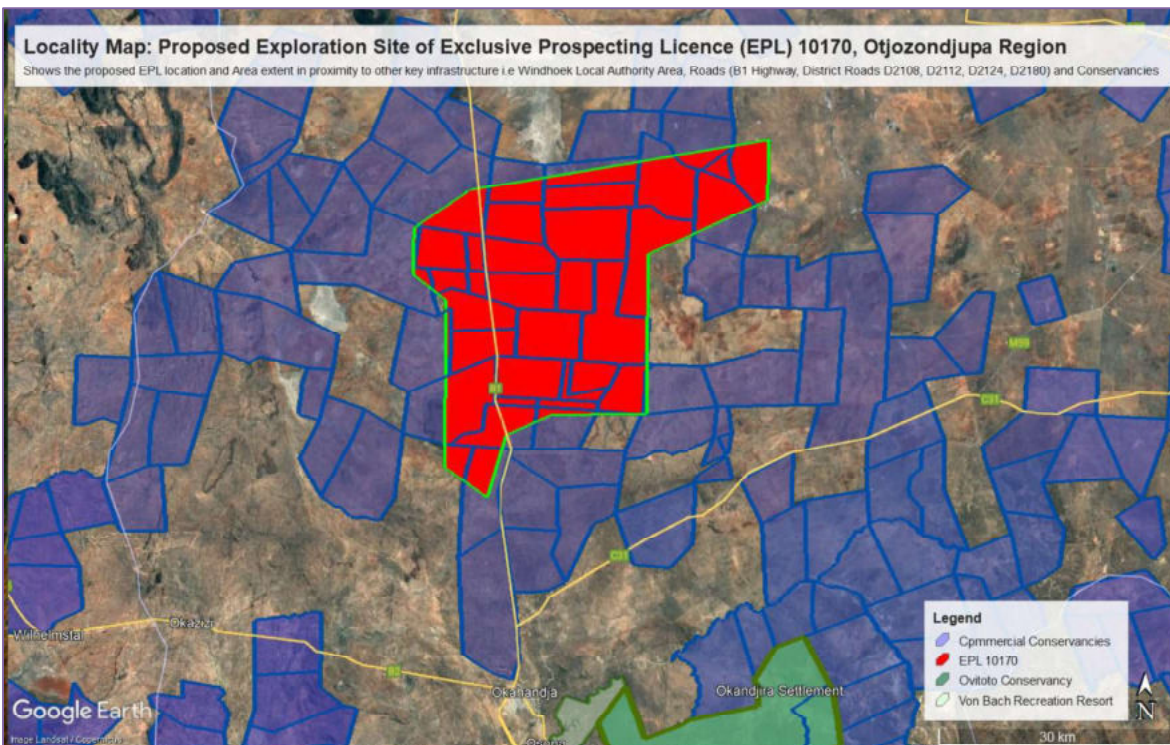


Figure 4: Locality map and area extent (100 498 Ha) of the proposed EPL 10170, Otjozondjupa Region

The EPL is accessible directly via the B1 Highway on the East and also via several district roads i.e. D2108, D2112, D2124, D2180 linked to numerous farm roads from the South. Other sections of the EPL shall be accessed via existing track used for farm / game patrol and the relevant property owners to access certain areas within the farm or commercial conservancies. Consequently the EPL area is accessible by 2x4 / 4x4 pick-up vehicle by the existing tracks and otherwise, the sensitive section of the area will only be accessed by foot to ensure minimum impacts on the receiving environment

Table 3: Prospecting License Centre coordinates of the proposed development site

| Corner point | Latitude | Longitude |
|---------------------------------|--------------------------------|---------------|
| A – EPL 10170 Corner Point 1 | 21°39'35.89"S | 17° 2'56.81"E |
| B – EPL 10170 Corner Point 2 | 21°45'13.74"S | 16°51'41.38"E |
| C – EPL 10170 Corner Point 3 | 21°43'4.60"S | 16°48'20.48"E |
| D – EPL 10170 Corner Point 4 | 21°30'13.71"S | 16°46'3.34"E |
| E – EPL 10170 Corner Point 5 | 21°24'9.98"S | 16°50'10.48"E |
| F – EPL 10170 Corner Point 6 | 21°20'34.80"S | 17°11'41.91"E |
| G – EPL 10170 Corner Point 7 | 21°24'40.99"S | 17°11'47.83"E |
| H – EPL 10170 Corner Point 8 | 21°28'34.46"S | 17° 3'7.26"E |
| Commercial / Resettlement Farms | | |
| Farm 1 | Farm Okatjongeama No. 170 | |
| Farm 2 | Farm Weltevrede No. 239 | |
| Farm 3 | Farm Okatjongeama West No. 171 | |
| Farm 4 | Farm Die Helfte No. 241/001 | |
| Farm 5 | Farm Tiefenbach No.173 | |
| Farm 6 | Farm Neu-Bassermann No. 314 | |
| Farm 7 | Farm Vrede No. 242/REM | |
| Farm 8 | Farm Come Back No. 245/003 | |
| Farm 9 | Farm Backstrom No. 269 | |
| Farm 10 | Farm Prelude No. 246 | |
| Farm 11 | Farm Sonskyn No. 161/001 | |
| Farm 12 | Farm Okaruheke No. 45 | |
| Farm 13 | Farm Hochfels-Ary No. 386/REM | |
| Farm 14 | Farm Neu Okandjose No. 313 | |
| Farm 15 | Farm Okakeua No. 168 | |
| Farm 16 | Farm Okamaja No. 159 | |

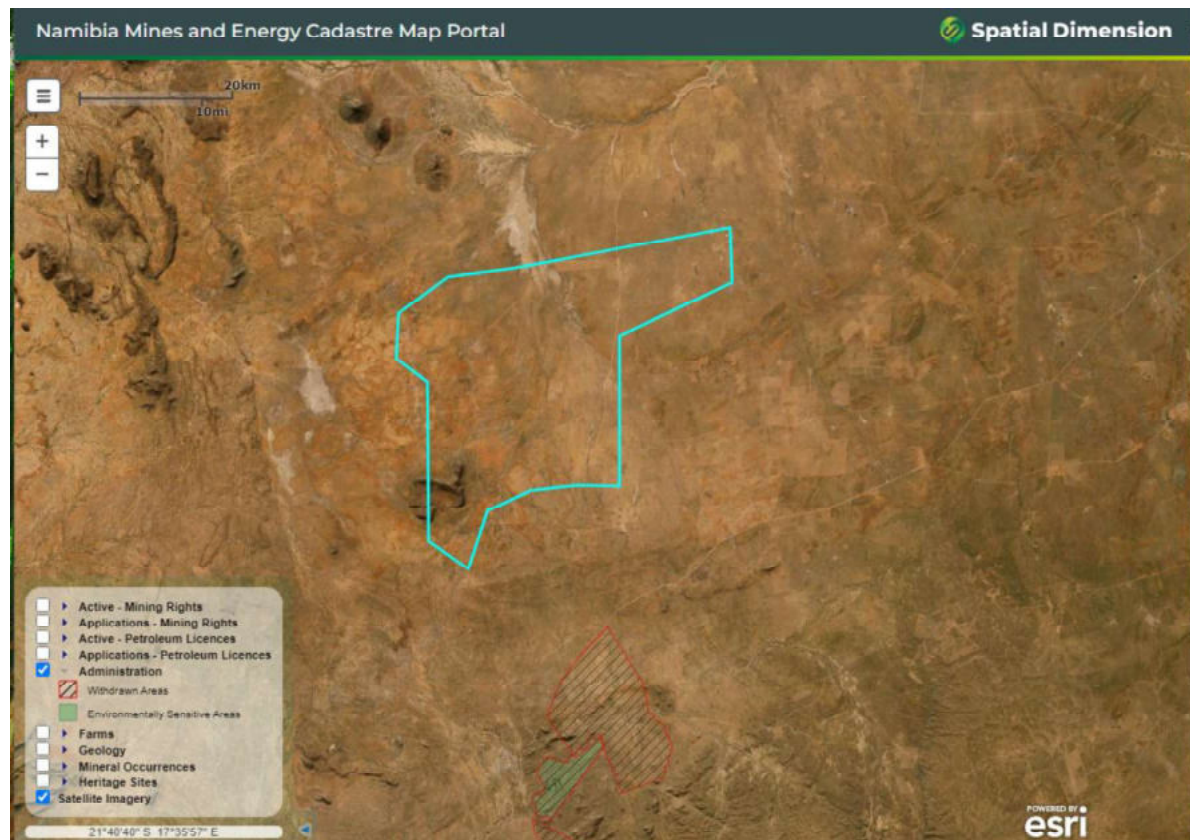


Figure 5: Evidence of the proposed prospecting license on the Ministry of Mine's cadastre (MME, 2025)