

- **Drilling / Bulk Sampling:** Should analyses by an analytical laboratory be positive, holes are drilled and drill samples collected for further analysis. This will determine the depth of the potential mineralization. If necessary new access tracks to the drill sites will be created and drill pads will be cleared in which to set the rig. However, at this stage the proponent does not intent to conduct any sampling activities._

A typical drilling site will consist of a drill-rig, drill core and geological samples store and a drill equipment parking and maintenance yard (including a fuel and lubricants storage facility).

2.2. PROJECT LOCATION

The proponent aim is to take advantage of the opportunity for self-employment and job creation that exist in the small-scale quarrying industry. Ms. Tjituka Investment intents on establishing and operating a quarry on their Exclusive Prospecting License (EPL 10169) site, is situated in Central Namibia, with its boundaries extending across the Khomas Region and bordering the Windhoek Municipal Townlands to the East, the Daan Viljoen Game Park to the South and several commercial Farms.

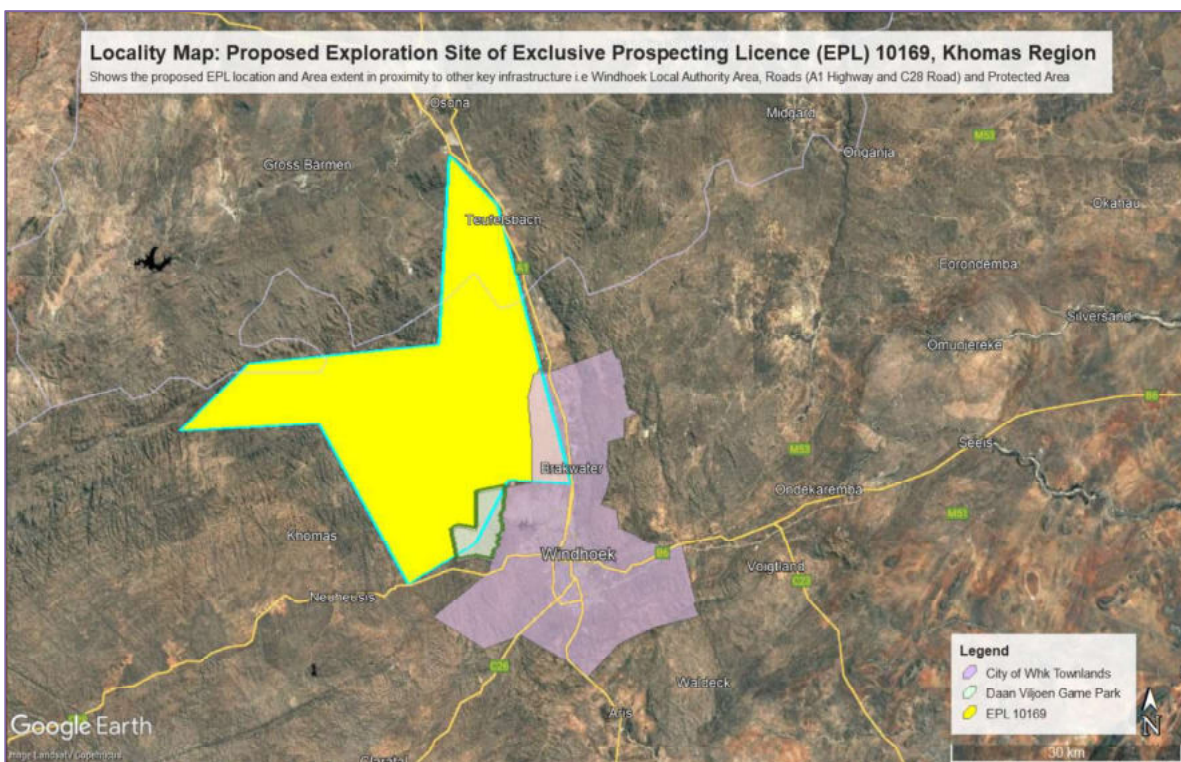


Figure 4: Show the location and area extent of the proposed Prospecting License 10169 in the Hardap Region

The EPL is accessible directly via the A1 Highway on the East and the C28 Gravel Road linked to numerous farm roads from the South. Other sections of the EPL shall be accessed via existing track used for farm / game patrol and the relevant property owners to access certain areas within the farm or commercial conservancies. Consequently the EPL area is accessible by 2x4 / 4x4 pick-up vehicle by the existing tracks and otherwise, the sensitive section of the area will only be accessed by foot to ensure minimum impacts on the receiving environment

Table 3: Prospecting License Centre coordinates of the proposed development site

Corner point	Latitude	Longitude
A – EPL 10169 Corner Point 1	22° 5' 42.63"S	16° 55' 51.91"E
B – EPL 10169 Corner Point 2	22° 9' 27.14"S	16° 59' 41.89"E
C – EPL 10169 Corner Point 3	22° 28' 58.00"S	17° 4' 37.01"E
D – EPL 10169 Corner Point 4	22° 35' 38.99"S	16° 52' 6.19"E
E – EPL 10169 Corner Point 5	22° 24' 9.48"S	16° 45' 46.25"E
F – EPL 10169 Corner Point 6	22° 24' 38.88"S	16° 34' 53.92"E
G – EPL 10169 Corner Point 7	22° 19' 55.73"S	16° 40' 21.78"E
H – EPL 10169 Corner Point 8	22° 18' 54.31"S	16° 54' 39.20"E
Commercial / Resettlement Farms		
Farm 1	Farm Klein Okapuka No. 51/A	
Farm 2	Farm Otjihavera No. 62	
Farm 3	Farm Otjiseva No. 420	
Farm 4	Farm Dusterbrook No. 60/REM	
Farm 5	Farm Godeis No. 419/2	
Farm 6	Farm Monde Christo No. 46/1	
Farm 7	Farm Tugab Ost No. 4/9	
Farm 8	Farm Okatore No. 493	
Farm 9	Farm Kleinberg No. 480	
Farm 10	Farm Kaliber No. 335	
Farm 11	Farm Klein Onduno No. 459	
Farm 12	Farm Ongus No. 38	
Farm 13	Farm Hochfels-Ary No. 386/REM	
Farm 14	Daan Viljoen Game Reserve	

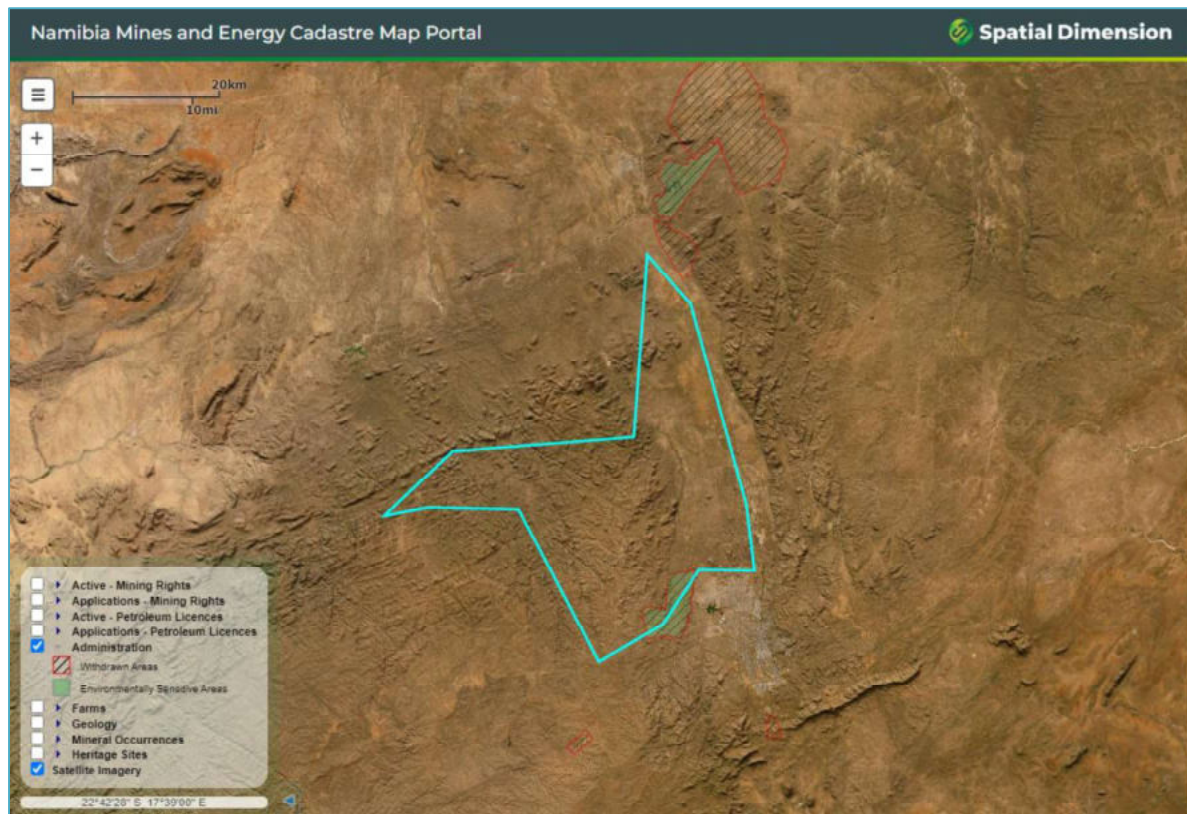


Figure 5: Evidence of the proposed prospecting license on the Ministry of Mine's cadastre (MME, 2025)