

- **Drilling / Bulk Sampling:** Should analyses by an analytical laboratory be positive, holes are drilled and drill samples collected for further analysis. This will determine the depth of the potential mineralization. If necessary new access tracks to the drill sites will be created and drill pads will be cleared in which to set the rig. However, at this stage the proponent does not intent to conduct any sampling activities._

A typical drilling site will consist of a drill-rig, drill core and geological samples store and a drill equipment parking and maintenance yard (including a fuel and lubricants storage facility).

2.2. PROJECT LOCATION

The proponent aim is to take advantage of the opportunity for self-employment and job creation that exist in the small-scale quarrying industry. Ms. Tjituka Investment intents on establishing and operating a quarry on their Exclusive Prospecting License (EPL 10168) site, situated in Southern Namibia, with its boundaries extending across the Hardap Region and approximately 70 km South-west of the Maltahöhe Village within the Gibeon Constituency.

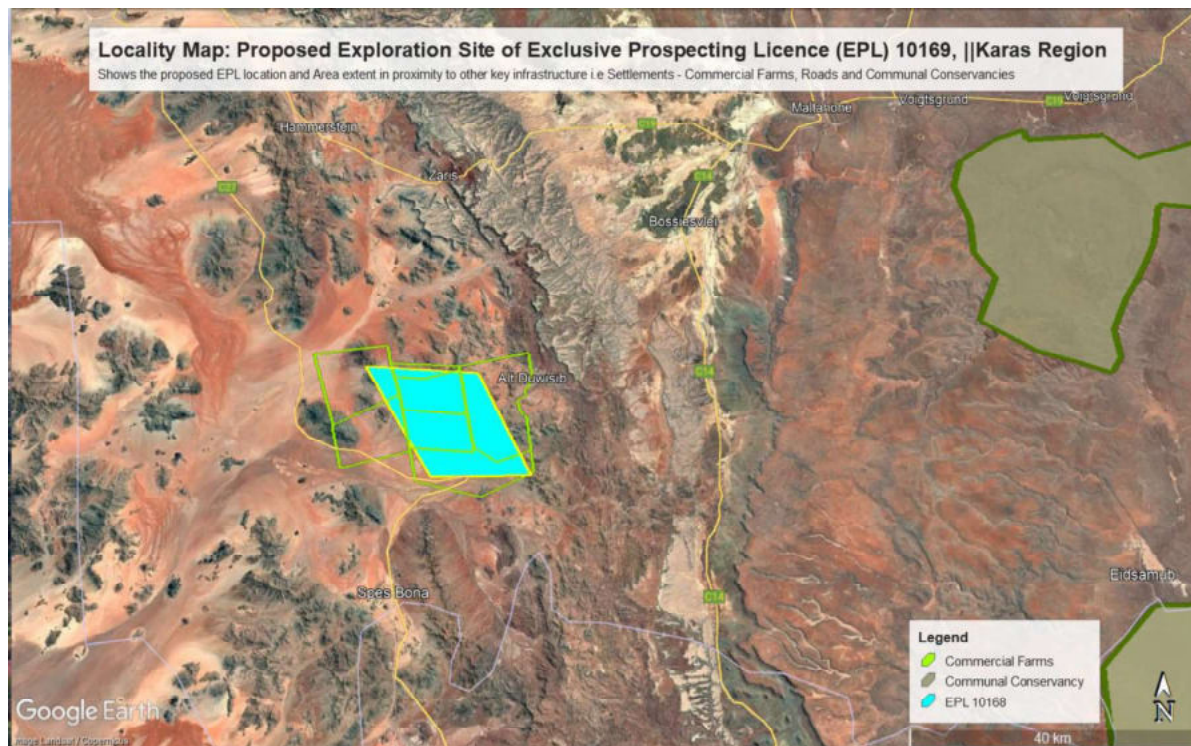


Figure 4: Show the location and area extent of the proposed Prospecting License 10168 in the Hardap Region

It is serviced by a number of district gravel road namely from Maltahöhe, primarily exiting through the C12 into the North-western direction and the down the D298 or exiting via the B1 (Trans-Oranje Highway) and brunching westwards at about 35 km onto the C10 and again connecting to the D298 gravel road.

Table 3: Prospecting Claim's Centre coordinates of the proposed development site

Corner point	Latitude	Longitude
A – EPL 10168 Corner Point 1	25°14'32.75"S	16°26'11.87"E
B – EPL 10168 Corner Point 2	25°14'0.36"S	16°15'51.00"E
C – EPL 10168 Corner Point 3	25°23'7.98"S	16°22'10.81"E
D – EPL 10168 Corner Point 4	25°23'5.65"S	16°31'7.24"E
Commercial / Resettlement Farms		
Farm 1	Farm Duwisib No. 84/006	
Farm 2	Farm Spioenkop No. 87/0087	
Farm 3	Farm Lillispos No. 87/002	
Farm 4	Farm Betta No. 87/001	
Farm 5	Farm Verde No. 80/REM	

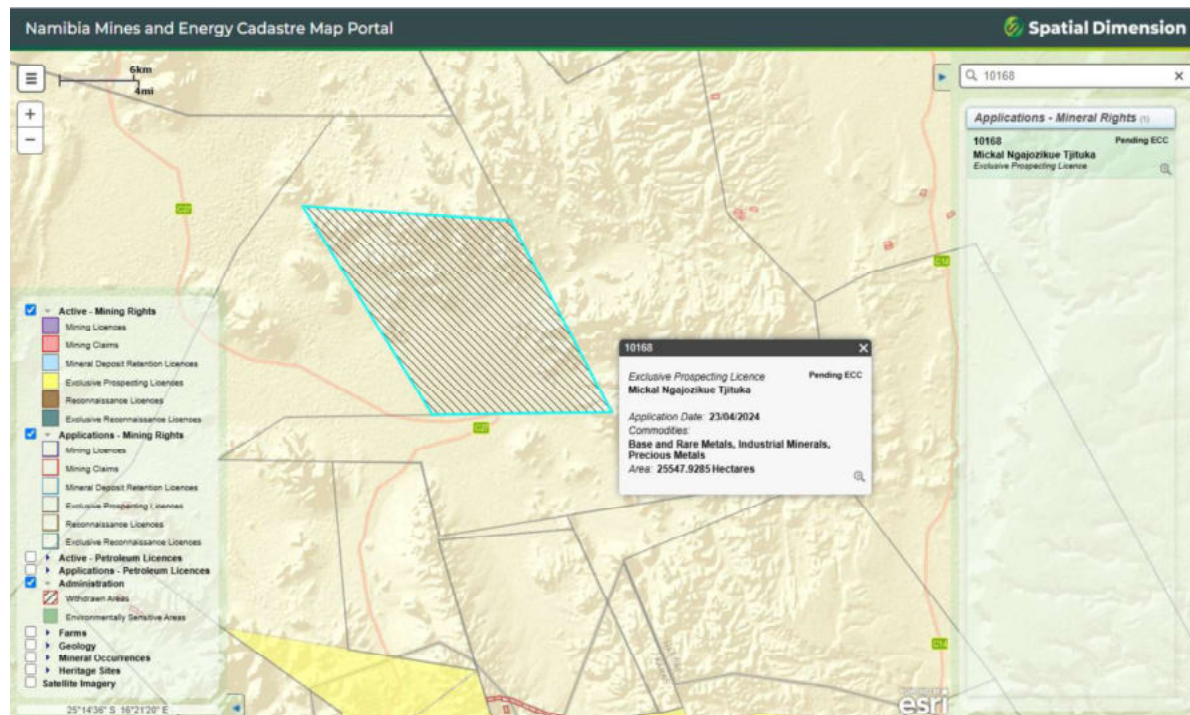


Figure 5: Evidence of the proposed prospecting license on the Ministry of Mine's cadastre (MME, 2025)

2.3. SUPPORTING INFRASTRUCTURE AND SERVICES

2.3.1 Current Land Uses

The area (Daweb Constituency) covered by the Exclusive Prospecting License (EPL 10168) is predominantly a small stock-farming area, the stock mostly consisting of animals such as sheep or goats. It is an electoral constituency in the Hardap Region of Namibia created in August 2013, following a recommendation of the Fourth Delimitation Commission of Namibia, and in preparation of the 2014 general election. Daweb constituency was formed from the western part of Gibeon Constituency. The administrative centre of Daweb Constituency is the village of Maltahöhe. It also contains a number of small settlements, among them Uibes.

A number of lodges are found in the general surrounding areas but not necessary within the proposed project boundary, the Exclusive Prospecting License (EPL 10168). The area is not part of the communal conservancy system in Namibia with no protected area bordering the Exclusive Prospecting License area.