

ENVIRONMENTAL AND SOCIAL IMPACT ASSESSMENT (ESIA) FOR THE PROPOSED CONSTRUCTION AND OPERATION OF AN 8KM ACCESS GRAVEL ROAD FROM MR124 (C43) OKATUMBA TO OTUANI VILLAGE (8KM), KUNENE REGION, NAMIBIA.

[BID: ESIA Study](#)

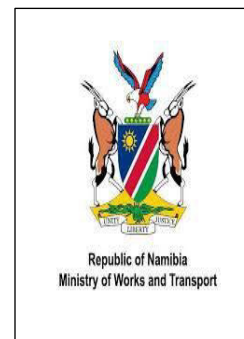


BACKGROUND INFORMATION DOCUMENT (BID)

ENVIRONMENTAL AND SOCIAL IMPACT ASSESSMENT (ESIA) FOR THE PROPOSED CONSTRUCTION AND OPERATION OF AN 8KM ACCESS GRAVEL ROAD FROM MR124 (C43) OKATUMBA TO OTUANI VILLAGE (8KM), KUNENE REGION, NAMIBIA.

PROJECT PROPONENT:

Ministry of Works and Transport
6719, Bell Street, Snyman Circle, Ausspanplatz
Private Bag 13341
Windhoek
Namibia



ENVIRONMENTAL ASSESSMENT CONSULTANT:

ENVIROPLAN CONSULTING CC
Unit 19 Reinush Courts, Rocky Crest
PO Box 81042, Olympia
Telephone: +264 813634904
info@enviroplanconsult.com



1 PROJECT BACKGROUND

“Access roads are crucial for connecting remote areas, facilitating construction and other projects, and supporting economic activities by improving transportation, accessibility, and safety” A I. The Ministry of Works and Transport have identified need to develop an access gravel road from **Okatumba** settlement off **C43 Road to Otuari village**. It is under **Opuwo Rural constituency**’s area of jurisdiction and approximately 8 km. The proposal intends to improve the accessibility to health, socio and economic amenities. Opuwo Rural constituency sits on 25, 758 square kilometres of land and C34 road can be used to explore the **Kaokoveld desert** and has a population of 14 850. Economic activity in this area is centred on communal livestock farming, tourism and integrated wildlife management. Otuari is located approximately 60 km from Opuwo along the C43 road to Seisfontein. The village has been previously under privileged from network coverage, health and social welfare and development.

Otuani village has the potential of becoming the mining hub of the Kunene region with the plans to establish a copper processing plant. Other potential areas are tourist facilities, butchery and tannery factory, etc.

The proposed access road came into consideration after the Kunene regional council and Opuwo Rural constituency raised concerns over the accessibility to newly established rural constituency office, Otuari clinic and primary school. These amenities offer a very vital social and economic benefits to the community and the region of Kunene which seems side-lined when comes to development. Roads within the region are mostly gravel and fairly good during when it comes to maintenance. The need to establish a gravel access road was an issue which was notably a hindrance to accessibility mostly during rainy seasons whereby the existing paths were making the road users a very bad experience when visiting the mentioned services.

1.1 Why an Environmental and Social Impact Assessment (ESIA) Study

As per the requirements of the Namibian environmental legislation (Environmental Management Act (No. 7 of 2007 and the Environmental Impact Assessment Regulations of 2012), an EIA is required to obtain an Environmental Clearance Certificate from the Ministry of Environment,

ENVIRONMENTAL AND SOCIAL IMPACT ASSESSMENT (ESIA) FOR THE PROPOSED CONSTRUCTION AND OPERATION OF AN 8KM ACCESS GRAVEL ROAD FROM MR124 (C43) OKATUMBA TO OTUANI VILLAGE (8KM), KUNENE REGION, NAMIBIA.

[BID: ESIA Study](#)

Forestry and Tourism (MEFT) before the project can proceed. This is because under the 2012 Environmental Impact Assessment (EIA) Regulations of the Environmental Management Act (EMA) No. 7 of 2007. It is a listed activity that may not be undertaken without an Environmental Clearance Certificate (ECC). This activity is listed under the following relevant sections:

Table 1: Listed Activities -Environmental Management Act No. of 2007

3: Mining and Quarrying Activities 3.3 Resource extraction, manipulation, conservation and related activities	10: Infrastructure 10.1 The construction of- (b) public roads
---	--

In this respect EnviroPlan Consulting have been appointed to carry out an Environmental Assessment study to obtain an environmental clearance certificate as per the requirements by the Ministry works and transport as well as the Ministry of Environment, Forestry and Tourism in terms of the proposed infrastructural development activities. During the construction phase the following materials will be required: Road construction materials will be extracted from new and existing borrow pits. Raw water abstraction from nearby water sources and other potential water sources will be determined.

The study will incorporate biophysical, ecological and socio-economic baseline investigations relating to the proposed project.

1.2 Aims & Objectives of the ESIA Process

The aims of this EIA:

- To comply with Namibia's Environmental Assessment Policy, Environmental Management Act (No. 7 of 2007) with its 2012 EIA Regulations and to;

ENVIRONMENTAL AND SOCIAL IMPACT ASSESSMENT (ESIA) FOR THE PROPOSED CONSTRUCTION AND OPERATION OF AN 8KM ACCESS GRAVEL ROAD FROM MR124 (C43) OKATUMBA TO OTUANI VILLAGE (8KM), KUNENE REGION, NAMIBIA.

BID: ESIA Study

- Consult all relevant stakeholders, interested and affected parties such as The, traditional leadership (Opuwo Rural Constituency), Ministry of Environment Forestry and Tourism and Otuari residents to ensure that their inputs are considered;
- To set up a grievance coordination system.
- To identify Environmental and Social safeguards and concerns prior to project implementation.
- To assess the significance of issues and concerns raised;
- Review the legal and policy framework and its relevance to this project;
- To determine the environmental and social impacts of the development and assess site suitability.
- To identify all environmental and social sensitivities that may be affected by the proposed development and monitoring requirements during construction thereto.
- Develop a clear, concise and practical Environmental and Social Management Plan (ESMP) which includes recommendations and methods to minimize the identified negative environmental impacts of the proposed project.
- To institute processes for Environmental monitoring and management for compliance to the developed Environmental and Social Management Plan.

1.3 PROJECT LOCATION

The proposed project will occur in Otuari a small village in Kunene region. It is under the Opuwo Rural constituency's area of jurisdiction. All burrow pits to be identified and re habilitated will be within the rural constituency's area of influence. This constituency sits on 25, 758 square kilometres of land and has a population of 14 850. Economic activity in this area is centred on communal livestock farming and conservancies. Otuari is located approximately 65 km from Opuwo along the C43 road to Seisfontein. Almost the entire Kunene Region is characterized by Conservancies and Otuari village is within the Ombujokanguindi Conservancy.

ENVIRONMENTAL AND SOCIAL IMPACT ASSESSMENT (ESIA) FOR THE PROPOSED CONSTRUCTION AND OPERATION OF AN 8KM ACCESS GRAVEL ROAD FROM MR124 (C43) OKATUMBA TO OTUANI VILLAGE (8KM), KUNENE REGION, NAMIBIA.

BID: ESIA Study

Table 2 below shows the proposed site coordinates.

Table 2: Project site coordinates (8km Access Road off C43 road Okatumba to Otuni village)

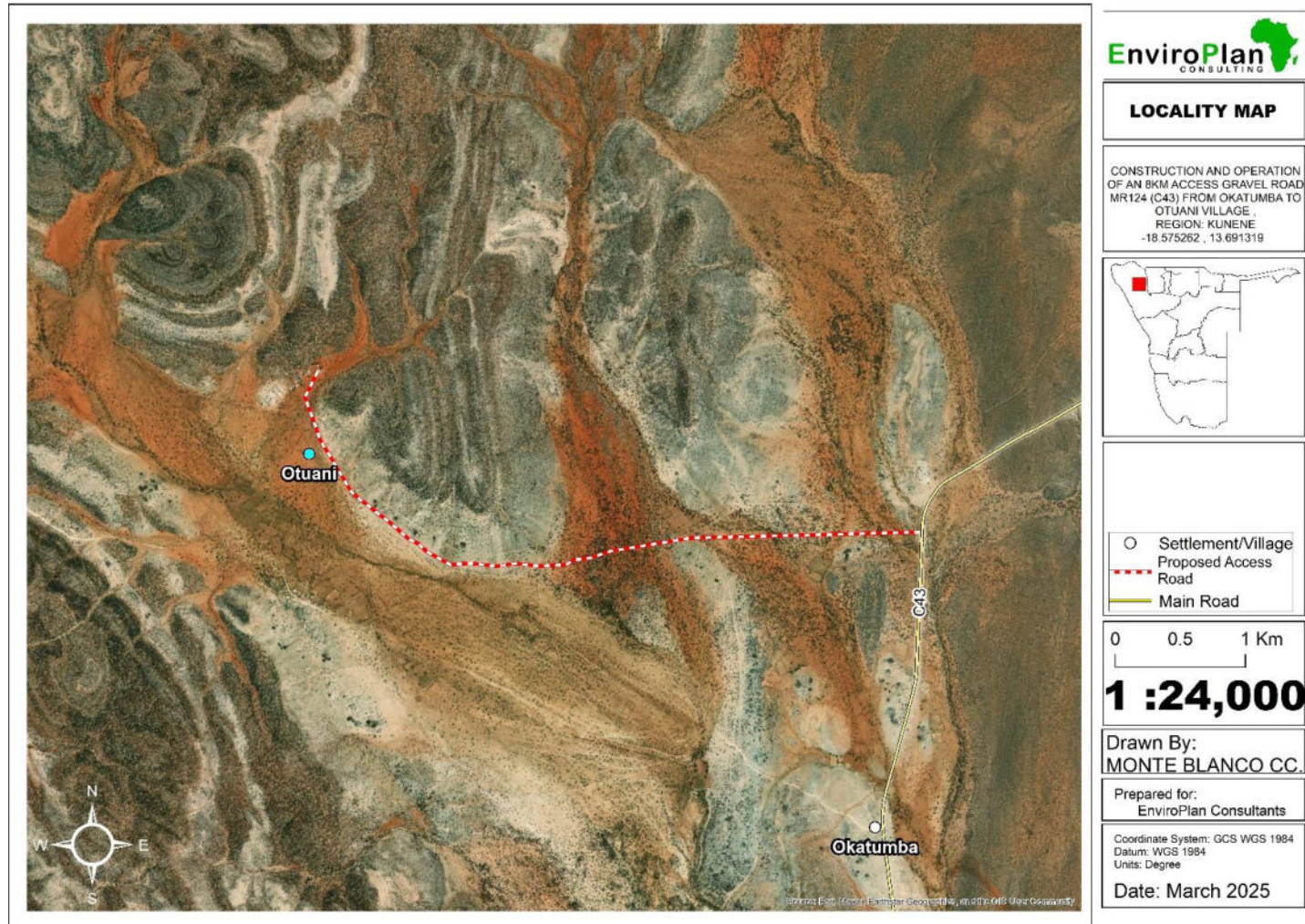
Point number	Latitude	Longitude
Starting point- Point 1	-18, 57291	13,72089
Point 2 - Proposed route	-18, 57304	13, 71242
Point 3 - Alternative route	-18, 57091	13, 71168
Point 4 - Alternative and proposed meet with existing track road	-18, 57332	13, 70496
Point 5 – Access to shopping Centre	-18, 56688	13, 67833
Point 6 – Opuwo rural constituency offices	-18, 56359	13, 67582
Point 7 – Primary school	-18, 56309	13 67851
Point 8 – Clinic	-18, 56179	13, 67921

Figure 1 overleaf shows the proposed site Map.

ENVIRONMENTAL AND SOCIAL IMPACT ASSESSMENT (ESIA) FOR THE PROPOSED CONSTRUCTION AND OPERATION OF AN 8KM ACCESS GRAVEL ROAD FROM MR124 (C43) OKATUMBA TO OTUANI VILLAGE (8KM), KUNENE REGION, NAMIBIA.

[BID: ESIA Study](#)

Figure 1: Proposed project site Map



2 PROJECT DESCRIPTION

Road as an infrastructural development project will trigger activities in various phases. For this EIA, the phase-based activities were categorized to enable impact assessment and analysis. The different project sections are as follows:

2.1.1. Construction Phase (Site Preparation)

Access agreements will guide the working relationship between local authorities and construction team. The contractor will undertake initial site visits to identify appropriate sites for the establishment of field camps. The field camps are for the safe keep of the construction equipment and vehicles before use. Site preparation activities will begin once surface drainage and ground water conditions are understood. The project proponent will highlight all ecological sensitive areas jointly with conservancy committee and off site borrow pits to be identified and rehabilitated as per Environmental and Social Management Plan (ESMP) design.

Land clearing: small land parcels will be cleared for the establishment of base or field camps and staging areas. Proponent shall ensure that areas identified are those that present minimal disturbance to the natural environment and wildlife.

Creation of access routes and haul tracks: Apart from the existing roads network leading to target areas, additional tracks (extensions from existing roads) may be created. Additional roadways may be considered for the purposes of accessing target sites. Where deemed necessary, graveling, and compaction of vehicle track's surfaces may be considered to allow for less track maintenance and seam less flow of traffic.

Fencing: Where deemed feasible, fences will be erected around field camps and target areas. Fencing will serve to keep out livestock from target sites.

2.1.2. Operational Phase

The operational phase will be characterized by day to day use of the access road. After the completion of the construction phase the contractor has to make sure to do the following:

Site Rehabilitation: Dug out trenches will be back filled with waste rock (gangue). Stockpiled top soil will be returned to the backfilled areas. Sites will also be re-vegetated and returned to a pre-construction state. Rehabilitation will be done concurrently with the project development.

Water requirements: Water will be sourced from existing boreholes. About 100,000 liters (80 m³) per day would be required. This amount of water is aimed at suppressing dust around tipping areas and vehicle tracks. Approximately 400 liters of domestic water will be needed per day.

Waste management: Waste material generated will be in the form of rock material (non-mineral) and derived from trenching activities. Insignificant amounts of domestic waste will be generated by the mining team. Domestic or general waste will be transported out of the project site. There are no licensed waste disposal sites in the project area.

Sewage Management: During construction, sufficient portable chemical toilets will be provided for workers and appropriately emptied according to their manufacturer's operational standards and legislated occupational sanitary provisions. Licensed waste contractors will provide sewage removal services.

Construction equipment, Materials and Services:

Construction equipment will be sourced from contractors proximate to the project site. Where essential, equipment deemed will need to be sourced from elsewhere in the country and/or abroad as per the required and approved operating standards.

Labor sourcing: long term and short-term employment opportunities will be created during the duration of construction activities. Semi and non-skilled work will be made available to locals.

Housing: Personnel will be accommodated at an identified camp area. Before use of a camp, an environmental risk assessment will be conducted and submitted together with the biannual report of the mining activities.

2.1.3. Decommissioning/Closure of the construction Phase

This phase will involve the removal of equipment and dismantling of facilities and safe closure. All trenches/ borrow pits will be backfilled. The surface affected by road construction activities will be rehabilitated and re-vegetated in accordance with applicable standards

2.1.4. Environmentally sensitive areas identified

All Environmental sensitive areas will be identified.

3 THE PUBLIC PARTICIPATION PROCESS AND CONSULTATION

The Public Participation Process (PPP) is an integral part of the Environmental and Social Impact Assessment process by providing for a platform to all Interested and Affected Parties (I&APs) to obtain information about the proposed project, to review project documentation, to provide input and voice any concerns concerning the project.

A public meeting will be conducted and this meeting will avail an opportunity to comment, ask questions and raise any concerns regarding the project implementation. All comments will be recorded and considered in the Environmental Management Plan that will be submitted to the Ministry of Environment for review. In addition, conditions for environmental compliance monitoring will also be derived from the public meeting and stakeholders' recommendations.

3.1 Public Participation Modes: Consultation Meetings

This Public Consultation process forms an important component of the Environmental Assessment process. It is defined in the EIA Regulations (2012), as a "process in which potential interested and affected parties are given an opportunity to comment on, or raise issues relevant to, specific matters". As a Stakeholder or I&AP, you can participate through the following:

- **Providing comments and concerns and or suggestions in response to the newspaper adverts, public printed notices and in the public consultation meetings,**
- **A public meeting will be conducted on site (Otuani village). All registered and affected parties are welcome to meet with the local community on a date to be announced.**

ENVIRONMENTAL AND SOCIAL IMPACT ASSESSMENT (ESIA) FOR THE PROPOSED CONSTRUCTION AND OPERATION OF AN 8KM ACCESS GRAVEL ROAD FROM MR124 (C34) OKATUMBA TO OTUANI VILLAGE (8KM), KUNENE REGION, NAMIBIA.

BID: ESIA Study

- I&APs and identified stakeholders are welcome to raise their opinions within the registration period not later than the 30th March 2025. To register or request documents submit your details in writing to the Environmental Consultant.

4 POTENTIAL ENVIRONMENTAL ASPECTS AND SOCIAL IMPACTS

POTENTIAL PROJECT IMPACTS

POTENTIAL IMPACTS	ASSESSMENT TO BE UNDERTAKEN
NEGATIVE IMPACTS	
Land Use Change (Aesthetic value)	Baseline Assessment and Sensitive Receptors Mapping
Impacts on fauna and Flora	Vertebrate fauna (wildlife) and flora (vegetation) baseline assessment.
Impacts on surface and groundwater resources (abstraction, discharge and spillages)	Surface and Groundwater Assessment
Waste generation	Baseline assessment
Culture, heritage and archeological impacts	Baseline assessment
Health and Safety hazards	Baseline assessment
Displacement of properties	Displacement, Resettlement and Compensation Plan
Cumulative impacts of the project Operation	Construction Environmental Compliance Monitoring and Reporting
POSITIVE IMPACTS	
Road infrastructure development	Temporary employment creation
Boost in local economy and investment capacity	Improved traffic safety

5 Environmental and Social Impact Assessment

5.1 Environmental and Social Impact Assessment reporting

After the baseline assessment to identify the potential impacts relevant to the assessment/study has been completed, an Environmental Scoping Report (ESR) will be compiled. The extent or depth of assessment will be (based on legislative requirements, international conventions, expert knowledge and public involvement). To identify alternative solutions that avoid, mitigate or compensate adverse impacts on biodiversity (including the option of not proceeding with the development). The ESR will include the findings of alternative designs or project route(s) which avoid the impacts, as well as safeguards and incorporating grievance coordination mechanisms in the design of the project, or providing compensation for adverse impacts.

The ESR will also detail proposed mitigation options for all identified impacts. The final ESR with inputs from relevant government authorities will be shared with public, I&APs and stakeholders for review and commenting.

The finalised ESR will determine the need for further specialist assessments, and where there is no need for further assessments (Specialists) a detailed practical and concise ESMP will be developed.

5.2 Environmental and Social Management Plan

Environmental and Social Management Plan (ESMP) is a tool utilised to mitigate and/ or enhance the potential impacts of the proposed project/ activity. Therefore, a project specific and practical Environmental and Social Management Plan (ESMP) will be developed by Environmental Assessment Practitioner after the consultation and public participation process. The objective of the ESMP will be to ensure compliance with the EMA No. 7 of 2007, AfDB Environmental and Social Safeguards, Equator Principles, the IFC Performance Standards on Environmental and Social Sustainability.

To ensure that the ESMP is effectively implemented and full compliance of the ESMP, an Environmental Control and Monitoring (ECM) will also be developed

ENVIRONMENTAL AND SOCIAL IMPACT ASSESSMENT (ESIA) FOR THE PROPOSED CONSTRUCTION AND OPERATION OF AN 8KM ACCESS GRAVEL ROAD FROM MR124 (C34) OKATUMBA TO OTUANI VILLAGE (8KM), KUNENE REGION, NAMIBIA.

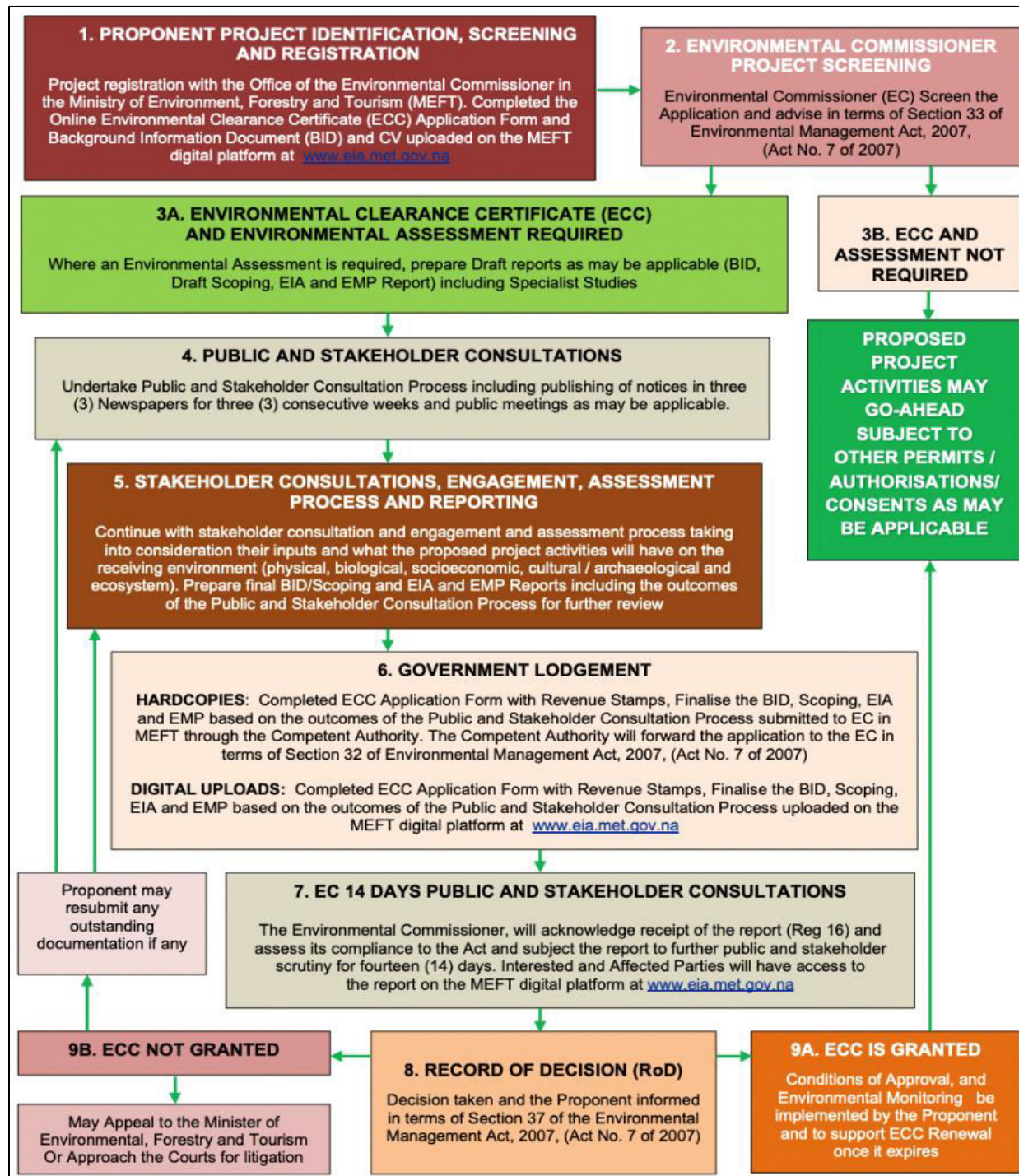
[BID: ESIA Study](#)

The final ESR/ESIA Report, ESMP and specialist assessment reports (if any) will be submitted to the Environmental Commissioner at the Ministry of Environment, Forestry & Tourism (MEFT). The process of the ESIA process (or simply EIA process in Namibia) is presented in **Figure overleaf**.

ENVIRONMENTAL AND SOCIAL IMPACT ASSESSMENT (ESIA) FOR THE PROPOSED CONSTRUCTION AND OPERATION OF AN 8KM ACCESS GRAVEL ROAD FROM MR124 (C34) OKATUMBA TO OTUANI VILLAGE (8KM), KUNENE REGION, NAMIBIA.

[BID: ESIA Study](#)

Figure 2: The EIA Process in Namibia to be followed for the project ESIA Study



ENVIRONMENTAL AND SOCIAL IMPACT ASSESSMENT (ESIA) FOR THE PROPOSED CONSTRUCTION AND OPERATION OF AN 8KM ACCESS GRAVEL ROAD FROM MR124 (C34) OKATUMBA TO OTUANI VILLAGE (8KM), KUNENE REGION, NAMIBIA.

[BID: ESIA Study](#)

5.3 Mode of Communication for Participation and Submitting Comments

Should you wish to send us your inputs, concerns and/or comments to be considered in the ESIA Report, please send them to EnviroPlan Consulting in writing **on or before the 30th of March 2025** using the contact details below?

Contact:

Enviroplan Consulting

Phone: +264 814 087 482

Email: info@enviroplanconsult.com/ talent@enviroplanconsult.com

SHASHI CONSULTING ENGINEERS CC

Address: PO Box 24285

Windhoek, Namibia

Tel: +264 81 326 6554

e-mail: shashi.consult@gmail.com/ shalishikongo@gmail.com

Shafudah’s Daunting Finance Task ...

Continued From Pg 2

Shafudah's task is now to contain the growing debts and avoid year fiscal slippery of the government. A task that has become difficult with various social-oriented parliamentarians.

SOE AND PUBLIC PROJECT FINANCING

One of the most difficult tasks highlighted by those with the know-how of the Finance Minister challenges is the constant bailout of SOEs and their constant losses burdening taxpayers.

Most of the SOEs barely produce financial reports and if they do they produce them late, with no public repercussion has been ben by previous treasurer. Shafudah now faces a task to convince his fellow Cabinet members to continue recapitalizing commercial SOEs and make them accountable.

The president has declared that the agricultural sector will get priority during her tenure, this could also mean the revival of various green schemes and the development of green field projects. This will command more money, which Shafudah has to balance.

Unless the government offers them to the private sector, regardless government will be required to improve some of the infrastructure given the dilapidated and outdated infrastructures at some green scheme.

BANKING CHARGES

The banking sector has been quite a sensitive sector under the Central Bank, however, calls have been now loud regarding the charges. Shafudah will also be the policymaker expected to answer the public call together with the central bank. Facing the the daunting task of determining the cost of offering banking services, the innovation it comes with, and ensuring the public afford such services.

LOCAL PROCUREMENT

Shafudah will also face domestic pressure for the country's procurement process which has seen many foreign-owned companies taking bigger capital projects from various SOEs.

The Public Procurement Act is implemented through her Ministry. Furthermore, those on the north of the Red Line are also calling for the implementation of the government directive for public entities on the north of the Red Line to procure meat (beef and chicken), eggs, and fresh produce from there.

Her two predecessors did not implement it fully despite all of them issuing new directives.

Another task for Shafudah is the implementation of a Code of Conduct that enables the empowerment of SMEs and

previously disadvantaged Namibians, the document has been talked about since its approval.

AGING OUTDATED INFRASTRUCTURE

Namibia is praised for its road infrastructures, however, other infrastructures are yet to catch up with the population and the country's economic aspirations. The current heavy rain has revealed a challenging picture of the country's infrastructure, as various bridges collapse, roadblocks, etc.

At the same time, the country's digital gap widens, with more ICT infrastructure needed. The AfCFTA is also demanding more connectivity through railway and other infrastructure.

The renewable energy sector electricity supply has also a huge deficit of transmission network to enable evacuation of power from sources and distribution.

The country has been cutting its capital budget however, the infrastructure backlog is growing, which Shafudah has now to pay attention to parallel to social issues.

QUALIFIED AUDIT OPINION AND ACCOUNTABILITY

Every financial year, the Auditor General releases or produces qualified audit opinions for various government offices, local authorities, and others. However, the government in the next year will still allocate money to the same institutions despite accountability and financial transparency.

Shafudah has now the task of bringing financial accountability within OMAs and ensuring tax money is accounted for.

TAX INCENTIVES

Manufacturing tax incentives have been revoked some years ago, and EPZ has been scrapped. It has been noted that the country's private sector competitiveness can be enhanced through fiscal moves such as incentives and tax breaks.

Since the manufacturing sector tax incentives and the skewed EPZ have been revoked the private sector has been waiting for the new regime that can enhance their competitive advantage, especially with the AfCFTA.

Shafudah is now tasked with ensuring the touted Special Economic Zone Policy that will offer various incentives come to life with some fiscal breathers for the private sector.

The tasks awaiting Shafudaha are mounting in terms of achieving a sustainable tax regime that will encourage reinvestment, aggregate demand, and tax avoidance.

erastus@thevillager.com.na

ENVIRONMENTAL IMPACT ASSESSMENT (EIA) FOR THE PROPOSED 8KM ACCESS GRAVEL ROAD OFF MR 124 (C34) ROAD OKATUMBA TO OTUANI VILLAGE, KUNENE REGION, NAMIBIA.

EnviroPlan Consulting cc hereby gives notice to all potential Interested and Affected Parties (I&APs), that an application for Environmental Clearance Certificate will be made to the Environmental Commissioner in terms of the Environmental Management Act (No. 7 of 2007) as follows;

Proponent: Ministry of Works and Transport

Environmental Assessment Practitioner:
EnviroPlan Consulting cc

Project Description: Ministry of Works and Transport hereby referred to as the project proponent intends to establish an 8 km access gravel road off C34 road Okatumba to Otuari village, Kunene Region, Namibia. The proposed access road came into consideration after the Kunene regional council raised concerns over the accessibility to newly established Rural constituency office, Otuari Clinic and Primary school. These amenities offer a very vital social and economic benefits to the community and the region at large. With the increase in lucrative business opportunities in the region, Otuari remains centralised to mining, tourism activities and administrative services.

Project Location: Off C34 road Okatumba to Otuari Village, Kunene Region, Namibia. Otuari village is located approximately 60km from Opuwo along the C43 road to Seisfontein. The proposed 8km access gravel road coordinates are as follows:

Point number	Latitude	Longitude
Starting point- Point 1	-18, 57291	-13,72089
Point 2 - Proposed route	-18, 57304	- 13, 71242
Point 3 - Alternative route	-18, 57091	-13, 71168
Point 4 - Alternative and proposed meet with existing track road	-18, 57332	-13, 70496
Point 5 – Access to shopping Centre	-18, 56688	-13, 67833
Point 6 – Opuwo rural constituency offices	-18, 56359	-13, 67582
Point 7 – Primary school	-18, 56309	-13 67851
Point 8 – Clinic	-18, 56179	-13, 67921

Public participation process: Interested and Affected Parties are hereby notified that public consultations are ongoing and a meeting will be held on the 29th March 2025 at the Rural constituency offices in Otuari village.

DATE AND TIME	ACTIVITY	VENUE - VILLAGE
29.03.25, 10:00 AM– 12:00 PM	CONSULTATIVE MEETING	OTUANI RURAL CONSTITUENCY OFFICES

The participation and commenting period are effective until 30 MARCH 2025.

To register or request for documents submit your details in writing to the Environmental Consultant and contact details given;

EnviroPlan Consulting
Environmental Consultant
Contact person: Talent Nyungu
Phone: +264 814 087482
info@enviroplanconsult.com

CLASSIFIEDS

To place a classifieds advert with us, please contact Ms. Fransina Fredericks
■ T: +264 (61) 246 136 E: fransina@confidentenamibia.com C: +264 81 231 7332

PUBLIC NOTICE

ENVIRONMENTAL IMPACT ASSESSMENT (EIA) FOR THE PROPOSED 8KM ACCESS GRAVEL ROAD OFF MR 124 (C34) ROAD OKATUMBA TO OTUANI VILLAGE, KUNENE REGION, NAMIBIA.

EnviroPlan Consulting cc hereby gives notice to all potential Interested and Affected Parties (I&APs), that an application for Environmental Clearance Certificate will be made to the Environmental Commissioner in terms of the Environmental Management Act (No. 7 of 2007) as follows;

Proponent:Ministry of Works and Transport

Environmental Assessment Practitioner: EnviroPlan Consulting cc

Project Description: Ministry of Works and Transport hereby referred to as the project proponent intends to establish an 8 km access gravel road off C34 road Okatumba to Otuari village, Kunene Region, Namibia. The proposed access road came into consideration after the Kunene regional council raised concerns over the accessibility to newly established Rural constituency office, Otuari Clinic and Primary school. These amenities offer a very vital social and economic benefits to the community and the region at large. With the increase in lucrative business opportunities in the region, Otuari remains centralised to mining, tourism activities and administrative services.

Project Location: Off C34 road Okatumba to Otuari Village, Kunene Region, Namibia. Otuari village is located approximately 60km from Opuwo along the C43 road to Seisfontein. The proposed 8km access gravel road coordinates are as follows:

Point number	Latitude	Longitude
Starting point-Point 1	-18, 57291	-13,72089
Point 2 - Proposed route	-18, 57304	- 13, 71242
Point 3 - Alternative route	-18, 57091	-13, 71168
Point 4 - Alternative and proposed meet with existing track road	-18, 57332	-13, 70496
Point 5 – Access to shopping Centre	-18, 56688	-13, 67833
Point 6 – Opuwo rural constituency offices	-18, 56359	-13, 67582
Point 7 – Primary school	-18, 56309	-13 67851
Point 8 – Clinic	-18, 56179	-13, 67921

Public participation process: Interested and Affected Parties are hereby notified that public consultations are ongoing and a meeting will be held on the 29th March 2025 at the Rural constituency offices in Otuari village

DATE AND TIME	ACTIVITY	VENUE - VILLAGE
29.03.25, 10:00 AM– 12:00 PM	CONSULTATIVE MEETING	OTUANI RURAL CONSTITUENCY OFFICES

The participation and commenting period are effective until 30 MARCH 2025.

To register or request for documents submit your details in writing to the Environmental Consultant and contact details given;

EnviroPlan Consulting
Environmental Consultant
Contact person: Talent Nyungu
Phone: +264 814 087482

info@enviroplanconsult.com

PUBLIC NOTICE

PUBLIC NOTICE: EIA FOR THE PROPOSED EXPLORATION ACTIVITIES ON EPL NO: 10141 OKAHANDJA, OTJOZONDJUPA REGION.

In accordance with the Environmental Management Act no. 7 of 2007 and its 2012 EIA regulations, the proposed exploration activities on EPL no 10141 require an Environmental Clearance Certificate before commencement.

The proponent, **Ludi Namibia Mining and Investment (PTY) LTD.** is proposing to conduct exploration activities on EPL no: 10141 in Okahandja district, Otjozondjupa region.

Consultant: Kalahari Geological and Environmental Solutions

Members of the public are invited to register as I&AP's for comments/inputs in order to receive further information on the EIA process on, and before the 28TH of March 2025 at kalaharigeoen-viro@gmail.com

For more information please contact:
Mr Joseph Kawina
Mobile: +264 813597277



PUBLIC NOTICE

NOTICE OF APPLICATION FOR AMENDMENT OF CONDITION AND CHANGE OF BUSINESS NAME UNDER THE LIQUOR ACT, 1998 (REGULATIONS 14, 26,27, 33&35)

Notice is hereby given that an application in terms of the Liquor Act, 1998, particulars of which appear below, will be made to the Regional Liquor Licensing Committee, Omusati Region.

1. Name and Postal Address of Applicant: Philip Ajueshi, Private Bag 2024, Ondangwa.
2. Current Business Name and Proposed Amendment: The current name Go Big Investment, under which two Special Liquor Licenses are registered, is being amended to Go Big Entertainment, with differentiation maintained between the Bar and the Night Club sections.
3. Address / Location of Premises: Erf 2646, Onhimbu East, Outapi, Omusati Region, Republic of Namibia.
4. Nature and Details of Application: - Day Bar Lounge (Current Operating Hours: 10h00 – 02h00) → Name Change to Go Big Entertainment Bar (Operating Hours to remain the same: 10h00 – 02h00). - Night Club (Current Operating Hours: 22h00 – 05h00) → Name Change to Go Big Entertainment Night Club (Requesting amendment of condition to new operating hours: 18h00 – 06h00 daily).
5. Clerk of the Court with Whom Application Will Be Lodged: Outapi Magistrate's Court.
- 6.Date on Which Application Will Be Lodged: *[Between 20 March– 01 April 2025.*
7. *Date of Meeting of Committee at Which Application Will Be Heard:*
- *07 June -14 July 2025(subject to change)*

Any objection or written submission in terms of *Section 28 of the Act* in relation to this application must be sent or delivered to the *Secretary of the Committee* to reach the Secretary not less than *21 days before* the date of the Committee meeting at which the application will be heard.

PUBLIC NOTICE

CALL FOR REGISTRATION AS INTERESTED AND AFFECTED PARTIES

ENVIRONMENTAL ASSESSMENT FOR AN APPLICATION FOR ENVIRONMENTAL CLEARANCE FOR THE PROPOSED 20 MW PV SOLAR PARK (40 HA) AND THE ASSOCIATED 30 KM LONG 66 KV POWERLINE OSHIKOTO REGION

1. PROJECT SITE AND DESCRIPTION

Masaus Investment cc (the Proponent), intends to apply to obtain an Environmental Clearance Certificate proposed The Proposed Establishment and Operation of a 20 MW PV Solar Park (40 Ha) on Farm Massaus No. 865 and the Associated 30 km long 66 kV Powerline (from the plant to the Oshikoto Substation in Tsumeb), Oshikoto Region. The key component of the proposed activity entails the fencing off, construction of the proposed plant, and operations thereof i.e. energy generation and transmission into the national grid via the Gibeon Substation.
2. PUBLIC PARTICIPATION PROCESS

Enviro-Leap Consulting invites all Interested and Affected Party (I & AP) to register and receive Environmental Assessment (BID, Scoping and EMP) documents relating to the proposed project for their comments and input.
3. COMMENTS AND QUERIES

Interested and Affected Parties are herewith request to register by writing to us at the address below no later than 18 April 2025.

Please register and direct all comments, queries to: **Environmental Assessment Practitioner**
Email: eap.trigen@gmail.com



PUBLIC NOTICE

CALL FOR REGISTRATION AS INTERESTED AND AFFECTED PARTIES

ENVIRONMENTAL ASSESSMENT FOR AN APPLICATION FOR ENVIRONMENTAL CLEARANCE FOR MINERAL EXPLORATION AND SMALL-SCALE MINING ON MINING CLAIMS 71767, ERONGO REGION

1. PROJECT SITE AND DESCRIPTION

Mr. Ipaheua Muhenje (the Proponent), intends to apply to obtain an Environmental Clearance Certificate proposed Base and Rare Metals (Copper) mineral right on Mining Claim 71767 totalling an area of 17.7 Hectares. The Mining claims are situated near Omao Village, Opuwo District of the Kunene Region. The key component of the proposed activity entails mining of Marble and continued exploration activities. Access to the sites will be by existing tracks and on foot where vehicle access is limited.
2. PUBLIC PARTICIPATION PROCESS

Enviro-Leap Consulting invites all Interested and Affected Party (I & AP) to register and receive Environmental Assessment (BID, Scoping and EMP) documents relating to the proposed project for their comments and input.
3. COMMENTS AND QUERIES

Interested and Affected Parties are herewith request to register by writing to us at the address below no later than 18 April 2025.

Please register and direct all comments, queries to: **Environmental Assessment Practitioner Email: eap.trigen@gmail.com**



PUBLIC NOTICE

ENVIRONMENTAL IMPACT ASSESSMENT PROPOSED SAND MINING (GRAVEL), OHAMEVA VILLAGE, OKONGO CONSTITUENCY, OHANGWENA REGION & INVITATION TO A PUBLIC MEETING

Tortoise Environmental Consultants (TEC) hereby notifies all Interested and Affected Parties (I&APs) that an application for an Environmental Clearance Certificate will be submitted to the Environmental Commissioner, in accordance with the provisions of the Environmental Management Act (No. 7 of 2007) and EIA Regulations (GN 30 of 2012) as follows:

Proponent: Napunikwa Investment CC

Project Location: Ohameva, Okongo Constituency

Public meeting venue: Ohameva village Headman's house

Date: 22nd March 2025

Time: 12H00 pm – 14H00 pm

Deadline for Comments: 9th April 2025
Register as I&Aps @:
Email: info@tec.com.na,
Postal Address: P.O. Box 35473,
Cell phone: +264811220114 or +264814077616

Tortoise Environmental Consultants(TEC)



ENVIRONMENTAL CLEARANCE NOTICE

Public Participation Notice in terms of Regulation No. 29, Section 21 under

Report Title: Environmental Impact Assessment (EIA) for Prospecting Activities under Exclusive Prospecting Licence (EPL) 10173, Opuwo Magisterial District, Kunene Region, Namibia

Project Location: EPL 10173, Kunene Region, Opuwo Magisterial District, near the southwestern border of Angola, **Coordinates:** 17°07'32.28" S, 13°15'44.55" E
Proponent: Frampton Investment CC
EAP: Erongo Consulting Group (Pty) Ltd
Competent Authority: Ministry of Mines & Energy (MME)
Reviewer: Ministry of Environment, Forestry & Tourism (MEFT)
Local Authority: Opuwo Town Council, Kunene Region, Namibia

The EIA for EPL 10173 in the Opuwo Magisterial District will assess environmental and social impacts, including land disturbance, water resources, biodiversity, air quality, noise, and socio-economic factors. Mitigation measures will ensure sustainable exploration while protecting the environment and communities. Interested and Affected Parties (I&APs) are invited to participate. Submit comments by 25 March 2025. A public meeting will be held if there is interest.

Contact Information:
• **Tel / WhatsApp:** +264 (0) 81 878 66 76
• **Email:** info@erongoconsultinggroup.co.za / erongoconsulting@gmail.com

How to Participate:
• **Register as an I&AP:** To receive project updates and documents, including the Draft EIA/ Scoping Report and Draft Environmental Management Plan (EMP), please contact Erongo Consulting Group using the details above.
• **Submit Comments:** Written comments can be submitted via email or post to the addresses provided.
• **Public Meetings:** Details of public meetings (if applicable) will be communicated to registered I&APs.

Note: All comments received during the commenting period will be reviewed and addressed in the final EIA report. Your participation is vital to ensuring that the project is conducted in an environmentally and socially responsible manner.



Environmental And Nature-Based Services | Management Consulting, ESG & Sustainability Advisory | Planning And Project Management | Health, Safety And Risk | Society And Social Value | Operations & Asset Management

CLASSIFIEDS

To place a classifieds advert with us, please contact Ms. Fransina Fredericks

■ T: +264 (61) 246 136 E: fransina@confidentenamibia.com C: +264 81 231 7332

PUBLIC NOTICE

ENVIRONMENTAL IMPACT ASSESSMENT (EIA) FOR THE PROPOSED 8KM ACCESS GRAVEL ROAD OFF MR 124 (C34) ROAD OKATUMBA TO OTUANI VILLAGE, KUNENE REGION, NAMIBIA.

EnviroPlan Consulting cc hereby gives notice to all potential Interested and Affected Parties (I&APs), that an application for Environmental Clearance Certificate will be made to the Environmental Commissioner in terms of the Environmental Management Act (No. 7 of 2007) as follows;

Proponent:Ministry of Works and Transport

Environmental Assessment Practitioner: EnviroPlan Consulting cc

Project Description: Ministry of Works and Transport hereby referred to as the project proponent intends to establish an 8 km access gravel road off C34 road Okatumba to Otuanu village, Kunene Region, Namibia. The proposed access road came into consideration after the Kunene regional council raised concerns over the accessibility to newly established Rural constituency office, Otuanu Clinic and Primary school. These amenities offer a very vital social and economic benefits to the community and the region at large. With the increase in lucrative business opportunities in the region, Otuanu remains centralised to mining, tourism activities and administrative services.

Project Location: Off C34 road Okatumba to Otuanu Village, Kunene Region, Namibia. Otuanu village is located approximately 60km from Opuwo along the C43 road to Seisfontein. The proposed 8km access gravel road coordinates are as follows:

Point number	Latitude	Longitude
Starting point-Point 1	-18, 57291	-13,72089
Point 2 - Proposed route	-18, 57304	- 13, 71242
Point 3 - Alternative route	-18, 57091	-13, 71168
Point 4 - Alternative and proposed meet with existing track road	-18, 57332	-13, 70496
Point 5 – Access to shopping Centre	-18, 56688	-13, 67833
Point 6 – Opuwo rural constituency offices	-18, 56359	-13, 67582
Point 7 – Primary school	-18, 56309	-13 67851
Point 8 – Clinic	-18, 56179	-13, 67921

Public participation process: Interested and Affected Parties are hereby notified that public consultations are ongoing and a meeting will be held on the 29th March 2025 at the Rural constituency offices in Otuanu village

DATE AND TIME	ACTIVITY	VENUE - VILLAGE
29.03.25, 10:00 AM– 12:00 PM	CONSULTATIVE MEETING	OTUANI RURAL CONSTITUENCY OFFICES

The participation and commenting period are effective until 30 MARCH 2025.

To register or request for documents submit your details in writing to the Environmental Consultant and contact details given;

EnviroPlan Consulting
Environmental Consultant
Contact person: Talent Nyungu
Phone: +264 814 087482

info@enviroplanconsult.com

PUBLIC NOTICE

SCOPING ENVIRONMENTAL IMPACT ASSESSMENT FOR THE PROPOSED MINERAL EXPLORATION ACTIVITIES ON MINING CLAIMS 75143-46 AND 75120-23, OMUSATI REGION

THE PROPONENT proposes to undertake exploration activities for Base and Rare Metals on Mining Claims (75554, 75553, 75552, 75551 and 75550) in Kunene region.

ENVIRONMENTAL COMPLIANCE: Before undertaking these activities, there is a need for compliance to requirements under the Environmental Management Act (No. 7 of 2007) and its EIA Regulations (GN. 4878 of 06 February 2012). For this reason, Consultants were appointed to support application for the Environmental Clearance Certificate (ECC).

PUBLIC NOTICE: This Public Notice is published in terms of Regulation 21(a) in the EIA Regulations.

INVITATION TO PARTICIPATE: Interested & Affected Parties (IAPs) are notified to register in order to receive information about this proposed project by contacting the below.

Lead Environmental Assessment Practitioner
Envirodu Consulting & Training Solutions cc
P. O. Box 4120, Swakopmund
Email: ecutsc@gmail.com or leadeap@ecutsnamibia.com
Website: www.ecutsnamibia.com



PUBLIC NOTICE

SCOPING ENVIRONMENTAL IMPACT ASSESSMENT FOR THE PROPOSED MINERAL EXPLORATION ACTIVITIES ON MINING CLAIMS 75554, 75553, 75552, 75551 AND 75550 AT FARM DORSLAAN 621 AND FARM KAMDESCHA 624, KHORIXAS, KUNENE REGION

KIRIN FRIENDSHIP INVESTMENTS cc proposes to undertake exploration activities for Base and Rare Metals on Mining Claims (75554, 75553, 75552, 75551 and 75550) in Kunene region.

ENVIRONMENTAL COMPLIANCE: Before undertaking these activities, there is a need for compliance to requirements under the Environmental Management Act (No. 7 of 2007) and its EIA Regulations (GN. 4878 of 06 February 2012). For this reason, Consultants were appointed to support application for the Environmental Clearance Certificate (ECC).

PUBLIC NOTICE: This Public Notice is published in terms of Regulation 21(a) in the EIA Regulations.

INVITATION TO PARTICIPATE: Interested & Affected Parties (IAPs) are notified to register in order to receive information about this proposed project by contacting the below.

Lead Environmental Assessment Practitioner
Envirodu Consulting & Training Solutions cc
P. O. Box 4120, Swakopmund
Email: ecutsc@gmail.com or leadeap@ecutsnamibia.com
Website: www.ecutsnamibia.com



PUBLIC NOTICE

CALL FOR REGISTARTION AS INTERESTED AND AFFECTED PARTIES

ENVIRONMENTAL ASSESSMENT FOR AN APPLICATION FOR ENVIRONMENTAL CLEARANCE FOR THE PROPOSED 20 MW PV SOLAR PARK (40 HA) AND THE ASSOCIATED 30 KM LONG 66 KV POWERLINE OSHIKOTO REGION

1. PROJECT SITE AND DESCRIPTION

Masaus Investment cc (the Proponent), intends to apply to obtain an Environmental Clearance Certificate proposed The Proposed Establishment and Operation of a 20 MW PV Solar Park (40 Ha) on Farm Massaus No. 865 and the Associated 30 km long 66 kV Powerline (from the plant to the Oshikoto Substation in Tsumeb), Oshikoto Region. The key component of the proposed activity entails the fencing off, construction of the proposed plant, and operations thereof i.e. energy generation and transmission into the national grid via the Gibeon Substation.

2. PUBLIC PARTICIPATION PROCESS

Enviro-Leap Consulting invites all Interested and Affected Party (I & AP) to register and receive Environmental Assessment (BID, Scoping and EMP) documents relating to the proposed project for their comments and input.

3. COMMENTS AND QUERIES

Interested and Affected Parties are herewith request to register by writing to us at the address below no later than 18 April 2025.

Please register and direct all comments, queries to: **Environmental Assessment Practitioner**
Email: eap.trigen@gmail.com



PUBLIC NOTICE

CALL FOR REGISTARTION AS INTERESTED AND AFFECTED PARTIES

ENVIRONMENTAL ASSESSMENT FOR AN APPLICATION FOR ENVIRONMENTAL CLEARANCE FOR MINERAL EXPLORATION AND SMALL-SCALE MINING ON MINING CLAIMS 71767, ERONGO REGION

1. PROJECT SITE AND DESCRIPTION

Mr. Ipaheua Muhenje (the Proponent), intends to apply to obtain an Environmental Clearance Certificate proposed Base and Rare Metals (Copper) mineral right on Mining Claim 71767 totalling an area of 17.7 Hectares. The Mining claims are situated near Omao Village, Opuwo District of the Kunene Region. The key component of the proposed activity entails mining of Marble and continued exploration activities. Access to the sites will be by existing tracks and on foot where vehicle access is limited.

2. PUBLIC PARTICIPATION PROCESS

Enviro-Leap Consulting invites all Interested and Affected Party (I & AP) to register and receive Environmental Assessment (BID, Scoping and EMP) documents relating to the proposed project for their comments and input.

3. COMMENTS AND QUERIES

Interested and Affected Parties are herewith request to register by writing to us at the address below no later than 18 April 2025.

Please register and direct all comments, queries to: **Environmental Assessment Practitioner Email:** eap.trigen@gmail.com



ENVIRONMENTAL CLEARANCE NOTICE

Public Participation Notice in terms of Regulation No. 29, Section 21 under the Environmental Management Act (Act No. 7 of 2007)

Project Activity / Project Name:
• Subdivision – Dividing Portion X from Farm Hentiesbaai Townlands No. 133, which is currently zoned "Undetermined".
• Rezoning – Changing the zoning of Portion X (1.47 hectares) from "Undetermined" to "Public & Private Parking Space".
• Consolidation – Merging Portion X (1.47 hectares) with an 8,000 square meter plot that has already been approved for the development of a boutique hotel.

REPORT TITLE:
EIA for Subdivision of Farm Hentiesbaai Townlands No. 133 Into Portion 144 And Remainder, Rezoning of Portion 144 (1.47 Hectares) From "Undetermined" To "Parking," And Consolidation of Portion 144 With Portion 132 Of Farm Hentiesbaai Townlands No. 133, Erongo Region

Project Location:
• Portion 144 of Farm Hentiesbaai Townlands No. 133, Erongo Region, Namibia.

Proponent: Continuum HB Property Investments (Pty) Ltd

EAP: Erongo Consulting Group (Pty) Ltd

Reviewer: Ministry of Environment, Forestry & Tourism (MEFT)

The EIA) for the boutique hotel development in Henties Bay will evaluate the environmental effects of the subdivision, rezoning, and consolidation of land. It will assess impacts on local ecosystems, water management, traffic, and the community. The EIA will also propose mitigation measures to minimize negative effects, ensuring sustainable development while protecting the environment.

We invite Interested and Affected Parties (I&APs) to join the public consultation process. Comments are welcome until 14th March, 2025. A public meeting will be held based on stakeholder interest.

Contact Information:
• Tel / WhatsApp: +264 (0) 81 878 66 76
• Email: info@erongoconsultinggroup.co.za

We value your input and look forward to your contributions to ensure high environmental standards and sustainability.



PUBLIC NOTICE

PUBLIC NOTICE: EIA FOR THE PRPOSED EXPLORATION ACTIVITIES ON EPL NO: 10141 OKAHANDJA, OTJOZONDJUPA REGION.

In accordance with the Environmental Management Act no. 7 of 2007 and its 2012 EIA regulations, the proposed exploration activities on EPL no 10141 require an Environmental Clearance Certificate before commencement.

The proponent, **Ludi Namibia Mining and Investment (PTY) LTD.** is proposing to conduct exploration activities on EPL no: 10141 in Okahandja district, Otjozondjupa region.

Consultant: Kalahari Geological and Environmental Solutions

Members of the public are invited to register as I&AP's for comments/inputs in order to receive further information on the EIA process on, and before the 28TH of March 2025 at kalaharigeoen-viro@gmail.com

For more information please contact:

Mr Joseph Kawina
Mobile: +264 813597277



PUBLIC NOTICE

ENVIRONMENTAL IMPACT ASSESSMENT PROPOSED SAND MINING (GRAVEL), OHAMEVA VILLAGE, OKONGO CONSTITUENCY, OHANGWENA REGION & INVITATION TO A PUBLIC MEETING

Tortoise Environmental Consultants (TEC) hereby notifies all Interested and Affected Parties (I&APs) that an application for an Environmental Clearance Certificate will be submitted to the Environmental Commissioner, in accordance with the provisions of the Environmental Management Act (No. 7 of 2007) and EIA Regulations (GN 30 of 2012) as follows:

Proponent: Napunikwa Investment CC

Project Location: Ohameva, Okongo Constituency

Public meeting venue: Ohameva village Headman's house

Date: 22nd March 2025

Time: 12H00 pm – 14H00 pm

Deadline for Comments: 9th April 2025

Register as I&Aps @:
Email: info@tec.com.na,

Postal Address: P.O. Box 35473,

Cell phone: +264811220114 or

+264814077616



ENVIRONMENTAL CLEARANCE NOTICE

Public Participation Notice in terms of Regulation No. 29, Section 21 under

Report Title: Environmental Impact Assessment (EIA) for Prospecting Activities under Exclusive Prospecting Licence (EPL) 10173, Opuwo Magisterial District, Kunene Region, Namibia

Project Location: EPL 10173, Kunene Region, Opuwo Magisterial District, near the southwestern border of Angola, Coordinates: 17°07'32.28" S, 13°15'44.55" E

Proponent: Frampton Investment CC
EAP: Erongo Consulting Group (Pty) Ltd
Competent Authority: Ministry of Mines & Energy (MME)

Reviewer: Ministry of Environment, Forestry & Tourism (MEFT)
Local Authority: Opuwo Town Council, Kunene Region, Namibia

The EIA for EPL 10173 in the Opuwo Magisterial District will assess environmental and social impacts, including land disturbance, water resources, biodiversity, air quality, noise, and socio-economic factors. Mitigation measures will ensure sustainable exploration while protecting the environment and communities.

Interested and Affected Parties (I&APs) are invited to participate. Submit comments by 25 March 2025. A public meeting will be held if there is interest.

Contact Information:

• **Tel / WhatsApp:** +264 (0) 81 878 66 76
• **Email:** info@erongoconsultinggroup.co.za / erongoconsulting@gmail.com

How to Participate:

• **Register as an I&AP:** To receive project updates and documents, including the Draft EIA/ Scoping Report and Draft Environmental Management Plan (EMP), please contact Erongo Consulting Group using the details above.

• **Submit Comments:** Written comments can be submitted via email or post to the addresses provided.

• **Public Meetings:** Details of public meetings (if applicable) will be communicated to registered I&APs.

Note: All comments received during the commenting period will be reviewed and addressed in the final EIA report. Your participation is vital to ensuring that the project is conducted in an environmentally and socially responsible manner.



Environmental And Nature-Based Services | Management Consulting, ESG & Sustainability Advisory | Planning And Project Management | Health, Safety And Risk | Society And Social Value | Operations & Asset Management

NSS Take Stock on Its Contribution to Research and Information Access

...As it Marked 100 Years

 David Shoombe

In marking its 100th anniversary the Namibia Scientific Society (NSS) said it has made progress in systematic scientific research, ensuring the availability of information and advising administrative bodies.

On Friday, the institution marked its 100th anniversary, and it reflected on its role in fostering academic collaboration and making research accessible to the public.

Speaking at the centenary celebration, the society's chairman, Professor Michael Backes, emphasised the progress made in scientific research and knowledge dissemination.

He noted that apart from publishing scientific literature, the society had also contributed to national development by making the Namibian Constitution available in multiple languages.

Established in 1925, the Namibia Scientific Society was the first institution in the country to promote research, connecting local and international scholars with Namibian institutions to advance projects in science, culture, development, and the arts. Over the years,

it has played a key role in facilitating research across various disciplines.

Its Chief Executive Officer, Ruth Moldzio, highlighted the institution's ongoing efforts to foster collaboration and increase public engagement with its resources.

She acknowledged past perceptions of exclusivity, stating that while the society had always been open to the public, there was now a renewed effort to make its facilities,

including its library and public lecture hall, more accessible. Meanwhile, John Wilbard, an information practitioner at NSS, outlined the institution's contributions to emerging sectors such as oil, gas, and green hydrogen. He noted that the society had facilitated public lectures and publications in these fields, providing valuable insights for students, researchers, and policymakers.

"The students and researchers interested in scientific research, culture, indigenous medicine, geography, and history always find support through our materials.

We are the custodians of rich historic and academic resources," Wilbard said.

The society's recent push for greater accessibility has been welcomed by researchers like Nangolo Peter, a postgraduate student in public health at Stellenbosch University.

"I always thought it was just a German think tank, but now I am happy to see it opening up," he said.

However, concerns remain about the lack of public awareness regarding the institution's role in Namibian academia.

"One hundred years is a long time. All Namibians should have known about this institution even before universities and colleges," Peter added.

Looking ahead, researchers are calling on the NSS to expand its assistance to critical areas such as medical research, unemployment, and skills development to address the country's pressing challenges.

ENVIRONMENTAL IMPACT ASSESSMENT (EIA) FOR THE PROPOSED 8KM ACCESS GRAVEL ROAD OFF MR 124 (C34) ROAD OKATUMBA TO OTUANI VILLAGE, KUNENE REGION, NAMIBIA.

EnviroPlan Consulting cc hereby gives notice to all potential Interested and Affected Parties (I&APs), that an application for Environmental Clearance Certificate will be made to the Environmental Commissioner in terms of the Environmental Management Act (No. 7 of 2007) as follows;

Proponent: Ministry of Works and Transport

Environmental Assessment Practitioner:
EnviroPlan Consulting cc

Project Description: Ministry of Works and Transport hereby referred to as the project proponent intends to establish an 8 km access gravel road off C34 road Okatumba to Otuanu village, Kunene Region, Namibia. The proposed access road came into consideration after the Kunene regional council raised concerns over the accessibility to newly established Rural constituency office, Otuanu Clinic and Primary school. These amenities offer a very vital social and economic benefits to the community and the region at large. With the increase in lucrative business opportunities in the region, Otuanu remains centralised to mining, tourism activities and administrative services.

Project Location: Off C34 road Okatumba to Otuanu Village, Kunene Region, Namibia. Otuanu village is located approximately 60km from Opuwo along the C43 road to Seisfontein. The proposed 8km access gravel road coordinates are as follows:

Point number	Latitude	Longitude
Starting point- Point 1	-18, 57291	-13,72089
Point 2 - Proposed route	-18, 57304	-13, 71242
Point 3 - Alternative route	-18, 57091	-13, 71168
Point 4 - Alternative and proposed meet with existing track road	-18, 57332	-13, 70496
Point 5 - Access to shopping Centre	-18, 56688	-13, 67833
Point 6 - Opuwo rural constituency offices	-18, 56359	-13, 67582
Point 7 - Primary school	-18, 56309	-13, 67851
Point 8 - Clinic	-18, 56179	-13, 67921

Public participation process: Interested and Affected Parties are hereby notified that public consultations are ongoing and a meeting will be held on the 29th March 2025 at the Rural constituency offices in Otuanu village.

DATE AND TIME	ACTIVITY	VENUE - VILLAGE
29.03.25, 10:00 AM- 12:00 PM	CONSULTATIVE MEETING	OTUANI RURAL CONSTITUENCY OFFICES

The participation and commenting period are effective until 30 MARCH 2025.

To register or request for documents submit your details in writing to the Environmental Consultant and contact details given;

EnviroPlan Consulting
Environmental Consultant
Contact person: Talent Nyungu
Phone: +264 814 087482
info@enviroplanconsult.com



ENVIRONMENTAL IMPACT ASSESSMENT (EIA) FOR THE PROPOSED 8KM ACCESS GRAVEL
ROAD OFF MR 124 (C34) ROAD OKATUMBA TO OTUANI VILLAGE, KUNENE REGION, NAMIBIA

NAME	VILLAGE/ ORGANISATION	CELLPHONE NUMBER
TAZENI NYUNGU	ENVIROPLAN	0814087482
WESTERN MUHARUKUA	REGIONAL COUNCIL	0812750156
KOUJEE MUHENJE	Ondera	0813920808
Herijama Musaso	Obuani	0817575919
KAPATO Tj. Ndyumbo	Obuani	0817898850
Ukwaaberwaie mupia	Obuani	0813920808
Zoenene Musaso	Oyikongo	0817470162
SIMSON KAPEKE	Ondera	0816989731
KAZWIRE TIIPESCE	ONGANGO	0812527206
SAN EKEE KAKUWA	Obuani	08185236804
Tscholanomond Jigobompa	Ongoripo	0815556484
VAKATUPAPI	ONGANGO	081-4041315
UATAARA	OTUANI	0813303513
TIIPESCE	OKATUMBA	08144431392
MUSASO	ONGANGO	0814647731
MUSASO	OTUANI	N/A
VIRERE	OKATUMBA	0814540643

ENVIRONMENTAL IMPACT ASSESSMENT (EIA) FOR THE PROPOSED 8KM ACCESS GRAVEL ROAD OFF MR 124 (C34) ROAD OKATUMBA TO OTUANI VILLAGE, KUNENE REGION, NAMIBIA

NAME	VILLAGE/ ORGANISATION	CELLPHONE NUMBER
Diimbi	Okatumba	0818524311
Joosi	Otuani	0817133294
Jatungwa	Otuani	08174630401
Jizoviro	Otuani	0816430401
Uripap	Okatumba	0813970808
Uwotumba MATJENE	Otuani	0816990000
Samingo	Otuani	N/A
Mr. Umtara	Otuani	081717862
Kamujizeure	Otuani	08171470675
Vatupambango Mbunduha	Otuani	0817575471
Umdari T. Yemula	Ongango	0818241240
Jindjumba T. Grace	Otuani	0814197575
Jahau Kapi	Otuani	0815556072
Kajizupopezu Muhenje	Otuani	N/A
Hijakofa Ngunahe	Otuani	N/A
Mungurua Nkere	Otuani	
Natapuratunga Muhene	Otuani	0814113675

ENVIRONMENTAL IMPACT ASSESSMENT (EIA) FOR THE PROPOSED 8KM ACCESS GRAVEL

ROAD OFF MR 124 (C34) ROAD OKATUMBA TO OTUANI VILLAGE, KUNENE REGION, NAMIBIA

NAME	VILLAGE/ ORGANISATION	CELLPHONE NUMBER
VIRERE DONALD.K.	OTUANI	0815567606
JENSJUMBA JARERHUA	OTUANI	N/A
RUKOMO KARINDI	OTUANI	0817228821
KARINDI MUMENGE	OTUANI	0813407036
KARINDI TIPASA	Epungwe	0813995817
VAPAKESONA TIBURI	OTUANI	N/A
VANUTATAMISA JIANDINE	OTUANI	0816204661
NORPEBUE GIINDUMBA	OTUANI	0816528999
NGAYEROROKI JIAMBWA	OTUANI	0816720760
SHADAN P. JIINDUMBA	OTUANI	0818434259
MANARIRALIC JIUMBWA	OTUANI	0812736314
KUUTEREROKI KUTUBA	OTUANI	0812273775
UAVANGAMUNO NGUNAIHE	OTUANI	081 N/A
KAVENDJIMUNU MUSASO	OTUANI	N/A
DIANA JIREISO	OTUANI	0814579235
MAKETA MUSASO	OTUANI	0816691078
KAVETJANGEQUE MUSASO	OTUANI	N/A
JIUMBWA MOZEMANOMEXA	OTUANI	N/A
JIUMBWA	Jiumbwa	Jiumbwa

1. Kaongeka	Tjuma	Otuani	0815925891
2. Ngantjirue	Mbunguha	Otuani	081 65 70 340
3. Muettemuine	Virere	Otuani	081 88 07 065
4. Biana	Mburura	Otuani	081 31 52 361
5. Umuuapi	Musaso	Otuani	081 60 91 388
6. Itenga	Tjumbua	Otuani	N/A
7. Kae			
8. Kasirua	Uakapungah	Okakwara	081 49 58 915
9. Ijituapi	Kaveza	Umuine	081 76 21 134
10. Amos R.U	Virere	Otuani	081 73 61 253
11. Mbumbuni	Kavari	Otuani	081 32 52 424
12. Rakohola	Kutufa	Otuani	
	Mbunguha	Otuani	081 82 15 624
13. Hivara	Tjimuine	Otuani	081 22 64 504
14. Kavari	Kavazuvuana	Otuani	081 46 46 077
15. NBERUBA	Uvetera	Otuani	081 55 53 962



REGISTRATION AND COMMENTS FORM

ENVIRONMENTAL IMPACT ASSESSMENT (EIA) FOR THE PROPOSED 8KM ACCESS GRAVEL ROAD OFF MR 124 (C34) ROAD OKATUMBA TO OTUANI VILLAGE, KUNENE REGION, NAMIBIA

Kindly complete this Form in Detail and return to:

EnviroPlan Consulting

Phone: +264 814 087 482

Email: info@enviroplanconsult.com

PERSONAL DETAILS

Name & Surname: UNRARU O.

Postal Address: P/BAG 3027 Opuru Email: obedundaru@gmail.com

Village Name: OTUANI Cellphone No: 0818777862

Does the proposed project affect you in any way?

YES

☒ NO

Do you have any points of concern or support regarding the proposed projects? If "yes", please briefly list these in point format:

☒ YES

☐ NO

I AM SUPPORTING
THE PROJECT TO TAKE PLACE
VERY SOON AS IT WILL HELP WHOLE
COMMUNITY WITH POSSIBLE MOVEMENT
TO ALL GOVERNMENTAL INSTITUTIONS.

Do you wish this project to proceed?

☒ YES

☐ NO

SIGNATURE:

REGISTRATION AND COMMENTS FORM

ENVIRONMENTAL IMPACT ASSESSMENT (EIA) FOR THE PROPOSED 8KM ACCESS GRAVEL ROAD OFF MR 124 (C34) ROAD OKATUMBA TO OTUANI VILLAGE, KUNENE REGION, NAMIBIA

Kindly complete this Form in Detail and return to:

EnviroPlan Consulting

Phone: +264 814 087 482

Email: info@enviroplanconsult.com

PERSONAL DETAILS

Name & Surname: Kaongelwa Tjuma

Postal Address: Obuani Email: N/A

Village Name: Obuani Cellphone No: 0816748510

Does the proposed project affect you in any way?

YES

NO ☒

in good way because the project is helping community in fantastic way.

Do you have any points of concern or support regarding the proposed projects? If "yes", please briefly list these in point format:

YES ☒

NO

1. stopa Ondopa
2. Road to be gravelled
3.

Do you wish this project to proceed?

YES ☒

NO

SIGNATURE: Kaongelwa

REGISTRATION AND COMMENTS FORM

ENVIRONMENTAL IMPACT ASSESSMENT (EIA) FOR THE PROPOSED 8KM ACCESS GRAVEL ROAD OFF MR 124 (C34) ROAD OKATUMBA TO OTUANI VILLAGE, KUNENE REGION, NAMIBIA

Kindly complete this Form in Detail and return to:

EnviroPlan Consulting

Phone: +264 814 087 482

Email: info@enviroplanconsult.com

PERSONAL DETAILS

Name & Surname: Muovemvina Virere

Postal Address: N/A Email: N/A

Village Name: Otvani Cellphone No: 081 880 765

Does the proposed project affect you in any way?

YES

NO ☒

in good way Because I want the road to be done

Do you have any points of concern or support regarding the proposed projects? If "yes", please briefly list these in point format:

YES ☒

NO

- (1) to Road to be gravelled
- (2) to clear level Road
- (3)

Do you wish this project to proceed?

YES ☒

NO

SIGNATURE:

M. Virere



REGISTRATION AND COMMENTS FORM

ENVIRONMENTAL IMPACT ASSESSMENT (EIA) FOR THE PROPOSED 8KM ACCESS GRAVEL ROAD OFF MR 124 (C34) ROAD OKATUMBA TO OTUANI VILLAGE, KUNENE REGION, NAMIBIA

Kindly complete this Form in Detail and return to:

EnviroPlan Consulting

Phone: +264 814 087 482

Email: info@enviroplanconsult.com

PERSONAL DETAILS

Name & Surname: Makariroise Jumbua

Postal Address: N/A Email:

Village Name: Okatumba Cellphone No: 0812756314

Does the proposed project affect you in any way?

YES

NO ☒

Do you have any points of concern or support regarding the proposed projects? If "yes", please briefly list these in point format:

YES

NO ☒

Do you wish this project to proceed?

YES ☒

NO

SIGNATURE: M. Jumbua



REGISTRATION AND COMMENTS FORM

ENVIRONMENTAL IMPACT ASSESSMENT (EIA) FOR THE PROPOSED 8KM ACCESS GRAVEL ROAD OFF MR 124 (C34) ROAD OKATUMBA TO OTUANI VILLAGE, KUNENE REGION, NAMIBIA

Kindly complete this Form in Detail and return to:

EnviroPlan Consulting

Phone: +264 814 087 482

Email: info@enviroplanconsult.com

PERSONAL DETAILS

Name & Surname: ITILYOMBO NGAYECORE

Postal Address: N/A Email:

Village Name: OTUANI Cellphone No: 081 6720760

Does the proposed project affect you in any way?

YES

NO ☒

Do you have any points of concern or support regarding the proposed projects? If "yes", please briefly list these in point format:

YES

NO ☒

Do you wish this project to proceed?

YES ☒

NO

SIGNATURE:

ITILYOMBO



REGISTRATION AND COMMENTS FORM

ENVIRONMENTAL IMPACT ASSESSMENT (EIA) FOR THE PROPOSED 8KM ACCESS GRAVEL ROAD OFF MR 124 (C34) ROAD OKATUMBA TO OTUANI VILLAGE, KUNENE REGION, NAMIBIA

Kindly complete this Form in Detail and return to:

EnviroPlan Consulting

Phone: +264 814 087 482

Email: info@enviroplanconsult.com

PERSONAL DETAILS

Name & Surname: Ukwapunguha / Kale

Postal Address: P.O. BOX 29 Otumbi, Okavango Email: _____

Village Name: Okavango Cellphone No: 0814958915/0813771314

Does the proposed project affect you in any way?

YES ☒

NO ☐

Do you have any points of concern or support regarding the proposed projects? If "yes", please briefly list these in point format:

YES ☐

NO ☒

Do you wish this project to proceed?

YES ☒

NO ☐

SIGNATURE: _____



REGISTRATION AND COMMENTS FORM

ENVIRONMENTAL IMPACT ASSESSMENT (EIA) FOR THE PROPOSED 8KM ACCESS GRAVEL ROAD OFF MR 124 (C34) ROAD OKATUMBA TO OTUANI VILLAGE, KUNENE REGION, NAMIBIA

Kindly complete this Form in Detail and return to:

EnviroPlan Consulting

Phone: +264 814 087 482

Email: info@enviroplanconsult.com

PERSONAL DETAILS

Name & Surname: Kasirua Kavetilyme

Postal Address: N/A Email: N/A

Village Name: Okatumba Cellphone No: 0817621134

Does the proposed project affect you in any way?

YES ☒

NO ☐

Do you have any points of concern or support regarding the proposed projects? If "yes", please briefly list these in point format:

YES ☐

NO ☒

Do you wish this project to proceed?

YES ☐

NO ☒

SIGNATURE: Kasirua Kavetilyme



REGISTRATION AND COMMENTS FORM

ENVIRONMENTAL IMPACT ASSESSMENT (EIA) FOR THE PROPOSED 8KM ACCESS GRAVEL ROAD OFF MR 124 (C34) ROAD OKATUMBA TO OTUANI VILLAGE, KUNENE REGION, NAMIBIA

Kindly complete this Form in Detail and return to:

EnviroPlan Consulting

Phone: +264 814 087 482

Email: info@enviroplanconsult.com

PERSONAL DETAILS

Name & Surname: VEKAHUPA NIPOSA

Postal Address: N/A Email: N/A

Village Name: OTUANI Cellphone No: 0813995812

Does the proposed project affect you in any way?

YES

☒ NO

Do you have any points of concern or support regarding the proposed projects? If "yes", please briefly list these in point format:

YES

☒ NO

Do you wish this project to proceed?

☒ YES

NO

SIGNATURE:

[Signature]

REGISTRATION AND COMMENTS FORM

ENVIRONMENTAL IMPACT ASSESSMENT (EIA) FOR THE PROPOSED 8KM ACCESS GRAVEL ROAD OFF MR 124 (C34) ROAD OKATUMBA TO OTUANI VILLAGE, KUNENE REGION, NAMIBIA

Kindly complete this Form in Detail and return to:

EnviroPlan Consulting

Phone: +264 814 087 482

Email: info@enviroplanconsult.com

PERSONAL DETAILS

Name & Surname: Unyapi MUSA

Postal Address: Otuan Email:

Village Name: Otuan Cellphone No: 0816091388

Does the proposed project affect you in any way?

YES ☒

NO ☐

Do you have any points of concern or support regarding the proposed projects? If "yes", please briefly list these in point format:

YES ☐

NO ☒

Do you wish this project to proceed?

YES ☒

NO ☐

SIGNATURE:

MUSA



REGISTRATION AND COMMENTS FORM

ENVIRONMENTAL IMPACT ASSESSMENT (EIA) FOR THE PROPOSED 8KM ACCESS GRAVEL ROAD OFF MR 124 (C34) ROAD OKATUMBA TO OTUANI VILLAGE, KUNENE REGION, NAMIBIA

Kindly complete this Form in Detail and return to:

EnviroPlan Consulting

Phone: +264 814 087 482

Email: info@enviroplanconsult.com

PERSONAL DETAILS

Name & Surname: MBUNGUHA NGARITJILIKUE

Postal Address: NA Email: NA

Village Name: OTUANI Cellphone No:

Does the proposed project affect you in any way?

YES

NO ☒

Do you have any points of concern or support regarding the proposed projects? If "yes", please briefly list these in point format:

YES

NO ☒

Do you wish this project to proceed?

YES ☒

NO

SIGNATURE:



REGISTRATION AND COMMENTS FORM

ENVIRONMENTAL IMPACT ASSESSMENT (EIA) FOR THE PROPOSED 8KM ACCESS GRAVEL ROAD OFF MR 124 (C34) ROAD OKATUMBA TO OTUANI VILLAGE, KUNENE REGION, NAMIBIA

Kindly complete this Form in Detail and return to:

EnviroPlan Consulting

Phone: +264 814 087 482

Email: info@enviroplanconsult.com

PERSONAL DETAILS

Name & Surname: DIANI MBURURA

Postal Address: N/A Email: N/A

Village Name: OTUANI Cellphone No: 0813152361

Does the proposed project affect you in any way?

YES

NO ☒

Do you have any points of concern or support regarding the proposed projects? If "yes", please briefly list these in point format:

YES

NO ☒

Do you wish this project to proceed?

YES ☒

NO

SIGNATURE:

[Signature]



REGISTRATION AND COMMENTS FORM

ENVIRONMENTAL IMPACT ASSESSMENT (EIA) FOR THE PROPOSED 8KM ACCESS GRAVEL ROAD OFF MR 124 (C34) ROAD OKATUMBA TO OTUANI VILLAGE, KUNENE REGION, NAMIBIA

Kindly complete this Form in Detail and return to:

EnviroPlan Consulting

Phone: +264 814 087 482

Email: info@enviroplanconsult.com

PERSONAL DETAILS

Name & Surname: KAPIRIMA MUSA

Postal Address: NA Email: NA

Village Name: OTUANI Cellphone No: NA

Does the proposed project affect you in any way?

YES

NO ☒

Do you have any points of concern or support regarding the proposed projects? If "yes", please briefly list these in point format:

YES

NO ☒

Do you wish this project to proceed?

YES ☒

NO

SIGNATURE:

MUSA



REGISTRATION AND COMMENTS FORM

ENVIRONMENTAL IMPACT ASSESSMENT (EIA) FOR THE PROPOSED 8KM ACCESS GRAVEL ROAD OFF MR 124 (C34) ROAD OKATUMBA TO OTUANI VILLAGE, KUNENE REGION, NAMIBIA

Kindly complete this Form in Detail and return to:

EnviroPlan Consulting

Phone: +264 814 087 482

Email: info@enviroplanconsult.com

PERSONAL DETAILS

Name & Surname: KAVENHJIMVU MUGISA

Postal Address: NA Email: NA

Village Name: Cellphone No: NA

Does the proposed project affect you in any way?

YES

NO ☒

Do you have any points of concern or support regarding the proposed projects? If "yes", please briefly list these in point format:

YES

NO ☒

Do you wish this project to proceed?

YES ☒

NO

SIGNATURE:

MUGISA



REGISTRATION AND COMMENTS FORM

ENVIRONMENTAL IMPACT ASSESSMENT (EIA) FOR THE PROPOSED 8KM ACCESS GRAVEL ROAD OFF MR 124 (C34) ROAD OKATUMBA TO OTUANI VILLAGE, KUNENE REGION, NAMIBIA

Kindly complete this Form in Detail and return to:

EnviroPlan Consulting

Phone: +264 814 087 482

Email: info@enviroplanconsult.com

PERSONAL DETAILS

Name & Surname: Mamagomwa Ngungube

Postal Address: NA Email: NA

Village Name: OTUANI Cellphone No: 0813916695

Does the proposed project affect you in any way?

YES

NO ☒

Do you have any points of concern or support regarding the proposed projects? If "yes", please briefly list these in point format:

YES

NO ☒

Do you wish this project to proceed?

YES ☒

NO

SIGNATURE:

Ngungube



REGISTRATION AND COMMENTS FORM

ENVIRONMENTAL IMPACT ASSESSMENT (EIA) FOR THE PROPOSED 8KM ACCESS GRAVEL ROAD OFF MR 124 (C34) ROAD OKATUMBA TO OTUANI VILLAGE, KUNENE REGION, NAMIBIA

Kindly complete this Form in Detail and return to:

EnviroPlan Consulting

Phone: +264 814 087 482

Email: info@enviroplanconsult.com

PERSONAL DETAILS

Name & Surname: Kuwendu Kuwaba

Postal Address: NA Email: NA

Village Name: OTUANI Cellphone No: 0812273775

Does the proposed project affect you in any way?

YES

NO ☒

Do you have any points of concern or support regarding the proposed projects? If "yes", please briefly list these in point format:

YES

NO ☒

Do you wish this project to proceed?

YES ☒

NO

SIGNATURE:



REGISTRATION AND COMMENTS FORM

ENVIRONMENTAL IMPACT ASSESSMENT (EIA) FOR THE PROPOSED 8KM ACCESS GRAVEL ROAD OFF MR 124 (C34) ROAD OKATUMBA TO OTUANI VILLAGE, KUNENE REGION, NAMIBIA

Kindly complete this Form in Detail and return to:

EnviroPlan Consulting

Phone: +264 814 087 482

Email: info@enviroplanconsult.com

PERSONAL DETAILS

Name & Surname: DJAN TIRAGO

Postal Address: NA Email: NA

Village Name: OTUANI Cellphone No: 0814579285

Does the proposed project affect you in any way?

YES

NO ☒

Do you have any points of concern or support regarding the proposed projects? If "yes", please briefly list these in point format:

YES

NO ☒

Do you wish this project to proceed?

YES ☒

NO

SIGNATURE:

Tirago



REGISTRATION AND COMMENTS FORM

ENVIRONMENTAL IMPACT ASSESSMENT (EIA) FOR THE PROPOSED 8KM ACCESS GRAVEL ROAD OFF MR 124 (C34) ROAD OKATUMBA TO OTUANI VILLAGE, KUNENE REGION, NAMIBIA

Kindly complete this Form in Detail and return to:

EnviroPlan Consulting

Phone: +264 814 087 482

Email: info@enviroplanconsult.com

PERSONAL DETAILS

Name & Surname: Parimuti Shabw Tjindumba

Postal Address: N/A Email:

Village Name: Otuani Cellphone No: 081 8636259

Does the proposed project affect you in any way?

YES

NO ☒

Do you have any points of concern or support regarding the proposed projects? If "yes", please briefly list these in point format:

YES

NO ☒

Do you wish this project to proceed?

YES ☒

NO

SIGNATURE:

Tjindumba



REGISTRATION AND COMMENTS FORM

ENVIRONMENTAL IMPACT ASSESSMENT (EIA) FOR THE PROPOSED 8KM ACCESS GRAVEL ROAD OFF MR 124 (C34) ROAD OKATUMBA TO OTUANI VILLAGE, KUNENE REGION, NAMIBIA

Kindly complete this Form in Detail and return to:

EnviroPlan Consulting

Phone: +264 814 087 482

Email: info@enviroplanconsult.com

PERSONAL DETAILS

Name & Surname: Kuzuma Muhenje

Postal Address: NA Email: NA

Village Name: OKATUMBA Cellphone No: NA

Does the proposed project affect you in any way?

YES

NO ☒

Do you have any points of concern or support regarding the proposed projects? If "yes", please briefly list these in point format:

YES

NO ☒

Do you wish this project to proceed?

YES ☒

NO

SIGNATURE:

[Signature]



REGISTRATION AND COMMENTS FORM

ENVIRONMENTAL IMPACT ASSESSMENT (EIA) FOR THE PROPOSED 8KM ACCESS GRAVEL ROAD OFF MR 124 (C34) ROAD OKATUMBA TO OTUANI VILLAGE, KUNENE REGION, NAMIBIA

Kindly complete this Form in Detail and return to:

EnviroPlan Consulting

Phone: +264 814 087 482

Email: info@enviroplanconsult.com

PERSONAL DETAILS

Name & Surname

Kamutjizevire hae

Postal Address

Otswana

Email

haeejoice@gmail.com

Village Name

Otswana N/A

Cellphone No

0817470675

Does the proposed project affect you in any way?

YES

NO ☒

Do you have any points of concern or support regarding the proposed projects? If "yes", please briefly list these in point format:

YES

NO ☒

Do you wish this project to proceed?

YES ☒

NO

SIGNATURE:



REGISTRATION AND COMMENTS FORM

ENVIRONMENTAL IMPACT ASSESSMENT (EIA) FOR THE PROPOSED 8KM ACCESS GRAVEL ROAD OFF MR 124 (C34) ROAD OKATUMBA TO OTUANI VILLAGE, KUNENE REGION, NAMIBIA

Kindly complete this Form in Detail and return to:

EnviroPlan Consulting

Phone: +264 814 087 482

Email: info@enviroplanconsult.com

PERSONAL DETAILS

Name & Surname: Romario Namaseb

Postal Address: N/A Email: Ronaldorromaseb350@gmail.com

Village Name: Otuani Cellphone No: 0817978780

Does the proposed project affect you in any way?

YES

NÓ ☒

Do you have any points of concern or support regarding the proposed projects? If "yes", please briefly list these in point format:

YES

NO ☒

Do you wish this project to proceed?

YES ☒

NO

SIGNATURE: [Signature]



REGISTRATION AND COMMENTS FORM

ENVIRONMENTAL IMPACT ASSESSMENT (EIA) FOR THE PROPOSED 8KM ACCESS GRAVEL ROAD OFF MR 124 (C3#) ROAD OKATUMBA TO OTUANI VILLAGE, KUNENE REGION, NAMIBIA

Kindly complete this Form in Detail and return to:

EnviroPlan Consulting

Phone: +264 814 087 482

Email: info@enviroplanconsult.com

PERSONAL DETAILS

Name & Surname: HEMUTANE UEMUTATUWISA

Postal Address: NA Email: NA

Village Name: OTUANI Cellphone No:

Does the proposed project affect you in any way?

YES

NO ☒

Do you have any points of concern or support regarding the proposed projects? If "yes", please briefly list these in point format:

YES

NO ☒

Do you wish this project to proceed?

YES ☒

NO

SIGNATURE:



REGISTRATION AND COMMENTS FORM

ENVIRONMENTAL IMPACT ASSESSMENT (EIA) FOR THE PROPOSED 8KM ACCESS GRAVEL ROAD OFF MR 124 (C34) ROAD OKATUMBA TO OTUANI VILLAGE, KUNENE REGION, NAMIBIA

Kindly complete this Form in Detail and return to:

EnviroPlan Consulting

Phone: +264 814 087 482

Email: info@enviroplanconsult.com

PERSONAL DETAILS

Name & Surname: ILANDJUMBA MATJARENE

Postal Address: P/BAY 3027 Email: Pelequnmat2019@gmail.com
OPUWO

Village Name: OTUANI Cellphone No: 0816990000

Does the proposed project affect you in any way?

YES

NO ☒

Do you have any points of concern or support regarding the proposed projects? If "yes", please briefly list these in point format:

YES ☒

NO

Do you wish this project to proceed?

YES ☒

NO

SIGNATURE:



REGISTRATION AND COMMENTS FORM

ENVIRONMENTAL IMPACT ASSESSMENT (EIA) FOR THE PROPOSED 8KM ACCESS GRAVEL ROAD OFF MR 124 (C30) ROAD OKATUMBA TO OTUANI VILLAGE, KUNENE REGION, NAMIBIA

Kindly complete this Form in Detail and return to:

EnviroPlan Consulting

Phone: +264 814 087 482

Email: info@enviroplanconsult.com

PERSONAL DETAILS

Name & Surname: Tjindjumba Grace

Postal Address: P/Bag 3027 Email: tjindjumba@gmail.com

Village Name: Otuani Cellphone No: 0814797575

Does the proposed project affect you in any way?

YES

NO ☒

Do you have any points of concern or support regarding the proposed projects? If "yes", please briefly list these in point format:

YES

NO ☒

Do you wish this project to proceed?

YES ☒

NO

SIGNATURE:

Tjindjumba Grace



REGISTRATION AND COMMENTS FORM

ENVIRONMENTAL IMPACT ASSESSMENT (EIA) FOR THE PROPOSED 8KM ACCESS GRAVEL ROAD OFF MR 124 (C34) ROAD OKATUMBA TO OTUANI VILLAGE, KUNENE REGION, NAMIBIA

Kindly complete this Form in Detail and return to:

EnviroPlan Consulting

Phone: +264 814 087 482

Email: info@enviroplanconsult.com

PERSONAL DETAILS

Name & Surname: MUSASO Jaketa

Postal Address: Email:

Village Name: OTUANI Cellphone No: 081 669 1678

Does the proposed project affect you in any way?

YES

NO ☒

Do you have any points of concern or support regarding the proposed projects? If "yes", please briefly list these in point format:

YES ☒

NO

Do you wish this project to proceed?

YES ☒

NO

SIGNATURE:

M. J.



REGISTRATION AND COMMENTS FORM

ENVIRONMENTAL IMPACT ASSESSMENT (EIA) FOR THE PROPOSED 8KM ACCESS GRAVEL ROAD OFF MR 124 (C34) ROAD OKATUMBA TO OTUANI VILLAGE, KUNENE REGION, NAMIBIA

Kindly complete this Form in Detail and return to:

EnviroPlan Consulting

Phone: +264 814 087 482

Email: info@enviroplanconsult.com

PERSONAL DETAILS

Name & Surname: VATE YAMBANGO MBUNGUHA

Postal Address: N/A Email: N/A

Village Name: Otuni Cellphone No: 0817576471

Does the proposed project affect you in any way?

YES

NO X

Do you have any points of concern or support regarding the proposed projects? If "yes", please briefly list these in point format:

YES

NO X

Do you wish this project to proceed?

YES X

NO

SIGNATURE: