

2.4. PROJECT LOCATION

The location of the proposed license area which constitute EPL 7209 situated in North-western Namibia (**Figure 4**), North-west of **Otjikondavirong Village** in the **Opuwo Rural Constituency** within **Otjikondavirong Communal Conservancy**.

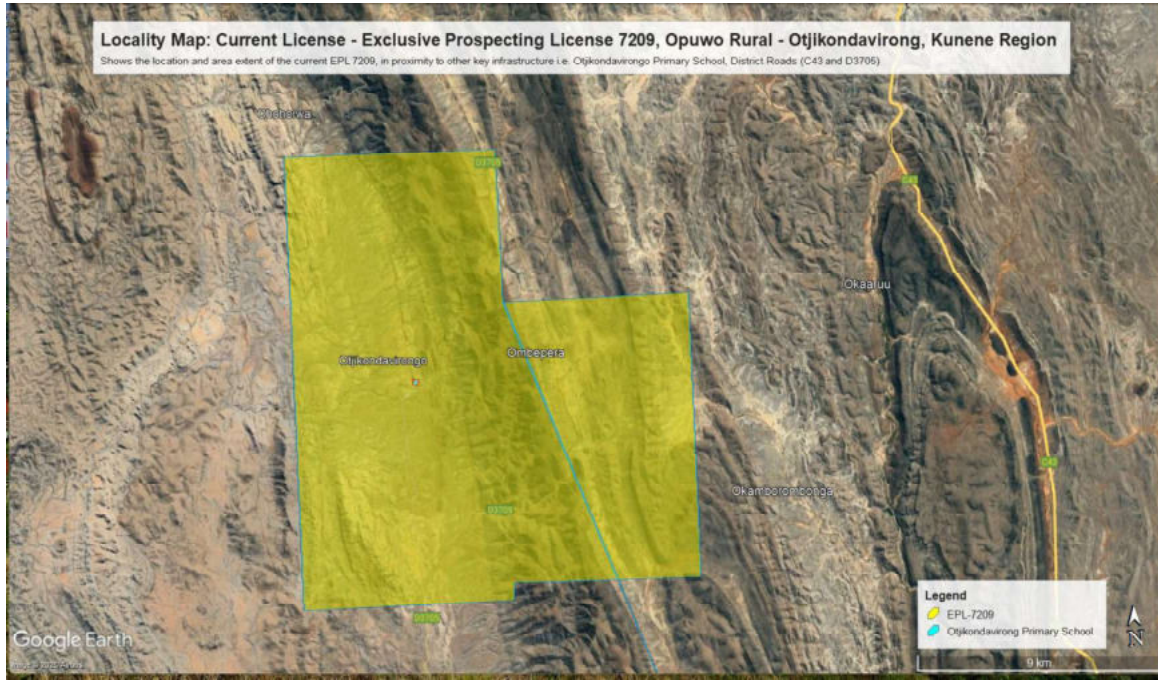


Figure 4: Locality map of the proposed Mining Claims 75181 - 75188 at Otjikondavirongo, Kunene Region

Table 3: Corner coordinates of the proposed development site

Corner point	Latitude	Longitude
A – EPL 7209 Corner Point 1	-18.681665°	13.498808°
B – EPL 7209 Corner Point 2	-18.831443°	13.497921°
C – EPL 7209 Corner Point 3	-18.831657°	13.570847°
D – EPL 7209 Corner Point 4	-18.825919°	13.571377°
F – EPL 7209 Corner Point 5	-18.827250°	13.636752°
G – EPL 7209 Corner Point 6	-18.733046°	13.637276°
H – EPL 7209 Corner Point 7	-18.733152°	13.573203°
I – EPL 7209 Corner Point 8	-18.682657°	13.572884°

The area is accessible via the D3705 exiting Sesfontein into the northerly direction and then onto existing local tracks used for game patrol and local community to access certain areas within the conservancy. Consequently the claims area is accessible by 2x4 / 4x4 pick-up vehicle by the existing tracks and otherwise, the sensitive section of the area will only be accessed by foot to ensure minimum impacts on the receiving environment

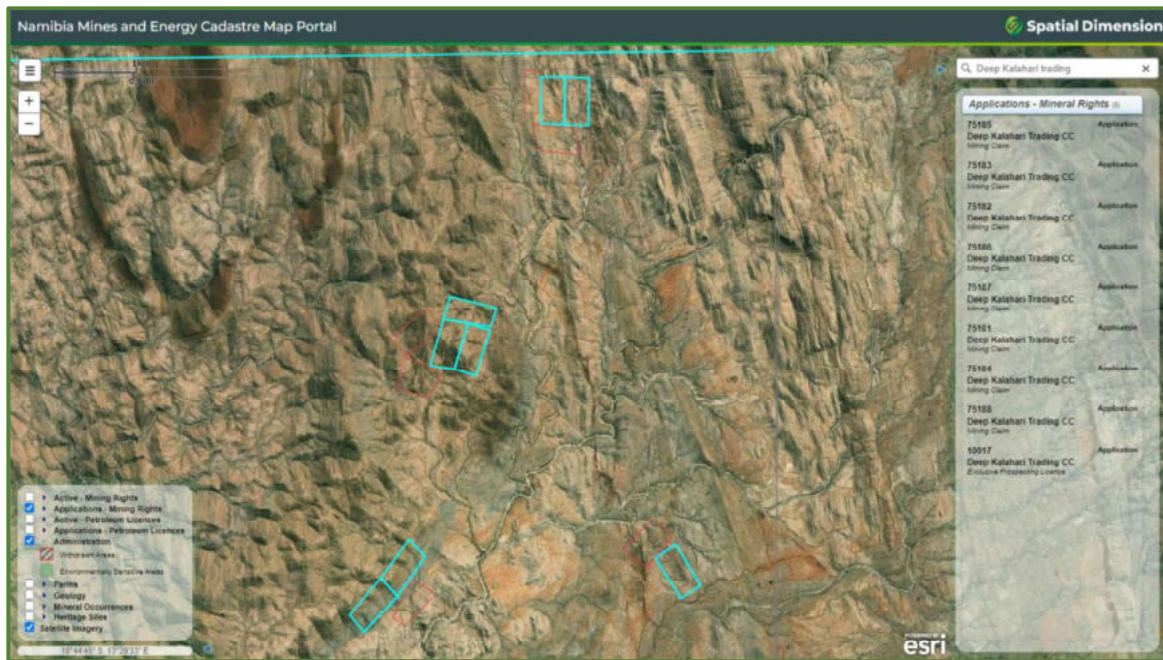


Figure 5: Evidence of the proposed mining claims application on the Ministry of Mine's cadastre (MME, 2024)

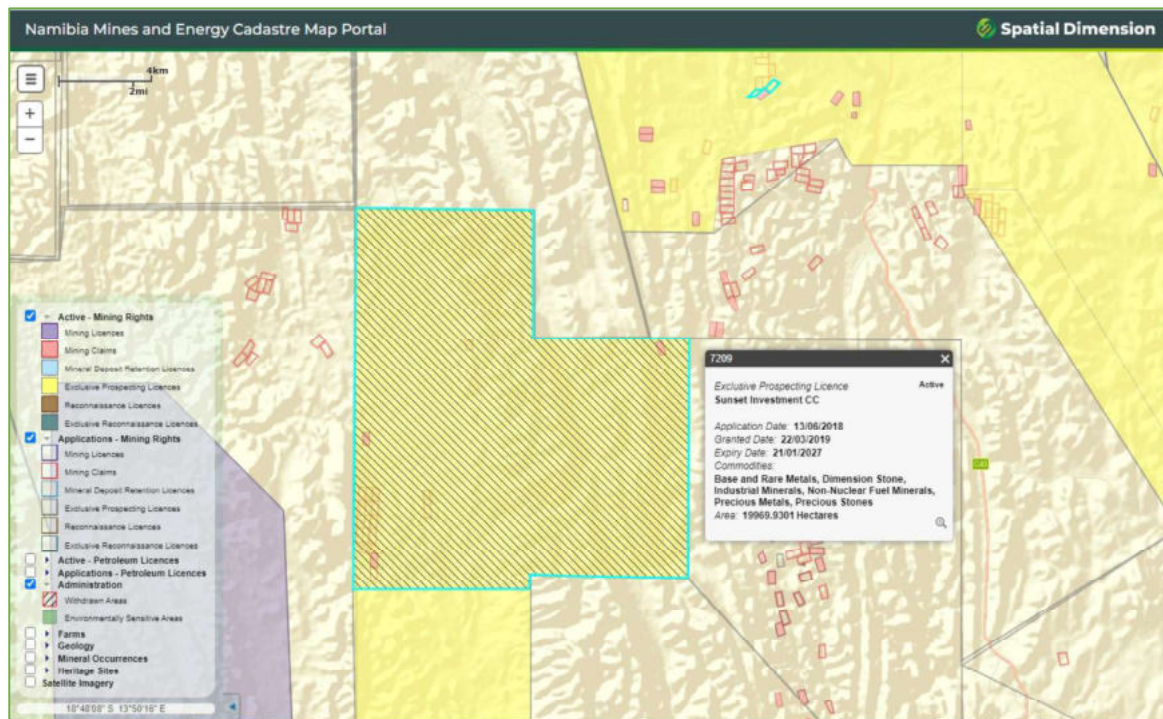


Figure 5: Evidence of the proposed mining claims application on the Ministry of Mine's cadastre (MME, 2025)

2.4. SUPPORTING INFRASTRUCTURE

2.4.1 Basecamp

Given the location of the EPL and that it is situated in a community conservancy i.e. Otjikondavirongo Conservancy, an entirely new base-camp is not primarily recommended but rather a suitable community campsite must be rented for the duration of the exploration and or mining activity. Otherwise, a suitable site must be identified in collaboration with all