

Sesfontein Conservancy

The Sesfontein Conservancy, established in July 2003, encompasses 2,465 square kilometers within Namibia's Kunene Region. The name "Sesfontein," derived from Afrikaans, translates to "six fountains," reflecting the presence of natural springs in the area. The conservancy is distinguished by the scenic Hoanib Valley and features a historical German fort, adding cultural significance to its natural landscape.

Location

The conservancy is bordered by the Skeleton Coast Park to the west, and the Palmwag Tourism Concession to the north (See Figure 1 below).

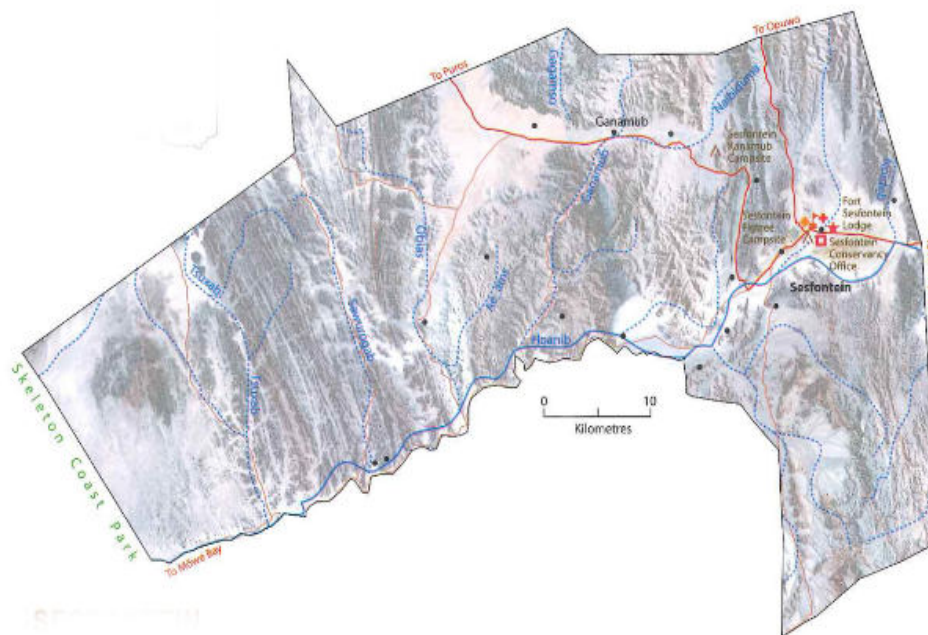


Figure 1. Map of Sesfontein Conservancy (Source: NASCO, 2022)

The proposed boreholes will be drilled at Ozorondohungu area, GPS coordinate 19.15388889⁰ S, 13.55333333⁰ E (see figure 2&3)



Figure 2. Aerial view of Ozorondohungu Borehole site



Figure 3. Ozorondohungu Borehole site (pile of rocks) (Source Red-Dune 2024)