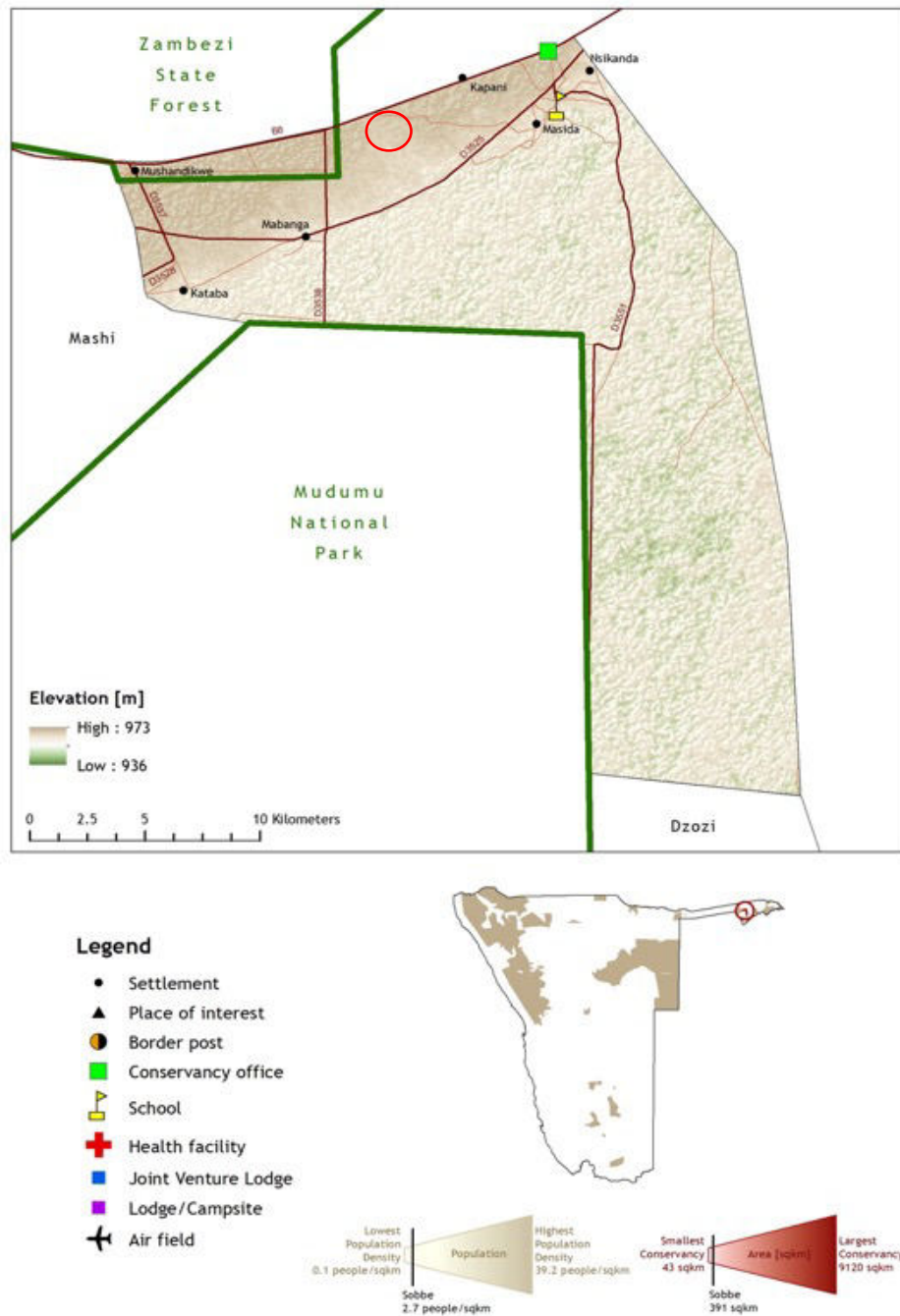


## Sobbe Conservancy

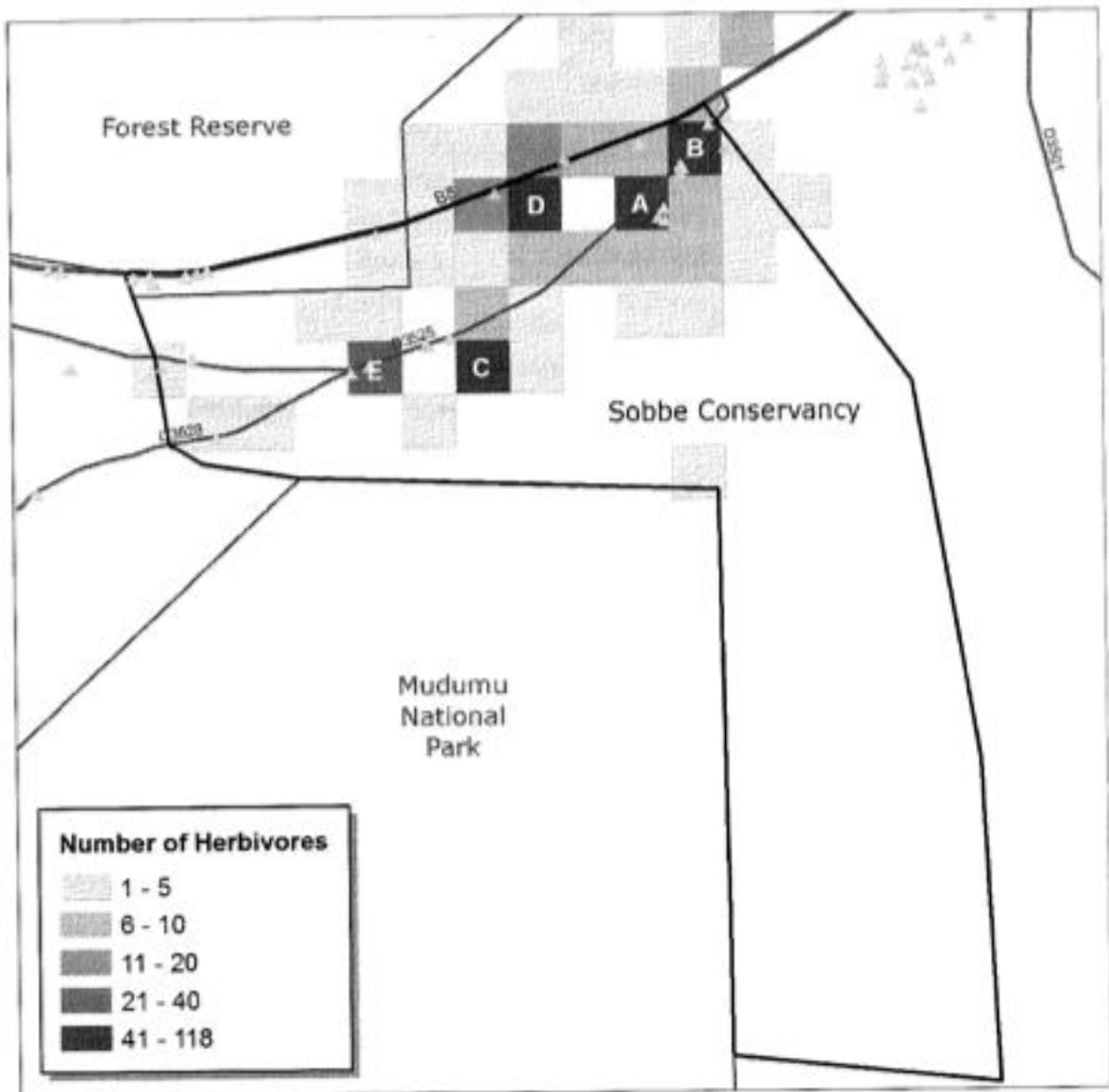
Gazetted in 2006, Sobbe Conservancy has an area of 404 km<sup>2</sup> and an approximate population of 1,115 people. It is located in Zambezi Region, it borders with the Mashi Conservancy to the east, the Zambezi State Forest to the north and the Mudumu National Park (MNP) to the South. The proposed boreholes will be drilled in two villages notably, at Kandiana village (17.854167 S, 23.6475 E).



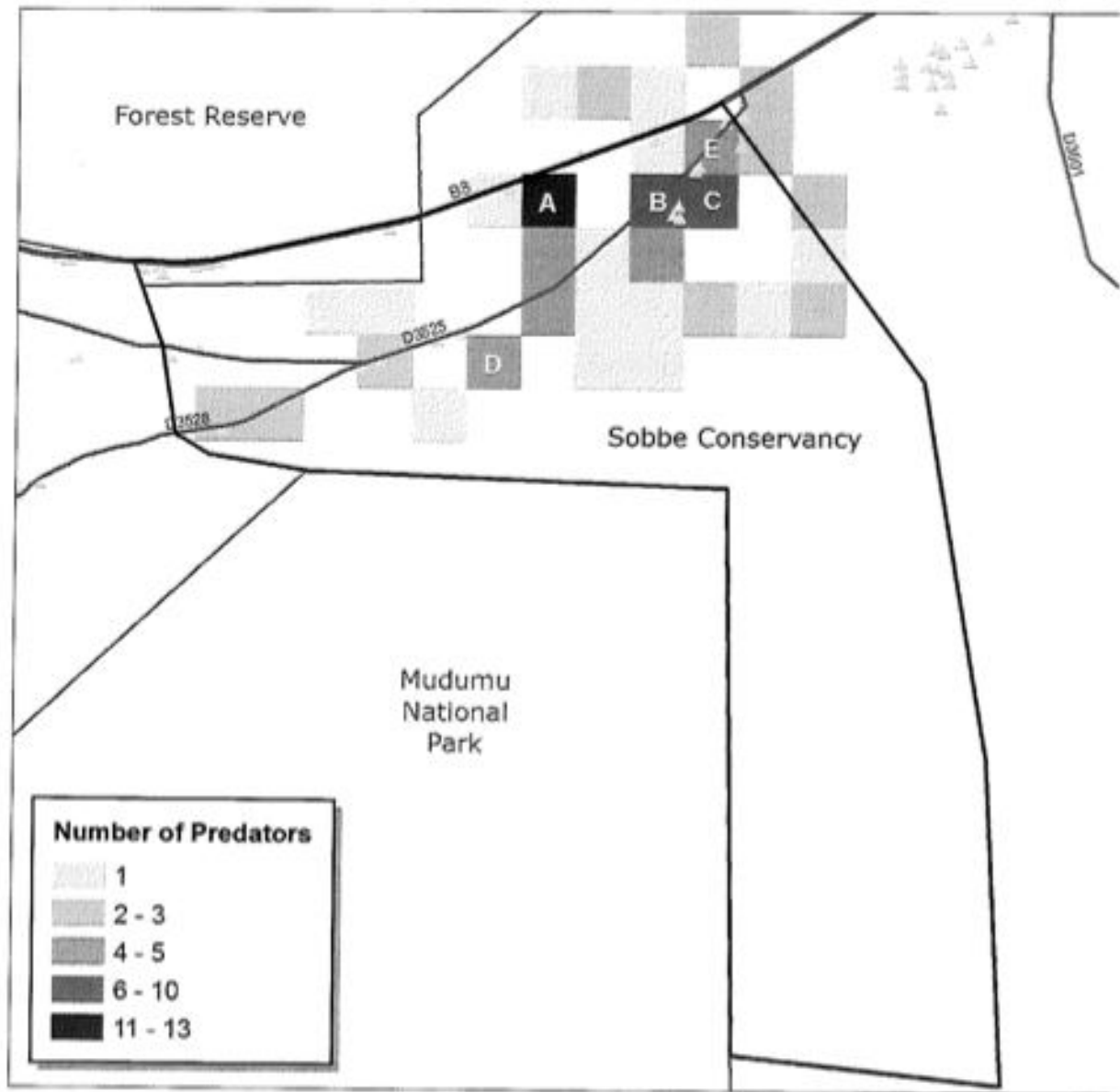
**Figure 1:** Locality map of Sobbe Conservancy and borehole site (Red-Circle)

## Areas most affected by HWC

The HMC hotspots are mostly located on the north of the conservancy in the areas of Mabanga 1,2 and 3, Masida, Naiponela, Kansoka, Kapani, Savelo and Kataba Figure 2. Kandiana village falls under hotspot D and A for crop and predation respectively.



**Figure 2.** Main areas where crop raiding occur in Sobbe Conservancy



**Figure 3.** Main areas where predation of livestock by predators occur in Sobbe Conservancy

## Physical Characteristics

Sobbe Conservancy, like the entire Zambezi lies on flat topography whose landscape is characterised by large area of mopane woodland (see **Figure 4** below) . The Trans-Capriivi Highway (B8) delineates the northern border of the conservancy.



**Figure 4.** Physical characteristic of Sobbe Conservancy