

2.4. PROJECT LOCATION

The location of the proposed license area which constitute Mining Claims (MCs 75181 - 75188) situated in North-western Namibia (**Figure 4**), North-west of **Otjikondavirong Village** in the **Opuwo Rural Constituency** within **Otjikondavirong Communal Conservancy**.

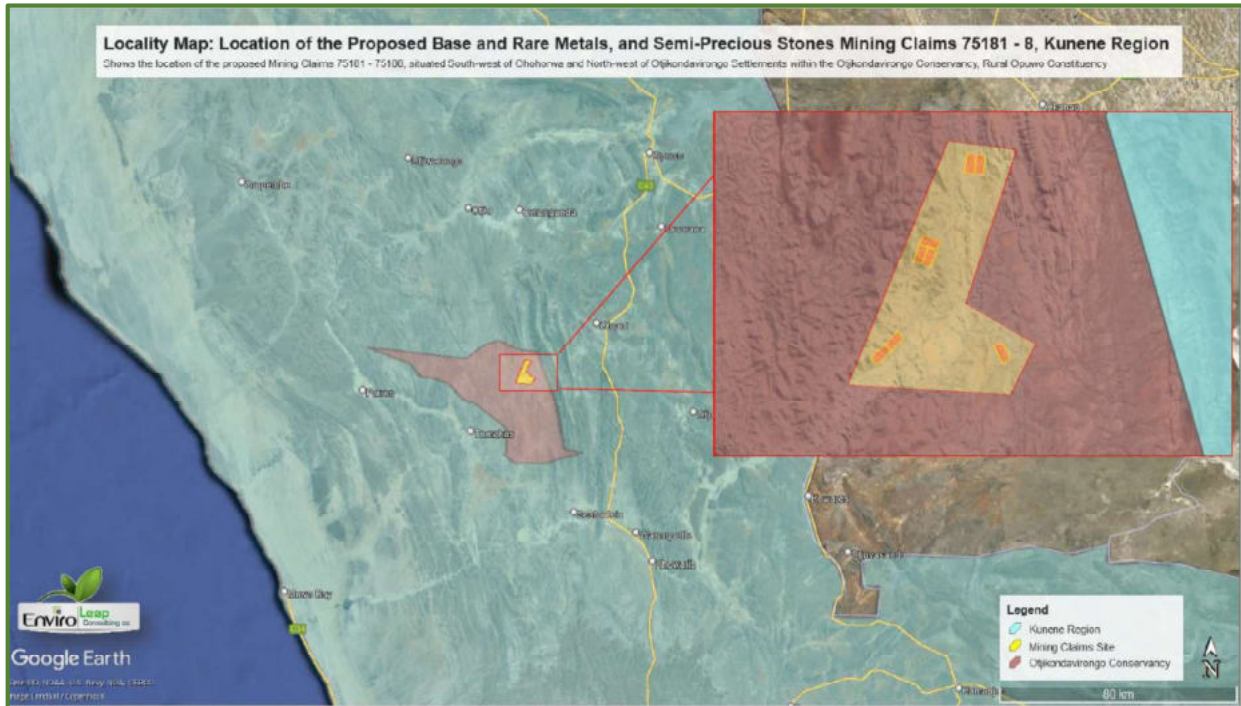


Figure 4: Locality map of the proposed Mining Claims 75181 - 75188 at Otjikondavirong, Kunene Region

Table 3: Corner coordinates of the proposed development site

Corner point	Latitude	Longitude
A – MC 75181 (Centre Point)	-18.740632°	13.451231°
B – MC 75182 (Centre Point)	-18.736227°	13.454810°
C – MC 75183 (Centre Point)	-18.736390°	13.487492°
D – MC 75184 (Centre Point)	-18.712105°	13.462957°
F – MC 75185 (Centre Point)	-18.711878°	13.460473°
G – MC 75186 (Centre Point)	-18.707455°	13.462728°
H – MC 75187 (Centre Point)	-18.683719°	13.472883°
I – MC 75188 (Centre Point)	-18.684406°	13.475254°

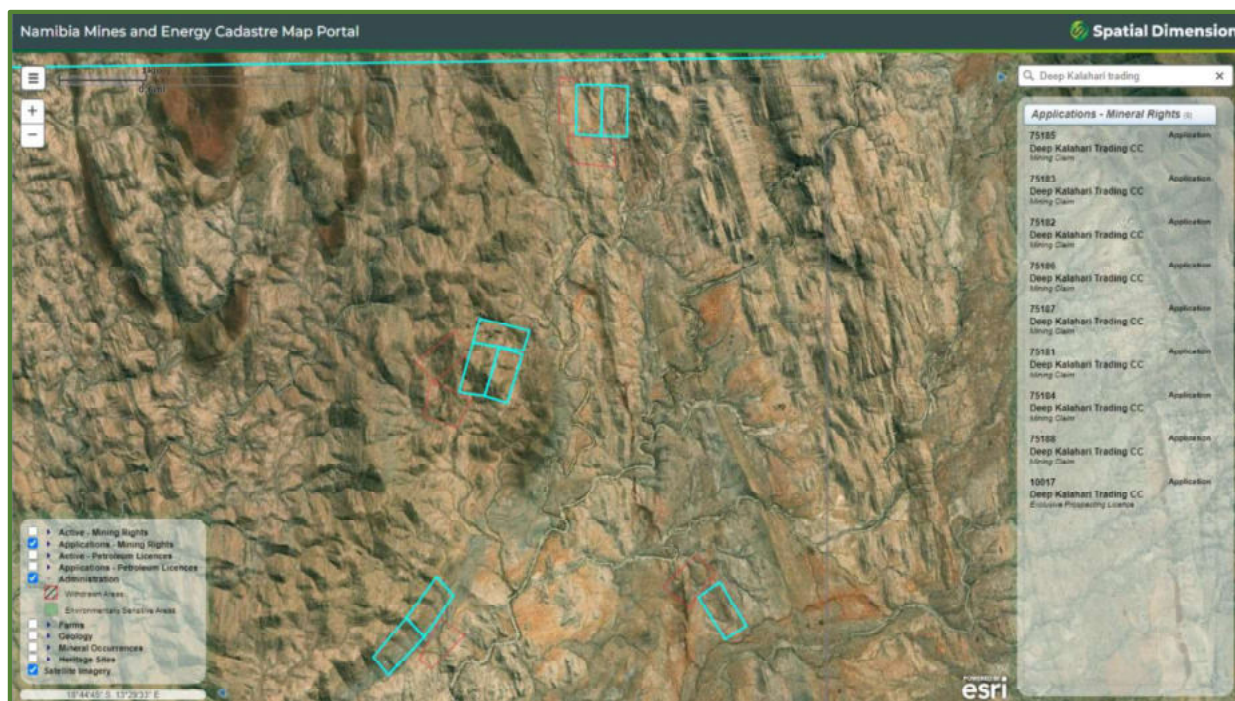


Figure 5: Evidence of the proposed mining claims application on the Ministry of Mine's cadastre (MME, 2024)

2.4. SUPPORTING INFRASTRUCTURE

2.4.1 Basecamp

Given the location of the MC'S and that it is situated in a community conservancy i.e. Otjikondavirongo Conservancy, an entirely new base-camp is not primarily recommended but rather a suitable community campsite must be rented for the duration of the exploration and or mining activity. Otherwise, a suitable site must be identified in collaboration with all relevant authorities including the Traditional Authority. Where practical and possible, it is strictly recommended that for unskilled labour, local community members are employed and thus accommodated at their existing homestead to mitigate and reduce potential conflict with the conservancy wildlife and livestock management protocols.

During the prospecting period, it is anticipated that about 10 – 15 persons will be employed, although only four staff are allowed to lodge on-site on an alternating (rotating) basis. The project specialists such as geologists, field assistants, geo-technicians and sampling crew, will be hosted on either a daily or special visit basis, and thus might not all be on-site simultaneously.

Therefore, it is highly recommended that temporary ablution facilities must be provided and limited to within the existing base-camp footprint pre-identified national park campsites, and the necessary authorization must be obtained prior to installation of any such facility.

In terms of waste generation and management, the predominant type of waste that will be generated during the exploration activities, in small volumes, is domestic waste i.e. packaging material (paper, wooden box, plastic sampling bags), and potentially hydrocarbons from diesel oil should a power generator needed. Domestic waste must be stored in heavy duty garbage bags and disposed of correctly at the Henties Bay waste disposal site (refer to EMP commitments).