



**Physical Address:** 5<sup>th</sup> Floor, Maerua Mall, Office Block B

**Postal Address:** PO Box 997154 Maerua Mall, Windhoek

**Telephone:** +264 (0) 61 259 530 **Fax/Email:** +264 (0) 886 560 836

**Email:** [info@edsnamibia.com](mailto:info@edsnamibia.com) **Web:** [www.edsnamibia.com](http://www.edsnamibia.com)

## **BACKGROUND INFORMATION DOCUMENT (BID)**

# **ENVIRONMENTAL SCOPING ASSESSMENT (ESA) FOR THE PROPOSED SMALL SCALE MINING ACTIVITIES ON MINING CLAIM NO. 74633-74634, LOCATED NORTH EAST OF OTJOSONDU, OTJOZONDJUPA REGION.**

**Environmental Consultant:** Excel Dynamic Solutions (Pty) Ltd

**Proponent:** Arc Planners and Investment CC

## 1 INTRODUCTION

Arc Planners and Investment CC (*The Proponent*) has applied to the Ministry of Mines and Energy (MME) for the proposed small-scale mining activities on Mining Claims (MCs) No. 74633-74634 on the 26<sup>th</sup> of May 2023. However, the approval and granting of these MCs is subject to an Environmental Clearance Certificate (ECC) from the Ministry of Environment, Forestry and Tourism (MEFT). MC 74633 covers a surface area of 17.8633 hectares (Ha) while MC 74634 covers a surface area of 16.1899 giving a total surface area of 34.0532 ha as shown in **(Figure 1)**. The MCs overlie farm Labusrus 510 and are located about 18 Km north east of Otjosondu in the Otjozondjupa region as shown in **(Figure 2)**. The target commodities are **Base & Rare Metals**.

All mining-related activities are among the listed activities that may not be undertaken without an ECC under the Environmental Management Act (EMA) (2007) and its 2012 Environmental Impact Assessment (EIA) Regulations. The relevant listed activities as per EIA regulations are:

- *3.1 The construction of facilities for any process or activities which requires a license, right of other forms of authorization, and the renewal of a license, right or other forms of authorization, in terms of the Minerals (Prospecting and Mining Act, 1992).*
- *3.2 other forms of mining or extraction of any natural resources whether regulated by law or not.*
- *3.3 Resource extraction, manipulation, conservation, and related activities.*

The Proponent is, therefore, required to obtain an Environmental Clearance Certificate (ECC) before the commencement of mining works on the MC. To fulfill the legal requirements, the Proponent has appointed Excel Dynamic Solutions (Pty) Ltd (Environmental Consultants), to conduct the required Environmental Scoping Assessment (ESA) process and submit the ECC application to the Department of Environmental Affairs and Forestry (DEAF) at the Ministry of Environment, Forestry & Tourism (MEFT).

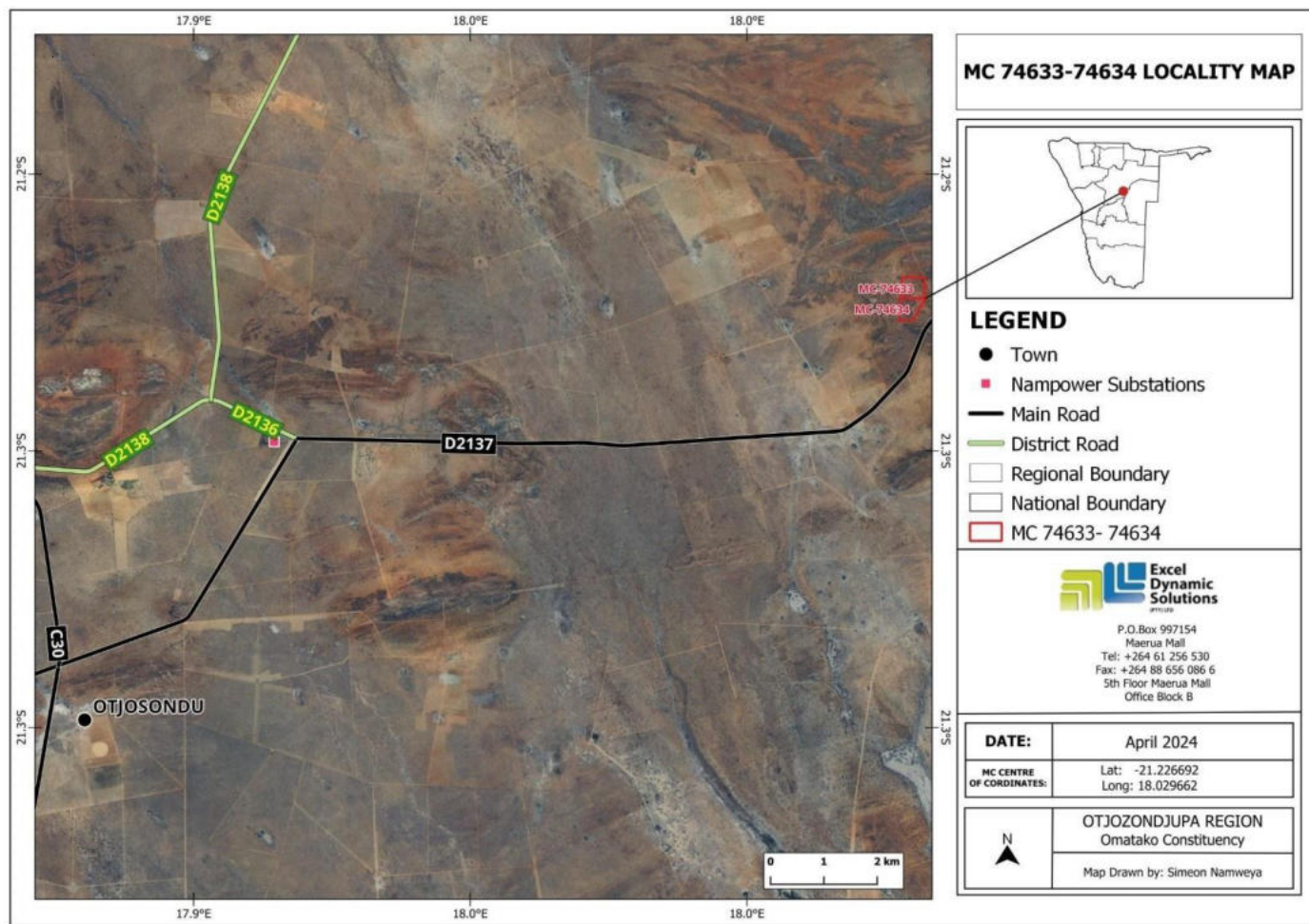


Figure 1: Locality map of MC located near Okahandja

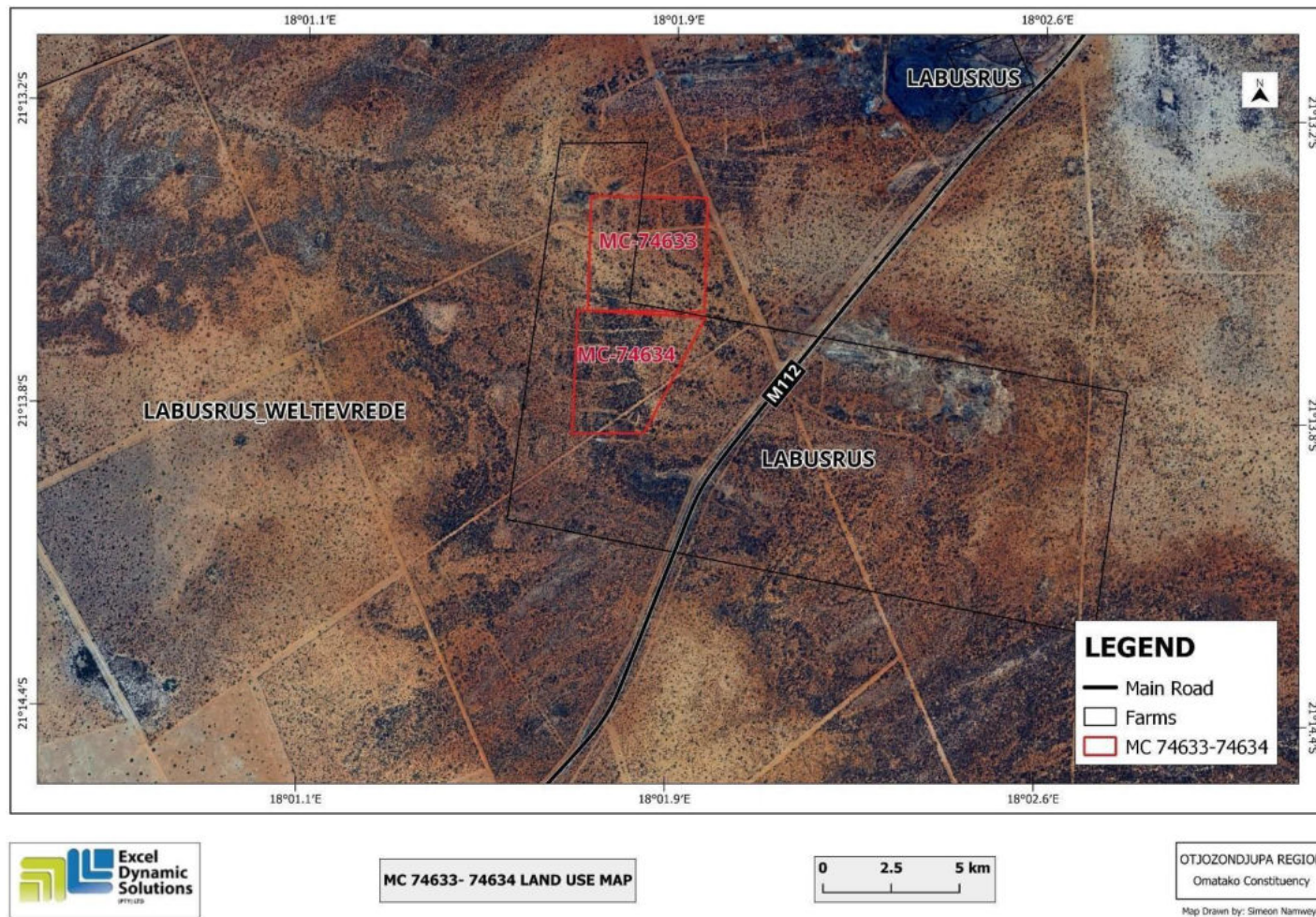


Figure 2: The land use map



## 2. PURPOSE OF THIS DOCUMENT

It should be noted that the Background Information Document (BID) is a non-technical document of the ESA (not an ESA Report). The BID aims to briefly introduce the proposed project and related activities to interested and affected parties (I&APs) / stakeholders, and provide them with an opportunity to raise issues, and concerns / submit comments about the proposed project.

The planned mining activities will only commence once the Proponent has been issued with an ECC and obtained all required permits,

## 3. PROJECT DESCRIPTION

The following project activities will be undertaken for the anticipated plus or minus three (+-3) years of mining activities.

### 3.1 Project Activities

The proposed mining activities (methods) are divided into the following categories:

**Phase 1:** Non-invasive techniques –This phase includes Geological mapping, reviewing of existing geological maps, field evaluation and soil sampling,

**Phase 2:** Invasive techniques - Pitting, drill blasting and exactions mining, crushing and screening processing, density and magnetic separation beneficiation.

### 3.2 Human Resources, Services, and Infrastructure

The following services and infrastructure as outlined below will be required for the project activities:

**Human Resources:** Around 45-55 people will be employed for the project. This workforce will include general, skilled, and semi-skilled workers, and will be accommodated in the nearest settlement or tented camps onsite if necessary.

**Water Supply:** Around 4000 liters of water per month will be required for the activities.

**Fuel Supply (machinery and equipment):** Diesel will be used for machinery and equipment, and power generator.

**Accessibility:** The MC is accessible via the M57 and M112 roads, Otjozondjupa Region.

### 3.3 Waste Management

**Sewage:** Mobile chemical ablution facilities will be provided on-site. Sewage waste will be disposed of appropriately as per instructions of the facility manufacturer.

**Solid waste:** Sufficient waste bins (containers) will be made available at the sites and campsites for waste storage and later disposal at the nearest approved waste facility.

**Hazardous waste:** The waste fuel/oils will be carefully stored in a standardized container for disposal at an approved hazardous waste management facility in the nearest Town.

**Health and Safety:** Adequate and appropriate Personal Protective Equipment (PPE) will be provided to project personnel. A minimum of two first aid kits will be readily available onsite.

**Potential Accidental Fire Outbreaks:** Fire extinguishers will be readily available in vehicles, at the sites, and at campsites.

**Project Equipment, Material, Machinery, and Vehicles:** 4X4 vehicles, a supporting pick-up truck, an excavator/front-end loader, jack hammer and a generator for power supply will be required for the proposed project.

Upon completion of mining works, the disturbed sites will be rehabilitated to their pre-mining phase as far as practically possible. This will include backfilling of pits, and boreholes, leveling of stockpiled topsoil, and cleaning of site areas.

#### **4. ENVIRONMENTAL ASSESSMENT**

This ESA process is conducted in accordance with the provisions of the EMA (Act No 7 of 2007) and its 2012 EIA Regulations. The primary objective of the ESA is to identify potential negative impacts associated with the project and assess them. Practical and effective mitigation measures will be recommended for implementation.

The main objectives of this ESA are to:

- Identify potential impacts associated with the proposed Activity.
- Inform I&APs and relevant authorities about the project and provide them with an opportunity to participate during the ESA process.
- Assess the significance of issues and concerns raised.
- Compile a report addressing all identified issues and potential impacts.
- Compile a Draft Environmental Management Plan (EMP) which includes impacts management and mitigation measures.

## **5. PRE-IDENTIFIED POTENTIAL IMPACTS**

The following potential impacts have been identified:

### **5.1 Positive:**

- Socio-economic development: employment creation and skills transfer.
- Investment opportunities
- Produce a trained workforce
- Boosting local economic and regional economic development.
- Increased support for local businesses through the procurement of locally available goods and services.

### **5.2 Negative Impacts:**

- Disturbance of existing grazing areas,
- Physical land/soil disturbance and prone to erosion
- Impact on fauna and flora (habitat disturbance and poaching).
- Water resources (over-abstraction of water) and soil pollution.
- Air quality issue owing to dust generation
- Occupational and community health and safety risks/hazards
- Vehicular traffic safety and services infrastructure (local roads).
- Vibrations and noise associated with drilling activities.
- Environmental pollution from poor waste management,
- Archaeological or cultural heritage impact
- Potential social nuisance and land use conflicts

Other potential impacts may be identified as the ESA process progresses. All impacts and public concerns/comments will be incorporated and addressed in the Environmental Report and EMP.

## **6. PUBLIC CONSULTATION REGISTRATION**

Public consultation is an important part of the EA process. During the consultation process, I&APs are allowed to raise any issues or concerns pertaining to the project activities.

To comment or receive further information on the project, **please register with Excel Dynamic Solutions (Pty) Ltd** (contact details herein) as an Interested and Affected Party (I&AP).

Furthermore, the Consultation Meeting details will be communicated with registered I&APs.

For comments and/or further information requests, please contact EDS Consultant on the details provided below:

**Contact:**

**Ms. Iyaloo Nakale**

**Environmental Assessment Consultant**

**Excel Dynamic Solutions (Pty) Ltd**

**Tel: +264(0)61 259 530 Email: [iyaloon@edsnamibia.com](mailto:iyaloon@edsnamibia.com)**