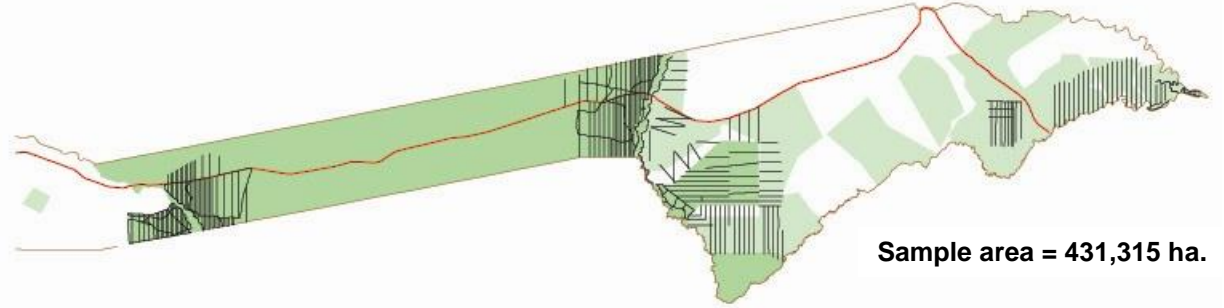


# GAME COUNTS IN EAST ZAMBEZI

## Dry Season 2014

### Live sightings



Sample area = 431,315 ha.

### Numbers seen:

Area	Balyerwa	Dzoti	Kwandu	Mashi	Mayuni	Mudumu	Salambala	Sikunga	Sobbe	Wuparo
Total km	79	77	80	104	74	312	199	47	99	57
No. of routes	12	12	11	9	6	23	16	4	10	5
Species										
Baboon				21		127	50			
Buffalo						93				
Bushbuck									1	
Bushpig										
Crocodile										
Duiker	2	8	4	8	4	29	6	1	9	3
Eland		30				3				
Elephant	3	39	10	10	20	441				
Giraffe				3	4	15				
Hippo				1		8				
Hyaena										
Impala	3				4	335	78			9
Jackal BB				1		2				
Kudu	1		12			68	19	7	3	4
Lechwe					8	24				
Leopard										
Lion						1				
Ostrich										
Reedbuck						2				
Roan	3	9		3		110			9	5
Sable										18
Steenbok	1					13				1
Tsessebe										
V. Monkey										
Warthog	2	5		1	2	72	42			5
Wild dog										
Wildebeest				1		149	283	51	6	
Zebra	5	6				216	2501		25	7



### Habitat

Species	Riverine zone with floodplain grassland	Woodland < 8km from the river	Woodland > 8km from the river	Eastern floodplain and grassland
Baboon	0	127	71	0
Buffalo	0	93	0	0
Bushbuck	0	0	0	0
Bushpig	0	0	1	0
Crocodile	0	0	0	0
Duiker	3	11	59	1
Eland	0	0	33	0
Elephant	32	162	324	0
Giraffe	3	4	15	0
Hippo	1	8	0	0
Hyaena	0	0	0	0
Impala	11	262	155	1
Jackal BB	0	2	1	0
Kudu	16	21	77	7
Lechwe	8	24	0	0
Leopard	0	0	0	0
Lion	0	0	1	0
Ostrich	0	0	0	0
Reedbuck	0	1	1	0
Roan	0	7	132	0
Sable	0	0	18	0
Steenbok	0	5	10	0
Tsessebe	0	0	0	0
V. Monkey	0	0	0	0
Warthog	1	30	94	4
Wild dog	0	0	0	0
Wildebeest	0	42	337	111
Zebra	0	35	908	1817

### 2014 vs 2013

Species	Animals		Groups	
	2013	2014	2013	2014
Baboon	20	198	2	10
Buffalo	75	93	1	2
Bushbuck	0	0	0	0
Bushpig	0	1	0	1
Crocodile	0	0	0	0
Duiker	89	74	86	66
Eland	27	33	6	2
Elephant	555	523	53	43
Giraffe	13	22	5	9
Hippo	4	9	3	2
Hyaena	2	0	1	0
Impala	692	429	37	37
Jackal BB	2	3	2	3
Kudu	61	114	16	24
Lechwe	0	32	0	3
Leopard	0	0	0	0
Lion	0	1	0	1
Ostrich	0	0	0	0
Reedbuck	3	2	1	2
Roan	96	139	28	25
Sable	46	18	8	1
Steenbok	15	15	15	12
Tsessebe	1	0	1	0
V. Monkey	3	0	1	0
Warthog	99	129	44	51
Wild dog	0	0	0	0
Wildebeest	511	490	13	22
Zebra	2591	2760	26	30

### Estimates

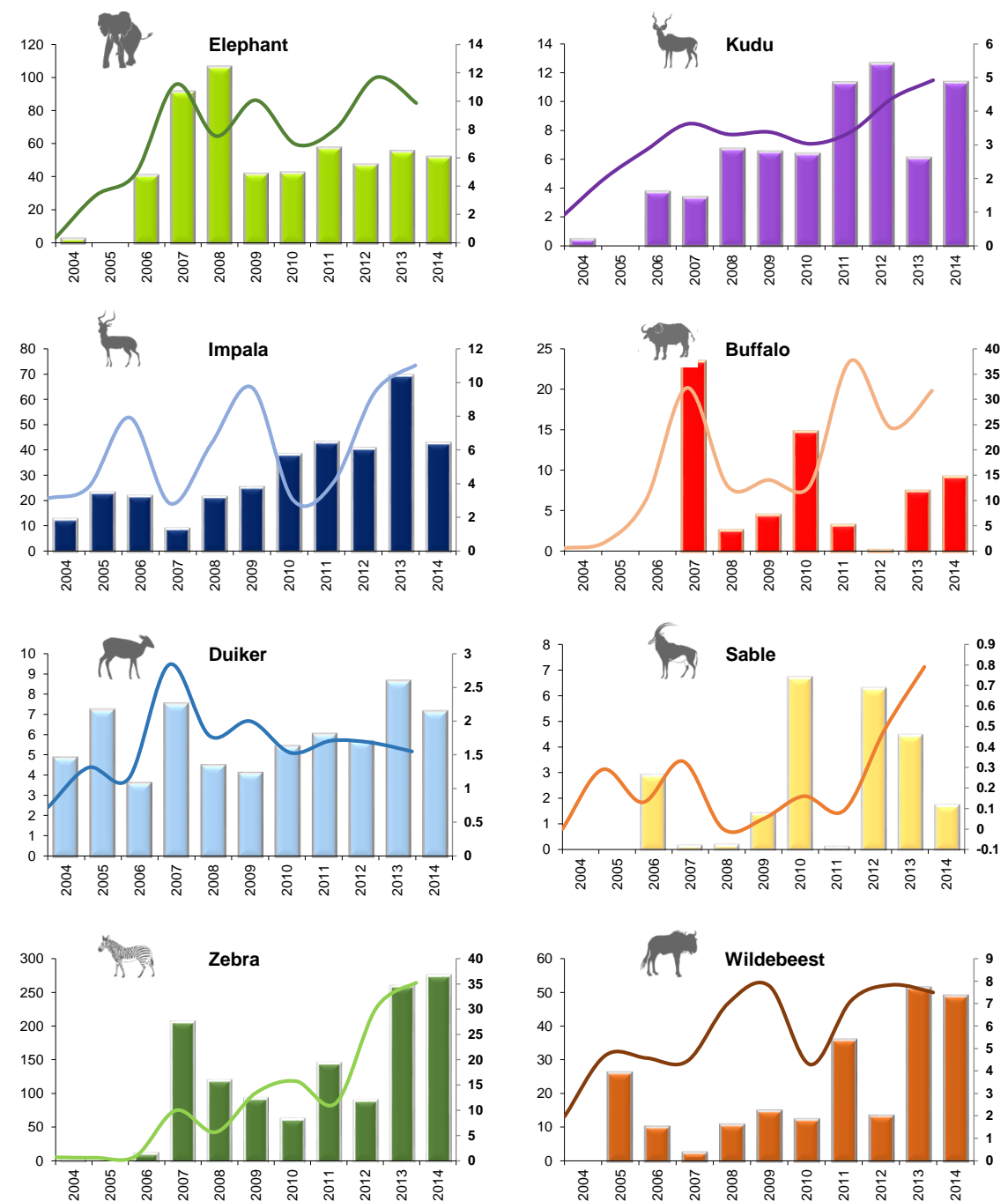
Estimates were calculated using DISTANCE, for all species with sufficient sightings. These are **average** estimates as they are calculated using sightings from the 3 most recent count years. Conservancies have been grouped due to the low numbers of animals recorded. The bottom row of the table (hyphenated) numbers = 95% Confidence Intervals.

Species	Kwandu Mayuni Mashi Sobbe	Mudumu	Balyerwa Dzoti Wuparo	Salambala	Sikunga
Buffalo	0	*	0	0	0
Duiker	1163	861	179	377	*
Elephant	826-1639	605-1225	109-293	201-706	
Giraffe	*	3229	417	0	0
Impala	*	2090-4989	189-919	0	0
Kudu	131	599	*	170	*
Lechwe	56-308	314-1141		59-485	
Reedbuck	0	*	0	0	0
Roan	*	759	50	0	0
Sable	*	466-1239	22-112	0	0
Steenbok	*	0	*	0	0
Tsessebe	0	156-468		0	0
Warthog	73	1582	79	609	0
Wildebeest	23-232	1171-2135	40-158	397-932	0
Zebra	*	546	0	754	*
	*	229-1306	0	290-1965	
	*	2196	*	2501	0
		1362-3541		-	0

\* = too few observations to provide useful local estimates of numbers  
0 = no animals seen in counts

### Trends:

Bars = numbers per 100km; lines = patrol sightings



Bar chart trends were calculated using both dry season and wet season counts for years prior to 2007, and only dry season counts were used from 2007 onwards. Great care should be taken when interpreting the charts prior to, and after 2007 as, in addition to the count season changing, the number of transects increased and their spatial distribution expanded at this time.