

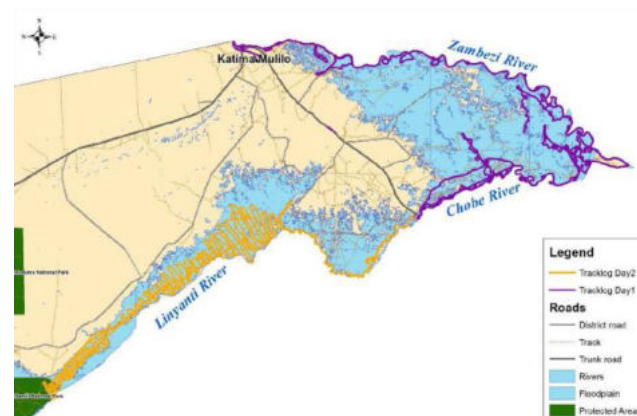
Wildlife censuses of the Zambezi-Chobe-Linyanti wetlands

The aerial survey includes the Eastern Floodplain area from the Zambian border to the Nkasa Rupara National Park border. This represents 1042 square kilometer area stretching over a 380-km portion of the Zambezi, Chobe and Linyanti Rivers.

The area is surveyed during north-east wetland counts by fixed-wing aerial surveys and helicopter surveys.

Helicopter surveys use two observers, one data recorder and a pilot. Transects 400m apart are flown at 90km/h, with back doors open for optimal visibility. The helicopter is circled especially for groups of buffalo, lechwe and hippo, to obtain a better count. Some bigger groups are photographed for verification of group size.

Fixed-wing aeroplane surveys use standard aerial survey methodology. All counts follow the same flight path and give a 100% sampling coverage of the area.



Total numbers of animals recorded:

Helicopter surveys

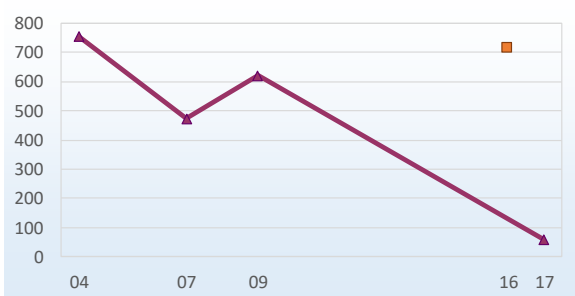
Fixed-wing surveys

* Total

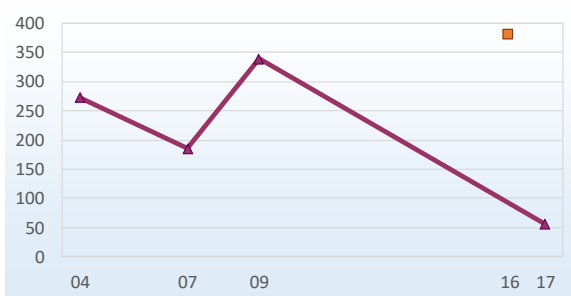
Species	2016	2004	2007	2009	Population estimate
Buffalo	809	1,150	2,148	2,558	809
Common Impala	0	485	801	271	0
Elephant	22	77	552	742	22
Plains Zebra	1,741	1,047	1,558	1,640	1,741
Hippopotamus	380	272	185	339	380
Red Lechwe	38	315	138	92	38
Reedbuck	42	0	3	10	42
Waterbuck	6	53	27	107	6
Crocodile	249	113	119	73	249
Baboon	0	0	15	0	0
Blue Wildebeest	0	0	14	0	0
Bushbuck	0	0	0	0	0
Giraffe	0	8	1	8	0
Kudu	0	4	14	8	0
Ostrich	2	0	0	0	2
Roan	3	0	0	0	3
Sable	0	0	0	0	0
Sitatunga	0	0	0	0	0
Tsessebe	0	0	0	0	0
Warthog	16	18	8	12	16
Total	3,308	3,542	5,583	5,860	3,308

* The best available recent population estimate derived from multiple sources

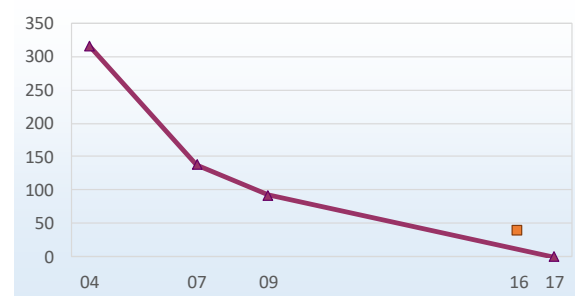
Summary: five wetland species combined



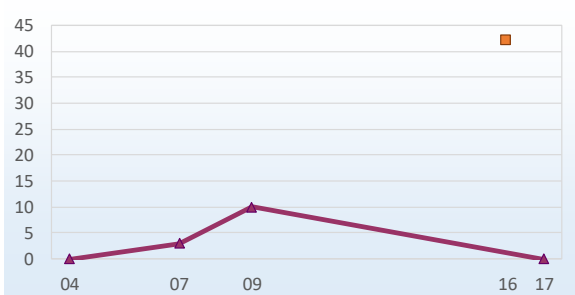
Hippopotamus



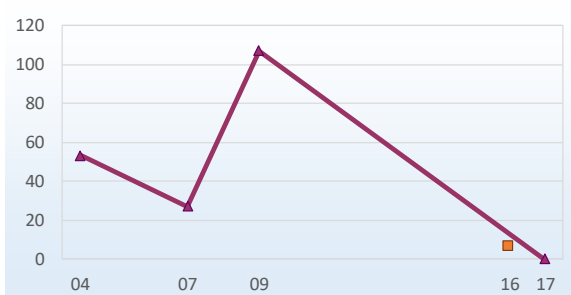
Red Lechwe



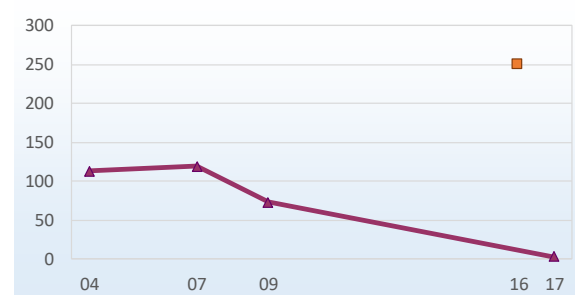
Reedbuck



Waterbuck



Crocodile



— Helicopter survey — Fixed-wing survey



Sponsors:

