

Improving the state of savannahs by wildlife-based land use – a model assessment of alternative land use strategies

Katja Irob¹, Niels Blaum², Ben Strohbach³, Angelina Kandubarisa³, Britta Tietjen¹

¹Institute of Biology - Theoretical Ecology, Freie Universität Berlin, ²Plant Ecology and Nature Conservation, University of Potsdam, ³Agriculture and Natural Resources Sciences, Namibia University of Science and Technology

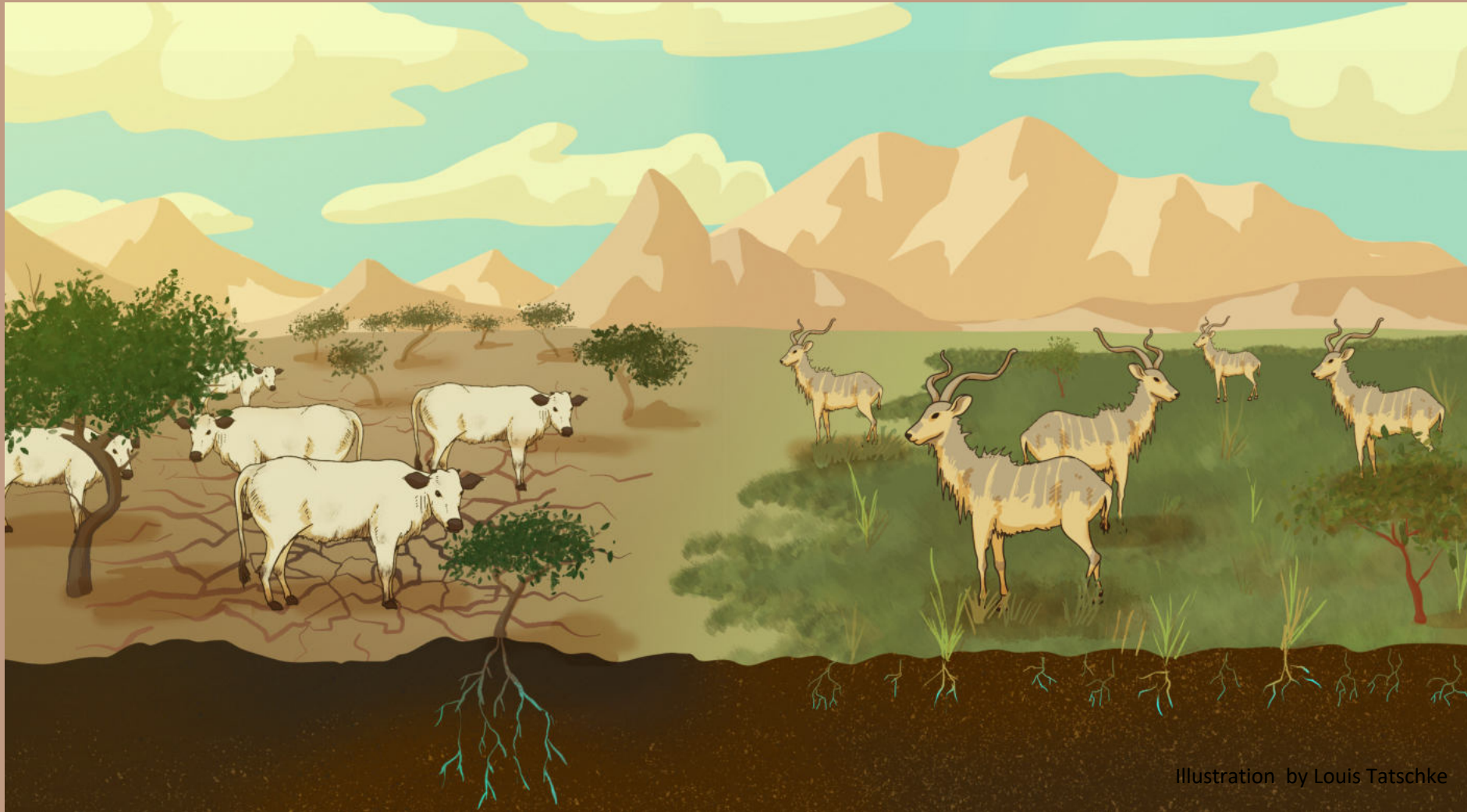


Illustration by Louis Tatschke