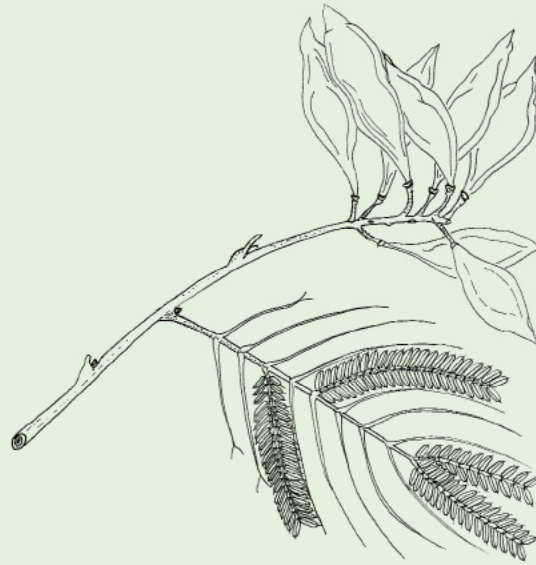


Peltophorum africanum

Muparara

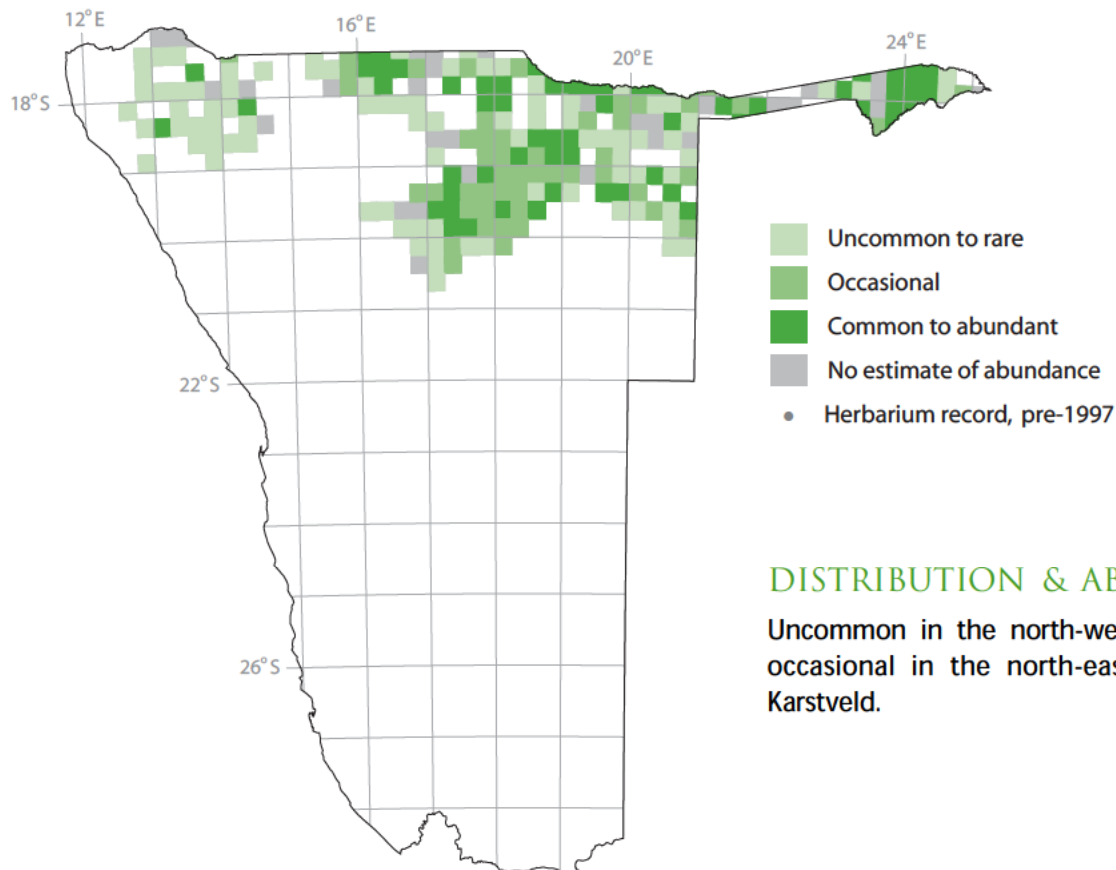
Huilboom, dopperkiaat (A);
omuparara (H); munjele (L);
omupalala (O)

[778 records from 229 (21%) squares]



Shrub, or tree, with a spreading crown. LEAVES bipinnately compound, large; fairly small leaflets, spirally arranged or densely clustered on young shoots; dull green above, with long, soft hairs; pale grey-green below with downy covering. FLOWERS **yellow, showy, in axillary or terminal sprays**. FRUIT a flat, brown, winged, ovoid pod with **both ends pointed**; not splitting open.

Flowers and fruit are conspicuous. May be mistaken for an *Albizia* when not in flower or fruit.

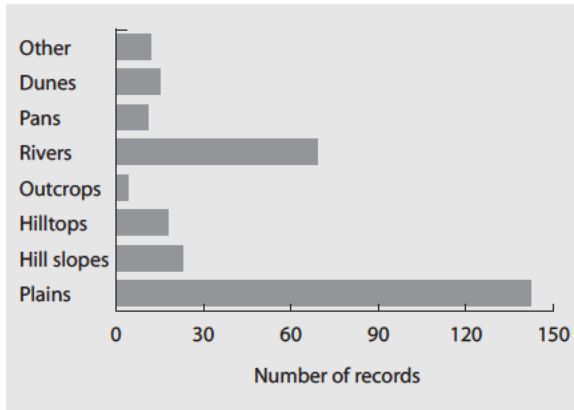


DISTRIBUTION & ABUNDANCE

Uncommon in the north-west; common to occasional in the north-east; common in Karstveld.

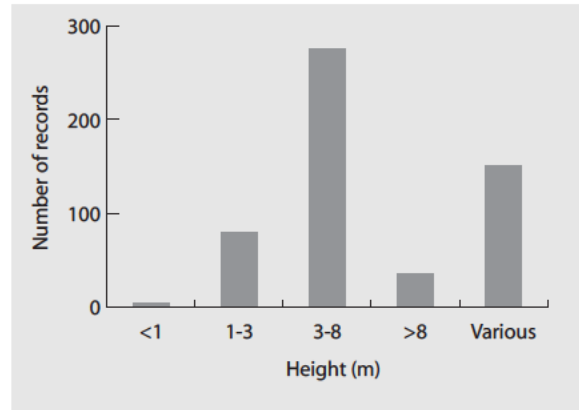
HABITAT

In various habitats, but mostly on sandy plains. Along rivers in the north-west and north-east; on dolomite hill slopes in the Karstveld; on dunes and in pans in the north-east; hilltops in the north-central areas. Occasionally on calcrete, loam or clay substrates.



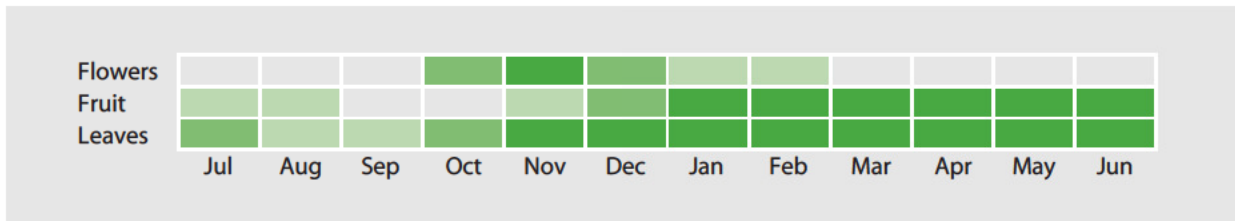
GROWTH FORM

Mostly a tree (80% of records), sometimes a shrub (20%). Generally up to 8 m, but sometimes taller (10%). About half of the records of trees over 8 m were in the area of the Waterberg, on plateaux, cliff faces and valley floors; those in the north-west found on river banks.



ANNUAL CYCLE

FLOWERS October to February, with single records in other months. **FRUIT** mainly December to June. **LEAVES** recorded throughout the year, but trees often bare in winter; young leaves mainly in October.



GENERAL

The wood is used to construct kraal entrances and fences, also for butter-churns, mortars and tool handles. The bark, wood, rotten heartwood, fruit and roots are used medicinally, although the roots are reported to be used to poison people. Crushed parts of the plant are also used to produce an insect repellent for domestic stock. Rotten heartwood is also used for cosmetic purposes.

Black rhino feed on the plants in the Waterberg; the flowers attract bees. Is used extensively in gardens because of its lovely flowers; fairly frost-resistant.

CONSERVATION CONCERNS

None recorded. Protected by forestry legislation.

Peltophorum africanum flowers, B. Curtis

