

Diospyros chamaethamnus

Dwarf Jackal-berry

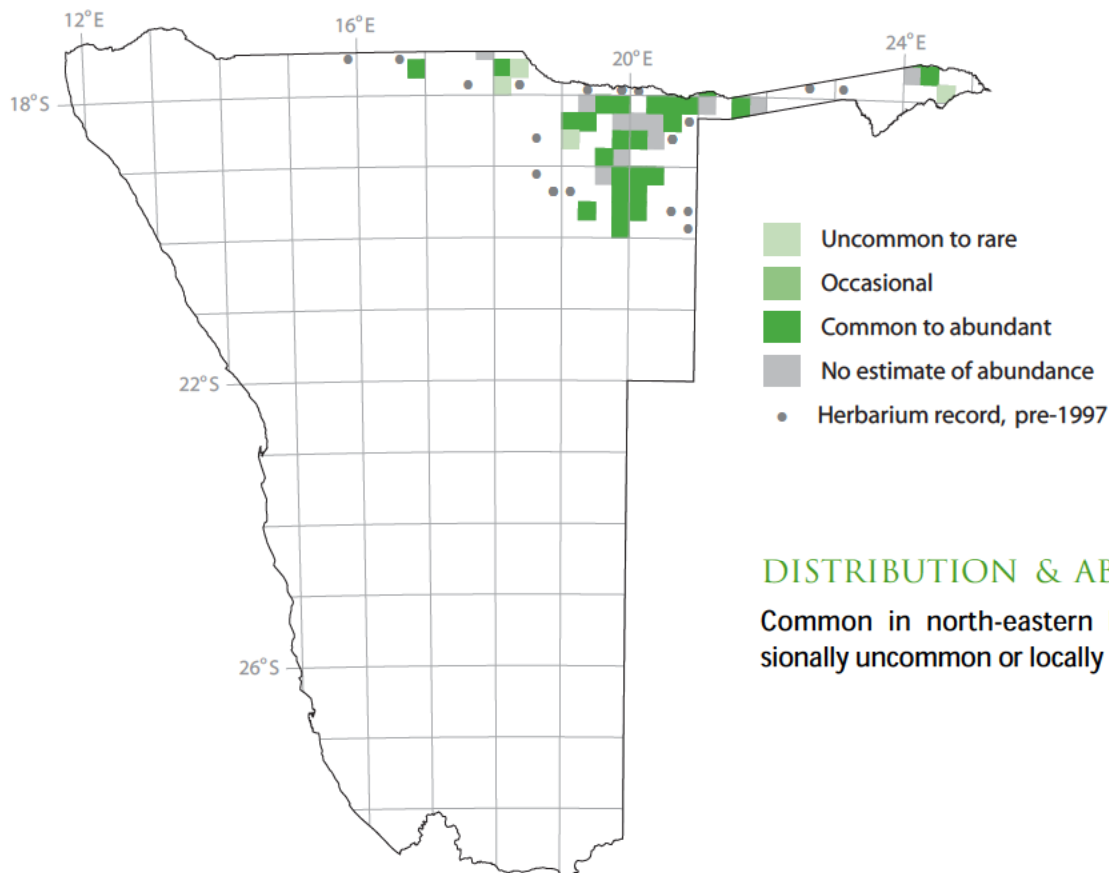
Mukushuwa (L); shikwewo (Rk, Rum)

[47 records from 42 (4%) squares]



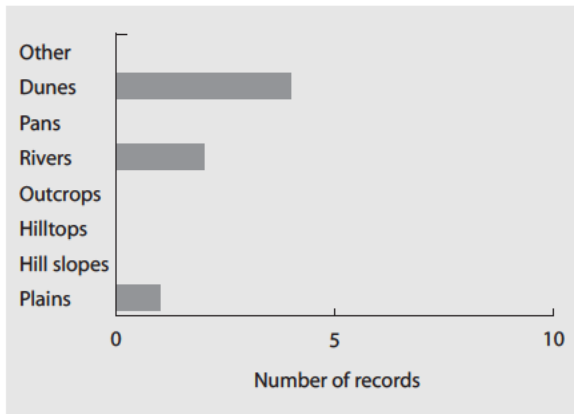
Low, evergreen **suffrutex**, which forms **dense thickets**. **BRANCHES flexible, yellow** with pale brown tint when older. **LEAVES** simple, spirally arranged; oblong to oblong-elliptic, **much longer than broad, leathery; glossy, dark olive-green above**. **FLOWERS** small, cream-coloured; in dense, axillary clusters. **FRUIT** a round berry, covered in red-brown hairs.

Flowers may be overlooked, but the fruit is conspicuous. This plant might have been disregarded by some atlasers, as being too low for inclusion in the project.



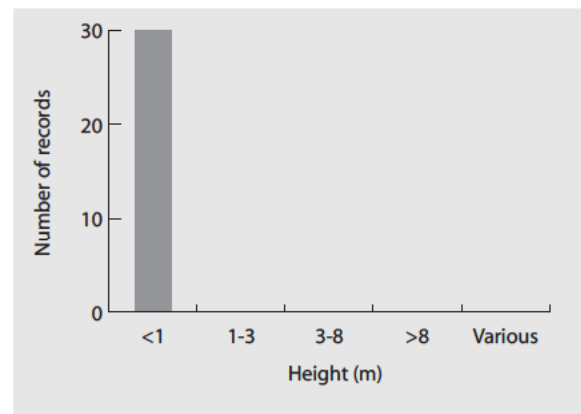
HABITAT

Found on sandy plains, dunes and along dry river beds.



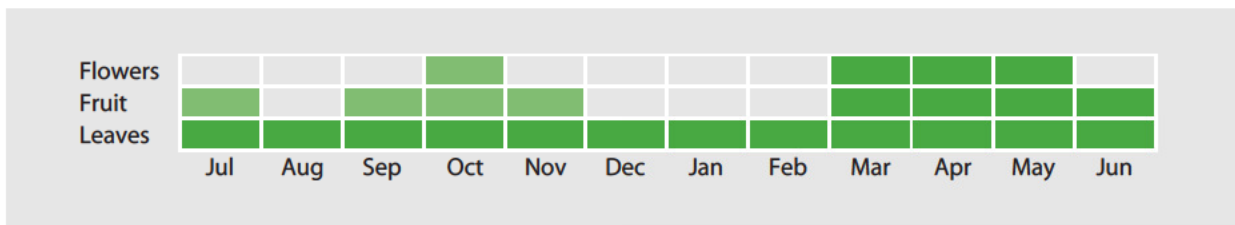
GROWTH FORM

Always a suffrutex, less than 1 m high.



ANNUAL CYCLE

FLOWERS usually from March to May, but sometimes in October. FRUIT March to June, occasionally July to November. LEAVES evergreen.



GENERAL

The fruit is edible.

CONSERVATION CONCERNS

None recorded.

Diospyros chamaethamnus,
leaves and flowers, C. Hines

