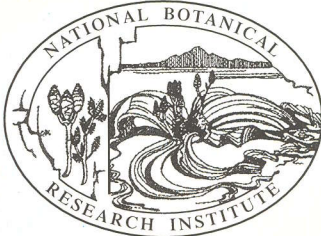


# Spotlight on Agriculture

No 25

Ministry of Agriculture,  
Water and Rural Development  
Directorate of Agriculture Research and Training  
Enquiries: Tel (061) 208 7015 - Renette Krommenhoek, Private Bag 13184, Windhoek

October • 1999



## THE NATIONAL BOTANIC GARDEN OF NAMIBIA

### OUR MISSION

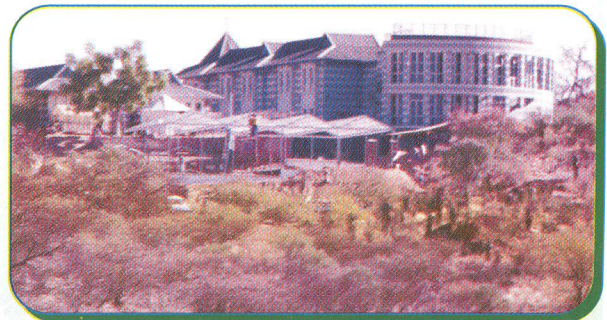
The National Botanic Garden of Namibia strives to protect and promote the sustainable utilisation of the Namibian flora and to function as an educational and recreational nature facility for Namibians and visitors alike.

### OUR OBJECTIVES

- to provide a study area for the flora of Namibia and its ecology
- to serve as an outdoor environmental education facility
- to serve as a training centre, concentrating on practical experience
- to provide a supportive service for research projects
- to serve as a floral conservation area
- to serve as a recreational area

### THE NEED FOR A BOTANIC GARDEN

- Namibia is mostly a dryland area with a unique array of hardy plant species that may be utilised in future for germplasm sources. In *ex situ* conservation the safety of individual, critically important plants may be aided by growing samples of them in places away from their habitat, as is done in botanic gardens.
- Botanical research often necessitates the cultivation of plants for research purposes nearby the centre of activities as many of these plant species grow in remote areas where it is difficult to study them. In a botanic garden these species can be propagated for in-detail studies near such centres.
- Rare and threatened plants attract a surprising interest among visitors and tourists, especially the succulents of southern Namibia. Therefore, the garden can play a leading role in the much needed environmental education, enabling greater success with national conservation strategies.
- Several plants are over-utilised due to the growing population of Namibia. Cases are known where such plants are already extinct. The extinction of plants is a major setback for the people living in the vicinity and to the Namibian plant diversity. This emphasises the need for and importance of environmental education and this is where the National Botanic Garden of Namibia will play a major role, especially as an outdoor education centre.



Our newly developed display house



A school group on a guided tour through the garden



Quiver trees in the National Botanic Garden



## WHAT TO SEE AND DO IN OUR BOTANIC GARDEN

Various self-guided trails lead through the garden. The most common plants are clearly marked, making identification easy for the layman. The garden serves as an educational ground for students and the general public, because the emphasis is put on the grasses, shrubs and trees in their natural environment rather than the artificial landscaping of the garden.

This garden is for the public and therefore public participation is required to ensure that the facility is being developed to suit their needs as well. The public is welcome to become involved in the garden through their specific hobbies. The gathering of on-site information on birds, insects, other animals and plants is needed for good representative checklists for the garden. This will then be used by garden guides and visitors to ensure quality time in the garden. Other projects for public participation:

### Botanical Society of Namibia

(Address: P O Box 24892, Windhoek) and

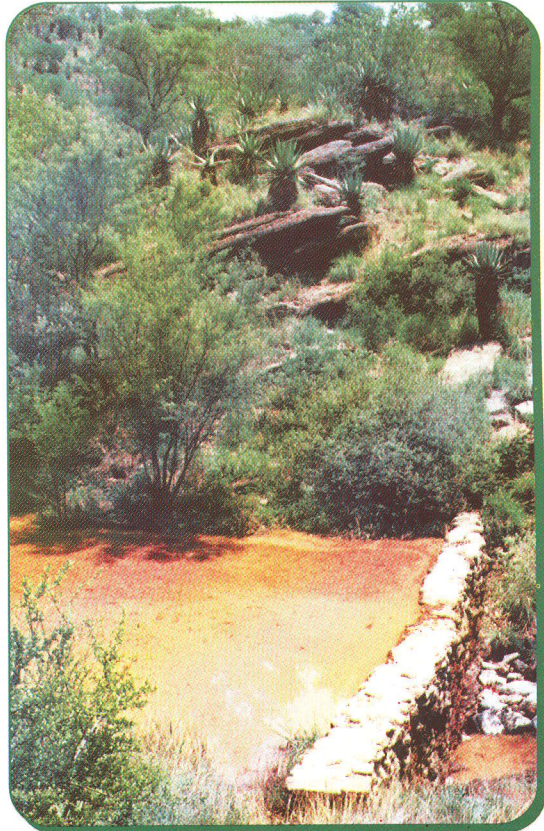
### Namibian Tree Atlas Project

(Contact person: Barbara Curtis)

Tel (+264-61) 202 2021, Fax (+264-61) 258 153

**The garden can be reached through the premises of the National Botanical Research Institute at 8 Orban Street.**

**The National Botanic Garden is open Monday to Friday from 08h00 to 17h00 only.  
Tel (+264-61) 202 2001 or (+264-61) 202 2167**



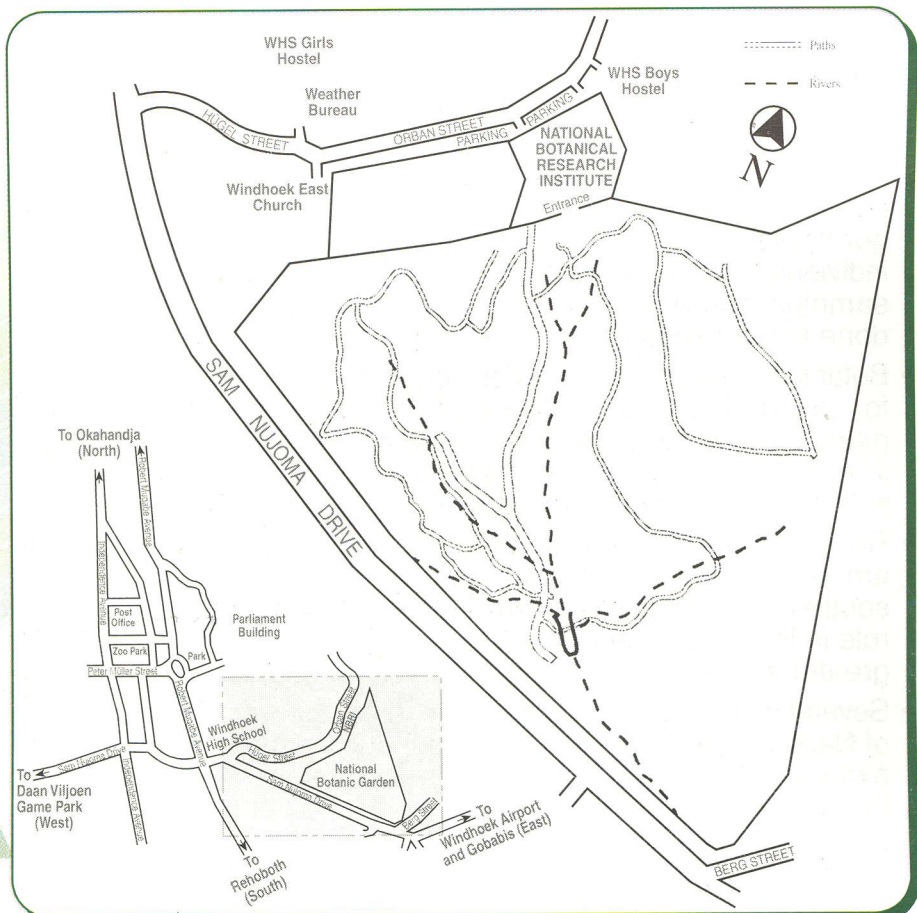
*A water feature constructed in the garden*

**PLEASE NOTE** The right of admission is reserved and an adult must accompany children under 12 years.

### As this is a proclaimed nature reserve, please:

- Stay on the paths
- Use the dustbins and refrain from littering
- Do not damage and/or remove plants or any plant material
- Do not disturb wildlife
- No climbing of trees
- No biking
- No fires
- No dogs
- Picnicking is only permitted at indicated spots
- No disturbances

**Take only  
photographs —  
Leave only  
footprints!**



*A map of the National Botanic Garden of Namibia*