

monitoring numbers and trends for a healthy conservancy...

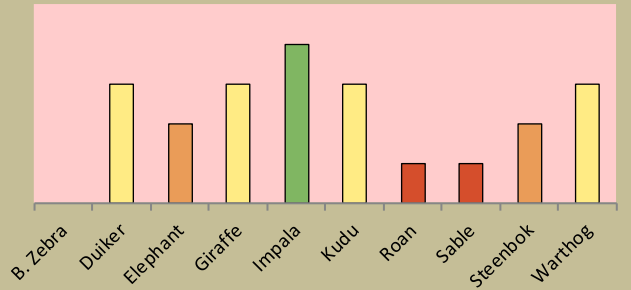
Current wildlife numbers and status

Species	Animals Seen	Estimate	Wildlife Status		
			Count Trend	Landscape Status	Desired Number
B. Zebra					
Duiker					
Elephant	8	8			
Giraffe	9				
Impala	31	31			
Kudu					
Roan					
Sable					
Steenbok					
Warthog					

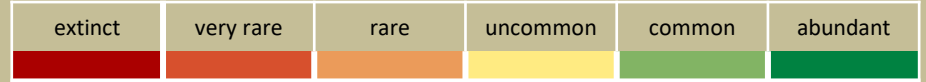
Desired Number – gives the species status in the conservancy based on what the conservancy would like to have.

dark green (abundant) – reduce a lot;
light green (common) – reduce a little;
yellow (uncommon) – keep numbers the same;
light orange (rare) – double numbers;
dark orange (very rare) – more than double numbers.

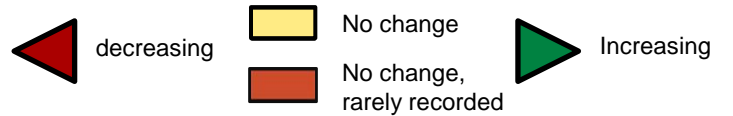
Wildlife status summary in 2019



Key to wildlife status

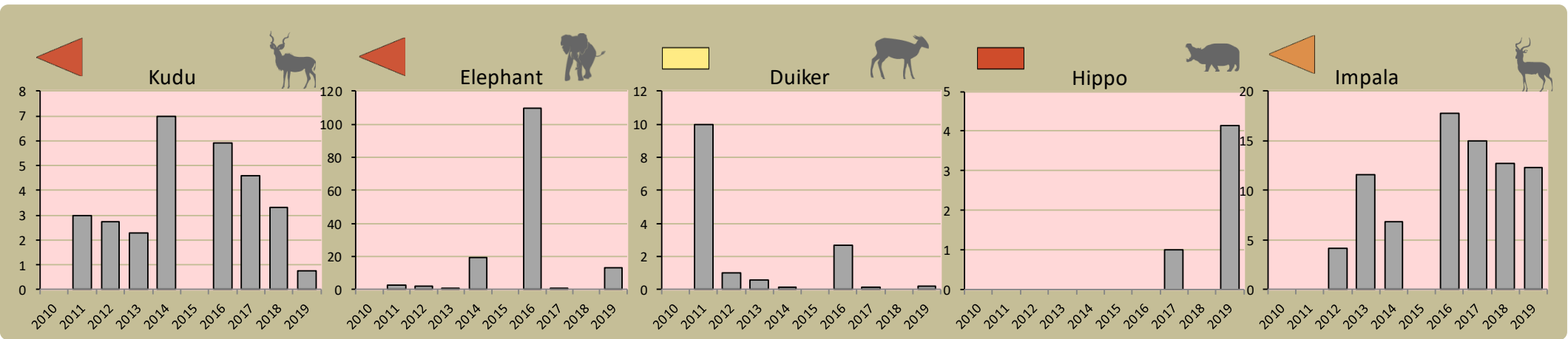


Flags

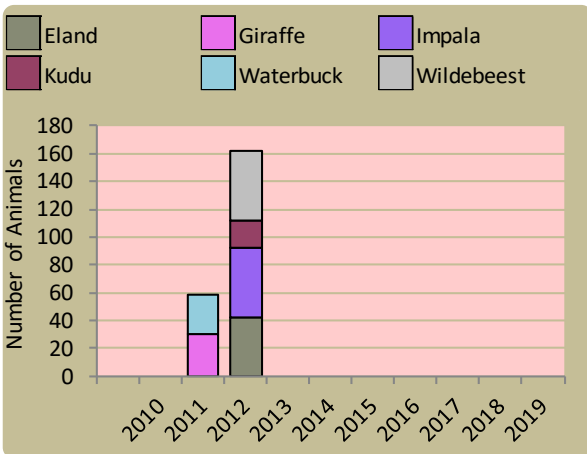


Fixed route patrols

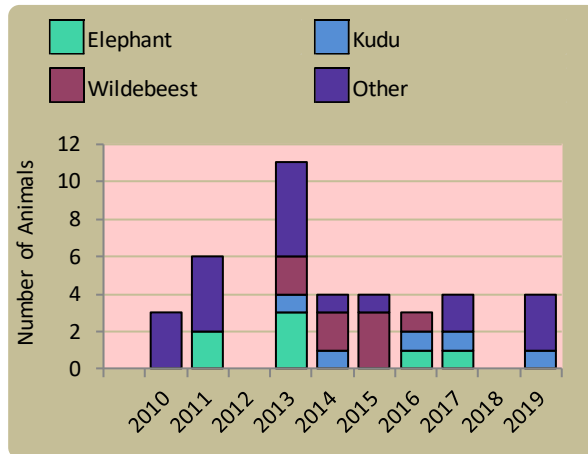
charts show the number of sightings of each species per fixed route foot patrol each year. Status flags reflect the general sightings trend over the last 5 years



Wildlife introductions

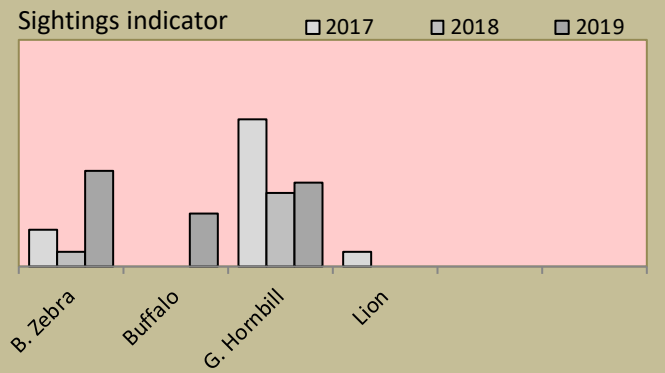


Wildlife mortalities

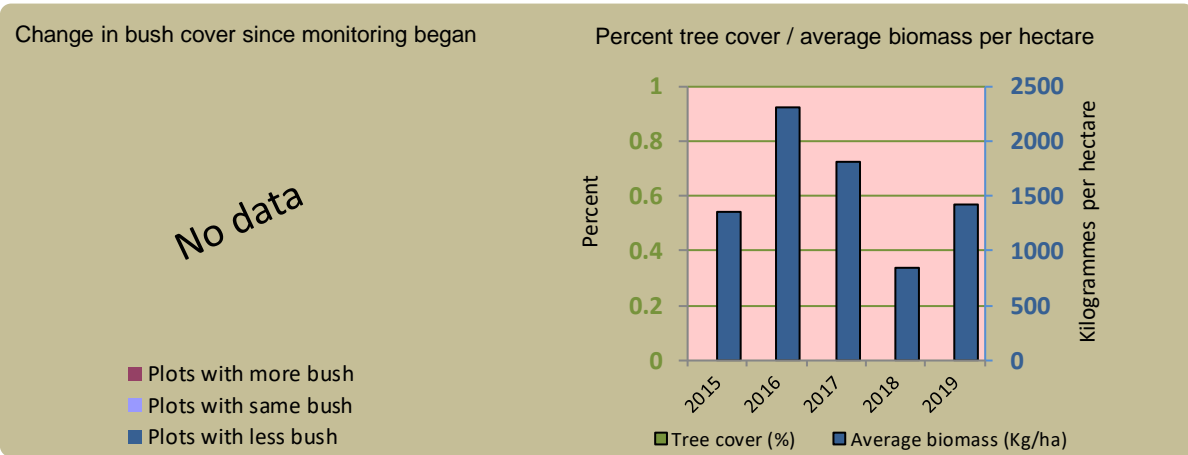


Locally rare species

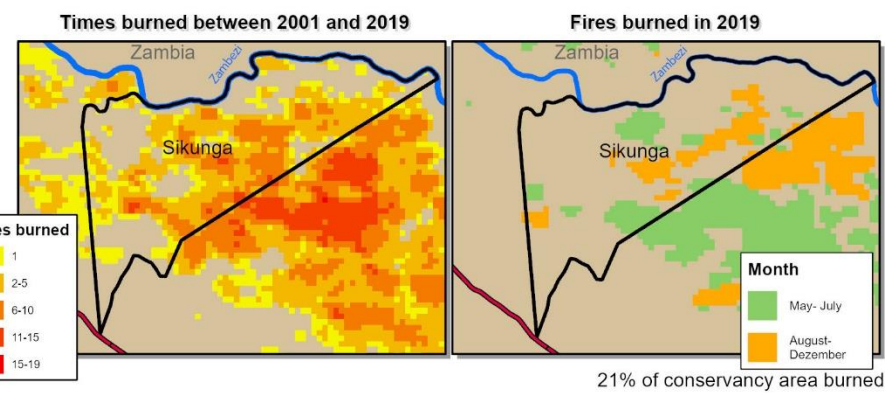
Locally rare and endangered species are not found very often in the conservancy and need special conservation attention.



Vegetation monitoring

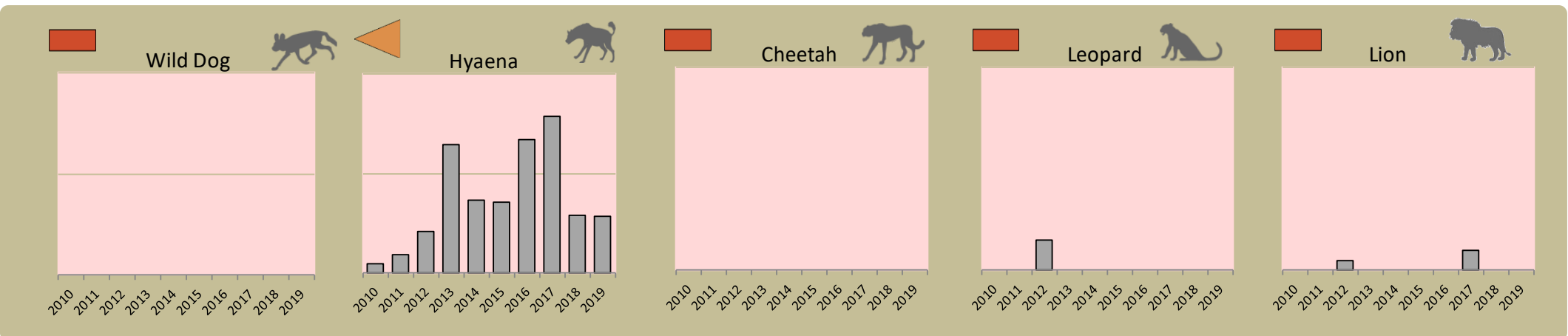


Fire monitoring



Predator monitoring

charts show the average number of animals seen per Event Book each year. Status flags reflect the general sightings trend over the last 5 years



Wildlife provides a wide range of benefits. Some wildlife can cause conflicts, but all wildlife is of value to tourism, trophy hunting and a healthy environment.

By using all the available information and adapting and improving activities, threats such as human wildlife conflict, poaching and other issues can be minimised.

Enabling wise conservancy governance...

Conservancy Statistics

Date Registered:	July 2009
Population (2011 census):	2470
Size (square kilometres):	287
Registered members:	2044

Key Compliance Requirements

Was an AGM held?	✓
Were elections held?	✓
Were benefits distributed according to the BDP?	✓
Is game managed according to the GMUP?	✓
Was the financial report presented and approved?	✓

Conservancy Governance

	Male	Female	Total
Number of management committee members	5	5	10
Attendance at AGM	56	98	154
Date of the last AGM:	22/11/2019		
Date of the next AGM:	19/11/2020		
Other important issues			
Budget approved?	✓		
Work plan approved?	✓		
Annual conservancy report approved?			

Benefit Distribution

Type	Description	Beneficiary	Number
Social Benefits	Electrification Project		
	Sports Sponsorship		
Meat Distribution	Meat To Members		

Employment

	Male	Female	Total
Conservancy staff (Incl. CGG & CRM)	19	3	22
Number of Community Game Guards	7	1	8
Number of Community Resource Monitors			
Lodge staff	39	31	70

Governance Performance Rating How well did the conservancy perform in the past year?

Performance Category	This Year	Prev. Year	Explanation of performance category
1 Member engagement	Strong		The conservancy is adequately engaging its members
2a Benefit planning	Exceptional		The conservancy developed its BDP in a transparent and participatory manner
2b Benefit distribution	Strong		The conservancy distributes benefits to its members in a fair, transparent and equitable manner
3 Accountability	Strong		Conservancy members are holding the management committee accountable
4 Compliance	Exceptional		The conservancy is compliant with the standard operating procedures (SOPs)
5 Stakeholder engagement	Exceptional		The conservancy maintains relationships with key external stakeholders
6 Financial management	Strong		The conservancy is effectively managing its finances

Colour codes:

none

weak

moderate

strong

exceptional

N/A