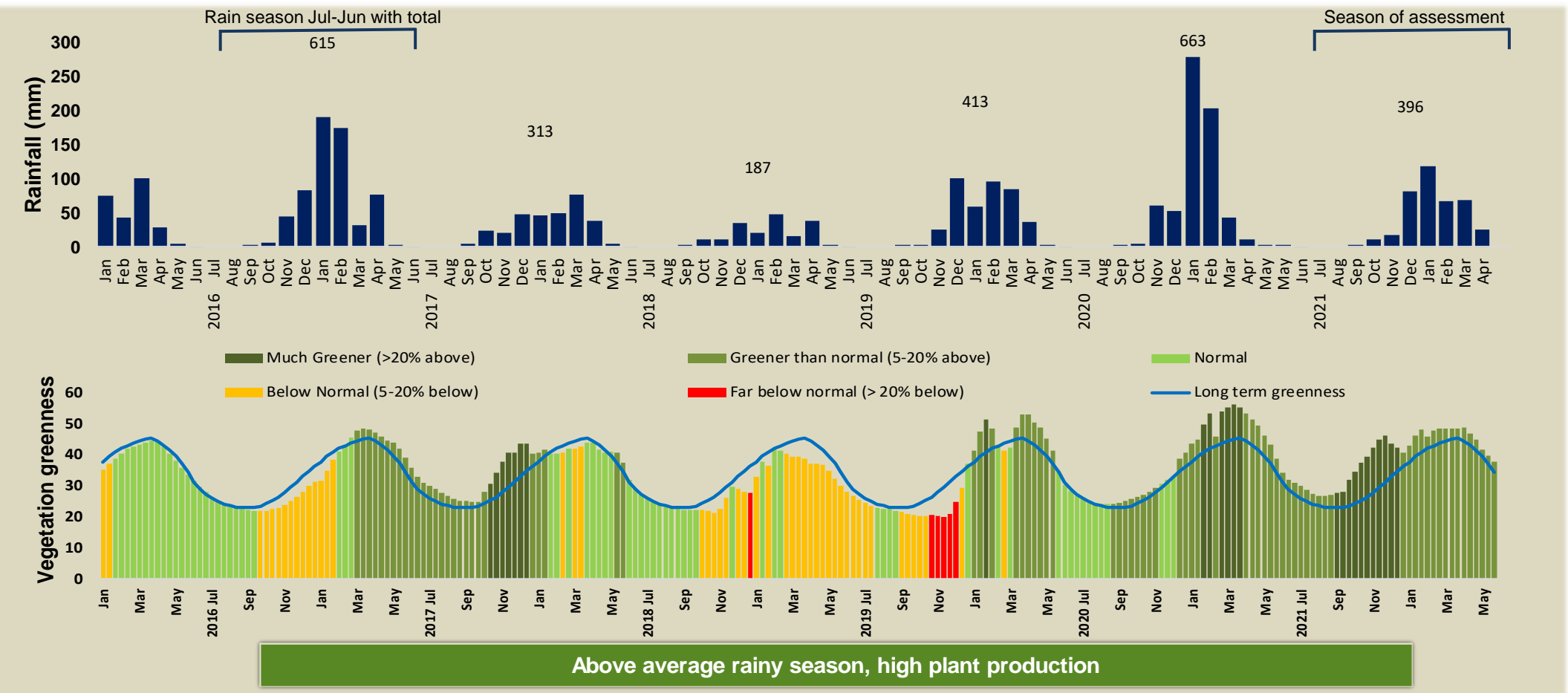


Otjombinde Climate and Vegetation Report

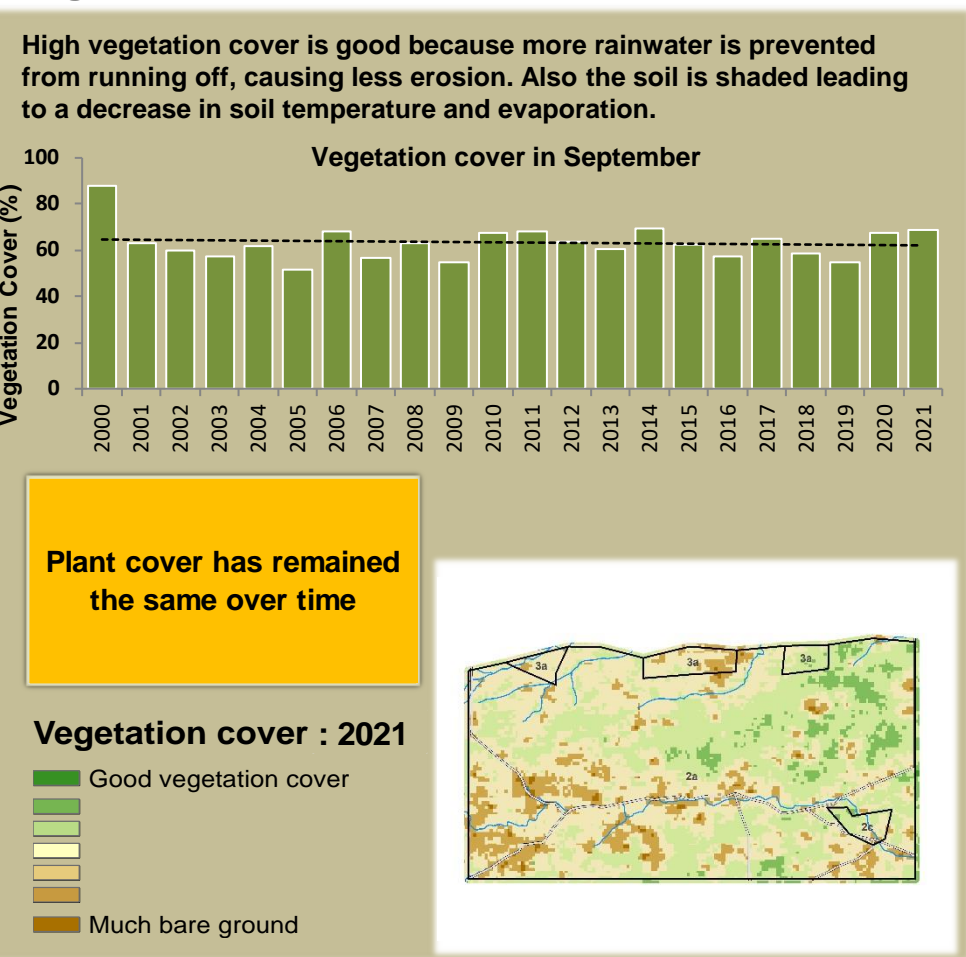


Adapting in response to the current environmental conditions ...

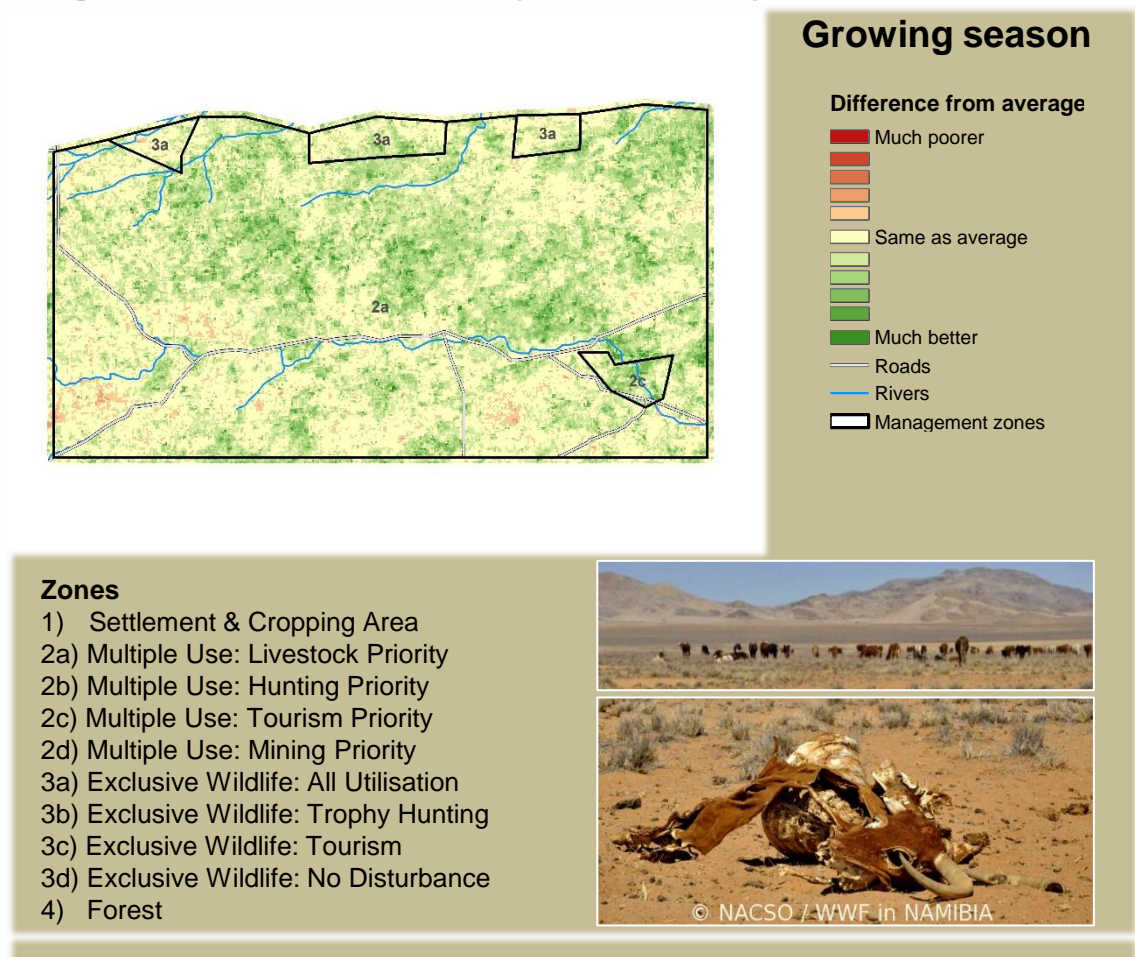
Seasonal trends in rainfall and vegetation (2021 / 2022 Season)



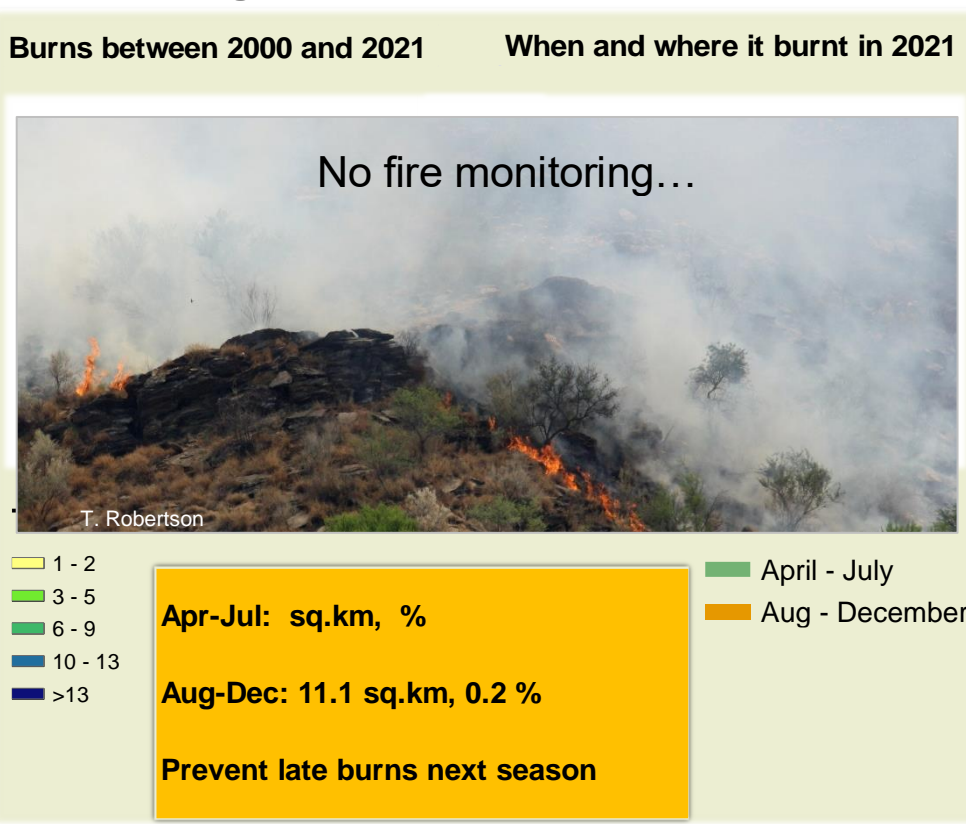
Vegetation cover trend (2000 - 2021)



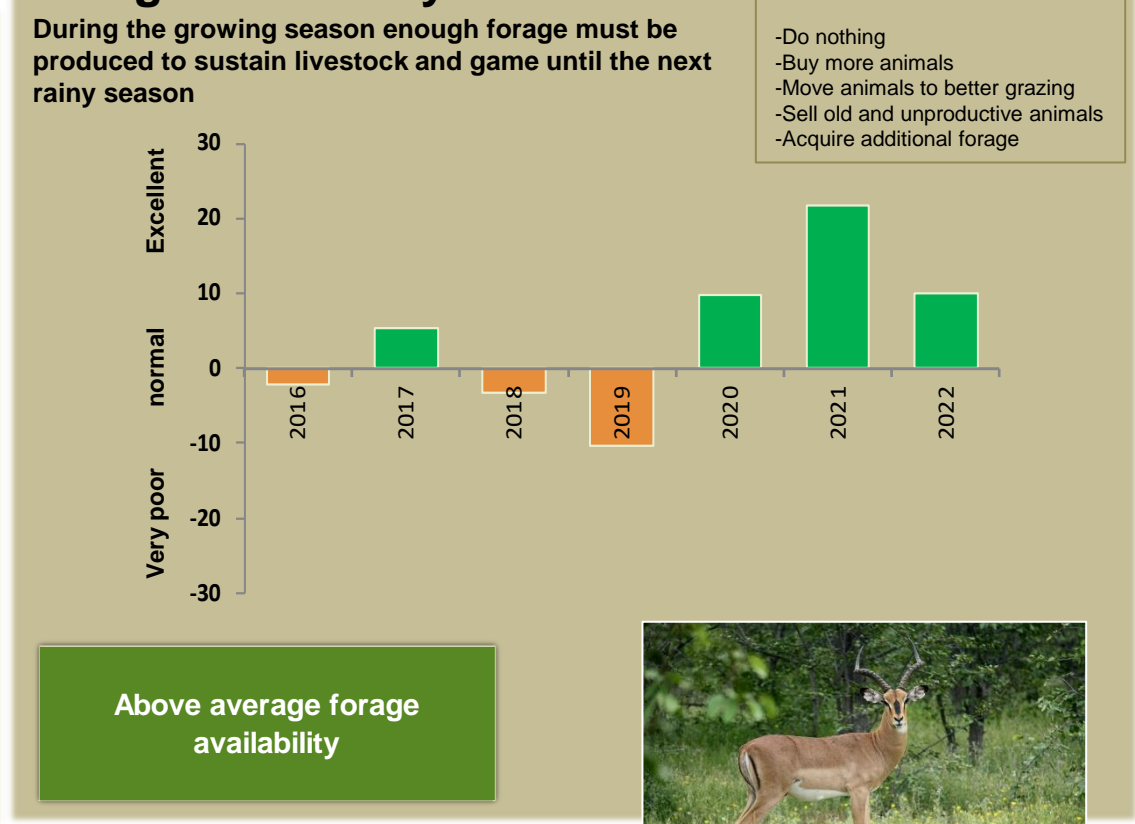
Vegetation productivity (February to April) 2022



Fire management



Forage availability



Climate and vegetation patterns assist in our understanding of the status of wildlife and livestock in the conservancy for the effective management of these resources.