

monitoring numbers and trends for a healthy conservancy...

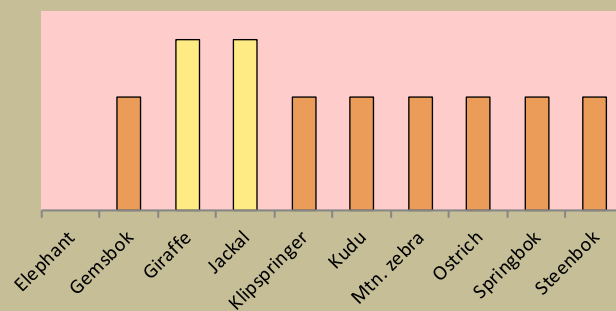
Current wildlife numbers and status

Species	Animals Seen 2019	Estimated population range	Wildlife Status		
			Count Trend	National Guideline	Desired Status
Elephant				Yellow	
Gemsbok				Orange	
Giraffe				Yellow	
Jackal				Yellow	
Klipspringer				Orange	
Kudu				Orange	
Mtn. zebra				Orange	
Ostrich				Orange	
Springbok				Orange	
Steenbok				Orange	

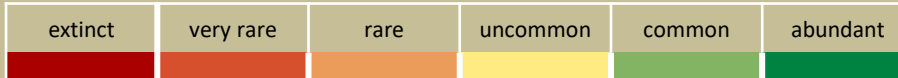
Desired Number – gives the species status in the conservancy based on what the conservancy would like to have.

dark green (abundant) – reduce a lot;
light green (common) – reduce a little;
yellow (uncommon) – keep numbers the same;
light orange (rare) – double numbers;
dark orange (very rare) – more than double numbers.

Wildlife status summary in 2019

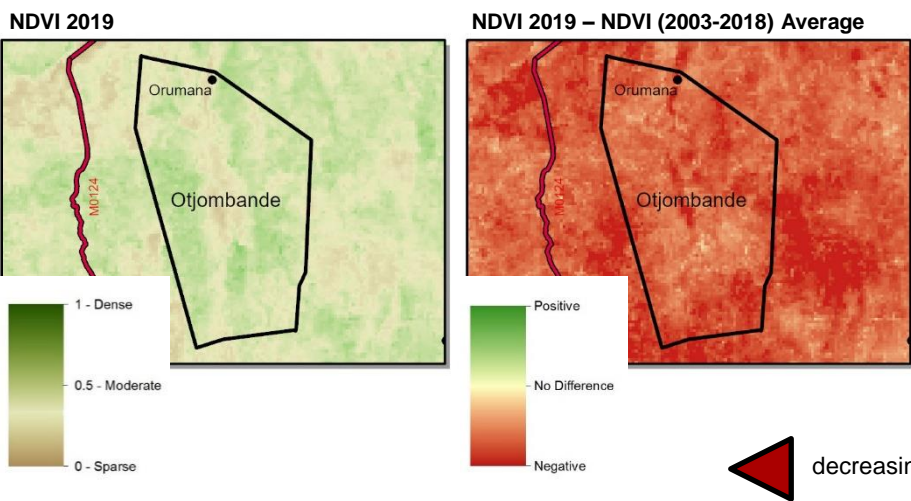


Key to wildlife status

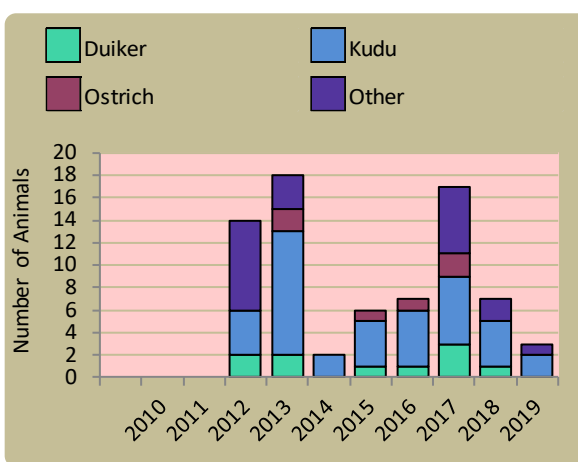


Vegetation monitoring

Green vegetation index (NDVI). Maps show vegetation cover during Feb-Apr of the current year and the difference between the current year and the long-term average (2003-2018)



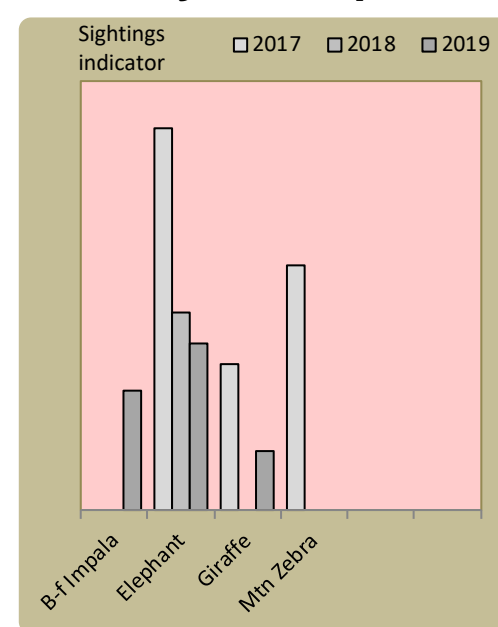
Wildlife mortalities



Flags



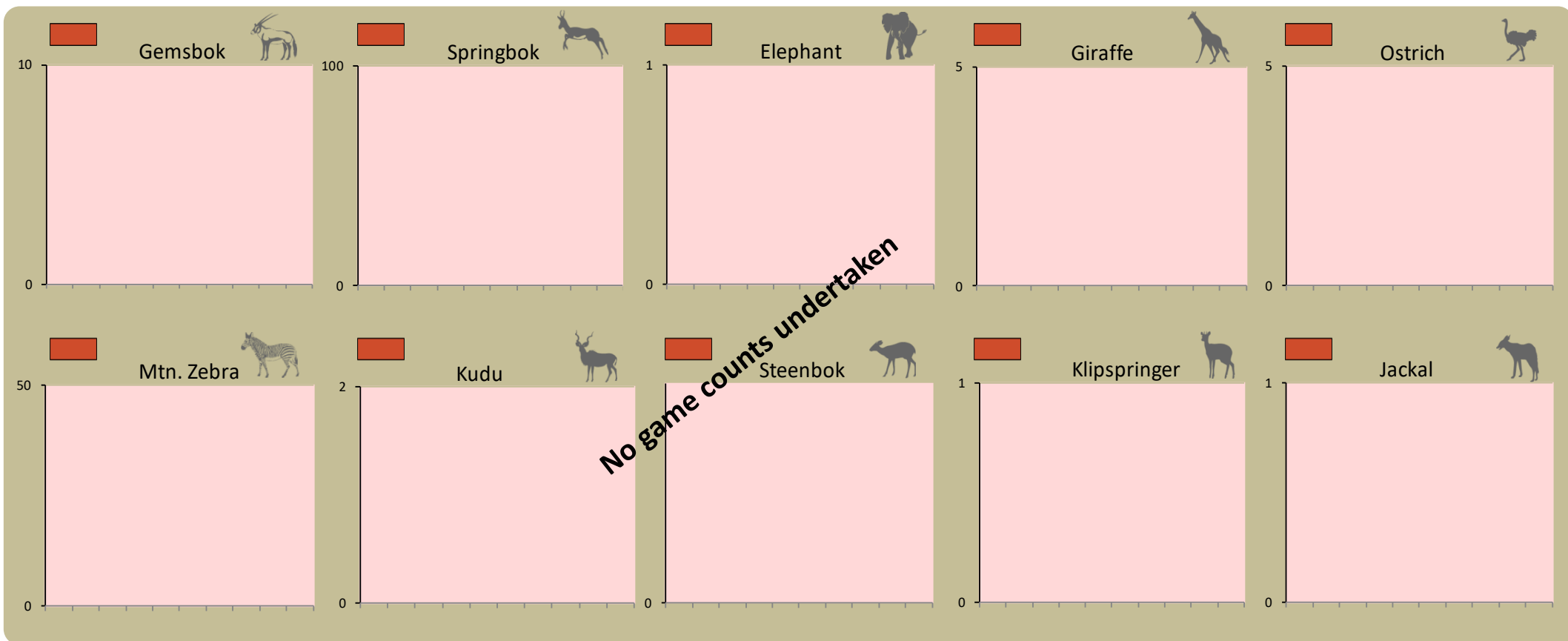
Locally rare species



Locally rare species are not found very often in the conservancy and need special conservation attention.

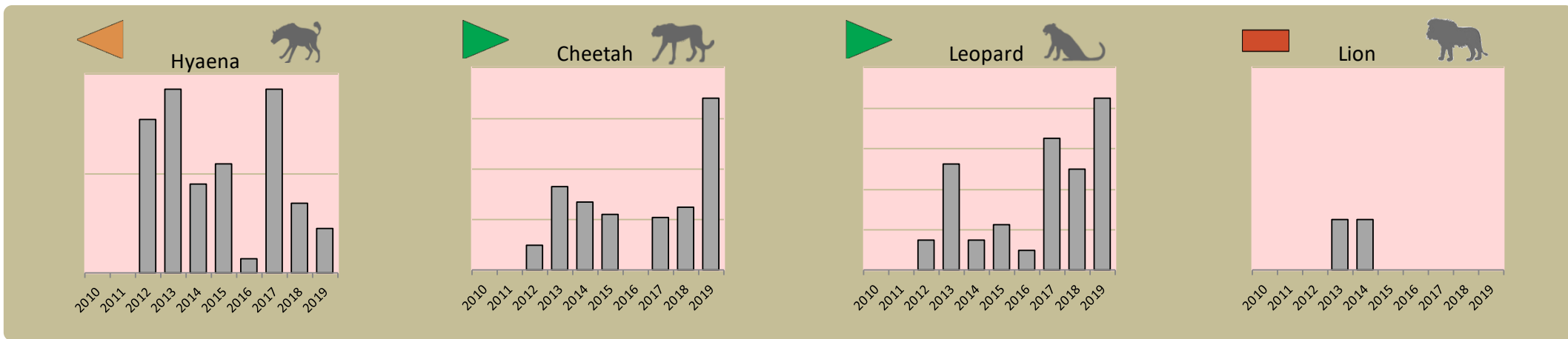
Annual game count

Charts show the number of animals seen each year per 100 km driven during the game count. As a point of reference the dashed horizontal line represents the combined 10 year average in Palmwag and Etendeka concessions. Status flags reflect the general count trend over the last 5 years.



Predator monitoring

charts show the average number of animals seen per Event Book each year status barometers reflect the general sightings trend over the last 5 years



Wildlife provides a wide range of benefits. Some wildlife can cause conflicts, but all wildlife is of value to tourism, trophy hunting and a healthy environment.

By using all the available information and adapting and improving activities, threats such as human wildlife conflict, poaching and other issues can be minimised.

Enabling wise conservancy governance...

Conservancy Statistics

Date Registered:	February 2012
Population (2011 census):	1250
Size (square kilometres):	329
Registered members:	356

Key Compliance Requirements

Was an AGM held?	✓
Were elections held?	N/A
Were benefits distributed according to the BDP?	✓
Is game managed according to the GMUP?	✓
Was the financial report presented and approved?	✓

Conservancy Governance

	Male	Female	Total
Number of management committee members	8	3	11
Attendance at AGM	35	53	88
Date of the last AGM:	30/11/2019		
Date of the next AGM:			
Other important issues			
Budget approved?	✓		
Work plan approved?	✓		
Annual conservancy report approved?			

Benefit Distribution

Type	Description	Beneficiary	Number
Social Benefits	Funeral	Households	1

Employment

	Male	Female	Total
Conservancy staff (Incl. CGG & CRM)	4		4
Number of Community Game Guards	4		4
Number of Community Resource Monitors			

Governance Performance Rating How well did the conservancy perform in the past year?

Performance Category	This Year	Prev. Year	Explanation of performance category
1 Member engagement	Strong		The conservancy is adequately engaging its members
2a Benefit planning	Exceptional		The conservancy developed its BDP in a transparent and participatory manner
2b Benefit distribution	Strong		The conservancy distributes benefits to its members in a fair, transparent and equitable manner
3 Accountability	Strong		Conservancy members are holding the management committee accountable
4 Compliance	Exceptional		The conservancy is compliant with the standard operating procedures (SOPs)
5 Stakeholder engagement	Exceptional		The conservancy maintains relationships with key external stakeholders
6 Financial management	Weak		The conservancy is effectively managing its finances

Colour codes:

none

weak

moderate

strong

exceptional

N/A