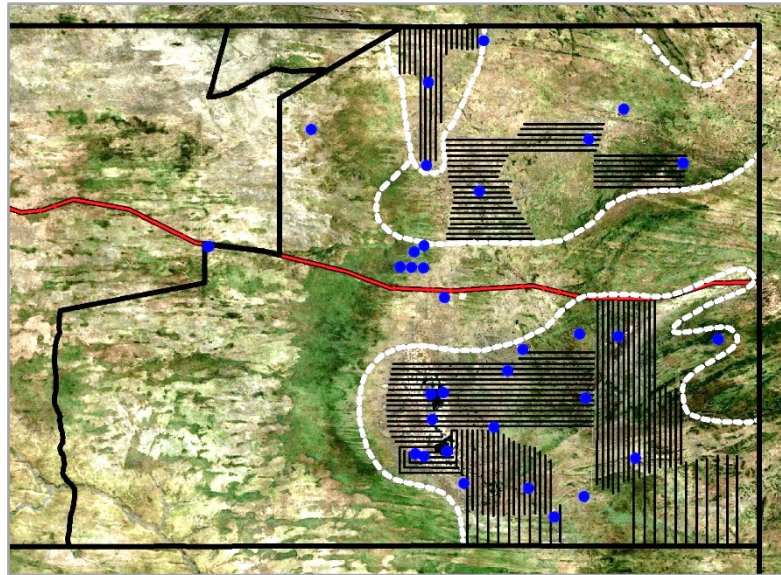


# GAME COUNTS – LINE TRANSECTS

## NYAE NYAE CONSERVANCY July 2020

### Line Transects:

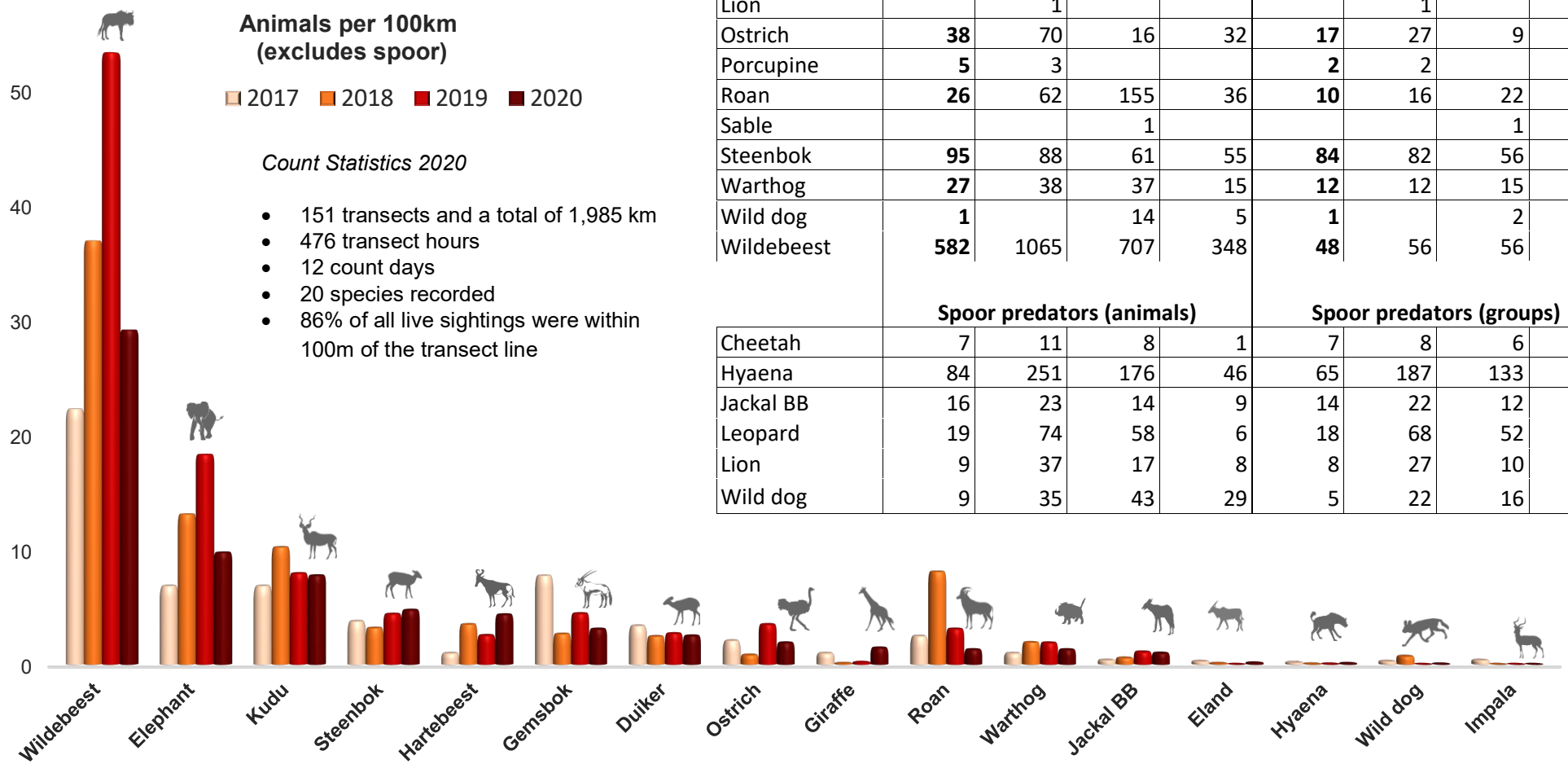


### Animals seen

Species	Animals Seen				Groups seen			
	2020	2019	2018	2017	2020	2019	2018	2017
African Wild Cat		1				1		
Bat-eared fox	2				1			
Duiker	50	54	47	51	48	53	44	48
Eland	3		2	5	1		2	1
Elephant	195	366	251	91	63	70	68	39
Gemsbok	62	89	51	120	28	25	17	22
Giraffe	29	4	2	16	5	3	1	4
Hartebeest	87	51	67	16	9	7	8	3
Honey Badger	1	1			1	1		
Hyaena	2	1	1	2	2	1	1	2
Impala				6				2
Jackal BB	20	22	11	6	17	10	8	6
Kudu	155	159	196	108	44	49	50	33
Leopard	1	1			1	1		
Lion		1				1		
Ostrich	38	70	16	32	17	27	9	13
Porcupine	5	3			2	2		
Roan	26	62	155	36	10	16	22	9
Sable			1				1	
Steenbok	95	88	61	55	84	82	56	55
Warthog	27	38	37	15	12	12	15	7
Wild dog	1		14	5	1		2	2
Wildebeest	582	1065	707	348	48	56	56	30

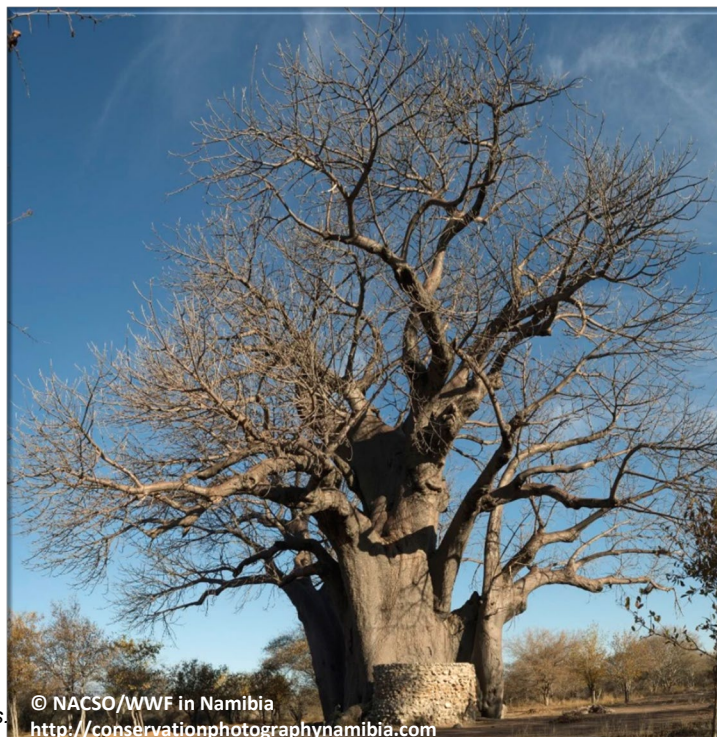
Species	Spoor predators (animals)				Spoor predators (groups)			
	2020	2019	2018	2017	2020	2019	2018	2017
Cheetah	7	11	8	1	7	8	6	1
Hyaena	84	251	176	46	65	187	133	42
Jackal BB	16	23	14	9	14	22	12	8
Leopard	19	74	58	6	18	68	52	6
Lion	9	37	17	8	8	27	10	6
Wild dog	9	35	43	29	5	22	16	6



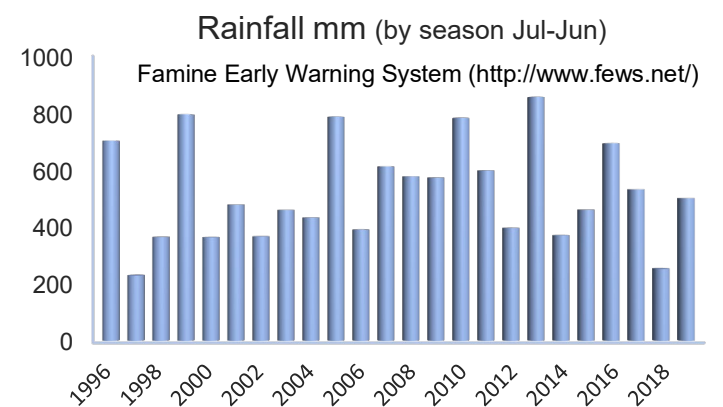
### Estimates

Species	Estimate	95% CL Low	95% CL High	Model
Duiker	1,370	950	1,970	HN
Elephant	730	510	1,050	HN
Gemsbok	430	255	730	HN
Giraffe	100	30	345	U
Hartebeest	430	180	1,020	U
Kudu	1,100	740	1,635	HN
Ostrich	265	145	490	HN
Roan	240	125	470	U
Steenbok	1,895	1,430	2,500	HN
Warthog	95	50	180	U
Wildebeest	2,655	1,610	4,370	HN

Estimates (rounded) were derived using DISTANCE analysis which takes account of drop-off in animal detectability with distance from the transect line. Eleven species had sufficient sightings to adequately derive species detection curves and therefore produce estimates. Model: U=uniform; HN=half normal.



© NACSO/WWF in Namibia  
http://conservationphotographyinamibia.com



### Synopsis

Line transects were started in 2017 and represent almost half of the total area of the conservancy and include most of the waterholes. The area not covered by transects has low animal densities due to reduced habitat suitability and people pressure.

Transect counts have recorded 23 species including 6 predator species. Based on average spoor sightings hyaena are the most common predator, followed by leopard and wild dog.

The top 3 species in terms of sightings between 2017 and 2020 included wildebeest, elephant and kudu.