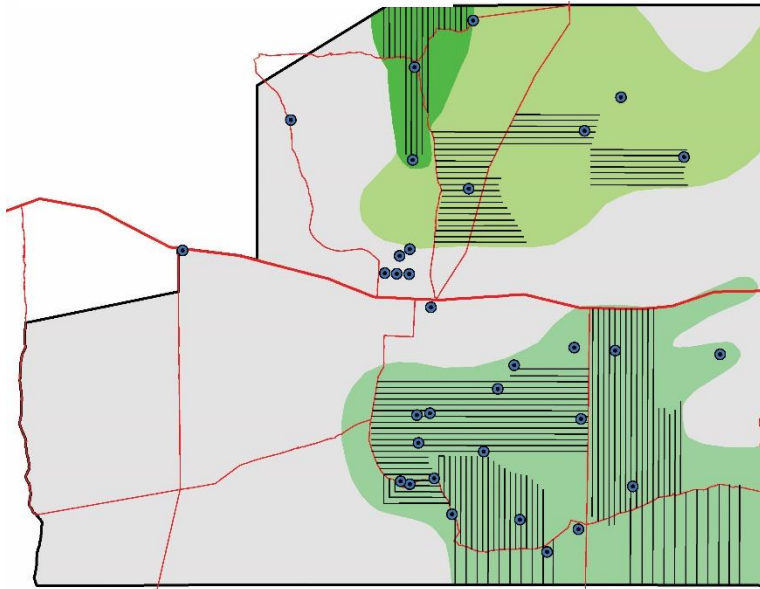


GAME COUNTS – LINE TRANSECTS

NYAE NYAE CONSERVANCY

Jul/Aug 2019

Line Transects:

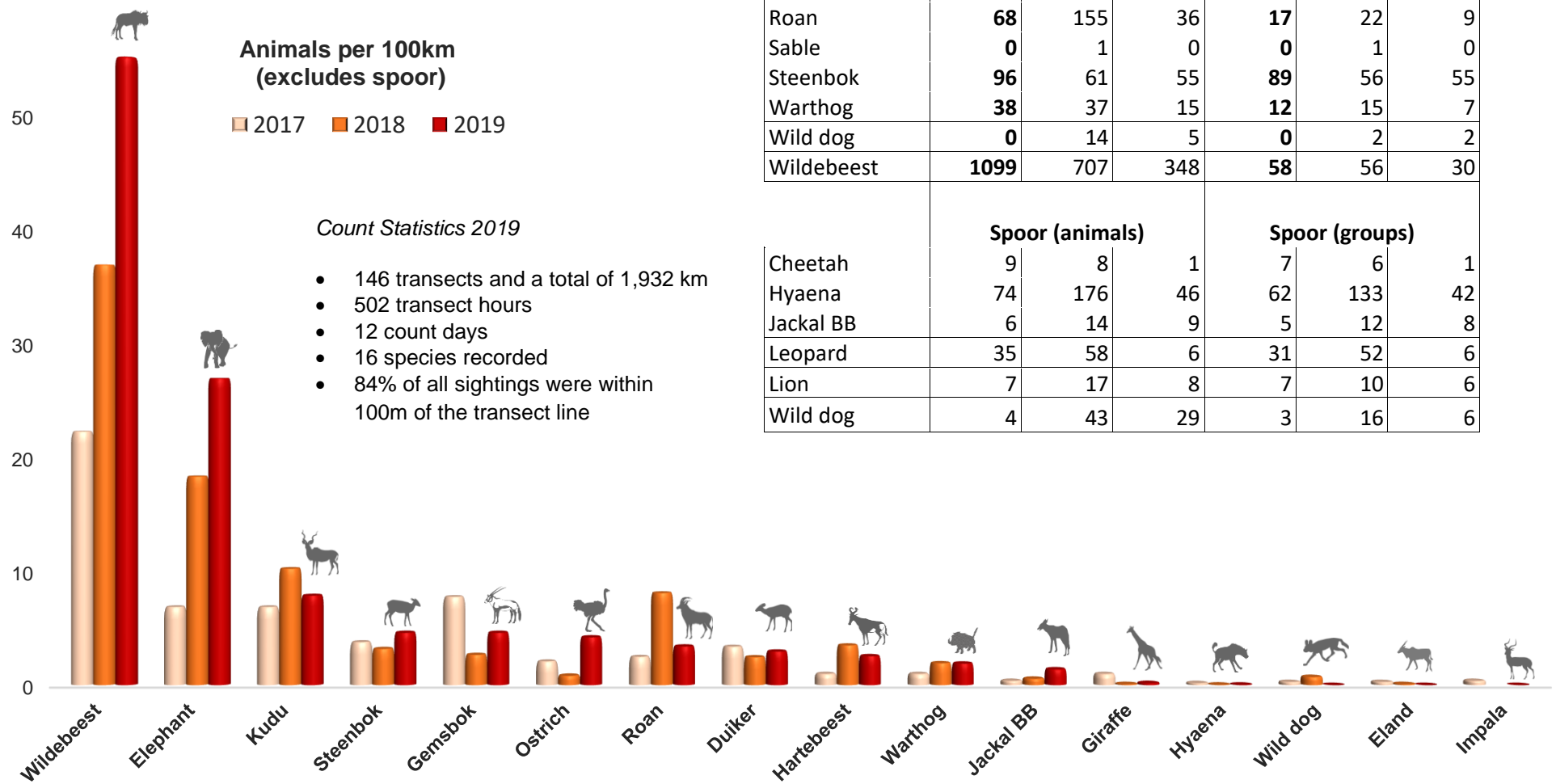


Area represented = 420,000 ha.

Animals seen

Species	Animals Seen			Groups seen		
	2019	2018	2017	2019	2018	2017
African Wild Cat	1	0	0	1	0	0
Duiker	59	47	51	58	44	48
Eland	0	2	5	0	2	1
Elephant	537	251	91	75	68	39
Gemsbok	92	51	122	25	17	23
Giraffe	4	2	16	3	1	4
Hartebeest	51	67	16	7	8	3
Hyaena	1	1	2	1	1	2
Impala	0	0	6	0	0	2
Jackal BB	28	11	6	12	8	6
Kudu	157	196	108	50	50	33
Lion	1	0	0	1	0	0
Ostrich	84	16	32	30	9	13
Porcupine	4	0	0	3	0	0
Roan	68	155	36	17	22	9
Sable	0	1	0	0	1	0
Steenbok	96	61	55	89	56	55
Warthog	38	37	15	12	15	7
Wild dog	0	14	5	0	2	2
Wildebeest	1099	707	348	58	56	30

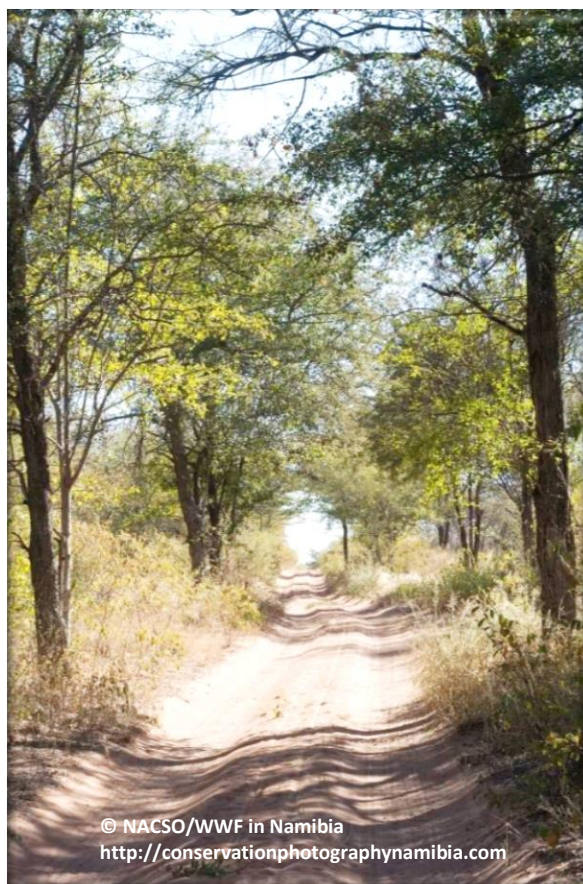
Species	Spoor (animals)			Spoor (groups)		
	2019	2018	2017	2019	2018	2017
Cheetah	9	8	1	7	6	1
Hyaena	74	176	46	62	133	42
Jackal BB	6	14	9	5	12	8
Leopard	35	58	6	31	52	6
Lion	7	17	8	7	10	6
Wild dog	4	43	29	3	16	6



Estimates

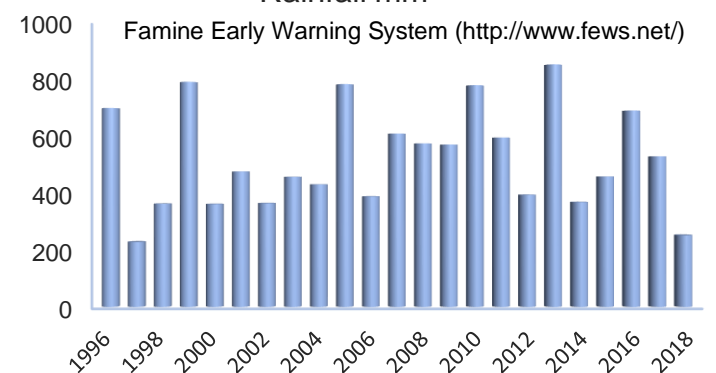
Species	Estimate	95% CL Low	95% CL High	Model
Duiker	1,030	660	1,620	HN
Elephant	2,070	1,280	3,350	HN
Gemsbok	680	365	1,280	HN
Hartebeest	300	140	750	U
Kudu	1,455	980	2,160	HN
Ostrich	280	145	540	U
Roan	650	320	1,300	U
Steenbok	2,195	1,590	3,035	HN
Warthog	185	100	350	U
Wildebeest	5,185	3,280	8,200	U

Estimates (rounded) were derived using DISTANCE analysis which takes account of drop-off in animal detectability with distance from the transect line. Ten species had sufficient sightings to adequately derive species detection curves and therefore produce estimates. Model: U=uniform; HN=half normal.



© NACSO/WWF in Namibia
http://conservationphotographynamibia.com

Rainfall mm



Synopsis

Line transects were started in 2017 and represent almost half of the total area of the conservancy and include most of the waterholes. The area not covered by transects has low animal densities due to reduced habitat suitability and people pressure.

Transect counts have recorded 22 species including 6 predator species. Based on spoor sightings hyaena are the most common predator, followed by leopard and wild dog.

The top 3 species in terms of sightings between 2017 and 2019 included wildebeest, elephant and kudu.