

## Conservancy status

the chart shows the main benefit sources and values and their percentage of the total benefits

Benefit Category	Amount (N\$)	Percentage (%)
Combined tourism benefits	N\$ 0	0 %
Combined hunting benefits	N\$ 78,850	44 %
Veld product benefits	N\$ 9,400	5 %
Other benefits (e.g. interest)	N\$ 90,600	51 %

**Two of the most significant benefits for the conservancy:**

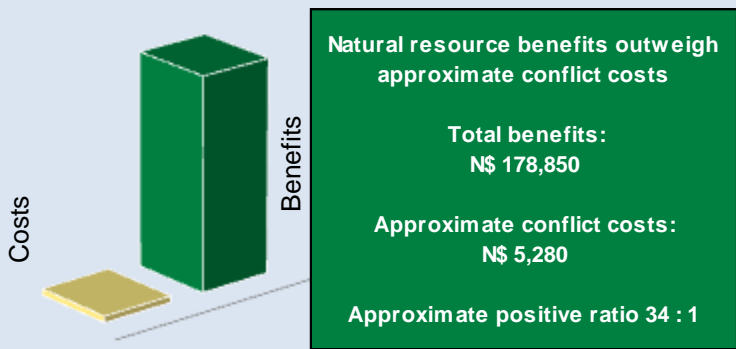
- ✓ cash income to the conservancy to cover running costs and invest in developments
- ✓ employment benefits to conservancy residents

Conservancy income			N\$ 178,850
Employment benefits	Private Sector		
	Conservancy	11 staff	N\$ 61,780

estimates are based on average national values

Estimated human wildlife conflict cost	N\$ 5,280
Estimated poached high value species loss	N\$ 0
<b>Total conflict cost estimate</b>	<b>N\$ 5,280</b>

the chart shows the approximate ratio of benefits to costs

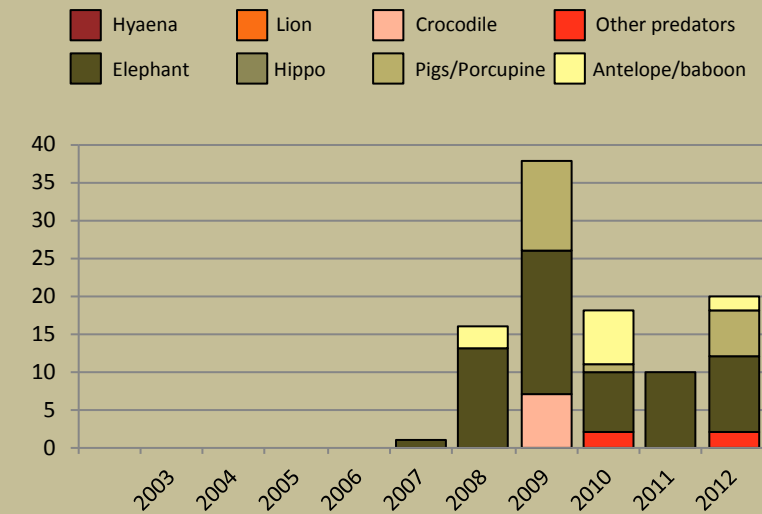


\* The annual data collection process results in a lag of 1 year for income data \*

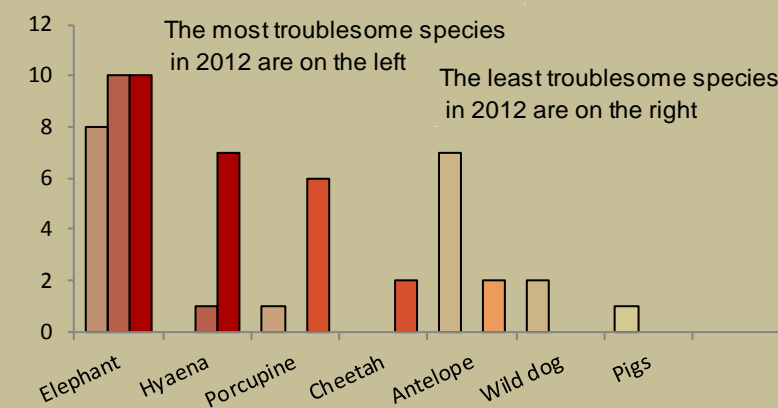
Category	Score	Performance		
1 Adequate staffing	2			
2 Adequate expenditure	2			
3 Audit attendance	5			
4 NR management plan	2			
5 Zonation	3			
6 Leadership	2			
7 Display of material	2			
8 Event Book modules	4			
9 Event Book quality	2			
10 Compliance	2			
11 Game census	2			
12 Reporting & adaptive m/ment	1			
13 Law enforcement	2			
14 Human Wildlife Conflict	3			
15 Sources of NR income	2			
16 Benefits produced	3			
17 Resource Sustainability	3			

Animal	Number of Sightings
B. Zebra	2
Duiker	4
Elephant	10
Giraffe	4
Impala	2
Kudu	10
Roan	4
Sable	2
Steenbok	10
Warthog	4

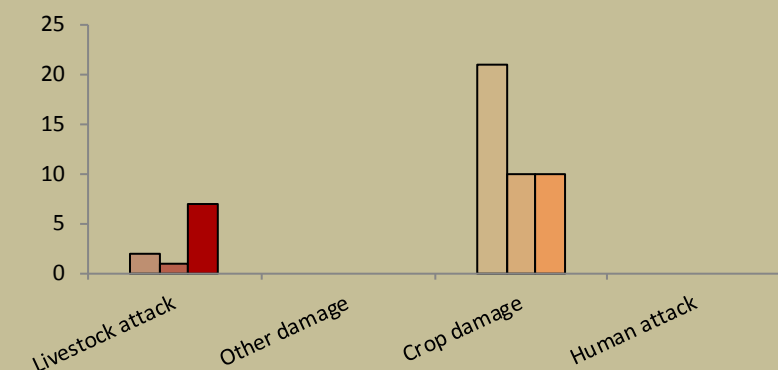
the chart shows the total number of incidents each year, subdivided by species, grouped as herbivores and predators



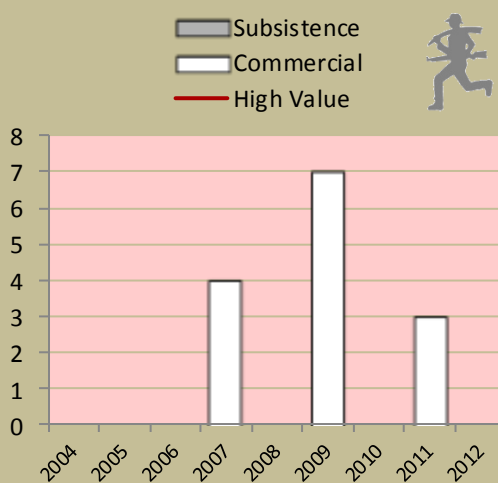
the chart shows the number of incidents per species for the last 3 years;  
the darkest bar (on the right) indicates the current year for each species



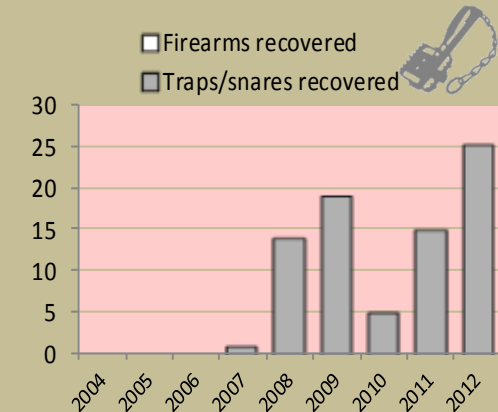
the chart shows the number of incidents per category for the last 3 years; the darkest bar (on the right) indicates the current year for each type



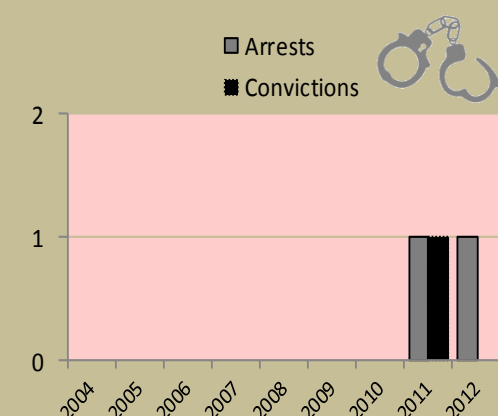
Commercial poaching is a serious threat to conservancy benefits. The chart shows the number of incidents per category



number of incidents per category



## number of incidents per category

[illegible]

- **Potential trophy value** - the average national trophy value of each trophy species multiplied by the quota number
- **Potential other use value** - the average national meat value of each common species multiplied by the quota number
  - the average live sale value of each high value species (indicated with an \*) multiplied by the quota number
  - high value species are never used for meat

## Wildlife status

extinct      very rare      rare      uncommon      common      abundant

weak/bad                      reasonable

**Management performance & other data**

success/  
benefit created

weakness/  
action needed

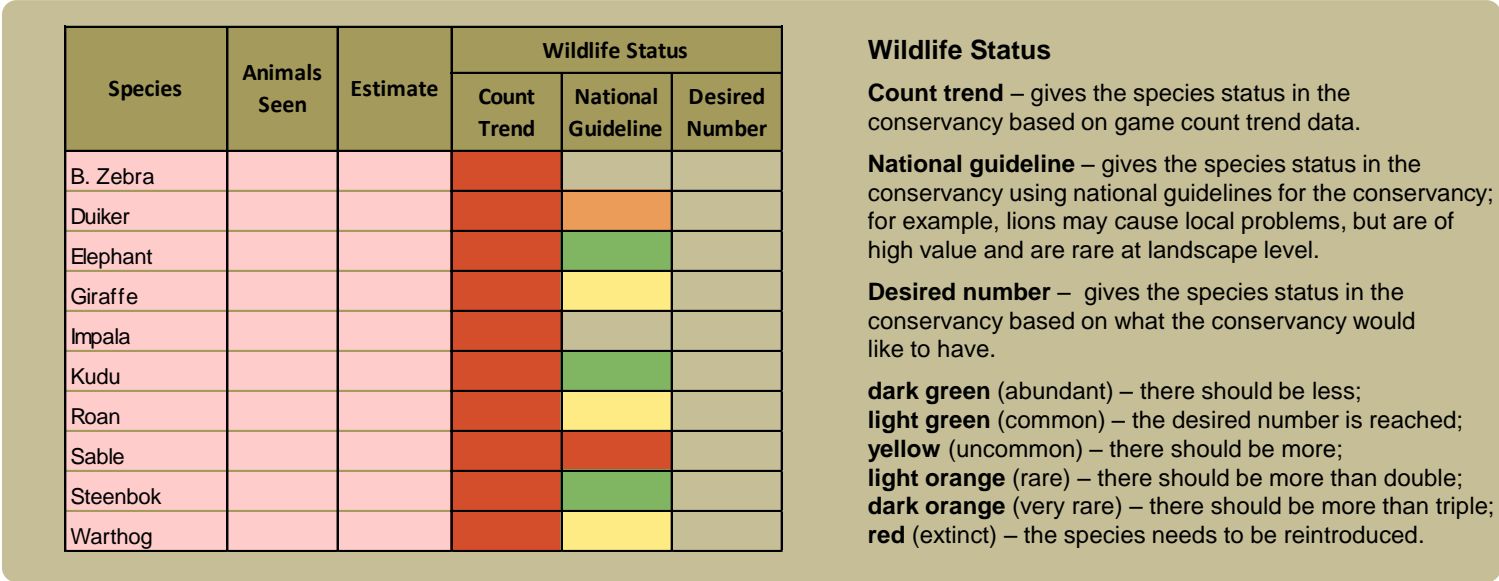
**Conservancies reduce environmental costs while increasing environmental benefits. Benefits from wildlife can far outweigh human wildlife conflict costs.**



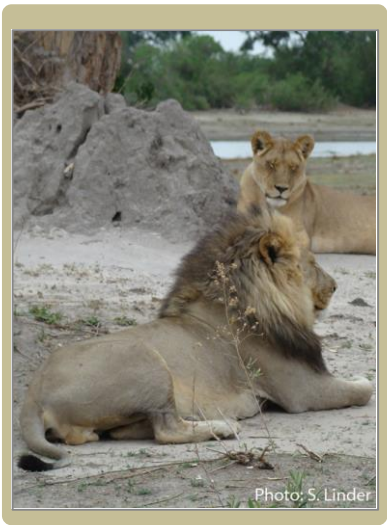
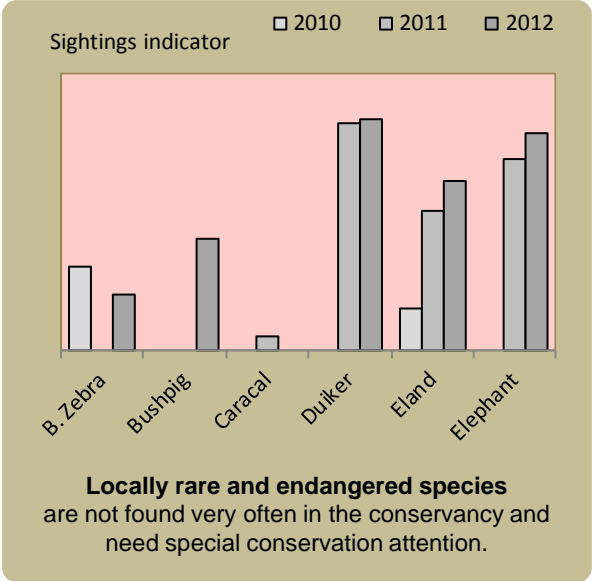


# monitoring numbers and trends for a healthy conservancy...

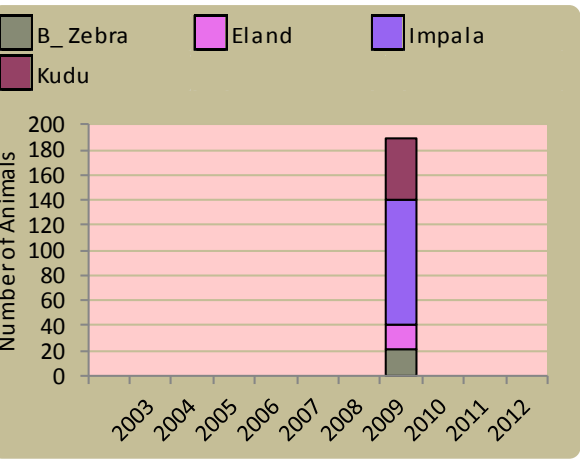
## Current wildlife numbers and status



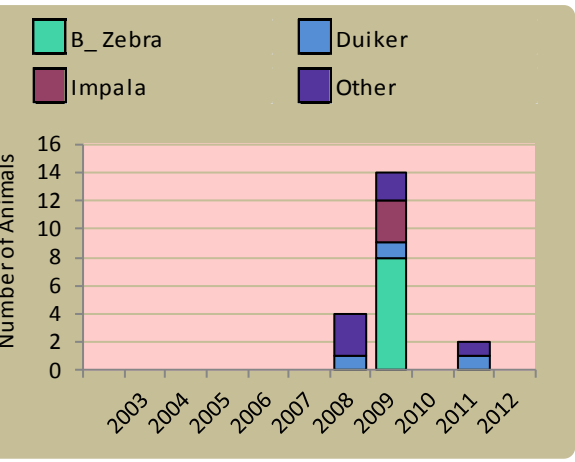
## Locally rare species



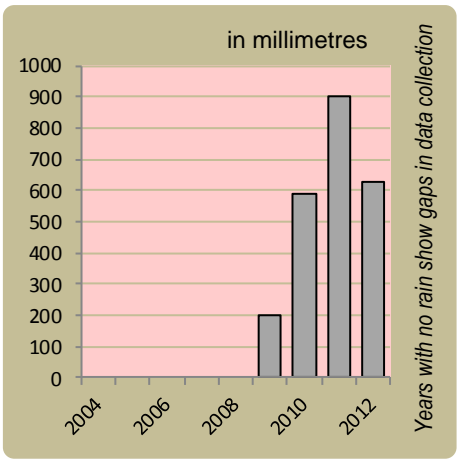
## Wildlife introductions



## Wildlife mortalities

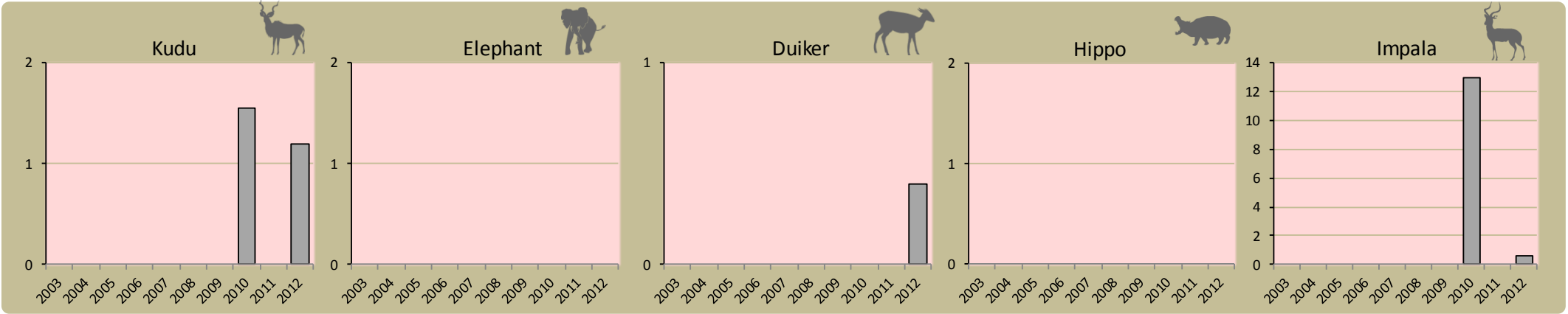


## Annual rainfall



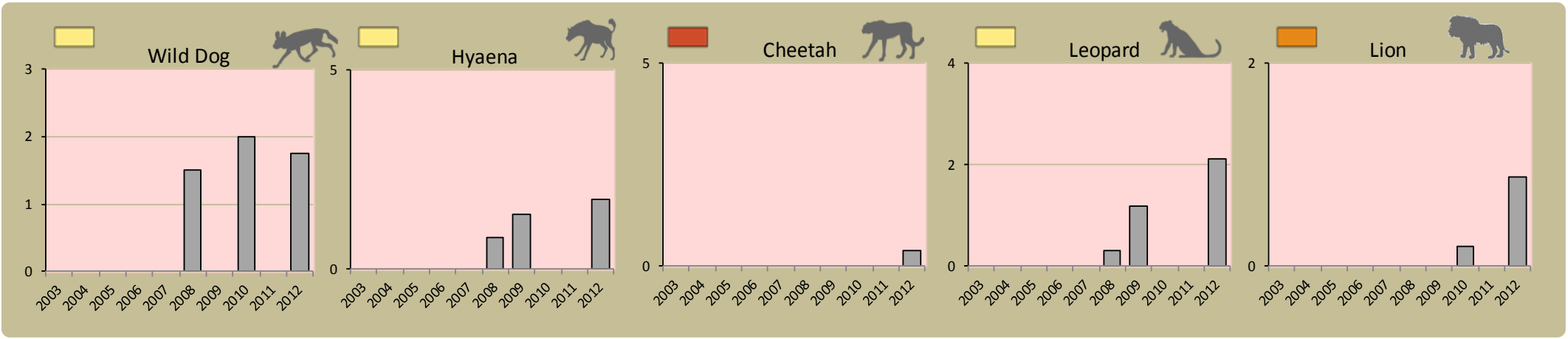
## Fixed route patrols

charts show the number of sightings of each species per fixed route foot patrol each year

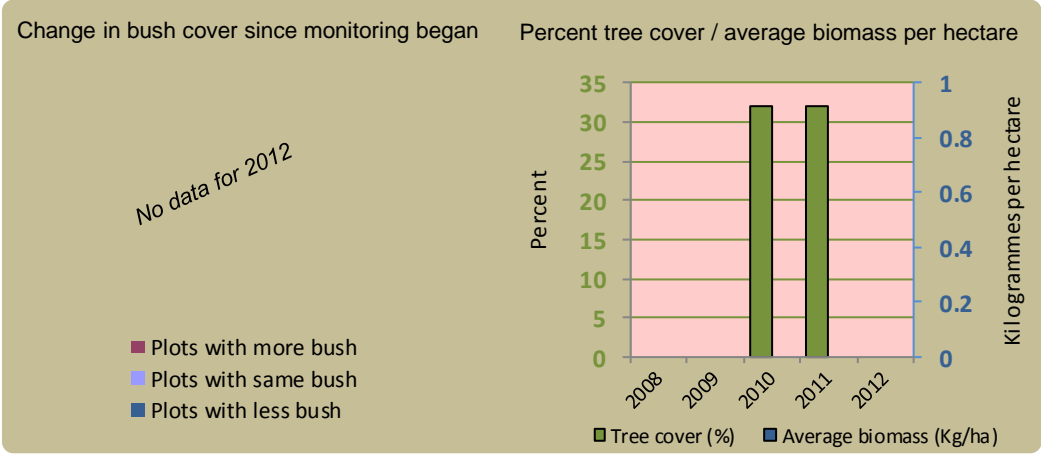


## Predator monitoring

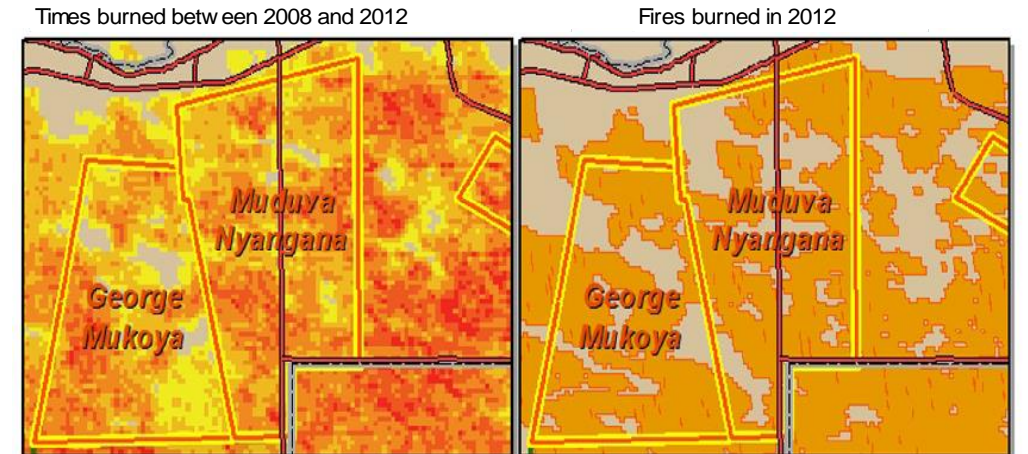
charts show the average number of animals seen per Event Book each year  
status barometers reflect the general sightings trend over the last 5 years



## Vegetation monitoring



## Fire monitoring



Wildlife provides a wide range of benefits. Some wildlife can cause conflicts, but all wildlife is of value to tourism, trophy hunting and a healthy environment.



By using all the available information and adapting and improving activities, threats such as human wildlife conflict, poaching and other issues can be minimised.

