

Conservancy status

the chart shows the main benefit sources and values and their percentage of the total benefits

Benefit Category	Amount (N\$)	Percentage (%)
Combined tourism benefits	1,921,180	85 %
Combined hunting benefits	259,560	11 %
Veld product benefits	0	0 %
Other benefits (e.g. interest)	77,250	3 %

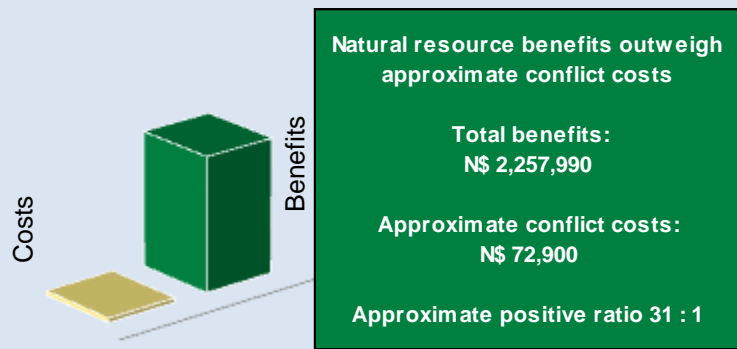
- ✓ cash income to the conservancy to cover running costs and invest in developments
- ✓ employment benefits to conservancy residents

Conservancy income			N\$ 356,190
Employment benefits	Private Sector	66 staff	N\$ 1,275,980
	Conservancy	12 staff	N\$ 132,990

estimates are based on average national values

Estimated human wildlife conflict cost	N\$ 72,900
Estimated poached high value species loss	N\$ 0
Total conflict cost estimate	N\$ 72,900

the chart shows the approximate ratio of benefits to costs

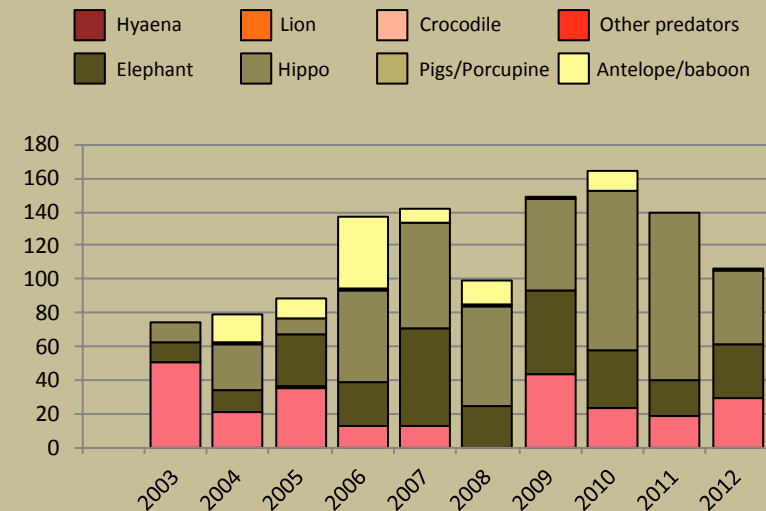


Management performance in 2012

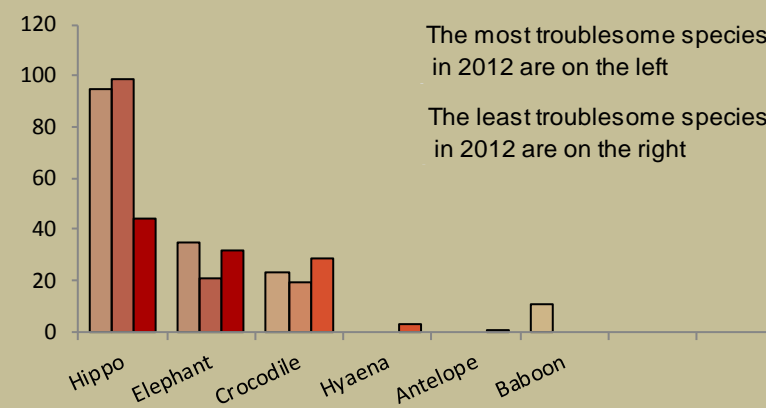
Category	Score	Performance		
1 Adequate staffing	3			
2 Adequate expenditure	2			
3 Audit attendance	2			
4 NR management plan	1			
5 Zonation	1			
6 Leadership	1			
7 Display of material	2			
8 Event Book modules	3			
9 Event Book quality	2			
10 Compliance	3			
11 Game census	1			
12 Reporting & adaptive m/ment	3			
13 Law enforcement	3			
14 Human Wildlife Conflict	3			
15 Sources of NR income	2			
16 Benefits produced	2			
17 Resource Sustainability	2			

Animal	Number of Sightings
B. Zebra	3
Duiker	3
Elephant	10
Giraffe	2
Impala	4
Kudu	2
Roan	2
Sable	2
Steenbok	4
Warthog	4

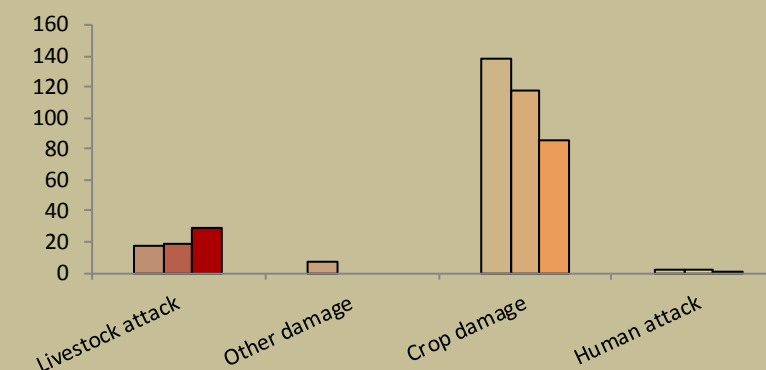
the chart shows the total number of incidents each year, subdivided by species, grouped as herbivores and predators



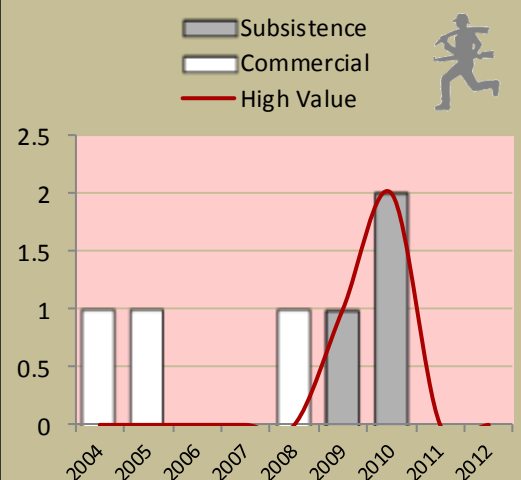
the chart shows the number of incidents per species for the last 3 years; the darkest bar (on the right) indicates the current year for each species



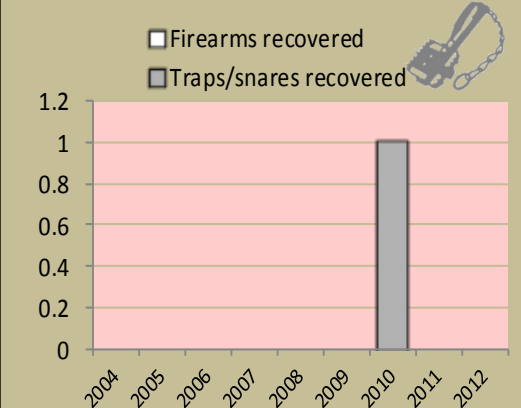
the chart shows the number of incidents per category for the last 3 years; the darkest bar (on the right) indicates the current year for each type



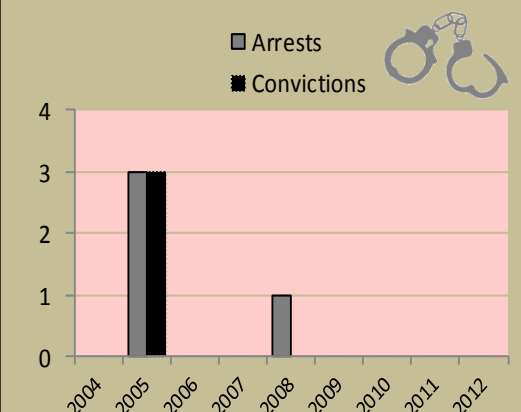
Commercial poaching is a serious threat to conservancy benefits. The chart shows the number of incidents per category



number of incidents per category



number of incidents per category

[illegible]

- **Potential trophy value** - the average national trophy value of each trophy species multiplied by the quota number
- **Potential other use value** - the average national meat value of each common species multiplied by the quota number
 - the average live sale value of each high value species (indicated with an *) multiplied by the quota number
 - high value species are never used for meat

Wildlife status

Response	Percentage
U.S. should take action to reduce greenhouse gas emissions	85%
U.S. should not take action to reduce greenhouse gas emissions	15%

Management performance & other data

▶ success/
benefit created

weakness/
action needed

Conservancies reduce environmental costs while increasing environmental benefits. Benefits from wildlife can far outweigh human wildlife conflict costs.



monitoring numbers and trends for a healthy conservancy...

Current wildlife numbers and status

Species	Animals Seen	Estimate	Wildlife Status		
			Count Trend	National Guideline	Desired Number
B. Zebra					
Duiker					
Elephant					
Giraffe					
Impala					
Kudu					
Roan					
Sable					
Steenbok					
Warthog					

Wildlife Status

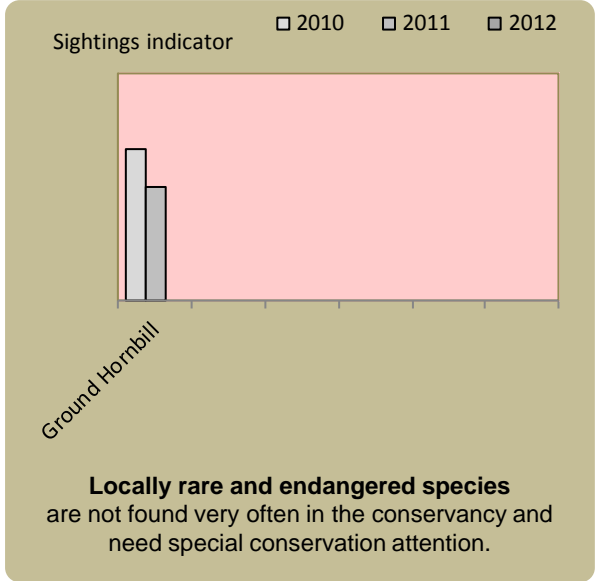
Count trend – gives the species status in the conservancy based on game count trend data.

National guideline – gives the species status in the conservancy using national guidelines for the conservancy; for example, lions may cause local problems, but are of high value and are rare at landscape level.

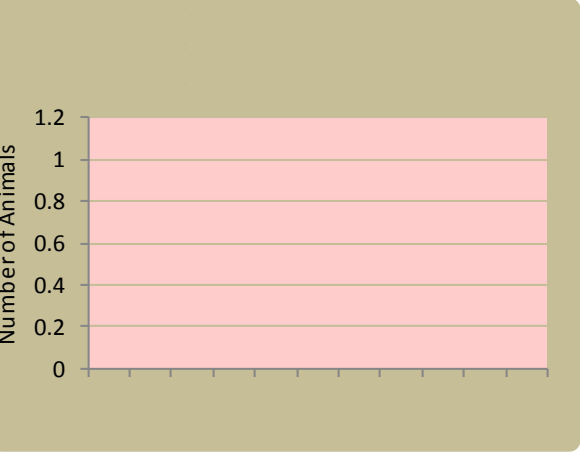
Desired number – gives the species status in the conservancy based on what the conservancy would like to have.

dark green (abundant) – there should be less;
light green (common) – the desired number is reached;
yellow (uncommon) – there should be more;
light orange (rare) – there should be more than double;
dark orange (very rare) – there should be more than triple;
red (extinct) – the species needs to be reintroduced.

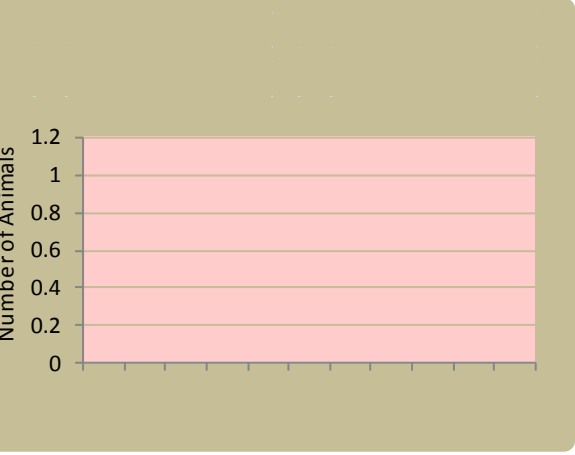
Locally rare species



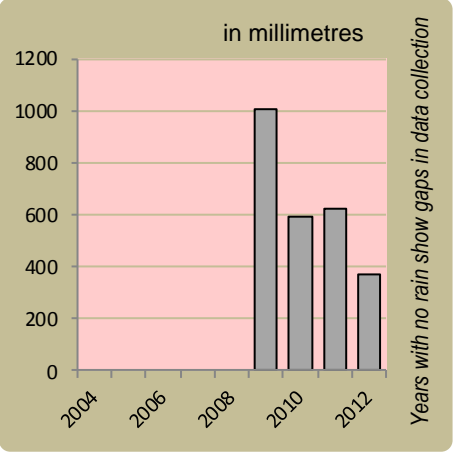
Wildlife introductions



Wildlife mortalities

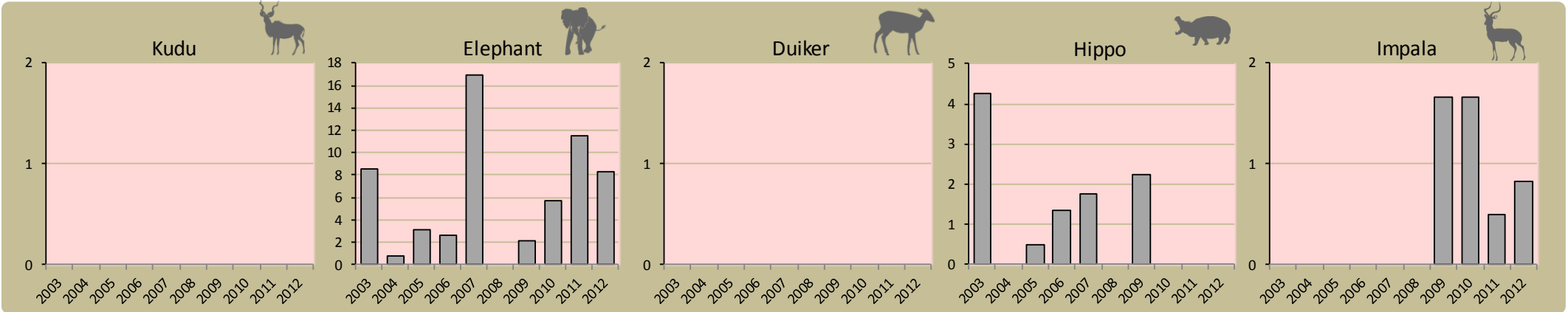


Annual rainfall



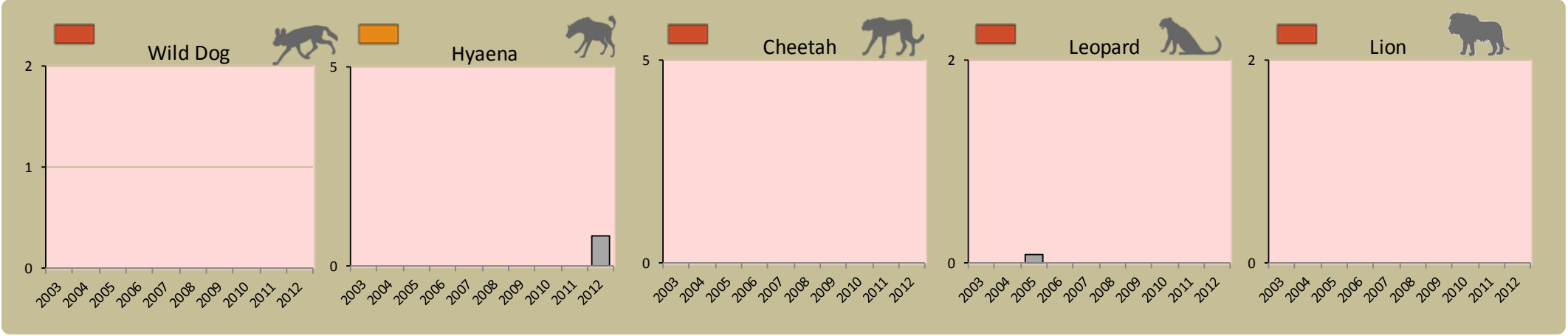
Fixed route patrols

charts show the number of sightings of each species per fixed route foot patrol each year

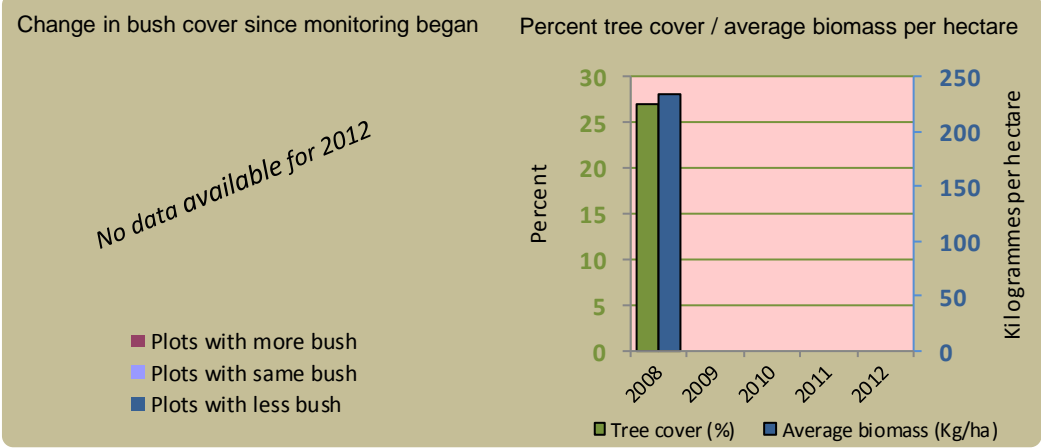


Predator monitoring

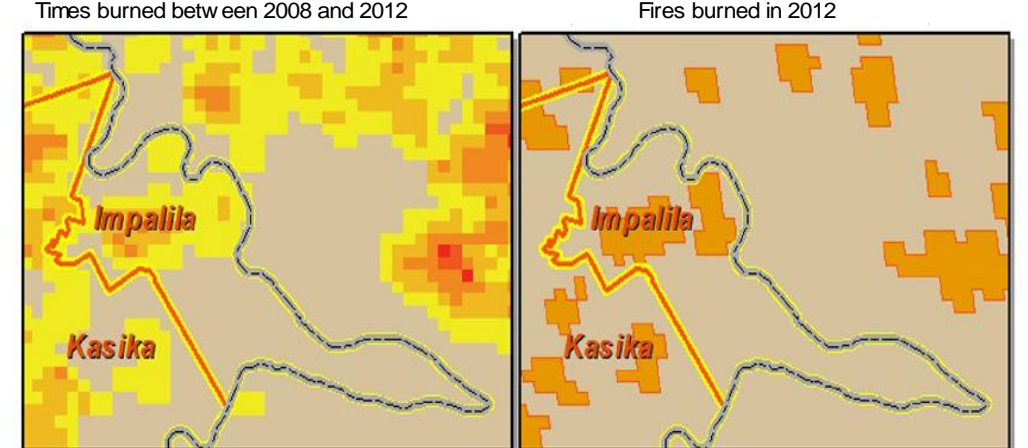
charts show the average number of animals seen per Event Book each year
status barometers reflect the general sightings trend over the last 5 years



Vegetation monitoring



Fire monitoring



Wildlife provides a wide range of benefits. Some wildlife can cause conflicts, but all wildlife is of value to tourism, trophy hunting and a healthy environment.



By using all the available information and adapting and improving activities, threats such as human wildlife conflict, poaching and other issues can be minimised.

