

# GAME COUNTS IN NORTH-WEST NAMIBIA

## Conservancies south of the veterinary fence

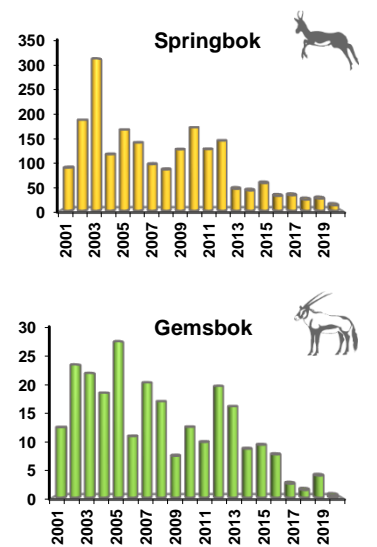
May 2020

### Total number of animals seen each year

Species	2001	2002	2003	2004	2005	2006	2007	2008	2009	2010	2011	2012	2013	2014	2015	2016	2017	2018	2019	2020
Baboon	63	72	148	55	236	104	238	134	177	228	123	320	206	46	75	309	161	118	121	23
Cheetah				3	4	1			3				1	6	5		3			
Duiker	8	5	1	4	18	3	2		7	1	7	2	11	3	3	8	2	3	2	1
Elephant	15	12	1	5	60	4	27	24	37	20	35	6	6	55	23	22	60	26	20	22
Gemsbok	356	681	628	537	928	367	707	625	273	452	354	740	642	296	358	296	96	52	158	17
Giraffe	26	25	30	45	35	57	71	18	57	84	57	83	89	41	89	51	77	80	63	90
Hyaena				1	7		1	3	1	4	1	1	3			1	3		1	2
Jackal	25	35	26	26	34	22	40	32	22	46	33	42	45	32	32	42	38	22	14	17
Klipspringer		9	14	8	32	10	19	5	4	16	7	37	22	10	9	13	14	9	6	6
Kudu	101	190	216	216	269	191	313	181	181	202	127	246	146	111	98	104	32	22	40	17
Ostrich	193	207	275	336	336	239	270	257	391	337	288	515	263	173	141	167	138	174	249	137
Springbok	2,576	5,423	8,939	3,366	5,618	4,746	3,326	3,112	4,670	6,208	4,564	5,441	1,797	1,434	2,184	1,189	1,242	874	1,020	461
Steenbok	26	47	71	77	75	40	151	48	59	73	39	160	188	64	104	92	48	32	52	32
Warthog	3			4	2	4	6				4	2	2	2	4			1		
H. Zebra	170	193	430	295	352	338	442	420	326	761	481	686	1,155	367	657	359	163	230	314	88

### Trends:

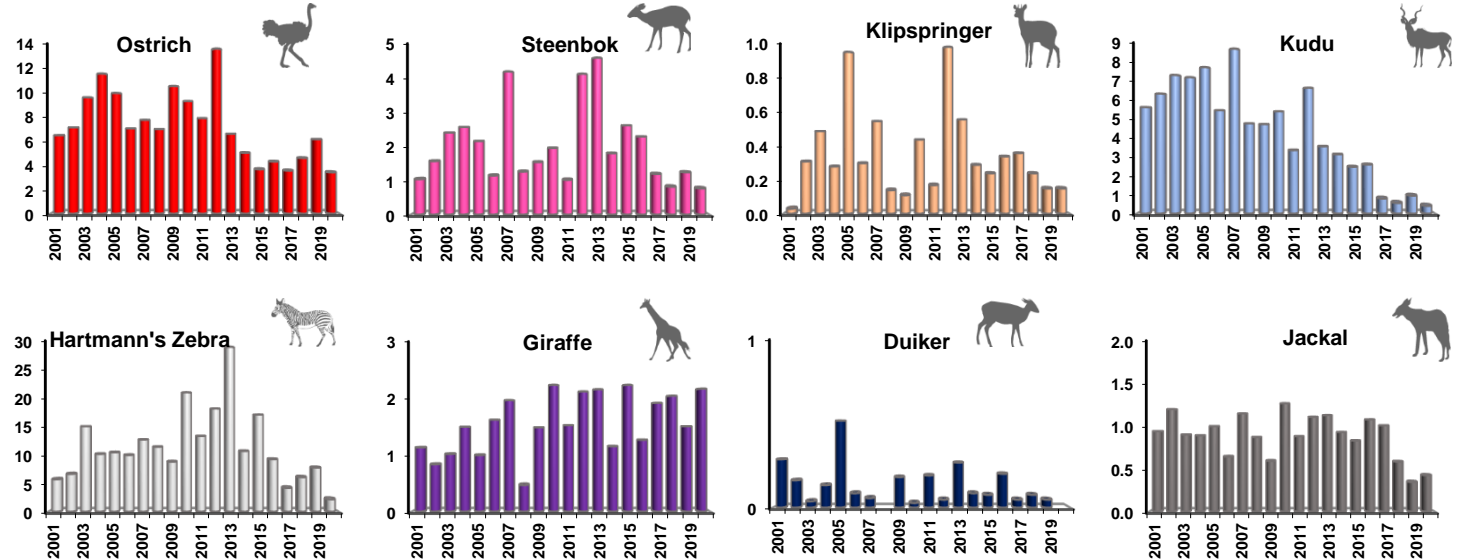
#### Animals per 100km



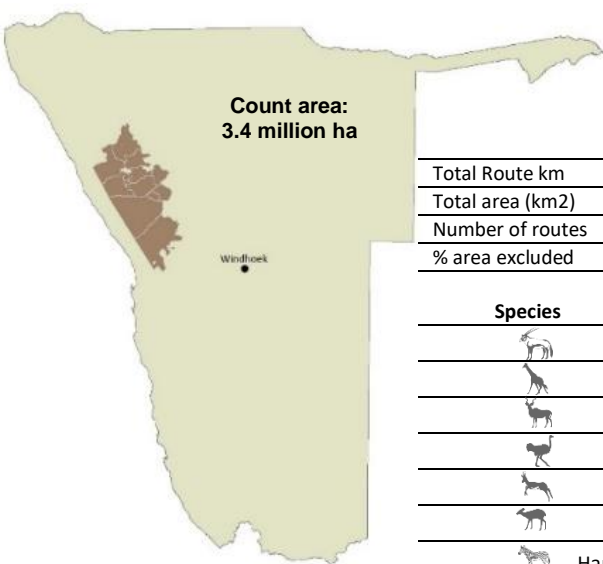
### Total Population Estimates

Species	Estimate	Lower 95% CL	Upper 95% CL
Gemsbok (U)	171	47	623
Kudu (HN)	387	122	1,225
Ostrich (U)	1,155	562	2,371
Springbok (HN)	9,585	5,216	17,613
Steenbok (U)	2,803	1,681	4,672
Hartmann's Zebra (HN)	1,061	549	2,053

All above estimates are derived using DISTANCE analysis. This takes account of drop off in detection with distance from the transect line. They are conservative estimates as 19% of the count area is not sampled (due to inaccessibility) and is consequently assumed to hold no animals. Model selection: U = uniform key; HN = half normal



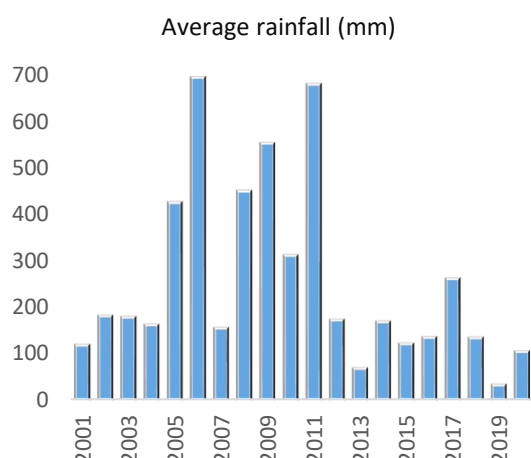
### Animals seen during this count and minimum estimates



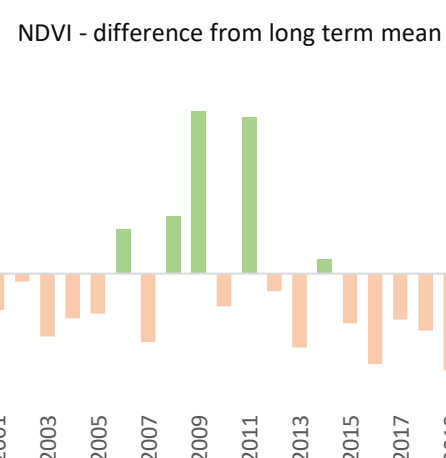
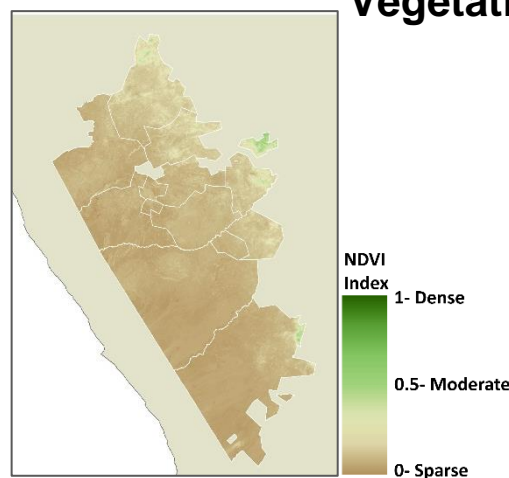
	Total	Ikhorro IGoreb	#Khoadi-//Hõas	//Audi	Doro INawas & Uibasen Twyfelfontein	#Gaingu	//Huab	Ohungu	Otjimboyo	Sorris sorris	Torra	Tsiseb
Total Route km	3,986	188	481	48	485	734	441	175	93	206	495	641
Total area (km2)	34,419	1,337	3,358	335	4,137	7,756	2,129	1,245	432	2,290	3,492	7,908
Number of routes	67	4	9	2	9	10	8	3	2	4	8	8
% area excluded	19	30	45	0	6	17	4	14	30	18	25	16
<b>Species</b>												
Gemsbok			1 (3)		5 (33)						11 (45)	
Giraffe			50 (188)		10 (20)		1 (6)			3 (6)	26 (52)	
Kudu							1 (3)	8 (43)			8 (33)	
Ostrich			9 (38)		2 (16)	6 (39)		4 (27)		8 (61)	106 (453)	2 (26)
Springbok		2 (13)	22 (72)		24 (173)	45 (357)	60 (481)	1 (5)	1 (3)	43 (423)	202 (1,106)	61 (778)
Steenbok		2 (12)	10 (42)		1 (17)	1 (7)	4 (10)	4 (22)	1 (4)	1 (9)	6 (28)	2 (27)
Hartmann's Zebra			21 (93)		5 (26)	8 (56)	10 (48)			1	36 (175)	7 (62)

Values without brackets are numbers of animals seen along transects. Values inside brackets are minimum estimates assuming all animals within 500m on each side of the transect line are detected i.e. there is no adjustment for drop off in detection with distance from the transect line. In addition, for springbok, gemsbok and giraffe, large groups were excluded from extrapolations and added afterwards.  
 The sum of these values will be significantly lower than the totals indicated in the top right table as the total estimates take account of species detection curves.

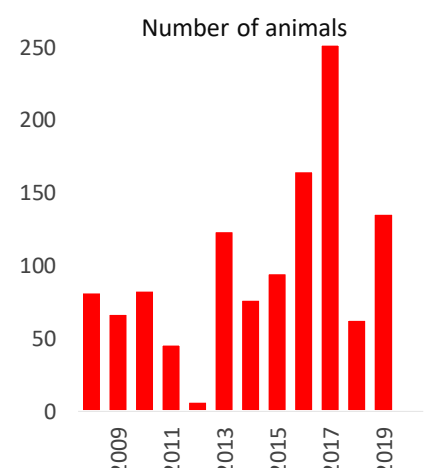
### Rainfall



### Vegetation



### Mortalities



The rainfall season is from July to June and values are an average for the whole area. The year represents the season immediately prior to the count.

NDVI is a measure of the density of chlorophyll in vegetation cover. It can be used as an indicator of the amount of biomass available to wildlife. The map shows the NDVI status in the current year (Feb-Apr) and the trend indicates the average deviation of southern area conservancies from the long-term mean, in each year.

Total number of carcasses from all species recorded in the Event Book