

GAME COUNTS IN NORTH-WEST NAMIBIA

Hobaterere concession

May 2023

No counts were undertaken in 2013 and 2014.

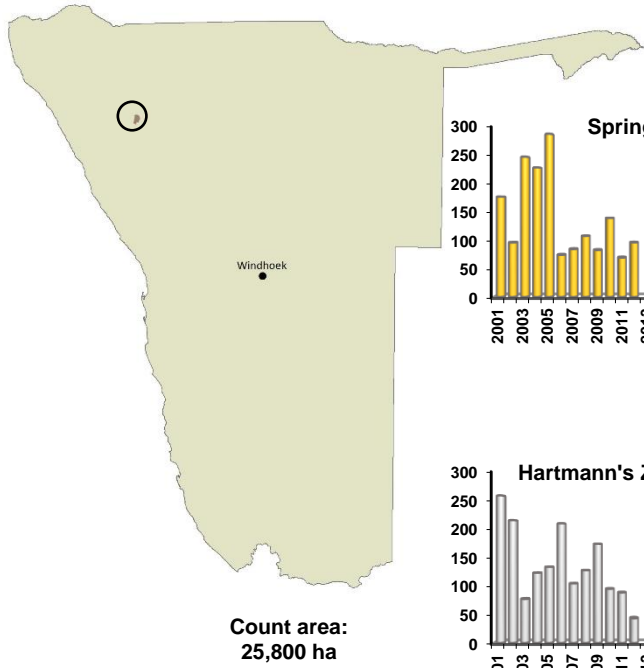
Total number of animals seen each year

Species	2001	2002	2003	2004	2005	2006	2007	2008	2009	2010	2011	2012	2015	2016	2017	2018	2019	2020	2021	2022	2023
Baboon				4											1	20	20				
Eland	52	19		12	10	12	9						45	5			13				
Elephant	6	2	1				2	3			20	1	1	3	10		2				
Gemsbok	83	217	251	108	158	117	37	52	80	82	40	90	24	15	48	18	27	56	47	46	3
Giraffe	54	47	15	63	31	24	18	35	11	1	12	9	29	33	26	13	23	32	13		17
Jackal		9	3		5	4	5	3	3	8		3	8	7	4	2	6	2	2		3
Kudu	17	7	4	11	15	15	5	3	3	1		3	1	14	6		10		2	1	2
Ostrich	3	2	4		1	4								1							
Springbok	130	66	170	154	194	52	51	65	50	94	51	60	34	53	38	62	33	67	93	60	64
Steenbok	2	2	1	3	3	1	4				1	3	2	5	1	1			2		2
Warthog	3	9	8	1	10	5	1		2			1	4	1	3				1		
H. Zebra	190	148	53	83	90	147	63	77	105	64	65	27	129	130	52	80	27	111	66	11	13

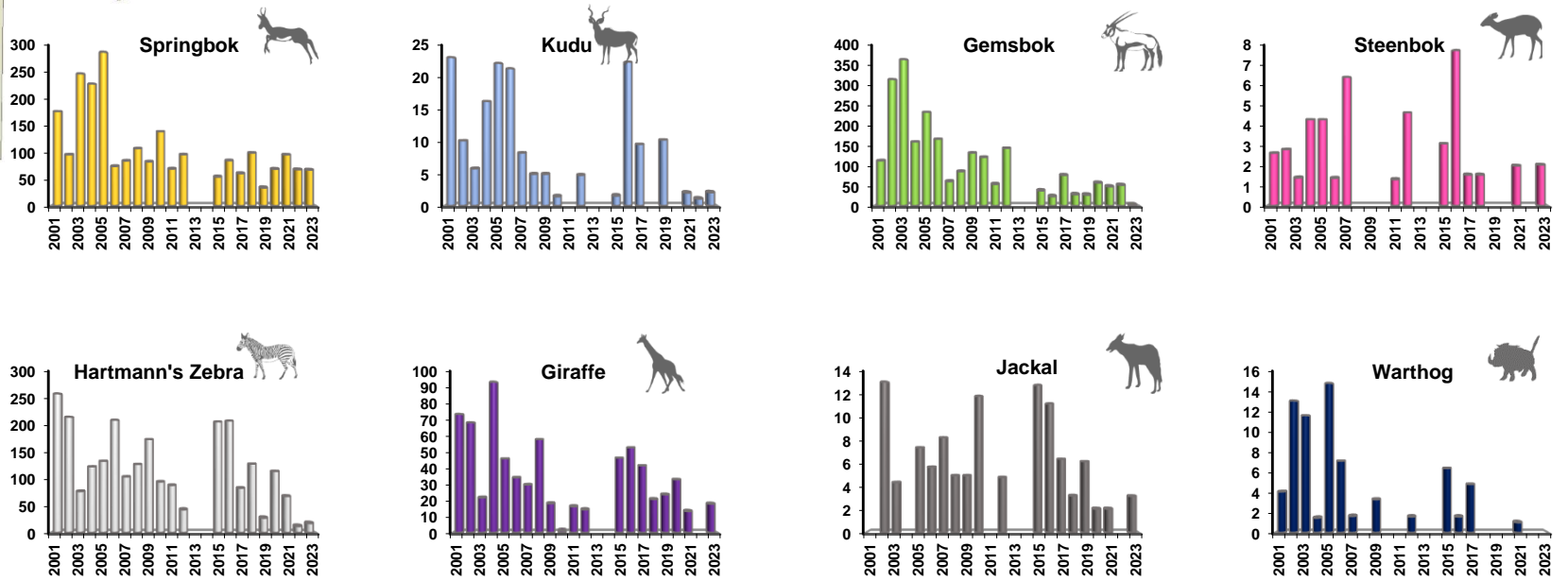
Total Population Estimates

Species	Population estimate	Upper 95% CL
Gemsbok (U)	14	180
Kudu (HN)	16	76
Springbok (HN)	507	2,580
Hartmann's Zebra (HN)	73	230

All above estimates are derived using DISTANCE analysis. This takes account of drop off in detection with distance from the transect line. Model selection: U = uniform key; HN = half normal



Trends - Number of animals per 100km



Animals seen during this count and minimum estimates

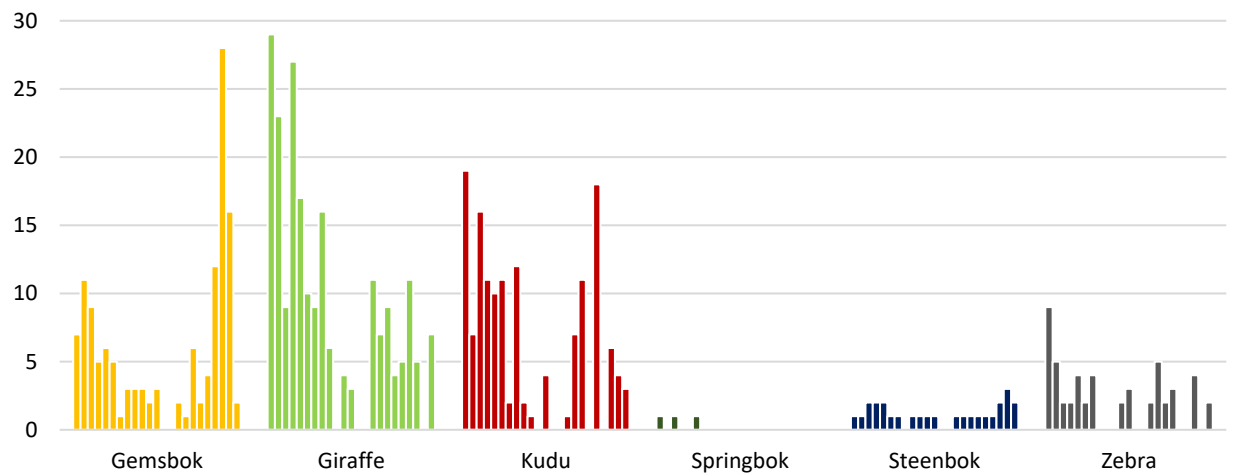
Values without brackets are numbers of animals seen along transects. Values inside brackets are minimum estimates assuming all animals within 500m on each side of the transect line are detected i.e. there is no adjustment for drop off in detection with distance from the transect line.

Total Route km	94
Total area (km2)	258
Number of routes	4
% Area excluded	5

Species	Count	Minimum Estimate
Gemsbok	3	(7)
Giraffe	17	(35)
Kudu	2	(5)
Ostrich		
Springbok	64	(148)
Steenbok	2	(4)
H. Zebra	13	(16)

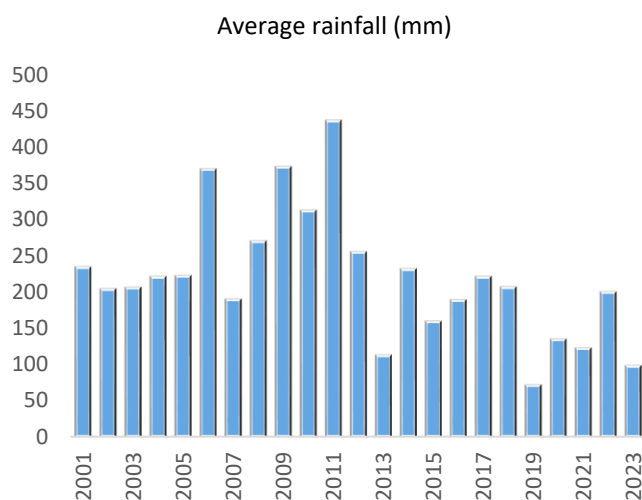
These values are significantly lower than the totals indicated in the top left table as the total estimates take account of species detection curves.

Percentage of all animals counted in the NW (north of the vet fence): 2001-2023



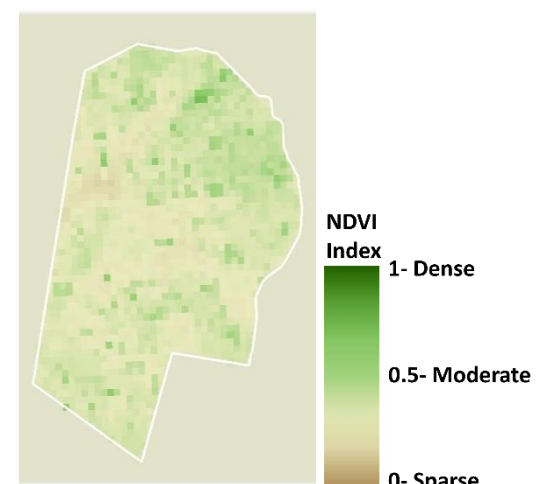
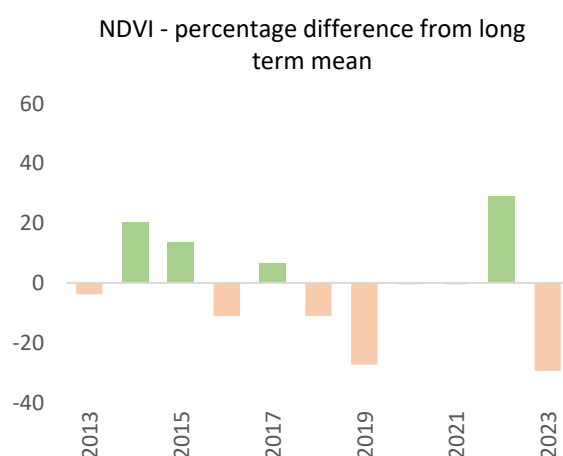
The dramatic spike in the proportion of gemsbok seen in Hobaterere relative to the rest of the north-west in 2021 reflected the overall decline in animal numbers in communal conservancies. By 2023 numbers of gemsbok in all sub areas of the north-west were very low, even in the concession areas.

Rainfall



The rainfall season is from July to June and values are an average for the whole area.

Vegetation



NDVI is a measure of the density of chlorophyll in vegetation cover. It can be used as an indicator of the amount of biomass available to wildlife. The map shows the NDVI status in the current year (Feb-Apr) and the trend indicates the average deviation of the concession from the long-term mean, in each year.