

GOVERNMENT GAZETTE

OF THE

REPUBLIC OF NAMIBIA

N\$8.40

WINDHOEK - 6 March 2020

No. 7138

CONTENTS

Page

GOVERNMENT NOTICES

65	Declaration of area of inland waters as fisheries reserve: Luhingi Fishing area in Mayuni Conservancy: Inland Fisheries Resources Act, 2003	1
66	Declaration of areas of inland waters as fisheries reserve: Qhuqhumupa and Kalume Fishing areas in Balyerwa Conservancy: Inland Fisheries Resources Act, 2003	4
67	Declaration of area of inland waters as fisheries reserve: Lwezuba and Kabweza fishing areas in Lusese Conservancy: Inland Fisheries Resources Act, 2003	7
68	Declaration of Munga, Nsala and Makumbi Fishing area as Fisheries Reserve: Inland Fisheries Resources Act, 2003	10

Government Notices

MINISTRY OF FISHERIES AND MARINE RESOURCES

No. 65

2020

DECLARATION OF AREA OF INLAND WATERS AS FISHERIES RESERVE: LUHINGI FISHING AREA IN MAYUNI CONSERVANCY: INLAND FISHERIES RESOURCES ACT, 2003

Under section 22(1) of the Inland Fisheries Resources Act, 2003 (Act No. 1 of 2003), I, in response to an initiative of the Zambezi Regional Council and the Mashu Traditional Authority and in consultation with that Regional Council and that Traditional Authority, declare the Luhingi fishing area in the Mayuni Conservancy as a fisheries reserve more fully described in, and subject to the conditions set out in, the Schedule.

DR. A. KAWANA
ACTING MINISTER OF FISHERIES
AND MARINE RESOURCES

Windhoek, 22 February 2020

- (b) the management agreements drawn up for the Lwezuba and Kabweza Fisheries Reserves by the Lusesse Conservancy in association with the Masubia Traditional Authority, the Ministry of Fisheries and Marine Resources and the Regional Council in Katima Mulilo are formally recognised;
- (c) an amount will be charged per person for recreational catch and release fishing as agreed between all stakeholders; and
- (d) harvesting will be done in November by the members with 3.5- and 4-inch multifilament gillnets and the dates of the harvest will be determined by the community.

MINISTRY OF FISHERIES AND MARINE RESOURCES

No. 68

2020

**DECLARATION OF MUNGA, NSALA AND MAKUMBI FISHING AREA AS FISHERIES
RESERVES: INLAND FISHERIES RESOURCES ACT, 2003**

Under section 22(1) of the Inland Fisheries Resources Act, 2003 (Act No.1 of 2003), in response to the written initiative of the Nakabolelwa Conservancy and in consultation with the Council and Traditional Authority, I declare the areas of inland waters of which the geographic boundaries are set out in the Schedule as fisheries reserves and the fishing activities permitted within the declared fisheries reserves are set out in the Schedule.

DR. A. KAWANA
ACTING MINISTER OF FISHERIES
AND MARINE RESOURCES

Windhoek, 22 February 2020

SCHEDULE

1. Description of boundaries of Munga, Nsala and Makumbi Fisheries Reserve

- (1) The Munga, Nsala and Makumbi Fisheries Reserves are fishing areas more fully described as indicated by their respective GPS coordinates and Figures 1, 2 and 3 set out in item 2(1), 2(2) and 2(3) respectively and both areas are within the borders of the Nakabolelwa Conservancy.
- (2) The Munga, Nsala and Makumbi area Fisheries Reserves, hereafter formally named the Fish Protection Area is an isolated pool during the low-water phase that connects with the Chobe River during the flooding season.
- (3) This area becomes an isolated pool during the low-water phase and during the high-water phase, the site is flooded and fish will freely move in and out of the area.

2. GPS Coordinates and images of fisheries reserves

(1) GPS coordinates and image for the Munga Fisheries Reserve

System		hddd mm. mmm'					
		South			East		
		Degrees (°)	Minutes	Seconds (^o)	Degrees	Minutes	Seconds (^o)
Chobe	Munga	17	50	690	24	50	113
Chobe	Munga	17	50	713	24	50	122
Chobe	Munga	17	50	650	24	50	180
Chobe	Munga	17	50	673	24	50	217
Chobe	Munga	17	50	678	24	50	234
Chobe	Munga	17	50	665	24	50	280
Chobe	Munga	17	50	662	24	50	316
Chobe	Munga	17	50	703	24	50	413
Chobe	Munga	17	50	717	24	50	436
Chobe	Munga	17	50	719	24	50	518
Chobe	Munga	17	50	664	24	50	567
Chobe	Munga	17	50	662	24	50	568
Chobe	Munga	17	50	681	24	50	573
Chobe	Munga	17	50	693	24	50	568
Chobe	Munga	17	50	716	24	50	547
Chobe	Munga	17	50	738	24	50	510
Chobe	Munga	17	50	754	24	50	441
Chobe	Munga	17	50	752	24	50	425
Chobe	Munga	17	50	730	24	50	402
Chobe	Munga	17	50	694	24	50	375
Chobe	Munga	17	50	679	24	50	332
Chobe	Munga	17	50	682	24	50	301
Chobe	Munga	17	50	679	24	50	280
Chobe	Munga	17	50	686	24	50	247
Chobe	Munga	17	50	690	24	50	231
Chobe	Munga	17	50	706	24	50	187
Chobe	Munga	17	50	715	24	50	158
Chobe	Munga	17	50	713	24	50	144

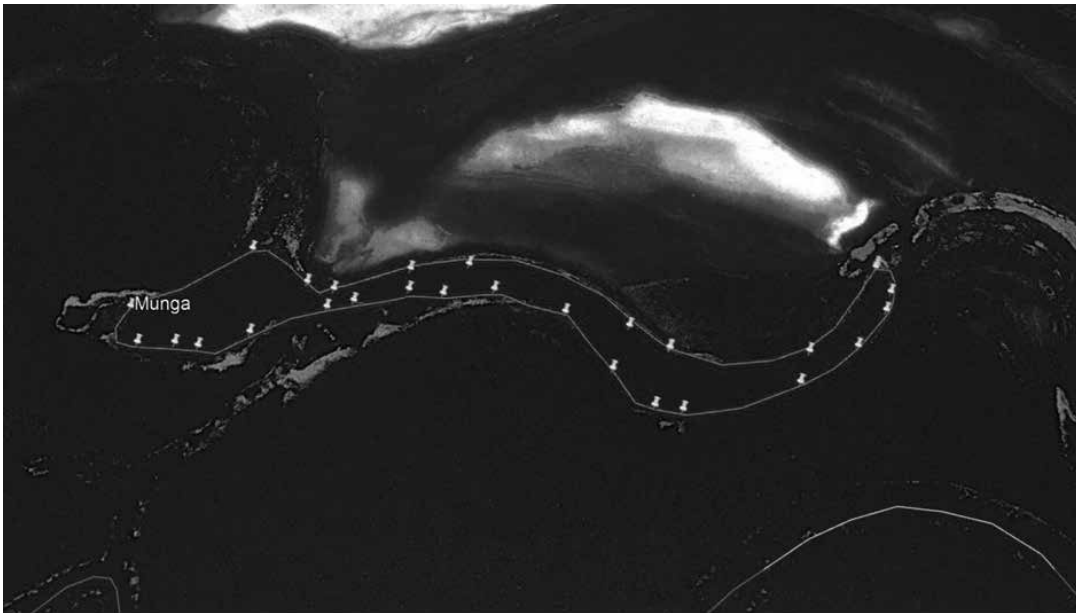


Figure 1: The boundary of the Munga Fisheries Reserve in the Nakabolelwa Conservancy, Chobe River. (Perimeter 1.98km) (© 2018 Google LLC.).

(2) GPS coordinates and image for Nsala Fisheries Reserve

System		hddd mm. mmm'			East		
		South			Degrees	Minutes	Seconds
		Degrees (°)	Minutes	Seconds (')	Degrees	Minutes	Seconds (')
Chobe	Nsala	17	50	691	24	51	331
Chobe	Nsala	17	50	670	24	51	361
Chobe	Nsala	17	50	662	24	51	382
Chobe	Nsala	17	50	657	24	51	426
Chobe	Nsala	17	50	661	24	51	452
Chobe	Nsala	17	50	678	24	51	510
Chobe	Nsala	17	50	674	24	51	537
Chobe	Nsala	17	50	666	24	51	566
Chobe	Nsala	17	50	680	24	51	585
Chobe	Nsala	17	50	687	24	51	544
Chobe	Nsala	17	50	713	24	51	497
Chobe	Nsala	17	50	721	24	51	480
Chobe	Nsala	17	50	708	24	51	462
Chobe	Nsala	17	50	697	24	51	438
Chobe	Nsala	17	50	685	24	51	386
Chobe	Nsala	17	50	678	24	51	373

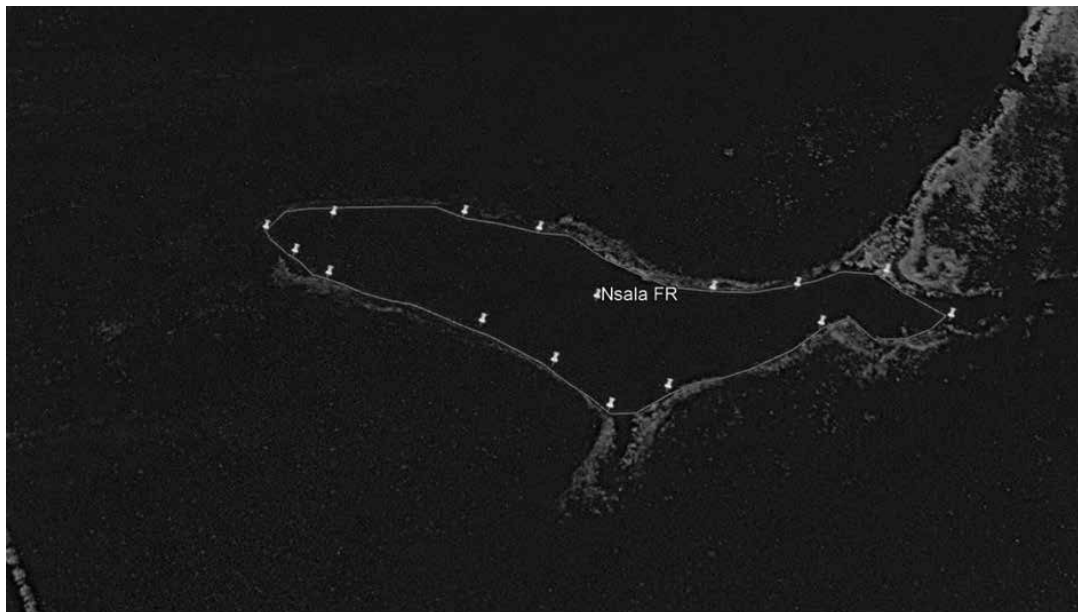


Figure 2: The boundary of the Nsala Fisheries Reserve in the Nakabolelwa Conservancy, Chobe River. (Perimeter 0.87km) (© 2018 Google LLC.).

(3) GPS coordinates and image for Makumbi Fisheries Reserve

System		hddd mm. mmm'					
		South			East		
		Degrees (°)	Minutes	Seconds (')	Degrees	Minutes	Seconds (')
Chobe	Makumbi	17	50	451	24	51	678
Chobe	Makumbi	17	50	432	24	51	678
Chobe	Makumbi	17	50	407	24	51	683
Chobe	Makumbi	17	50	388	24	51	690
Chobe	Makumbi	17	50	363	24	51	707
Chobe	Makumbi	17	50	344	24	51	737
Chobe	Makumbi	17	50	334	24	51	767
Chobe	Makumbi	17	50	335	24	51	803
Chobe	Makumbi	17	50	345	24	51	826
Chobe	Makumbi	17	50	356	24	51	843
Chobe	Makumbi	17	50	359	24	51	835
Chobe	Makumbi	17	50	353	24	51	808
Chobe	Makumbi	17	50	348	24	51	790
Chobe	Makumbi	17	50	352	24	51	747
Chobe	Makumbi	17	50	386	24	51	708
Chobe	Makumbi	17	50	433	24	51	682
Chobe	Makumbi	17	50	447	24	51	680

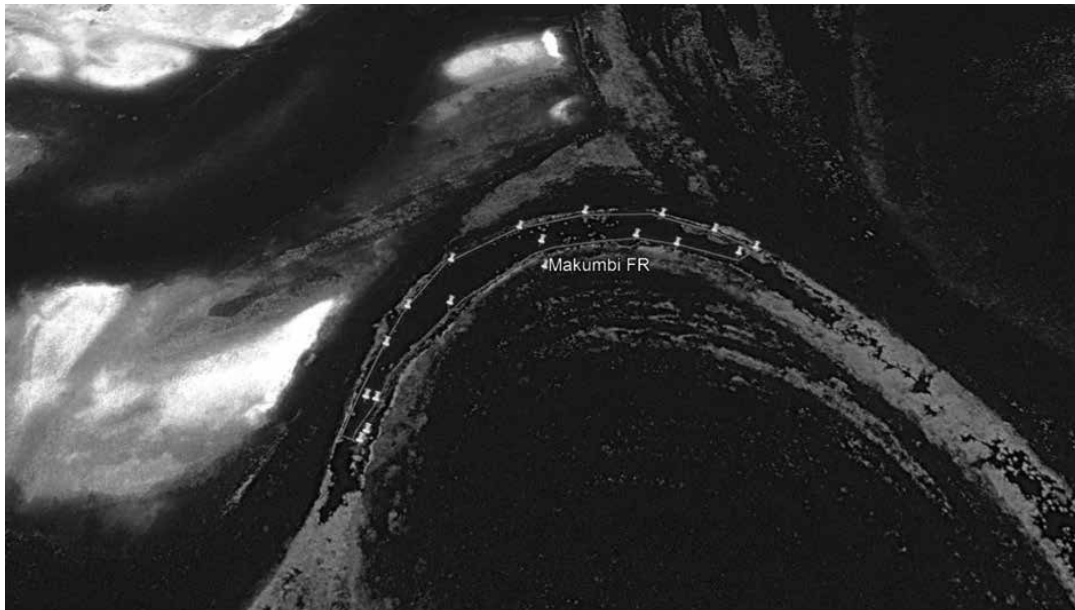


Figure 3: The boundary of the Makumbi Fisheries Reserve in the Nakabolelwa Conservancy, Chobe River. (Perimeter 0.86km) (© 2018 Google LLC.).

3. Specific fishing activities permitted in Munga, Nsala and Makumbi Fisheries Reserves and conditions applicable

- (1) The management agreements drawn up for the Munga, Nsala and Makumbi Fisheries Reserves by the Nakabolelwa Conservancy in association with the Bukalo Traditional Authority, the Ministry of Fisheries and Marine Resources and the Zambezi Regional Council in Katima Mulilo are formally recognised.
 - (2) A person may only practice catch and release when fishing in the Munga, Nsala and Makumbi Fisheries Reserves.
 - (3) An annual fee as prescribed in section 29(1)(c) of the Act is charged for catch and release fishing in the Munga, Nsala and Makumbi Fisheries Reserves.
 - (4) Members may only harvest in November and only 3.5 and 4-inch multifilament gillnets may be used which is decided by the IFC in consultation with the members.
 - (5) A person may not use netting or lights used to assist with fishing.
 - (6) Cattle are allowed to drink water at the Munga, Nsala and Makumbi Fisheries Reserves.
 - (7) A person is not allowed to harvest any aquatic vegetation, animal or sand from the Munga, Nsala and Makumbi Fisheries Reserves.
 - (8) Any other activity that may impact on the integrity of the ecosystem is not allowed.
-