

**Minutes of the**

---

**MEETING OF THE EAF-NANSEN PROJECT REGIONAL STEERING  
COMMITTEE FOR THE BENGUELA CURRENT COMMISSION AREA**

**Windhoek, Namibia, 29 September 2009**



## **THE EAF-NANSEN PROJECT**

FAO started the implementation of the project “Strengthening the Knowledge Base for and Implementing an Ecosystem Approach to Marine Fisheries in Developing Countries (EAF-Nansen GCP/INT/003/NOR)” in December 2006 with funding from the Norwegian Agency for Development Cooperation (Norad). The EAF-Nansen project is a follow-up to earlier projects/programmes in a partnership involving FAO, Norad and the Institute of Marine Research (IMR), Bergen, Norway on assessment and management of marine fishery resources in developing countries. The project works in partnership with governments and also Global Environment Facility (GEF)-supported Large Marine Ecosystem (LME) projects and other projects that have the potential to contribute to some components of the EAF-Nansen project.

The EAF-Nansen project offers an opportunity to coastal countries in sub-Saharan Africa, working in partnership with the project, to receive technical support from FAO for the development of national and regional frameworks for the implementation of Ecosystem Approach to Fisheries management and to acquire additional knowledge on their marine ecosystems for their use in planning and monitoring. The project contributes to building the capacity of national fisheries management administrations in ecological risk assessment methods to identify critical management issues and in the preparation, operationalization and tracking the progress of implementation of fisheries management plans consistent with the ecosystem approach to fisheries.

STRENGTHENING THE KNOWLEDGE BASE FOR AND  
IMPLEMENTING AN ECOSYSTEM APPROACH TO  
MARINE FISHERIES IN DEVELOPING COUNTRIES  
(EAF-NANSEN GCP/INT/003/NOR)

Minutes of the  
MEETING OF THE EAF-NANSEN PROJECT REGIONAL STEERING COMMITTEE  
FOR THE BENGUELA CURRENT COMMISSION AREA

Windhoek, Namibia, 29 September 2009

The designations employed and the presentation of material in this information product do not imply the expression of any opinion whatsoever on the part of the Food and Agriculture Organization of the United Nations (FAO) concerning the legal or development status of any country, territory, city or area or of its authorities, or concerning the delimitation of its frontiers or boundaries. The mention of specific companies or products of manufacturers, whether or not these have been patented, does not imply that these have been endorsed or recommended by FAO in preference to others of a similar nature that are not mentioned.

All rights reserved. FAO encourages reproduction and dissemination of material in this information product. Non-commercial uses will be authorized free of charge. Reproduction for resale or other commercial purposes, including educational purposes, may incur fees. Applications for permission to reproduce or disseminate FAO copyright materials and all other queries on rights and licences, should be addressed by e-mail to:

[copyright@fao.org](mailto:copyright@fao.org)

or to the

Chief, Publishing Policy and Support Branch  
Office of Knowledge Exchange, Research and Extension  
FAO, Viale delle Terme di Caracalla, 00153 Rome, Italy

### **PREPARATION OF THIS DOCUMENT**

This is the minutes of the meeting of the Benguela Current Commission area Regional Steering Committee (BCC-RSC) for the EAF-Nansen project. The BCC-RSC is one of the regional steering committees for the EAF-Nansen project (Strengthening the Knowledge Base for and Implementing an Ecosystem Approach to Marine Fisheries in Developing Countries). The meeting was held in Windhoek, Namibia on 29<sup>th</sup> September 2009. The minutes captures the discussions at the meeting, the decisions taken and the recommendations made. It was prepared by the EAF-Nansen project management unit in Rome and circulated to all the participants for comments and confirmation.

**FAO EAF-Nansen Project.**

Minutes of the Meeting of the EAF-Nansen Project Regional Steering Committee for the Benguela Current Commission Area. Windhoek, Namibia, 29 September 2009.

*FAO EAF-Nansen Project Report. No. 8. Rome, FAO. 2010. 11p.*

**ABSTRACT**

The first meeting of the EAF-Nansen project Regional Steering Committee for the Benguela Current Commission (BCC) area was held at the UNDP offices in Windhoek, Namibia on 29<sup>th</sup> September 2009. The meeting was attended by representatives from South Africa, Namibia, Angola and also the BCC, FAO and IMR (Institute of Marine Research, Bergen). Namibia and Angola were elected chair and vice Chair respectively. Moses Maurihungirire Director, Resource Management of the Ministry of Fisheries and Marine Resources of Namibia chaired the meeting; he was assisted by Kumbi Nsingui Kilongo of the National Institute of Fisheries Research of Angola.

The meeting was started with an overview of the EAF-Nansen project by the Project Coordinator who also elaborated on the basic principles of the ecosystem approach to fisheries (EAF). Activities and achievements under each component of the project were presented and discussed. Also presented were the project management structure, ecosystem survey activities under the project, the mid-term review of the EAF-Nansen project and the work plan for 2010. Special mention was made of the three projects that the EAF-Nansen project will be implementing with the BCC. On the last issue it was noted that considering the proposed budgets of the projects and the provision made by the BCC Ecosystem Advisory Committee, cost sharing or co-financing will be necessary for successful implementation of the EAF-Nansen/BCC projects.

The recommendations compiled in the course of the meeting were discussed and adopted by the members.

## **INTRODUCTION**

1. The first meeting of the EAF-Nansen project Regional Steering Committee for the Benguela Current Commission (BCC) area was held at the UNDP offices, UN House, Klein Windhoek on 29<sup>th</sup> September 2009. The meeting was attended by representatives from South Africa, Namibia, Angola and also representatives from the BCC, FAO and IMR. It was expected that each country would be represented by the Director of Fisheries and the national focal point of the EAF-Nansen project. There were also some observers from the Ministry of Fisheries and Marine Resources of Namibia and the University of Cape Town, South Africa. The list of participants is shown in Annex B.
2. The EAF-Nansen Project Coordinator, Kwame Koranteng, welcomed participants to the meeting and thanked the BCC management for the excellent arrangement that have been made both for the meeting and for the informal meeting on the preparation of the three EAF-Nansen/BCC projects held at the Protea Hotel in Windhoek on 28 and 29 September 2009.
3. In his short statement, the Chief Technical Advisor of the BCC Dr Hashali Hamukuaya, also welcomed the participants to Windhoek. He also thanked the members who had taken part in the informal meeting on the preparation of the three EAF-Nansen/BCC projects in the last two days. He reminded the meeting about FAO's request to the BCC Management Board to adopt the Regional Steering Committee of the EAF-Nansen project as a subsidiary body of the Commission. He said that the Management Board had asked the BCC secretariat to work with the project coordination of the EAF-Nansen project on some aspects of the terms of reference presented to the Board.
4. Namibia and Angola were elected chair and vice Chair respectively. Moses Maurihungirire Director, Resource Management of the Ministry of Fisheries and Marine Resources of Namibia chaired the meeting; he was assisted by Kumbi Nsingui Kilongo of the National Institute of Fisheries Research of Angola.
5. The Agenda for the meeting (Annex A) was adopted without any changes.

## **REPORT ON PROJECT ACTIVITIES (SINCE PROJECT INCEPTION)**

6. The Project Coordinator gave a brief overview of the activities that have been undertaken under each output of the project since the inception of the project in December 2006.
7. The Coordinator started by reminding the members that EAF is one of emerging approaches to manage natural resources in a holistic way and that a number of international and regional fisheries-related instruments have established provisions that embrace the principles of ecosystem approach to fisheries. He gave the FAO Code of Conduct for Responsible Fisheries, 1995, UNCED and its Agenda 21, 1992 and the UN Convention on the Law of the Sea (LOSC) as examples of such instruments. He said that the LOSC obliges coastal States to take into consideration the interdependence of fish stocks, as well as the effects of their fishing activities on species associated with or dependent on harvested species. He said that EAF was more explicitly addressed in the Reykjavik Declaration adopted at the Reykjavik Conference on Responsible Fisheries in the Marine Ecosystem in October 2001 and reminded members about the WSSD implementation plan that calls for an ecosystem approach to be implemented by 2010 and the FAO COFI (Committee on Fisheries) endorsement (in 2003) of EAF as the appropriate framework for fisheries management

8. He then went over the basic principles of the ecosystem approach to fisheries as including
  - Maintaining ecosystem integrity;
  - Improving human well-being and equity;
  - Applying the precautionary approach and developing adaptive management systems;
  - Ensuring compatibility of management measures (across jurisdictions);
  - Broadening stakeholder participation and promoting sectoral integration;
  - Improving research to better understand ecosystems and to recognise that conservation and management decisions should be based on the best available knowledge.

9. He then recalled the immediate and long-term objectives of the project and briefly explained the components and outputs as shown in the below.

Component 1: EAF Policy and Management

- Policies formulated consistent with EAF principles at national and regional levels.
- Revised management plans that include EAF considerations developed

Component 2: Ecosystem Assessment & Monitoring

- Procedures and methods for assessment and monitoring of key ecosystem properties established, including the development of standardized data collections, sampling methods and appropriate set of scientific indicators

Component 3: Capacity Building

- Increased capacity at scientific and management level in partner countries on EAF approaches

Component 4: Support to Regional Research Vessels

- Advice on use of national or regional vessels for EAF related research including coordinated regional coverage by local or other vessels

Component 5: Planning & Dissemination

- Project planning and dissemination of information

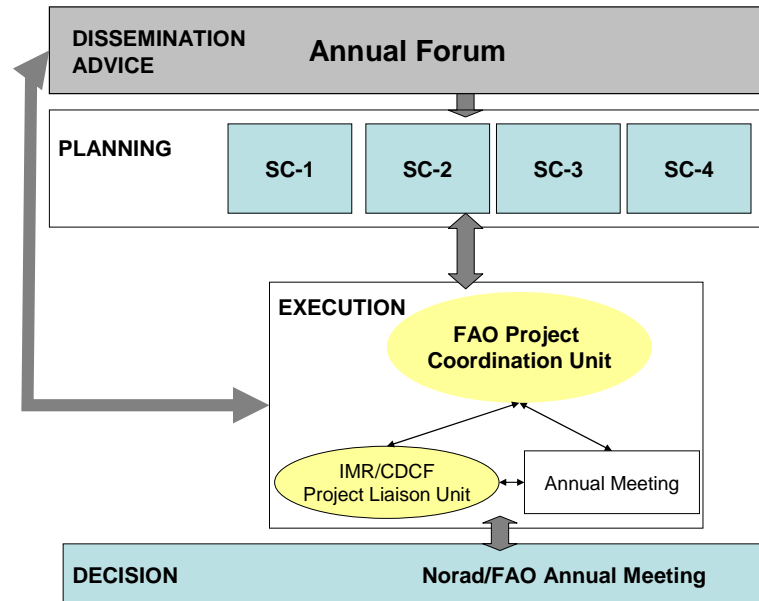
10. Under outputs 1 and 2, he noted the familiarization and ecological risk assessment methodology workshops that have been organised Accra, Ghana (September 2007), Durban, South Africa (June 2008), Casablanca, Morocco (June 2008), Freetown, Sierra Leone (September 2008) and Mombasa (January 2009). He said that the objectives of the workshops were: to (a) introduce participants to concepts and principles relevant to the implementation of an ecosystem approach to fisheries management and (b) to present to the partners the EAF-Nansen project, its scope and objectives and to identify overall activities to be carried out with the view to facilitating key processes and activities for the implementation of the ecosystem approach to fisheries in the region. It was noted that participants of the workshops have been introduced to the ecological risk assessment methodology which includes issue identification and prioritization - the necessary inputs for the preparation of fisheries management plans - and also the concept and preparation of the EAF-Baseline reports.
11. It was noted that a desk study on available instruments relevant to EAF in Africa including case studies is being undertaken in collaboration with the Development Law Service (LEGN) of FAO. The objective of the study is to guide the development or amendment of country legislation relating to EAF and enable the EAF-Nansen project to assist countries to incorporate the EAF concept in relevant national legislations.



12. Under output 3, it was noted that 17 surveys with a total of 555 survey days were carried out in 2007 and 2008 in collaboration with the BENEFIT programme and the GEF-assisted LME projects and 300 survey days are planned for 2009. It was mentioned that some of the surveys, e.g. in Angola, were a continuation of work under bilateral assistance from Norad.
13. The Coordinator noted that over 250 national scientists had participated in the surveys and that the results of the surveys have been documented in the cruise reports produced by the IMR Cruise Leaders assisted by the local scientists who participated in the surveys. Post-survey meetings have been organised at which results of the surveys were presented to national authorities (managers, scientists and politicians). In addition, a survey data analysis workshop was held in Accra, Ghana in December 2008 and a similar one is scheduled for 3-12 November 2009 for countries in the SWIOFC region.
14. An Expert Meeting for the development of GIS activities in the EAF-Nansen project was held in Rome, from 30 September to 2 October 2008 in order to assess the potential of GIS as a key tool for facilitating implementation of the EAF.
15. Under outputs 4 and 5, the Coordinator noted that the project has supported a number of stock assessment workshops and Working Group meetings mainly in the CECAF (Committee for the Eastern Central Atlantic Fisheries) area and similar support has been planned for the SWIOFC (South West Indian Ocean Fisheries Commission) area.
16. On the capacity building component of the project (output 6) it was mentioned that a Trainers' workshop was held in February 2009 in Rome and that the project is exploring possible formal training options with universities in Africa.
17. On project planning, dissemination and communication (output 6) mention was made of the Annual Tripartite (FAO, Norad, IMR) meetings and also the Annual Forum. The Annual Forum is for progress reporting, dissemination of experiences, identification of best practices and discussion of strategies. The first forum was held in Rome on 16<sup>th</sup> December 2008. It was reported that a Communication Strategy for the project has been prepared, a project website ([www.eaf-nansen.org](http://www.eaf-nansen.org)) is up and running and a project newsletter is under preparation.
18. The Coordinator informed the members that earlier in the year the project asked all National Task Groups (NTG) to prepare a concept note that will define the nature of national engagement under the project. He said that the first step in applying the ecosystem approach to fisheries (EAF) is to ensure that the country is adequately prepared to undertake this process and is realistic about what it can deliver and when. It is therefore essential to define the scope of work, the activities to be carried out, and the type of issues to deal with and also to identify the types of agencies or groups to be involved in the process. The concept note is meant to capture these ideas.
19. He said that some countries in the region have not sent their concept note neither have they responded to the reminders sent on these. He also noted that based on comments sent by the project coordination unit on the concept notes, each NTG has been asked to further develop the concept note into a small project that can be supported by the EAF-Nansen project. The project is providing an amount of US\$5 000 to each NTG to facilitate this work. In the BCC region, the project has decided to work directly with the Secretariat of the BCC and its Ecosystem Advisory Committee and to channel funds meant for the functioning of the NTGs in the three countries through a partnership with the BCC

## PROJECT MANAGEMENT STRUCTURE AND ROLES

20. The Project Coordinator introduced this agenda item. He said that under institutional arrangement for the project, the project management structure is shown in the figure below with provision for a regional steering committee (RSC) for each of the four operational areas of the project namely; the Canary Current LME area, the Guinea Current LME area, the Benguela Current LME area and the Agulhas and Somali Currents LME area (referred to in this report as the South West Indian Ocean area).



21. He said that each RSC is to have representatives of fisheries research and management institutions in the partner countries in the region, as well as IMR (Institute of Marine Research in Norway), FAO and representatives of the LME Programmes and other partner programmes/ projects operating in the area.
22. The RSC is responsible for assessing the project progress and formulating recommendations to the project management regarding requirements, priorities and work-plans for project implementation in the respective region. The Coordinator noted that the regional steering committees are now being operationalised.
23. An Advisory Group has been put together to play the role of a global “Steering Committee” to assess the project progress across regions, and to advise the project management to ensure effective implementation of the project.
24. An EAF Regional Task Group (RTG) has been established in each of the four operational regions of the project. Each RTG is composed of 1 member (and an alternate) from each country and representatives from relevant regional projects and Sub-regional Fisheries Commissions/Committees where applicable. The RTG is a forum for learning and exchange of ideas and advice in relation to EAF in a given region.
25. The project is facilitating the establishment of an EAF National Task Group in each participating country. The NTG is to assist in implementation of the project and not be totally responsible for it since EAF is a fisheries management issue that the Fisheries

Department is responsible for. The Coordinator took members through the terms of reference of the regional and national task groups.

26. The Coordinator mentioned that the work done on RTGs and NTGs have so far not included countries in the BCC area (except South Africa's involvement in the ASCLME area) because of non-response from these countries, especially Namibia and Angola.

#### **DR FRIDTJOF NANSEN SURVEYS**

27. Introducing this agenda item, Tore Stromme, Research Coordinator of the EAF-Nansen project traced the history of the Nansen programme and recalled the surveys conducted in the BCC area under BENEFIT, the BCLME project and now under the BCC and also under bilateral cooperation involving, for example, Norad and Angola.
28. Mr Stromme said that apart from normative work to maintain time series of fisheries information in the BCC area, the emphasis in recent Nansen surveys is on the establishment of baseline for climate change monitoring.
29. Mr Stromme informed the Committee that based on recent trends in demand 65 days have been set aside for BCC in 2010 and advised partners in the region to always submit their requests for vessel time early since Norad always wants to have the plan for the vessel in good time. The BCC secretariat indicated submitting their request for transboundary surveys in the following week.
30. The Regional Steering Committee members wanted some clarification on a few issues and also made some suggestions on the way forward with the Nansen surveys. The committee agreed that the BCC should coordinate the requests for vessel time and should set some criteria for what surveys can be asked for. It was noted though that BCC cannot justify national activities hence internal discussions should be done in-country before a request is sent and keeping BCC in the picture.
31. A member from South Africa requested that electronic copies of survey reports be sent to MCM (Marine and Coastal Management). It was also said that various working groups have requested that the survey reports should include the methods used. Mr Stromme agreed to send the electronic copies of reports that will be requested. He also noted that each survey report has a section on materials and methods.

#### **WORK PLAN FOR 2009/10**

32. Introducing the agenda item, Kyriakos Kourkouliotis, Operations Officer of the EAF-Nansen project recalled the duration of the project, the total budget, contributions by Norad and the partners (FAO and LME projects) and the funding gap that exists in the project. He reminded the RSC members that the total budget covers vessel operations and implementation of the ecosystem approach to fisheries at both national and regional levels. He said that the latter involves incorporating ecosystem consideration into management, policy formulation, capacity building, GIS, information dissemination, etc. He said that so far support to countries, have been in the areas of bringing scientists and managers to meetings and workshop and informed members that the next steps will be through the concept notes that NTGs are preparing and are expected to develop these into small projects that the EAF-Nansen project can fund.
33. Mr Kourkouliotis said that since funds for in-country activities are limited, there is no specific budgetary allocation to each country and that disbursement is demand driven.

He explained that the project has been designed with strong linkages to the existing relevant GEF projects and funding of activities is therefore considered incremental. He reiterated the decision to work with and through the BCC instead of working directly with the countries.

34. He explained the procedure to access funding from the project for the work of the NTGs. He also explained the nature and essence of the Letter of Agreement (LoA) required by FAO, the guidelines for the use of the funds and the technical and financial reporting expected from the countries. In the case of the BCC area, these arrangements will be made with the BCC.
35. Mr Kourkouliotis ended by saying that the work programme for the EAF-Nansen project the coming year is therefore a composite of the work programme of each NTG and the activities that will be undertaken at regional level by the project coordination unit. In the BCC area, this will involve the three projects that are being developed for joint implementation and an overarching MOU with the Commission will be the basis for the collaboration between the BCC and the EAF-Nansen project.
36. The Steering Committee was informed that following the BCC call for proposals, the EAF-Nansen project expressed interest in the following projects:
  - Provide Guidance on Institutional Arrangements Which Support an Ecosystem Approach to Fisheries Management (BCC Project Ref EAF/09/02);
  - Implementing a Process Which Allows the Review (Auditing) and Tracking of an Ecosystem Approach to Fisheries Management (BCC Project Ref: EAF/09/01);
  - Integrating the Human Dimension of an Ecosystem Approach to Fisheries into Fisheries Management in the BCC Region (BCC Project Ref EAF /09 / 12).
37. The purpose of the meeting held at the Protea Hotel in Windhoek on 28 and 29 September 2009 was to work on the three proposals. The Committee was informed that on the advice of the BCC Chief Technical Advisor WWF South Africa has been involved in the preparation of the project on EAF tracking tool and will be a major partner in its implementation. On the project on human dimension of EAF, the Committee was informed that FAO had coordinated informal discussions on the issue involving experts from all three countries under the Commission.
38. In the discussions that followed the presentation, FAO sought advice from the Committee on partnerships for the implementation of the project on human dimension of an ecosystem approach to fisheries. Unfortunately, the Committee decided that it was more appropriate that FAO would take this decision independently but was asked to consider the competencies of institutions in the region. Special mention was made of the MA-RE of the University of Cape Town.
39. It was noted that considering the proposed budgets of the projects and the provision made by the BCC ecosystem Advisory Committee, cost sharing or co-financing will be necessary for successful implementation of the projects.

## **MID-TERM REVIEW**

40. Introducing the agenda item, the Project Coordinator informed the meeting that an internal mid term review (MTR) of the EAF-Nansen project (GCP/INT/003/NOR) was carried out in June/July to provide an assessment of the implementation status of the project, to make recommendations for changes in overall design and orientation, to make recommendations for the work plan for the remainder of the project (2009 – 2011), and to provide elements in the process for discussing possible continuation of the project.
41. The meeting was informed that FAO found the mid-term review report well written and addressing the key issues of the project. It was noted that the project has raised significant high level awareness of EAF concepts in the target countries but there has been variable progress on integrating the EAF into fisheries management and environmental policy, marine, fisheries and environmental law. It was also noted that given vessel and human resources, the project has to elaborate detailed criteria for deciding the priorities for engagement, including country need and commitment, the social and economic importance of marine ecosystems and the threats to and fragility of the marine ecosystem.

## **TRAINING & FELLOWSHIPS**

42. The meeting was informed that the capacity building component of the project is still not fully developed but training and capacity building have been undertaken with activities in connection with the *R/V Dr Fridtjof Nansen* surveys and the workshops/meetings organised on ecological risk assessment and elaboration of fishery management plans. The Project Coordinator briefed the meeting on planned capacity building programmes including a formal course at the University of Ghana, Accra.
43. The Committee wanted to know how the project plans to allocate funds for training. It was explained that priority will be given to training that will contribute to the three projects to be executed in the region but other types of training in line with the general objectives of the project will also be accepted for funding.
44. The Coordinator informed members that the Advisory Group has asked the project to distinguish between short term and longer term courses and training programmes and that the EAF-Nansen project should not be expected to fill the vacuum for all kinds of fisheries training as is perhaps perceived by the participating countries.

## **ANY OTHER BUSINESS**

45. The issue of data sharing and use of the survey data was discussed. The BCC was advised to contact the ASCLME project on this subject and learn from their experience since the latter has developed very elaborate data sharing policy for all surveys done under the project.
46. The Steering Committee wanted to know how the project intends to tackle the big goals with the limited budget. FAO informed the Committee that one of the major recommendations of the mid-term review is for the project to elaborate detailed criteria for deciding the priorities for engagement, including country need and commitment, the social and economic importance of marine ecosystems and the threats to and fragility of

the marine ecosystem. The project was asked to focus on key areas, issues and in fewer countries.

## **DATE AND VENUE OF THE NEXT MEETING**

47. FAO suggested that the next meeting be tied to a BCC meeting hence the date and venue will be determined in consultation with the BCC Secretariat and communicated to members in due course.

## **CONCLUSIONS AND RECOMMENDATIONS**

48. FAO presented a set of recommendations compiled in the course of the meeting for consideration by the members. After discussions the following recommendations were arrived at.
49. The EAF Nansen project Regional Steering Committee (RSC) for the Benguela Current Commission (BCC) area:
- Proposed that requests for ship time received by the BCC from member countries be sent to the FAO EAF-Nansen Cruise Coordinator who works with the BCC Secretariat to prioritise these into the 65 days of RV Dr Fridtjof Nansen cruise time in the BCC region<sup>1</sup>. The prioritisation and allocation of ship time will take due consideration of the BCC mandate, and of the importance of surveying transboundary stocks and of maintaining time series, where these exist.
  - Noted and endorsed three projects that have been developed between BCC and EAF-Nansen on:
    - i. Implementing a process which allows the review (auditing) and tracking of an ecosystem approach (EAF/09/01)
    - ii. Provide guidance on institutional arrangements which support an ecosystem approach to fisheries. (EAF/09/02)
    - iii. A strategy to develop and integrate the human dimension of an EAF in the region (EAF/09/12)
  - The RSC suggested that FAO use its own technical criteria to select the appropriate partners to implement these projects.
  - Noted and generally agreed with the mid-term review findings and recommendations as presented to it in the working document and expressed its appreciation to the reviewers
  - Proposed that candidates for training and fellowships should come from BCC and as priority be related to the ship-based research and the 3 projects above. However this does not prevent other proposals from being considered.

---

<sup>1</sup> Note that countries may bilaterally negotiate RV Dr Fridtjof Nansen survey time but this would not be part funded by the BCC.

**APPENDIX A  
PROVISIONAL AGENDA**

8:30 – 9:00	Registration
9:00 -10:30	Introduction <ul style="list-style-type: none"> <li>• Opening and administrative arrangements             <ul style="list-style-type: none"> <li>○ Statement from BCC</li> </ul> </li> <li>• Election of Chair and Vice Chair</li> <li>• Agenda</li> <li>• Introduction to the EAF-Nansen project             <ul style="list-style-type: none"> <li>○ Update on activities</li> <li>○ Project management structure and roles</li> </ul> </li> </ul>
10:30-11:00	Coffee Break
11:00-13:00	<ul style="list-style-type: none"> <li>• Dr Fridtjof Nansen surveys             <ul style="list-style-type: none"> <li>○ Surveys in the BCC Region</li> <li>○ Survey plan for 2009/10</li> </ul> </li> <li>• Work Plan for 2009/10             <ul style="list-style-type: none"> <li>○ Finance and administration issues</li> <li>○ In-country activities (Project Concept Notes)/BCC-FAO EAF projects</li> </ul> </li> </ul>
13:00 – 14:00	Lunch
14:00 -16:00	<ul style="list-style-type: none"> <li>• Mid-Term Review</li> <li>• Training &amp; Fellowships</li> <li>• AOB</li> <li>• Conclusions and Recommendations</li> </ul>
16:00-16.30	Coffee Break
	<ul style="list-style-type: none"> <li>• THE END</li> </ul>

**APPENDIX B**  
**LIST OF PARTICIPANTS**

**Angola**

Kumbi Nsingui Kilongo  
National Institute of Fisheries Research  
Luanda  
Angola  
Tel: +244 923319481  
E-mail: kkilongo@hotmail.com /  
kkilongo@gmail.com

Miguel André António  
Ministry of Fisheries  
Luanda  
Angola  
Tel: 244 926270399  
Email: amiguelandre@yahoo.com.br

**Namibia**

Moses Maurihungirire  
Director, Resource Management  
Ministry of Fisheries and Marine Resources  
(MFMR)  
Windhoek  
Namibia  
Email: mmaurihungirire@mfmr.gov.na

J-P Roux  
Directorate of Resource Management  
Ecosystem Analysis Section  
Ministry of Fisheries and Marine Resources  
Luederitz Marine Research  
PO Box 394 Luederitz,  
Namibia  
Tel: + 264 (0) 63 202415  
Fax + 264 (0) 63 202495  
Email: jprouxnamibia@gmail.com

**South Africa**

Johann Augustyn  
Chief Director: Research, Antarctica and  
Islands  
Branch: Marine and Coastal Management  
Department of Environmental Affairs  
Private Bag X2, Rogge Bay 8012  
Cape Town, South Africa  
Tel: +27 21 4023102  
E-mail: augustyn@deat.gov.za

Tracey Fairweather  
Branch: Marine and Coastal Management  
Department of Environmental Affairs  
Private Bag X2, Rogge Bay 8012  
Cape Town, South Africa  
Tel: +27 21 4023256  
Email: tracey@deat.gov.za

**Benguela Current Commission**

Hashali Hamukuaya  
Chief Technical Advisor  
Benguela Current Commission  
Feld Street No. 47  
Windhoek, Namibia  
Tel: +264-61-246948  
Email: hashali@benguelacc.org

**Observers**

Barbara Paterson  
MA-RE  
University of Cape Town  
Walvis Bay  
Namibia  
Tel: +264 64206295  
+264 811490051  
Email: barbara@paterson.alt.na

Paul Kainge  
National Marine Information and Research  
Centre  
Ministry of Fisheries and Marine Resources  
P O Box 912  
Swakopmund  
Namibia  
Tel: + 264 (0) 64 4101132  
Email: pkainge@mfmr.gov.na



**FAO**

Pedro Barros  
Fisheries Management & Conservation Service  
(FIMF)  
Food & Agriculture Organization of the United  
Nations  
Viale delle Terme di Caracalla  
00153 Rome, Italy  
Tel (+39) 0657056469  
Fax (+39) 0657053020  
Email: Pedro.Barros@fao.org

Aubrey Harris  
Senior Fishery Officer  
Subregional Office for Southern Africa PO  
Box 3730, Harare, Zimbabwe  
Tel: (263) 4 253655, 253657  
Fax: (263) 4 700724  
Email: Aubrey.harris@fao.org

Kwame Koranteng  
Fisheries Management & Conservation Service  
(FIMF)  
Food & Agriculture Organization of the United  
Nations  
Viale delle Terme di Caracalla  
00153 Rome, Italy  
Tel (+39) 0657056007  
Fax (+39) 0657053020  
Email: Kwame.Koranteng@fao.org

Kyriakos Kourkouliotis  
Fisheries Management & Conservation Service  
(FIMF)  
Food & Agriculture Organization of the United  
Nations  
Viale delle Terme di Caracalla  
00153 Rome, Italy  
Tel (+39) 0657053715  
Fax (+39) 0657053020  
Email: Kyriakos.Kourkouliotis@fao.org

Tore Stromme  
Fisheries Management & Conservation Service  
(FIMF)  
Food & Agriculture Organization of the United  
Nations  
Viale delle Terme di Caracalla  
00153 Rome, Italy  
Tel (+39) 0657054735  
Fax (+39) 0657053020  
Email: Tore.Stromme@fao.org  
tore.stroemme@imr.no



