

monitoring numbers and trends for a healthy conservancy...

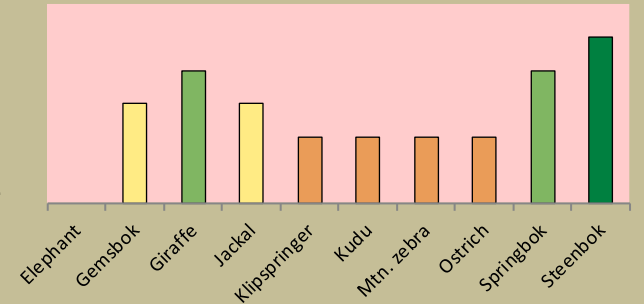
Current wildlife numbers and status

| Species | Animals Seen 2019 | Estimated population range | Wildlife Status | | |
|--------------|-------------------|----------------------------|-----------------|--------------------|----------------|
| | | | Count Trend | National Guideline | Desired Status |
| Elephant | | | dark orange | light green | |
| Gemsbok | 1 | 6 | orange | yellow | |
| Giraffe | 6 | 12 | light green | light green | |
| Jackal | 1 | | yellow | yellow | |
| Klipspringer | | | dark orange | yellow | |
| Kudu | | | dark orange | yellow | |
| Mtn. zebra | | | dark orange | yellow | |
| Ostrich | | | dark orange | yellow | |
| Springbok | 326 | 1044 - 2890 | yellow | light green | |
| Steenbok | 4 | 25 | dark green | light green | |

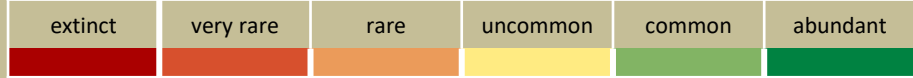
Desired Number – gives the species status in the conservancy based on what the conservancy would like to have.

dark green (abundant) – reduce a lot;
light green (common) – reduce a little;
yellow (uncommon) – keep numbers the same;
light orange (rare) – double numbers;
dark orange (very rare) – more than double numbers.

Wildlife status summary in 2019

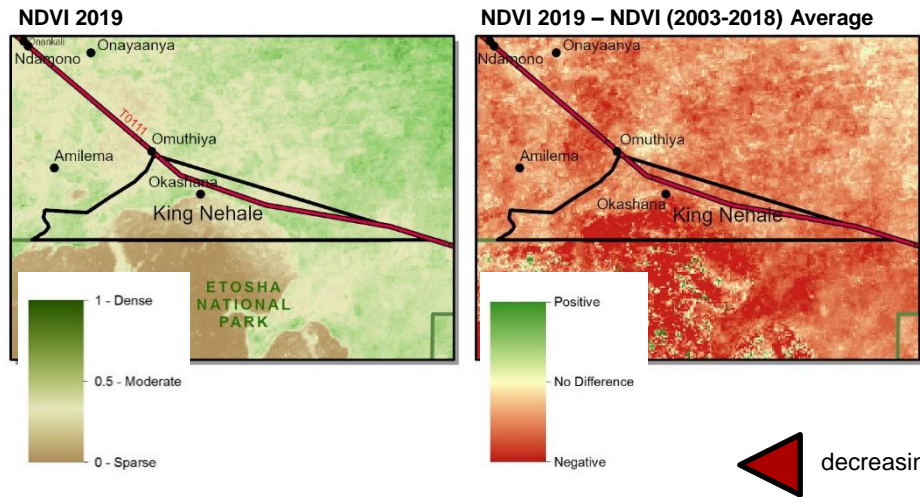


Key to wildlife status

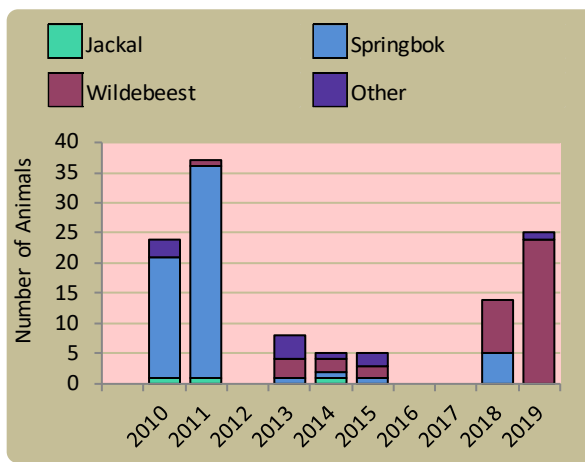


Vegetation monitoring

Green vegetation index (NDVI). Maps show vegetation cover during Feb-Apr of the current year and the difference between the current year and the long-term average (2003-2018)



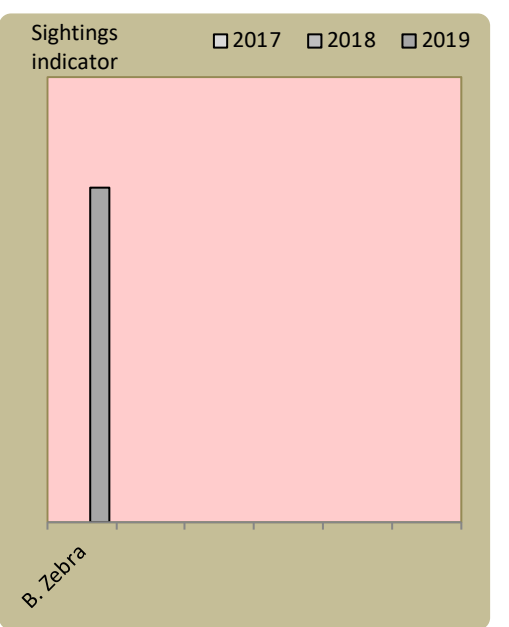
Wildlife mortalities



Flags



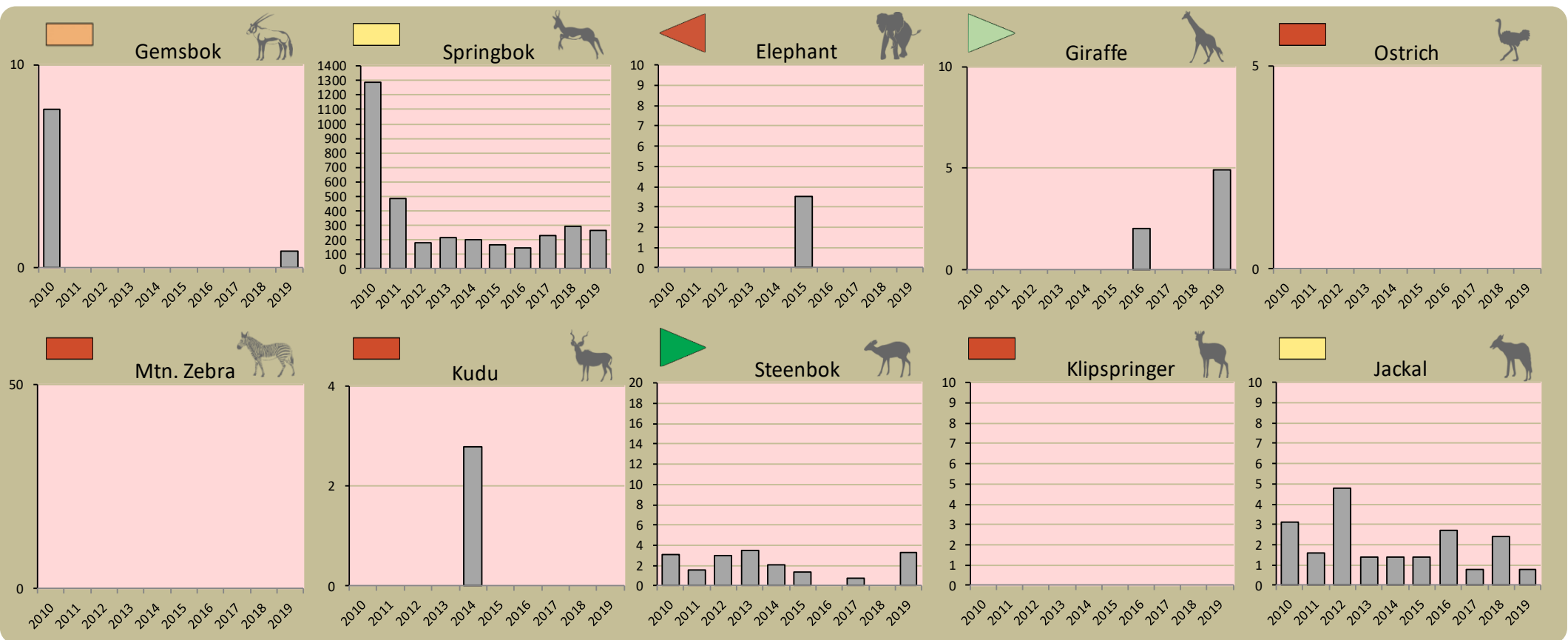
Locally rare species



Locally rare species are not found very often in the conservancy and need special conservation attention.

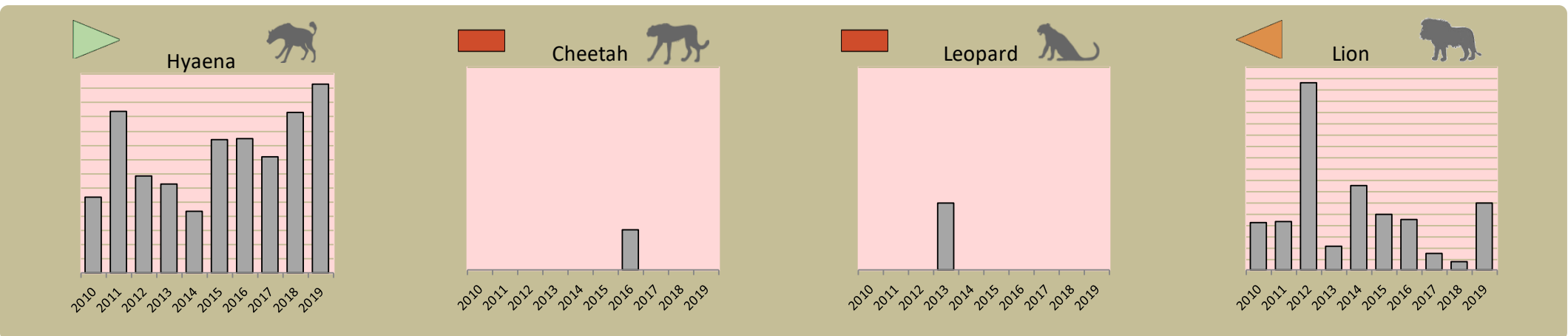
Annual game count

Charts show the number of animals seen each year per 100 km driven during the game count. As a point of reference the dashed horizontal line represents the combined 10 year average in Palmwag and Etendeka concessions. Status flags reflect the general count trend over the last 5 years.



Predator monitoring

charts show the average number of animals seen per Event Book each year status barometers reflect the general sightings trend over the last 5 years



Wildlife provides a wide range of benefits. Some wildlife can cause conflicts, but all wildlife is of value to tourism, trophy hunting and a healthy environment.

By using all the available information and adapting and improving activities, threats such as human wildlife conflict, poaching and other issues can be minimised.

Enabling wise conservancy governance...

Conservancy Statistics

| | |
|---------------------------|----------------|
| Date Registered: | September 2005 |
| Population (2011 census): | 4500 |
| Size (square kilometres): | 508 |
| Registered members: | 903 |

Key Compliance Requirements

| | |
|--|-----|
| Was an AGM held? | ✓ |
| Were elections held? | N/A |
| Were benefits distributed according to the BDP? | ✓ |
| Is game managed according to the GMUP? | ✓ |
| Was the financial report presented and approved? | ✗ |

Conservancy Governance

| | Male | Female | Total |
|--|------------|--------|-------|
| Number of management committee members | 7 | 13 | 20 |
| Attendance at AGM | 110 | 94 | 204 |
| Date of the last AGM: | 30/11/2019 | | |
| Date of the next AGM: | 28/11/2020 | | |
| Other important issues | | | |
| Budget approved? | ✓ | | |
| Work plan approved? | ✓ | | |
| Annual conservancy report approved? | | | |

Benefit Distribution

| Type | Description | Beneficiary Number |
|-------------------|--|--------------------|
| Social Benefits | Cement Bags For Onakasino Primary School | Schools 1 |
| | Chairs, Cement, Poles, Etc. - Okakondo Centre | |
| | Corrugated Iron For Onaluthiua Clinic | Clinic 1 |
| | Diesel For Members At Chamcham | |
| Meat Distribution | Youth That Were Trained As Tour Guides through Gondwana Collection | |
| | Meat For Traditional Festival | |
| | Meat To Members | |
| Other Benefits | Meat To Omuthiya lipundi School | |
| | Hwc Offsets | |
| | Traditional Authority Activities | |

Employment

| | Male | Female | Total |
|---------------------------------------|------|--------|-------|
| Conservancy staff (Incl. CGG & CRM) | 2 | 2 | 4 |
| Number of Community Game Guards | 1 | 1 | 2 |
| Number of Community Resource Monitors | | | |

Governance Performance Rating How well did the conservancy perform in the past year?

| Performance Category | This Year | Prev. Year | Explanation of performance category |
|--------------------------|-----------|------------|---|
| 1 Member engagement | moderate | | The conservancy is adequately engaging its members |
| 2a Benefit planning | strong | | The conservancy developed its BDP in a transparent and participatory manner |
| 2b Benefit distribution | weak | | The conservancy distributes benefits to its members in a fair, transparent and equitable manner |
| 3 Accountability | moderate | | Conservancy members are holding the management committee accountable |
| 4 Compliance | strong | | The conservancy is compliant with the standard operating procedures (SOPs) |
| 5 Stakeholder engagement | strong | | The conservancy maintains relationships with key external stakeholders |
| 6 Financial management | weak | | The conservancy is effectively managing its finances |

Colour codes:

none

weak

moderate

strong

exceptional

N/A