



monitoring numbers and trends for a healthy conservancy...

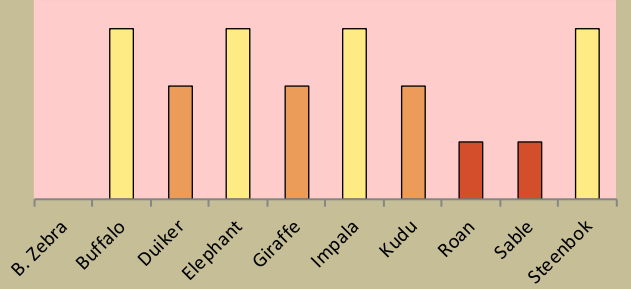
Current wildlife numbers and status

Species	Animals Seen	Estimate	Wildlife Status		
			Count Trend	Landscape Status	Desired Number
B. Zebra				Abundant	
Buffalo				Common	
Duiker				Rare	
Elephant				Uncommon	
Giraffe				Rare	
Impala				Uncommon	
Kudu				Rare	
Roan				Very Rare	
Sable				Very Rare	
Steenbok				Uncommon	

**Desired Number** – gives the species status in the conservancy based on what the conservancy would like to have.

**dark green** (abundant) – reduce a lot;  
**light green** (common) – reduce a little;  
**yellow** (uncommon) – keep numbers the same;  
**light orange** (rare) – double numbers;  
**dark orange** (very rare) – more than double numbers.

Wildlife status summary in 2019



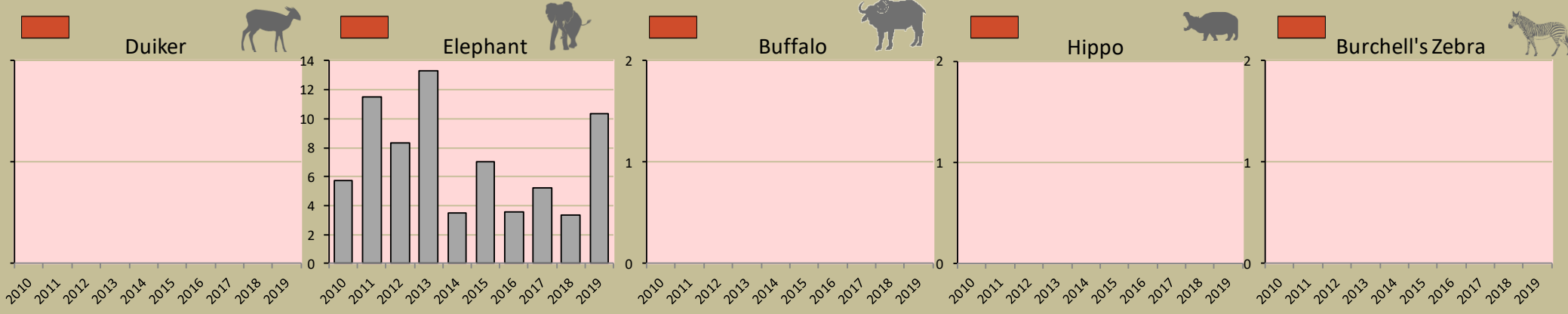
Key to wildlife status



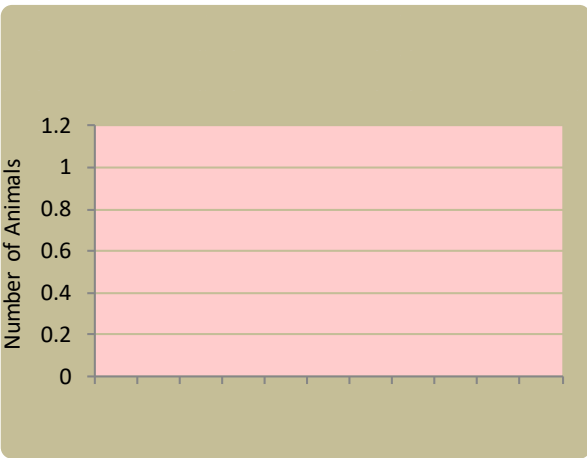
Fixed route patrols

charts show the number of sightings of each species per fixed route foot patrol each year. Status flags reflect the general sightings trend over the last 5 years

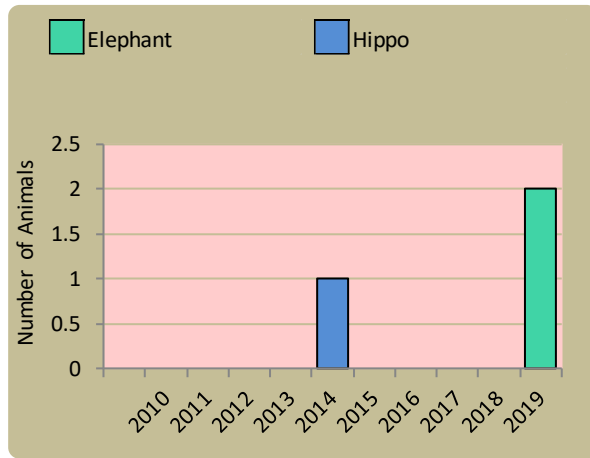
Flags



Wildlife introductions

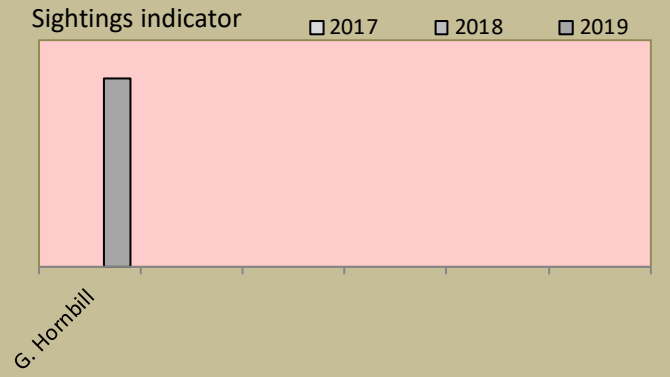


Wildlife mortalities

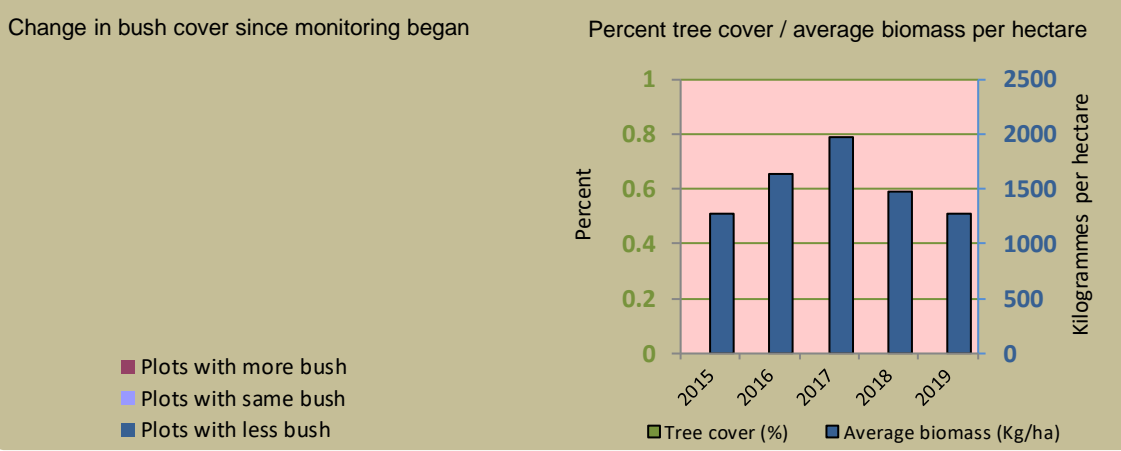


Locally rare species

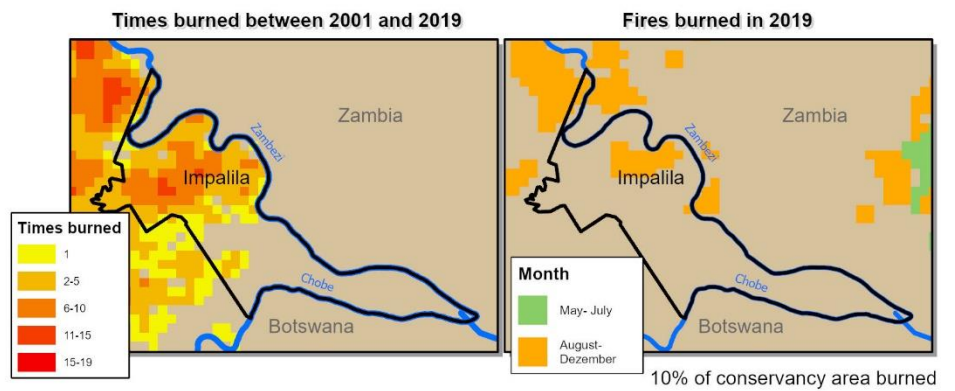
Locally rare and endangered species are not found very often in the conservancy and need special conservation attention.



Vegetation monitoring

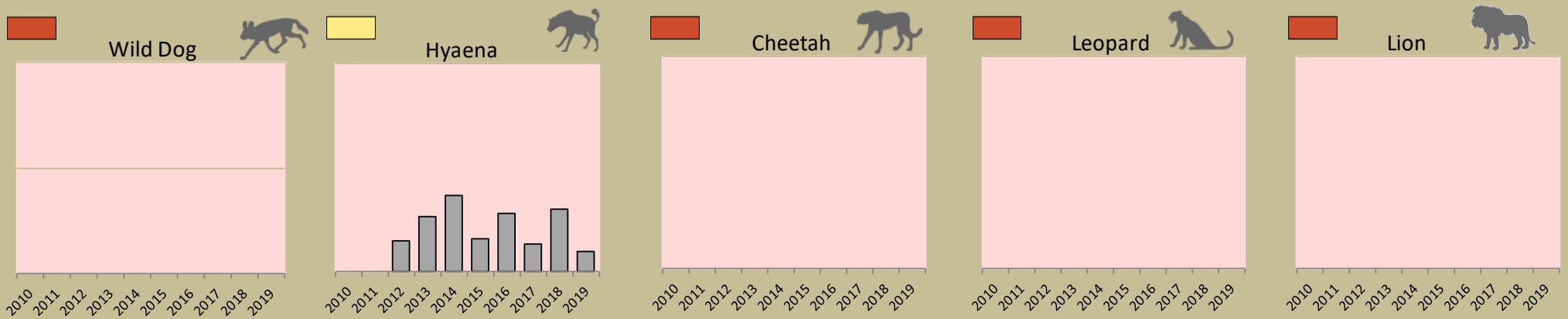


Fire monitoring



Predator monitoring

charts show the average number of animals seen per Event Book each year. Status flags reflect the general sightings trend over the last 5 years



Wildlife provides a wide range of benefits. Some wildlife can cause conflicts, but all wildlife is of value to tourism, trophy hunting and a healthy environment.

By using all the available information and adapting and improving activities, threats such as human wildlife conflict, poaching and other issues can be minimised.

### Enabling wise conservancy governance...

#### Conservancy Statistics

Date Registered:	December 2005
Population (2011 census):	880
Size (square kilometres):	73
Registered members:	343

#### Key Compliance Requirements

Was an AGM held?	✓
Were elections held?	✓
Were benefits distributed according to the BDP?	✓
Is game managed according to the GMUP?	✓
Was the financial report presented and approved?	✓

#### Conservancy Governance

	Male	Female	Total
Number of management committee members	5	6	11
Attendance at AGM	39	58	97
Date of the last AGM:	29/11/2019		
Date of the next AGM:	11/2020		
Other important issues			
Budget approved?	✗		
Work plan approved?	✓		
Annual conservancy report approved?			

#### Benefit Distribution

Type	Description	Beneficiary	Number
Community Devp.	Water Installation In Villages	People	162
Social Benefits	Churches		
	Farmer's Association		
	Funeral Cover	Households	4
	Scholarships	Students	2
	Spelu Group	People	16
	Sports	People	138
Meat Distribution	Meat To Members	People	343
Other Benefits	Chief Allowance	People	1
	Hwc Offset	People	41
	Independence Celebrations		
	Sub Khuta	People	8
	Ta Bukalo		
	Village Donations	Villages	9

#### Employment

	Male	Female	Total
Conservancy staff (Incl. CGG & CRM)	7	8	15
Number of Community Game Guards	3	3	6
Number of Community Resource Monitors			

#### Governance Performance Rating How well did the conservancy perform in the past year?

Performance Category	This Year	Prev. Year	Explanation of performance category
1 Member engagement	Strong		The conservancy is adequately engaging its members
2a Benefit planning	Strong		The conservancy developed its BDP in a transparent and participatory manner
2b Benefit distribution	Strong		The conservancy distributes benefits to its members in a fair, transparent and equitable manner
3 Accountability	Strong		Conservancy members are holding the management committee accountable
4 Compliance	Strong		The conservancy is compliant with the standard operating procedures (SOPs)
5 Stakeholder engagement	Strong		The conservancy maintains relationships with key external stakeholders
6 Financial management	Moderate		The conservancy is effectively managing its finances

Colour codes:

none

weak

moderate

strong

exceptional

N/A