

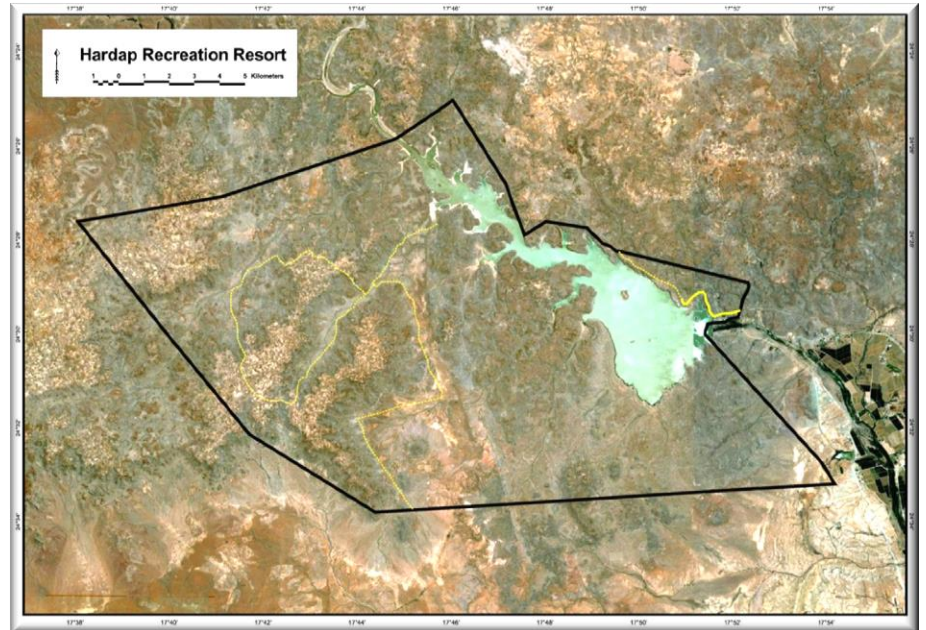
# GAME COUNTS IN HARDAP GAME PARK

May 2013

## Total Population Estimates

Species	Estimate	Lower 95 % CL	Upper 95% CL
Gemsbok	1674	1095	2560
Kudu	535	397	721
Mountain zebra	282	127	627
Ostrich	235	193	285
Springbok	2440	1381	4313

Estimates were calculated using DISTANCE analysis.



## Total numbers seen per year

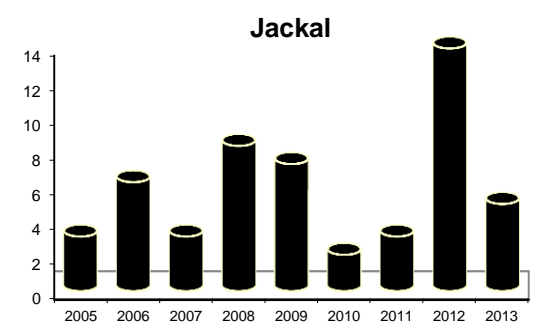
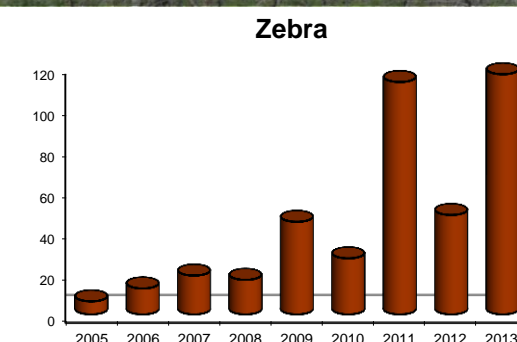
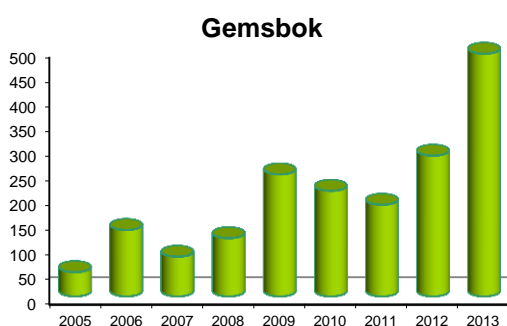
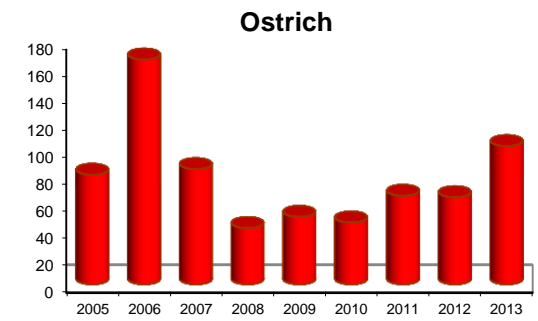
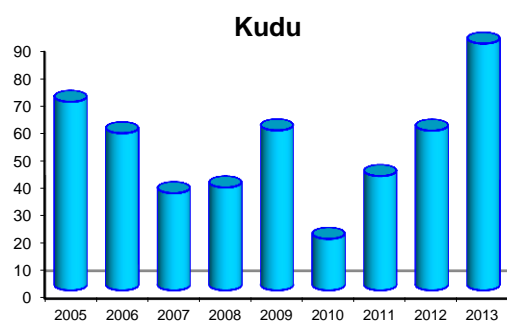
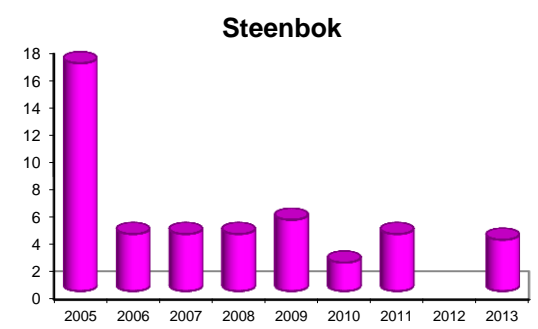
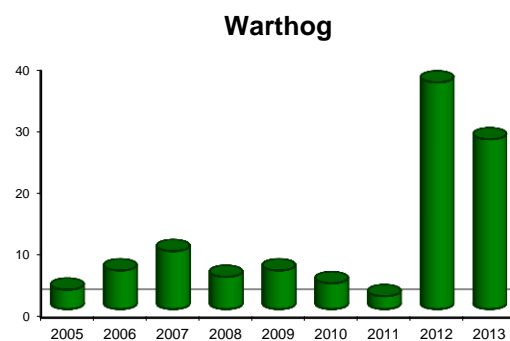
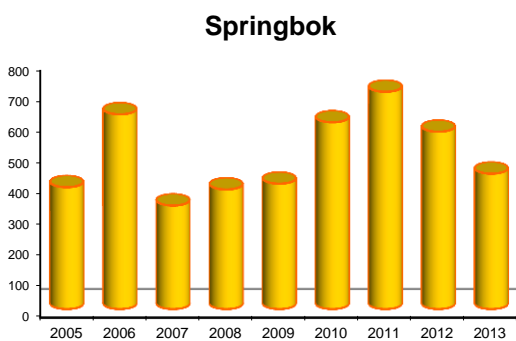
Species	2005	2006	2007	2008	2009	2010	2011	2012	2013
Baboon					16	17		7	17
Gemsbok	47	129	77	113	237	205	178	225	393
Jackal	3	6	3	8	7	2	3	11	4
Klipspringer		2							
Kudu	66	55	34	36	56	18	40	46	72
Mountain Zebra	6	12	18	16	43	26	108	38	93
Ostrich	78	160	82	40	48	44	63	51	82
Rhino	2	3			5	2	1		4
Springbok	379	606	322	372	390	581	676	454	351
Steenbok	16	4	4	4	5	2	4		3
Warthog	3	6	9	5	6	4	2	29	22

## Animals seen during this count:

Total Route km	80
Total area (km2)	238
Number of routes	2
% area excluded	0

Species	Total	Route 1	Route 2
Baboon	17	10	7
Gemsbok	393	179	214
Jackal	4	3	1
Klipspringer	0	0	0
Kudu	72	27	45
Mountain Zebra	93	33	60
Ostrich	82	27	55
Rhino	4	2	2
Springbok	351	150	201
Steenbok	3	2	1
Warthog	22	17	5

## Trends:



Y-axis = Number of animals per 100km